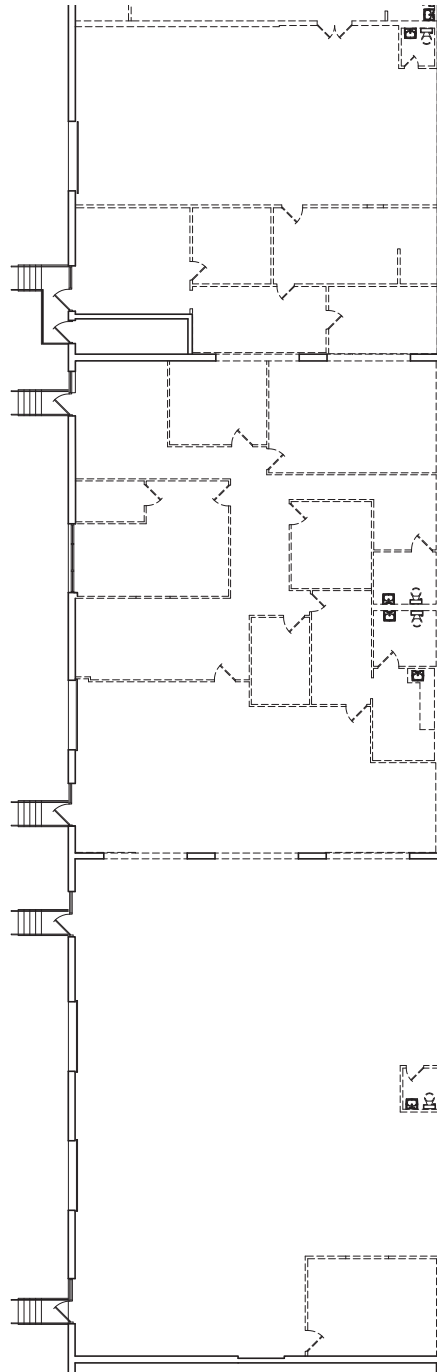


2,535 - 15,241 SF AVAILABLE FOR LEASE

# 16598 OAKMONT AVENUE

GAITHERSBURG, MARYLAND 20877

**APPROX. 15,241 SF  
OF CONTIGUOUS SPACE**



**SUITE 16730**  
2,535 SF approx.

**SUITE 16732 - 16734**  
3,800 SF approx.

**SUITE 16736 - 16738**  
3,890 SF approx.

**SUITE 16740 - 17642**  
5,016 SF approx.  
(Suite not shown)

## LEASING INFORMATION

**ETHAN BERNARDI**  
Senior Vice President  
301.896.9123  
Ethan.Bernardi@transwestern.com

**NATHAN BORTNICK**  
Vice President  
301.896.9136  
Nathan.Bortnick@transwestern.com