

## BUILDING FEATURES



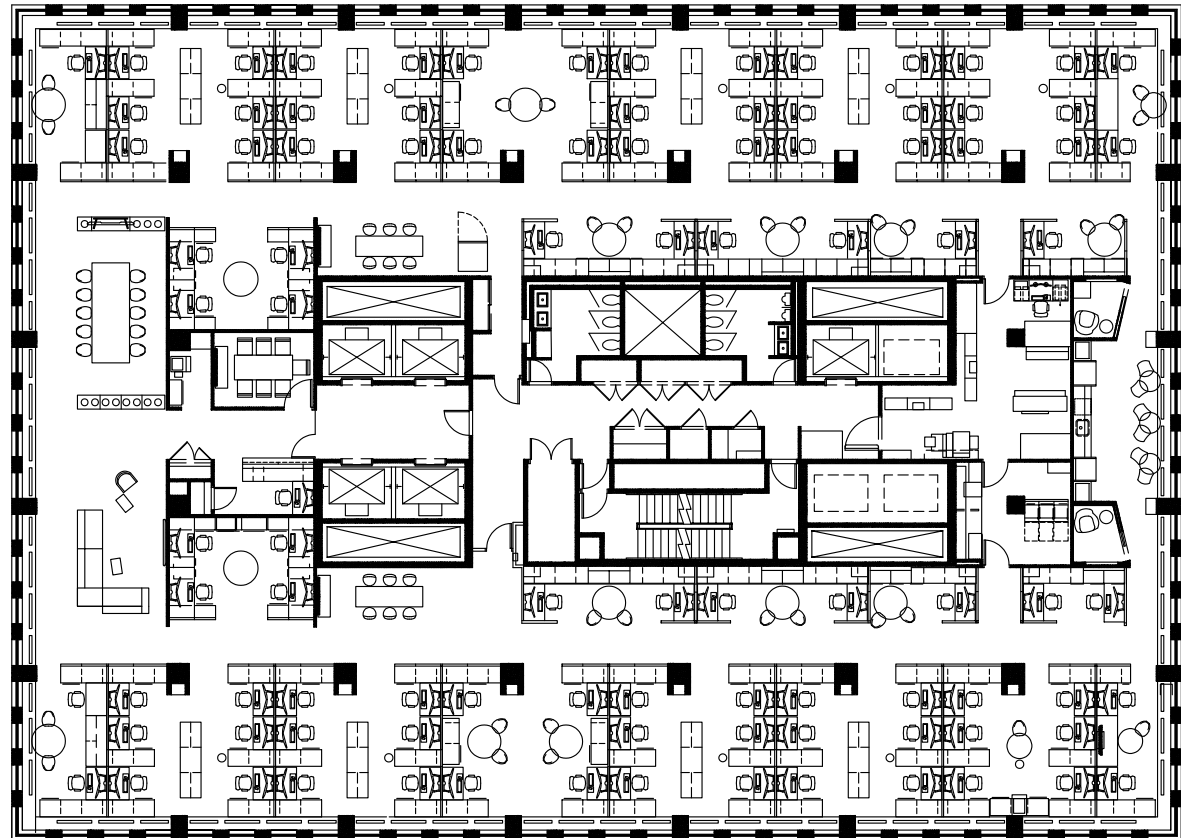
- Strategic Location
- World Class Address
- Fitness Center
- Tenant Lounge
- Conference Center
- Concierge Services
- Adjacent Parking
- 24-hour Security
- Bike Room

[Click here to take a tour with](#)  
**VTS | Marketplace**

## FOR INFORMATION, PLEASE CONTACT

Kathleen Bertrand  
312.881.7046

kathleen.bertrand@transwestern.com



## SUITE FEATURES

- Elevator identity
- 96 Workstations
- Flex meeting spaces
- 2 Phone rooms
- Reception
- Kitchen
- Storage/IT rooms

