



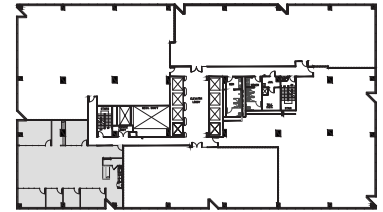
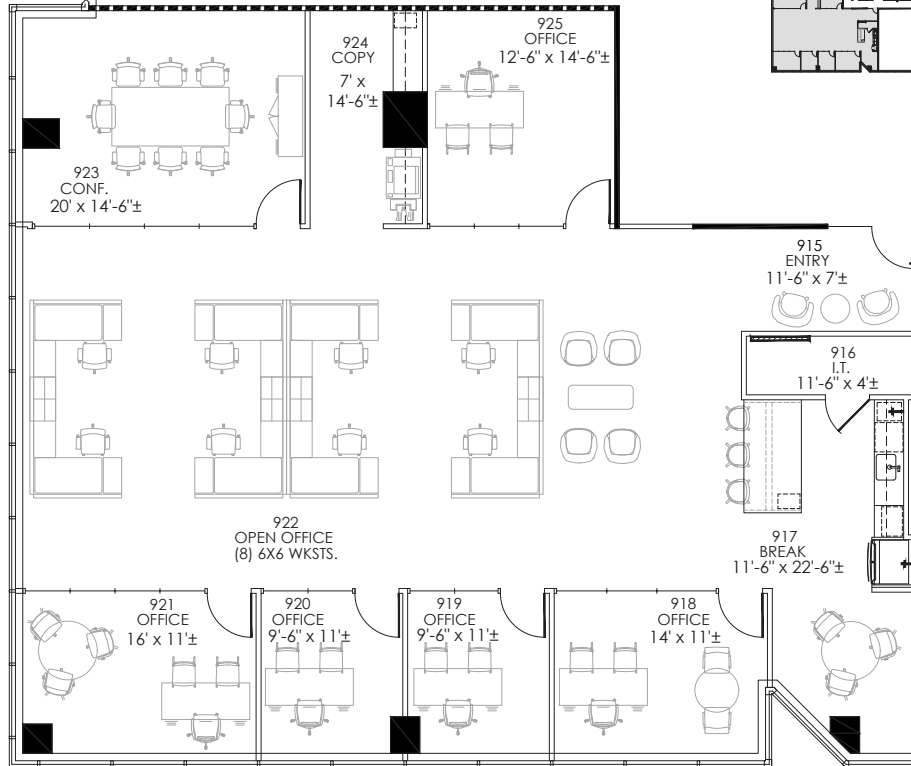
PACIFIC OAK

ONE TWENTY FIVE East John Carpenter

125 EAST JOHN CARPENTER FWY, IRVING, TX 75062

Suite 980

3,481 RSF



KEY PLAN



FOR LEASING INFORMATION:

Chris Lipscomb | 214.237.5022 | chris.lipscomb@transwestern.com

Laney Delin | 214.237.5020 | laney.delin@transwestern.com

 TRANSWESTERN

www.transwestern.com