

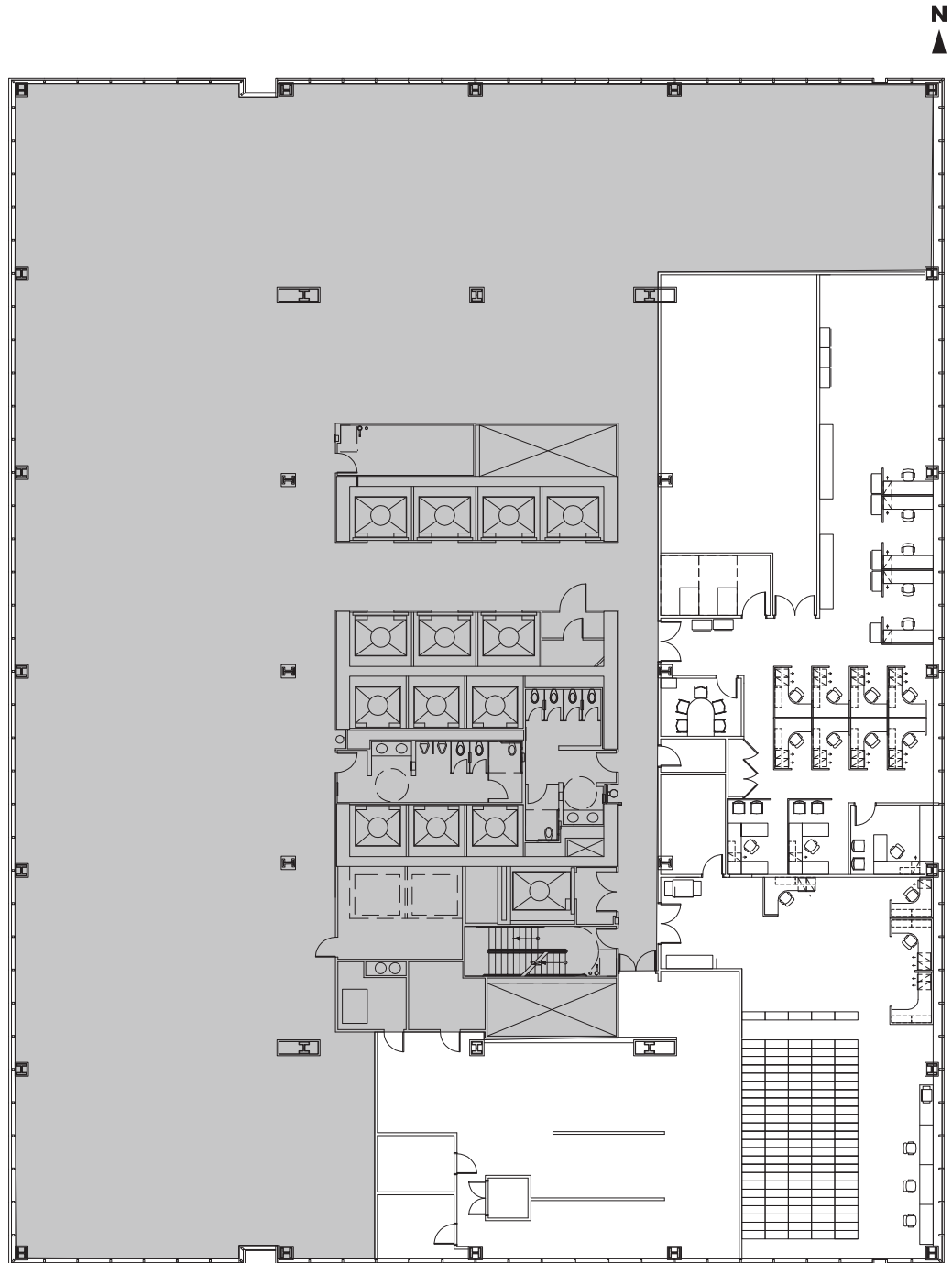


# STE 915

9,828 SF /// Existing Conditions

## Suite Notes

Existing conditions include commercial kitchen with electric appliances, extensive IT room with supplemental HVAC, private offices and workstations



**KATIE STEELE**

312.881.7062

**KATHLEEN BERTRAND**

312.881.7046

**MIKE WATTS**

312.881.7013