

CLASS A MEDICAL OFFICE SPACE FOR LEASE

WILLOWBROOK MEDICAL ARTS BUILDING

13215 DOTSON ROAD | HOUSTON, TEXAS 77070

CONTACT

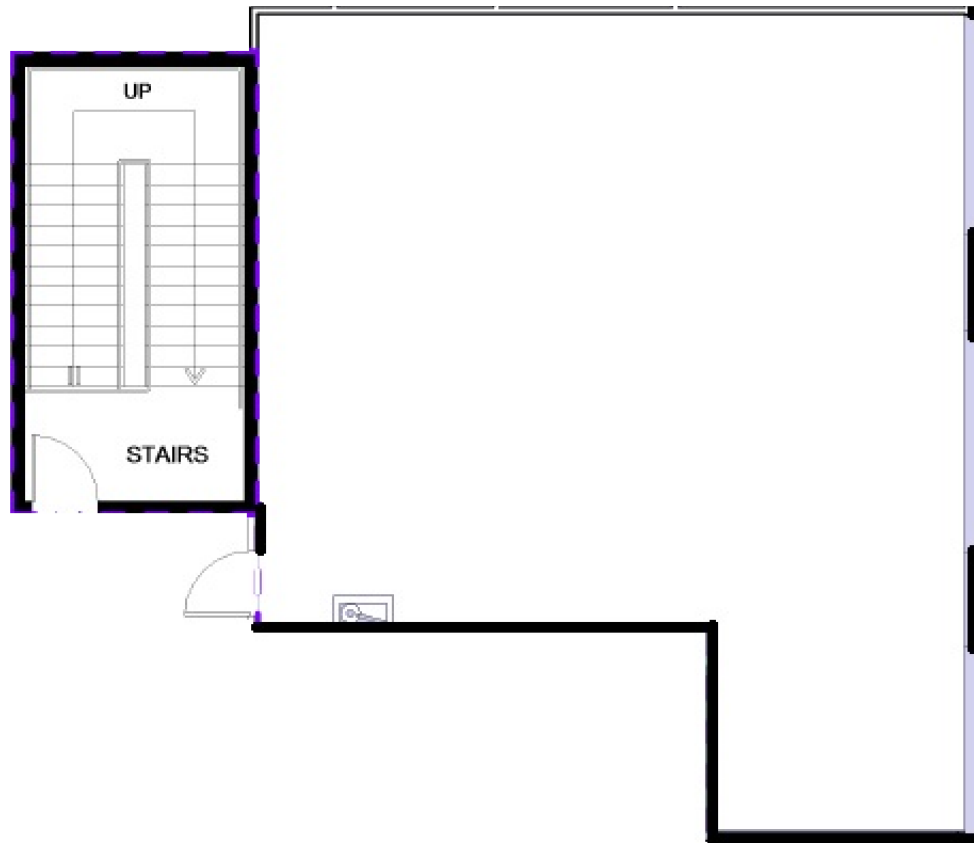
SARAH CARTER | VP

713.231.1629

sarah.carter@transwestern.com

FLOOR PLAN

SUITE 310: 1,122 SF



The information provided herein was obtained from sources believed reliable; however, Transwestern makes no guarantees, warranties or representations as to the completeness or accuracy thereof. The presentation of this property is submitted subject to errors, omissions, change of price or conditions, prior sale or lease, or withdrawal without notice. Copyright © 2019 Transwestern.