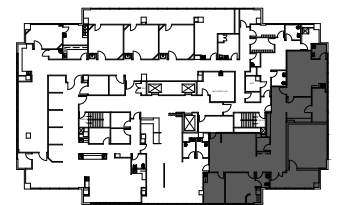
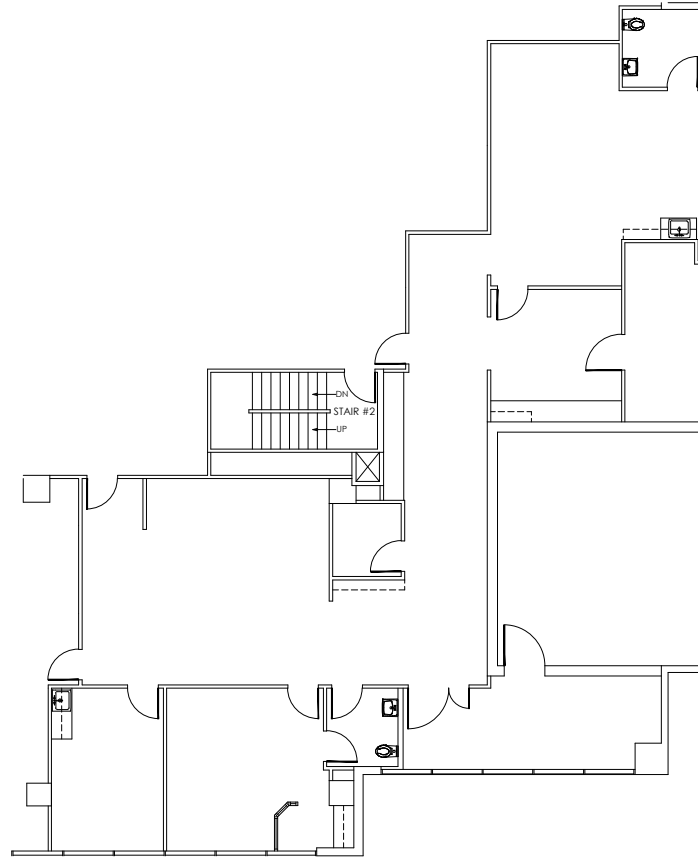


# GREENVILLE MEDICAL TOWER

7150 GREENVILLE AVENUE | DALLAS, TEXAS 75231

**SUITE 450**

**3,078 RSF**



**KEY PLAN**

## FOR MORE INFORMATION:

JOHN HUFF | 214.237.5010 | [john.huff@transwestern.com](mailto:john.huff@transwestern.com)  
CHRIS LIPSCOMB | 214.237.5022 | [chris.lipscomb@transwestern.com](mailto:chris.lipscomb@transwestern.com)

Owned By:

**Catalyst**  
healthcare real estate

Leased By:

**T TRANSWESTERN**