

SUGAR LAND MEDICAL PLAZA

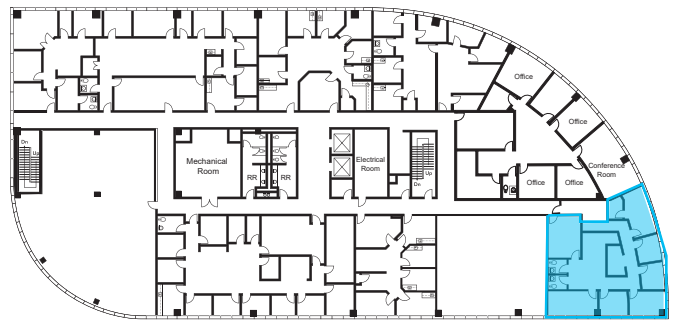
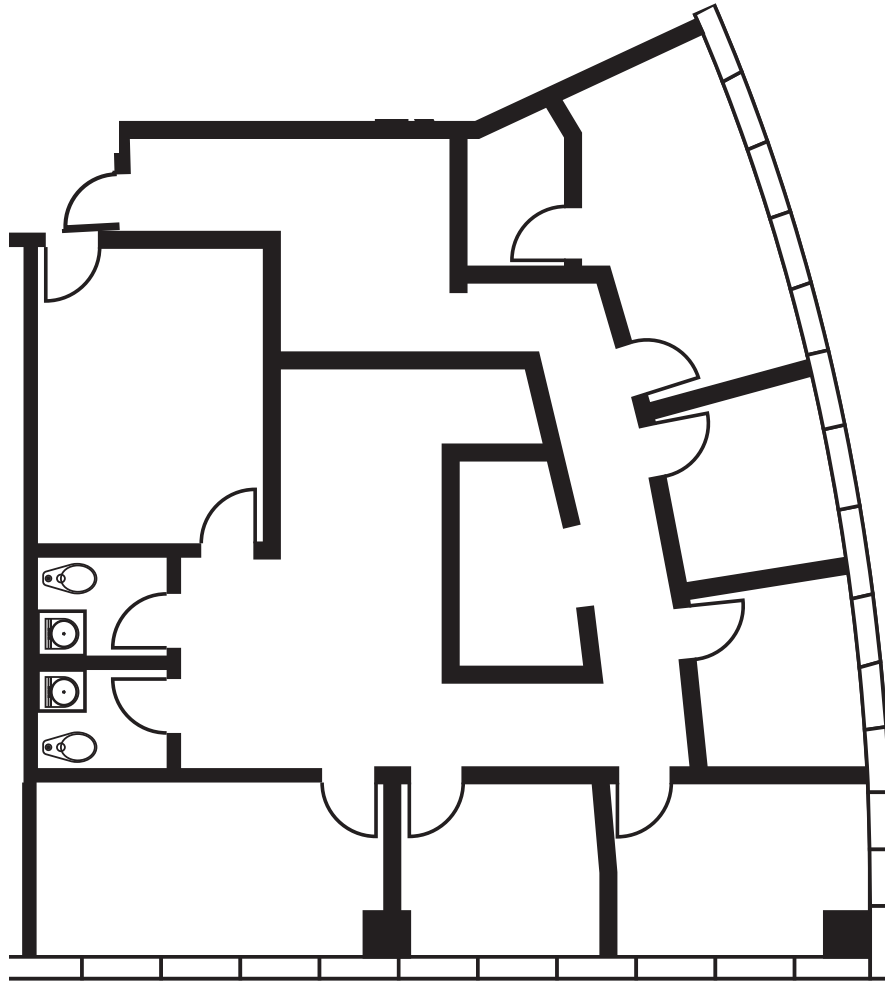
1327 Lake Pointe Parkway | Sugar Land, TX 77478



TRANSWESTERN

REAL ESTATE
SERVICES

Suite 315
2,287 SF



Leasing Information:

Justin Davis
713.270.3334
Justin.Davis@transwestern.com

Christian Connell
713.231.1588
Christian.Connell@transwestern.com

Justin Brasell
713.231.1595
Justin.Brasell@transwestern.com

The information provided herein was obtained from sources believed reliable; however, Transwestern makes no guarantees, warranties or representations as to the completeness of accuracy thereof. The presentation of this property is submitted subject to errors, omissions, change of price or conditions, prior to sale or lease, or withdrawal without notice. Copyright © 2023 Transwestern.