

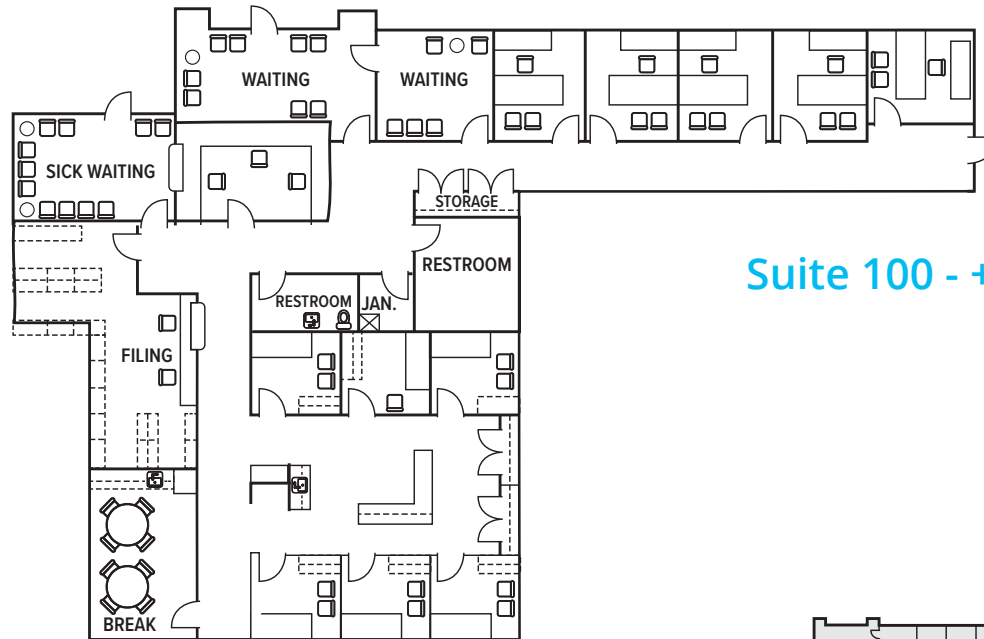
# ROCKWALL MEDICAL PLAZA

890 Rockwall Pky, Rockwall, TX | Medical/Office Space For Lease

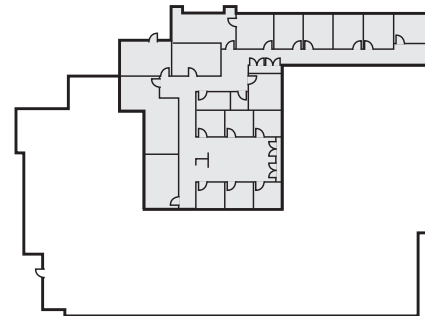


TRANSWESTERN

REAL ESTATE  
SERVICES



Suite 100 - +/- 4,300 SF



## Leasing Information:

**John Huff**  
National Managing Director  
214.237.5010  
[john.huff@transwestern.com](mailto:john.huff@transwestern.com)

**Brooke Sutherland**  
Associate  
214.292.6422  
[brooke.sutherland@transwestern.com](mailto:brooke.sutherland@transwestern.com)

The information provided herein was obtained from sources believed reliable; however, Transwestern makes no guarantees, warranties or representations as to the completeness of accuracy thereof. The presentation of this property is submitted subject to errors, omissions, change of price or conditions, prior to sale or lease, or withdrawal without notice. Copyright © 2020 Transwestern.