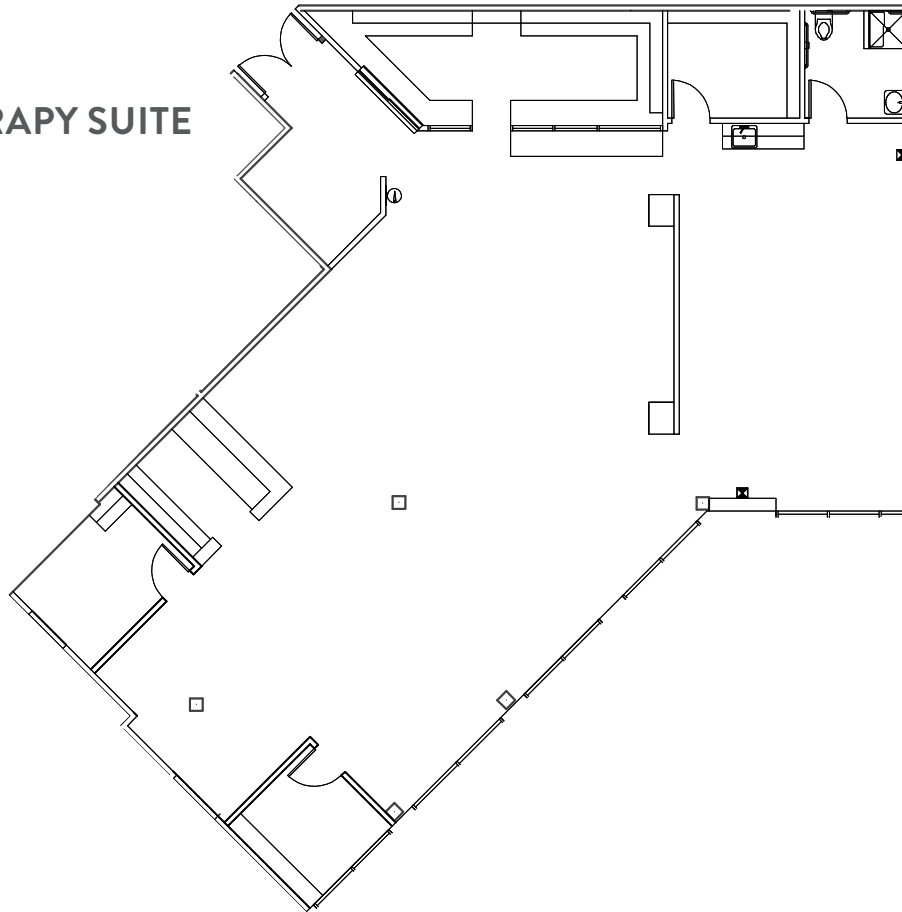


BILTMORE MEDICAL MALL

2222 E HIGHLAND AVE | PHOENIX, AZ

SUITE 200: ±3,399 SF
FORMER PHYSICAL THERAPY SUITE



LEASING INFORMATION:

Vince Femiano

Senior Vice President

602.954.7559

vince.femiano@transwestern.com

Kate Morris

Senior Vice President

602.296.6369

kate.morris@transwestern.com

Kevin Smigiel

Senior Associate

602.265.5502

kevin.smigiel@transwestern.com



TRANSWESTERN REAL ESTATE SERVICES

2501 East Camelback Road, Suite 1
Phoenix, Arizona 85016

T 602.956.5000 F 602.956.5333

transwestern.com

THE INFORMATION PROVIDED HEREIN WAS OBTAINED FROM SOURCES BELIEVED RELIABLE; HOWEVER, TRANSWESTERN MAKES NO GUARANTEES, WARRANTIES OR REPRESENTATIONS AS TO THE COMPLETENESS OF ACCURACY THEREOF.
THE PRESENTATION OF THIS PROPERTY IS SUBMITTED SUBJECT TO ERRORS, OMISSIONS, CHANGE OF PRICE OR CONDITIONS, PRIOR TO SALE OR LEASE, OR WITHDRAWAL WITHOUT NOTICE. COPYRIGHT © 2022 TRANSWESTERN.

BILTMORE MEDICAL MALL

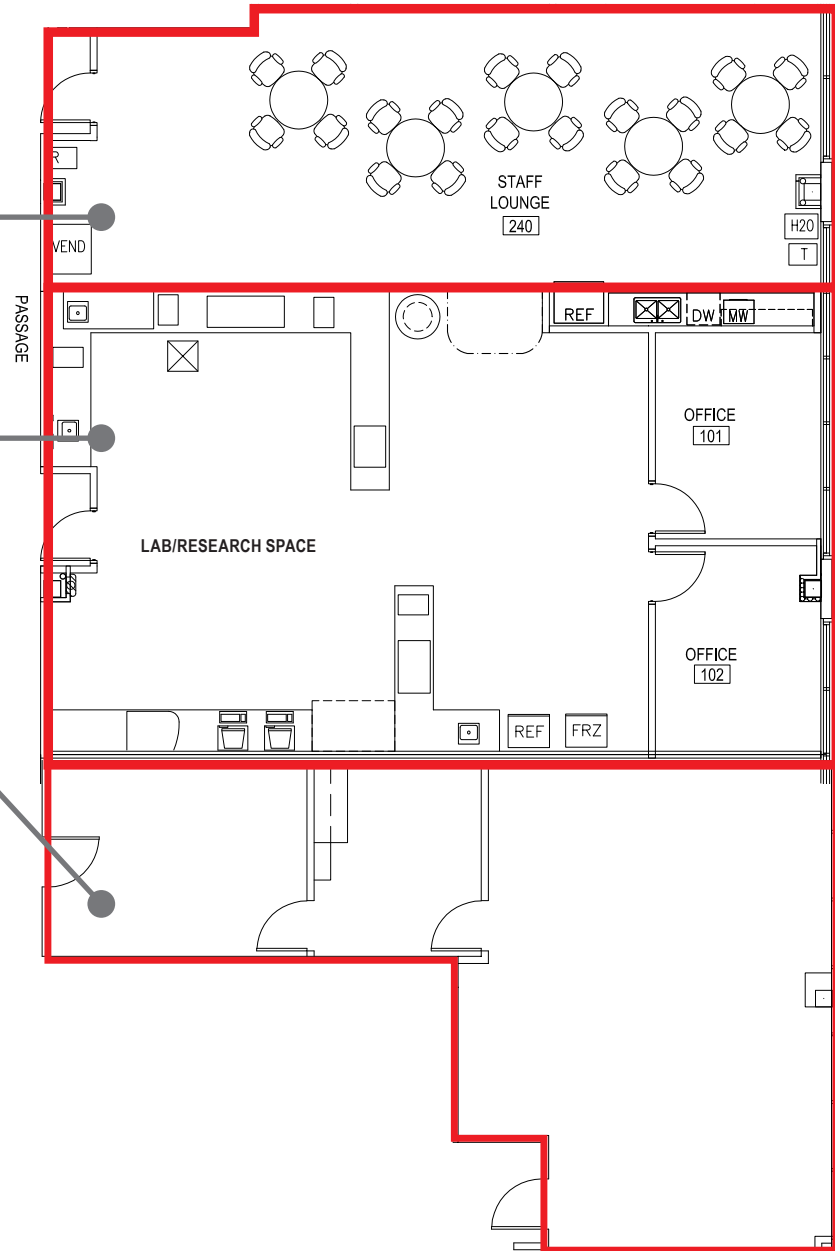
2222 E HIGHLAND AVE | PHOENIX, AZ

CONTIGUOUS UP TO $\pm 3,445$ SF

STAFF LOUNGE: ± 895 SF

SUITE 415: $\pm 1,509$ SF

SUITE 425A: $\pm 1,041$ SF



TRANSWESTERN REAL ESTATE SERVICES

2501 East Camelback Road, Suite 1
Phoenix, Arizona 85016
T 602.956.5000 F 602.956.5333
transwestern.com

LEASING INFORMATION:

Vince Femiano

Senior Vice President

602.954.7559

vince.femiano@transwestern.com

Kate Morris

Senior Vice President

602.296.6369

kate.morris@transwestern.com

Kevin Smigiel

Senior Associate

602.265.5502

kevin.smigiel@transwestern.com

THE INFORMATION PROVIDED HEREIN WAS OBTAINED FROM SOURCES BELIEVED RELIABLE; HOWEVER, TRANSWESTERN MAKES NO GUARANTEES, WARRANTIES OR REPRESENTATIONS AS TO THE COMPLETENESS OF ACCURACY THEREOF. THE PRESENTATION OF THIS PROPERTY IS SUBMITTED SUBJECT TO ERRORS, OMISSIONS, CHANGE OF PRICE OR CONDITIONS, PRIOR TO SALE OR LEASE, OR WITHDRAWAL WITHOUT NOTICE. COPYRIGHT © 2022 TRANSWESTERN.