

MEDICAL OFFICE SPACE FOR LEASE

PEARLAND CENTRAL MED PLAZA

8619 BROADWAY | PEARLAND, TEXAS 77584

CONTACT

SARAH CARTER | VP

713.231.1629

sarah.carter@transwestern.com

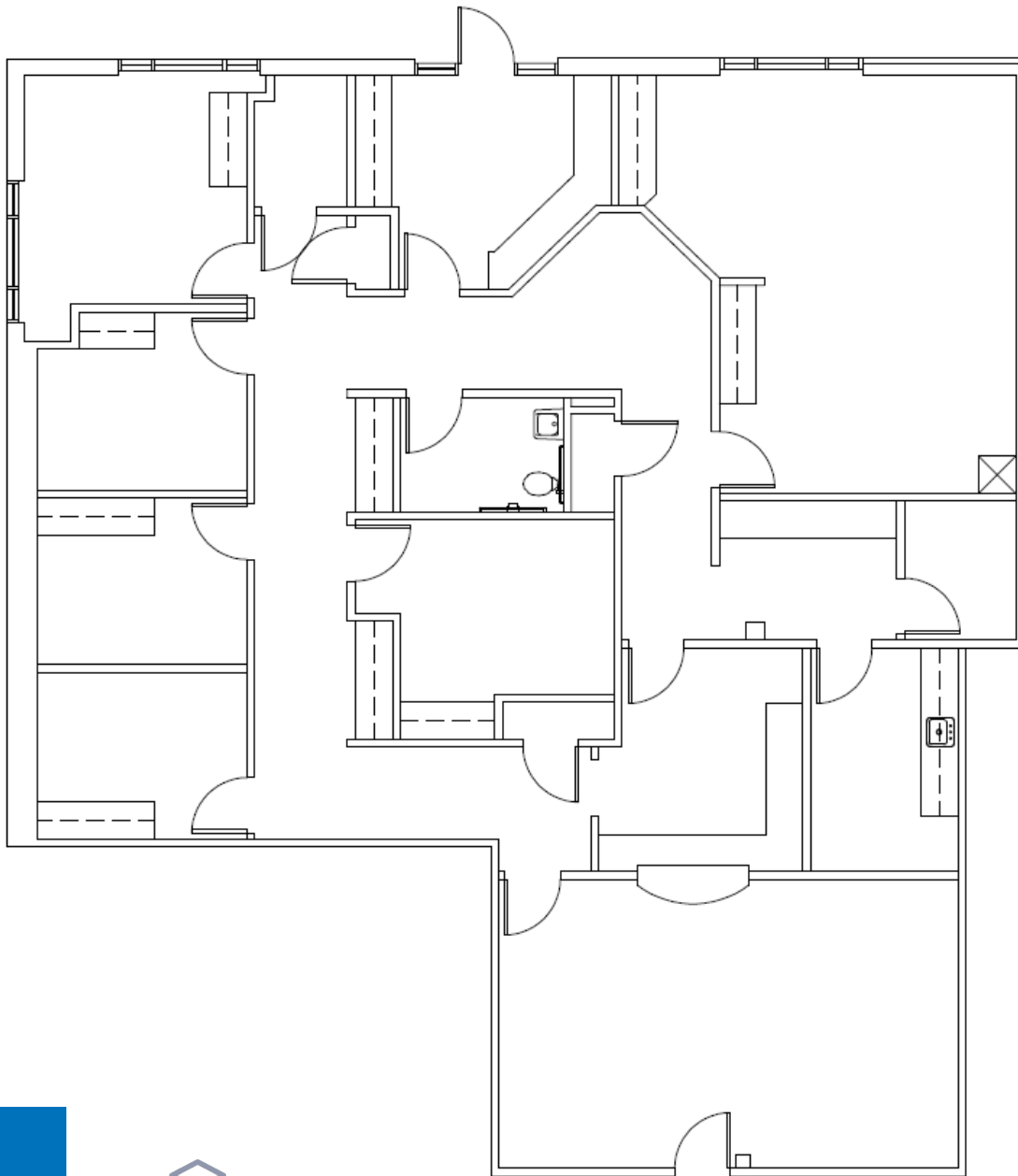
EMILY GWALTNEY | ASSOCIATE

832.408.4029

Emily.Gwaltney@transwestern.com

FLOOR PLAN

SUITE 105: 2,980 SF



TRANSWESTERN

REAL ESTATE
SERVICES



PEARLAND
CENTRAL

MEDICAL PLAZA

The information provided herein was obtained from sources believed reliable; however, Transwestern makes no guarantees, warranties or representations as to the completeness or accuracy thereof. The presentation of this property is submitted subject to errors, omissions, change of price or conditions, prior sale or lease, or withdrawal without notice. Copyright © 2018 Transwestern.