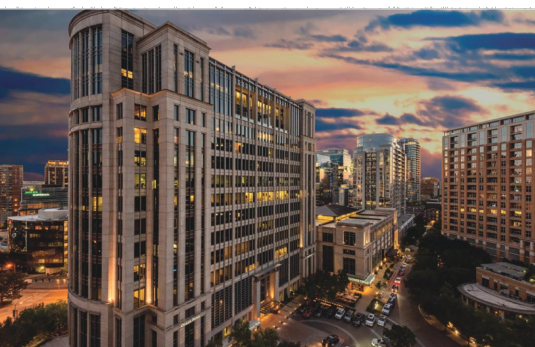
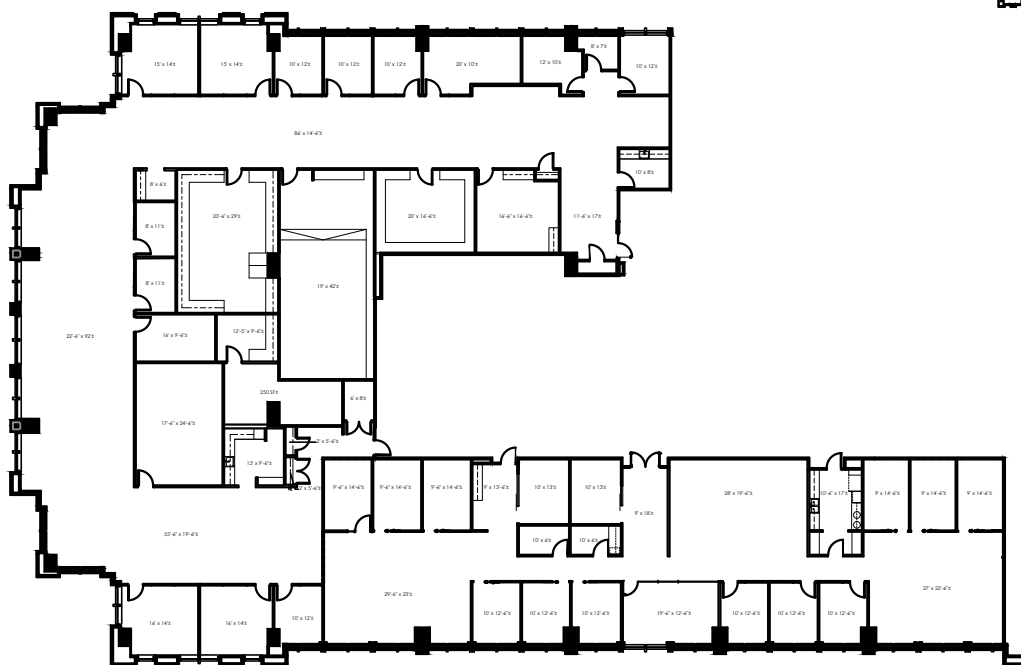
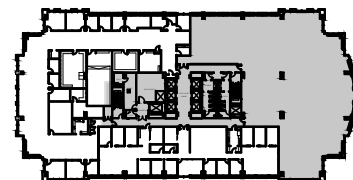




# ROSEWOOD | COURT

Suite 1030-1050  
18,964 RSF

KEY PLAN



For leasing information contact:

Kim Brooks  
(972) 361-1122

[kim.brooks@transwestern.com](mailto:kim.brooks@transwestern.com)

Scott Walker  
(972) 774-2504

[scott.walker@transwestern.com](mailto:scott.walker@transwestern.com)

Laney Delin  
(214) 237-5020

[laney.delin@transwestern.com](mailto:laney.delin@transwestern.com)



2101 Cedar Springs Rd, Dallas, TX 75201 | [rosewoodcourt.com](http://rosewoodcourt.com)

