

OFFICE  
LEASE

133,874 SF

CLASS A  
OFFICE SPACE



  
TRANSWESTERN  
REAL ESTATE  
SERVICES

# TIMBERLANDS III

5445 CORPORATE DRIVE | TROY, MI 48098

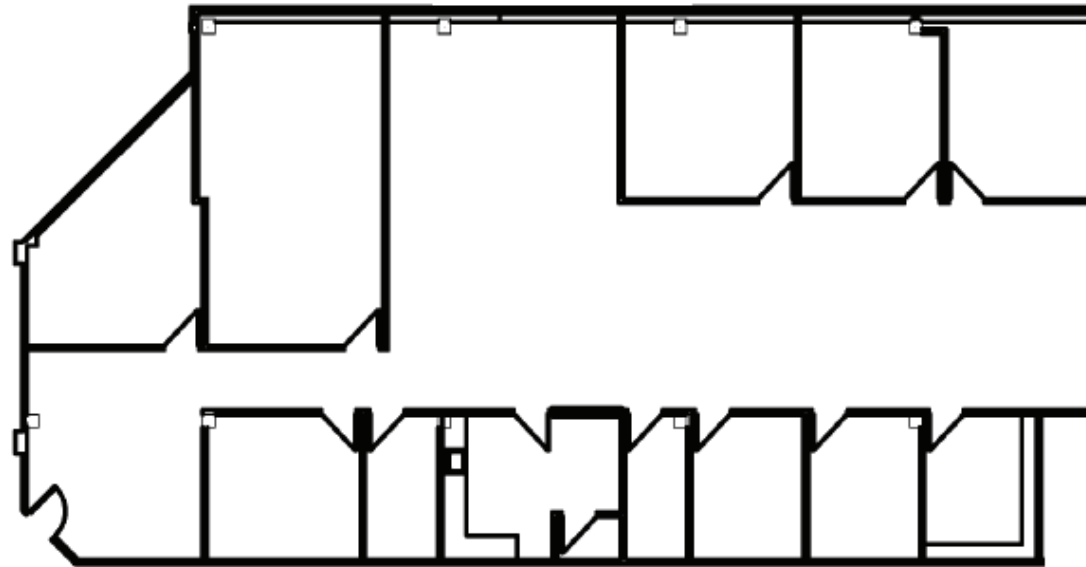
## FLOOR PLAN

SUITE 100 | 4,515 SF

### Leasing Information:

**Bill  
Harvey**  
248.797.9455  
bill.harvey@transwestern.com

**Chuck  
Howard**  
248.821.7772  
charles.howard@transwestern.com



The information provided herein was obtained from sources believed reliable; however, Transwestern makes no guarantees, warranties or representations as to the completeness of accuracy thereof. The presentation of this property is submitted subject to errors, omissions, change of price or conditions, prior to sale or lease, or withdrawal without notice. Copyright © 2020 Transwestern.



NORTH

OFFICE  
LEASE

133,874 SF

CLASS A  
OFFICE SPACE



  
TRANSWESTERN  
REAL ESTATE  
SERVICES

# TIMBERLANDS III

5445 CORPORATE DRIVE | TROY, MI 48098

## FLOOR PLAN

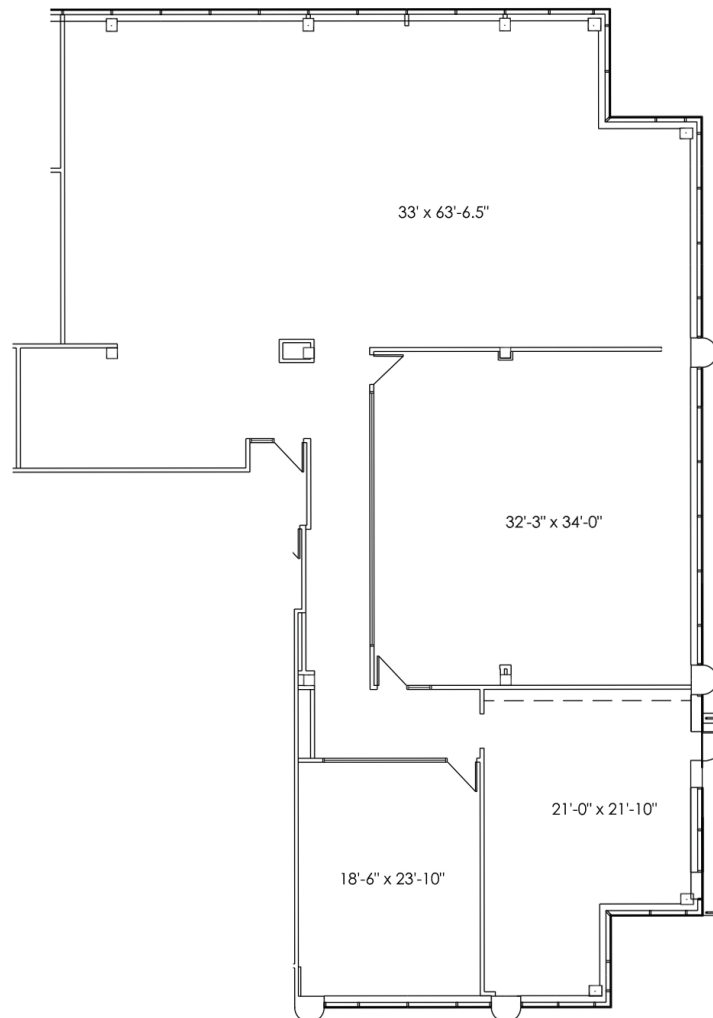
SUITE 110 | 5,784SF

### Leasing Information:

**Bill  
Harvey**  
248.797.9455  
bill.harvey@transwestern.com

**Chuck  
Howard**  
248.821.7772  
charles.howard@transwestern.com

The information provided herein was obtained from sources believed reliable; however, Transwestern makes no guarantees, warranties or representations as to the completeness of accuracy thereof. The presentation of this property is submitted subject to errors, omissions, change of price or conditions, prior to sale or lease, or withdrawal without notice. Copyright © 2020 Transwestern.



NORTH



OFFICE  
LEASE

133,874 SF

CLASS A  
OFFICE SPACE



TRANSWESTERN

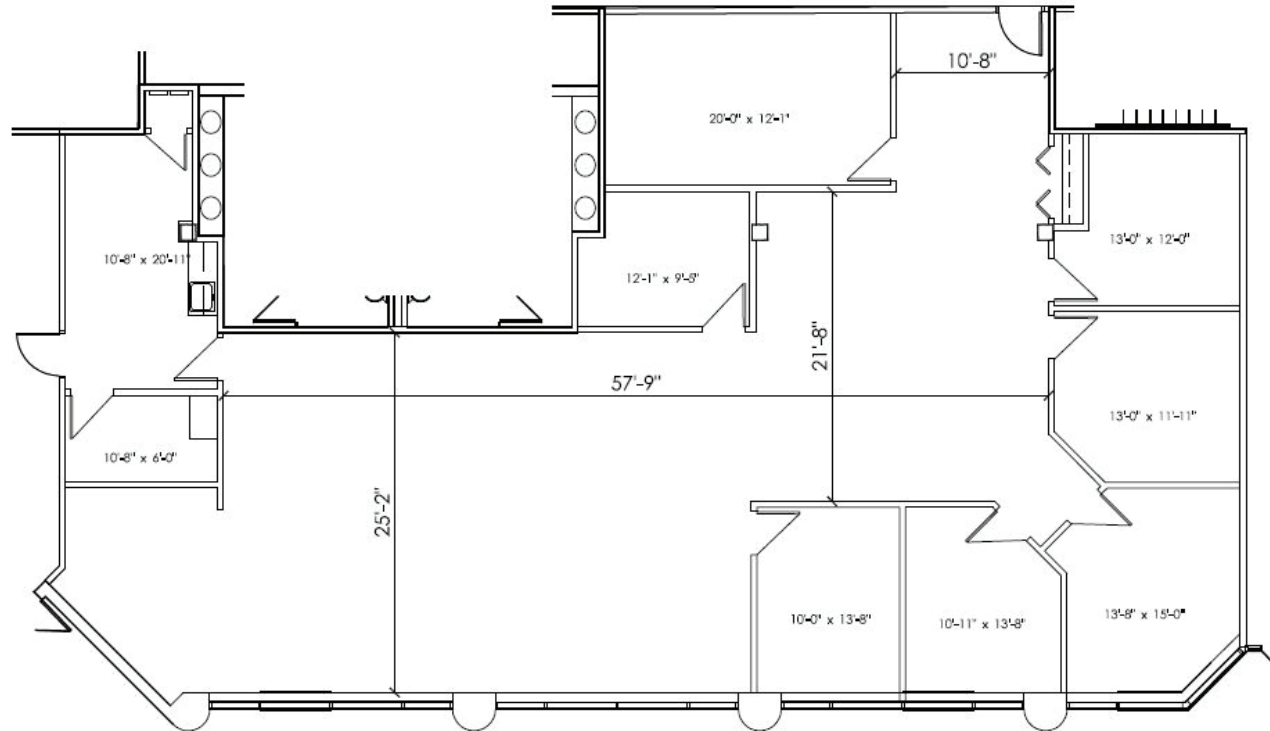
REAL ESTATE  
SERVICES

# TIMBERLANDS III

5445 CORPORATE DRIVE | TROY, MI 48098

## FLOOR PLAN

SUITE 125 | 3,506 SF



### Leasing Information:

**Bill  
Harvey**  
248.797.9455  
bill.harvey@transwestern.com

**Chuck  
Howard**  
248.821.7772  
charles.howard@transwestern.com

The information provided herein was obtained from sources believed reliable; however, Transwestern makes no guarantees, warranties or representations as to the completeness of accuracy thereof. The presentation of this property is submitted subject to errors, omissions, change of price or conditions, prior to sale or lease, or withdrawal without notice. Copyright © 2020 Transwestern.



OFFICE  
LEASE

133,874 SF

CLASS A  
OFFICE SPACE



TRANSWESTERN

REAL ESTATE  
SERVICES

# TIMBERLANDS III

5445 CORPORATE DRIVE | TROY, MI 48098

## FLOOR PLAN

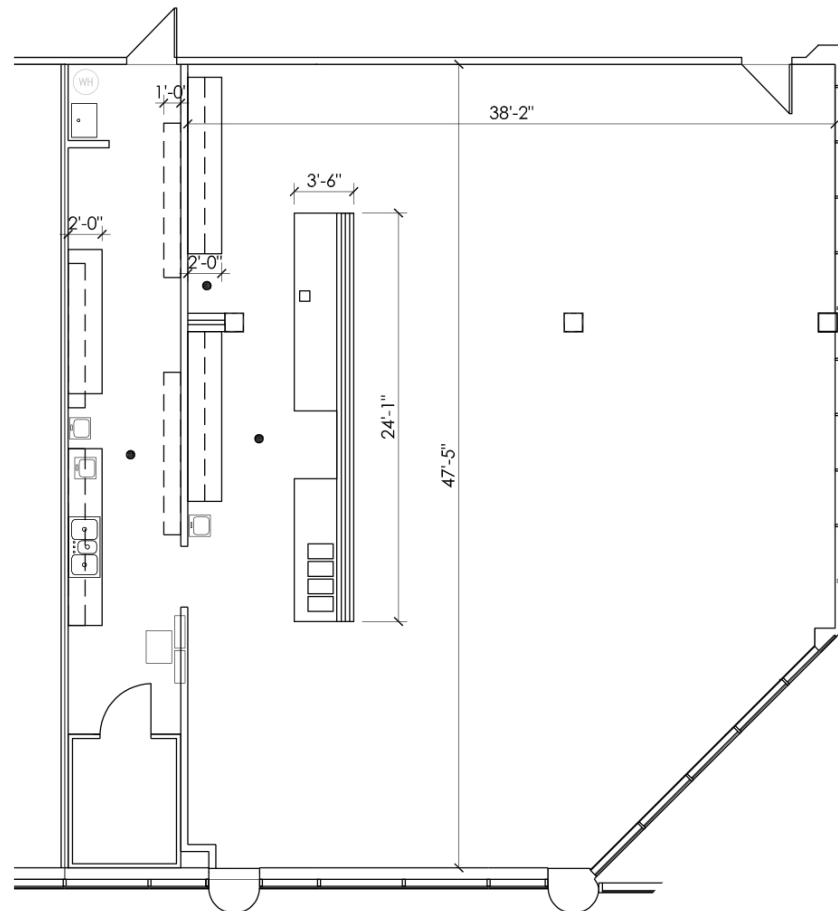
SUITE 155 | 2,391 SF

### Leasing Information:

**Bill  
Harvey**  
248.797.9455  
bill.harvey@transwestern.com

**Chuck  
Howard**  
248.821.7772  
charles.howard@transwestern.com

The information provided herein was obtained from sources believed reliable; however, Transwestern makes no guarantees, warranties or representations as to the completeness of accuracy thereof. The presentation of this property is submitted subject to errors, omissions, change of price or conditions, prior to sale or lease, or withdrawal without notice. Copyright © 2020 Transwestern.



NORTH



OFFICE  
LEASE

133,874 SF

CLASS A  
OFFICE SPACE



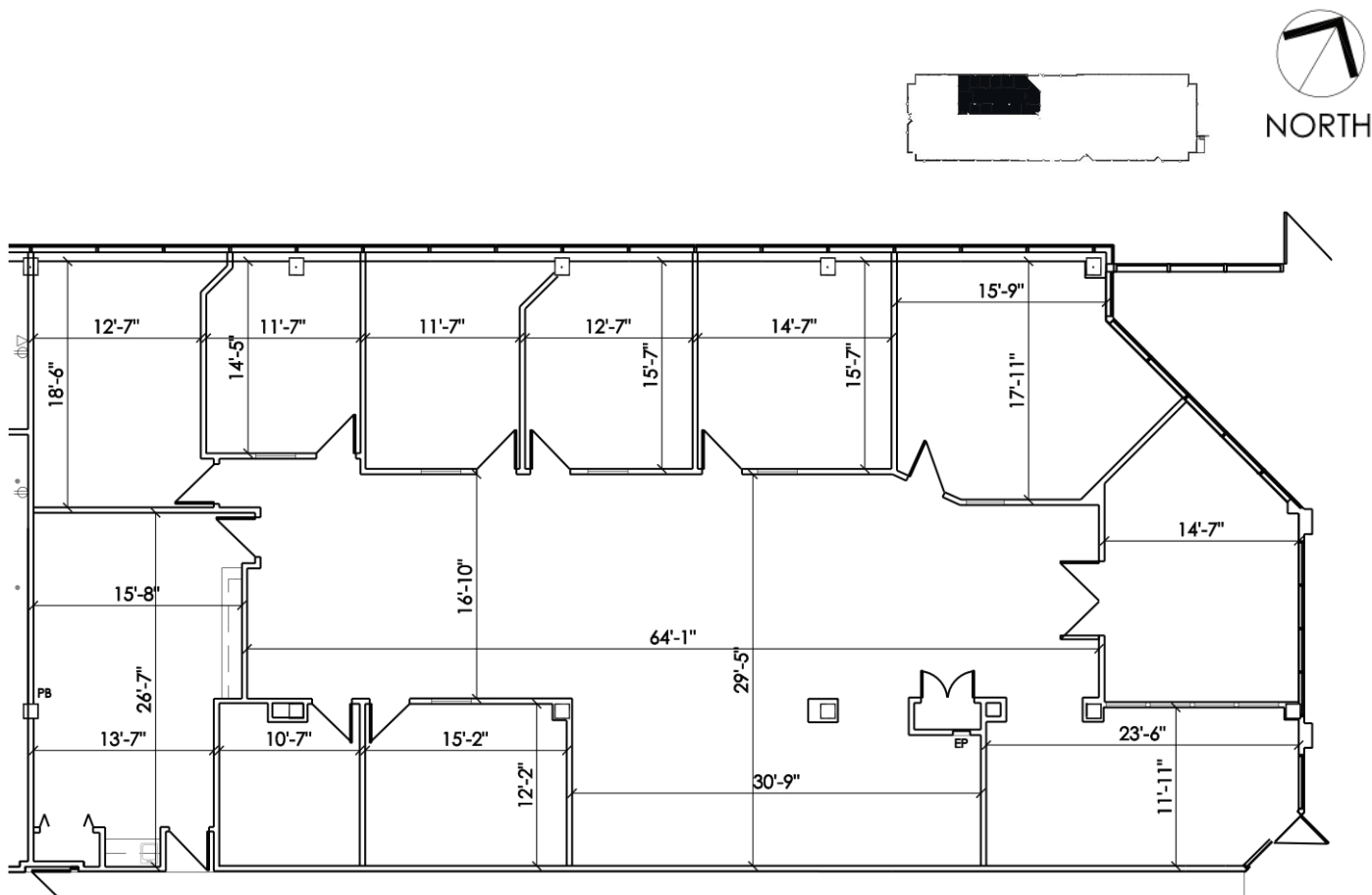
**TRANSWESTERN**  
REAL ESTATE  
SERVICES

# TIMBERLANDS III

5445 CORPORATE DRIVE | TROY, MI 48098

## FLOOR PLAN

SUITE 170 | 4,829 SF



### Leasing Information:

**Bill Harvey**  
248.797.9455  
bill.harvey@transwestern.com

**Chuck Howard**  
248.821.7772  
charles.howard@transwestern.com

The information provided herein was obtained from sources believed reliable; however, Transwestern makes no guarantees, warranties or representations as to the completeness of accuracy thereof. The presentation of this property is submitted subject to errors, omissions, change of price or conditions, prior to sale or lease, or withdrawal without notice. Copyright © 2020 Transwestern.

OFFICE  
LEASE

133,874 SF

CLASS A  
OFFICE SPACE



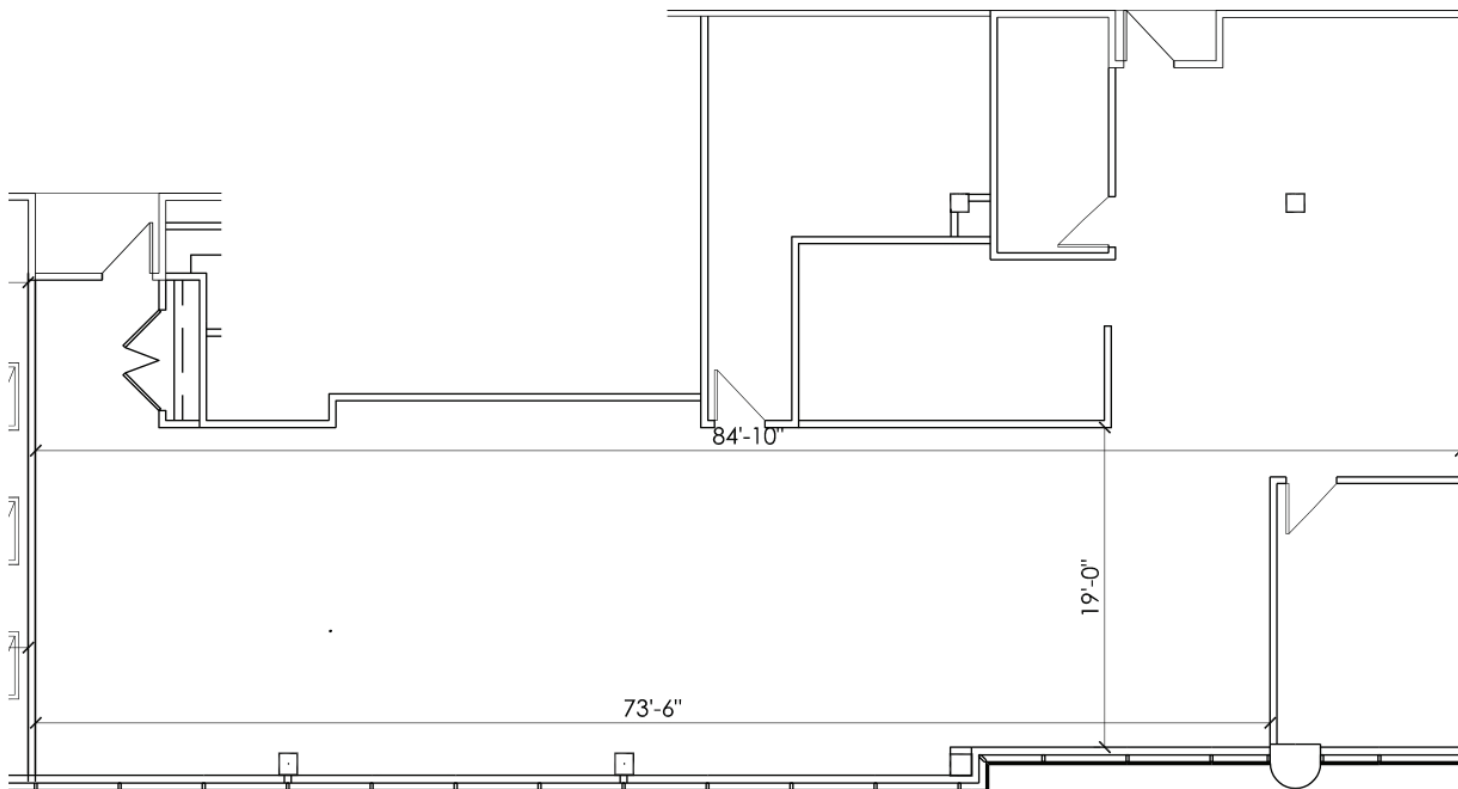
 **TRANSWESTERN**  
REAL ESTATE  
SERVICES

# TIMBERLANDS III

5445 CORPORATE DRIVE | TROY, MI 48098

## FLOOR PLAN

SUITE 305 | 3,466 SF



NORTH



### Leasing Information:

**Bill  
Harvey**  
248.797.9455  
bill.harvey@transwestern.com

**Chuck  
Howard**  
248.821.7722  
charles.howard@transwestern.com

The information provided herein was obtained from sources believed reliable; however, Transwestern makes no guarantees, warranties or representations as to the completeness of accuracy thereof. The presentation of this property is submitted subject to errors, omissions, change of price or conditions, prior to sale or lease, or withdrawal without notice. Copyright © 2020 Transwestern.

OFFICE  
LEASE

133,874 SF

CLASS A  
OFFICE SPACE



 **TRANSWESTERN**  
REAL ESTATE  
SERVICES

# TIMBERLANDS III

5445 CORPORATE DRIVE | TROY, MI 48098

## FLOOR PLAN

SUITE 310 | 3,271 SF



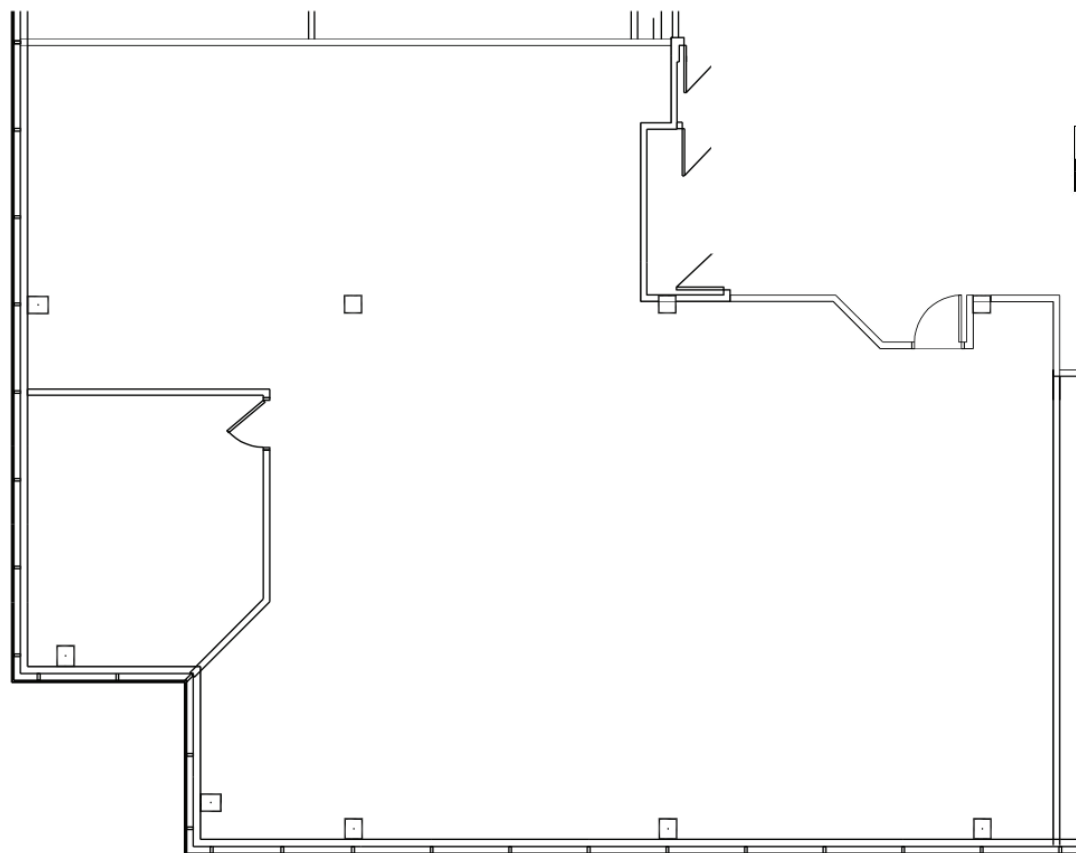
NORTH



### Leasing Information:

**Bill  
Harvey**  
248.797.9455  
bill.harvey@transwestern.com

**Chuck  
Howard**  
248.821.7772  
charles.howard@transwestern.com



The information provided herein was obtained from sources believed reliable; however, Transwestern makes no guarantees, warranties or representations as to the completeness of accuracy thereof. The presentation of this property is submitted subject to errors, omissions, change of price or conditions, prior to sale or lease, or withdrawal without notice. Copyright © 2020 Transwestern.

OFFICE  
LEASE

133,874 SF

CLASS A  
OFFICE SPACE



 **TRANSWESTERN**  
REAL ESTATE  
SERVICES

# TIMBERLANDS III

5445 CORPORATE DRIVE | TROY, MI 48098

## FLOOR PLAN

SUITE 305 & 310 | 6,737 SF



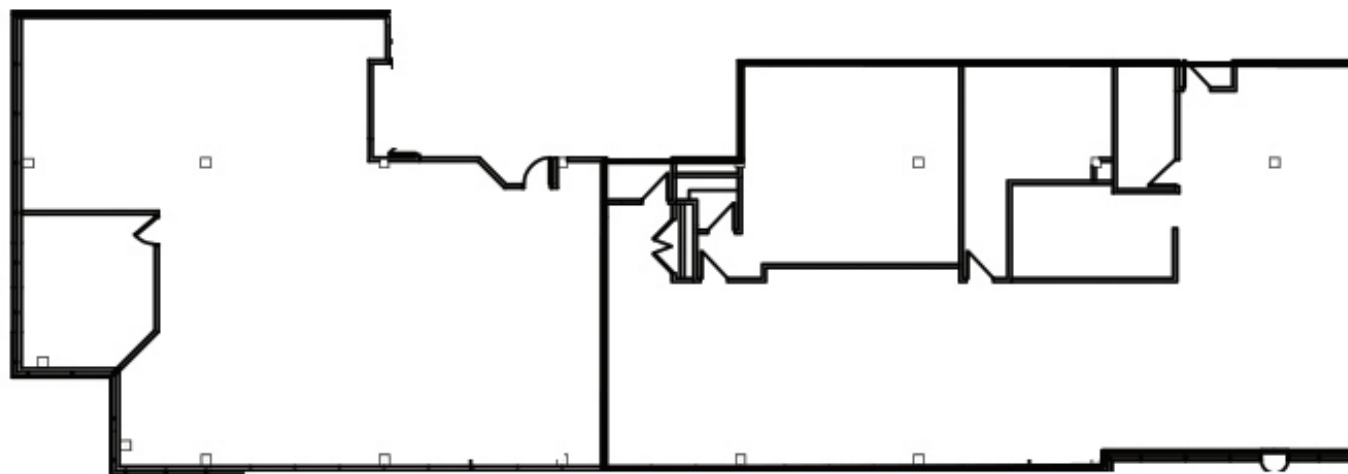
NORTH



### Leasing Information:

**Bill  
Harvey**  
248.797.9455  
bill.harvey@transwestern.com

**Chuck  
Howard**  
248.821.7772  
charles.howard@transwestern.com



The information provided herein was obtained from sources believed reliable; however, Transwestern makes no guarantees, warranties or representations as to the completeness of accuracy thereof. The presentation of this property is submitted subject to errors, omissions, change of price or conditions, prior to sale or lease, or withdrawal without notice. Copyright © 2020 Transwestern.



OFFICE  
LEASE

133,874 SF

CLASS A  
OFFICE SPACE



  
TRANSWESTERN  
REAL ESTATE  
SERVICES

# TIMBERLANDS III

5445 CORPORATE DRIVE | TROY, MI 48098

## FLOOR PLAN

SUITE 340 | 5,908SF

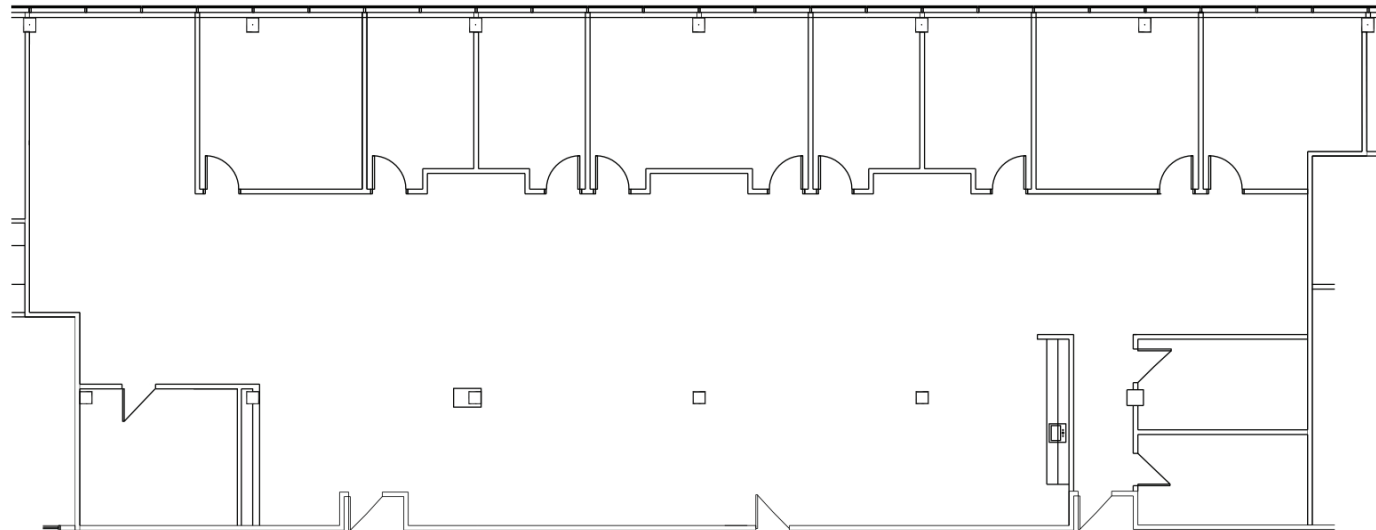


NORTH

### Leasing Information:

**Bill  
Harvey**  
248.797.9455  
bill.harvey@transwestern.com

**Chuck  
Howard**  
248.821.7772  
charles.howard@transwestern.com



The information provided herein was obtained from sources believed reliable; however, Transwestern makes no guarantees, warranties or representations as to the completeness of accuracy thereof. The presentation of this property is submitted subject to errors, omissions, change of price or conditions, prior to sale or lease, or withdrawal without notice. Copyright © 2020 Transwestern.

OFFICE  
LEASE

133,874 SF

CLASS A  
OFFICE SPACE



**TRANSWESTERN**  
REAL ESTATE  
SERVICES

# TIMBERLANDS III

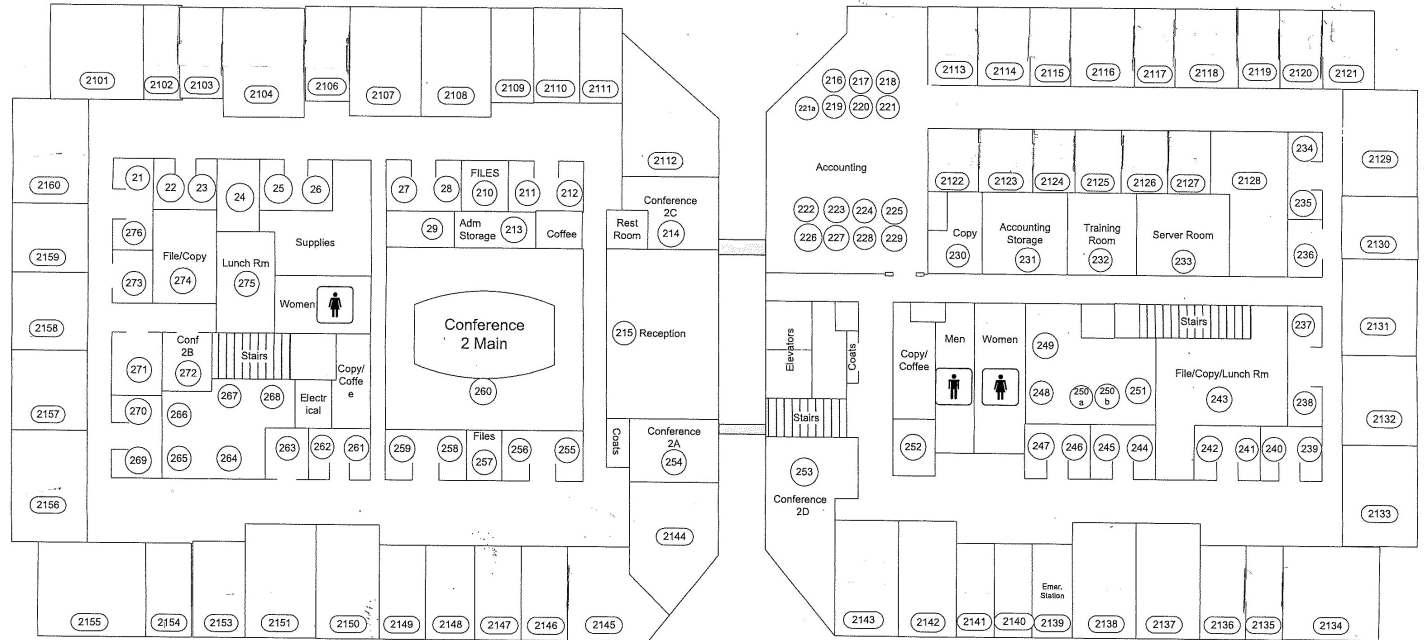
5445 CORPORATE DRIVE | TROY, MI 48098

## FLOOR PLAN

SUITE 200 | 33,388 SF



NORTH



### Leasing Information:

**Bill Harvey**  
248.797.9455  
bill.harvey@transwestern.com

**Chuck Howard**  
248.821.7772  
charles.howard@transwestern.com

The information provided herein was obtained from sources believed reliable; however, Transwestern makes no guarantees, warranties or representations as to the completeness of accuracy thereof. The presentation of this property is submitted subject to errors, omissions, change of price or conditions, prior to sale or lease, or withdrawal without notice. Copyright © 2020 Transwestern.