

2000 Town Center
2000

20th Floor
SOUTHFIELD, MI 48075
21,103 RSF



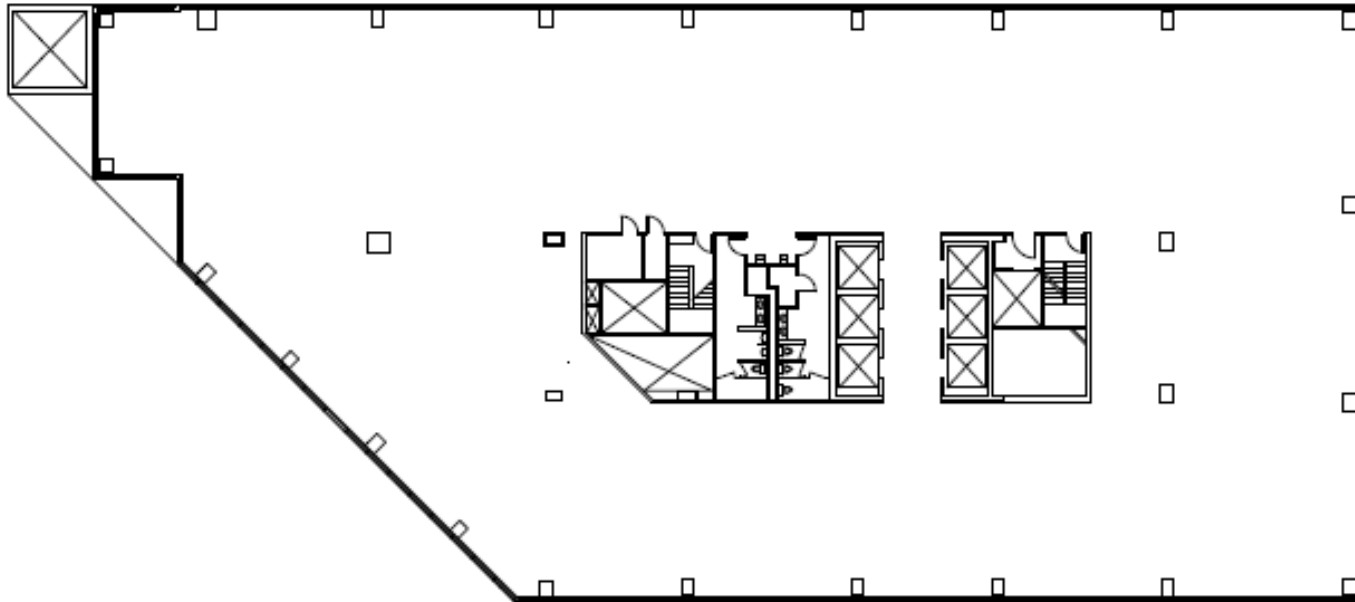
TRANSWESTERN[®]

FOR LEASING CONTACT:

Clarence Gleeson
248-440-1411
Clarence.Gleeson@transwestern.com

Nicholas Prokop
248-440-1427
Nicholas.Prokop@transwestern.com

Patrick Schlenke
248-440-1448
Patrick.Schlenke@transwestern.com



SOUTHFIELD TOWN CENTER

A City Within a City

3000 Town Center
Suite 2500
Southfield, MI 48075
(248) 350-2222
www.southfieldtowncenter.com