

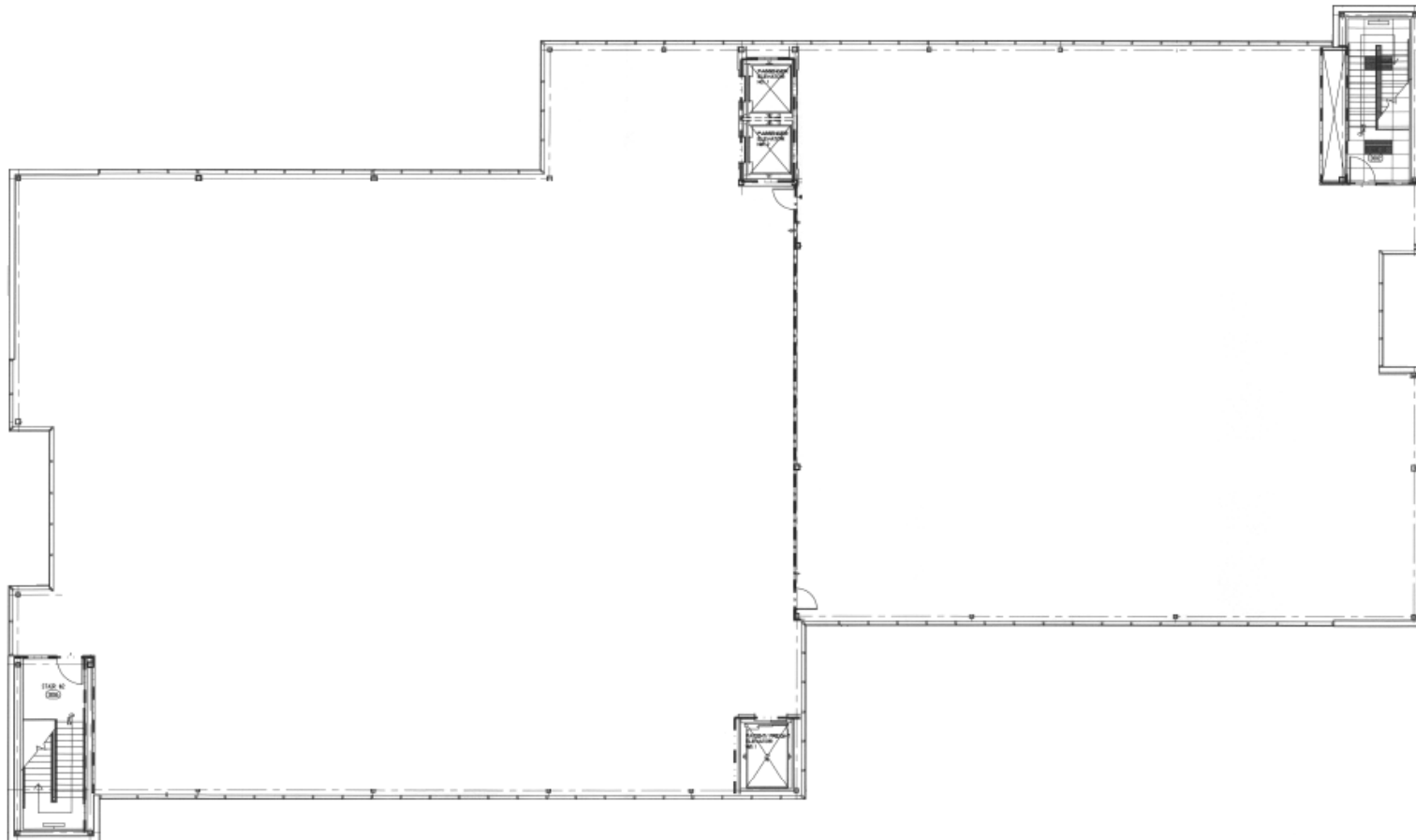
CLASS A MEDICAL OFFICE SPACE FOR LEASE

ELITE HOSPITAL KINGWOOD

23330 US-59 | KINGWOOD, TEXAS 77339

FLOOR PLAN

SECOND FLOOR: 20,000 SF



ELISE PANTAZIS

713.231.1580

elise.pantazis@transwestern.com

SARAH CARTER

713.231.1629

sarah.carter@transwestern.com

CONTACT

LISA BOVERMANN

713.270.0457

lisa.bovermann@transwestern.com