

# SUGAR LAND MEDICAL PLAZA

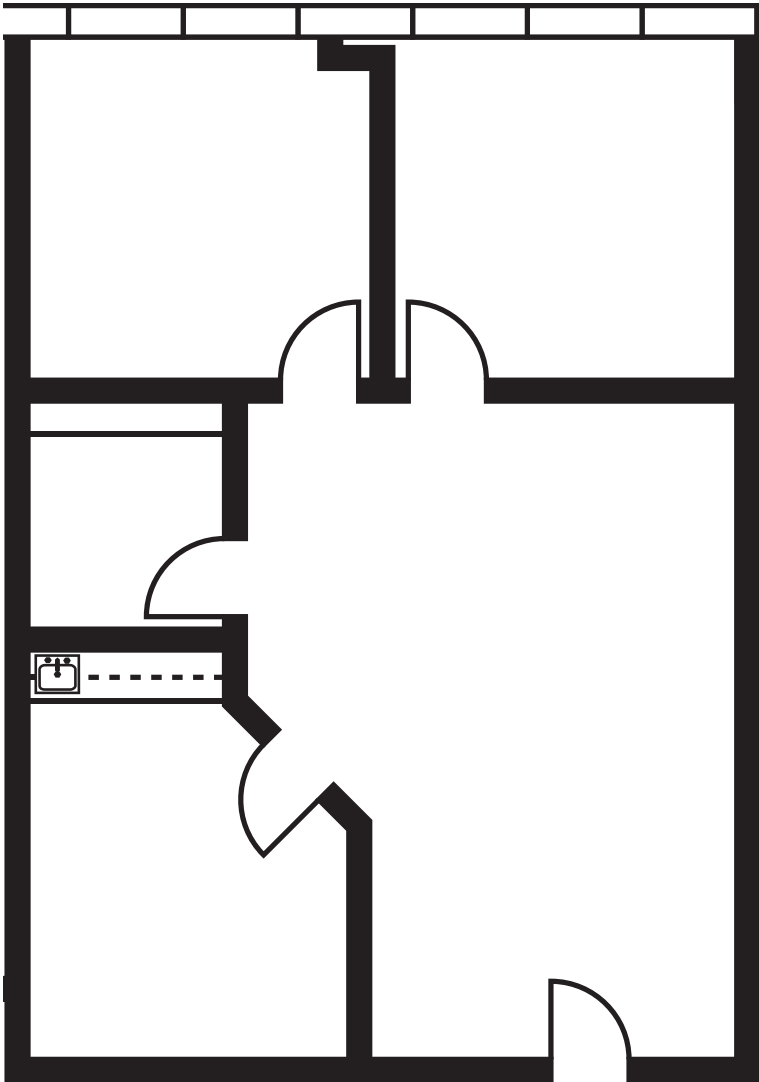
1327 Lake Pointe Parkway | Sugar Land, TX 77478



TRANSWESTERN

REAL ESTATE  
SERVICES

Suite 420  
1,226 SF



### Leasing Information:

<b>Christian Connell</b> 713.231.1588 Christian.CConnell@transwestern.com	<b>Justin Brasell</b> 713.231.1595 Justin.Brasell@transwestern.com
---	--

The information provided herein was obtained from sources believed reliable; however, Transwestern makes no guarantees, warranties or representations as to the completeness of accuracy thereof. The presentation of this property is submitted subject to errors, omissions, change of price or conditions, prior to sale or lease, or withdrawal without notice. Copyright © 2023 Transwestern.