

OFFICE
LEASE

129,562 SF

CLASS A
OFFICE SPACE




TRANSWESTERN
REAL ESTATE
SERVICES

TIMBERLANDS IV

1450 W LONG LAKE RD | TROY, MI 48098

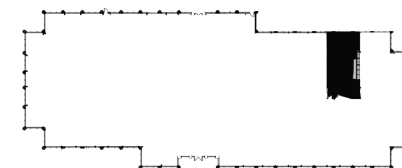
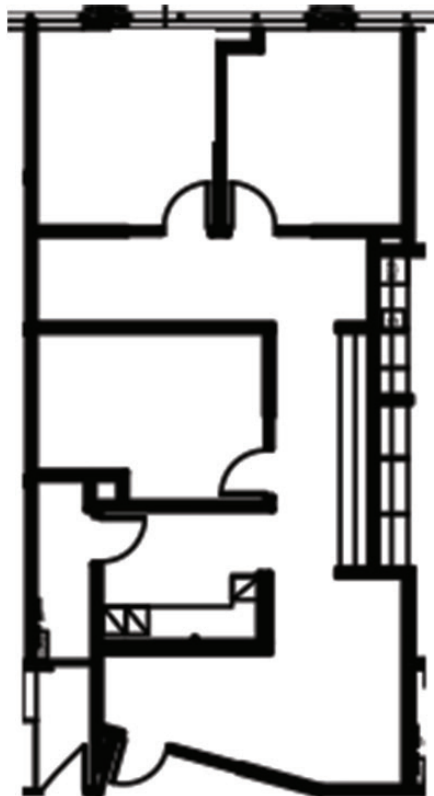
FLOOR PLAN

SUITE 180 | 1,351 RSF

Leasing Information:

**Bill
Harvey**
248.797.9455
bill.harvey@transwestern.com

**Chuck
Howard**
248.821.7722
charles.howard@transwestern.com



The information provided herein was obtained from sources believed reliable; however, Transwestern makes no guarantees, warranties or representations as to the completeness of accuracy thereof. The presentation of this property is submitted subject to errors, omissions, change of price or conditions, prior to sale or lease, or withdrawal without notice. Copyright © 2020 Transwestern.