

## BUILDING FEATURES

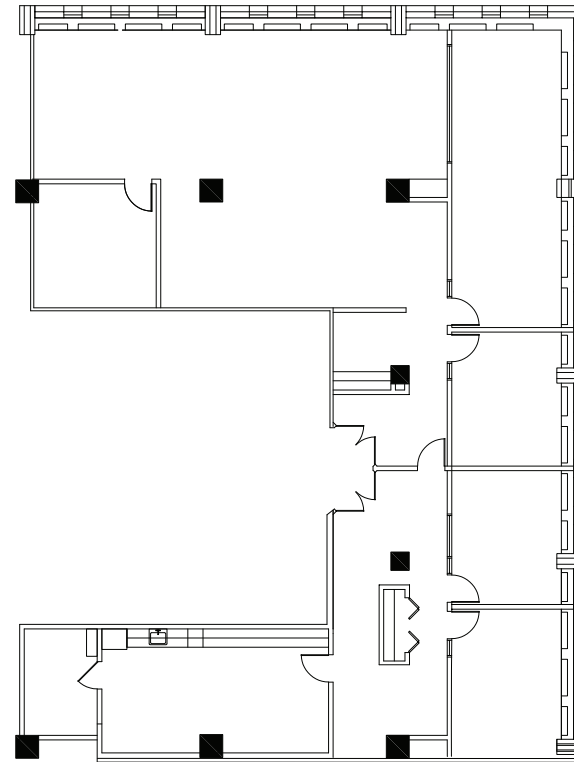


- Strategic Location
- World Class Address
- Fitness Center
- Tenant Lounge
- Conference Center
- Concierge Services
- Adjacent Parking
- 24-hour Security
- Bike Room

## FOR INFORMATION, PLEASE CONTACT

Kathleen Bertrand  
312.881.7046

kathleen.bertrand@transwestern.com



## SUITE FEATURES

- 4 private offices
- Large conference room
- Open space for workstations

## KEY

