

**MEDICAL/  
OFFICE  
FOR LEASE**

7,650 SF  
Available

Building A -  
Shell Space

Free Surface  
Parking

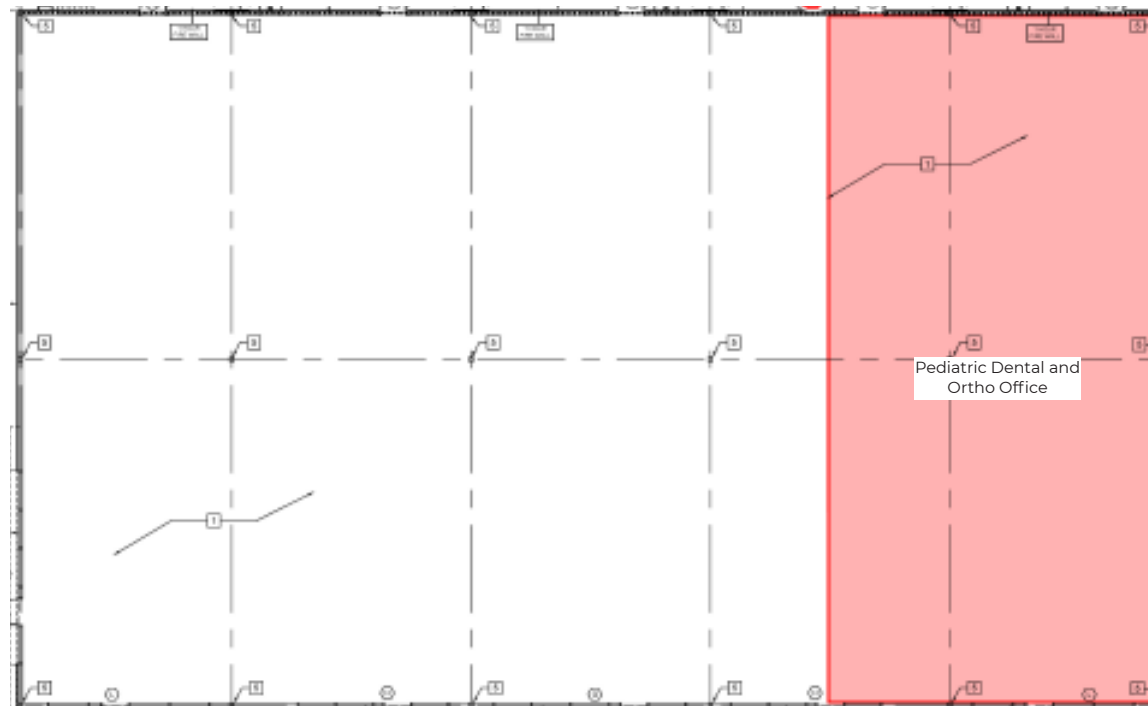


**TRANSWESTERN**

REAL ESTATE  
SERVICES

# PORTER LAKE DRIVE

24004 Porter Ranch Lane | Katy, TX 77493



## Leasing Information:

Sandra Wolters | Senior Associate  
832.671.7717  
Sandra.Wolters@transwestern.com

The information provided herein was obtained from sources believed reliable; however, Transwestern makes no guarantees, warranties or representations as to the completeness of accuracy thereof. The presentation of this property is submitted subject to errors, omissions, change of price or conditions, prior to sale or lease, or withdrawal without notice.  
Copyright © 2023 Transwestern.