

# SUGAR LAND MEDICAL PLAZA

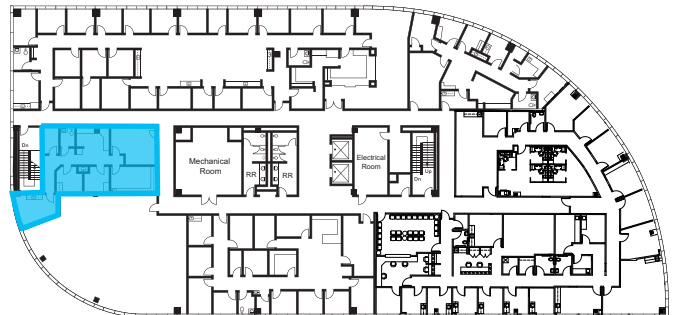
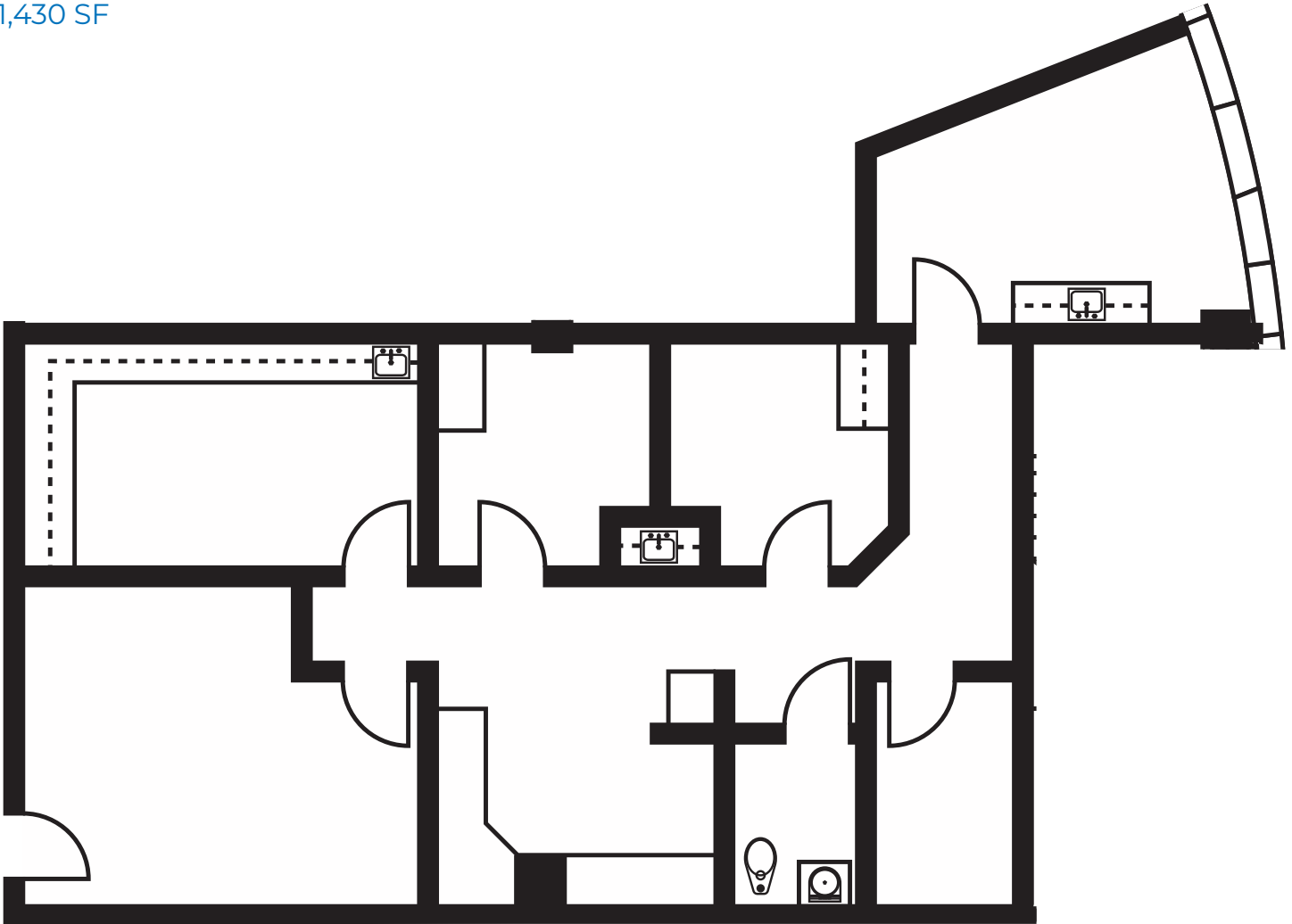
1327 Lake Pointe Parkway | Sugar Land, TX 77478



TRANSWESTERN

REAL ESTATE  
SERVICES

Suite 535  
1,430 SF



## Leasing Information:

**Justin Davis**  
713.270.3334  
Justin.Davis@transwestern.com

**Christian Connell**  
713.231.1588  
Christian.Connell@transwestern.com

**Justin Brasell**  
713.231.1595  
Justin.Brasell@transwestern.com

The information provided herein was obtained from sources believed reliable; however, Transwestern makes no guarantees, warranties or representations as to the completeness of accuracy thereof. The presentation of this property is submitted subject to errors, omissions, change of price or conditions, prior to sale or lease, or withdrawal without notice. Copyright © 2023 Transwestern.