

OFFICE
LEASE

93,936 SF

CLASS A
OFFICE SPACE



TRANSWESTERN
REAL ESTATE
SERVICES

TIMBERLANDS II

5435 CORPORATE DRIVE | TROY, MI 48098

FLOOR PLAN

SUITE 350 | 9,348 RSF



Leasing Information:

**Bill
Harvey**
248.797.9455
bill.harvey@transwestern.com

**Chuck
Howard**
248.821.7722
charles.howard@transwestern.com

The information provided herein was obtained from sources believed reliable; however, Transwestern makes no guarantees, warranties or representations as to the completeness of accuracy thereof. The presentation of this property is submitted subject to errors, omissions, change of price or conditions, prior to sale or lease, or withdrawal without notice. Copyright © 2020 Transwestern.

OFFICE
LEASE

93,936 SF

CLASS A
OFFICE SPACE



TRANSWESTERN

REAL ESTATE
SERVICES

TIMBERLANDS II

5435 CORPORATE DRIVE | TROY, MI 48098

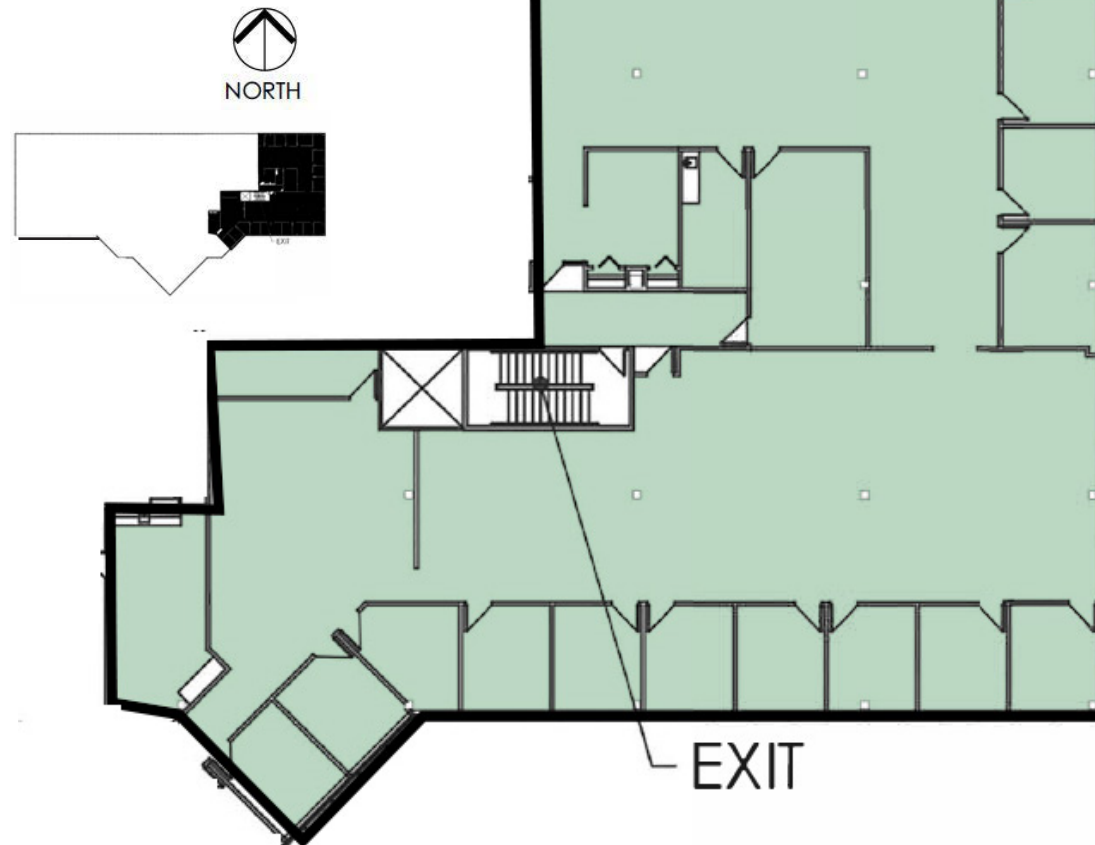
EXHIBIT

SUITE 350 | 9,348 RSF

Leasing Information:

**Bill
Harvey**
248.797.9455
bill.harvey@transwestern.com

**Chuck
Howard**
248.821.7722
charles.howard@transwestern.com



The information provided herein was obtained from sources believed reliable; however, Transwestern makes no guarantees, warranties or representations as to the completeness of accuracy thereof. The presentation of this property is submitted subject to errors, omissions, change of price or conditions, prior to sale or lease, or withdrawal without notice. Copyright © 2020 Transwestern.