

MEDICAL OFFICE SPACE FOR LEASE

# PEARLAND CENTRAL MED PLAZA

8619 BROADWAY | PEARLAND, TEXAS 77584

CONTACT

**SARAH CARTER | VP**

713.231.1629

sarah.carter@transwestern.com

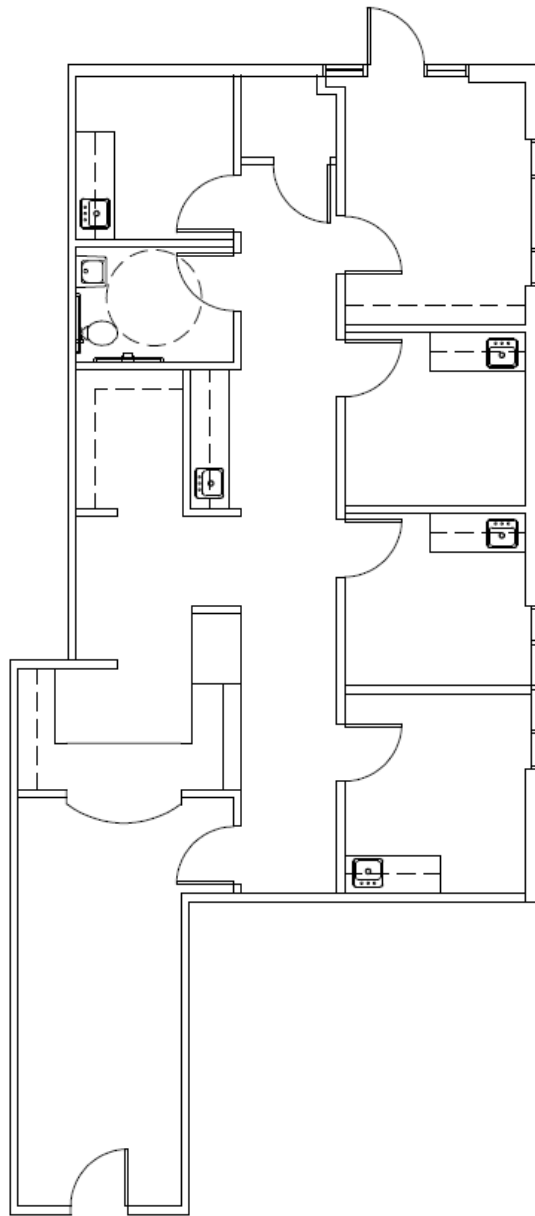
**EMILY GWALTNEY | ASSOCIATE**

832.408.4029

Emily.Gwaltney@transwestern.com

## FLOOR PLAN

**SUITE 101: 1,358 SF**



TRANSWESTERN

REAL ESTATE  
SERVICES



PEARLAND  
CENTRAL

MEDICAL PLAZA

The information provided herein was obtained from sources believed reliable; however, Transwestern makes no guarantees, warranties or representations as to the completeness or accuracy thereof. The presentation of this property is submitted subject to errors, omissions, change of price or conditions, prior sale or lease, or withdrawal without notice. Copyright © 2018 Transwestern.