

Marietta Health Park

AVAILABLE FOR LEASE

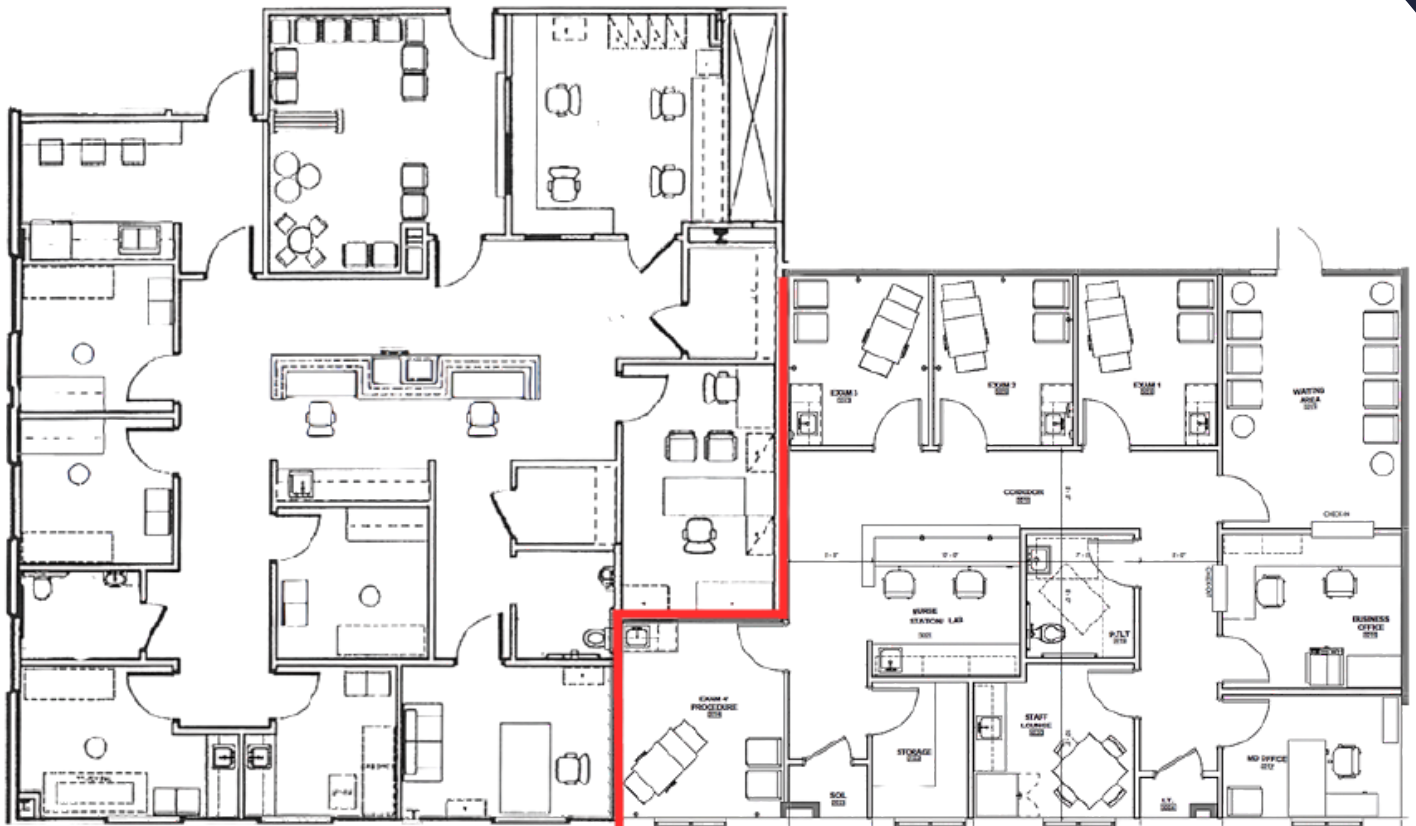
780 Canton Rd NE, Marietta, GA 30060

Suite 310 / 350
3rd Floor

4,466 RSF
Available

Medical Office
Suite

Available for
Lease Now



THIRD FLOOR PLAN



Suite 350
2,600 RSF

Suite 310
1,866 RSF

**SOUTHEAST
HEALTHCARE
ADVISORY
SERVICES**

STEVE HALL
Senior Managing Director,
Healthcare Advisory Services
404.842.6560
steve.hall@transwestern.com

JOHN V. LOPEZ, CCIM, RPA
Managing Director,
Healthcare Advisory Services
404.842.6562
john.lopez@transwestern.com

BO STUART
Vice President,
Healthcare Advisory Services
404.842.6556
bo.stuart@transwestern.com

MARSH HAZLEHURST
Senior Associate,
Healthcare Advisory Services
404.842.6574
marsh.hazlehurst@transwestern.com