

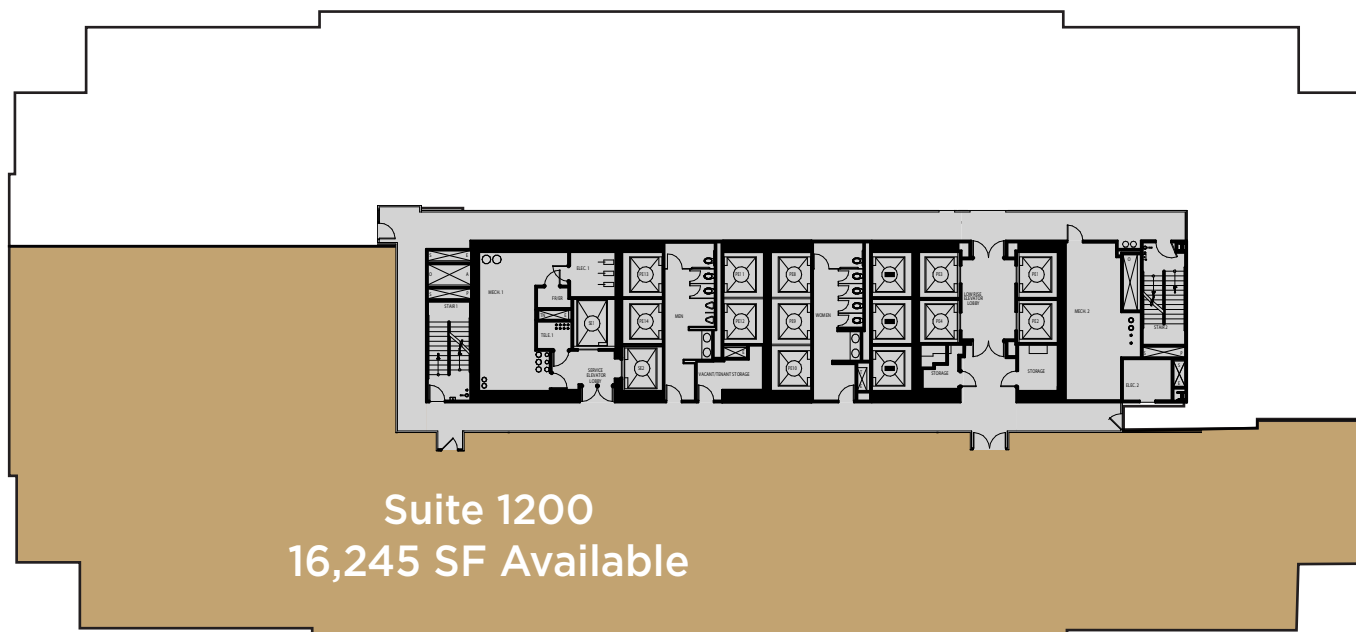
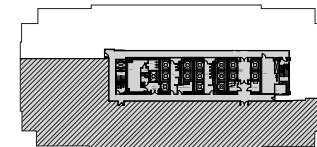


the

IF IT Y

Suite 1200

12th Floor | 16,245 SF



Suite 1200
16,245 SF Available

NICOLLET AVENUE

S 6TH STREET

TRINETTE WACKER

612-372-1230
trINETTE.wacker@transwestern.com

KATIE HOPP

612-372-1205
katie.hopp@transwestern.com

JOE BUCKINGHAM

612-372-1211
joe.buckingham@transwestern.com

