

The Rotunda Building

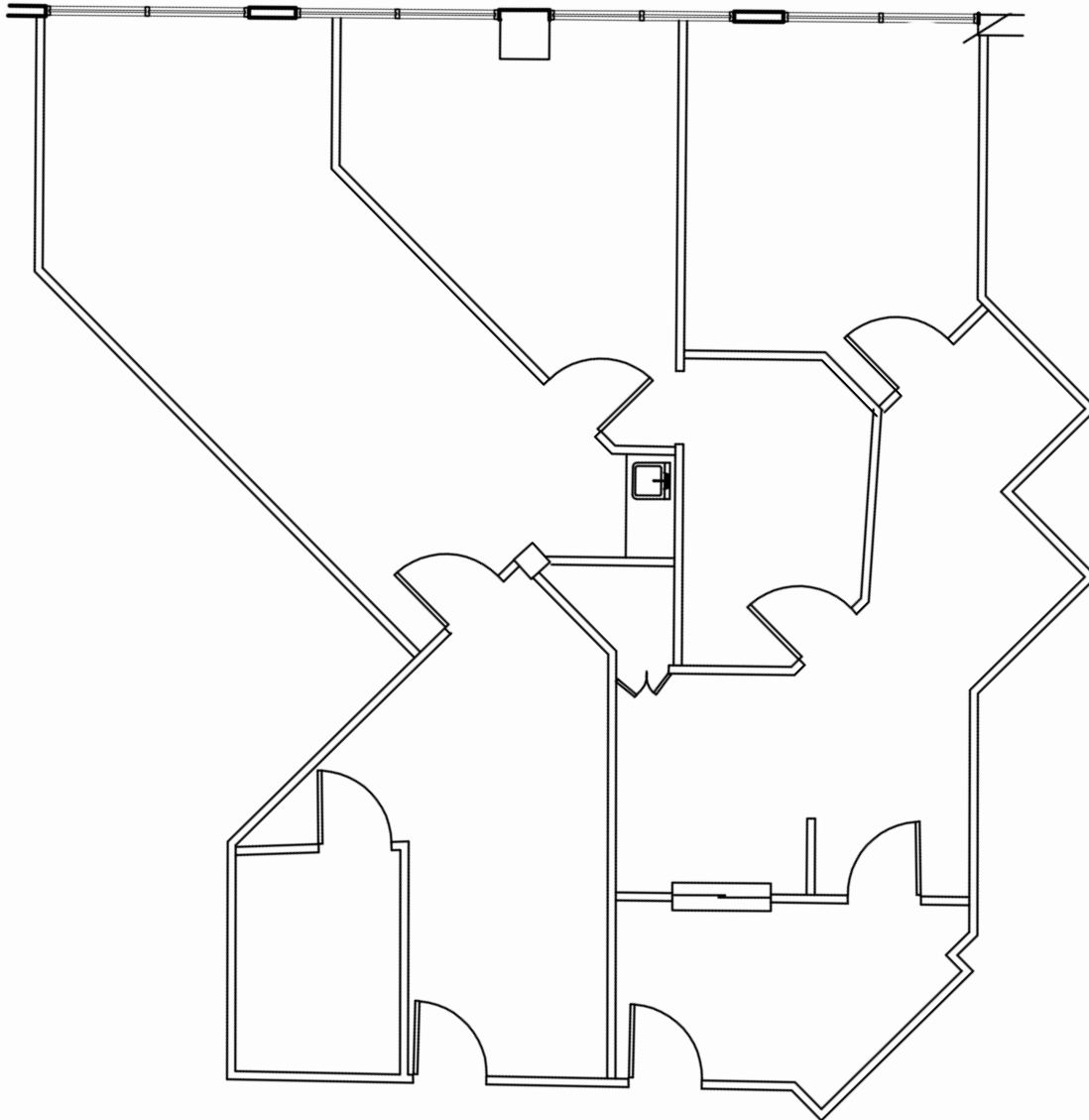
5819 Highway 6 | Missouri City, TX 77459



TRANSWESTERN

REAL ESTATE
SERVICES

Second Floor
Suite 250 -1,797 SF



Leasing Information:

**Heinrich
Cronje**

832.408.4067

Heinrich.Cronje@transwestern.com

The information provided herein was obtained from sources believed reliable; however, Transwestern makes no guarantees, warranties or representations as to the completeness of accuracy thereof. The presentation of this property is submitted subject to errors, omissions, change of price or conditions, prior to sale or lease, or withdrawal without notice. Copyright © 2022 Transwestern.