

# SUGAR LAND MEDICAL PLAZA

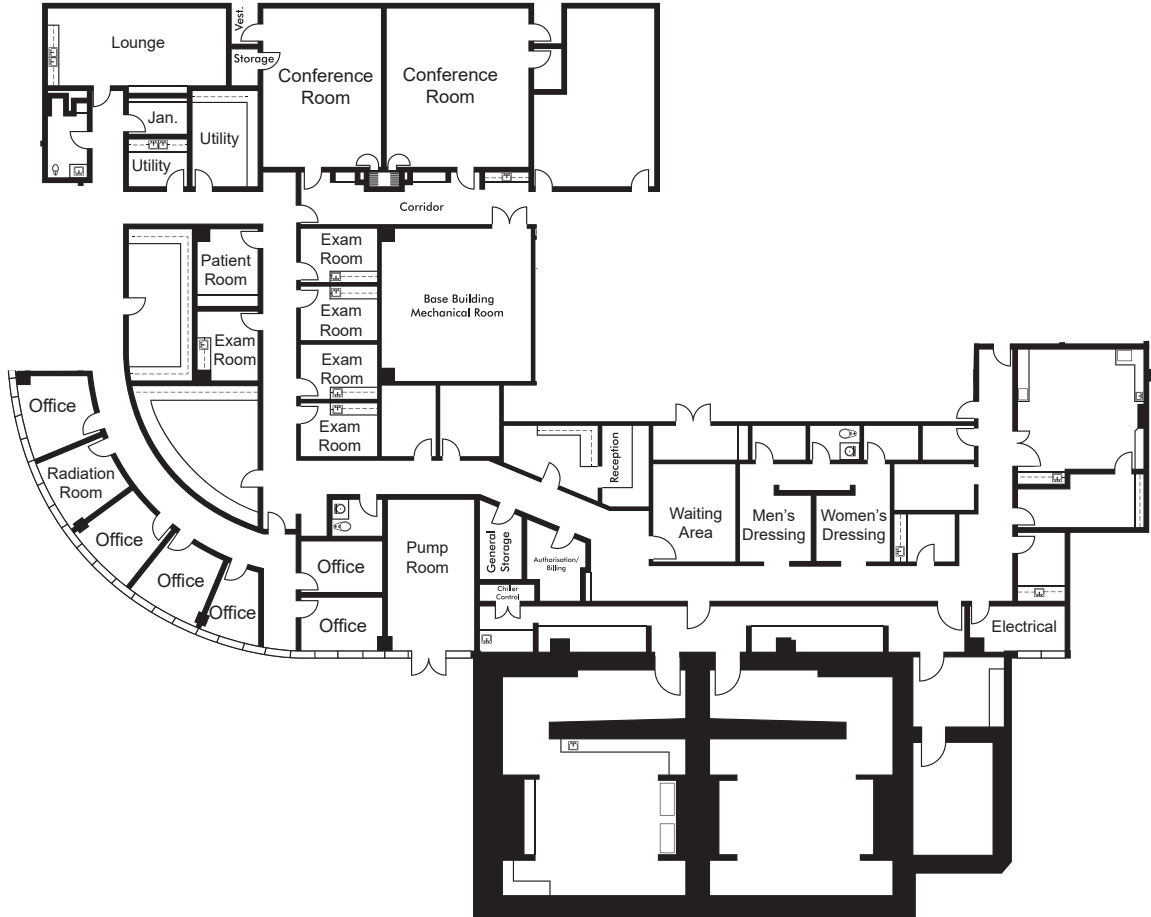
1327 Lake Pointe Parkway | Sugar Land, TX 77478



TRANSWESTERN

REAL ESTATE  
SERVICES

Suite 100  
13,565 SF



## Leasing Information:

**Christian  
Connell**

713.231.1588

Christian.Connell@transwestern.com

**Justin  
Brasell**

713.231.1595

Justin.Brasell@transwestern.com

The information provided herein was obtained from sources believed reliable; however, Transwestern makes no guarantees, warranties or representations as to the completeness of accuracy thereof. The presentation of this property is submitted subject to errors, omissions, change of price or conditions, prior to sale or lease, or withdrawal without notice. Copyright © 2023 Transwestern.