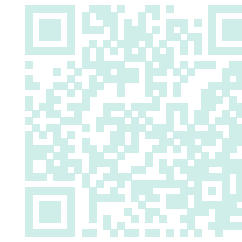
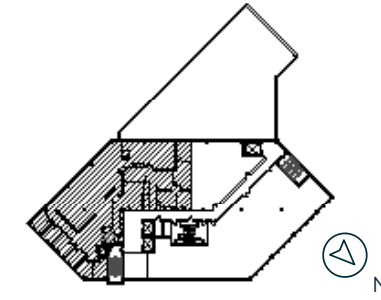


# Burnsville Medical Center

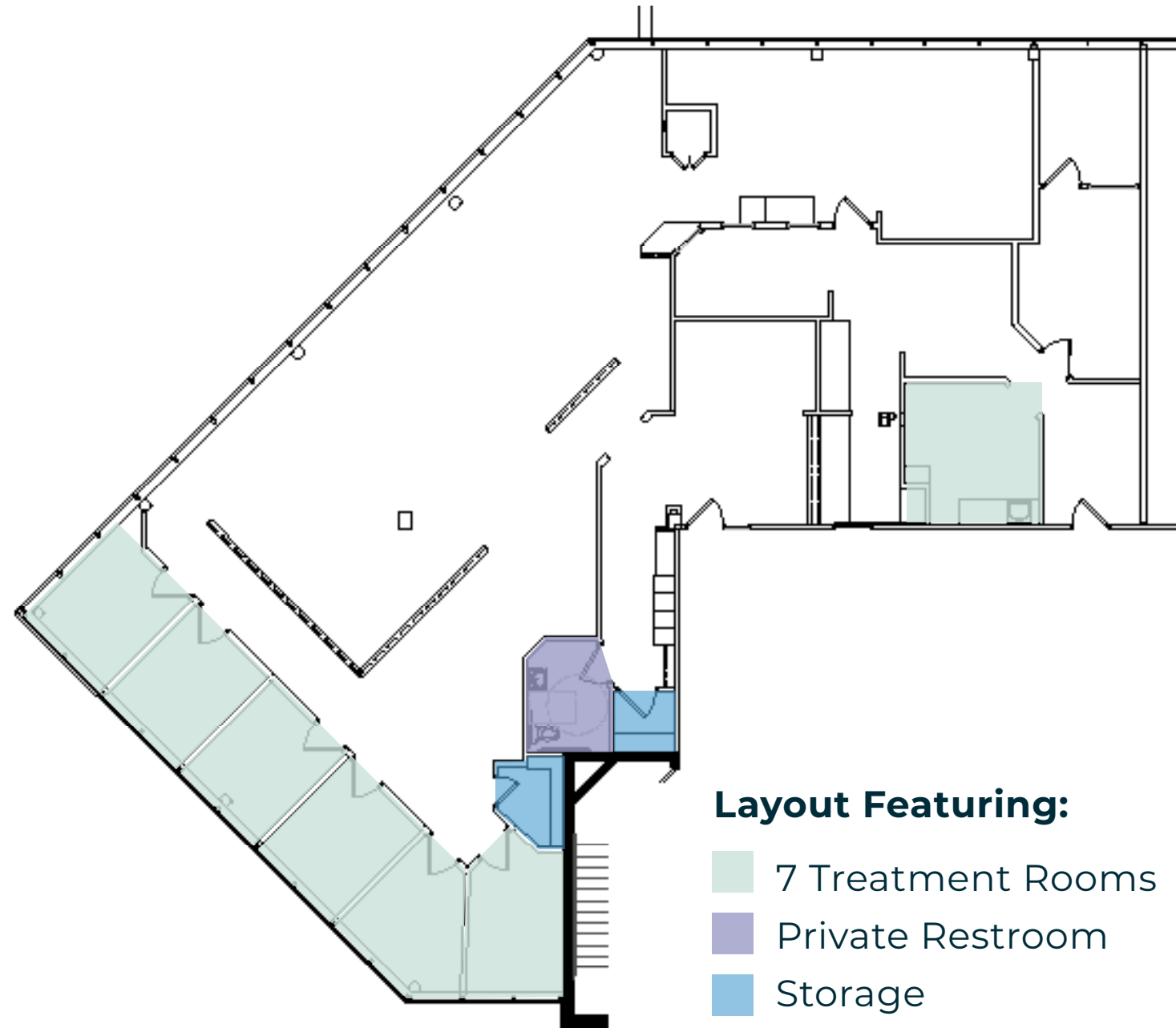
Suite 200 | 4,845 RSF



**3D Tour!**



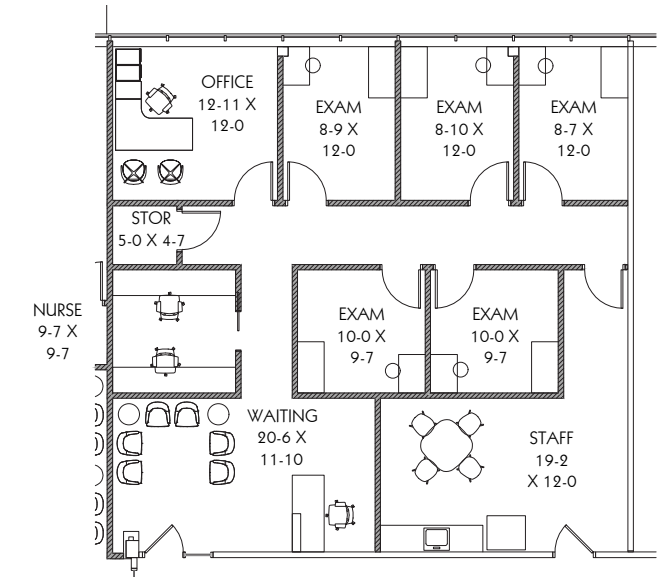
KEY PLAN - 2ND FLOOR



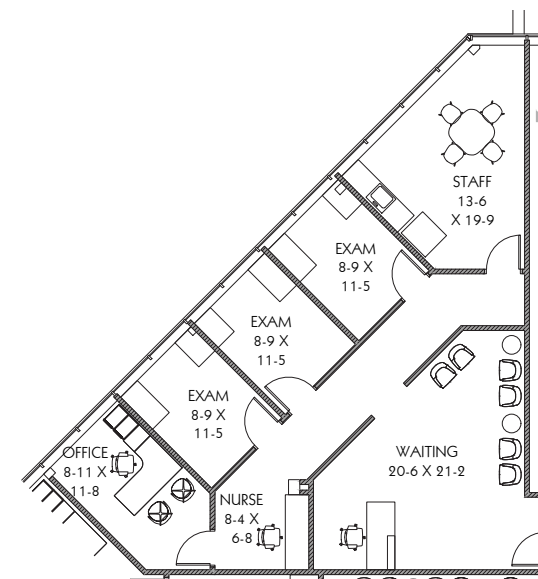
### Layout Featuring:

- 7 Treatment Rooms
- Private Restroom
- Storage

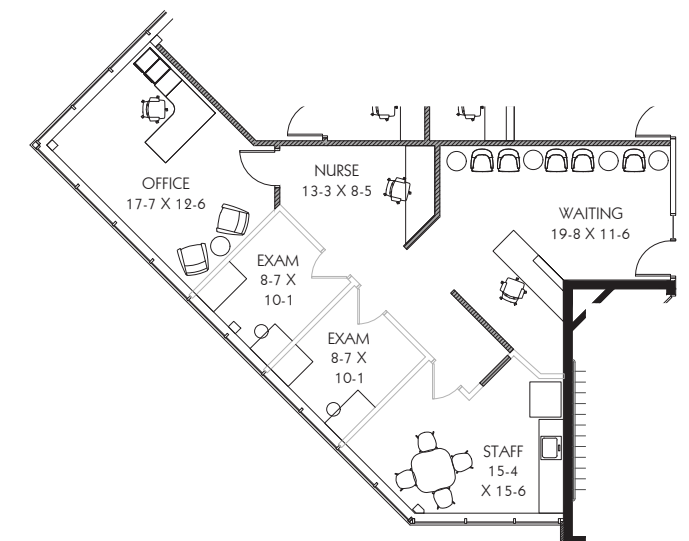
## DEMISING OPTIONS:



1,952 SF



1,534 SF



1,359 SF

**Trinette Wacker**

612-372-1230  
trinette.wacker@transwestern.com

**Frank Richie**

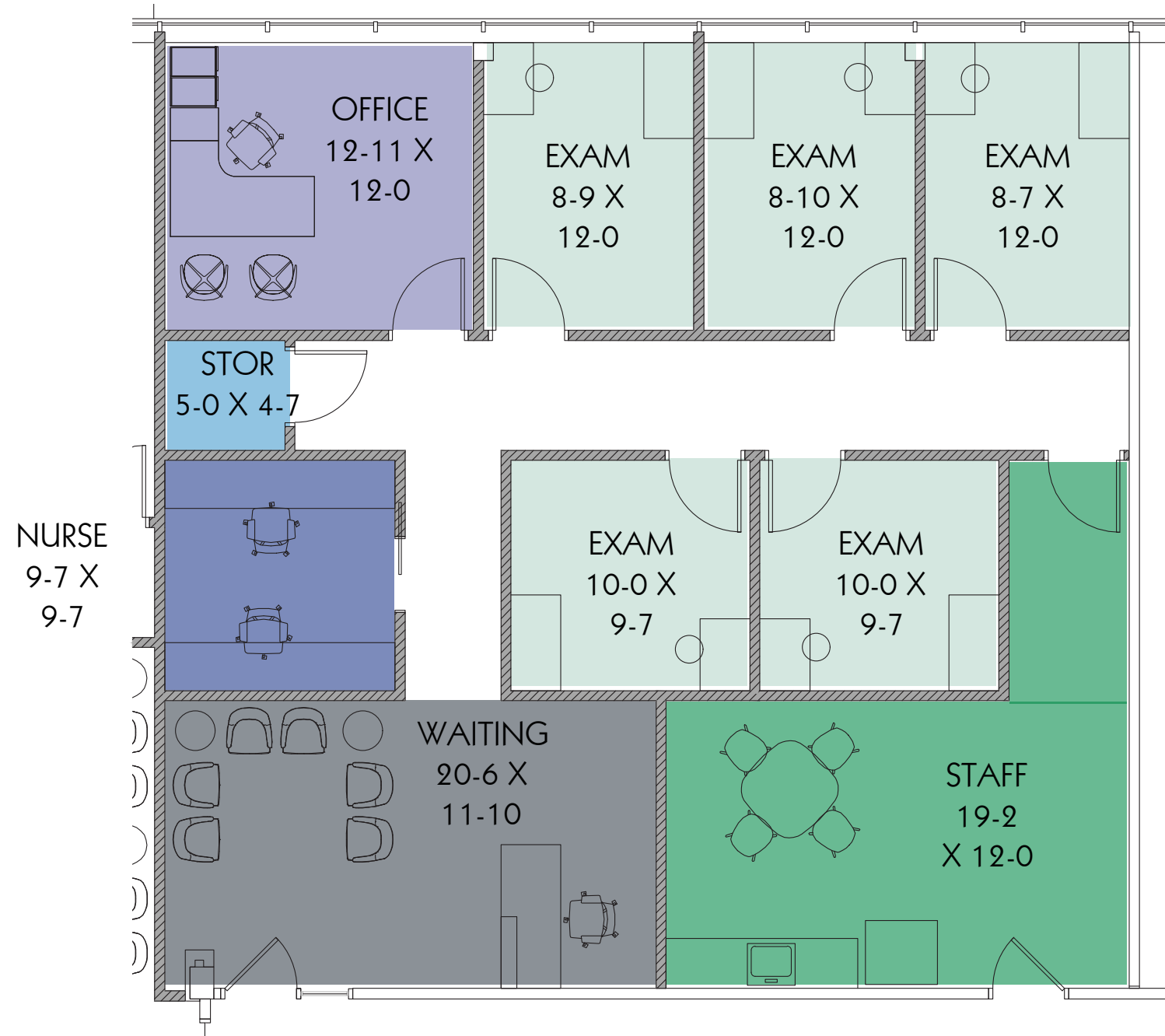
612-359-1674  
frank.richie@transwestern.com

**Max Stewart**

612-268-5314  
max.stewart@transwestern.com

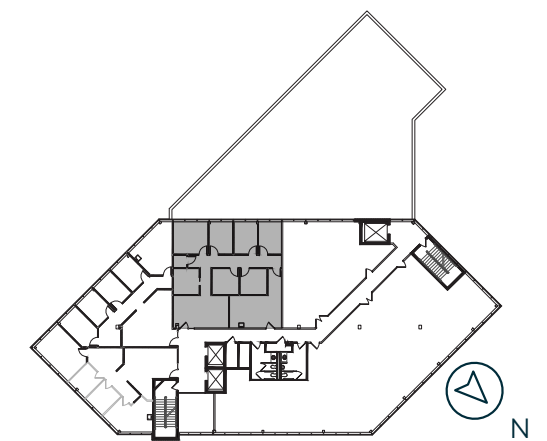
# Burnsville Medical Center

Suite 200A | 1,952 SF



## Layout Featuring:

- 5 Exam Rooms
- Private Office
- Storage
- Nurse's Room
- Staff's Room
- Waiting Room



KEY PLAN - 2ND FLOOR

**Trinette Wacker**

612-372-1230  
trinette.wacker@transwestern.com

**Frank Richie**

612-359-1674  
frank.richie@transwestern.com

**Max Stewart**

612-268-5314  
max.stewart@transwestern.com

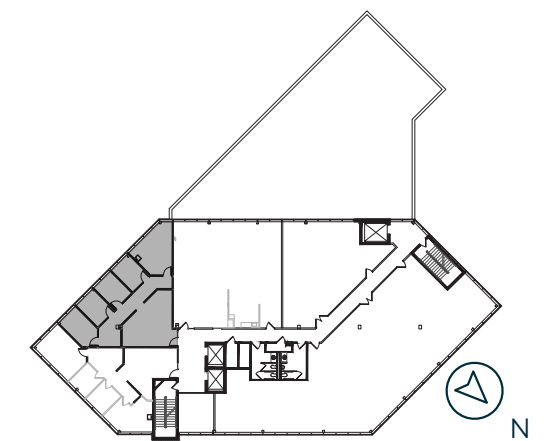
# Burnsville Medical Center

Suite 200B | 1,534 SF



## Layout Featuring:

- 3 Exam Rooms
- Private Office
- Nurse's Room
- Staff's Room
- Waiting Room



KEY PLAN - 2ND FLOOR

**Trinette Wacker**

612-372-1230  
trinette.wacker@transwestern.com

**Frank Richie**

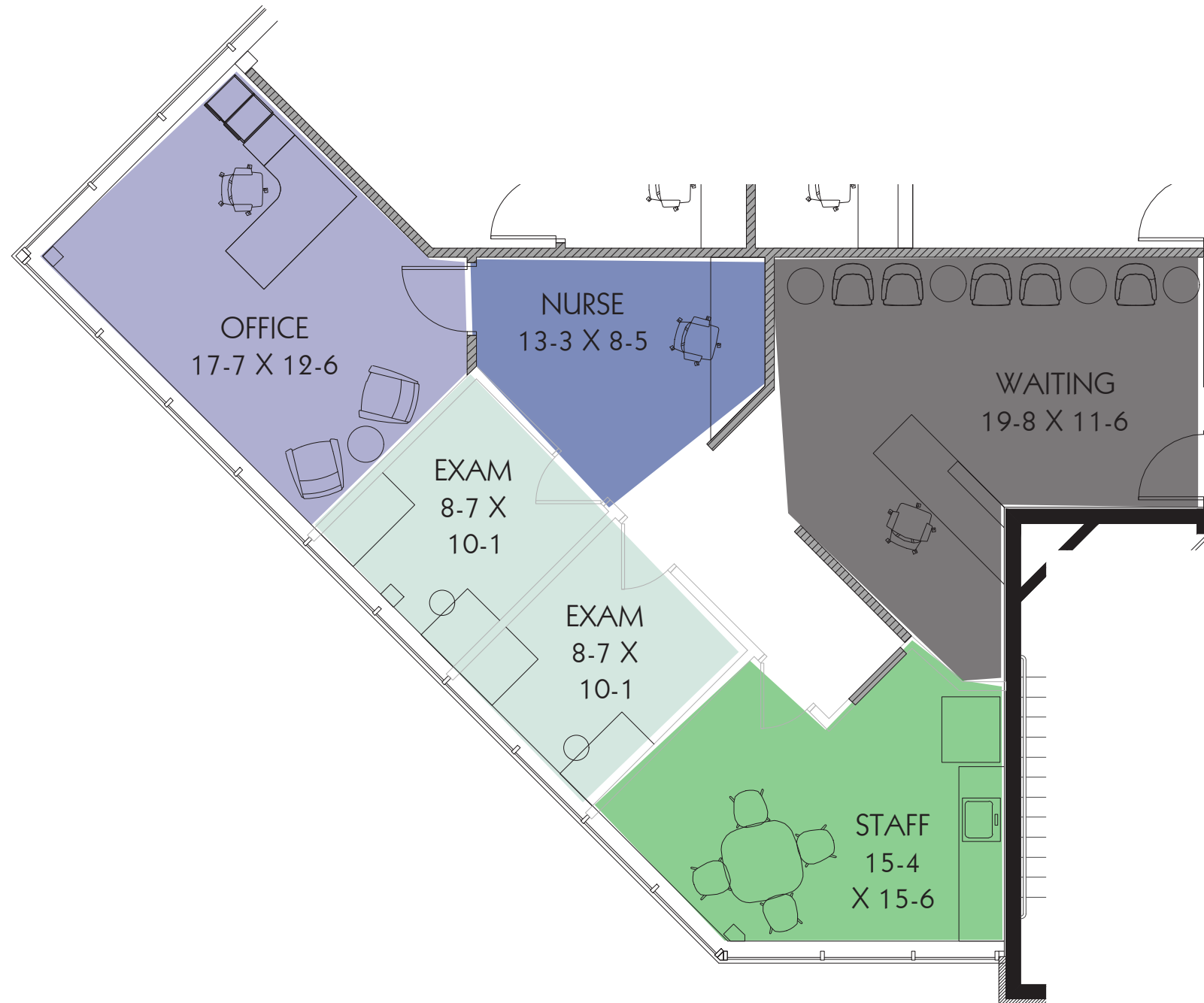
612-359-1674  
frank.richie@transwestern.com

**Max Stewart**

612-268-5314  
max.stewart@transwestern.com

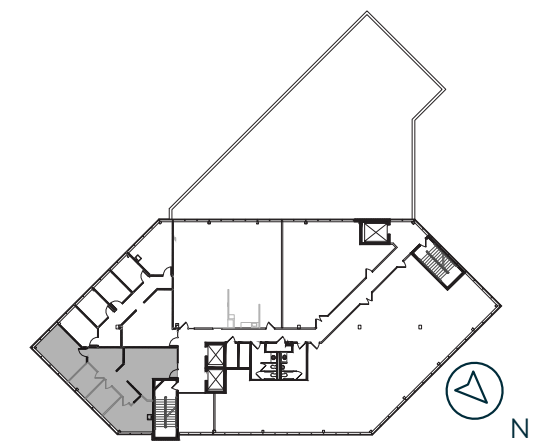
# Burnsville Medical Center

Suite 200C | 1,359 SF



### Layout Featuring:

- 2 Exam Rooms
- Private Office
- Nurse's Room
- Staff's Room
- Waiting Room



**Trinette Wacker**

612-372-1230  
trinette.wacker@transwestern.com

**Frank Richie**

612-359-1674  
frank.richie@transwestern.com

**Max Stewart**

612-268-5314  
max.stewart@transwestern.com