

The Rotunda Building

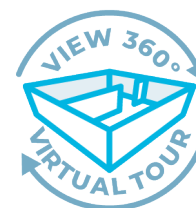
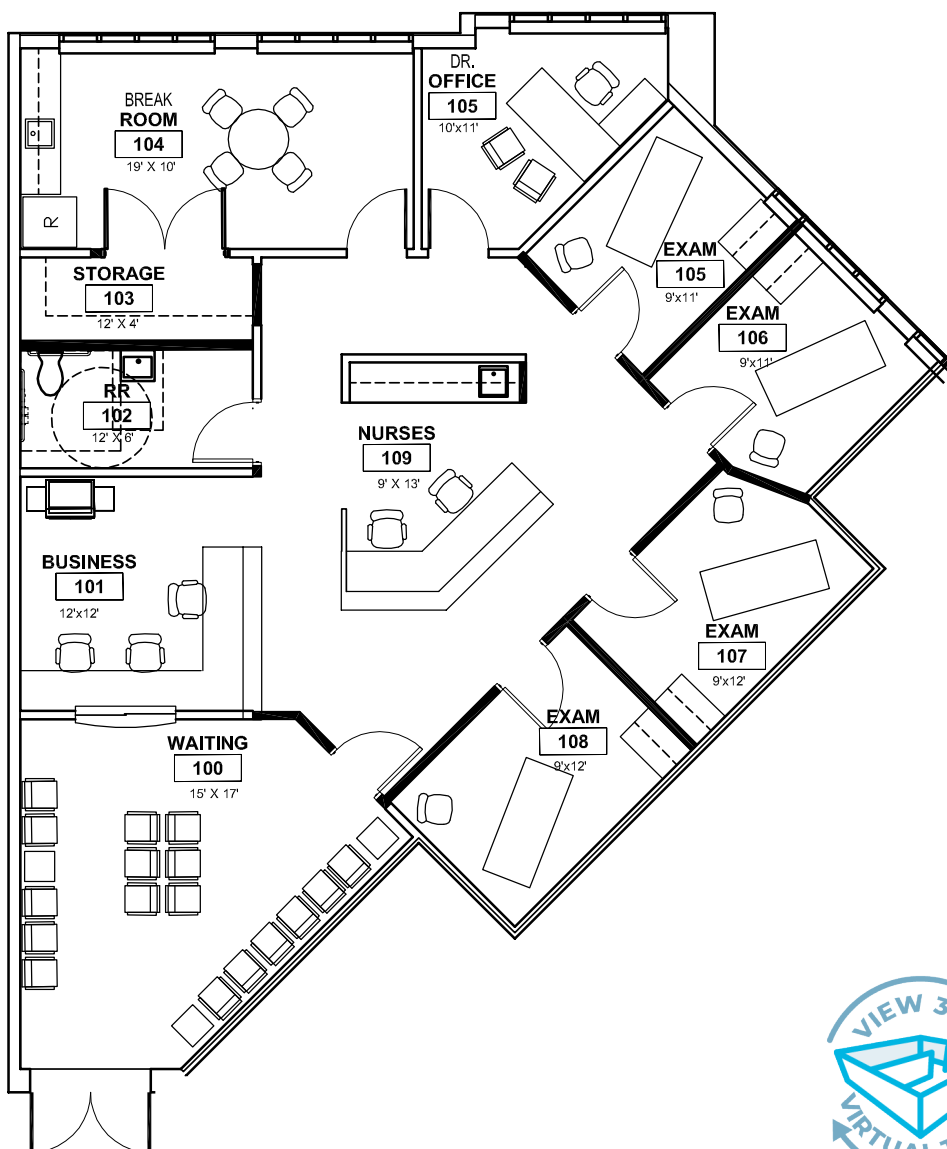
5819 Highway 6 | Sugar Land, TX 77459



TRANSWESTERN

REAL ESTATE
SERVICES

First Floor
Suite 180 - 2,143 SF



Leasing Information:

Christian Connell

713.231.1588

Christian.Connell@transwestern.com

Chris Boyd

713.272.1268

Chris.Boyd@transwestern.com

The information provided herein was obtained from sources believed reliable; however, Transwestern makes no guarantees, warranties or representations as to the completeness of accuracy thereof. The presentation of this property is submitted subject to errors, omissions, change of price or conditions, prior to sale or lease, or withdrawal without notice. Copyright © 2024 Transwestern.