

SUITE 1610

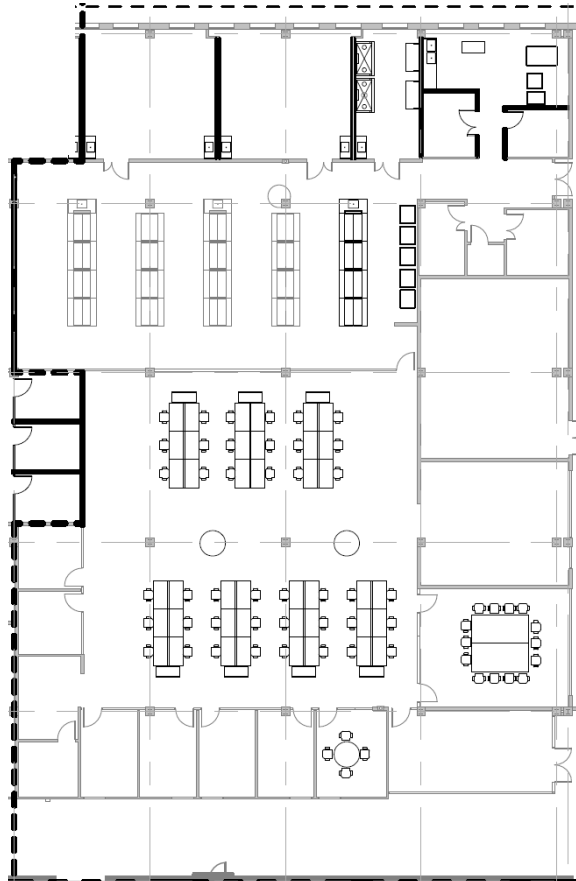
14,526 RSF

TMC | INNOVATION FACTORY



SPACE FEATURES

- **# of Offices:** 6
- **# of Vent Hoods:** 2 Fume Hoods
- **# of Open Workstations:** TBD
- **# of Biosafety Cabinets:** 1 deducted 1 recirculating



LEASING INFORMATION:



Lisa Bovermann
Senior Vice President
(832) 443-1282
Lisa.Bovermann@transwestern.com

Kaitlyn Harp
Associate
(409) 673-1022
Kaitlyn.Harp@transwestern.com

TMC REAL ESTATE LEASING

2450 Holcombe Blvd, Suite 1700
Houston, TX 77006
Leasing@tmc.edu

* Virtual Tour reflects Suite 1600 & 1610 combined. Ready Q1 2026