

MEDICAL OFFICE SPACE FOR LEASE

# MAINLAND MEDICAL PLAZA

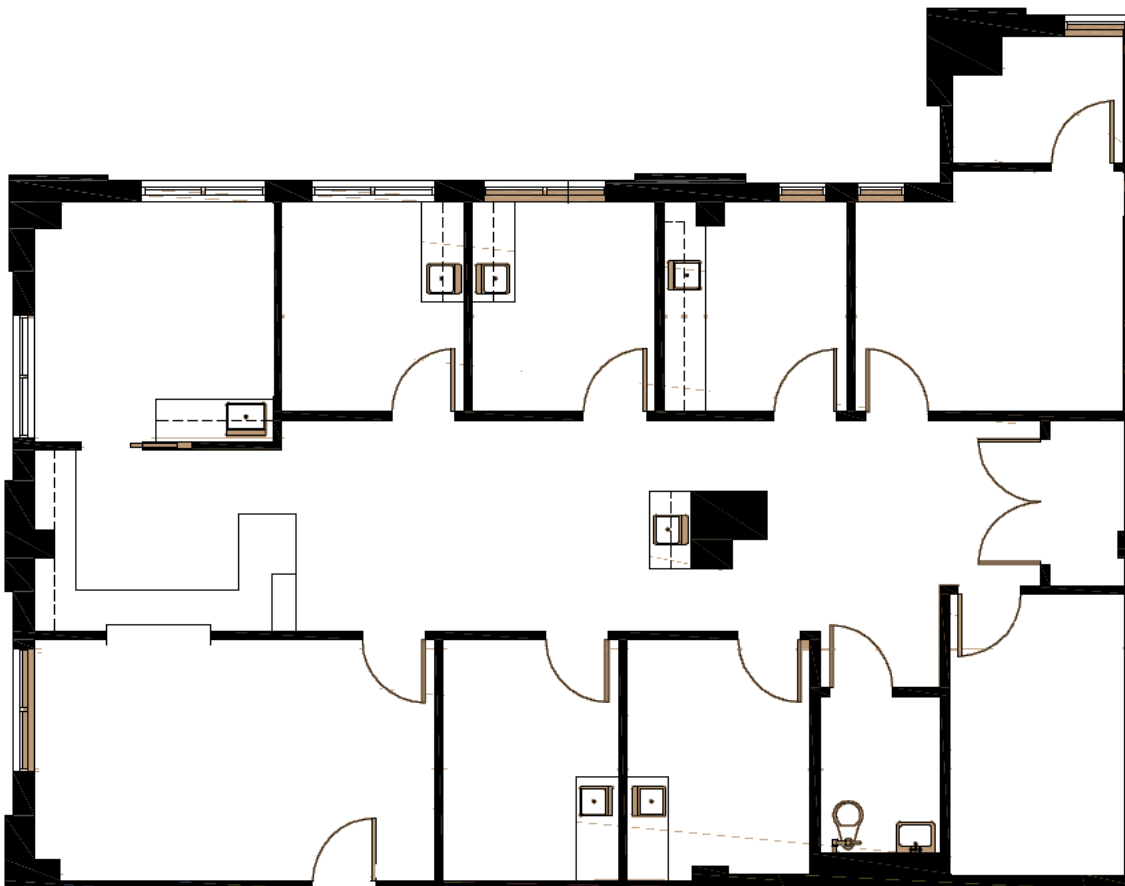
6807 EMMETT F. LOWRY EXPWY | TEXAS CITY, TEXAS 77591

1900 West Loop S  
Suite 1300  
Houston, TX 77027

T 713.270.7700  
F 713.270.6285  
transwestern.com

## FLOOR PLAN

SUITE 300: 1,990 SF



### CONTACT

**ASHLEY CASSEL, SVP**

713.490.3785

ashley.cassel@transwestern.com

**DANIELLE LANZA, ASSOCIATE**

713.231.1605

danielle.lanza@transwestern.com

The information provided herein was obtained from sources believed reliable; however, Transwestern makes no guarantees, warranties or representations as to the completeness or accuracy thereof. The presentation of this property is submitted subject to errors, omissions, change of price or conditions, prior sale or lease, or withdrawal without notice. Copyright © 2018 Transwestern.