

KINGWOOD MEDICAL ARTS

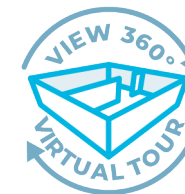
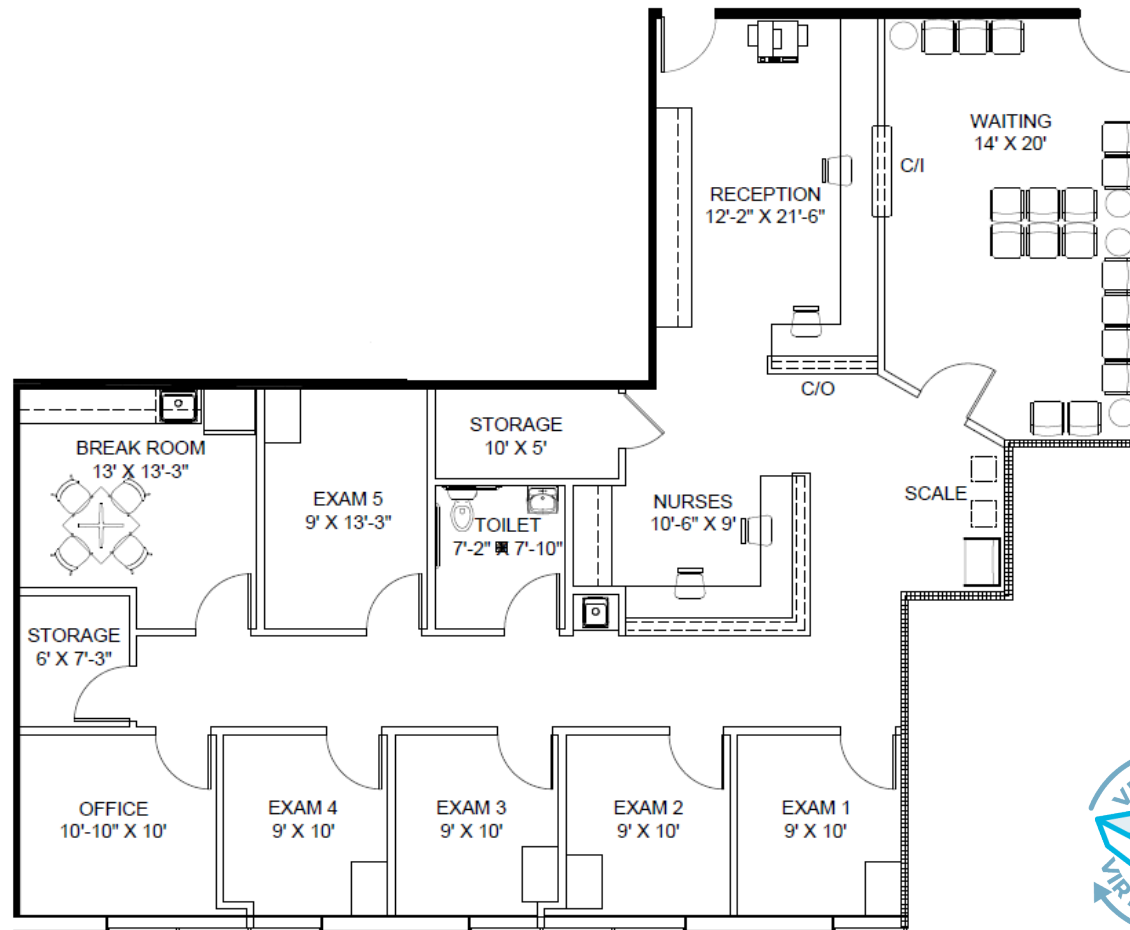
350 KINGWOOD MEDICAL DRIVE | KINGWOOD, TX 77339

Floor Plan | Suite 240 | 2,499 SF



TRANSWESTERN

REAL ESTATE
SERVICES



Leasing Information:

Sarah Carter | VP

713.231.1629

Sarah.Carter@transwestern.com

The information provided herein was obtained from sources believed reliable; however, Transwestern makes no guarantees, warranties or representations as to the completeness of accuracy thereof. The presentation of this property is submitted subject to errors, omissions, change of price or conditions, prior to sale or lease, or withdrawal without notice. Copyright © 2020 Transwestern.

