

CONROE 500

500 Medical Center Blvd - Conroe, TX 77304

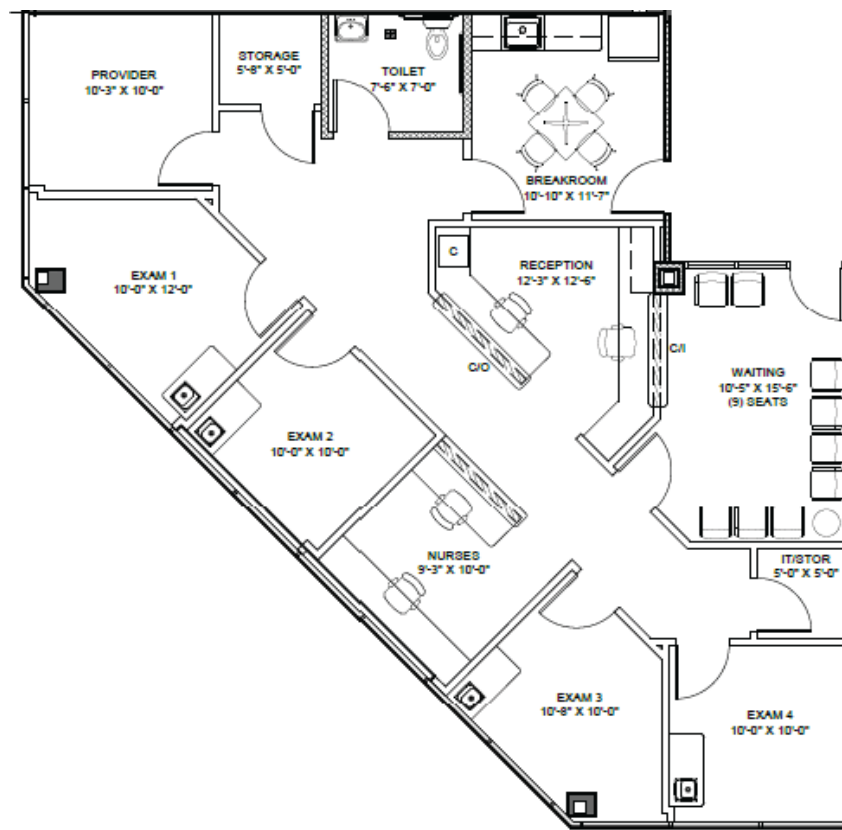
August Completion

Floor Plan | Spec Suite 355 | 1,807 SF



TRANSWESTERN

REAL ESTATE
SERVICES



Leasing Information:

Sarah Carter | VP

713.231.1629

Sarah.Carter@transwestern.com

Elise Jaco | Associate

713.231.1580

Elise.Jaco@transwestern.com

The information provided herein was obtained from sources believed reliable; however, Transwestern makes no guarantees, warranties or representations as to the completeness or accuracy thereof. The presentation of this property is submitted subject to errors, omissions, change of price or conditions, prior sale or lease, or withdrawal without notice. Copyright © 2023 Transwestern.

CONROE 500

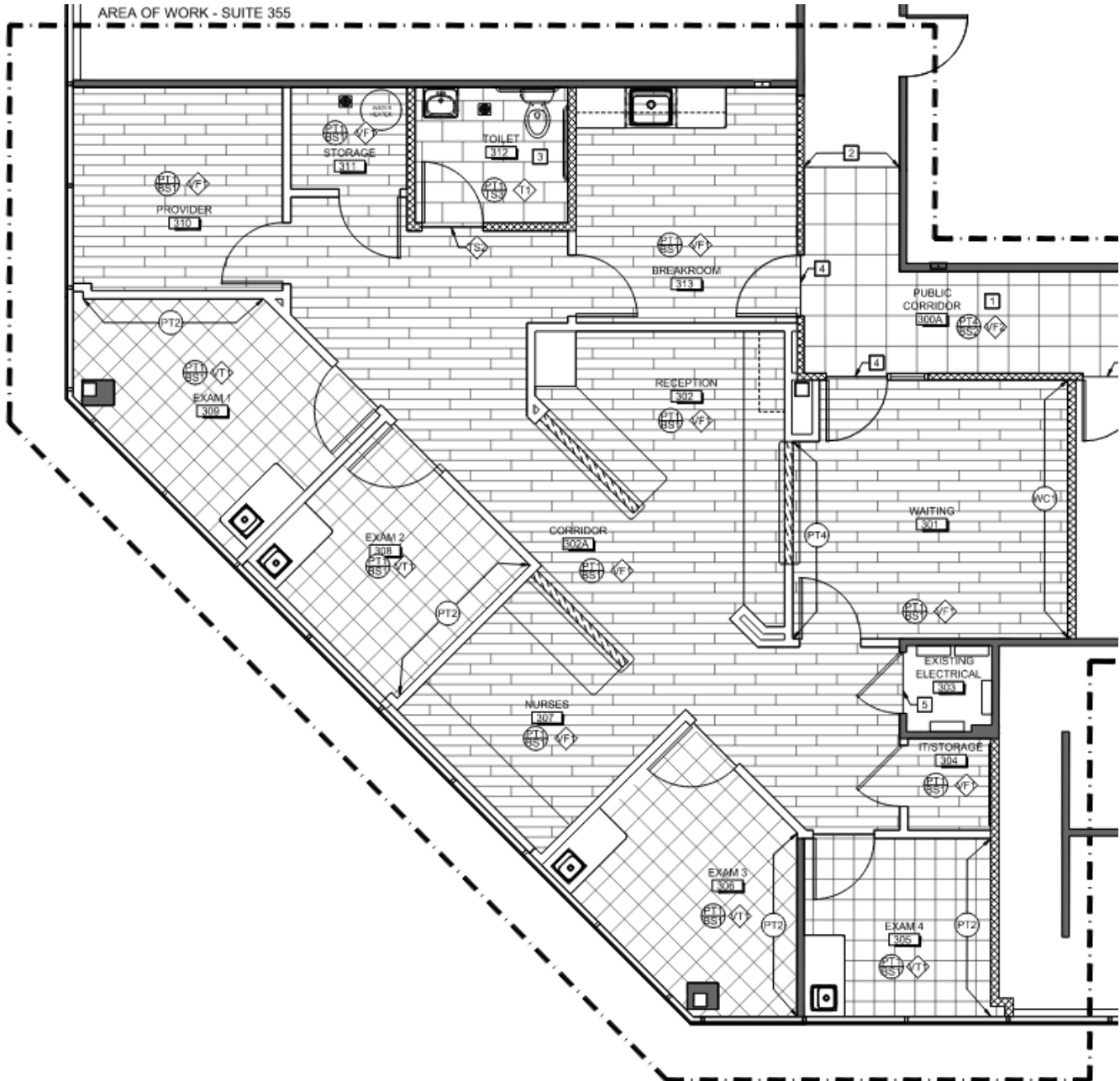
500 Medical Center Blvd - Conroe, TX 77304

Floor Plan | Spec Suite 355 | 1,807 SF



TRANSWESTERN

REAL ESTATE
SERVICES



Leasing Information:

Sarah Carter | VP

713.231.1629

Sarah.Carter@transwestern.com

Elise Jaco | Associate

713.231.1580

Elise.Jaco@transwestern.com

The information provided herein was obtained from sources believed reliable; however, Transwestern makes no guarantees, warranties or representations as to the completeness or accuracy thereof. The presentation of this property is submitted subject to errors, omissions, change of price or conditions, prior sale or lease, or withdrawal without notice. Copyright © 2023 Transwestern.

CONROE 500

500 Medical Center Blvd - Conroe, TX 77304



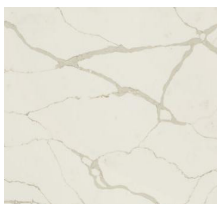
TRANSWESTERN

REAL ESTATE
SERVICES

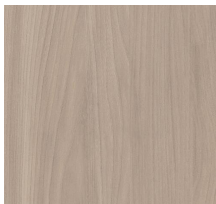
Floor Plan | Spec Suite 355 Rendering



VF1: MOHAWK GROUP
PREMIUM WOOD | C0194
939 BAY LEAF



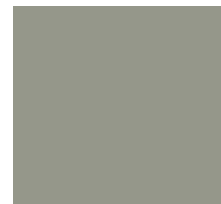
SS1: CORIAN | TRANS.
TOPS CALACATTA NATU-



PL5: FORMICA | INTERIOR
DOORS/PANELS/BASE CAB-
INETS 5793NG BUFF ELM



WC1: MOMENTUM
TOWER SHADES OF



PT4: SHERWIN WILLIAMS
SW 9130 EVERGREEN
FOG (ACCENT PAINT)



PL4: WILSONART | UPPERS
(PLASTIC LAMINATE)



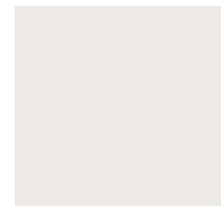
PL3: WILSONART | CAB-
INETS 8231K79 VALLEY



PL2: WILSONART | COUNTER-
TOPS 494338 CLASSIC LINEN



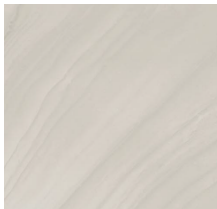
VT1: ARMSTRONG
51810 WASHED
LINEN



PT1: SHERWIN WIL-
LIAMS SW 7004



T2: DALTILE | ANNAPOLIS
REMIX AP06 SAIL | BEVEL



TT1: HORIZONTAL ITALIAN
TILE WAVES | MALIBU



BS1: ROPPE 129
DOLPHIN (RUB-



PT2: SHERWIN WIL-
LIAMS SW 6072 VER-

Leasing Information:

Sarah Carter | VP

713.231.1629

Sarah.Carter@transwestern.com

Elise Jaco | Associate

713.231.1580

Elise.Jaco@transwestern.com

The information provided herein was obtained from sources believed reliable; however, Transwestern makes no guarantees, warranties or representations as to the completeness or accuracy thereof. The presentation of this property is submitted subject to errors, omissions, change of price or conditions, prior sale or lease, or withdrawal without notice. Copyright © 2023 Transwestern.