

OFFICE
LEASE

129,562 SF

CLASS A
OFFICE SPACE



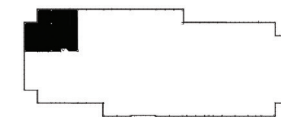
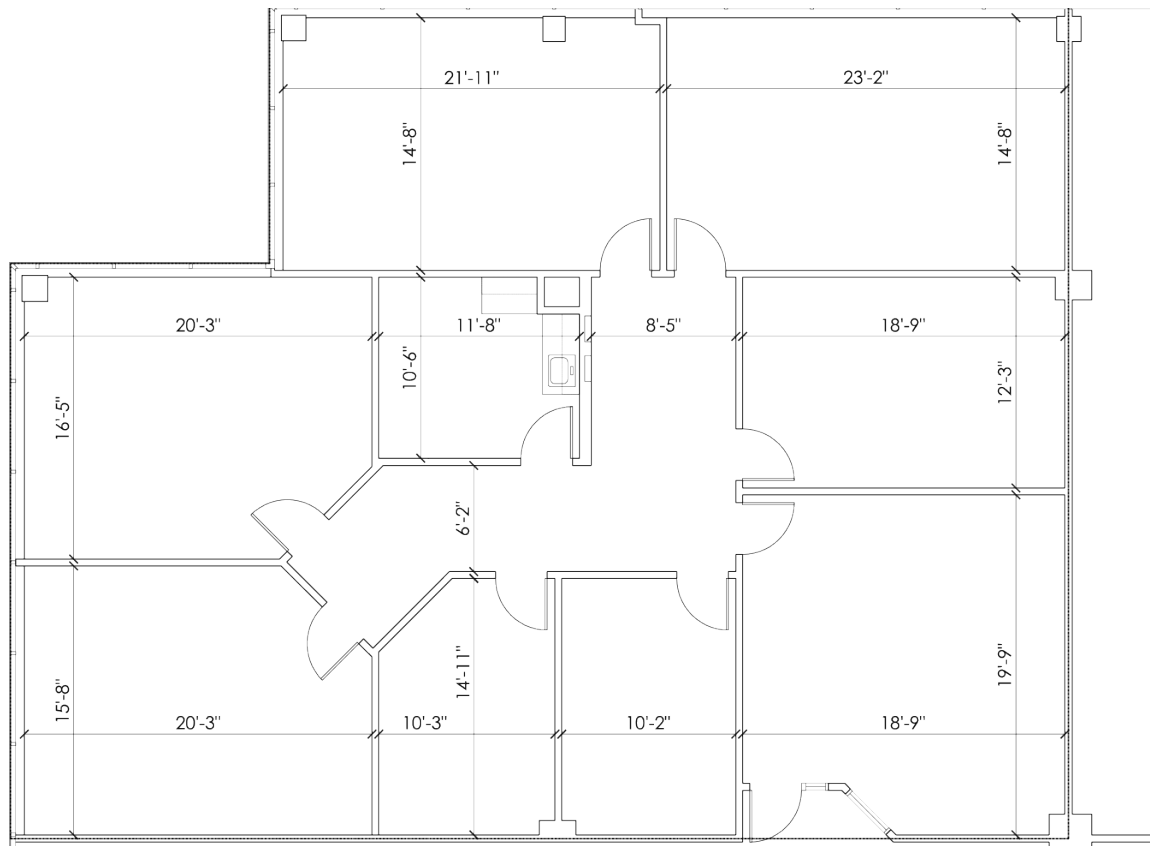

TRANSWESTERN
REAL ESTATE
SERVICES

TIMBERLANDS IV

1450 W LONG LAKE RD | TROY, MI 48098

FLOOR PLAN

SUITE 375 | 3,175 RSF



Leasing Information:

**Bill
Harvey**
248.797.9455
bill.harvey@transwestern.com

**Chuck
Howard**
248.821.7722
charles.howard@transwestern.com

The information provided herein was obtained from sources believed reliable; however, Transwestern makes no guarantees, warranties or representations as to the completeness of accuracy thereof. The presentation of this property is submitted subject to errors, omissions, change of price or conditions, prior to sale or lease, or withdrawal without notice. Copyright © 2020 Transwestern.