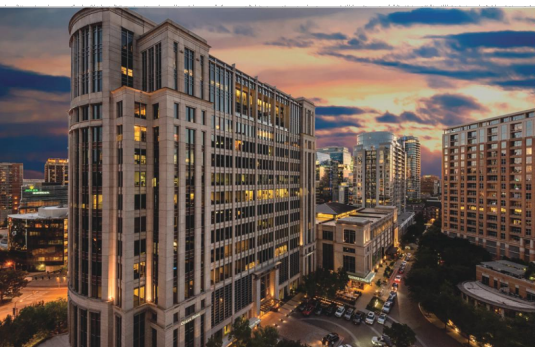
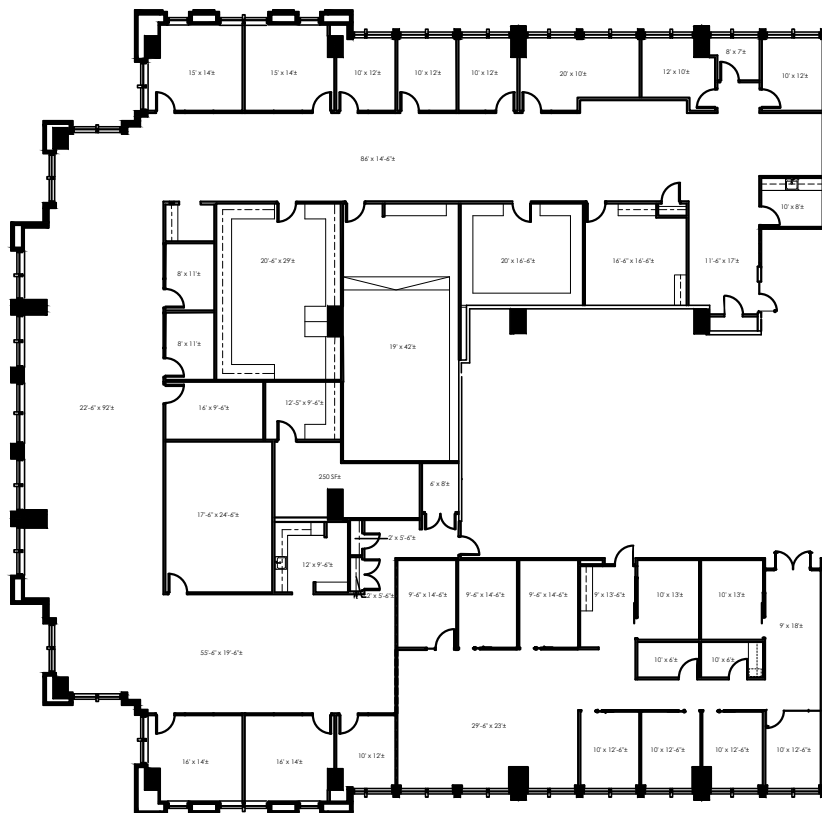
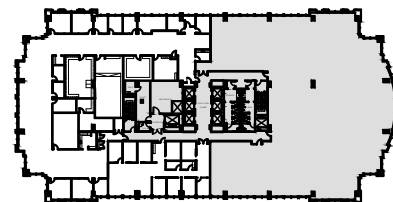




# ROSEWOOD | COURT

Suite 1030-1050  
15,749 RSF

KEY PLAN



For leasing information contact:

Kim Brooks  
(972) 361-1122  
kim.brooks@transwestern.com

Scott Walker  
(972) 774-2504  
scott.walker@transwestern.com

Laney Delin  
(214) 237-5020  
laney.delin@transwestern.com