

ON STAGE



The official playbill and performing arts magazine of the Tennessee Performing Arts Center • TPAC.ORG
HCA/Tristar Health Broadway at TPAC Series • TPAC Presents

/// **Irving Berlin's White Christmas** | November 13-18, 2012

EXPERIENCE the **ARTS**

pages 8-9

About THE **SHOW**

starts on page 17

We **THANK**
our **DONORS**
pages 42-44

Irving Berlin's **WHITE CHRISTMAS** THE MUSICAL



Pictured from left to right:

Matthew Harrison
Vice President
Relationship
Manager

Jarrod Grubb
Vice President
Relationship
Manager

Renee Chevalier
Vice President
Relationship
Manager

Rita Mitchell
Senior Vice President
Private Client Services

Laura Folk
Senior Vice President
Medical Private
Banking

Mary Carlson
Vice President
Relationship
Manager



POWERING YOUR *today and tomorrow*

Personal Advantage Banking from First Tennessee. The most exclusive way we power the dreams of those with exclusive financial needs. After all, you've been vigilant in acquiring a certain level of wealth, and we're just as vigilant in finding sophisticated ways to help you achieve an even stronger financial future. While delivering personal, day-to-day service focused on intricate details, your Private Client Relationship Manager will also assemble a team of CERTIFIED FINANCIAL PLANNER™ professionals with objective advice, investment officers, and retirement specialists that meet your complex needs for the future.

**TO START EXPERIENCING THE
EXCLUSIVE SERVICE YOU'VE
EARNED, CALL 615-734-6165**





GIVING HEART FAILURE PATIENTS

A NEW LEASE ON LIFE

Shortly after having her baby, Jessica was diagnosed with heart failure. While she waited for a transplant, she needed a heart pump. Through the care of the cardiac specialists at Saint Thomas Heart, Jessica's heart was given new life by implanting a ventricular assist device (VAD) that helps the weakened heart pump blood throughout the body. Now, Jessica has a new lease on life.

With more than 25 practice offices located throughout the region, our physicians offer greater access to the high level of experienced care that Saint Thomas Heart is known for. Call 800-345-5016 to schedule an appointment with a Saint Thomas Heart cardiologist in your area.



Saint Thomas Heart

Baptist Hospital
Middle Tennessee Medical Center
Saint Thomas Hospital

800-345-5016
SaintThomasHeart.com
Nashville, TN



TIRES AREN'T THE ONLY THING WE'RE PASSIONATE ABOUT.

Comfortable.

Dignified.

Genuine.

Supportive.



REPRESENTATIONAL PHOTO

When we learned how sick Mom was, we didn't know what to do. We're so thankful that we asked her doctor about Alive Hospice. They came into our home like family, helping Mom stay with us where she wanted to be.



Scan here
to listen to a
patient's story.



www.alivehospice.org

WE PROVIDE LOVING CARE TO PEOPLE WITH LIFE-THREATENING ILLNESSES, SUPPORT TO THEIR FAMILIES, AND SERVICE TO THE COMMUNITY IN A SPIRIT OF ENRICHING LIVES.



Letter from the Publishers



Dear Readers,

At a time when hard copy print publications are rapidly disappearing in favor of the ipad, iphone, kindle or whatever the next device may be that replaces print...it's comforting to know that there are venues that exist where we still cherish the hard copy printed word. You know what we're talking about...that special time just before the curtain goes up at TPAC, Schermerhorn, The Franklin Theatre and the Martha Rivers Ingram Center for the Performing Arts at Vanderbilt. Clearly the performing arts venue setting is going to be the last bastion for print in America.

If you or your company is interested in advertising, please let us know. We offer a very unique advertising package that not only includes all seven *Playbill* publications listed below, but also our very popular newsstand annual guide, *Nashville Arts & Entertainment*. We are the only print publisher in Nashville that offers our advertisers newsstand exposure plus the finest venues where you have the confidence in knowing that your advertising message is actually being seen. No fast forwarding, no channel surfing, and no distractions before the curtain goes up...everyone is focused on their *Playbill*.

We are thankful for all our readers and advertisers...couldn't do it without you!

Enjoy the show!

Gary & Robin

gary@glovergroupinc.com
robin@glovergroupinc.com

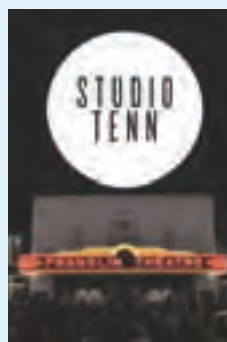
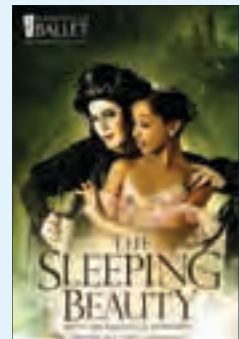
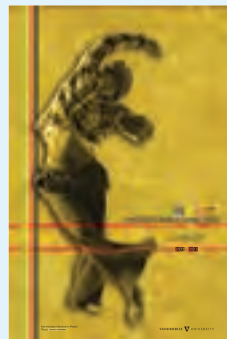
Follow us on Facebook and Twitter

www.GloverGroupEntertainment.com

www.NashvilleArtsAndEntertainment.com

NASHVILLE'S PERFORMING ARTS PUBLICATIONS

For Advertising Information, please call 615.373.5557



It's the VANDERBILT We need our blood pressure checked CLINIC.



High blood pressure is known as the silent killer. But now, it's easier than ever to get your blood pressure checked. The board-certified physicians of Vanderbilt have five convenient locations in Williamson County to serve all of your primary care needs, from sore throats and minor infections to physicals and preventive care. Best of all, we have more physicians available so that we can serve you as quickly as possible. To make an appointment, call 615-948-7000 or visit VanderbiltWilliamson.com.

PRIMARY CARE CLINICS



BRENTWOOD	BRENTWOOD	FRANKLIN	WESTHAVEN	SPRING HILL
343 Franklin Rd	782 Old Hickory Blvd	2105 Edward Curd Ln	1025 Westhaven Blvd	3098 Campbell Sta Pkwy

The all-new
BMW 3 Series

bmwofnashville.com
615-850-4040



The Ultimate
Driving Machine®



ALL NEW. EXCEPT FOR THE THRILL.

With a fuel-efficient, TwinPower Turbo 240-hp, 4-cylinder engine, the all-new 3 Series propels you from 0 to 60 in 5.9 seconds while still giving you 33 mpg highway.* Meanwhile, the Head-Up Display and the ConnectedDrive infotainment system bring the outside world within arm's reach. A rebirth has never felt more familiar.

We only make one thing. The Ultimate Driving Machine.® bmwofnashville.com

ANNOUNCING THE NEW BMW 3 SERIES.

BMW EfficientDynamics
Less emissions. More driving pleasure.



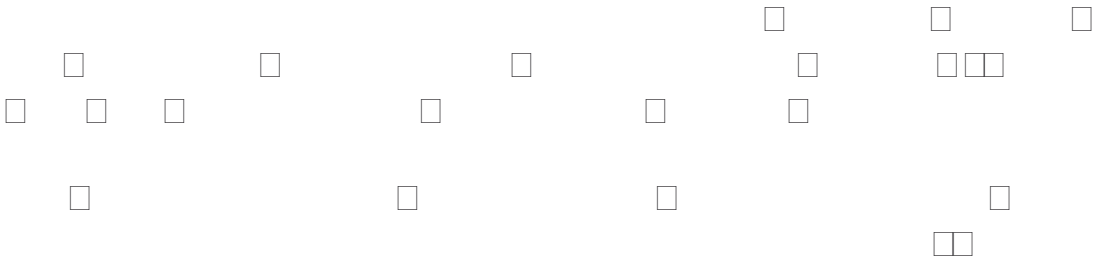
BMW of Nashville | 4040 Armory Oaks Drive | Nashville, TN 37204 | 615-850-4040

*Acceleration claim based on BMW AG test results. Figures based on 23 mpg city/33 mpg hwy for 328i Automatic Transmission. May change as a result of EPA testing.

†Whichever comes first. For full details on BMW Ultimate Service® visit bmwusa.com/ultimateservice.

©2012 BMW of North America, LLC. The BMW name, model names and logo are registered trademarks.







Welcome to the TENNESSEE PERFORMING ARTS CENTER

by **Kathleen W. O'Brien**
TPAC President and Chief Executive Officer

What do a starship captain, the bad boy of foodie television, Green Day, an '80s jukebox musical, and wild animals have in common? They are each one-of-a-kind, offering you a unique experience in live entertainment that only can happen at your Tennessee Performing Arts Center. Read on!

We're proud of the variety and popularity of the titles in our 2012-13 HCA/TriStar Health Broadway at TPAC series (see pages 36-37 for the full listing). We know you'll enjoy the mix of classic, contemporary, and familiar stories from favorite films. We strive to offer a satisfying blend of Broadway every year, giving you the chance to experience the shows playing in New York and other cities nationwide.

With that same mission in mind, TPAC also presents a variety of special engagements.

This season, you can see celebrity chef Anthony Bourdain and the legendary actor William Shatner. Our Broadway specials offer something unique as well: *American Idiot*, developed from the Green Day album, and *Rock of Ages*, a hot ticket on Broadway, adapted for a new movie rockin' with the hits of the 1980s. Then, there's Mutual of Omaha's *Wild Kingdom* with Peter Gros – educational fun for family audiences and just one of the incredible array of performances in TPAC Education's Season for Young People.

So, come on into the kitchen! Travel the galaxy and get into great music. While you're petting a giant snake, keep an eye out for tropical birds that might just roost on your head.

Make plans to make more lasting memories with the exciting and unique entertainment at the Tennessee Performing Arts Center. See you soon at TPAC!

Kathleen W. O'Brien



TPAC Tweets, Friends, and Blogs

TPAC does its very best to stay on the cutting edge of new technologies, actively engaged with **Facebook** and **Twitter**, in addition to keeping our web site up to date. We also send weekly e-mails to our **Stagelinks** list with breaking news and special offers. The newest addition to our electronic suite is the blog TPAC Spotlight. Have some fun with us at ► tpac.org/spotlight. You'll enjoy fun facts and lighthearted commentary as you get to know TPAC staff. From Facebook to our blog, we'd love to hear from you!

EXPERIENCE the **ARTS!**



Disney Musicals In Schools and More

Last year, TPAC Education and Nashville were selected as the first arts center and city to test **Disney Musicals in Schools** outside of New York City. That initiative was so successful it will continue here AND expand to other school districts nationwide.

Why did Disney select TPAC for this singular honor? Why was the first DMIS pilot project a triumph in Metro Nashville Schools? Because TPAC Education and Metro Schools had a wealth of experience over three decades with high-quality, curriculum-based arts learning in both this building and local classrooms. One of the most comprehensive programs of its kind in the nation, TPAC Education has served more than 1.5 million children statewide, from pre-school through high school, also offering an adult series that consistently fills to standing room only. Get involved! Explore the wonderful world of arts education for yourself and your schools at ► tpac.org/education.

YOU Can Make a Difference

TPAC is able to offer meaningful and personal encounters with works of the performing and visual arts because of the generous financial support of our community. As a non-profit organization, TPAC relies on donor support to provide arts learning experiences for our children and professional development in aesthetic education for their teachers. To learn more about supporting TPAC Education, visit ► tpac.org/donate or contact Charles Stewart, Vice President for Institutional Advancement, at 615-687-4283 or cstewart@tpac.org.



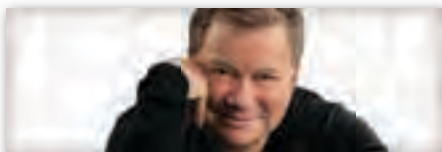
Anthony Bourdain
November 3



Irving Berlin's White Christmas {BROADWAY}
November 13-18



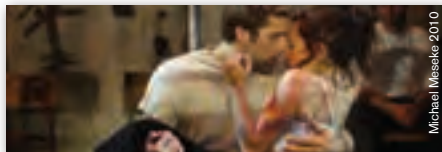
Mutual of Omaha's Wild Kingdom with Peter Gros
December 7



Shatner's World: We Just Live In It
January 12



Catch Me If You Can {BROADWAY}
January 22-27



Traces {BROADWAY}
February 19-24

Pick up a *Center Stage* in the lobby or visit tpac.org for more information on these and other exciting entertainment options on the way to TPAC.



STEINWAY PIANO GALLERY
NASHVILLE

ENJOY NIGHTS LIKE TONIGHT IN THE COMFORT OF YOUR LIVING ROOM



**WE CAN MAKE YOUR IPHONE, IPAD,
SMARTPHONE, OR TABLET PLAY YOUR
PIANO OR ONE OF OURS.**



**TO LEARN MORE ABOUT THE TECHNOLOGY
OF THE "SMART" PLAYER SYSTEM COME INTO THE STORE
OR VISIT WWW.STEINWAYNASHVILLE.COM/PLAYER**

**4285 SIDCO DR. • NASHVILLE, TN 37204
(615) 373-5901 • WWW.STEINWAYNASHVILLE.COM
FACEBOOK.COM/STEINWAYNASH | TWITTER.COM/STEINWAYNASH**



SHOP MORE

Win a \$500 shopping spree
at great stores like
**Apple, Pottery Barn,
James Avery, Ann Taylor,
J.Crew, Williams-Sonoma,
White House | Black Market,
and Pandora!**

Stop by Guest Services to register
or scan the QR code below
for your chance to win.



COOLSPRINGS
GALLERIA



I-65, Exits 68 & 69 Franklin
615.771.2128
CoolSpringsGalleria.com



CBL

Get back to what
matters most.



4321 CAROTHERS PARKWAY • FRANKLIN
williamsonmedicalcenter.org





It takes the skill of
an artist to restore
this masterpiece.

To the neurosurgeons at Saint Thomas Health, brain surgery is the highest form of art. The Truebeam STX radiosurgery program at Saint Thomas Hospital provides them the tools they need to apply therapeutic radiation with unparalleled pinpoint accuracy. That means renewed hope and improved quality of life to cancer patients.



**Neurosciences
Institute**

Saint Thomas Health

615-284-LIFE · STHS.com



Sign up for Green Power Switch[®] and save as much CO₂ as 1.5 hybrids.

Did you know you can sign up for Green Power Switch for as little as \$4 a month? And believe it or not, over the course of a year, that \$4 a month worth of green power keeps more carbon dioxide out of the atmosphere than 1.5 hybrid vehicles.* So get more green “bang” for your buck. Visit greenpowerswitch.com and sign up today.



Green Power Switch[®]
A TVA Renewable Energy Initiative



*Compares yearly CO₂ emissions avoided by driving a hybrid vehicle vs. a comparable non-hybrid to purchasing twelve 150 kWh blocks of green power. (EPA Green Power Equivalency Calculator)

Nashville's Encore Dining



1808 Grille

1808 Grille offers a full bar, a celebrated wine list, and award-winning New American cuisine, blending traditional dishes and global flavors, with an emphasis on local, seasonal produce and the finest ingredients.

Ph: (615) 3400012 w www.1808grille.com



Fleming's

Fleming's Nashville is an ongoing celebration of exceptional food & wine, featuring the finest prime steak and an award-winning wine list. We are located across from Centennial Park at 2525 West End Ave.

Ph: (615) 3420131 w www.flemingssteakhouse.com/locations/tn/nashville



The Melting Pot

Where fun is cooked up fondue style. A four course experience in a casual elegant atmosphere. 166 Second Avenue North. Reservations at meltingpot.com.

Open 7 days for dinner.

Ph: (615) 7420970. www.meltingpot.com/nashville/welcome



Nero's Grill

Green Hills' favorite neighborhood restaurant! Serving crisp salads, comfort foods, fresh seafood and aged, wood grilled steaks. 2122 Hillsboro Drive.

Ph: (615) 2970777 f or reservations. www.nerosgrill.com



Prime 108

Described as "Dining to Die For" by Southern Living Magazine, Prime 108 offers the finest steaks, fresh seafood and an extensive wine list inside the beautifully renovated Union Station Hotel, 1001 Broadway.

Ph: (615) 6208665 f or reservations www.unionstationhotelnashville.com



Rodizio Grill

Rodizio Grill serves a continuous rotation of 14 rotisserie grilled meats carved tableside by Brazilian Gauchos. Authentic Brazilian appetizers, unlimited gourmet salad area, decadent desserts!

Everything at Rodizio Grill is homemade... It's the Brazilian Way!

Coming Late 2012 to Historic Second Ave. www.rodiziogrill.com



Sheraton Nashville Downtown

Sheraton is the place where friends gather. Make Sheraton a memorable part of your next cultural experience with dinner in Speakers Bistro before the show, or dessert and cocktails in Sessions Lounge after the curtain falls.

Ph: (615) 2590000 f or reservations www.sheratonnashvilledowntown.com



Sole Mio

For almost twenty years, Sole Mio has been serving up Nashville's best award winning Italian cuisine. Featuring handmade pasta and traditional Northern Italian Sauces made fresh to order. Check us out! 311 3rd Avenue South, Nashville 37201.

Ph: (615) 2560013 w www.solemionash.com

IN THE CITY THAT ATTRACTS MILLIONS, COULD A CAR BE AS MAGNETIC?

We began with a simple, but powerful idea. Design and build a vehicle with such style, luxury, and capability that it would exude an unprecedented presence.

When we finished, we put that presence to the test. In the world's busiest, brightest, fastest environments. We simply parked the all-new Range Rover Evoque and let cameras roll. To see more visit LandRoverUSA.com



© 2011 Jaguar Land Rover North America, LLC

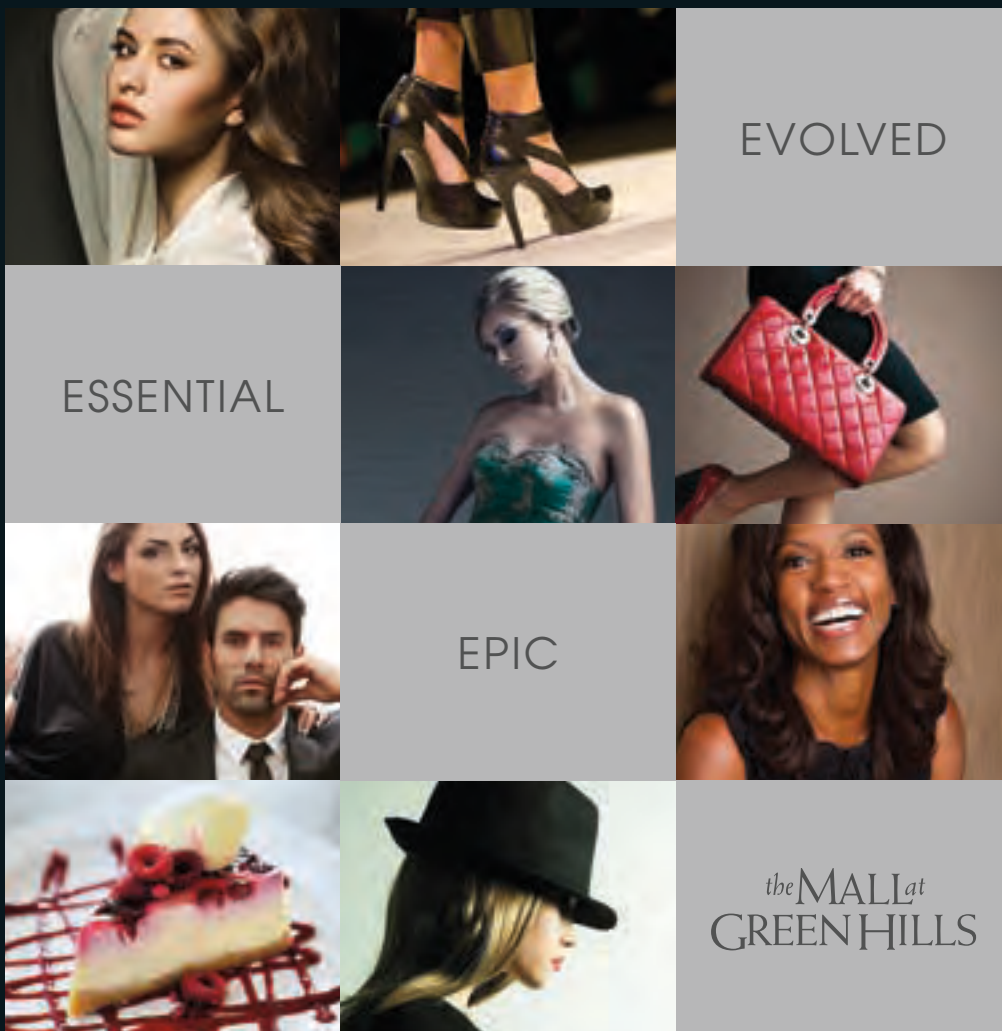
THE ALL-NEW **RANGE ROVER EVOQUE** The power of presence

3 Cadillac Drive | Brentwood, TN 37027 www.LandRoverNashville.com

**RANGE
ROVER**



LAND ROVER NASHVILLE



APPLE • BURBERRY • THE CHEESECAKE FACTORY
 THE CONTAINER STORE • DAVID YURMAN • EILEEN FISHER
 JIMMY CHOO • KATE SPADE NEW YORK • LOUIS VUITTON
 MICHAEL KORS • OMEGA • RESTORATION HARDWARE
 TIFFANY & CO.

the MALL at GREEN HILLS

NORDSTROM • DILLARD'S • MACY'S

OVER 100 SPECIALTY SHOPS & RESTAURANTS
 HILLSBORO PIKE, I-440 EXIT 3 • NASHVILLE, TN • SHOPGREENHILLS.COM

THESEUS PRODUCTIONS, LLC and THEATER OF THE STARS, INC
Present

Irving Berlin's **WHITE CHRISTMAS**
THE MUSICAL

Based upon the Paramount Pictures film written for the screen by
Norman Krasna, Norman Panama & Melvin Frank

Music and Lyrics by **IRVING BERLIN**
Book by **DAVID IVES** and **PAUL BLAKE**

Starring:

James Clow	Stefanie Morse	David Elder	Mara Davi
Cliff Bemis	Shannon Harrington	Tony Lawson	Andie Mechanic
	Ruth Williamson	Joseph Costa	Kilty Reidy

with

Andrew Black, Abby Church, Darien Crago, Brandon Davidson, Lucas Fedele, Alexa Glover, Andrew Hodge,
Drew Humphrey, Bryan Thomas Hunt, Megan Kelley, Kathryn Kendall, Lea Kohl, Kristyn Pope, Christopher Rice,
Natasha Scarse, Krista Severeid, Kelly Sheehan, Kristen J. Smith

*Scenic Design
and Adaptation*
Kenneth Foy

*Set Design
for Broadway*
Anna Louizos

*Costume
Design*
Carrie Robbins

*Lighting
Design*
Ken Billington

*Sound
Design*
Peter Fitzgerald

Casting
Jay Binder, CSA /
Jason Styres

Orchestrations
Larry Blank

Vocal & Dance Arrangements
Bruce Pomahac

General Manager
Brian D. Frey

Production Stage Manager
John W. Calder, III

Company Manager
Amy A. White

Prod. Technical Supervisor
John Edkins

Exclusive Tour Direction
The Booking Group
Meredith Blair

Marketing
Allied Live
Laura Matalon

Merchandise
Creative Goods NYC
Pete Milano

Musical Director
Michael Horsley

Choreographer
Randy Skinner

Director
Norb Joerder

IRVING BERLIN'S WHITE CHRISTMAS was originally produced by the MUNY in St. Louis in 2000
and subsequently by Kevin McCollum, Paul Blake, The Producing Office, Dan Markley and Sonny Everett
in association with Paramount Pictures at the Curran Theatre in San Francisco 2004

IRVING BERLIN'S WHITE CHRISTMAS is Produced by Arrangement with R&H Theatricals, an Imagem Company

Cast

Bob Wallace.....	James Clow
Phil Davis.....	David Elder
Ralph Sheldrake.....	Tony Lawson
General Henry Waverly.....	Joseph Costa
Ed Sullivan Announcer.....	Kilty Reidy
Rita.....	Abby Church
Rhoda.....	Kelly Sheehan
Tessie.....	Krista Severeid
Betty Haynes.....	Stefanie Morse
Judy Haynes.....	Mara Davi
Jimmy.....	Brandon Davidson
Quintet.....	Cliff Bemis, Brandon Davidson, Kathryn Kendall, Kilty Reidy & Krista Severeid
Mr. Snoring Man.....	Cliff Bemis
Mrs. Snoring Man.....	Kathryn Kendall
Train Conductor.....	Drew Humphrey
Martha Watson.....	Ruth Williamson
Susan Waverly.....	Shannon Harrington & Andie Mechanic
Ezekiel Foster.....	Cliff Bemis
Mike Nulty (Stage Manager).....	Kilty Reidy
Sheldrake's Secretary.....	Kathryn Kendall
Regency Room Announcer.....	Kilty Reidy
Regency Room Dancers.....	Brandon Davidson, Drew Humphrey & Bryan Thomas Hunt
"Let Me Sing and I'm Happy" Specialty.....	Lucas Fedele, Andrew Hodge, Drew Humphrey & Christopher Rice

Ensemble

Andrew Black, Abby Church, Darien Crago, Brandon Davidson, Lucas Fedele, Alexa Glover, Andrew Hodge,
Drew Humphrey, Bryan Thomas Hunt, Megan Kelley, Kathryn Kendall, Lea Kohl, Kristyn Pope,
Christopher Rice, Natasha Searse, Krista Severeid, Kelly Sheehan, Kristen J. Smith

Swings/Dance Captain

Swings.....	Andrew Black & Lea Kohl
Dance Captain.....	Andrew Black
Assistant Dance Captain.....	Lea Kohl

Understudies

<i>For Bob:</i> Tony Lawson	<i>For Rita:</i> Kristen J. Smith
<i>For Phil:</i> Drew Humphrey	<i>For Rhoda:</i> Darien Crago
<i>For Betty:</i> Krista Severeid	<i>For Ralph Sheldrake:</i> Kilty Reidy
<i>For Judy:</i> Kelly Sheehan	<i>For Mrs. Snoring Man:</i> Krista Severeid
<i>For Martha:</i> Kathryn Kendall	<i>For Ezekiel/Mr. Snoring Man:</i> Drew Humphrey
<i>For The General:</i> Cliff Bemis	<i>For Tessie & Quintet:</i> Lea Kohl

*For Ed Sullivan/Mike Nulty/Regency Room Announcer, Quintet,
Regency Room Dancers, Martha's Quartet, Jimmy & Train Conductor:* Andrew Black

Stage Management

Production Stage Manager.....	John W. Calder, III
Stage Manager.....	Sarah Marshall
Assistant Stage Manager.....	Dan Zittel
Additional Non-Performing ASM.....	Sara J. Grady

Touring Musicians

Musical Director/Conductor.....	Michael Horsley
Assistant Musical Director.....	James Cunningham
Drummer.....	Louis B. Crocco

The Irving Berlin's White Christmas touring orchestra welcomes local musicians who will be playing at all performances in Nashville –

Trumpets: Jeff Bailey, Steve Patrick; Trombones: Barry Green, Roy Agee, Ernie Collins;
French Horn: Jennifer Kummer; Reeds: Jimmy Bowland, Denis Solee, Robbie Shankle, Doug Moffet;
Percussion: Ron Sorbo; Keyboard: Steve Kummer; Violin 1: Karen Winkelmann; Violin 2: Janet Darnell;
Cello: Julia Emahiser; Bass: Mike Rinne

Scenes and Musical Numbers

ACT I

- Scene 1: Somewhere on the Western Front of World War II – Christmas Eve, 1944
Happy Holiday/White Christmas.....Bob, Phil & Sheldrake
- Scene 2: The Ed Sullivan Show – 1954
Happy Holiday/Let Yourself Go.....Bob, Phil & the Chorus
- Scene 3: Backstage at the Ed Sullivan Show – after the show; Backstage at Jimmy's
Love and the Weather.....Bob & Betty
- Scene 4: Jimmy's Back Room, a None-Too-Classy Nightspot
Sisters.....Betty & Judy
The Best Things Happen While You're Dancing.....Phil, Judy & Quintet
- Scene 5: A Train Car – later that night
Snow.....Phil, Judy, Bob, Betty, Mr. Snoring Man, Mrs. Snoring Man, Passengers
- Scene 6: The Lobby of the Columbia Inn in Vermont
What Can You Do with a General?.....Martha, Bob & Phil
- Scene 7: The Barn Rehearsal Hall
Let Me Sing and I'm Happy.....Martha
- Scene 8: The Lobby of the Columbia Inn – that night
Count Your Blessings Instead of Sheep.....Bob & Betty
- Scene 9: Ralph Sheldrake's Office, New York/Martha's Switchboard – morning
- Scene 10: The Barn Rehearsal Hall – later that day
Blue Skies.....Bob & the Chorus

ACT II

- Scene 1: Onstage in the Barn Theater – the next day
I Love A Piano.....Phil, Judy & the Chorus
- Scene 2: The Lobby of the Columbia Inn
Falling Out of Love Can Be Fun.....Martha, Betty & Judy
- Scene 3: The Barn Rehearsal Hall – shortly thereafter
Sisters (Reprise).....Bob & Phil
- Scene 4: The Regency Room, New York – the next evening
Love, You Didn't Do Right By Me / How Deep is the Ocean.....Betty, Bob
- Scene 5: The Ed Sullivan Show – the next evening
The Old Man.....Bob, Men
- Scene 6: The Front Desk at the Columbia Inn, Christmas Eve, December 24, afternoon.
Let Me Sing and I'm Happy (Reprise).....Susan
How Deep is the Ocean (Reprise).....Betty & Bob
- Scene 7: Backstage at the Barn Theater – that evening, Christmas Eve
The Old Man (Reprise).....Bob, Phil, Sheldrake, Men
White Christmas.....The Company
- Scene 8: Curtain Call
I've Got My Love to Keep Me Warm.....The Company



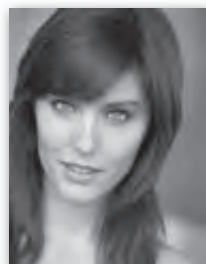
James
Clow



Stefanie
Morse



David
Elder



Mara
Davi



Ruth
Williamson



Joseph
Costa



Cliff
Bemis



Shannon
Harrington



Tony
Lawson



Andie
Mechanic



Kilty
Reidy



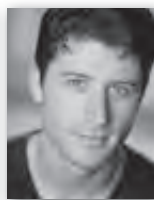
Andrew
Black



Abby
Church



Darien
Crago



Brandon
Davidson



Lucas
Fedele



Alexa
Glover



Andrew
Hodge



Drew
Humphrey



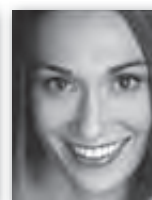
Bryan Thomas
Hunt



Megan
Kelley



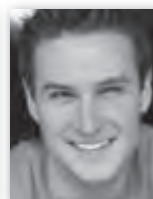
Kathryn
Kendall



Lea
Kohl



Kristyn
Pope



Christopher
Rice



Natasha
Searse



Krista
Severeid



Kelly
Sheehan



Kristen J.
Smith

Who's Who in the Cast

PRINCIPALS

JAMES CLOW (*Bob Wallace*) Broadway: *White Christmas*, *Assassins*, *Wonderful Town*, *Company*, *She Loves Me*, *Blood Brothers*. Madison Square Garden: *Peter Pan*. City Center's Encores!: *Pipe Dream* and *A Tree Grows in Brooklyn*. Off-Broadway: Marc Blitzstein's *Juno*. National tours: *Les Misérables*, *Jekyll & Hyde*, *Oklahoma!*, *Sunset Boulevard*, *Jesus Christ Superstar*, and *Into the Woods*. TV: "The Good Wife", PBS's "Great Performances – Sondheim: A Celebration at Carnegie Hall" and "Live from Lincoln Center – Passion". James holds a BFA from Syracuse University, has attended the London Academy of Music and Dramatic Arts, and Groundlings Improv. Proud AEA member since 1985.

STEFANIE MORSE (*Betty Haynes*) Broadway: *White Christmas* (Marriott Marquis). Tours: *Mamma Mia!* (North America); *White Christmas 2011*; *Fiddler... Roof* (National); *A Chorus Line* (Europe). Regional: *Snapshots* (Lyric-Oklahoma City/Human Race); *A Marvelous Party* (Kansas City Rep/ Florida Studio Theatre/ Florida Stage); *White Christmas* (Curran/ Pantages/Fox); *110 In The Shade/ My Fair Lady* (TUTS); *Starlight Express* (Vegas); *Best...Whorehouse...Texas* (Austin); *State Fair* (World Premiere). West Coast: *Applause/Fiorello!* (Reprise!); *Grease* (Santa Barbara); *Baby* (Sacramento). Other: *White Christmas* cast album; *Having It Almost* (New World Stages); Crystal Cruises – lead vocalist; UCLA – BA in Theater. Much gratitude to my family, friends, agent, and all involved in this production. For Papa.

DAVID ELDER (*Phil Davis*) Broadway: *Curtains* (Bobby Pepper), *42nd Street* (Billy Lawlor, Outer Critics and Astaire Award noms.), *Kiss Me Kate* (Bill Calhoun), *Titanic* (Frederick Fleet), *Once Upon A Mattress*, *Damn Yankees*, *Beauty and the Beast*, and *Guys and Dolls* starring Nathan Lane. Earlier this year, David starred in the World Premier of *The Jack Cole Project* at Queens Theatre. Favorites: Joe Hardy opposite Jerry Lewis in the National Tour of *Damn Yankees* and starring as Timothy opposite Kristin Chenoweth in City Center Encores! production of *Strike Up The Band*. 2012: Albert in *Bye Bye Birdie*, Don Lockwood in *Singing in the Rain*, and Billy in *My One and Only*. TV/Film: *Across the Universe*, *Cradle Will Rock*, *Jeffrey*, and *Guiding Light*. Happy Holidays!!!

MARA DAVI (*Judy Haynes*) Broadway: *Irving Berlin's White Christmas* (Judy Haynes), *The Drowsy Chaperone* (Janet Van de Graaff), *A Chorus Line* (Maggie Winslow). New York: *Death Takes a Holiday* (Alice Lamberti) Roundabout, *No, No Nanette* (Nanette) at City Center Encores! Regional: *Animal Crackers* (Arabella/ Mrs. Whitehead) Goodman Theatre, *Thoroughly Modern Millie* (Millie) Sacramento Music Circus, *Dancing in the Dark* (Gabrielle) Old Globe Theatre. Tour: *42nd Street* (Peggy Sawyer). Film: *New Year's Eve*, *Musical Chairs*, *Every Little Step*. TV: *Blue Bloods* (Bianca Sanfino), *Smash* (Daisy). Band: Mara and the Bitter Suite. Debut album, *Unspoken* available on iTunes and Amazonmp3.

RUTH WILLIAMSON (*Martha Watson*) Broadway: *White Christmas*, *La Cage Aux Folles*, *The Music Man*

(Outer Critics Nomination), *Epic Proportions*, *Little Me*, *Guys & Dolls*, *Smile*, *Musical Comedy Murders*, *Annie* (original). Off-Broadway: *The Green Heart* (Drama Desk Nomination), *The Good Times Are Killing Me*, *Queen Amarantha*. Regional: *The Music Man*, *Les Misérables*, *Guys & Dolls* (Hollywood Bowl), Sacramento Music Circus, Arena Stage, Old Globe, Long Wharf, Goodspeed, MUNY, and six shows with LA's Reprise Series. Film: *Evan Almighty*, *The Producers*, *Legally Blonde II*, *Family Man*, *Malcolm X*, *Foreign Student*, *Easy Six*, *Psycho Beach Party* and *Die Mommie, Die!* (Charles Busch's singing voice). TV: *Monk*, *Medium*, *The O.C.*, *The Practice*, *ER*, *Star Trek: Enterprise*, *Law & Order*, *Hannah Montana* and Mrs. Grubman on *Nip/Tuck*.

JOSEPH COSTA (*General Waverly*) Broadway: *The Best Man*. Off-Broadway: *The Tempest*, *Julius Caesar*, *Love's Labours Lost*, *Henry V*, *Titus Andronicus*, *A map of the World*, *Macbeth*, all for Joseph Papp's New York Shakespeare Festival. *The Crucible* and *The Show-Off*, Roundabout Theatre. *Jail Diary of Albie Sachs*, Manhattan Theatre Club. National Tours, *Dirty Dancing* and *Irving Berlin's White Christmas*. Over 125 regional theatre productions for Actors' Theatre of Louisville, Alley Theatre, Goodman Theatre, Yale Repertory Theatre, the Williamstown Theatre Festival and many others. Guest star on many television productions and appearances in the films *Off The Black*, *First Born*, *Power*, *Without a Trace* and *Prisoner Without a Name*.

CLIFF BEMIS (*Mr. Snoring Man/Ezekiel Foster/ Quintet*) originated the role of Ezekiel Foster in *Irving Berlin's White Christmas* on Broadway as well as San Francisco, Los Angeles, and Detroit. Off-Broadway as Chris in *New Girl In Town* at Irish Rep, First National tour of *The Drowsy Chaperone*, *Pool Boy* at Barrington Stages, *Twist*, at the Pasadena Playhouse. Films; *Billy*, *Nancy Drew*, *World Trade Center*, *Au Pair II*. Over 75 TV appearances, including *White Collar*, *Law and Order SVU*, *One Life To Live*, *Dallas*, and *Cheers* to name a few. He also established the Cliff Bemis Music Theatre Scholarship at his alma mater, Baldwin Wallace University in Ohio. Member of Actors' Equity since 1968, visit www.cliffbemis.com.

SHANNON HARRINGTON (*Susan Waverly*) age 8, Regional: *Gypsy* (Baby June). Performed on *America's Got Talent* Season 5, in front of the celebrity judges at the Hammerstein Ballroom NYC. She was featured with her sister in a promo for the show on NBC. She's been seen nationally on TV on the Biography Channel and Sprout. Along with her many commercial credits she can be heard nationally on the radio for AT&T. Thanks to cast and crew, Binder Casting, Theater of the Stars, CESD, and Station 3 Entertainment. Let her sing and she's happy! See her on the web @ ShannonHarrington.US

TONY LAWSON (*Ralph Sheldrake/ u/s Bob Wallace*) Broadway: Thenardier in *Les Misérables*. National Tours: *Damn Yankees* opposite Dick Van Dyke, *Disney's Beauty and the Beast*, *42nd Street* and Ken Hill's *Phantom of the Opera*. Regional: Fagin in *Oliver!* (Paper Mill), Bruce Granit in *On the Twentieth Century* (Goodspeed), Harold Hill in *The Music Man* (Arena Stage), Fred

Graham in *Kiss Me Kate* (Maine State) and Colonel Falstaff in *Lone Star Love* (5th Avenue). So blessed to be working with his wife, Krista Severeid, on this tour! Proud Dad to twin sons, Dean & Ben.

ANDIE MECHANIC (*Susan Waverly*) Theater: Broadway – Young Red (*People In The Picture*). Regional - Susan Waverly (*White Christmas*, Paper Mill Playhouse), Young Cosette (*Les Misérables*), Molly (*Annie*, Tarrytown Music Hall), Lady Larkin (*Once Upon a Mattress*), Sparrow (*A Year with Frog and Toad*). Web: “The Confession” (directed by Kiefer Sutherland). Thanks to my family, friends and teachers for their support and love.

KILTY REIDY (*Mike Nulty/Ed Sullivan Show Announcer/Regency Room Announcer*) Broadway: *The Drowsy Chaperone* and *In My Life*. Other stage credits include: *Bye Bye Birdie* at The City Center Encores!; *The Producers* (Roger De Bris) at Kansas City Starlight Theatre; *Crazy For You* at Paper Mill Playhouse filmed for PBS Great Performances; *King of Hearts* at Goodspeed Opera House; *The Music Man*, *A Christmas Carol* and Sam D. Hunter's play *When You're Here* at The Geva Theatre Center; *A Funny Thing Happened on the Way to the Forum* (Hysterium) and *Once Upon a Mattress* (Prince Dauntless) at Music Theatre of Wichita. Mr. Reidy is proud to have created the role of Mike Nulty in *Irving Berlin's White Christmas*. A member of Actors' Equity Association and The New York Public Theater's 2011 Shakespeare Lab. www.kiltyreidy.com

ENSEMBLE

ANDREW BLACK (*Dance Captain, Swing*) has performed from the stage of Carnegie Hall to the streets of Tokyo's DisneySea. Credits include: *Irving Berlin's White Christmas* (Dance Captain and Swing); *42nd Street* (Andy Lee); *Thoroughly Modern Millie* (Dance Captain); *Joseph...* (Swing) and *Freshly Tossed* (NYMF). Andrew teaches theater and tap dance at STEPS, NYC.

ABBY CHURCH (*Ensemble/Rita*) is thrilled to be back in Pine Tree after making her Broadway debut with *White Christmas* in 2009. Other Broadway: *How to Succeed...* (Rosemary u/s). Tours: *Billy Elliot* (1st National), *42nd Street* (Asia). Off-Broadway/Regional: Irish Repertory Theatre, NSMT, Atlanta TOTS/Houston TUTS, Hangar Theatre. BFA in Acting, Ithaca College. Thanks and love to the best Christmas gift a girl could ask for – her family.

DARIEN CRAGO (*Ensemble/Rhoda u/s*) is honored to be joining the *White Christmas* cast in her first national tour! A Westerville, OH native, Darien received her BFA from Wright State University. Regional: *42nd Street* (Peggy), *Dames at Sea* (Joan), *Spelling Bee* (Logainne). Love to everyone who's helped her follow her dream! www.DarienCrago.com

BRANDON DAVIDSON (*Ensemble*) played the lovesick Freddy in *My Fair Lady* this summer. NYC Encores!: *Gentlemen Prefer Blondes* (Sony Cast Album) & *No No Nanette*. 1st Nat'l Tour: *White Christmas*. Also, Don Lockwood in *Singin' In The Rain*, Joe Hardy in *Damn Yankees*. Soloist with Boston Pops, conductor Keith Lockhart. Boston Conservatory.

LUCAS FEDELE (*Ensemble*) is so excited to be making his *White Christmas* debut with such an amazing team. He has appeared regionally with Kansas City Starlight, WVPT, Pittsburgh CLO and as “Ike Skidmore” in Arena

Stage's acclaimed production of *Oklahoma!* (starring Andrew Hodge). Native yinzer, Point Park graduate, and proud Equity member. For Dui.

ALEXA GLOVER (*Ensemble*) is excited to spend the holidays dancing in *White Christmas*. In the past, she loved eye-high kicking as a Radio City Rockette and touring the country with *Monty Python's Spamalot* and *Doctor Dolittle*. She sends huge amounts of love and thanks to her family and Chris.

ANDREW HODGE (*Ensemble*) Previous Tours: *A Chorus Line*, *Cats*, *42nd Street*. Regional: Arena Stage (*Oklahoma!*, Helen Hayes Outstanding Ensemble nomination), Westchester Broadway Theater (*42nd Street*, Billy Lawlor understudy), North Shore Music Theater, Ogunquit Playhouse, Berkshire Theatre Festival. Andrew is a songwriter, choreographer, PADI-certified SCUBA diver and founding member of The Boop Troupe.

DREW HUMPHREY (*Ensemble/ u/s Phil*) Broadway: *White Christmas* (Cast Recording); New York/Tours: *Of Thee I Sing* (Encores!), *42nd Street* (1st National); Regional: *Crazy for You* (Bobby Child), *Singin' In The Rain* (Cosmo), *Cats* (Skimbleshanks), *The Music Man* (Tommy Djilas), *West Side Story* (Snowboy). Happy Holidays – to my family, my friends and my wife!

BRYAN THOMAS HUNT (*Ensemble*) is thrilled to be on tour with *White Christmas*. National Tour: *Billy Elliot* Regional: *White Christmas* (Paper Mill Playhouse), *The Big Bank* (NYMF) *A Chorus Line* (Berkshire Theatre Festival) *A Chorus Line* and *Hair* (New Bedford Festival Theatre). BFA Boston Conservatory 2011. Thanks to Binder Casting, The Mine, and Randy Skinner. Love to his always supportive and caring family Mom, Dad, Alicia, Nanny and Sharon.

MEGAN KELLEY (*Ensemble*): is so thrilled to be performing again in *White Christmas!* Credits: Regional; Infinity Theatre Company: *Dames At Sea* (Ruby), The Engeman Theatre: *42nd Street* (Ensemble, u/s Peggy Sawyer), Paper Mill Playhouse: *White Christmas* (Ensemble), Merry-Go-Round Playhouse: *Anything Goes* (Angel-Purity) and *42nd Street* (Diane), Musicals At Richter: *42nd Street* (Peggy Sawyer).

KATHRYN KENDALL (*Ensemble/Mrs. Snoring Man/ Sheldrake's Secretary/Quintet/ u/s Martha*) NY/National Tours: *Jerome Robbins' Broadway* (Hildy, Mazeppa, Mr. Monotony Singer), *42nd Street* Revival (Dorothy/Maggie), *Nunsense* 25th Ann. Tour (Robert Anne), Showboat (Ellie), *Anything Goes* (Reno), *Merman!* (Lincoln Center), *George White Scandals* (New Amsterdam). Regional Favorites: *Hello Dolly* (Dolly), *Mame* (Mame), *Gypsy* (Rose), *Mack & Mabel* (Lottie). TV: *Edge of Night*, *Loving*. Graduate of the Boston Conservatory.

LEA KOHL (*Ensemble/Female Swing/Asst. Dance Captain/Tessie u/s*) Thrilled to share the IBWC magic again! *42nd St* (Peggy US, 1st nat'l), *IBWC* (Swing, Detroit's Fox & ToTS tour). Other theatres: Goodspeed, Flat Rock, Pioneer, Broadway Rose, Westchester Broadway, Rainbow Room, and City Center. Member Walden Dance Theatre. Film: *Hunger* (Anna). Thanks to Lisa, love to K's B's and Paul! www.leakohl.com

KRISTYN POPE (*Ensemble*) is grateful to Binder Casting, Norb, Randy, Michael, and “TOTS family” for

this opportunity. Broadway/ NYC performances include *42nd Street* (Revival), ...*White Christmas*, *Radio City Christmas...*, and *Gentlemen Prefer Blondes*. Regional performances include *Sophisticated Ladies*, *My One and Only*, *The Producers*, *Anything Goes*, *Oklahoma!*, *Cabaret*, and *Hello, Dolly*. BA Psychology, Northwestern University. PS 100Apage.

CHRISTOPHER RICE (*Ensemble*) Happy Holidays! 1st National tours: *West Side Story* (Baby John, Tony cover). Credits include: *Rent* (Mark), *Hairspray* (Link) *A Chorus Line* (4x). TV: ABC's *Good Afternoon America*. BFA University of Oklahoma. Thanks to God, family, friends, BLOC, and the *White Christmas* team for this great opportunity! www.ChristopherRiceOnline.com

NATASHA SCEARSE (*Ensemble*) is ecstatic to be making her tour debut! Regional favorites: MTW and Lyric OKC: *Crazy For You* (Patsy), *Annie* (u/s Lily), *Sweet Charity*, *The Little Mermaid*, *Call Me Madam*. Proud OCU grad. Much love to my incredible family, friends, teachers, and mentors. Ephesians 3:20.

KRISTA SEVEREID (*Ensemble/Tessie/Quintet/u/s Betty*) is pleased to join this merry company! Recent credits: *Meet Me In St Louis* (Esther), *Legally Blonde* (Elle), *Dirty Rotten Scoundrels* (Jolene) and *Sunday in the Park...* (Celeste, 5th Avenue Theatre). Opposite her husband, Tony Lawson: *Camelot*, *Guys & Dolls*, *Phantom*, *Seven Brides...* and this one! Count our blessings, Tone!

KELLY SHEEHAN (*Ensemble/Rhoda/ u/s Judy*) Broadway: *IBWC*, (08 & 09), *42nd Street*, Lorraine Flemming. Other: *Gentlemen Prefer Blondes*, *Pipe Dream*, *No, No, Nanette*, City Center Encores! *Singing in the Rain*, *Girl in Green/Zelda*, *Bye Bye Birdie*, *Gloria Rasputin* (Muny). Tons of love to Mom and Dad! Happy Holidays!

KRISTEN J. SMITH (*Ensemble/ u/s Rita*) National Tour: *South Pacific*. Regional: *White Christmas* (Ordway); *An American in Paris* (Alley); *The Music Man* (Arena Stage); *My One and Only* (Goodspeed); *Fiddler on the Roof*, *Seven Brides...*, *Disney's The Little Mermaid*, *Crazy For You*, *Thoroughly Modern Millie* (Sacramento Music Circus); *Singin' in the Rain*; *42nd Street*. www.kristenjsmith.com

STAGE MANAGEMENT

JOHN W. CALDER, III (*Production Stage Manager*) Equity member since 1981. 4th tour of *Irving Berlin's White Christmas*. Credits include *Best Little Whorehouse in Texas*, *Forbidden Broadway*, *Les Misérables*, *Disney's High School Musical-On Stage* (original Production and Tour) *The Light in the Piazza*, *A Chorus Line* (Donna McKechnie), *Dreamgirls* (Jennifer Holliday), *Anything Goes* (Chita Rivera), *Hello, Dolly!* (Madeline Kahn), *Carousel* (Patrick Wilson), Harold Prince's *Show Boat*, *West Side Story*, *Evita*, *Into the Woods*, *The Secret Garden*, *Phantom*. He's worked with: President Bill Clinton, Hillary Clinton, Michael Jackson, Madonna, Muhammad Ali, Gwen Verdon, Meryl Streep, Angela Lansbury, Barbara Cook, Julie Andrews. An avid Musical Theater collector (10,000+ recordings). JWC3LACA@aol.com

SARAH MARSHALL (*Stage Manager*) is pleased to continue her longstanding relationship with Theater Of The Stars, having previously participated in the premiere production of *High School Musical* and *High School*

Musical 2 in Atlanta. Tour credits include: *High School Musical*, *Bombay Dreams*, *Beauty And The Beast*, *Sound Of Music*, *Parade & Brigadoon*.

DAN ZITTEL (*1st Assistant Stage Manager*) is honored to be working again for TOTS. His TOTS credits include *Disney's High School Musical 1 and 2*, *42nd Street*, *The Sound of Music*, *Fiddler On The Roof* and most recently *The King and I*. He has managed numerous productions Off B'way, at Regional Theatres, in Summer Stock and on tour. For six years he was the Kennedy Center's Production Coordinator for The American College Theatre Festival and assisted on the KC's production of *American Buffalo* with Al Pacino. Dan is very grateful to his mentor and dear friend Charlie Davisson.

SARA J. GRADY (*2nd Assistant Stage Manager*) Credits include: *Canon In D Minor* (Fringe Encores at Soho Playhouse), *Giovanni the Fearless* (Symphony Space), *Holler If Ya Hear Me* (reading), *Stormy Weather* (reading), *Handle With Care* (reading), *A New Television Arrives, Finally* (Theater 54 @ Shetler Studios), *The Medicine Show* (NY International Fringe Festival). Received a BFA in Production from Mason Gross School of the Arts at Rutgers University.

ACTORS' EQUITY ASSOCIATION (AEA) Founded in 1913, represents more than 45,000 actors and stage managers in the United States. Equity seeks to advance, promote and foster the art of live theatre as an essential component of our society. Equity negotiates wages and working conditions, providing a wide range of benefits, including health and pension plans. AEA is a member of the AFL-CIO, and is affiliated with FIA, an international organization of performing arts unions. The Equity emblem is our mark of excellence. Actorsequity.org.

AUTHORS

IRVING BERLIN (*Music & Lyrics*) Born Israel Beilin in a Russian Jewish shtetl in 1888, he died as Irving Berlin in his adopted hometown of New York City in 1989. Songwriter, performer, theatre owner, music publisher and soldier, he wrote scores to more than a dozen Broadway musicals (including *Annie Get Your Gun*) and dozens of Hollywood movie musicals. His more than 1,200 songs include "White Christmas," "Puttin' on the Ritz," "Easter Parade," "Always," "Blue Skies," "Cheek to Cheek," "There's No Business Like Show Business," "Alexander's Ragtime Band" and "God Bless America." Irving Berlin's love and generosity to his country is legendary, and through several ongoing foundations, including the God Bless America Fund, he donated millions of dollars in royalties to Army emergency relief and the Boy and Girl Scouts. Numerous awards and accolades include an Academy Award for *White Christmas*, a Congressional Gold Medal, a special Tony Award and commemoration on a U.S. postage stamp.

DAVID IVES (*Book*) is the author of *All in the Timing*, *Time Flies, Is He Dead?* (adapted from Mark Twain), and *New Jerusalem: The Interrogation of Baruch de Spinoza*, among other titles. His off-Broadway hit of last season, *Venus In Fur*, is headed for Broadway this season, and in the spring he will have a new show off-Broadway, *The School For Lies*, his adaptation of Moliere's *Misanthrope*. Also expected in New York is hit recent hit at the Shakespeare Theatre of Washington, *The Liar*, translated and adapted from the comedy by Corneille.

PAUL BLAKE (*Book*) Paul Blake has served as Executive Producer of the St. Louis Muny since 1990; with 11,350 seats, the Muny is America's largest theatre. At The Muny, where *Irving Berlin's White Christmas* began in Summer 2000, Mr. Blake has produced over 150 productions, which starred such legends as Phyllis Diller, Captain Kangaroo and the Radio City Rockettes. His new musical, *Roman Holiday*, with a score by Cole Porter, will have its American premiere at The Guthrie Theatre in Minneapolis, the summer of 2012.

CREATIVES

NORB JOERDER (*Director*) His work can be seen from Broadway to regional theaters across America and to European and International productions. He reunited Robert Goulet and *Camelot* for a critically acclaimed revival on Broadway and a record breaking National tour. He also staged the Richard Harris International *Camelot* that toured Australia and Europe. In New York, he has directed and choreographed revivals of *42nd Street* with Jerry Orbach and Tammy Grimes, *La Cage Aux Folles* with Gene Barry and Lee Roy Reams, *Gypsy* with Lanie Kazan, *Guys and Dolls* with Vic Damone, *The Music Man* with John Schneider, *Annie Get Your Gun* with Andrea McArdle and *My Fair Lady* with Michael Moriarty. Regionally he has worked for Theater Under The Stars in Houston, the 5th Avenue Theatre in Seattle, Dallas Summer Musicals in Dallas and Music Fair Productions in New York and Pennsylvania. He has also staged over 25 musicals for The Jupiter Theatre and Richard Akins Productions of Jupiter, Florida. For his work there, Norb was nominated over twelve times and received the Carbonell Award for excellence in theater in southern Florida.

RANDY SKINNER (*Choreographer*) Shows include: *42nd Street* (Tony, Drama Desk, Outer Critics, Astaire nominations), *Ain't Broadway Grand* (Tony, Outer Critics nominations), *Irving Berlin's White Christmas* (Tony, Drama Desk nominations), *State Fair* (Outer Critics nomination), *After The Night And The Music* (MTC/ Biltmore), *Do Re Mi*, *Of Thee I sing*, *Face The Music*, *No No Nanette*, *Gentlemen Prefer Blondes* (the last five at City Center Encores), *Lone Star Love* (Lucille Lortel nomination), Broadway: *Three Generations* (Kennedy Center), *Lend Me A Tenor The Musical* (West End), *Stormy Weather* (with Leslie Uggams/Pasadena Playhouse), *An American In Paris* (Alley Theatre). In Los Angeles: Garry Marshall's *Happy Days*, *Hello Dolly* (with Nell Carter), *Pal Joey* (with Dixie Carter, Elaine Stritch), *Strike Up The Band* (with Tom Bosley). He has received the LA Drama Critics, LA Dramalogue, Bay Area Critics, Connecticut Critics, and Cleveland Times Theatre Awards.

MICHAEL HORSLEY (*Musical Director*) is the music supervisor for the St. Louis MUNY, America's largest outdoor theatre. His national tours include *White Christmas*, *Thoroughly Modern Millie*, *Chicago* with Chita Rivera and Ben Vereen, *42nd Street*, *Seven Brides For Seven Brothers*, and *Cinderella*. Broadway: *Chicago*, *Seussical*. He coached and accompanied solo concerts for Lee Roy Reams, Judy Kaye, Luci Arnaz, Shirley Jones, Karen Mason, and Tovah Feldshuh. Vocal direction: Christmas Concert Series for the Detroit Symphony, National Symphony, and Birmingham Symphony Orchestras. Regional theatre work: Boston, Detroit Fox, & Toronto companies of *White Christmas*, Pioneer

Theatre, Music Theatre Wichita, North Carolina Theatre, Paper Mill Playhouse & Guthrie Theatre.

KENNETH FOY (*Scenic Design and Adaptation*) - Houston Grand Opera: *Carmen*, *Madama Butterfly*, *Pagliacci* and *A Little Night Music*. *Porgy and Bess* for Milan's La Scala Opera: national tours of *The Sound of Music*, *The King and I*, *My Fair Lady*, *Bombay Dreams*, *Doctor Dolittle* and Dolly Parton's *9 to 5*. The American Opera Center Xerxes and Regina. Broadway: *Candida*, starring Joanne Woodward, *Macbeth* with Nicol Williamson, David Merrick's production of *Oh, Kay!*, *Annie*, *An Evening With Jerry Herman*, and the Tony award winning productions of *Gypsy*, directed by Arthur Laurents and Dame Edna: The Royal Tour. West End: *Annie* and the English National Theatre production of *The Syringa Tree*, which he also designed in New York. Art direction for the Emmy winning Pulitzer Prize documentary, *Moment of Impact*, *Annie* in Australia, sets for Radio City Music Hall, video animation for The Mariah Carey Charm Bracelet Tour, production design for Ringling Brothers and Barnum & Bailey Circus and the world premier productions of *Disney's High School Musical*.

ANNA LOUIZOS (*Set Designer for Broadway*) Designed the Broadway production of *Irving Berlin's White Christmas* as well as annual US and UK productions since 2004. She has received two Tony Award nominations for *In the Heights* (2008) and *High Fidelity* (2007). Other Broadway credits include *Avenue Q* (including the national tour and London); *Curtains*; *Steel Magnolias*; *Golda's Balcony* (also national tour with Valerie Harper); *All About Me*; *To Be Or Not To Be*. Off-Broadway: *Vanities, the Musical*; *Crimes of the Heart* (directed by Kathleen Turner), *The Foreigner* (starring Matthew Broderick); *The Altar Boyz* (world premier); Jonathan Larson's *tick, tick... BOOM!* (world premier). Other US tours and regional: *Disney Live Winnie the Pooh*; *Minsky's*; *Baby It's You*; *Seven Brides for Seven Brothers*; *The Baker's Wife*; *Emmet Otter's Jug-Band Christmas*, *Me and My Girl*, *Band Geeks*, *Radio Girl* and many other regional theatre productions. Art Direction film/TV: "Sex and the City" (HBO) Feature Film: *The Secret Lives of Dentists*.

CARRIE ROBBINS (*Costume Designer*) Work includes over 30+ BROADWAY SHOWS, e.g. *Class Act* (Sarah Ramirez), *Grease* (Travolta), *Agnes of God*, *Yentl*, *Sweet Bird of Youth* (Bacall), *Frankenstein* (Wiest), *Happy End* (Streep), *Boys of Winter* (Dillan/ Snipes), *Cyrano* (Langella), *Octette Bridgeclub*. Robbins was given TDF's "2012-LIFETIME ACHIEVEMENT AWARD" for Costume Design. AWARDS incl: 2 'Tony' Noms, 5 DramaDesk Awards, Maharam, 3 USITT/ Prague International, Hughes noms., F.I.T-Surface Design, Audelco. Robbins designed *M. Butterfly*, *On the Verge* (ArenaStage), & *Death in Venice* (Glimmerglass) for dir. Tazewell Thompson, Gershwin musical *American in Paris* (Alley), & *Samson et Dalila* (S.F.Opera). Known for drawing skill, Robbins' work appears in the Time-Life Series – Collectibles and "Costume Design, Techniques of Modern Masters" (Watson-Guptil). A MONOGRAPH ON Robbins' designs (USITT/B'way Press) is now available (Amazon.com). Her Cincinnati Ballet's "New Nutcracker" designs can be seen this Christmas.

KEN BILLINGTON (*Lighting Designer*) has 94 Broadway shows to his credit including such theatre milestones as *Sweeney Todd* and the current productions of *Chicago* and Hugh Jackman in *Concert*. Current touring productions *Chicago* (Worldwide) *Riverdance* (lighting supervisor), *Fiddler on the Roof* and the seasonal *White Christmas* UK & US. Past touring productions have included *9 to 5*, *Dreamgirls*, *High School Musical*, *The Drowsy Chaperone*, *Doctor Doolittle* and *Annie* to name a few. Other projects include New York's *Radio City Music Hall Christmas Spectacular* from 1979 to 2005, the Las Vegas spectacular *Jubilee!*, *Shamu One Ocean* and *Shamu Rocks!* for Seaworld Orlando, San Diego and San Antonio. Ken is the recipient of Tony, NY Drama Desk, Outer Critics, Ace Award for Television lighting and The Lumen for his Architectural work.

PETER FITZGERALD (*Sound Designer*) Designed the sound and co-produced a new musical *Just Another Man* starring Clint Holmes. Past designs: *The Wiz* at La Jolla Playhouse, *Evil Dead the Musical*, Billy Joel's *Movin' Out*, *Ring of Fire*, *The Great American Trailer Park Musical*, *La Cage Aux Folles*, *Victor/Victoria* with Julie Andrews, *City of Angels*, *Gypsy*, *Falsettos*, Paul Simon's *The Capeman*, *The Will Rogers Follies*, *M. Butterfly*, Barry Mann and Cynthia Weil's *Who Wrote That*, *Swing, Minnelli on Minnelli* with Liza, *Dream*, *Threepenny Opera* with Sting, *The Best Little Whorehouse in Texas*. Noted plays: *The Odd Couple*, *M. Butterfly*, *Stones in His Pockets*, *The Beauty Queen of Leenane* and *A Thousand Clowns*. Mr. Fitzgerald is President of Sound Associates, Inc. a premier provider of sound and video systems to the theater. Peter and wife Maritza are the proud parents of daughters Lori and Mallori.

BINDER CASTING (*Casting*) with Jay Binder, CSA, Jack Bowdan, CSA, Mark Brandon, CSA, and Jason Styres. Broadway: *Nice Work If You Can Get It*, *Born Yesterday*, *The Lion King*, *Finian's Rainbow*, *Brighton Beach Memoirs*, *A Chorus Line*, *Gypsy*, *The 39 Steps*, *Irving Berlin's White Christmas*, *Is He Dead?*, *Inherit the Wind*, *Journey's End*, *Butley*, *Virginia Woolf*, *Sweet Charity*, *Wonderful Town*, *Movin' Out*, *42nd Street*, *The Music Man*, *Iceman Cometh*, *Beauty & the Beast*, *The Last Night of Ballyhoo*, *Chicago*, *The King & I*, *Damn Yankees*, *Lost in Yonkers*, *Jerome Robbins' Broadway*, *The Goodbye Girl*, and every City Center Encores! production. Film: *Hairspray*, *Dreamgirls*, *Chicago*, *Nine*. Eight-time Artios Award winner.

JOHN EDKINS (*Production Technical Supervisor*) has worked with the Pittsburgh Civic Light Opera for over 15 years, 10 of them as their Production Supervisor. He owns JE Scenic Technologies, Inc., a theatrical scenic production services and storage company. The company designs and constructs everything from sets for television news rooms to grand scale operas. Nationally and internationally, John was Production Supervisor for *The Phantom of the Opera* and *Cabaret*. He is one of three Technical Supervisors who oversee all new productions for Cameron Mackintosh's office.

LARRY BLANK (*Orchestrations*) Tony nominated for Orchestrations for *Irving Berlin's White Christmas*; *Catch Me If You Can* with composer Marc Shaiman and *Carousel* (London), *The Drowsy Chaperone*, *Fame*

Becomes Me, *La Cage aux Folles*, *The Producers* (Broadway, London), *Guys and Dolls* (London), *Fiddler On The Roof* (London), *The Black and White Ball* (London), *An American In Paris*, *Cinderella*, *Roman Holiday*, *Thoroughly Modern Millie*, *Beautiful and the Damned* (London), *Seussical* (Tour) and *White Tie and Tails*. Film work includes *Chicago*, *The Producers* and six films for composer Marc Shaiman (including *South Park*). He has done concert and recording orchestrations for Barbara Streisand, Barbara Cook, Liza Minnelli, Michael Crawford, John Barrowman, Michael Feinstein, Barry Manilow, Bernadette Peters, Martin Short, Tommy Tune, Nathan Lane and Marilyn Horne; served as music director for the acclaimed *Sweeney Todd* at the Kennedy Center's Sondheim Festival as well as many Broadway shows.

BRUCE POMAHAC (*Dance and Vocal Arrangements*) was the musical director and (with composer Hugh Martin) co-vocal arranger for Broadway's *Meet Me in St. Louis*. He orchestrated the Broadway productions of *State Fair* (Rodgers & Hammerstein) and *The Curse of an Aching Heart* (Claibe Richardson). He orchestrated the premiere recordings of Richard Rodgers' first and final musicals: *Fly With Me* and *I Remember Mama* (which he also conducted). With Joshua Logan (book, lyrics and direction) he composed the score for *Huck and Jim* (On the Mississippi). Mr. Pomahac is the director of music for Rodgers & Hammerstein: An Imagem Company, and lives in New York City.

SARA BRIANS (*Assistant Choreographer*) *White Christmas*: San Francisco, the United Kingdom, and on Broadway. Her other Broadway credits include *Billy Elliot* (Resident Choreographer), *After the Night and the Music* (Assistant Choreographer) and *42nd Street* (Assistant Dance Captain). Choreography credits include *Pippin*, *Anyone Can Whistle*, *Houdini*, *The Gay No More Telethon*, the music video *It Could Be*, and numerous industrials. Sara has assisted Randy Skinner on *Gentlemen Prefer Blondes*, *Of Thee I Sing*, *Broadway: 3 Generations*, *An American in Paris* and *Lone Star Love*. Her television appearances include *The Late Show with Jay Leno*, *The Donnie and Marie Show*, *Good Morning America* and The Macy's Thanksgiving Day Parade.

MANAGEMENT

BRIAN D. FREY (*Vice President/General Manager*) Mr. Frey's career in professional theatre spans over 27 years and thousands of miles around the world. He has worked as a performer as well as a Producer, Production Manager, Technical Director, Lighting Designer and Pyrotechnician. He was the Associate Lighting Designer for the renovation of the US Grant Hotel in San Diego and the Project Coordinator for Cirque du Soleil and Celebrity Cruises. He serves as an advisor to the Shuler Hensley Awards and as Production Manager/Lighting Designer for the Junior Theatre Festival. He is a 22 year member of I.A.T.S.E., the union of professional stage employees. Happy Holidays.

AMY WHITE (*Company Manager*) started her theater career as the Associate Company Manager for the National Tour of *Master Class* starring Faye Dunaway. She recently was Company Manager for National Tours of *August: Osage County* (Estelle Parsons), *42nd Street*, *Twelve Angry Men* (Richard Thomas), *Disney's High School Musical*, *Beauty and the Beast*, *Bombay Dreams*,

The King & I (Sandy Duncan / Stefanie Powers), *My Fair Lady*, *Annie* (John Schuck, Marcia Lewis), *A Chorus Line*, *Dreamgirls* (Frenchie Davis) and the 2003 tour of *The Sound of Music*. Hal Prince's *Parade*, the 20th Anniversary tour of *Annie* (John Schuck, Sally Struthers) *Chicago* (1st National Tour), *West Side Story* and *Rocket Power*.

PRODUCERS

THESEUS PRODUCTIONS, LLC (*Executive Producer*) was created in 2010 by Christopher B. Manos and Nicholas F. Manos to acquire, manage and nurture long term touring rights for established Musical Theater titles. The Company's first touring production is *Irving Berlin's White Christmas* with the hope of many touring productions with the company in the future. Chris is the producer of Theater of the Stars, Inc (TOTS) and has been with TOTS for over 50 years. Nick is the president of TOTS and has been with the company for 10 years. Both are committed to Executive Producing exceptional musical theater productions.

THEATER OF THE STARS (*Tour Producer - Christopher B. Manos, Producer; Nick Manos, President*) is one of America's premier not-for-profit Regional Theaters with a 58-year mission of producing and presenting the best of musical theater. Based in Atlanta, TOTS mounts lavish productions of new and classic musicals at affordable prices with the goal of expanding traditional audiences, enhancing the availability of quality family entertainment, and exposing new audiences to the magic of live theater. Visit us at www.theaterofthestars.com.

LICENSORS

PARAMOUNT LICENSING (*Licensor*). Paramount Licensing Inc. licenses rights for stage plays based on Paramount Pictures' rich 3,000 film library. Paramount has been producing motion pictures for nearly 100 years, including such prominent films as *Breakfast at Tiffany's*, *The Godfather*, *Forrest Gump*, *Raiders of the Lost Ark*, *Transformers*, and *Titanic*. Some Paramount titles developed or in development for the stage include *White Christmas*, *Sunset Boulevard*, *Roman Holiday*, *Saturday Night Fever*, *Footloose*, *Flashdance*, *Clueless*, and *The First Wives Club*. Paramount Pictures is a unit of Viacom Inc., a leading content company with prominent and respected film, television and digital entertainment brands.

R&H THEATRICALS (*Licensor*) represents the stage performance rights to over 100 musicals by more than 200 writers. These include works by Rodgers & Hammerstein (including *Oklahoma!*, *South Pacific* and *The Sound of Music*), Rodgers & Hart (*Pal Joey*, *Babes In Arms*), and Kern & Hammerstein (*Show Boat*), as well as musicals by Irving Berlin (*Annie Get Your Gun*, *White Christmas*), Andrew Lloyd Webber (*Cats*, *The Phantom of the Opera*), Adam Guettel (*The Light in the Piazza*, *Floyd Collins*), Kurt Weill (*The Threepenny Opera*, *Lady In The Dark*), such perennials as *Big River*, *Once Upon A Mattress* and *Footloose*, and the longest-running revues in the history of Broadway – *Smokey Joe's Cafe* – and Off-Broadway – *I Love You, You're Perfect, Now Change*. Recently added titles include *In The Heights*, *A Catered Affair*, *It's Only Life*, [title of show], *Love Musik*, *Face The Music*, *Reefer Madness*, *Altar Boyz*, *Bernarda Alba*, *Mid-Life! The Crisis Musical*, and *Bright Lights, Big City*. R&H Theatricals is an Imagem company: www.rnh.com.

Theater of the Stars Staff

Producer Christopher B. Manos
President..... Nicholas F. Manos
Vice President/General Manager..... Brian D. Frey
Director of Special Projects/Contracting...Marguerite Daniel Mancini

WHITE CHRISTMAS Staff

Company ManagerAmy A. White
Assistant Company Manager..... Sara J. Grady
Production Stage Manager John W. Calder, III
Stage ManagerSarah Marshall
1st Assistant Stage Manager..... Dan Zittel
Additional Non-Performing ASM Sara J. Grady
Musical DirectorMichael Horsley
Associate ConductorJames Cunningham
Drummer Louis B. Crocco
Assistant Choreographer Sara Brians
Dance Captain..... Andrew Black
Assistant Dance Captain Lea Kohl
Moving Light Programmer..... Jim Ohrberg
Scenic PaintingMichael Hagen, Inc
Associate Scenic Design..... Stephen Cowles
Associate Lighting DesignerJonathan Spencer
Assistant Sound DesignerJanet Smith
Production Supervisor John R. Edkins
Casting Associates..... Binder Casting
Costume Coordinator Ricky Jay Yates
Tutoring Provided by On Location Education
Wrangler..... Andrea Schnee

Special Management Consultant to Tour
John Corker

Crew

Head Carpenter.....Edward J. Creasy
Assistant Carpenter.....Randy Moreland
Assistant Carpenter, Rail..... Terry Behle
Head Electrician.....Dustin Adams
Assistant Electrician..... Jada Cox
Assistant Electrician.....Christina Aikman
Head Sound Engineer/Mixer.....Harry Platt
Assistant Sound/MonitorsDavid Kobernuss
Prop HeadMolly Faulk
Asst. Props Chris Kelly
Wardrobe Supervisor Betty Johnson
Assistant Wardrobe..... Don Skelton
Hair & Wig Supervisor Diane Spence

Other Credits

Trucking.....Clark Transfer
Scenery PaintingMichael Hagen, Inc.
Payroll Paychex Payroll
Lighting Equipment.....PRG
Sound Equipment Sound Associates
Tech Rehearsal FacilityHershey Theatre
Rehearsal Studios..... Pearl Studios, NYC
Stephen Roath, GM

Special thanks to Kevin McCollum, John Corker and the Producers of the Broadway Productions of *Irving Berlins' White Christmas* for their support and assistance in making this tour possible.

Tour Direction

The Booking Group
Meredith Blair, Kara Gebhart
www.thebookinggroup.com

CASTING

BINDER CASTING
Jay Binder, CSA
Jack Bowdan CSA, Mark Brandon, CSA
Jason Styres

Stock and amateur rights for IRVING BERLIN'S WHITE CHRISTMAS are represented by R&H Theatricals, an Imagem Company.





monograms

anatra jewel

615-352-9696

6027 hwy 100 • nashville • TN • 37205

anatrajewel.com



*A school recognized as
much for where it is going...
as it is for where it s coming from.*

Lipscomb Academy is a prekind ergarten through 12th grade Christ centered school with a passion for academic excellence, and the only independent school in the mid st ate operated by a university.

For a personal tour, contact us online at lipscombacademy.org

EVERY HOME SHOULD BE A CASTLE

CUSTOM HOMES | REMODELING | INTERIOR DESIGN

SOUTHERN LIVING 2012 CUSTOM BUILDER OF THE YEAR



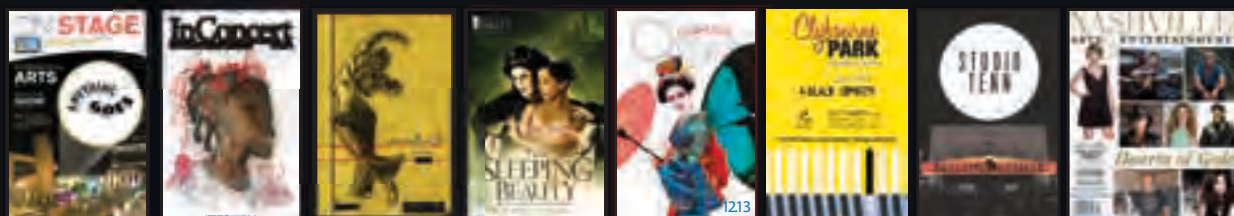
START BUILDING YOUR DREAM HOME
TODAY. VISIT CASTLEHOMES.COM
GUARANTEED PRICING / FREE CONSULTATION

615.309.8200 CASTLEHOMES.COM

Look around the room...

We have a captivated audience that is totally engaged in tonight's "Playbill" publication.

In today's new economy it is more important than ever that your advertising message reaches your target audience!



If you would like more information regarding how your company will benefit from advertising in the TPAC Broadway Series, Schermerhorn InConcept, Great Performances at Vanderbilt, Nashville Ballet, Nashville Opera, Tennessee Repertory Theater, Studio Tenn, and Nashville Arts & Entertainment magazines, please call: 373.6557

www.GloverGroupEntertainment.com • www.NashvilleArtsandEntertainment.com



2012-2013

**SARRATT
GALLERY**
AT VANDERBILT



Ana Serrano, *Carpet Auction*

LESLIE HOLT

PAINTINGS

September 4–28

RECEPTION/TALK: SEPTEMBER 13

STACY PEARSALL

PHOTOGRAPHS

October 1–31

RECEPTION/TALK: OCTOBER 26

PATRICK DEGUIRA

TEXT-BASED WORKS

November 5–27

RECEPTION/TALK: NOVEMBER 8

HOLIDAY ARTS FESTIVAL

November 28–December 10

PRISON GALLERIES:

IMAGINING JUSTICE FROM THE INSIDE OUT

GROUP SHOW

MIXED MEDIA

January 16–February 14

RECEPTION/TALK: JANUARY 21

ANA SERRANO

MIXED MEDIA

February 18–March 25

RECEPTION/TALK: FEBRUARY 21

HUGUETTE DESPAULT MAY

DRAWINGS / PHOTOGRAPHS

April 5–May 15

RECEPTION/TALK: APRIL 5

**RECEPTIONS AND
GALLERY TALKS**

5–6:30 p.m. in Sarratt Gallery

www.vanderbilt.edu/sarrattgallery

VANDERBILT UNIVERSITY

The finest Italian cuisine in town

Business Express Lunches starting at \$7.95



311 3rd Avenue South

one block south of the Schermerhorn Symphony
Center and three blocks south of Broadway

ph 615/256.4013 • fax 726.4936

Lunch: Tue–Sat 11–4

Dinner: Tue–Thur & Sun 4–10, Fri–Sat 4–11; Closed Mon

Reservations Welcome • Valet

www.SoleMioNash.com



**DAVIDSON
ACADEMY**

Preparing students for college, life, and eternity

www.davidsonacademy.com

Preschool–12th Grade

615.860.5300

CULTIVATED PERFORMING ARTS PROGRAM

COMPETITIVE ATHLETICS

COLLEGE-PREP ACADEMICS

CHRIST-CENTERED WORLDVIEW



What is FirstBanking?

It's banking that reaches beyond.

► 45 Locations

► \$2 Billion in Resources

More Than Banking



FirstBanking

www.FirstBankOnline.com



200 4th Ave. North
Downtown Nashville
615.953.4580

113 Seaboard Ln.
Suite 130A – Franklin
615.373.7778

5029 Harpeth Drive
Brentwood
615.324.9440

211 Commerce Street
Suite 300 – Nashville
615-313-0080

Member FDIC

Preschool-12 | Co-Ed | Rigorous Academics | Award-Winning Fine Arts | Competitive Athletics | Christ-Centered Worldview


Where the arts...
Reflect life.
Impact life.
Prepare for life.



CPA Fine Arts 2011-12 Production of Rodgers and Hammerstein's Carousel




Christ Presbyterian Academy www.cpalions.org



Donelson Christian Academy

Developing the whole person into a Christ-like leader in the home, church, and community.



300 Danyacrest Drive • Nashville, TN 37214
(615) 883-2926 • www.dcawildcats.org • SACS Accredited

Give Your Business The Ultimate
JOB SECURITY.



With *Secure Print*, sensitive data can be printed anytime, anywhere in the workplace with the swipe of a card.

Centralize printing.
Lower operating costs.
Secure peace of mind.

RJ YOUNG'S
CHIEF WORKFLOW OFFICER...
securing documents and making your work flow.

innovative document solutions
RJ YOUNG

RJYoung.com/Workflow
(615)255-8551




Scan this QR code with your mobile device to see how





UPCOMING SHOWS

at **NASHVILLE'S HOME** for the performing arts




HCA/TriStar Health
Broadway at TPAC Series:



Presented by 


November 13-18

TM & © 2012 Paramount Pictures and TM & © 2012 The Estate of Irving Berlin. All rights reserved.

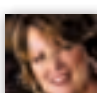


Presented by **RAYMOND JAMES**

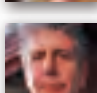
January 22-27



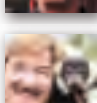
February 19-24



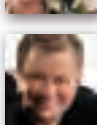
EILEEN IVERS
with Immigrant Soul
October 26



ANTHONY BOURDAIN
November 3



Mutual of Omaha's
WILD KINGDOM
with Peter Gros
December 7



WILLIAM SHATNER
Shatner's World
January 12
AND MORE!

TPAC.ORG/SHOWS
615-782-4040
Groups of 10 or more: 615-782-4060



Strong enough for a man. But made for women and children.

TriStar Women's & Children's network is dedicated to the care of women, children and babies. Whether you are navigating pregnancy, menopause, osteoporosis or cancer - a broad range of specialists are available to meet your needs.

You and your family can count on receiving undivided attention and tailored treatment in any of the TriStar hospitals.



TriStar  **Women's
& Children's** 

Visit Us at TriStarHealth.com





Tennessee
Repertory Theatre

**2012 2013
SEASON**

CLYBOURNE PARK

by Bruce Norris

September 8–22, 2012

Previews: Sept. 6–7

DR. JEKYLL & MR. HYDE

adapted by Jeffrey Hatcher
based on the classic novella
by Robert Louis Stevenson

October 13 – November 3, 2012

Previews: Oct. 11–12

CABARET

book and lyrics by Joe Masteroff & Fred Ebb
music by John Kander

February 16 – March 9, 2013

Previews: Feb. 14–15

THE COLUMNIST

by David Auburn

April 20 – May 4, 2013

Previews: April 18–19

**HOLIDAY SPECIAL
A CHRISTMAS STORY**

Adapted by Phillip Grecian
Based on the motion picture by
Jean Shepherd, Leigh Brown, and Bob Clark

December 1–22, 2012

Previews: Nov. 29–30

Subscribe Today!

tennesseerep.org

or call (615) 782 6560

One might say in our walk of faith, we've been down many paths. But few as exciting as the one we're on now. With hard hats and rolled sleeves, we're building a university that will serve students in greater, more innovative ways than ever in our history. Two new health science buildings providing state-of-the-art facilities for nursing and pharmacy.



In just the past 24 months—16 new graduate programs, with more to come, that meet the demands of today's workforce in fields such as information technology and biomolecular science. And almost 60 new faculty members to help us keep our stride. Watch us as we hammer out our future and take some exciting steps forward.

**TO US, THIS IS A
STEPPING STONE.**



www.lipscomb.edu



Get your life back

At Pinnacle Health, we can help relieve chronic pain and get you back on your feet.

- chronic back pain
- knee and/or hip pain
- tendonitis • shin splints

We also offer **laser therapy** to help you get your life back faster.

These painless, high-powered lasers help relieve chronic pain and stimulate tissue regeneration.



Put pain behind you and enjoy what's important!

pinnaclehealth.biz / 615.656.7900

SALT & LIGHT

Our Christian Artists: Stories that Shine

Graduates of Trevecca's programs in **music, dramatic arts, mass communication,** and **creative writing** find unique ways to become salt and light in their careers, and their individual stories speak volumes about how Christian artists are penetrating the culture.



TREVECCA
NAZARENE UNIVERSITY
where great stories begin

333 Murfreesboro Road
Nashville, TN 37210
615-248-1200
www.trevecca.edu



TPAC is happy to be your **home for the holidays!**



Classic Holiday Shows:

A Christmas Story, November 29 – December 22

Humorist Jean Shepherd's memoir of growing up in the midwest in the 1940s follows 9-year-old Ralphie Parker in his unflappable campaign to get Santa (or anyone else) to give him a Red Rider rifle. The consistent response: "You'll shoot your eye out." All the elements from the beloved motion picture are here, guaranteed to warm the heart and tickle the funny bone.

Nashville's Nutcracker, December 9-23

The beloved holiday tradition of Nashville's Nutcracker, the unique concept and vision of Nashville Ballet Artistic Director Paul Vesterling, returns to the stage with even more dancers and magical characters. Set in Nashville with local historic characters, *Nashville's Nutcracker* takes young Clara on an enchanted adventure with her Nutcracker. The Nashville Symphony performs Tchaikovsky's famous score.

Chase away "after the holiday blues" with Nashville Opera's **Cinderella**, January 25-29. A perfect comic opera for the entire family or your favorite Fairy Godmother!



Festive, Free LookIns:

Come "look in" at what happens before the curtain goes up. Walk into the private world of rehearsal and learn about the creative process of the director, set designer, and costume designer. And it's free!

LookIn: A Christmas Story will be at Tennessee Rep's Rehearsal Hall November 20 at 5:30 p.m.

LookIn: Nashville's Nutcracker will be at Nashville Ballet Studio November 29 at 5:30 p.m.

LookIns are part of TPAC's InsideOut program. For more information on InsideOut, and to find out about other fun events, go to tpac.org/insideout.



Jolly Holiday Music:

Naughty and Nice, December 4

The 100+ voices of Nashville in Harmony will perform a nice mixed bag of musical treats spiked with a handful of naughty surprises. The only chorus in Middle Tennessee for gay, lesbian, bisexual, and transgendered people, and their straight allies, Nashville in Harmony has secured its reputation as a first-tier performance organization in Music City.

Welcome Christmas, December 8

Nashville's premiere men's a cappella barbershop harmony ensemble brings the joy of the holiday season to you in glorious four-part harmony. Combining musical excellence with a mix of the classic American barbershop art form and modern a cappella styles, the Music City Chorus brings a new twist to many of your holiday favorites and a few new ones you may not have heard.



Give the gift of live performance.

tpac.org/gift • 615-782-4040 • TPAC Box Office Downtown



A work of art unto itself, the Nashville Arts & Entertainment Guide is your ultimate source for exclusive interviews, news, and information about the best entertainment the city has to offer. The perfect-bound, annual glossy is a beauty that you'll keep on your coffee table all year-round.

The brand new edition of *Nashville Arts & Entertainment Guide* includes a special feature on TPAC, Nashville Ballet, Nashville Opera, and Tennessee Repertory Theatre. You'll also enjoy celebrity spotlights, from football stars to top musicians who have "Hearts of Gold." The arts, entertainment and cultural landscape in the city has never been more exciting or diverse.

From the performing arts to the Tennessee Titans, the magazine celebrates the creative spirit of a great city.

Get a copy at Barnes & Noble, Hudson News Gift Shops at the airport, Costco, Publix and other finer newsstands in middle Tennessee. The magazine also is distributed by the Nashville Convention and Visitors Bureau and the Tennessee Department of Tourist Development.



Nashville Arts & Entertainment Guide is published by Glover Group Entertainment. For more information about advertising in the performing arts playbills, visit glovergrouppentertainment.com or call 615-373-5557.



"HOPE ALWAYS BELIEVES IN THE POSSIBLE."

—Charles Strobel, Founding Director, Room In The Inn

Room In The Inn and its participating congregations offer emergency shelter and hospitality to individuals struggling with homelessness in Middle Tennessee during the coldest months of the year. In addition, Room In The Inn offers comprehensive services at its 8th Avenue location including educational classes, transitional housing programs, respite care for the medically fragile, Veteran's services, and day shelter. To learn more about how you can help, please call 615-251-9791.

*Paper mosaic created by Room In The Inn day class.
Ad donated by a friend of Room In The Inn.*



WWW.ROOMINTHEINN.ORG



CATCH ME IF YOU CAN

SYNOPSIS: It is 1960 and Frank Abagnale, a young con man, is cornered in the Miami International Airport surrounded by FBI Agent Carl Hanratty and his team. Before Abagnale is arrested, he pleads with Hanratty to give him a chance to explain the reason behind his arrest to the gathered crowd of onlookers. Hanratty feels there is no reason for an explanation, but strikes a deal. If Abagnale is allowed to tell his story, he must include how he passed the bar exam and posed as a lawyer without ever taking a college class. Abagnale promises to tell all, if they allow him to tell his story "Live in Living Color."

Frank's childhood was one filled with struggles. He explains that due to money shortages, he was pulled from the elite school he was accustomed to and placed into a public institute. While there, he continued to wear his prep school jacket as he struggled to find his identity. Fellow students taunted him for looking like a substitute teacher, which seeded an idea in Frank's mind. A few weeks later, his parents were informed that their son had been posing as a substitute teacher for a French class.

Trouble spread as Frank watched his parents' marriage fall apart. Annoyed with his parents fighting over him, Frank tells how he decided to run away to find a new identity. In this new identity, he learned how to create fake checks, cashing them at banks across the country and successfully conning millions of dollars.

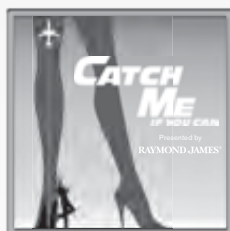
On a trip to New York City, Frank noticed several attractive women around him and discovered they were all stewardesses. In that moment, Frank decided that he would become a pilot. Skipping school and any training required in becoming a pilot, Frank created a fake ID card and found a co-pilot position with Pan American World Airlines. While Frank collected frequent flyer miles, FBI agent Carl Hanratty discovered several fake checks on his desk in Washington D.C. He began to track down the writer of the checks, launching a cat and mouse chase across the nation.

Through each twist and turn of the story, Frank reveals how he was always one mistake away from being caught. With the flash and charisma of color television, Frank sings and dances his way through various life experiences. These experiences, complex and constantly in motion, are ones which allowed him to impersonate a Georgia doctor, a Louisiana prosecutor, a Pan Am pilot and a Lutheran all before the age of twenty-one. As the story draws to a close, Hanratty's question hangs in the air "How did you do it?" The answer . . .

Tickets are on sale now at tpac.org/catchme, by phone at **615-782-4040**, and at the TPAC Box Office, 505 Deaderick Street in downtown Nashville. For groups of 10 or more, call 615-782-4060.

Contains some mature content.

Presented by **RAYMOND JAMES®**



January 22-27, 2013



February 19-24, 2013



March 19-24, 2013



May 7 – June 2, 2013

**See all 4 season shows
for less than \$75!**

tpac.org/broadway or 615-782-6560

PLUS Broadway Specials:

Cathy Rigby is Peter Pan,
Green Day's American Idiot,
and Rock of Ages.

Some shows contain mature content.



MUSIC
al
CITY



BEAUTIFUL. HISTORIC.

All Yours.



Photo: Michael Howard Photography and Big Events Weddings

From JFK to Robert Plant, **War Memorial Auditorium** has hosted historic occasions...*your wedding could be next.* Contact us to book your special event at one of Nashville's truly iconic locations.

MAKE YOUR WEDDING HISTORIC.
tpac.org/weddings • 615-782-4000



Make Your Sunday Special Again

Life can get hectic.

Every day brings things to do and people to talk to. But Sunday is different. Or at least it should be. **Pick up Sunday's Tennessean** for the arts and entertainment news you want inside Portfolio.

Subscribe now at Tennessean.com/subscribe then activate your subscription at Tennessean.com/activate

THE TENNESSEAN

The Songs of Irving Berlin

Here are the first words of eight Irving Berlin songs.
Can you name all of the tunes?

OH! _____

GOD _____

BLUE _____

WHITE _____

EASTER _____

THERE'S _____

PUTTIN' _____

ANYTHING _____

ON

BUSINESS

THE

YOU

AMERICA

HOW

GET

CAN

UP

PARADES

TO

SKIES

NO

BUSINESS

I

HATE

CHRISTMAS

RITZ

DO

IN

BLESS

LIKE

SHOW

MORNING

THE



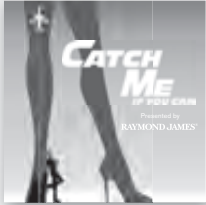
The Tennessee Performing Arts Center is an accessible facility with a variety of services.
For more information, see page 60 of this playbill or visit tpac.org.

Irving Berlin's White Christmas Sunday matinee performance, November 18 –

AMERICAN SIGN LANGUAGE: Beth Moss and Brooke Roy • AUDIO DESCRIPTION: Beth Crabb • OPEN CAPTIONING: c2

You can get great deals on Broadway, concerts, and more!

Does your employer, civic group,
or school offer TPAC discounts?
Contact us to find out.
TPAC has four great programs
that help you save money:



Catch Me If You Can is coming to TPAC January 22-27

This high-flying, splashy new Broadway musical is based on the DreamWorks film and the true story that inspired it. Groups of only 10 or more save dramatically!

tpac.org/groups • 615-782-4060

THANK YOU

to **Irving Berlin's White Christmas** audience members who participated in TPAC's Group Sales programs and purchased tickets by October 30, 2012.

1808 Grille
Abenity
Ad2 Nashville
Adagio Massage Company and Spa
Affinion Group
AFTRA
AIGA Nashville
Alta Loma Apartments
American Airlines
American General
Aquinas College
Asurion
AT&T
Austin Peay State University
Averitt Express
Baker, Donelson, Bearman,
Caldwell & Berkowitz, PC
Bank of America
Baptist RX Express
Bass, Berry & Sims
Battle of Franklin Trust
Belle Meade Framers
Belmont Bruins Basketball
Rewards
Belmont University
Belmont University –
Office of Alumni Relations
Belmont University –
Office of Communications
Bethel Family Academy
Big Brothers Big Sisters
of Middle Tennessee
Blue Cross Blue Shield
BMI
Board Member, Inc.
Butterfly Meadows Inn
CABLE
Caterpillar Financial
Services Corporation
Centennial Healthcare
CMA
CMT / Viacom Media Networks
Cool Springs Galleria
Corrections Corporation of America
Costco Wholesale
Covance
Cracker Barrel
Cushman & Wakefield/Cornerstone
Dan Whetstone
Delek / Mapco
Deloitte & Touche
Diana Rae & Co. Voice School
Dollar General
DoubleTree Downtown Nashville
Education Networks of America, Inc.

Emdeon
EMI Christian Music Group
Every Nation Ministries
F&M Bank
Fairview Baptist Church
Faith Family Medical Clinic
FiftyForward
FiftyForward Martin Senior Center
First Community Mortgage
First United Methodist Church
Fisk University
Flemings Prime Steakhouse
Fontanel Mansion
Fort Campbell
Franklin County High School
Frist Center
Frost Brown Todd, LLC
Gaylord Entertainment
Getaway Magazine
Ghertner & Company
Gibson Musical Instruments
GLBT chamber
Gospel Music Association
Grand Avenue
Haute Salon and Spa
HCA
Healthways
Heather Stephens
Hendersonville Medical Center
Heritage Homeschool Group
Hitlon Nashville Downtown
Home Shopping Network
Homewood Suites
Nashville Downtown
Humane Society
Hutton Hotel
Icon in the Gulch
Ingram Industries, Inc.
iostudio
J.U.M.P
Jackson National Life Insurance
Johnson Controls Incorporated
Judith Sullivan
Judy Bunch
Julie Hullett concierge, LLC
Junior League Murfreesboro
Junior League of Nashville
Kano Laboratories
King & Ballow Law Firm
King Family Medical
Kohl Academy of Performing Arts
Kraft CPAs PLLC
Krista Mouser
Lifestyle Tours
LifeWay Christian Resources

Lipscomb University
Lipscomb University Alumni
Loews Hotels
LP Building Products
Lynn Carpenter
Maggiano's Little Italy
Marriott Courtyard Brentwood
McKendree Village
Merits CSE
Metro Nashville
Metro Nashville Airport Authority
Metropolitan Action Commission
Miller & Martin PLLC
Miss Marisa Hopkins
Mitsui & Co. (USA)
Morton's Steakhouse
Motlow State Community College
Mr. Jasper Tollett
Mrs. Shonta Lamb
Ms. Donna Morgan
Ms. Recca Barwin
Ms. Susan Gifford
MTSU Alumni Relations
Musicians On Call
Nashville Association of
Musicians, AFM Local 257
Nashville Boot Company
Nashville Center for Non Profit
Management
Nashville City Club
Nashville Convention
& Visitors Bureau
Nashville Library
Nashville Library Foundation
Nashville Shared Services Center
Nashville State Community College
Nashville Urban Residents
Association
Nelson Mullins Riley &
Scarborough LLP
Newell Rubbermaid
Nissan (CalsonicKansei
North America, Inc.)
Nissan North America
Nossi College of Art
Nunally Drug Store
Ogletree, Deakins, Nash,
Smoak & Stewart
Ole Miss Alumni Nashville
Association
Omniceil, Inc.
Paris Henry County Arts Council
Pearl Drums
Permanent General Companies, Inc.
Pinnacle Financial
PNC Bank

Proctor & Gamble
Puckett's Grocery
Red Cross
Regions Bank
Sambuca Restaurant
Saturn UAW
Sheer Goodness
Sheraton Nashville Downtown
Signature Transportation
Skyline Medical Center
Southeast Financial Credit Union
Southern Hills Medical Center
Southern Joint Replacement Institute
Sparkfly
STA Travel (ISIC Cardholders)
Staffmark
Stanton Tours
State Farm Insurance
Stock-Yard Restaurant
Stone Crest Medical Center
Suntrust
SweetsNdulgence
Take Care Health Systems
Tennessee Education Lottery
Corporation
Tennessee Latin America
Chamber of Commerce
The Farmers Bank
The Lampo Group
The Standard at the Smith House
Tom James Company
TPAC Education
TPAC Family
TPAC Friends
Trevecca Nazarene University
Union Station
United Way of
Metropolitan Nashville
United Way, Rutherford and
Cannon Counties
University of Phoenix
University School of Nashville
Urban League Young Professionals
of Middle Tennessee
Vanderbilt University
Vanderbilt University School of Law
Watanabe's
West Harpeth Christian Tutorial
Woodmont Hills Homeschool
WWL Vehicle Services Americas, Inc.
Wyndham Worldwide
Xebec Management, Inc. (XMi)
YMCA of Middle Tennessee
Young Professionals of
Nashville Chamber

Visit TPAC bars to enjoy the specialty beverage for Irving Berlin's *White Christmas*,

"The General,"

a merry and bright blend of Ketel One Vodka with white Crème De Menthe and Crème De Cacao.

Center
Landing
Café

TPAC Tastes of
Tennessee



Proudly Featuring:

Bongo Java Roasting Co. (two custom blends for TPAC)

Grab the Gold • Jack Daniel's Tennessee Whiskey

Moose Head Kettle Corn • Nashville Toffee Company

Rae's Gourmet Sandwiches • Sweet 16th a bakery

Tennessee Cheesecake • Yazoo Brewing Company

tpac.org/foodandbeverage

Limited Quantities Available

The Tennessee Performing Arts Center
gratefully acknowledges

2012-13 SPONSORS:

Sustaining Partner:

NISSAN

Broadway Series Title Sponsor:



Official Sponsors:



Presenting Sponsors:

Bank of America



RAYMOND JAMES®

REGIONS® **valspar paint®**

Special Thanks to:





TPAC gratefully acknowledges the following organizations and individuals for gifts and pledges received from November 2011 – November 2012.

These gifts support TPAC Education, performing arts programs, and special projects. For more information about donor benefits and sponsorship opportunities, or to notify us of any errors or omissions, please contact TPAC Development at 615-687-4315.

Board of Directors

C. Dale Allen
Carter Andrews
Emily Barton
Barbara T. Bovender
William H. Braddy, III
John E. Cody
Colleen Conway-Welch
Ronald L. Corbin
Waverly D. Crenshaw, Jr.
Ansel L. Davis
Emanuel J. Eads
Donna G. Eskind
Rod Essig
Charles J. Hall
Martha R. Ingram
Christine Karbowiak
Beverly Keel
Susan Lanigan
Pat Matthews-Juarez, Ph.D.
Dr. Robert H. Ossoff
Anne L. Russell
Jim Schmitz
Larry R. Stessel
Andrew Tavi
Claire W. Tucker
J. Stephen Turner
Dr. Philip Wenk
Uzi Yemin

Government, Corporate, and Foundation Contributors as of November 1, 2012

\$50,000+
Bank of America
The Community Foundation of Middle Tennessee
Corrections Corporation of America
HCA Foundation on behalf of HCA and the TriStar Family of Hospitals
Metro Nashville Arts Commission
Nissan North America, Inc.
The Tennessean
Tennessee Arts Commission
The Walt Disney Company
\$25,000 – \$49,999
American Airlines
Brand Imaging Group
Butler, Snow, O'Mara, Stevens & Cannada, PLLC
Dollar General Literacy Foundation
Grand Avenue
Hard Rock Cafe
Ingram Charitable Fund*
Monell's Dining and Catering
Justin and Valere Potter Foundation
Raymond James
Regions Bank
Sheraton Nashville Downtown
Valspar Paint
Vanderbilt University

\$10,000 – \$24,999
Anonymous
BlueCross BlueShield of Tennessee
Bridgestone Americas Trust Fund
Classic Party Rentals
Coca-Cola Bottling Co
Delek U.S.
Delta Dental of Tennessee
Gannett Foundation
Gaylord Entertainment Foundation
Landis B. Gullett Charitable Lead Annuity Trust
Ingram Industries
IronHorse Farms
The Memorial Foundation
NovaCopy
Novare Digital
Mary C. Ragland Foundation
Waller Lansden Dortch & Davis

\$5,000 – \$9,999
Adams & Reese LLP
AT&T
Baulch Family Foundation
The Broadway League
Brown-Forman
Caterpillar Financial Services Corporation
CLARCOR Foundation
Compass Executives
Corporate Flight Management
Creative Artists Agency
Dollar General Corporation
The Dorothy Cate and Thomas F. Frist Foundation

Ernst & Young LLP
GroupXcel
HCA-Caring for the Community
Lipman Brothers, Inc.
MarketStreet Enterprises
Publix Super Markets Charities
The Rechter Family Fund*
Sargent's Fine Catering
Southern Joint Replacement Institute
SunTrust Bank, Nashville
VSA Arts Tennessee
Washington Foundation
XMI Commercial Real Estate

\$2,500 – \$4,999
Anderson Design Studio, Inc.
Athens Distributing Company
Best Brands, Inc.
CapStar Bank
Central Parking
Community Health Systems
Samuel M. Fleming Foundation
Patricia C. & Thomas F. Frist Designated Fund*
Gaines-Gentry Thoroughbreds
Krispy Kreme Doughnut Corporation
National Endowment for the Arts
Premier Parking / Public Square Garage
Skanska
Irvine and Beverly Small Foundation
South Arts

\$1,500 – \$2,499
The Atticus Trust
Earl Swensson Associates, Inc.
Enterprise Holdings Foundation
Ezell Foundation
I.C. Thomasson Associates Inc.
Jamison Bedding, Inc.

\$500 – \$1,499
Amerigo
Bentley of Nashville
Bradford's Interiors
Central Parking Corporation
Cumberland Trust and Investment Company
EBS Foundation
Elan
Fleet One, LLC
Google, Inc.
Hirtle, Callaghan & Company
Imagine Gallery
Kraft CPAs
Loews Hotels
Mastrapasqua Asset Management
The NewsChannel 5 Network
Ocean Reef Club
Purity Foundation
Rodney Mitchell Salon
Wright Travel Agency

\$250 - \$499
Green Hills YMCA
Millennium Security Services
Nash Trash Tours
Raycom Media, Inc
Sharing Spree
Law Office of Michael K. Williamson

Individual Contributors as of November 1, 2012

Chairman's Circle \$10,000 +
Mr. and Mrs. Jack O. Bovender, Jr.
Eva-Lena and John Cody
Martha R. Ingram
John Menefee
Judy and Steve Turner
Yaara and Uzi Yemin

Producer's Circle \$5,000 – \$9,999
Julie and Dale Allen
Mr. and Mrs. David J. Baulch
Mr. and Mrs. Robert E. Baulch, Jr.
Mr. and Mrs. Robert E. Baulch, III
Mr. and Mrs. John D. Ferguson
Mr. and Mrs. Bill Lynch
Theresa and Albert Menefee
Kathleen and Tim O'Brien
Anne and Joseph Russell
Mr. and Mrs. Ted H. Welch

Applause Society \$1,250 – \$4,999
The Honorable and Mrs. Lamar Alexander
Mr. and Mrs. Craig J. Andreen
Melinda and Jeff Balser
Mr. and Mrs. J. William Blevins
Dr. and Mrs. Frank H. Boehm
Jessica Bracken
Judith and Richard Bracken
William H. Braddy, III
Gary D. Bynum
Jan and Jim Carell
Anthony and Diane Carroccia
Mr. and Mrs. Michael Cartwright
Christopher and Tricia Casa Santa
Anita and Larry Cash
Elizabeth and Jerone Cecelic
Mr. and Mrs. William S. Cochran
J. Chase Cole
Ronald L. and Brenda J. Corbin
Kelly Crockett
Jana and Ansel Davis
Marty and Betty Dickens
Ashley and David Dill
Dr. Peggy S. Duke
Barbara and Emanuel Eads
Wendy and Mark Eddy
Billy and Jamie Eskind
Dr. and Mrs. Jeffrey B. Eskind
Jane and Richard Eskind
Shary and Rod Essig
Robert Evans
Robert Finn and Gary Lingofelter
Beth A. Fortune
Mr. and Mrs. Charles C. Fowler, Jr.
Paula Frizbe
David and Rechelle Glidewell
Diane and Gary Gober
Mr. and Mrs. Joel C. Gordon
Pat and Wayne Halper
Carolyn and Terry Hamby
Becky and Kent Harrell
Carlana and Aubrey Harwell
Mark D. Hensley
Lee Ann and Orrin Ingram

*A fund of the Community Foundation of Middle Tennessee

Rick Isaacson
 Timothy and Stefanie Jakobs
 Craig and Mercy Jaramillo
 Mrs. Victor S. Johnson, Jr.
 Mr. and Mrs. Victor S. Johnson, III
 Susan and Bill Joy
 Ray and Rosemarie Kalil
 Jacqueline Kelly
 Lawrence and Sherrilyn Kenyon
 Lee and Glenda Kraft
 Michael D. and Kimberly M. Law
 The Honorable Thomas
 and Terri Lewis
 Dr. Spencer Madell
 Mr. and Mrs. William Maksymowicz
 Drs. Paul and Pat Matthews-Juarez
 Richard and Sheila McCarty
 Laura and Mark McDonald
 Lynda McGuire and Bill Nobsch
 Mr. and Mrs. Michael Ray
 McWhorter
 Robert and Yin Mericle
 Lisa and Timothy Moore
 Holly Noble
 Dr. and Mrs. Robert H. Ossoff
 Jennifer and Eric Paisley
 Mr. and Mrs. Philip M. Pfeffer
 Mr. and Mrs. Dale W. Polley
 Lori Putnam
 B. Gail Reese
 Mark and Carla Rosenthal
 Dr. Norman Scarborough and Ms.
 Kimberly Hewell
 Dr. and Mrs. Timothy P. Schoettle
 Mark Siedlecki and Erik Broeren
 Sloan Family
 Irvin and Beverly Small
 Debbie and Scott Snoyer
 Mr. and Mrs. James R. Stadler
 Ronnie Steine and Beverly Keel
 Sara and Larry Stessel
 Lauren and Andrew Tavi
 Byron and Aleta Trauger
 Omar Trevino
 Dianne and Tom True
 Claire Whitfield Tucker
 Mr. and Mrs. Cal Turner, III
 Neil and Chris Tyler
 Lyn N. Walker
 Lori Ward
 Dr. and Mrs. Philip A. Wenk
 Mrs. John Warner White
 Dawn Whitelaw
 Donald R. Williams and
 Richard W. Zelek
 Michelle and Anthony Yanis
 Denise and Victor Zirilli

Director's Circle \$700 - \$1,249

Anonymous (2)
 Mr. and Mrs. William F. Andrews
 Peggy Andrews
 James and Lexie Armstrong
 Janet and Earl Bentz
 Laura and Jay Brothers
 Nancy and John Cheadle
 Marjorie and Allen Collins
 Bob Crants
 Chris Cunningham
 John K. Dries
 Mr. and Mrs. Robert D. Eisenstein
 Laurie and Steve Eskind
 Judy and Tom Foster
 Mr. and Mrs. Albert F. Ganier, III
 Jeanne Gavigan
 Alisha Haushalter
 Mari-Kate Hopper
 Bill Knestrick
 Mr. and Mrs. Randolph M. Lagasse
 Darrell Merryman and
 Jennifer Wright

Keith and Deborah Pitts
 Jennifer and Gus Puryear
 Michelle and Jim Schmitz
 Wonnie L. Short
 Joe N. and Brenda Steakley
 The Honorable and Mrs.
 Mike Turner
 Martin Vanek and
 Christine Karbowski
 Paul Vasterling and Jason Facio
 Johnna Watson
 Dr. Joseph Wiecek
 Jerry and Ernie Williams

Performer's Circle \$300 - \$699

Mr. and Mrs. Jeffrey T. Adams
 Linda Albertalli
 Ric and Aly Alessio
 Gay and Laurence Alvarez
 Mr. and Mrs. Carter Andrews
 Dreama Arguello
 Colleen and Beth Atwood
 Evadne and Mark Awh
 C. Nelson Bailey
 Dolores A. Barnett
 Gary Barton
 David and Jill Bauer
 Dana and Martin Bauguess
 Kelley and Lee Beaman
 Betty Beasley and Melissa Ott
 Molly and Thomas Bedell
 Piper and James Bell
 Mr. and Mrs. Irvin Berry
 Joanne Bertone
 Cherry and Richard Bird
 Jamie Blackburn
 Anita and Michael Blackmer
 Allison and Joe Boever
 Mr. and Mrs. Paul Boklage
 Mary Bolte
 Jerry Boswell
 Jean and Dennis Bottorff
 Keith Bowman and James Lassiter
 Dr. and Mrs. Barry W. Brasfield
 Andy Brashier
 Anna and Mark Bright
 Lorrie K. Brouse
 Mr. and Mrs. David H. Brown
 Cari Buckingham
 Mr. and Mrs. Frank M. Bumstead
 Dr. and Mrs. E. James Burton
 James and Annette Butler
 Melvin Butler
 Carol A. Byrd
 Joe Caldwell
 Rich and Judy Callahan
 Russ and Penny Campbell
 Michael and Pamela Carter
 Jeff and Kathy Cartwright
 Paige, Steve, and Kathryn Cates
 Phillipe Chadwick
 Phila D. Chandler
 Gigi Chase
 Mr. and Mrs. Roy E. Claverie, Sr.
 Bryan Clayton and Katelyn Brace
 Bess Clemons
 Mike Clutts
 Kathy Cockshaw
 Jerry and Yvonne Collier
 Sam and Debbie Collins
 Nancy Cooke
 Joel and Rebecca Cooper
 Virginia Hixon Corbitt
 Kerry and Lisa Couch
 Danna Cox
 Waverly Crenshaw
 Dr. Jeanette Crosswhite
 Mr. and Mrs. James A. Croy
 Kevin and Mitzi Curlee
 Robert and Ruth Darula

Visit the
Art+o+mat®

**Located on Center Landing
 between Jackson and Polk lobbies.**

*A portion of Art-O-Mat proceeds goes directly
 to TPAC's educational and cultural programs.*

\$5 The Art*O*Mat accepts
One \$5 Bill or Five \$1 Bills



WWW.ARTOMAT.ORG

Please RECYCLE Plastic Bottles *and* Playbills

TPAC invites you to *take home one*
 playbill for the family and *recycle the other*.
TPAC playbills are online at tpac.org/onstage.

Recycling containers for plastics and paper also
 are located along beautiful **Deaderick Street**,
 the first certified green street in Tennessee.



Extremely proud of their musicianship and professionalism,
 we appreciate our ongoing relationship with the Nashville Association
 of Musicians, AFM Local 257, to incorporate local artists into the
 shows touring to TPAC. AFM Local 257 was founded in 1902 and
 currently represents over 2,600 of Music City's finest musicians,
 including the Nashville Symphony, studio players, road musicians,
 singer/songwriters, arrangers, and producers. www.afm257.org

Jenifer DeLoach and Wesley Weeks
 George deZevallos
 Tim and Tiffany Dodge
 Kathy Duke
 Bill and Linda Duncan
 Ernest and Mitzi Dunkley
 Pamela and David Duquette
 Stevan and Vicky Ecken
 Betty Eliassen
 Mr. and Mrs. J. D. Elliott
 Annette S. Eskind
 Kristin and Matthew Faier
 Holly and Andrew Feris
 Virginia Fontanella
 Dr. and Mrs. Stephen Fortunato
 Monte S. Frankenfield
 Dr. and Mrs. Daniel C. Geddie
 Mr. and Mrs. Don Gill
 William E. Golab
 Barry W. Goley and Grant W. Goodman
 William and Kathy Gracey
 Adam and Ruth Graveno
 David B. Gray
 Don Gray
 Dr. Mark T. Greene
 Mr. and Mrs. Luke Gregory
 Lee and Michael Gryll
 Cathy Guenther
 Mr. and Mrs. Clinton Bird Gwin
 Donna and John Hagan
 Elizabeth Hall
 Kevin Hanscomb
 Mr. and Mrs. Michael J. Harbers
 Kelly Harter
 Michelle W. Haynes
 Dr. and Mrs. Hugh L. Head, III
 Jim Hearn
 Stephen and Emily Heffington
 Nicole Helm
 Tammy Helms
 Arthur and Loyda Henderson
 Mr. and Mrs. Kevin R. Hennessy
 Richard Hensley
 Mark Herrman
 Nancy Hershkwitz
 Greg and Becca Hollis
 Jeff and Ashley Hollis
 Deborah and Donald Holmes
 Joan Howard
 Dr. and Mrs. Richard A. Howerton
 Patricia and Dennis Huffer
 Melissa and Douglas Hunter
 Mr. and Mrs. Shandy Husmann
 Dana Moore and Jack Isenhour
 Rachel Jackson
 David and Michelle James
 Elizabeth R. James
 Mr. and Mrs. Gregory K. James
 Fred and Kathy Johnson
 Julia and Walt Johnson
 Jay Joyner
 Lisa Kenney
 Teresa Kersey
 George and Sue Kettle
 Nicholas Kilen
 Judy and Herb Knopp
 Stan and Cindy Knott
 Janet and James Knox
 Debra and James Kovanda
 Kenneth Kraft and Lucilyn Crow
 Diane Kruse
 Jeff and Pam Kuhn
 Edd and Nancy Lancaster
 Dr. Robert P. Landsberg
 Robert Lane and Emily Vandiver
 Susan and Greg Lanigan
 Timothy Larson
 Russell G. Latimer

Laura and Robert Ledlow
 Mr. and Mrs. John I. Lillie, Jr.
 Rhonda and Danny Long
 Tracy Lyda and David Greenbaum
 George and Cathy Lynch
 Nancy MacLean
 Donna and Donald Mann
 Randall McCathren
 Juli and David McCay
 Marcus McKamey
 Lori McVey
 Mitzi and Rick Michaelson, Jr.
 Dr. Donald E. Milner
 Mr. and Mrs. David Minnigan
 Jeffrey Mobley
 Tom and Vicki Moon
 Janice B. Moore
 Joann Morris
 Mr. and Mrs. John Muchukot
 Teresa and Mike Nacarato
 Mr. and Mrs. Jack Nadeau
 Merissa Newton
 Agatha Nolen
 Laura and Vincent Nord
 Melva Nunnery
 Jeff and Meghan Owen
 David and Pamela Palmer
 J. Russell and Phyllis Parkes
 Brian Patton
 Nancy and Mark Peacock
 Martha Petty
 Rose and Kip Pierce
 Linda and Tim Priddy
 Patricia and Douglas Ralls
 Elizabeth and Nancy Rankin
 Sibyl Reagan
 Diane Honda and David Reiland
 Mrs. Lou E. Rhoades
 Joshua Riddell and Elizabeth Rowland-Riddell
 Paul and Marjorie Ridge
 Mark and Hye Robbins
 Charlotte Roberts
 Regina Roberts
 Evelyn and William Rodgers
 Daniel and Suzanne Roke
 Patricia and Craig Rothschild
 Mary Rudy
 The Runyeons
 David Sampsell
 John and Debbie Scannapieco
 Jean and Stuart Schmidt
 Susan Schuchard
 Moneta and Herb Schumaker
 Sherra M. Schwartz
 Pat and Marty Schweinhart
 Sharon and William Schweinhart
 Carol and Alvin Scott
 Ken and Marilyn Scott
 Richard Sebastian
 Kelly and Kevin Sekutski
 Jeanne Sellars
 Sharon and Bill Sheriff
 Dr. Charles Sidberry
 Melanie M. Simon
 Helen Sirett and Ken Hendrix
 Mr. and Mrs. Thomas S. Smith
 Dr. and Mrs. Peter L. Sonkin
 Chris and Patrick Sowada
 Mike and Dana Spitzer
 William and Brenda Squires
 Robert and Jane Stammer
 Judy Steele
 Kelly and Charles Stewart
 Joy Strange
 Brenda Swift
 Doris R. Taft
 Alice and Dennis Taunton
 Dr. and Mrs. F. William Taylor
 Janet Taylor

Carlos Tirres
 Mr. and Mrs. G. Marshall Trammell, Jr.
 Barbara and Rick Turner
 James and Melinda Turner
 Frances Anne Varallo
 Michael Verble
 Mary Wade
 Ronald E. Wade
 Fred Walker, Jr. and June Cortner
 Dr. and Mrs. Bill Wall, III
 Richard Walters
 Cheryl and John Waltko
 David Watson
 Dr. J.J. Wendel
 Christopher S. West
 Eleanor Whitworth
 Bradley and Susan Widmann
 Dr. and Mrs. J. Kenneth Williams
 Jennifer Wood
 Margaret and Ron Wright
 Kathryn and James Wynalek
 Sharon Yates
 Kelly and Steven Yokley
 Bill and Jane Young
 William D. Young
 Mr. and Mrs. Julian A. Zander, Jr.
 Theresa Zuckowsky

Patrons

\$100 - \$299

Kathleen and Douglas Airhart
 Edgar and Kathi Allen
 Lorraine Ardaiz
 Leigh Ashford
 Arthur Bartlett
 Emily Barton
 Curtis Beasley
 Dr. Charles Beauchamp
 Diane Becker
 Reverend Debra Berry
 Mr. and Mrs. Peter F. Bird
 Charles and Pam Bridges
 Eric and Sue Broder
 Mr. and Mrs. Martin S. Brown, Jr.
 Janice Buchanan
 Mr. and Mrs. Andrew W. Byrd
 Becky Cagle
 Mrs. Monroe J. Carell, Jr.**
 Raquel Carvalho
 Ted Clayton
 Mr. and Mrs. Charles W. Cook, Jr.
 Susan Cox
 Beth Crabb
 Trish Crist
 Dr. and Mrs. J. Lucian Davis
 Anita and James Davis
 Roy and Julia Dehart
 Donna Dement
 Lee Lee and Wally Dietz
 Kathy Doman
 Patricia J. Dorsett
 Pam and Tim Dubois
 Catherine M. Duffy
 Carol and Mike Dye
 Mr. and Mrs. Thomas S. Edmondson, Sr.
 Mr. and Mrs. Mark Emkes
 Olivia and Bruce Evans
 Janice N. Evers
 Cherrie Farnette
 Karen and David Ford
 Lynn Forte
 Jessie and Carolyn Foster
 Joan and Dick Fox
 Mr. and Mrs. Steven B. Franklin
 Althea Gill
 John F. Gregory, III
 Mr. and Mrs. G. T. Guthrie
 Dixie Heagy
 Mr. and Mrs. Douglas C. H. Henry
 Sam Hirshberg
 Martha Hooper
 Joan Z. Hornberger
 Donna and Michael Horton
 Helen R. Houston
 Melissa Irvin
 Todd and Emily Blake Jackson
 Robert and Lisa Jarman
 Sandra Koczwarra
 Sarbjee S. Kumar, MD
 Sharon H. Lassiter
 William H. Lassiter, Jr.
 Reverend and Mrs. Gary D. Lawson, Sr.
 Mrs. Douglas E. Leach
 Johnny and Alice Lindahl
 Richard and Theresa Lisella
 Shirley Malchow and Molly McGill
 Walter D. Marianelli
 Marilyn Martin
 Mrs. Jack C. Massey**
 Estelle S. May
 Sissy and Michael McDuffee
 Mr. and Mrs. Pat McGuigan
 Kevin Monroe
 Dale and Deborah Mosley
 Richard and Christina Murray
 Lenore Oldham
 Sergio Ora
 Julie Owens
 Mr. and Mrs. Todd E. Panther
 Kathryn Pillow
 Paul M. Pitt
 Liz M. Potocsnak
 Jill and Tracy Prentice
 Mr. and Mrs. Lewis C. Price
 Cora Proctor
 Albert and Jeanie Randall
 Steve and Lee Ann Rice
 Ann V. Roberts
 Judith R. Roney
 Brenda and Bobby Rosenblum
 Mace and Joyce Rothenberg
 J. R. Rudd
 Cheryl Rudnicke
 Jack Savage
 Mr. and Mrs. Andrew Schwarcz
 Elizabeth Sellers
 Brian Shapiro
 Carol Sletto
 Mr. and Mrs. Jonathan C. Stewart
 Janet Thomas
 Mrs. DeWitt C. Thompson, III
 Gloria F. Thurman
 Edward Tietgens
 Mr. and Mrs. George B. Tomlin
 Omar Trevino
 Paul and Diana Rae Uhrig
 Eric Vai
 Marty Vaughn
 Mr. and Mrs. Bart E. Verhulst
 Betty J. Vernon
 Terra Vinet
 Darrell Waltrip
 Rhonda and Ken Weaver
 Kenneth and Julia Weiss
 Emily Whitson
 Pam Whitson
 Pam L. Williams
 Irene and Ridley Wills
 Mr. and Mrs. Ridley Wills, III
 Dallas and Fleming Wilt
 Joyce Wood
 Betty W. Zeni

**TPAC honors the memory of our deceased donors



PATEK PHILIPPE
GENEVE

Begin your own tradition.



You never actually own a Patek Philippe.
You merely take care of it for the next generation.

E. Sain
JEWELERS

In Green Hills at The Hill Center • Suite 305
615-385-1212 • ejsain.com



Annual Calendar Ref. 5205G

Bradshaw
Collision Repair
is now...



AUTO BODY & GLASS

**America's Most
Recommended**

Downtown Nashville

Franklin

Gallatin

Madison

Murfreesboro

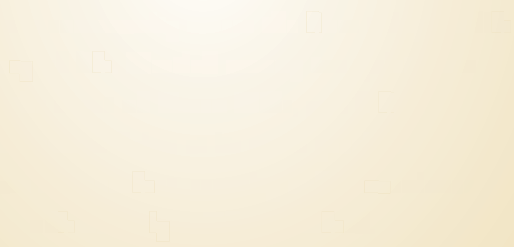
www.abraauto.com

1-888-USA-ABRA



AD161May12

2 . . 3 . I 2 3
 . 5 . 2 .



Blakeford
AT GREEN HILLS

IN THE FUTURE YOU'LL HAVE AN
AMAZING WEBSITE



CALL US TODAY

BECAUSE TOMORROW
IS THE FUTURE
AND
WE PROBABLY NEED TO GET STARTED

615.370.1530

ICGLINK

www.ICGLINK.com

IT'S NOT JUST A MAP.



IT'S a vote OF CONFIDENCE.

Families have relocated from 26 states and six foreign countries, citing Currey Ingram Academy as a major factor in their decision to move to this area. We offer individualized learning plans for every student and a robust host of athletics, arts and extracurricular activities all on a beautiful 83¹/₂ acre campus in the heart of Brentwood, Tenn.



**Find out more at
currey Ingram Academy.org/thedifference**

A coed, K¹² college preparatory school that celebrates individuality, student strengths and personalized goal¹/₂ setting.



We're Listening

capstarbank.com

Member FDIC



Build a Customized Drees Home Anywhere.



DESIGN
GALLERY
HOMES
by Drees

Whether you already own a lot, need help finding a site, or have a particular property in mind, Design Gallery Homes makes it easy to build a customized home anywhere you want to live.

- Firm contract pricing
- Save thousands with no construction loan
- One stop selections process
- Formal follow-up program

**Homes from the \$200s to the
\$800s plus home site**

For a free lot evaluation,
or to learn more, call
(615) 376-9498

dreesonyourlot.com



©2012 Drees Premier Homes, Inc. All Rights Reserved.





FROM SCHOOL OF MUSIC TO MUSIC ROW

Belmont junior and commercial music major Rayvon Owen performed in Belmont's 2012 Commercial Music Showcase and played the role of Seaweed in Belmont's production of "Hairspray." He is also a member of the ensemble Phoenix and currently writing new material for his upcoming EP. With the church as his musical foundation, Rayvon strives to reflect the character of Christ. A Christian, musician and seeking positive growth at every opportunity: this is how Rayvon is Belmont.

beBELMONT.com

SCHOOL of MUSIC

Bachelor of Arts
Major in Music

Bachelor of Music
Majors in Church Music,
Commercial Music,
Composition, Music Education,
Music with an Outside Minor,
Music Theory, Musical Theatre,
Performance and Piano Pedagogy

Bachelor of Fine Arts
Major in Musical Theatre

Master of Music
Majors in Church Music,
Commercial Music,
Composition, Music Education,
Pedagogy and Performance

DEPARTMENT of ART

Bachelor of Arts
Majors in Art and Art History

Bachelor of Fine Arts
Majors in Art Education,
Design Communications
and Studio Art

DEPARTMENT of THEATRE & DANCE

Bachelor of Arts
Major in Theatre and Drama

Bachelor of Fine Arts
Majors in Theatre with an
emphasis in Performance,
Directing, Production Design
or Theatre Education
Minor in Dance



**BELMONT
UNIVERSITY**

For more information,
contact the CVPA Office:
(615) 460-6408 or
WWW.BELMONT.EDU/CVPA/MAJORS



**O'MORE
COLLEGE
OF DESIGN**

**A World - Class
Design College in
Historic Downtown
Franklin**

www.omorecollege.edu
615.794.4254

Founded in 1970, O'More College of Design is a four-year, not-for-profit college awarding Bachelor of Fine Arts degrees in Fashion Design, Interior Design and Visual Communications.

Academic Excellence • Passion for Christ • Leadership Development



**St. Paul
Christian
ACADEMY**

PreK-6th | Located in Green Hills | 615.269.4751
stpaulchristianacademy.org



25 Years Strong

CLC provides a foundation to equip men to be strong Christian leaders in their respective homes, churches, communities and the marketplace.



For Additional Information
visit our website at:
www.christianleadershipconcepts.org



THE WEBB SCHOOL

The Character of Home

Creative EXPRESSION

Passionate LEARNERS

Strong fine arts emphasis in
studio art, music and theatre

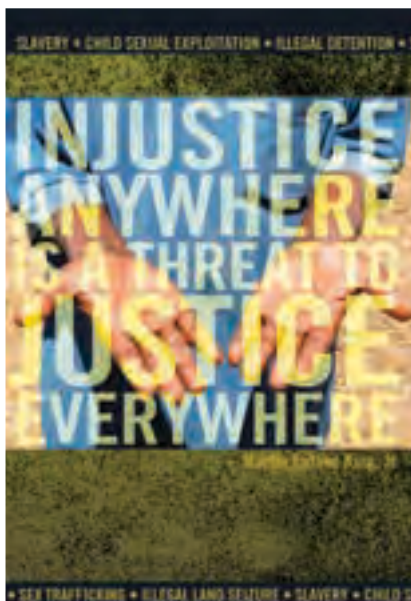
1 of 50 U.S. high schools selected for
the 2011 Fringe Festival, Edinburgh, Scotland.

Webb is a co-ed day / boarding school for grades 6-12.

1-888-733-9322 www.TheWebbSchool.com

5-day boarding and daily bus service available from Murfreesboro

The Webb School welcomes applicants of all races, religions, creeds or ethnic origins.



SLAVERY • CHILD SEXUAL EXPLOITATION • ILLEGAL DETENTION •

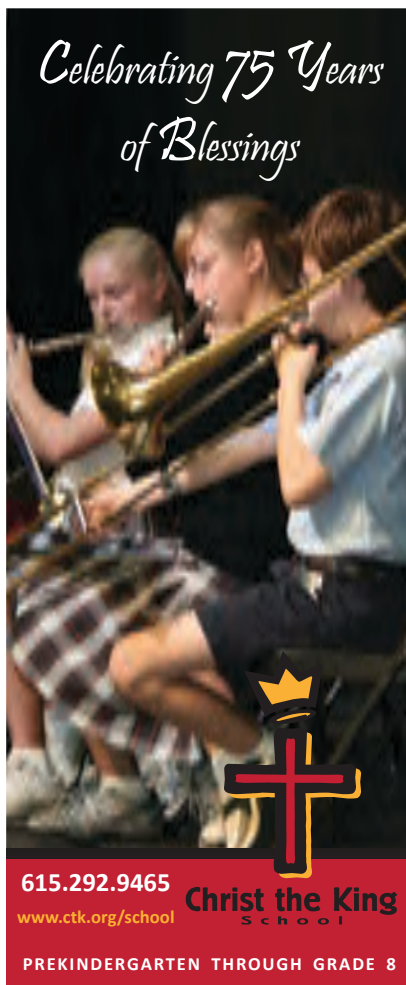
INJUSTICE ANYWHERE IS A THREAT TO JUSTICE EVERYWHERE

SLAVERY • CHILD SEXUAL EXPLOITATION • ILLEGAL DETENTION •


SEX TRAFFICKING • ILLEGAL LAND SEIZURE • SLAVERY • CHILD

The global poor deserve access to the
protections of their own justice systems.
You can help us make it happen.

www.ijm.org



Celebrating 75 Years of Blessings



615.292.9465
www.ctk.org/school

**Christ the King
School**

PREKINDERGARTEN THROUGH GRADE 8



Old Natchez

1882



Old Natchez Country Club is a beautiful
venue for many social occasions such as:

- * Wedding Receptions
- * Rehearsal Dinners
- * Bridesmaid Luncheons
- * Holiday Parties
- * Fundraising Gala's
- * Corporate and Charitable Golf Outings

Our central location in Williamson County along
with the beauty of the setting and first class
service make Old Natchez Country Club
the ideal venue for your special event.

115 Gardengate Drive, Franklin, TN 37069
615-373-5200 • www.oldnatchezcc.com



Lee Smoot / TIS ProShot Photography

COMMITTED TO



EXCELLENCE

... teaching excellence in the arts through
The Fine Arts Academy at EHCS

EZELL-HARDING CHRISTIAN SCHOOL

www.ezellharding.com

"I AM A MEMBER."

ART, MUSIC, FILM & MORE. JOIN TODAY.

Join the Frist today — being a member truly is a great value. Whether you visit us a lot or just a little, come alone or with the whole family, there's a Frist membership for everyone. To join or for more information, visit fristcenter.org/membership.

Frist Center for the Visual Arts • Downtown Nashville
fristcenter.org • 615-244-3340

THE FRIST
CENTER FOR THE VISUAL ARTS



The difference is one degree.



You're just one degree away from a life-changing career move with a graduate degree from Lipscomb University's Graduate School of Business.

Call (615) 966-1833, or go to onedegreeaway.lipscomb.edu

MBA / Professional MBA

Master of Accountancy / Master of Human Resources



Beautiful
NATURAL RESULTS
Outstanding
PATIENT CARE
Enhancing
YOUR SELF-IMAGE



 **THE LETT CENTER**
Aesthetic & Reconstructive Surgery
& Medi-Spa

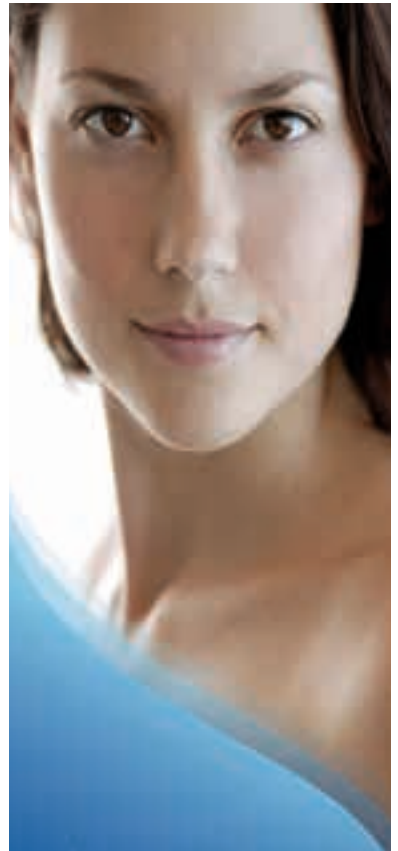
1417 Baddour Parkway, Suite A
Lebanon, Tennessee
(615) 443-0901 • TheLettCenter.com

**Don't
Just Watch
Great Art.**

Taste It.



Performances nightly
at **50** local restaurants.
NashvilleOriginals.com



 **SKIN SOLUTIONS**
Dermatology & Skin Cancer Surgery, PC

NEW Nashville Location
615.224.2665

Julie Pena, MD
Board Certified Dermatologist
Michelle Dobson, MMS, PA-C

*We are dedicated to
skin cancer awareness.*
Call to schedule your
annual full-body exam.

6606 Charlotte Pike, Suite 106
Nashville, Tennessee 37209
(Behind Firehouse Subs)

www.ssdermandlaser.com

PRESIDENT. HERO.
ROCKSTAR.



Hermitage

www.thehermitage.com



Come see the new
Goodpasture, and
THE JOY OF
Creativity!



GCS
GOODPASTURE
Christian School

619 Due West Ave.
Madison, TN
Ph: 868-2600, Ext. 212
www.goodpasture.org



*With each turn of
the fondue fork, a little
romance stirs as well.*



*Welcome to the
FONDUE EFFECT*

The Melting Pot
a fondue restaurant

RESERVATIONS RECOMMENDED
HISTORIC SECOND AVENUE, NASHVILLE
(615) 742-4970 • MELTINGPOT.COM



Encore

Experience luxury that inspires applause



*Ideal for football trips, corporate outings, weddings,
races, wine tasting tours, proms & family vacations.*

premieretransportation.com
615 296 9000



PREMIERE
TRANSPORTATION

ATKINSON REMODELING AND SERVICES

Serving Nashville for 18 Years
KITCHENS, BATHS & MORE



Major Home Renovations,
Custom In-House Designs

YOUR TURN-KEY
RENOVATION COMPANY

615.297.7047

4219 Hillsboro Rd. Suite 200
Nashville, TN 37215

www.remodelingnashville.com

Building a Foundation for the Arts



THE COVENANT SCHOOL

Excellence in Christian Education

JR. KINDERGARTEN - 6TH GRADE



33 Burton Hills Blvd.
Nashville, TN 37215
615.467.2313

www.thecovenantschool.com



ENSWORTH

where ideas live and breathe

COME VISIT!

Middle School Visit Night
Nov. 8th at 6:30pm

High School Visit Day
Nov. 11th at 2:00pm

Ensworth School
Grades P1-12
615.250.8916



ensworth.com

Hunger to Hope

THE MEALS YOU PROVIDE
HAVE THE POWER TO
CHANGE A LIFE.

WWW.NASHVILLEESCUEMISSION.ORG



NASHVILLE
RESCUE MISSION

The Ultimate Guide to Arts & Entertainment in Nashville

NASHVILLE
ARTS & ENTERTAINMENT ANNUAL GUIDE



TITANS: FAITH, FAMILY & FOOTBALL
MIKE WOLFE'S "AMERICAN PICKERS"
MOST INTERESTING PEOPLE • PLACES • THINGS
GIVE IT A SWIRL: WAYS TO DISCOVER TENNESSEE WINES
WHAT BIG SHOW? NASHVILLE
NASHVILLE'S HOLIDAY

Hearts of Gold



ON SALE NOW!

For more information visit us online at: www.NashvilleArtsandEntertainment.com
and follow us on Twitter and Facebook

A Glover Group Entertainment Production
5123 Virginia Way, Brentwood, TN 37027 : 615.373.5557
www.GloverGroupEntertainment.com



Lend a Hand, Buy the Foot!

You can help build a house right here in Middle Tennessee with your tax-deductible donation of \$55 — the cost of one square foot in a Habitat for Humanity home.

Scan our code, or visit us online at HabitatNashville.org/buy-the-foot.



615-254-HOME (4663)

You support the arts we support the artist

After losing her son, Celeste began to write poetry to help her cope with her grief. Celeste finds comfort in her words and comfort at her job.

When you give to Goodwill, you give Celeste a voice. The simple act of donating the things that you no longer need means job training and opportunities for thousands of Tennesseans who have difficulty finding employment.

**Donate Today and
Change a Life.**



**SCAN TO WATCH
CELESTE & OUR
OTHER ARTISTS**



giveit2goodwill.org





Great Memories are Better when Shared

Sheraton is where friends gather. Make Sheraton a memorable part of your next cultural experience with dinner in Speakers Bistro before the show, or cocktails in Sessions Lounge after the curtain falls.

enjoy our superb cuisine, elegant décor, drink specials and much more

Call 615 259 2000 for Reservations

spg.

Starwood Preferred Guest

MERIDIEN

loft

THE LUXURY COLLECTION

WESTIN

FOUR POINTS



©2011 Starwood Hotels & Resorts Worldwide, Inc. All Rights Reserved. Sheraton and its logo are the trademarks of Starwood Hotels & Resorts Worldwide, Inc., or its affiliates.



, - (,) .
0
1 2

Create. Deliver. Engage.

Touchscreen, Digital Signage, & Advertising Solutions



Engage Your Audience



Deliver Your Creative Message



Focus Your Branding

Touch Screen Q

Innovative Applications for Banks, Retail, Healthcare, Colleges & Universities

Let Us Show You How to Monetize Touch Screen Technology

www.TouchScreenQ.com

Call 615-480-3563

SCHOOL OF NASHVILLE BALLET

Nashville | Brentwood



**DANCE
MUSIC
CREATIVITY
AND FUN**
DANCE CLASSES FOR
AGES 2 AND UP
TWO LOCATIONS WITH CLASSES
ON WEEKDAYS AND WEEKENDS.

CHILDREN'S PROGRAM CLASSES
MOMMY AND ME: AGES 2+
JOY OF DANCE: AGES 3+
CREATIVE MOVEMENT: AGES 4+
PRE-BALLET: AGES 5+

REGISTER ONLINE AT
NASHVILLEBALLET.COM
OR CALL (615) 297-2966 x33

Nashville Campus: 3630 Redmon Street
Nashville, TN 37209
(615) 297-2966 x33
Brentwood Campus: 500 Wilson Pike Circle
Brentwood, TN 37027
(615) 861-6660

Sponsored by
TOA
**NASHVILLE
BALLET**
PAUL DIETERLING, Artistic Director

EDUCATING SCHOLARS WITH INTEGRITY AND BALANCE

franklinroadacademy.com • 615.832.8845

FRANKLIN ROAD ACADEMY

Where
Children
Are At Home
With The Arts

PREKINDERGARTEN THROUGH GRADE 12

Visit NowPlayingNashville.com to find comprehensive event listings for
MUSIC, THEATRE, ARTS, SPORTS, FESTIVALS, FREE EVENTS,
KIDS & FAMILY ACTIVITIES, and more. DISCOUNT TICKET OFFERS
and EXCLUSIVE GIVEAWAYS are also a click away!

NowPlaying Nashville.com

WHERE TO GO ... WHAT TO DO

Join the family!    



Nashville & Middle Tennessee's Ultimate Guide
to Arts & Entertainment Events is an initiative of
The Community Foundation of Middle Tennessee

Think globally. Print locally.



As one of middle Tennessee's oldest printers, our roots run deep. Not just in the local community, but across the globe. After all, we're part of a nationwide network of commercial printers. But more than that, we're also participants in the worldwide movement to sustain the planet. In fact, we recently became the first full-service commercial printer in Nashville to be certified by the Forest Stewardship Council.

**Now one of the areas most trusted companies is one of the most ecologically responsible, too.
McQuiddy Printing.**

711 Spence Lane, Nashville, TN 37217 (615) 366-6565 or (800) 882-4444 www.mcquiddy.com

**"The true meaning of life is to
plant trees under whose shade
you do not expect to sit."**

— Nelson Henderson

Children are starving.

From South America to Africa...

No food today means no hope
for tomorrow.

Choose to make a difference.

YOU can save a child's life
today.

YOU can give him hope for
tomorrow.

Please help us help them.

Just Hope
INTERNATIONAL



Visit us at www.JustHopeInternational.org
PO Box 2088 • Brentwood, Tennessee 37024



show HOPE™

A Movement To Care For Orphans

**"GABRIEL DOES
NOT HAVE TO
REMAIN AN
ORPHAN."**



**BECOME A
SHOW HOPE
SPONSOR**

**FOR \$35 A MONTH YOU'LL HELP
GIVE ORPHANS A LIFETIME OF LOVE.**

WWW.SHOWHOPE.ORG

STUDIO TENN

2012-2013 SEASON AT THE FRANKLIN THEATRE

SEPT 2012

SMOKEY JOE'S CAFE

OCT 2012

12 ANGRY MEN

DEC 2012

A CHRISTMAS CAROL

FEB 2013

BIG RIVER

MAY 2013

MY FAIR LADY

SAVE 20%
WHEN YOU BUY
SEASON TICKETS

AVAILABLE AT
THE FRANKLIN THEATRE BOX OFFICE
FRANKLINTHEATRE.ORG
OR STUDIO TENN.COM

STUDIO
TENN

TPAC FACILITY INFORMATION

Accessibility Services at TPAC include parking, elevators, wheelchair seating, use of a TPAC wheelchair, designated restrooms, and services for hearing and visually impaired patrons. Infrared assisted listening devices are available at no charge at the entrance to each theater. TPAC offers signing for hearing impaired patrons, and audio description and Braille programs for blind and visually impaired patrons on the Sunday matinee in the HCA/TriStar Health Broadway at TPAC Series. Large print programs are available for Broadway and TPAC Presents shows. Special accessibility requests and concerns, excluding assisted listening headsets, should be discussed in advance with the TPAC House Manager at 615-782-4087. Reservations for a wheelchair should be made on the day of performance.

Restrooms for Jackson Hall are located one level down from the 6th Avenue entrance, in the halls behind the seats in the tier and balcony, and downstairs in the back of the orchestra level. Restrooms for Polk Theater are located down the stairs to the left of the entrance to the orchestra level and on the balcony level.

All electronic devices including cell phones, pagers, watch alarms, cameras, and recorders should be turned off prior to the performance or checked-in with the floor manager or an usher, who will note the seating location of physicians and others who expect emergency calls.

Call Lost and Found at 615-782-4098 to report an item you might have left at TPAC.

In case of an emergency, the number to leave with others is 615-782-4000 (along with performance, theater, and seat location).

Smoking is permitted outside the building.

Concerns or compliments?
e-mail patronservices@tpac.org

YOU HAVE MORE CHOICES THAN YOU THINK

Hope Clinic for Women provides women and men with a safe environment for medical care, counsel, and practical support. With most services free of charge, we rely on your generosity to help us grow!

Ask us about:

- Volunteer opportunities
- In kind donations
- Financial support opportunities
- Open Houses

www.hopeclinicforwomen.org



hopeclinic
for women
a Safe Place for Tough Choices

Established in 1983 and equipping women, men and families to make healthy choices with unplanned pregnancies, prevention, pregnancy loss and postpartum depression.



FACILITY INFORMATION

Location The Ingram Center for Performing Arts is located at the corner of 24th Avenue and Capers Avenue.

Late Arrivals Late arrivals will be seated only at times designated by the artists and/or company. Please consult ushers stationed at the entrances of the orchestra level.

Discounted Parking

Discounted parking for Ingram events is available in the Capers Avenue Garage at the corner of 24th Avenue and Capers Avenue. Please show ticket stubs when exiting.

No Smoking There is no smoking allowed in any building on University campus.

Restrooms In the Ingram Center, restrooms are located in the rear of the lobby area.

Accessibility Wheelchair accessible seating, restroom and radio frequency assistive hearing devices are available in Ingram Hall. Please call 322-2471 at least three days in advance of the performance date to make arrangements for all special needs.

Lost and Found Please call University Security at 322-2745.



SHIFT_

NISSAN
ALTIMA®

- 38 MPG HWY¹
- Better Acceleration than Camry and Accord²
- All-new Xtronic® CVT Transmission

INNOVATION. IT'S WHAT WE DO IN NASHVILLE.

Music and Nashville have constantly inspired each other. Every style of music stops by Nashville and becomes something better than it was before. That's why Nissan is a proud sponsor of the arts. The innovation that inspires the artists of Nashville is something that we're proud to support. Because it's that same spirit we've put into our most innovative year ever, with the launch of a whole new generation of Altima, Pathfinder® and Sentra®. Something we think you'll feel when you're behind the wheel.

Nissan. Innovation that excites.™



¹2013 projected EPA estimate of 38 MPG highway for Altima 2.5S. Actual mileage may vary with driving conditions – use for comparison only. ²AMCI Testing Certified: Better Overall Acceleration Performance, 2013 Nissan Altima 2.5 SV vs. comparably equipped 2012 Ford Fusion SE, 2012 Honda Accord SE, 2013 Hyundai Sonata SE and 2012 Toyota Camry SE. Always wear your seat belt, and please don't drink and drive. ©2012 Nissan North America, Inc.





TACORI

Genesis Diamonds



The Official Jeweler of the Tennessee Titans



Cool Springs, TN, (615) 371-6765 | Green Hills, TN, (615) 269-6996 | St. Matthews, KY, (502) 891-0424

www.GenesisDiamonds.net