



INSPIRE
CELEBRATE
EXPRESS
CHALLENGE
FIND
YOURSELF
AT TPAC

CENTER
STAGE

NOW PLAYING
at TPAC
starts on page 15

LEARNING
Comes to Life
pages 11-14

We THANK
our Donors
pages 48-50

COMING SOON
to TPAC
page 51



The Original Television Classic Comes To Life!

December 16-21, 2014





GRAND[™]
AVENUE

BE DRIVEN



Grand Avenue takes me everywhere.

— DON MACLACHLAN

Tennessee Titans,
Executive Vice President

One Contact. 450 Cities Worldwide.

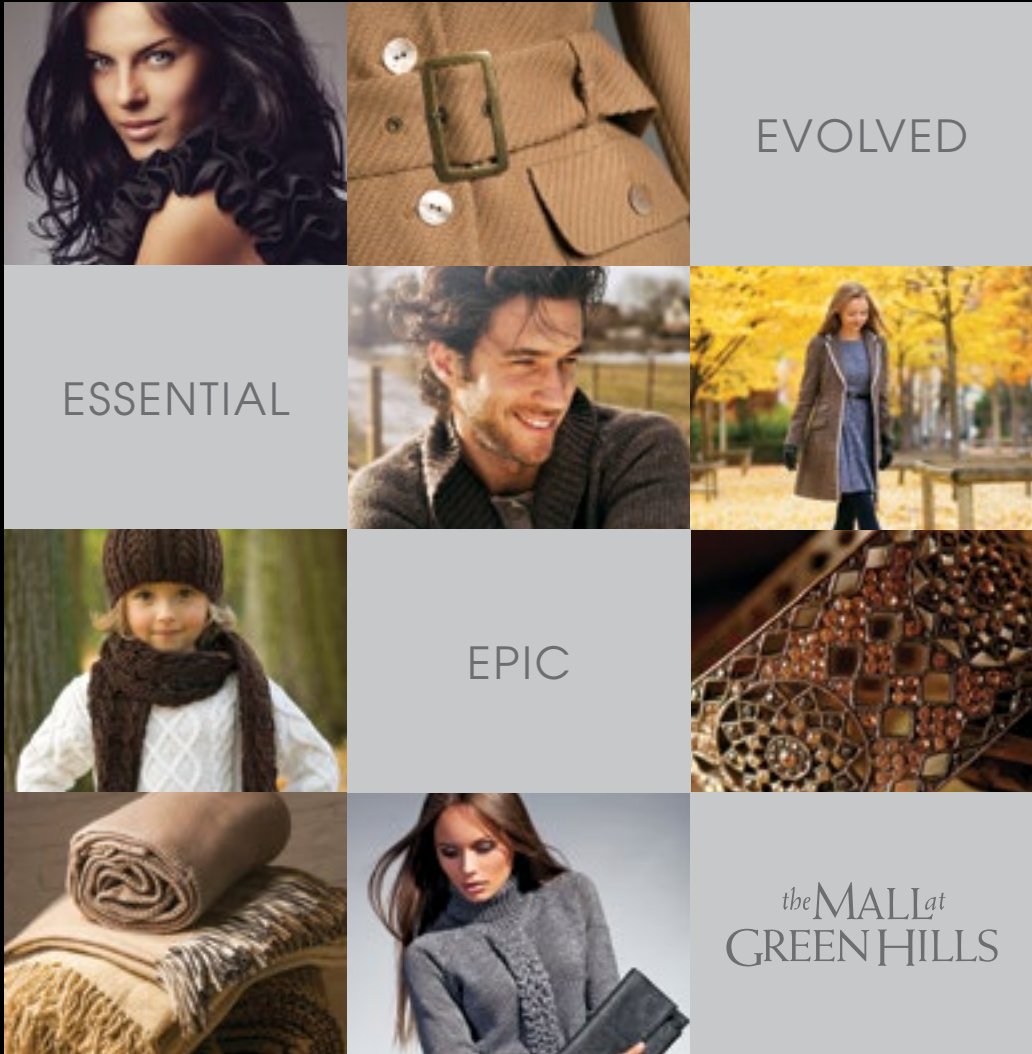


GRAND AVENUE[™]

Call us today at 615.714.5466 or toll-free at 866.455.2823
or visit GRANDAVENUEWORLDWIDE.COM

Download
OUR APP
to book on
the go!






APPLE • ATHLETA • BURBERRY • THE CHEESECAKE FACTORY
 THE CONTAINER STORE • DAVID YURMAN • FREE PEOPLE • GUS MAYER
 JIMMY CHOO • KATE SPADE NEW YORK • LOUIS VUITTON
 MICHAEL KORS • OMEGA • RESTORATION HARDWARE • SEPHORA
 STUART WEITZMAN • TIFFANY & CO. • TORY BURCH • TUMI

the MALL at GREEN HILLS

NORDSTROM • DILLARD'S • MACY'S

OVER 100 SPECIALTY SHOPS & RESTAURANTS
 HILLSBORO PIKE, I-440 EXIT 3 • NASHVILLE, TN • SHOPGREENHILLS.COM



At Bridgestone
Americas,
performance is
in our blood.
That's why
we're proud to
call Nashville home.

You'll find more than 2,300 Bridgestone teammates
hard at work and play in Nashville's communities.
Being involved is an important part of our business.
It's our passion. It's our home.

BRIDGESTONE
Your Journey, Our Passion



Find out more at www.BridgestoneAmericas.com

BMW i



The Ultimate
Driving Machine®

GREEN STILL MEANS GO.

When we set out to build an electric car, we set out to build a BMW. And we did just that with the first-ever, all-electric BMW i3 with 170 hp and up to 110 electric miles on a single charge.* It aims to take driving to a whole new dimension—so hold tight, because where we're going, there's no looking back.

BMW of Nashville

4040 Armory Oaks Drive
Nashville, TN 37204
615-850-4040
bmwofnashville.com

*Based on BMW NA test results of real-world driving.

©2014 BMW of North America, LLC. The BMW name, model names and logo are registered trademarks.

Letter from the Publishers



Dear Readers,

As we begin our 21st year as the publishers of the *Performing Arts Magazines*, we want to stop and take a moment to say thank you. Thank you to the arts groups for the incredible shows they produce for our enjoyment each year. Thank you to the ticket buyers and the patrons of the arts for their love of the performing arts, and thank you to our advertisers who have loyally supported our publications throughout the years.

When asked if advertising in the *Performing Arts Magazines* works, we simply point to an incredible statistic...over 90 percent of our annual advertisers renewed last year, and even more amazing...over 80 percent of our major advertisers have advertised consistently for more than 10 years. Reading between the statistical lines...clearly the business community understands that the Performing Arts' audience is a very important market to reach. If you want to learn more about how your company can benefit from an annual ad buy please go to: GloverGroupEntertainment.com or give us a call at 615-373-5557. We provide Nashville and Franklin with a one-stop option for arts and entertainment information as well as advertising.

In addition to the Performing Arts Magazines, it's also our great pleasure each year to provide local readers and visiting tourists with an annual guide to arts and entertainment. Be sure to pick up a copy of *Nashville Arts & Entertainment Magazine* at your favorite newsstand location, or go to NAEmag.com. We are also pleased to be the official magazine in all 800 rooms of the Omni Hotel.

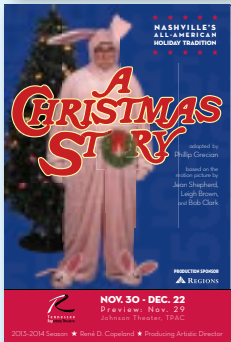
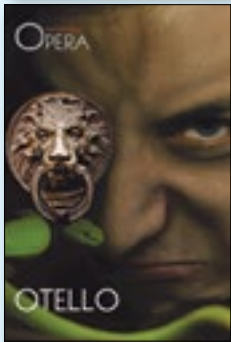
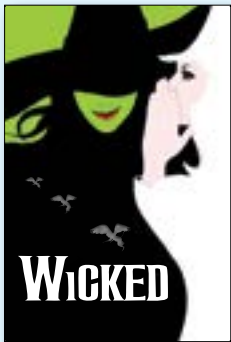
For additional information and special online promotions, please follow us on Facebook and Twitter.
Thank you!

Robin & Gary

Robin@GloverGroupInc.com
Gary@GloverGroupInc.com

Follow us on Facebook, Twitter & Pinterest
www.GloverGroupEntertainment.com
www.NashvilleArtsAndEntertainment.com

NASHVILLE'S PERFORMING ARTS PUBLICATIONS
For Advertising Information, please call 615.373.5557





Bad cough.
Sore throat.
Thursday night.

Bring it.

When you need a pediatrician and your pediatrician's office is closed, bring your child to Vanderbilt Children's After-Hours Clinics. A board-certified Vanderbilt pediatrician is on site nights and weekends, treating everything from flu and fevers to rashes and beans in ears. No appointment necessary—just walk right in. We'll even send your child's pediatrician a same-day report about your visit. For more information, visit [VanderbiltChildrensAfterHours.com](https://www.vanderbiltchildrens.org/after-hours).

Vanderbilt Children's After-Hours Clinics

Open nights and weekends in
Spring Hill, Mt. Juliet and Hendersonville

No referral necessary, but please call your pediatrician first.



Come and be...

Inspired



Lighting



Kitchens



Hardware



Appliances

Celebrating 70 Years of Inspirations!



Hermitage
Lighting
Gallery

531 Lafayette Street
Nashville, TN | 615•843•3300
Monday - Friday 8 to 5 | Saturday 9 - 5
www.hermitagelighting.com

Take good care of your money.



GET TRUSTED FINANCIAL GUIDANCE FOR YOUR UNIQUE JOURNEY.

Whether it's investing, financial planning, trust or insurance services, you'll find a personal approach to financial guidance from FTB Advisors. We take the time to listen to you to learn your short and long-term goals. Then we help you develop a balanced portfolio and find the coverage you need to protect what is important to you. It's all part of a rich tradition of financial integrity and service that we've been providing clients for generations.

START PLANNING YOUR FUTURE AT FTBAdvisors.com



Insurance Products, Investments & Annuities: Not A Deposit | Not Guaranteed By The Bank Or Its Affiliates | Not FDIC Insured | Not Insured By Any Federal Government Agency | May Go Down In Value Insurance Products and Annuities: May be purchased from any agent or company, and the customer's choice will not affect current or future credit decisions.

FTB Advisors is the trade name for wealth management products and services provided by First Tennessee Bank National Association ("FTB") and its affiliates. Financial planning and trust services provided by FTB. Investment management services, investments and annuities available through FTB Advisors, Inc., member FINRA, SIPC, and a subsidiary of FTB. Insurance products available through FTB Advisors Insurance Services, Inc. ("FTBIS"). In some states, insurance products and annuities are available through First Horizon Insurance Services, Inc. ("FHIS"), a Tennessee corporation and a subsidiary of FTB. The principal place of business of FHIS is 165 Madison Ave., Memphis, TN 38103. CA License # OD12174. FTB Advisors, Inc., FTBIS, and FHIS may offer annuities or transact insurance business only in states where they are licensed or where they are exempted or excluded from state insurance licensing requirements. FTB Advisors does not offer tax or legal advice. You should consult your personal tax and/or legal advisor concerning your individual situation.

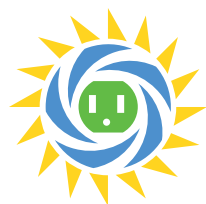
©2014 First Tennessee Bank National Association. www.firsttennessee.com



Sign up for Green Power Switch[®] and save as much CO₂ as 1.5 hybrids.

Did you know you can sign up for Green Power Switch for as little as \$4 a month? And believe it or not, over the course of a year, that \$4 a month worth of green power keeps more carbon dioxide out of the atmosphere than 1.5 hybrid vehicles.* So get more green "bang" for your buck. Visit greenpowerswitch.com and sign up today.

*Compares yearly CO₂ emissions avoided by driving a hybrid vehicle vs. a comparable non-hybrid to purchasing twelve 150 kWh blocks of green power. (EPA Green Power Equivalency Calculator)



Green Power Switch[®]
A TVA Renewable Energy Initiative





URNS ROADS INTO ESCAPE ROUTES.

The Jaguar XF was built to elude, as well as impress. That's why the Jaguar XF comes with a range of innovative powertrains, beginning with the thrilling yet ruthlessly efficient 240 hp turbocharged XF 2.0T. Visit your Jaguar Retailer and see the Jaguar XF in person. You'll realize the only thing it won't escape is attention.

Jaguar Nashville

3 Cadillac Drive
Brentwood, TN 37027
615-986-6000
jaguarnashville.com





STEINWAY PIANO GALLERY

NASHVILLE

4285 Sidco Dr. Nashville, TN 37204

615.373.5901

www.SteinwayFamilyPianos.com

*Supporting our
Community for
4 Generations!*

STEINWAY & SONS

Since 1929, we have offered the very best pianos in every price range, as a result we consistently sell more pianos than anyone else in Nashville!



TPAC PRESIDENT'S MESSAGE

Welcome to the Tennessee Performing Arts Center, where

you're investing in your community, the education of children, and even the Broadway industry with your presence here.

We're especially excited that *Kinky Boots* is on our schedule this year, because TPAC invested in this show as a member of the Independent Presenters Network. The IPN plays a producing role for a number of musicals each year, mainly to serve our audiences. We help develop shows that will hopefully be hits on Broadway and then tour to venues like TPAC across the country. You can imagine our excitement when *Kinky Boots* became the big winner at the 2013 Tony Awards. Our return on that investment includes its spot on our current schedule, giving our audiences a wonderful new musical to enjoy. Fresh and fun, *Kinky Boots* is one of the most joyful and inspiring musicals I've ever seen. We're proud to have played a part in its development.

Speaking of investments... Whenever you purchase a ticket to a performance at TPAC – or buy food and beverage here – you're making an investment in the state and local economy. The economic impact of TPAC and audience spending was over \$64.1 million last year, including more than \$3.3 million in state and local revenues. That powerful impact translates to more than 1,000 full-time jobs and more than \$23 million in household income for workers in a wide variety of businesses.

TPAC's most important investment – and yours – is our contribution to the education of children in Tennessee and southern Kentucky. I hope you share my pride in knowing that TPAC Education is one of the most comprehensive programs of its kind in the United States. Numerous national studies link arts education to improved academic achievement, graduation rates, and other factors that position children for success in school and life. Your contributions to TPAC Education are an investment in the quality of education and the future of your community.

I thank you for joining us and sincerely hope you enjoy the time you've invested in today's performance.

Kathleen W. O'Brien

TPAC President and Chief Executive Officer



One way to support TPAC'S

educational initiatives is to “round up” your purchase to the next \$5 increment when you buy tickets online. Last year, that option resulted in over \$31,900 of direct support for programs serving children from pre-school through high school. Through “round up” and other ways, your support of TPAC'S cultural and educational initiatives makes an impact in classrooms and a difference in individual lives. For more information, visit TPAC.ORG/Support.



TPAC Education proudly partners

with three schools through the Pencil

Foundation, linking community resources with Nashville Public Schools to help young people achieve academic success and prepare for life.

Here are some photographs of students from each “Pencil Partner.”

The Academy of Hospitality and Marketing, Antioch High School students catered an event at TPAC (top left);

Nashville School of the Arts students took part in a movement workshop led by a TPAC Education guest artist (top right); and

I.T. Creswell Arts Magnet Middle School participated in TPAC Education's Disney Musicals in Schools.

ARTS PARTNER: DELTA DENTAL OF TENNESSEE GIVES BACK TO THE COMMUNITY WITH TPAC

In addition to sponsoring TPAC Gala 2014, Delta Dental of Tennessee has been an active, creative corporate partner, collaborating with TPAC on special projects, including the production of "Brushing is Fun." The lively video on dental care features TPAC Education teaching artists at a local Head Start classroom served by Wolf Trap Early Learning Through the Arts, one of TPAC's five education programs. Illustrating how music, puppetry, storytelling and other arts are powerful teaching tool, the video can be enjoyed by children and families at home along with other fun resources from Delta Dental.

"Delta Dental has a longstanding relationship with TPAC. We are proud to support the arts and excited about the ways that the arts are used to teach our children the fundamentals of good health, like brushing your teeth," said Phil Wenk, D.D.S., president and CEO, Delta Dental of Tennessee. "The work being done with Head Start is wonderful. We've had the best experience possible with TPAC and encourage other corporations to support arts education and explore ways to become actively involved."

Delta Dental's philanthropic initiative, Smile 180, reflects the transformative power of a healthy smile to completely turn someone's life around and is committed to improving oral health and ultimately the overall health of all Tennesseans by supporting like-minded organizations and charities. Since 2003, Delta Dental has provided more than \$14 million in community giving to more than 100 dental clinics, dental schools, hospitals, charities, and other organizations across Tennessee.

Good oral health is essential to a healthy life and Delta Dental makes taking care of your smile easy with access to care, comprehensive benefits, exceptional service, and superior value. Delta Dental combines the largest national network of dentists with a focus on the unique dental insurance needs of every individual served. For dental made simple, choose Delta Dental.

**Enjoy the video and other resources at
DeltaDentalTN.com/BrushingisFun.**



TPAC GALA



🔗 Larry and Anita Cash, Marci and Stephen Houff



🔗 Nelda and Russ Sturgeon

Kathleen O'Brien and John Stein, representative of Bank of America 🏦



HONORED **EDDIE GEORGE**
AND **BANK OF AMERICA** ON
AUGUST 23, 2014



☞ Martha and Congressman
Jim Cooper



☞ Barbara and Jack Bovender



☞ Eddie George and John Stein
Tamara and Eddie George ☞



Julie and Dale Allen ☞



At the 2014 TPAC Gala on Saturday, August 23, the Tennessee Performing Arts Center presented the Applause Award, its highest honor, to Eddie George and Bank of America for their contributions to the arts. The theme for the festive event was the Broadway hit, *Kinky Boots*, the big winner at the 2013 Tony Awards, including Best Musical and Best Score by Cyndi Lauper.

Co-Chairs for the event were Anita Cash and Marci Houff. Additional leadership included Linda and Jere Ervin and Suzanne and Grant Smothers (patron committee chairs), Bill and Janet Schock (kickoff party hosts) Julie Boehm, Jason Bradshaw, Bob Deal, Phillipe Chadwick, Amy McDaniel, and Melissa Mosteller.

After retiring from professional football, Eddie George turned to acting, playing leading roles for Amun Ra Theatre and Nashville Shakespeare Festival. The Ohio State University graduate, winner of the Heisman Trophy, set numerous NFL records when he played for the Tennessee Titans.

Represented by John Stein, Bank of America has been a strong supporter of TPAC's education program since the arts center opened in 1980, one element of its support for community-based arts and cultural initiatives nationwide.

Delta Dental of Tennessee was the title sponsor of TPAC Gala 2014. Additional sponsors included Adams and Reese, BlueCross BlueShield of Tennessee, Corrections Corporation of America, Barbara and Jack Bovender, Classic Party Rentals, Community Health Systems, Delek US Holdings, Dollar General, HCA/TriStar Health, Ironhorse Farms, Nissan North America, and Vanderbilt University.

Photos by Mimosa Arts and Peyton Hoge.



☞ Amy McDaniel and Matt Felghendrher
Eddie George, Brenda and Ron Corbin ☞





TPAC INSIDEOUT

They go where no TPAC audiences have gone before – into the exciting inner world of the performing arts.

InsideOut, TPAC Education's popular program for adults, provides unique opportunities to engage with artists, serving more than 3,000 people a year through three distinct series.

LookIn takes the public into the rehearsal halls of Nashville Ballet, Nashville Opera, and Nashville Repertory Theatre, TPAC's three resident companies.

Arts Appetizer pairs touring artists with community experts for lively conversations on the Wednesday evening before each show in TPAC's Broadway season.

InsideOut of the Lunch Box, presented in partnership with Vanderbilt University, features a panel discussion, often including performance excerpts and dialogue with academic experts on issues explored through music, theatre, opera and ballet.

"We've partnered with Vanderbilt for ten years, collaborating with Gail Williams, their associate director of community engagement," said Kristin Dare-Horsley, TPAC's director of education outreach. "We want to keep the format that's been incredibly popular with our audience. At the same time, we're always open to new ideas and looking for ways to make the program fresh and interesting."

Reservations open three weeks before each event, with a free box lunch for the first 300 people who sign up. Upcoming programs will feature panel discussions, with performance excerpts, on Nashville Repertory Theatre's *The Whipping Man* on March 3 and Nashville Opera's *Pirates of Penzance* on April 2.

All 300 lunches are consistently given away, with the recent program on Nashville's The WannaBeatles setting a record by hitting that magic number within two hours.

Each LookIn at the rehearsal halls of TPAC's resident companies also fill to capacity.

"The rehearsal process is sacred, rarely open to the public. It's a highly unique opportunity to observe directors working with the artists as they refine their

performance," said Dare-Horsley. "Later, it's fun and exciting to see the finished product on stage, experiencing that polished, beautiful work of art that they witnessed in rehearsal."

Connecting the subject matter of a Broadway show to their own lives is what audiences especially appreciate about the Arts Appetizer.

"We get the most comments in surveys on how much participants enjoy hearing from people in their own community, learning about our area while they learn about the show," said Dare-Horsley. "They also love the stories of the touring cast members – their history, how they got the part, and what it's like on the road."

For past shows, the pairings between shows and community experts have included nuns (*Sister Act*), historians (*War Horse*), a psychic medium (*Ghost*), a meteorologist (*White Christmas*), and the director of the Tennessee Bureau of Investigation (*Catch Me If You Can*).

For more information, visit TPAC.ORG/InsideOut.



A SPECIAL EVENING EVENT

WALKING THE TIGHTROPE • March 5 at 6:00 p.m.
Free pre-show refreshments in the lobby

Adult audiences are invited to see a critically-acclaimed play that will be presented to student audiences during the day through TPAC Education's Season for Young People.

Why?

"This particular production is just as relevant – if not more so – to adults, who will experience it from a totally different perspective than young people," said Dare-Horsley.

Winner of multiple honors for 24th Street Theatre in Los Angeles, Mike Kenny's *Walking the Tightrope* features a grandfather who struggles to explain the absence of "Nanna" to his visiting granddaughter. With humor and help from a clown, they discover the meaning of family – celebrating life and learning to accept death. Beautifully produced video and live music transport the audience from the quaint English seaside to the spectacular big top of the circus.

For information on reservations for this evening event, contact Kristin Dare-Horsley at KHorsley@TPAC.org or 615-687-4291.



Based on the animated television special “Rudolph the Red-Nosed Reindeer” and the stage production directed and conceived by
Jeff Frank and First Stage

Executive Tour Producers

MICHAEL COHL AND S2BN ENTERTAINMENT ALISON SPIRITI & JUSTIN SUDDS

Stage Adaptation by

ROBERT PENOLA

Arrangements/Orchestrations by

TIMOTHY SPLAIN

Music/Lyrics by

JOHNNY MARKS

“Rudolph the Red-Nosed Reindeer” animated television special adapted from a story by Robert L. May and the song by Johnny Marks.

with

**LEXY BAEZA RYAN COON JASON MICHAEL HAMMOND
WESLEY EDWARDS HAILEY TWETER NICK WAALAND
JON M. WAILIN MELISSA GLASGOW
ABBY BOLIN CARLSON MATT KRIGER DINO NICANDROS**

and

**ALISON BORESI JENNA GILLESPIE JAYCOB HUNTER NANCY LAM ANTHONY
MARONE STEVEN RADA
ROBERT RAMIREZ MORGAN REYNOLDS AUTUMN MELODY THOMAS**

Costumes and Puppets by

HARDRIVE PRODUCTIONS LLC

Projection Design by

JONATHAN INFANTE

Lighting Design by

JEAN-YVES TESSIER

Sound Design by

JULIE FERRIN

Wig Design by

ANTHONY GAGLIARDI

Flying Effects by

ZFX INC.

Production Stage Manager

MARIE MANNING

Assistant Stage Manager

KIRA ALEMANIA

Tour Marketing and Press

JOHN TELLEM

Musical Direction

DAVID LAMOUREUX

YARNI YAVITZ MARKETING

Assistant Choreographer

ESTEVAN VALDES

General Management

McCOY RIGBY ENTERTAINMENT

Assistant Director/Choreographer

GRETCHEN DAWSON

General Manager

BUCK MASON

Directed and Choreographed by

DANA SOLIMANDO

rudolphthemusical.com

Rudolph the Red-Nosed Reindeer and related elements © and TM under license to Character Arts, LLC. All rights reserved.

CAST

(in order of appearance)

Sam the Snowman	RYAN COON
Mrs. Claus	ABBY BOLIN CARLSON
Santa Claus	JASON MICHAEL HAMMOND
Donner	JON M. WAILIN
Mrs. Donner	MELISSA GLASGOW
Rudolph	LEXY BAEZA
Boss Elf	DINO NICANDROS
Hermey	WESLEY EDWARDS
Elves	ALISON BORESI, NANCY LAM, STEVEN RADA, ROBERT RAMIREZ, MORGAN REYNOLDS, AUTUMN MELODY THOMAS
Fireball	MATT KRIGER
Coach Comet	NICK WAALAND
Yearlings	ALISON BORESI, JAYCOB HUNTER, ROBERT RAMIREZ, MORGAN REYNOLDS, AUTUMN MELODY THOMAS
Clarice	HAILEY TWETER
Yukon Cornelius	NICK WAALAND
Puppeteers	ALISON BORESI, MELISSA GLASGOW, JAYCOB HUNTER, MATT KRIGER, NANCY LAM, DINO NICANDROS, STEVEN RADA, ROBERT RAMIREZ, MORGAN REYNOLDS, AUTUMN MELODY THOMAS
King Moonracer	JON M. WAILIN

UNDERSTUDIES

*Understudies never substitute for listed performers unless
a specific announcement is made at the time of the performance*
for Sam the Snowman/Santa/Yukon Cornelius—JON M. WAILIN
for Mrs. Claus—MELISSA GLASGOW

SWINGS

ANTHONY MARONE, JENNA GILLESPIE

DANCE CAPTAIN

JENNA GILLESPIE



The use of any recording device, either audio or video, and the taking of photographs, either with or without flash, is strictly prohibited.

MUSICAL NUMBERS

ACT ONE

Overture Orchestra

“A Holly Jolly Christmas” Sam, Chorus

“Jingle, Jingle, Jingle” Santa Claus and Donner

“We Are Santa’s Elves” (Instrumental)/
 “When Santa Claus Gets Your Letter” Elves

“We’re a Couple of Misfits” (Intro) Hermey

“Jingle, Jingle, Jingle” (Reprise) Young Reindeer

“There’s Always Tomorrow” Clarice, Chorus

“We’re a Couple of Misfits” (Continued) Rudolph

“We Are Santa’s Elves” Santa’s Elves

“We’re a Couple of Misfits” Hermey and Rudolph

“Fame and Fortune” Yukon Cornelius, Hermey and Rudolph

ACT TWO

Entr’acte Orchestra

“Silver and Gold” Sam

“The Most Wonderful Day of the Year (The Island of Misfit Toys)” The Misfit Toys

“There’s Always Tomorrow” (Reprise) Rudolph

“The Snowstorm” Orchestra, Chorus

“Rockin’ Around the Christmas Tree” Santa’s Elves

“We Are Santa’s Elves” (Reprise) Santa’s Elves

“A Holly Jolly Christmas” (Audience Participation) Sam

“A Merry, Merry Christmas” Rudolph and Misfits

“Rudolph the Red-Nosed Reindeer” All



**LEXY
BAEZA**



**RYAN
COON**



**JASON MICHAEL
HAMMOND**



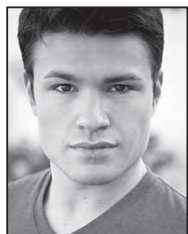
**WESLEY
EDWARDS**



**HAILEY
TWETER**



**NICK
WAALAND**



**JON M.
WAILIN**



**MELISSA
GLASGOW**



**ABBY BOLIN
CARLSON**



**MATT
KRIGER**



**DINO
NICANDROS**



**ALISON
BORESTI**



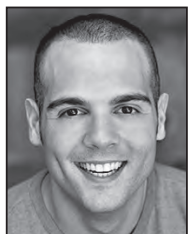
**JENNA
GILLESPIE**



**JAYCOB
HUNTER**



**NANCY
LAM**



**ANTHONY
MARONE**



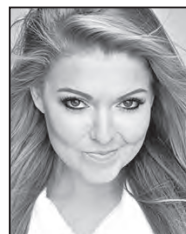
**STEVEN
RADA**



**ROBERT
RAMIREZ**



**MORGAN
REYNOLDS**



**AUTUMN MELODY
THOMAS**

WHO'S WHO IN THE CAST

LEXY BAEZA (*Rudolph*) was thrilled when she found out that she would be guiding Santa's sleigh through the night with her nose so bright! She was last seen in the national tour of *Cathy Rigby is Peter Pan* (John Darling/Peter u/s). Other credits include *25th Annual... Spelling Bee* (Logainne), *Spring Awakening* (Anna) and *Seussical!* (Gettrude McFuzz). Many thanks to Dana and the entire McCoy Rigby team (to whom she owes her career!), as well as the creative team for this amazing opportunity and last, but not least, to her family and friends for the endless amount of support they show her every single day. Enjoy the show!

RYAN COON (*Sam the Snowman*) is very excited to be a part of such an amazing cast and production crew on his first tour. His favorite roles include Judas Iscariot in *Jesus Christ Superstar*, Nicely Nicely Johnson in *Guys and Dolls* and Horton the Elephant in *Seussical*. "Thanks Mom and Pop for all the support, thanks to the roomies for the encouragement, and much love to my newly born nephew, Maverick."

JASON M. HAMMOND (*Santa Claus*) is so delighted to join the cast of *Rudolph*! Favorite past credits include Nicky (*Avenue Q*—regional premiere, Santa Ana, Calif.), Yvan (*Art*, Anthem, Ariz.), Jack (*Into the Woods*, Phoenix), Willum (*The Nerd*, Chicago), Bob Cratchit (*A Christmas Carol*, Los Angeles), Gary (*4Play*, Chicago), Marcellus (*The Music Man*, Aliso Viejo, Calif.), The Fool (*Accidental Death of an Anarchist*, Phoenix) and Mr. MacGregor (*Peter Rabbit and Me*, Chicago). A former Disneyland Jungle Cruise Skipper, winner of such prestigious awards as his high school's "Most Likely to Be A Comedian" and a \$500 cash prize from a karaoke contest hosted by Danny Bonaduce, Jason hopes to one day play the title role in *The Phantom of the Opera*. A huge thanks to the creative team and all involved with this production, his supportive parents and God for every good and perfect thing. Jason recently recorded an album of his favorite songs, titled *Remember*. Visit jasonmichaelhammond.weebly.com for more ridiculousness. A proud graduate of Grand Canyon University. Happy holidays to you!

WESLEY EDWARDS (*Hermey*) is a proud Louisville, Ky. native with a B.A. in Musical Theatre from Point Park University. Wesley has performed with CLO, North Shore Music Theatre, Mountain Playhouse, Pittsburgh Opera, Derby Dinner Playhouse and many more. Wesley would like to thank his family and his partner in crime, Anthony.

HAILEY TWETER (*Clarice*) is delighted to be making her debut in Herkon Production's *Rudolph the Red-Nosed Reindeer: The Musical*. She has a Bachelors degree from VUSC in Musical Theatre and also studied at the British American Dramatic Academy in Oxford, England. She thanks her family and friends for their unwavering support.

NICK WAALAND (*Coach Comet*, *Yukon Cornelius*) is deeeeeelighted to help bring this holiday classic to life! He is blessed to have been a part of such productions as *Annie Get Your Gun*, *Little Women*, *Metamorphoses*, *Equus*, *Don't Dress for Dinner* and *Fiddler on the Roof*. Spread joy to one and all!

JON M. WAILIN (*Donner*, *Moonracer*, *Puppeteer*, u/s *Sam*, *Santa*, *Yukon*). Select regional: *The Producers* (Carmen Ghia), *The Drowsy Chaperone* (Gangster #1), *Shrek* (Big Bad Wolf), *9 to 5* (Josh), *All Shook Up*, *A Chorus Line*, *Hairspray*. Education: Fullerton College and the American Conservatory Theater. jonmwailin.com.

MELISSA GLASGOW (*Mrs. Donner*, *Puppeteer*) is thrilled to bring one of her favorite Christmas movies to life! She performs regionally in Southern California and directs/choreographs at the Youth Academy of Dramatic Arts in West Hollywood. Thanks to Dana, McCoy Rigby, cast, crew and creative team for all their hard work on this show. Happy holidays!

ABBY BOLIN CARLSON (*Mrs. Claus*, *Music Supervisor*), a Southern California native, holds a Teaching Credential and Bachelor of Music from the Cole Conservatory at CSU, Long Beach. Highlights include *Jekyll & Hyde* (Emma), *A Man of No Importance* (Adele), *Into the Woods* (Baker's Wife), *Avenue Q* (Kate), *The Wizard of Oz* (u/s Glinda) and *Parade*. Thanks to God, Matt and the talented cast/team for making this tour so wonderful!

MATT KRIGER (*Fireball*, *Puppeteer*) has been performing in musical theater for most of his life. He has performed in more than 20 shows including *Les Misérables* (Enjolras), *White Christmas* (Bob Wallace) and *Miss Saigon* (John). This is his first tour, and he couldn't be more excited!

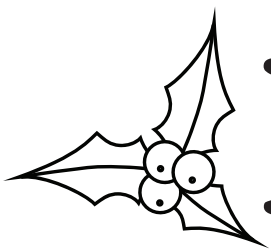
DINO NICANDROS (*Boss Elf*, *Puppeteer*) is a recent graduate of Pepperdine University. Regional credits: *Ragtime* (Ensemble), *Les Misérables* (Prouvaire/Ensemble). Select Pepperdine credits: *Les Misérables* (Jean Valjean), *The Kentucky Cycle* (JT Wells/Abe Steinman), *Tartuffe* (Orgon). Debuted the role of Joe Angelo in the 2013 Scottish national tour of *Why Do You Stand There in the Rain?* dnicandros.com.

ALISON BORESI (*Elf*, *Young Doe*, *Puppeteer*) is thrilled to be spending the holidays with *Rudolph*! Recent credits include *Finding Nemo the Musical* in Disney World (Nemo), *Beauty and the Beast* and *Shrek*. Alison also performs with the Red Car News Boys in Disneyland. Endless love and thanks to Robert and Karla.

JENNA GILLESPIE (*Female Swing/Dance Captain*) is beyond excited to debut in her first performance with McCoy Rigby Theater. Jenna is a graduate from UC Irvine. Credits: *Ragtime* (3D Theatricals), *The Music Man* (MT West) and recently *City Beat* (Universal Studios Hollywood). Future credits: Sound Designer for *Dead Rabbit*. Happy holidays!

JAYCOB HUNTER (*Reindeer*, *Puppeteer*) is grateful to be touring with such a great and talented cast and crew! A graduate of the Acting Intensive at South Coast Repertory, he has also performed in its productions of *A Midsummer Night's Dream* and *A Christmas Carol*. He thanks his family for their loving support and God for this gift of performing.

NANCY LAM (*Elf*, *Puppeteer*), as a little kid, dreamed of growing up to be a performer. She is now grown up and



Rudolph

the Red-Nosed Reindeer

Rearrange the letters to name some of the characters from the musical!

MERHEY _____

ONDERN _____

ERICCAL _____

LABFLIRE _____

PHOLDUR _____

SMR CAULS _____

ANTSA SULAC _____



LODLY ORF USE _____

KNOUY NORCILUSE _____

GNIK MAROROCEN _____



ANSWERS: Hermey; Donner; Clarice; Fireball; Rudolph; Mrs. Claus;
Santa Claus; Dolly for Sue; Yukon Cornelius; King Moonracer



Christmas Is Coming!

Have you written a letter to Santa? You can use this page to say hello to Santa and ask him how he's doing. Let him know how good you've been all year long and don't forget to tell him what you want for Christmas!



overjoyed to be touring the country with this adorable show! Love to Lam Fam, Terry & Bellatrix and Dana! B.A. Dance/NYSP2010 UC Irvine. More Info: nancylam.me. Instagram: @nancylam.

ANTHONY MARONE (*Male Swing*). This marks Anthony's first production with McCoy Rigby! A N.J. native, he graduated from Wagner College on Staten Island in N.Y. as an Arts Administration major. Past favorites include Link Larkin (*Hairspray*), Lieutenant Joseph Cable (*South Pacific*) and Paul McCartney (*Twist and Shout*). Love to his amazing family and friends!

STEVEN RADA (*Elf*, *Puppeteer*). Regional credits: *Anything Goes* at the Utah Shakespeare Festival; *A Chorus Line* (Paul) at Musical Theatre West; *Cats* (Mungojerrie) and *Annie Get Your Gun* (Tommy Keeler) at San Diego Musical Theater. Other credits: *Evita* (Che) and *42nd Street* (Andy Lee). Steven wishes a special thanks to his Mom, Dad, Andrea and Jon. "Owe nothing to anyone except to love one another."

ROBERT RAMIREZ (*Elf*, *Young Doe*, *Puppeteer*). National tour: *In the Heights* (Sonny, Usnavi). Robert is also an accomplished professional magician who has performed from San Diego to N.Y.C. Follow him on Twitter: @RobRamMagic. Youtube: RobthemagicianLIVE or his website RobTheMagicianLive.com. Thanks to McCoy Rigby, David and Dana. Love to my Al(l)isons.

MORGAN REYNOLDS (*Elf*, *Reindeer*, *Puppeteer*) is beyond excited to deck the halls! Recent transplant from L.A. to the Big Apple. Previous credits include *Life Could Be a Dream* (world premiere, The Hudson Theater/Laguna Playhouse); *The Full Monty* (Third Street Theatre/Sierra Repertory); *The Producers* (Arizona Broadway); *All Shook Up* (3D Theatricals); *Hello, Dolly!* (Performance Riverside). Featured guest artist for New Works Cabaret, Kennedy Center, D.C. Follow on Twitter @MORGANwREYNOLDS or check him out at MorganReynoldsOnline.com.

AUTUMN MELODY THOMAS (*Elf*, *Young Doe*, *Puppeteer*). An accomplished union actor since age seven, Autumn has spent the past several years touring abroad as a singer/dancer. She currently works as an acrobat in a stunt show and as a front vocalist for corporate entertainment companies. She wishes to thank God for this opportunity and Jason for his devotion.

MARIE MANNING (*Production Stage Manager*) is thrilled to be working on *Rudolph the Red-Nosed Reindeer: The Musical*. Credits include, but not limited to: Production Stage Manager—Gypsy (Magic Circle Theater), *The King and I* (Tower Theater), *Marat/Sade* (Grass Valley Center for the Arts), *Comedy of Errors* (Colfax Theater), *Les Misérables* (Dewitt Theater). Assistant Stage Manager—*Side Show* (Little Theater), *Beggar's Opera* (Little Theater). Thanks to Lisa, Jill, Denice and Alma.

BOB PENOLA (*Script Adaptation*) is an award-winning playwright and creative writer/director based in N.Y.C. Bob has created shows that can be seen around the world on luxury cruise ships, theme parks and in corporate events. For him, it's a dream come true to be creatively involved in bringing this classic to life on stage.

JONATHAN FLOM (*Producing Partner*) has overseen the translation of the 1964 "Rudolph the Red-Nosed Reindeer" television special into the stage show *Rudolph the Red-Nosed Reindeer: The Musical*. He

has worked directly with all of the theater companies and contributors who have brought their passions and great talents to the development of this special 50th anniversary inaugural touring production.

DANIELLE FLOM (*Associate Producing Partner*) has been responsible for ensuring that all of the visual elements in the production of *Rudolph the Red-Nosed Reindeer: The Musical* faithfully capture the unique charm and the overall look and feel of the iconic 1964 television special, "Rudolph the Red-Nosed Reindeer."

DANA SOLIMANDO (*Director/ Choreographer*) and her children enjoyed growing up with this iconic American classic, and she is thrilled to bring it on stage to audiences nationwide! Other choreography credits include *Ragtime* (3D Theatricals), *La Cage aux Folles* (California Musical Theatre), *Parade* (3DT), *Les Misérables* (McCoy Rigby Entertainment), *Miss Saigon* (McCoy Rigby and The Macau International Music Festival), *Little Miss Scrooge* with John and Sam Caird and Paul Gordon (Rubicon Theatre Co.—world premiere), *Spring Awakening* (La Mirada OnStage), *The Wizard of Oz* (California Musical Theatre), *Grease* (Paramount Theatre), *All Shook Up* (3DT), *Little Shop of Horrors* (MRE), *Hairspray* (3DT), *South Street* (Pasadena Playhouse), *Jesus Christ Superstar* (Really Useful—Broadway nat'l tour) starring Sebastian Bach and the late Carl Anderson, *Swing!* (multiple productions, Crystal Cruises), *Route 66* and *Maestro*. Broadway performance credits: *Swing!* (Country/West Coast Feature), *Peter Pan* (Tiger Lily), *Cats* (Rumpleteazer). This show is dedicated to her parents, husband Buck and children Hailey and Jude! danasolimando.com.

DAVID LAMOUREUX (*Musical Director*). Los Angeles regional premieres: *Sunset Boulevard*, *Avenue Q*, *The Wedding Singer*. Other credits: *Parade*, *A Chorus Line*, *Chess*, *High Fidelity*, *Evita*, *Jesus Christ Superstar*, *Into the Woods*, *Sweeney Todd*, *Assassins*, *Rent*, *Cats*, *Godspell*, *The Will Rogers Follies*. Recording/touring: Yoshiki (X-Japan), Gwen Stefani, Augustana, Dave Eggar (Grammy nomination), Katie Costello, Lucy Schwartz, Vanessa Carlton, The Damnwells. Co-Producer, Musical Theatre West's Reiner Reading Series. Co-Director, Los Angeles Musicians Collective. For more information, visit losangelesmusicianscollective.com.

GRETCHEN DAWSON (*Assistant Director/ Choreographer*) is thrilled to be assisting the amazing Dana Solimando again! She recently was her assistant on MRE's *Les Misérables* (Ovation nomination) and 3-D Theatricals' *Damn Yankees* (Ovation nomination). Recent acting/assisting credits include Lynette Fromme in *Assassins* (The Gem Theater); Lady Gaga in *Holly Jolly Blue Christmas Carol* written by Mary Willard, starring Fred Willard (The Grove Theater); Assistant Choreographer to Dana Solimando on *Spring Awakening* (MRE); Roxie Hart in *Chicago* (The Gem Theater); Linda in *The Wedding Singer* (Maverick Theater); Lorraine in *42nd Street* (Rose Center Theater). Gretchen is also a Producer of 3-D Theatricals alongside her brothers in southern California. You can also catch Gretchen in Fred Willard's sketch comedy group called "The MoHos" in L.A. She would like to thank the whole team at MRE and Dana Solimando for this wonderful opportunity. Enjoy the show!

ESTEVEAN VALDES (*Assistant Choreographer*). Regional assistant choreographer credits: *Ragtime*, *Parade* (3-D Theatricals); *Pazzazz! The Musical* (Brookledge

Corporation); *Cinderella* (Cabrillo Music Theatre). Regional performance credits: *Damn Yankees* (3-D Theatricals); *Miss Saigon* (China premiere, McCoy Rigby Entertainment); *South Street* (Pasadena Playhouse); *1940's Radio Hour* (CLOSBC); *Happy Days*, *White Christmas*, *Guys and Dolls*, *Cats*, *The King and I*, *Beauty and the Beast* (Cabrillo Music Theatre). Proud member of Actors' Equity Association! Representation: Connor, Ankrum & Associates. Thank you to Michael Cohl and S2BN, Justin Suds & Alison Spiriti and special thanks to Dana Solimando for her guidance, encouragement and this opportunity. Happy holidays!

KIRA ALEMANIA (*Assistant Stage Manager*). Regional: *Cats* (McCoy Rigby Entertainment), *Les Misérables* (McCoy Rigby Entertainment), *Into the Woods* (PCC), *Hairspray* (PCC), *Company* (PCC), *Museum* (PCC,) *Zoey's Perfect Wedding* (PCC), *The Wizard of Oz* (Taylor PAC), *Die Fledermaus*, *The Marriage of Figaro*. Many thanks to Tom and everyone at McCoy Rigby. Love to Mom, Dad, and Cody!

JEAN-YVES TESSIER (*Lighting Designer*). Selected credits include *Maestro* (Crystal Cruises); *Ragtime*, *Parade*, *Avenue Q*, *Altar Boyz* (3D Theatricals); *Boeing Boeing*, *Ring of Fire*, *Smokey Joe's Cafe*, *Cats* (McCoy Rigby Entertainment); *Young Frankenstein*, *Sweeney Todd*, *Fiddler on the Roof*, *Hairspray*, *Dreamgirls* (Moonlight Amphitheatre); *Menopause The Musical* (ToC and GFour Productions); *Once Upon a Mattress*, *White Christmas*, *Breaking Up Is Hard To Do*, *Singin' in the Rain* (Cabrillo Music Theatre); *Sunset Boulevard*, *Summer of Love*, *Meet Me in St. Louis*, *42nd Street*, *Little Shop of Horrors*, *The Wizard of Oz*, *All Shook Up*, *The Pajama Game*, *Thoroughly Modern Millie* (Musical Theatre West).

JULIE FERRIN (*Sound Designer*) is honored to be part of *Rudolph the Red-Nosed Reindeer: The Musical* with this amazing cast, crew and production team! She grew up loving and watching the show every year with her family—it is tradition! Julie recently designed *Ragtime* with 3-D Theatricals and *Young Frankenstein* with DOMA Theatricals. Ms. Ferrin is President of Sound Advice LLC, a California-based sound design, engineering and rental company. Please visit soundadvisedesigns.com for more information and follow us on Facebook at Sound Advice LLC. Thank you for supporting the arts, and enjoy the show!

JONATHAN INFANTE (*Projection Designer*) is excited to join the creative staff for *Rudolph the Red-Nosed Reindeer: The Musical*. Owner of INFANTE media, a digital production house, Jonathan has spent the past five years helping introduce digital media into the performing arts. His current clients include the Disneyland Resort, 3-D Theatricals, Musical Theater West, Tuacahn Center for the Performing Arts, Fullerton College Fine Arts Division as well as many other theater companies and performing arts communities.

ANTHONY GAGLIARDI (*Wig Designer*) has been in the wig industry since 1968, working mostly with chemotherapy patients, those with alopecia and clients with thinning hair. However, he loves designing hairstyles for the theater. It brings out his creativity and provides a fresh challenge for each show. Most recent productions: *Sunset Boulevard*, *Young Frankenstein* and *Beauty and the Beast*. He is thrilled to be working with *Rudolph the Red-Nosed Reindeer: The Musical* this holiday season.

TERRY HANRAHAN (*Prop Designer*). As a little girl, Terry had no use for dolls; she only wanted to play with the dollhouse, decorating and redecorating it and making tiny faux everything... food, toys, Christmas trees, floral arrangements and even pets. And this is how a Prop Designer is made. Terry would like to thank the *Rudolph* producers for bringing this traditional joy to the stage, and all the folks at McCoy Rigby Entertainment, La Mirada Theatre for the Performing Arts, 3-D Theatricals, Reprise!, The Theatre at Boston Court, ICT and the Hollywood Bowl for letting her continue to have such a good time playing with all the fun stuff.

DONNA MacNAUGHTON (*Wardrobe Designer*) has been doing wardrobe for theatrical productions for 18 years, including four national tours, *Peter Pan* (Cathy Rigby), *Camelot* (Michael York and Lou Diamond Phillips) and *Happy Days the Musical*. Has worked on *Peter Pan* and *Miss Saigon* at the Macao International Music Festival. She has assisted costume designers, coordinated wardrobe, built costumes and dressed shows for MRE, LMT, 3-D Theatricals, MTW, Moonlight Stage Productions and CLOSBC, with the most recent being *Les Misérables* for MRE and *Ragtime* for 3-D Theatricals. She is extremely grateful for the opportunity to work with some of the most talented people in this industry.

ALISON SPIRITI (*Executive Tour Producer/Herkon Productions*) is thrilled to be a part of this very talented and passionate producing and creative team. Alison has had a broad career in touring, management, programming and presenting live theatrical and branded entertainment around the country. She has worked on such titles as *America's Got Talent LIVE*, *The Phantom of the Opera*, Green Day's *American Idiot*, among many others. She serves on the board of directors of the Association of Performing Arts Presenters. A special thanks to Mom, Dad, Dave and Ella for all their support.

JUSTIN SUDDS (*Executive Tour Producer/ Herkon Productions*) is honored to work with such an incredibly talented cast, crew and management team. Justin has had a successful career in theatrical touring, management, programming and producing branded entertainment for the stage. He has produced touring for *America's Got Talent LIVE*, *The Price is Right LIVE*, *PostSecret: The Show*, *One-Man Star Wars Trilogy* and *Sing-a-Long Sound of Music* among many others. He lives in Vancouver, Canada with his wife and young son. Special thanks to Eran, Henry, Mom and Julie for their confidence and support.

TRACEY McFARLAND (*Tour Direction*) is a seasoned theatrical executive with more than 17 years of experience in the touring industry. Her career highlights include senior positions at The Booking Group (Vice-President of Sales) and The Road Company (Vice-President Special Projects). Tracey has worked on a wide variety of touring theatricals including *Rent*, *Mel Brooks' The Producers*, *Mamma Mia!*, *Jesus Christ Superstar* with Ted Neeley, *Rock of Ages*, *David Copperfield*, *Rugrats Live*, *Michael Flatley's Lord of the Dance* and most recently, *Let It Be*, *PostSecret The Show*, and *Rudolph the Red-Nosed Reindeer: The Musical*!

BUCK MASON (*General Manager, McCoy Rigby Entertainment*). Production/General Management of more than thirty regional productions/concerts, three national tours, two international productions and two Broadway productions including *Jekyll and Hyde* with Constantine Maroulis and Deborah Cox, *Cathy*

Rigby is Peter Pan, Miss Saigon and Happy Days the Musical. Upcoming projects include *Billy Elliot*, *Mary Poppins* and the world premiere of Jane Austen's *Pride and Prejudice*. Proud husband of Dana, and father to Hailey and Jude.

McCOY RIGBY ENTERTAINMENT (*Tom McCoy & Cathy McCoy, General Management*). Currently celebrating 21 seasons at La Mirada Theatre for the Performing Arts, McCoy Rigby Entertainment (MRE) is one of the world's premier theatrical production companies. Headed by Executive Producers Tom McCoy and Cathy Rigby, MRE has produced more than ninety Broadway-caliber musicals, plays and concerts featuring some of the biggest stars working in the industry today. In addition, MRE has launched several Tony Award-nominated Broadway, international and national touring productions including *Peter Pan*, *Seussical the Musical* and *Annie Get Your Gun*, all starring Cathy Rigby; Frank Wildhorn's *Jekyll and Hyde* starring "American Idol" star and Tony Award nominee Constantine Maroulis along with Grammy Award nominee and R&B superstar Deborah Cox; *Jesus Christ Superstar* starring Carl Anderson and Sebastian Bach; *Camelot* starring Michael York and Lou Diamond Phillips; and *Happy Days the Musical* written by Gary Marshall and Paul Williams. Since 1990, *Peter Pan* starring Cathy Rigby has made four stops on Broadway, four Tony Award nominations including Best Revival of a Musical and Best Actress in a Musical. The A&E TV network premiere of "Peter Pan starring Cathy Rigby" received one Emmy Award and four Emmy Award nominations. MRE's other credits include numerous award-winning documentaries and stadium events.

S2BN ENTERTAINMENT (ICONIC REINDEER LLC) (*Producer*) is a diversified international family show and event entertainment company specializing in the acquisition, development and production of arena spectacles, unique live music tours, theatrical performances, high-caliber touring exhibitions, feature films and multimedia product offerings. S2BN productions include the record-breaking, smash-hit musical *Spider-Man: Turn Off the Dark*; the 2012 Barbara Streisand tour; *Fuerza Bruta*, the multi-sensory spectacular currently in New York and touring throughout the world; *Rock of Ages*, now in its fifth year on Broadway and currently in Vegas; and *Yo Gabba Gabba! Live!*, winner of the Billboard Creative Content Award which remains one of the most popular children's entertainment tours to date.

PREMIERE MEDIA (*Producer*). Founded and led by entertainment industry veterans Todd Gershwin and Daniel Chlewich, Premiere Media is a diversified production company. Recent shows include the Broadway production of *A Night With Joplin*, the successful Gershwin tours of *'S Wonderful* and *Here to Stay*, the Harold Arlen multimedia tribute *Over the Rainbow—The Music of Harold Arlen*, the national tour of the Tony Award-winning show *Blast*, the "Inside the Big East" television series and many others.

**STAFF FOR RUDOLPH THE
RED-NOSED REINDEER: THE MUSICAL**

General Management

McCoy Rigby Entertainment
Buck Mason
Theresa Flemming Ana Lara

EXCLUSIVE TOUR DIRECTION

RIGHT ANGLE ENTERTAINMENT
Tracey McFarland Alison Spiriti

Casting Lindsay Brooks & Sharie Nitkin
Company Manager..... Christopher Holman
Production Stage Manager Marie Manning
Assistant Stage Manager Kira Alemania
Head Carpenter Dan Sylvia
Head Electrician/Video..... Seth H. I. McCumisky
Head Sound Engineer Jon Campbell
Wardrobe Supervisor Donna MacNaughton
Properties Master Melissa Jacobsen Connelly
Assistant Carpenter/Lead Flyer..... Nathan Sheffield
Assistant Electrician/Front Light..... Laura Rin
Co-Producer..... Aaron Burakoff
Assistant Sound/Ass't Flyer Sean Roach
Assistant Director/Choreographer Gretchen Dawson
Assistant Choreographer Estevan Valdes
Puppet Instruction Christian Anderson
Road Music Supervisor Abby Bolin Carlson
Dance Captain Jenna Gillespie

Production Assistants..... Lindsay Brooks,
Angie Rodriguez, Alma Rodriguez
Music Preparation Tim Splain
Legal Advisor..... Mark Waldman
Accountant Elissa Szieff
Production Photographer Jesse Ashton Photography
Merchandise Encore Merchandising
Merchandise Supervisor Joseph Boyles
Website Designer..... Goho LLC
Costumes and Puppets Hardrive Productions Inc

CREDITS

Lighting equipment provided by Pacific Coast Entertainment; sound/video equipment by Sound Advice, LLC; flying equipment by ZFX Flying Illusions; set built by Pacific Coast Entertainment. Based on the animated television special "Rudolph the Red-Nosed Reindeer" and the stage production directed and conceived by Jeff Frank and First Stage. Script adaptation by Robert Penola. Arrangements and orchestrations by Timothy Splain. Scenic and puppet designs by Brandon Kirkham.

"Rudolph the Red-Nosed Reindeer" animated television special adapted from a story by Robert L. May and the song by Johnny Marks, music and lyrics by Johnny Marks. All elements © and TM under license to Character Arts, LLC.

Special Thanks

Dan Sher, Joe Spaulding, Michael Szczepkowski, Patrice Cleaves, David Fay, Scott Galbraith, Ric Waldman, Kathleen O'Brien and Christi Dortch



The Director/Choreographer is a member of the Society of Stage Directors and Choreographers, Inc., an independent national labor union.




OPRY MILLS®
A SIMON CENTER



SPREAD LOVE

J.CREW FACTORY MICHAEL KORS FACTORY LEGO SAKS FIFTH AVENUE OFF 5TH H&M

OPRYMILLS.COM



BEST SEAT IN THE HOUSE

CUSTOM HOMES | REMODELING | INTERIOR DESIGN



START BUILDING YOUR
DREAM HOME TODAY.
GUARANTEED PRICING



615.309.8200

CASTLEHOMES.COM

“THEY SAVED MY LIFE”

—DUANE EDDY

**AT WILLIAMSON MEDICAL CENTER, OUR
STORY IS BEST TOLD BY OUR PATIENTS.**

They have been here. They know us well.

To Deed and Duane Eddy, Williamson Medical Center is where Duane's life was saved when he suffered an abdominal aortic aneurysm. What started out as back pain ended with Duane collapsing at our front door. One more red light and he wouldn't have made it, his doctors told him.

What happened over the next few days, the Eddys describe as a symphony. Nurses, doctors and hospital staff working together to produce a beautiful outcome that meant Duane walked out of the hospital and back on stage where he belongs.

We want to hear your story.

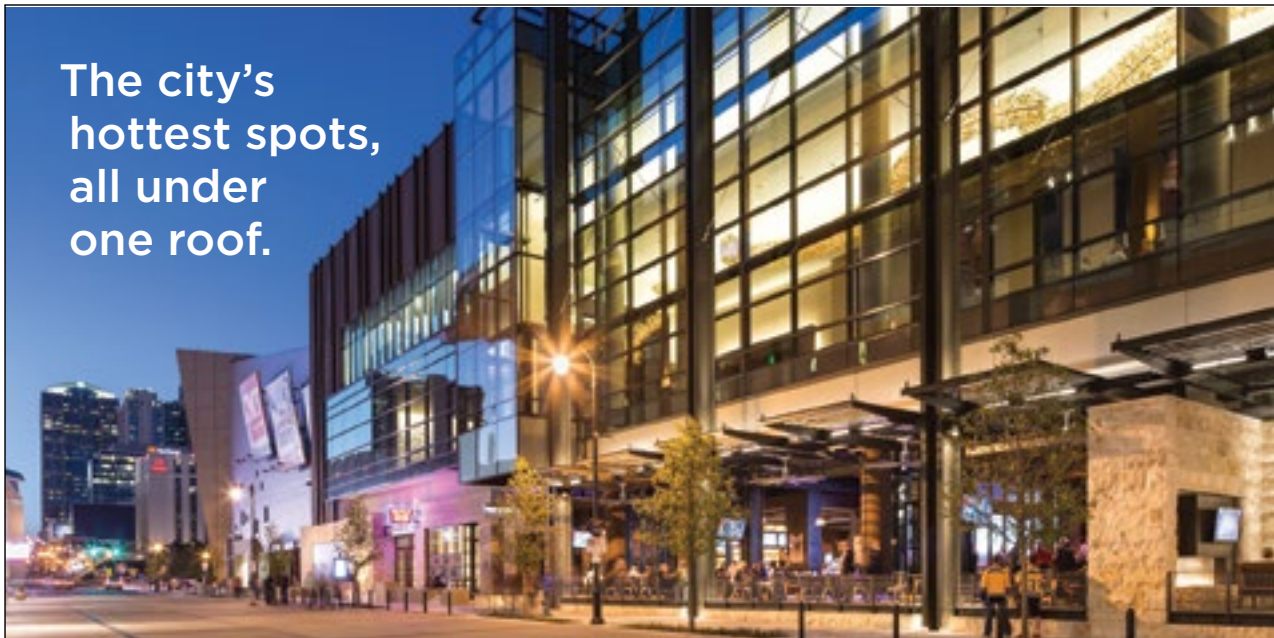
#MYWMCSTORY
MYSTORY@WMED.ORG



4321 CAROTHERS PARKWAY • FRANKLIN
williamsonmedicalcenter.org



The city's
hottest spots,
all under
one roof.



Discover a variety of culinary delights and escape to one of the only full-service spas downtown. Connected to the Country Music Hall of Fame and Museum and adjacent to the Music City Center. We're ready for you Nashville — like nothing you've ever experienced before.

Bob's Kitchen
Steak & Chop House

Notes



MOKARA
★ SPA

OMNI  **HOTELS & RESORTS**
nashville

BARLINES
NASHVILLE, TENNESSEE

BONGO
JAVA • NASHVILLE



No Mystery Here

Just great community banking.

*And you don't have to be a
master sleuth to find it.*

13 Nashville area locations


FirstBank
www.FirstBankOnline.com 



Introducing the new Children's Hospital
at TriStar Centennial.



**Bigger isn't always better.
Fast and friendly can be better.**

That's our approach at the new Children's Hospital at TriStar Centennial. The wait times in our ER are short, with pediatric care available 24/7. Our highly experienced pediatric specialists put healing as their top priority. And our care is personal, delivered with a smile and in close coordination with your child's pediatrician.

We're not the biggest in town, but for many children and their parents, that's what makes us a better choice.

TheChildrensHospitalNashville.com

BLAIR **50** YEARS

Blair Concert Series 2014-2015

The Blair School of Music,
celebrating 50 years
making music in Nashville

For information about our free faculty
and student performances,
guest artists, lectures, master
classes, and more,
visit the Blair website at
blair.vanderbilt.edu

VANDERBILT  Blair School of Music

2400 Blakemore Avenue • Nashville, TN 37212

Complimentary valet parking and
FREE self-parking for most events



Build a Customized Drees Home Anywhere

Whether you already own a lot,
need help finding a site, or have a
particular property in mind, Design
Gallery Homes makes it easy to build
a customized home anywhere you
want to live.

- Firm contract pricing
- Save thousands with no construction loan
- One-stop selections process
- Formal follow-up program

Homes from the \$270s to the \$800s,
plus home site

For a free lot evaluation or to learn more, call
(615) 376-9498 or visit dreesonyourlot.com



DESIGN
GALLERY
HOMES
by Drees



©2014 Drees Premier Homes, Inc. All Rights Reserved.



 **NOAH LIFF
PERA CENTER**

Weddings + Events
for 30 - 300

Perfect for **YOUR** special day!

615.832.5242
noahliffperacenter.com

It didn't take long after the opening of our Pharmaceutical Sciences Research Center for its impact to be felt across the community and even further. Yes, it was a milestone as a significant teaching facility, but even more important was that it represented our continued move in recent years into the research arena. In fact, the College of Pharmacy just received the university's first National Institutes of Health grant for research over the next five years which could impact breast cancer treatment.



Impressive recognition for a university of our size. But not surprising, given our commitment to creating far-reaching science and health sciences programs with a mission to benefit others. From our highly ranked pharmacy and nursing schools to a new master's in pharmacy informatics and a developing physician's assistance program, we're strengthening our longtime reputation for graduating students who academically and spiritually have what it takes to make a difference.

FOR THE FIRST TIME, OUR PHARMACEUTICAL RESEARCH IS BEING TAKEN FOR GRANTED.



We have faith in your future.™



Elevating education to a fine art.

It should come as no surprise that a school known for its academics is equally recognized for its fine art programs. Whether art, chorus, band, drama or theater, students are able to discover and pursue their own creative talents in new and exciting ways. As part of Lipscomb University, they are also able to do it on a much larger stage with access to first-class art studios, a variety of performance venues and collegiate-level instructional experiences.

Our choruses continue to receive high honors and top state rankings, outstanding musicals are performed year-round and, most recently, our band received superior ratings and was asked to perform at the state concert festival held at Vanderbilt's Blair School of Music.

Come by the campus for a tour, meet a few of our faculty or attend an upcoming information session. See just how we elevate our students to reach their potential...and beyond.

For More Information:

Pre-K through 4th grade: 615.966.6320

Middle and High Schools: 615.966.6409



lipscombacademy.org

You bank with people.

CapStar's Private Banking team knows what makes Nashville tick. It's a city where a handshake still matters. Where looking people in the eye and delivering on a promise isn't old-school, it's the expectation. After all, it's not just your money on the line, it's our reputation. That matters. You matter. And that's our matter of fact way of saying we'll deliver a smarter, more personalized banking experience than the other guys.



capstarbank.com





His secret to a blissful marriage?

Total hip replacement.

And a shared passion.

Nothing *shall be impossible.*



**Saint Thomas
Health**

Share in their passion at
STHealth.com/joint


anatra jewel



anatrajewel.com

6027 hwy 100
nashville tn. 37205
615-352-9696

We're Not Getting Older, We're Getting Better.

Blakeford offers a complete spectrum of options for independence, community, and quality care for older adults. Blakeford is the premier provider of senior lifestyle possibilities in the greater Nashville region.



BLAKEFORD
—B—



Call **615.665.9505** today for more information or visit **Blakeford.com**

Blakeford At Green Hills

| Blakeford At Home

| LiveWell By Blakeford

*"There's something
special about this place."*



615.292.9465

www.ctlk.org/school

**Christ the King
School**

Applications Accepted Year-Round
PREKINDERGARTEN THROUGH GRADE 8

**"The true meaning of life is to
plant trees under whose shade
you do not expect to sit."**

— Nelson Henderson

Children are starving.

From South America to Africa...

No food today means no
hope for tomorrow.

Choose to make a
difference.

YOU can save a
child's life today.

YOU can give him
hope for tomorrow.

Please help us help them.



Just Hope
INTERNATIONAL



Visit us at **www.JustHopeInternational.org**
PO Box 2088 • Brentwood, Tennessee 37024

IN THE FUTURE YOU'LL HAVE AN
AMAZING WEBSITE



CALL US TODAY

BECAUSE TOMORROW
IS THE FUTURE
AND
WE PROBABLY NEED TO GET STARTED

615.370.1530

ICGLINK

www.ICGLINK.com

NASHVILLE
BLINDS & SHUTTERS



Let the professionals at
Nashville Blinds & Shutters
help make your window
covering project a success.

FREE ESTIMATES For:

- Shutters
- Blinds
- Roman, solar, cellular, roller,
and natural shades
- Draperies and soft treatments

Serving Davidson and all surrounding counties

 **A+**

615-863-5065

www.NashvilleBlindsAndShutters.com

Art Dance Music Theatre

Watauga Arts Academy

a summer arts camp for
high school students

June 14-27

2015 Austin Peay
State University
Clarksville, Tenn.

apsu.edu/watauga

For more information about our camp,
please contact us: **931.221.7876** or
watauga@apsu.edu 

APSU does not discriminate on the basis of race, color, national origin, sex,
disability, or age. For inquiries regarding non-discrimination policies, contact
nondiscrimination@apsu.edu.



**CHRIST
PRESBYTERIAN
ACADEMY**



2014 *Beauty and the Beast*, Royal Shakespeare Company Rendition by Laurence Boswell

Preschool-12 | Co-Educational | Exemplary Academics | Award-Winning Fine Arts | Competitive Athletics | Christ-Centered Worldview

cpalions.org

2323-A Old Hickory Blvd. | Nashville, TN 37215 | 615-373-9550



PAUL VASTERLING, Artistic Director

SWAN LAKE

OCT. 17-19, 2014

TPAC'S JACKSON HALL

NASHVILLE'S NUTCRACKER

DEC. 6-23, 2014

TPAC'S JACKSON HALL

ATTITUDE

FEB. 13-15, 2015

TPAC'S POLK THEATER

PETER AND THE WOLF

FEB. 14, 2015

TPAC'S POLK THEATER

A MIDSUMMER NIGHT'S DREAM

APR. 24-26, 2015

TPAC'S JACKSON HALL

CLOWNS AND OTHERS

MAY 10-17, 2015

THE MARTIN CENTER
FOR NASHVILLE BALLET

EMERGENCE

MAY 14-16, 2015

THE MARTIN CENTER
FOR NASHVILLE BALLET

TICKETS:

NASHVILLEBALLET.COM
or (615) 782-4040

14/15
SEASON



BELMONT
UNIVERSITY



FROM HERE TO ANYWHERE

School of Music Audition Dates for Spring/Fall 2015

UNDERGRADUATE:

November 8, 2014 / January 10, 2015 / January 24, 2015

February 7, 2015 / March 21, 2015 (*Admission only*)

GRADUATE:

November 8, 2014 / January 23, 2015 / February 13, 2015 / February 27, 2015

WWW.BELMONT.EDU/MUSIC



ST. CECILIA ACADEMY



Discover what all the excitement is about at St. Cecilia Academy.

www.stcecilia.edu



Rooted in faith · Rich in excellence · Realizing every girl's potential since 1860

4210 Harding Pike Nashville, TN 37205 615.298.4525

The Perfect ENCORE.

Molten Chocolate Cakes
Housemade Gelato
Inventive desserts
Artisan Grilled Cheese
Gourmet Coffee
Wine
Craft Beer
Cocktails

GOOZY
dessert bar & cafe

Village Green Shopping Center
4117 HILLSBORO PIKE, NO. 104
NASHVILLE, TN 37215 | 615.297.0274
gotogoozy.com

*Why pay three times
more for the same exam?*

CT • MRI • Ultrasound



X-ray • Dexa • Mammography

Like us on Facebook to
enter to win 2 tickets
to Wizard of Oz!

[www.facebook.com/
OutpatientDiagnosticNashville](http://www.facebook.com/OutpatientDiagnosticNashville)

Outpatient Diagnostic Center
of Nashville

(615) 327-9550
337 22nd Avenue North, Nashville, TN 37203

EVEN THREE WISHES WON'T GET YOU WHAT YOU WANT.



That is, if what you desire is an office that runs efficiently
and technology that gives you the power to work
wonders. Because when it comes to a smooth running
operation, magic just doesn't cut it.



For technology that powers your business, call your local RJ Young
representative at 615.255.8551 or visit us online at RJYoung.com.

RJYoung | *Your productivity is our mission.*

eat up.

Taste an *original*
production at more than
50 locally owned,
independent restaurants.



NashvilleOriginals.com



Ezell-Harding
CHRISTIAN SCHOOL



Take hold of your child's future.

Exemplary Academics • Family and Faith Based
Diverse Student Body • Championship Winning Athletics

www.ezellharding.com

Jason Tucker Photography

**"I AM
A MEMBER."**

ART, MUSIC, FILM & MORE. JOIN TODAY.

Join the Frist today – being a member truly is a great value. Whether you visit us a lot or just a little, come alone or with the whole family, there's a Frist membership for everyone. To join or for more information, visit fristcenter.org/membership.

Frist Center for the Visual Arts • Downtown Nashville
fristcenter.org • 615-244-3340





TYPE, 26" x 40"

Jim Sherraden



Quilted One Sheet, 40" x 26"

Jim Sherraden



HALEY GALLERY

@hatchshowprint   #HSPHaleyGallery

224 5th Ave. South • 615.577.7711 • Visit HatchShowPrint.com for more information.



Privileged
JOURNEYS™

Personally crafted vacations
for discerning travelers

In Style
In the Know

Nashville is home to Privileged Journeys, your inside connection to the world of luxury travel. Our VIP advisors will orchestrate a personally crafted vacation in harmony with your desires ensuring your valuable down time is carefree and well spent.

Contact us today and let our connections help you make yours.



TRAVELINK
Luxury Division



TRAVEL

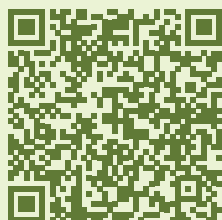
- Ranked in Travel Weekly's Power List 2012, 2013, 2014
- Ranked in Nashville Business Journal's Fastest Growing Companies

404 BNA Drive • Suite 650 • Nashville, Tennessee 37217
888-920-4977 • privilegedjourneys.com



Our goal is to become
the most innovative Alzheimer's
care community in the nation –
a campus that integrates evidence-based practices, and
disseminates them to elevate care throughout the United States.
Learn how we'll be improving lives at abesgarden.org



Photo by Raeanne Rubenstein



OPENING
SUMMER 2015

615.522.5274 • abesgarden.org  



Pucker up!

**Inspire kisses
with TPAC gifts this year.**

The gift of live performance makes memories to last a lifetime and supports TPAC's non-profit mission.

Available in any denomination and redeemable for any performance

at TPAC or War Memorial Auditorium, from Broadway musicals to rock concerts, our gift certificates always get applause.



Check out all our show-stopping gift ideas!

TPAC.ORG/Gift

615-782-4040 • TPAC Box Office Downtown



Spend your holidays at TPAC

Celebrate with your friends and family now

at Tennessee's largest performing arts center in the heart of Nashville.
Attend one of our festive shows at TPAC or War Memorial Auditorium!

Nashville Rep's A CHRISTMAS STORY, November 28 – December 21

Nashville Ballet's NASHVILLE'S NUTCRACKER, December 6-23

WMA Presents MOON TAXI, December 31

Tickets to these shows and more are on sale now

TPAC.ORG/Shows • 615-782-4040



**Diana DeGarmo and Ace Young in
JOSEPH AND THE AMAZING TECHNICOLOR DREAMCOAT
FEBRUARY 17-22**

"Joseph and the Amazing Technicolor Dreamcoat thrills at PlayhouseSquare with Diana DeGarmo, Ace Young, and subtle updates... An exuberant success that stays true to all of the original's joyfulness, humor, and fantastic songs while subtly updating it for a 2014 audience."

- Cleveland Plains Dealer

One of the most enduring shows of all time, Tim Rice and Andrew Lloyd Webber's *Joseph and the Amazing Technicolor Dreamcoat* is the irresistible family musical about the trials and triumphs of Joseph, Israel's favorite son. Directed and choreographed by Tony Award-winner Andy Blankenbuehler, this new production will feature Broadway/television star Diana DeGarmo (*Hairspray*, *Hair*) as The Narrator and Broadway star Ace Young (*Grease*, *Hair*) as Joseph. Retelling the Biblical story of Joseph, his eleven brothers, and the coat of many colors, this magical musical is full of unforgettable songs including "Those Canaan Days," "Any Dream Will Do," and "Close Every Door." Book your tickets and be part of the magic!

**Tickets are on sale now at TPAC.ORG/Dreamcoat, 615-782-4040,
or the TPAC Box Office. Groups of 10 or more call 615-782-4060.**

**Family Fun on Opening Night at KIDS' NIGHT ON BROADWAY
Tuesday, February 17. Activities in lobby beginning at 6:00 p.m.**

**Special ticket offer this night only:
50% off tickets in price levels 2 through 4 with promo code KIDS**

Offer valid for February 17 performance of *Joseph and the Amazing Technicolor Dreamcoat*. Minimum 2 tickets, limit 6 per customer. Seating is limited. Offer is not valid for previously purchased tickets. Event, date, time, guest artist, and repertoire are subject to change. TPAC.org is the official online source for buying tickets to TPAC events. Cannot be combined with other offers.

Presented by

Bank of America 



**NewsChannel 5
NETWORK**
THE TENNESSEAN

BLUE MAN GROUP

Children attend performances here each year through TPAC Education's annual Season for Young People (pictured, *Pinocchio*, 2013).
Blue Man Group is one of the shows on TPAC's schedule this year that families will attend together. Photo by Mimosa Arts.

BLUE MAN GROUP RETURNS BY POPULAR DEMAND

JANUARY 6-11

**Tickets are on sale now at TPAC.ORG/BlueMan, 615-782-4040,
or the TPAC box office. groups of 10 or more call 615-782-4060.**

BRING THE KIDS

"We had a fantastic time! Not only is the performance very kid-friendly, it beautifully straddles the line between humor geared toward adults and kid entertainment, making it an enjoyable experience for all ages."
- Jen, www.adventurousmoms.com

FINALLY...

A SHOW THAT CAN BE FULLY ENJOYED BY BOTH PARENTS AND KIDS.

90 minutes with no intermission

Packed with insane music, art, color, and humor

The Blue Men don't speak - they use non-verbal means,
like music and actions, to communicate.

Free "Meet and Greet" in the lobby after the show -
take photos with the Blue Men and our incredible musicians

Recommended for kids ages 3+

BUT DON'T TAKE OUR WORD FOR IT...

Here's what parents across the country are saying:

"The excitement was non-stop, and I literally heard my husband and children laughing out loud. Really out loud! All I can say is GO SEE THIS SHOW! Bring your kids, bring your partner, bring your parents, bring your friends... Go! You won't regret it!"

- Michele at Macaroni Kid

"Going to the Blue Man Group performance was the most fun my family has had in ages, and that's really saying something, because we've been doing a whole lot of fun springtime activities in Boston lately. During the Blue Man Group show, we laughed until we were blue in the face (ha) and a week later, my kids haven't stopped talking about how cool it was."

- Tara at Mommy Poppins

Presented by



Thirsty?

Be sure to visit the beautiful Bar Seven located on the Orchestra Level of Jackson Hall, or any of our bars throughout the lobbies!



Uniquely Nashville.

Find our city's best arts and entertainment bets, can't-miss events, artist interviews, society news and all things unique to Middle Tennessee **every Sunday inside Portfolio** and online at Tennessean.com.



THE TENNESSEAN

Subscribers: Tennessean.com/Register • **Non-Subscribers:** Tennessean.com/Subscribe

You can get great deals on Broadway, concerts, and more!

Does your employer, civic group,
or school offer TPAC discounts?
Contact us to find out.

**TPAC has four great programs
that help you save money:**



BLUE MAN GROUP

Presented by

GRANDCENTRAL
BARTER

Blue Man Group will thrill Nashville with its high-octane theatrical experience January 6-11 at TPAC. Escape the ordinary and surround yourself in an explosion of comedy, music, and technology. If you've never seen *Blue Man Group*, it's a must-see. If you're already a fan, don't miss it.

**BRING A GROUP OF 10 OR MORE
to this outrageous show!**
**E-Mail Groups@TPAC.org or call
615-782-4060.**

THANK YOU

to RUDOLPH THE RED-NOSED REINDEER: THE MUSICAL audience members who participated in TPAC's Group Sales programs and purchased tickets by December 2, 2014.

Abenity
Bass, Berry & Sims
Belmont University
Bethel Family Academy
Blue Cross Blue Shield of TN
Butler's Run, LLC
Mrs. Carla G Tinnon
Caterpillar Financial
Cecil and Juliette Allen
CMT
Dell
Delta Dental
Delta Dental Partners
Diana Rae's Voice &
Performance Studio
Guaranty Trust Company
HCA Healthcare

Heritage Home School Group
Jim and Lucie Bosi
Ms. Kalinda Clippard
The King's Daughters School
Lifeway
Ms. Margie Hendon
Metro Nashville
Airport Authority
Mrs. Milly Edwards
Motlow State
Community College
Mt. Juliet Family and
Cosmetic Dentistry
MTSU
Nashville State
Community College
Nissan

Probation Services of TN
Mr. Rayme Phillips
Regions Bank
Ms. Sandy Hubbard
Sherri Huenink
Skyline Medical Center
Mrs. Stacey Hagewood
StoneCrest Medical Center
Tennessee Baptist Adult Homes
Thomas Schaeffer
TPAC Friends
US Military Members
Vanderbilt University
YMCA of Middle Tennessee
Young Professionals
Chamber of Nashville

Sinatra

FOREVER

starring *Rick Michel*



FEBRUARY 13 TICKETS ARE ON SALE NOW!
WMAROCKS.COM • 615-782-4030
8:00 P.M. 301 6TH AVENUE NORTH, NASHVILLE



WMARocks.com is the official online source for buying tickets to War Memorial Auditorium events.

PLEASE HELP TPAC TO
RECYCLE.

**PLASTIC BOTTLES
& PLAYBILLS**

TPAC invites you to *take home one*
playbill for the family and *recycle the other.*

**TPAC playbills are online at
TPAC.ORG/CenterStage.**



LIVE GREEN:
Playing our Part

Recycling containers for plastics
and paper also are located along
beautiful **Deaderick Street**, the first
certified green street in Tennessee.



The Tennessee Performing Arts Center is an accessible
facility with a variety of services. For more information,
see page 64 of this playbill or visit TPAC.org.

The Tennessee Performing Arts Center
gratefully acknowledges

2014-15 SPONSORS

Broadway Series Title Sponsor:



Sustaining Partners:



BUTLER | SNOW



Official Sponsors:



Presenting Sponsors:

Bank of America



NEWSEUM INSTITUTE
FIRST AMENDMENT CENTER

REGIONS

Community Sponsors:



BROWN-FORMAN



THE TENNESSEAN



TPAC gratefully acknowledges the following organizations and individuals for gifts and pledges received from December 2013 - December 2014.

These gifts support TPAC Education, performing arts programs, and special projects. For more information about donor benefits and sponsorship opportunities, or to notify us of any errors or omissions, please contact TPAC Development at 615-687-4315.

BOARD OF DIRECTORS

Dr. Kathleen Airhart
C. Dale Allen
Barbara Bovender
John E. Cody
Ronald L. Corbin
Beth S. Courtney
Ansel L. Davis
Emanuel J. Eads
Donna G. Eskind
Rod Essig
Leslie Fram
Charles J. Hall
J. Reginald Hill
Martha Ingram
Christine Karbowiak
Beverly Keel
Bill Lynch
Melvin Malone
Marcus McKamey
Nathan Poss
Jim Schmitz
Larry R. Stessel
Andrew Tavi
Rhonda Taylor
Claire W. Tucker
Dr. Philip Wenk
Gail Williams
Uzi Yemin

GOVERNMENT, CORPORATE, AND FOUNDATION CONTRIBUTORS

as of December 2, 2014

\$50,000+

Bank of America
CMA Foundation
The Community Foundation of Middle Tennessee
Delta Dental of Tennessee
HCA Foundation on behalf of HCA and the TriStar Family of Hospitals
Metro Nashville Arts Commission
Nissan North America, Inc.
Raymond James
The Tennesseean
Tennessee Arts Commission

\$25,000 - \$49,999

Butler Snow
Corrections Corporation of America
Dollar General Literacy Foundation
Monell's Dining and Catering
NovaCopy
Regions Bank
Vanderbilt University
XMI Commercial Real Estate

\$10,000 - \$24,999

Anonymous
511 Group, Inc.
Altria Companies Employee Community Fund
BlueCross BlueShield of Tennessee
Bridgestone Americas Tire Operations, LLC
Bridgestone Americas Trust Fund
Classic Party Rentals
Coca-Cola Bottling Company Consolidated
Community Health Systems
Delek U.S. Holdings
Dollar General Corporation
Gannett Foundation
Grand Central Barter
Landis B. Gullett Charitable Lead Annuity Trust
Ingram Industries
Ironhorse Farms
Kentucky Downs
The Memorial Foundation
National Endowment for the Arts
Mary C. Ragland Foundation
Lois Ransom Charitable Trust

Ryman Hospitality Properties Foundation

\$5,000 - \$9,999

Adams & Reese LLP
AT&T
Baulch Family Foundation
Bonnaroo Works Fund
The Broadway League
Brown-Forman
Caterpillar Financial Services Corporation
Earl Swensson Associates, Inc.
East Tennessee Foundation
Ernest and Selma Rosenblum Fund for the Performing Arts
Ernst & Young LLP
Joel C. Gordon & Bernice W. Gordon Family Foundation
HCA - Caring for the Community
Jimmy Choo Nashville
JohnsonPoss
MEDHOST
Middle Tennessee Performing Arts H.O.T. Support Fund
Music City Hall, LLC
Nashville Convention and Visitors Corporation
Publix Super Markets Charities, Inc.
The Rechter Family Fund*
Sargent's Fine Catering
South Arts
SunTrust Bank, Nashville
Waller
Washington Foundation
Woodmont Investment Counsel, LLC

\$2,500 - \$4,999

Aladdin Industries Foundation, Inc.
Athens Distributing Company
Best Brands, Inc.
CapStar Bank
Creative Artists Agency
E.J. Sain Jewelry Company, Inc.
Enterprise Holdings Foundation
Samuel M. Fleming Foundation
ForceX, Inc.
Patricia C. & Thomas F. Frist Designated Fund*

Grand Avenue
Minuteman Press
Nashville Predators Foundation

\$1,500 - \$2,499

The Atticus Trust
Ezell Foundation
Green Door Gourmet

\$500 - \$1,499

American Paper & Twine Charitable Fund
Amerigo
Civic Center Foundation, Oklahoma City
EBS Foundation
The Franklin Center for Skin & Laser Surgery
The Dorothy Cate and Thomas F. Frist Foundation
Hampton Inn and Suites Nashville-Downtown
Kraft CPAs
Loews Vanderbilt Hotel Nashville
Nashville Center for Aesthetic Dentistry
Peter Nappi
Purity Foundation
Raven Tools
Rodney Mitchell Salon
Rhonda and Richard Small Family Philanthropic Fund
Wright Travel Agency

\$250 - \$499

Bennett Galleries
Buford Lewis Company

C-Tech Controls
Center for Executive Education at Belmont University
Dance World Of Nashville
Fleet One, LLC
French Lick Resort
Law Office of Michael K. Williamson
Louisiana-Pacific Foundation
Millennium Security Services
Miss Kitty's Bed and Bath

INDIVIDUAL CONTRIBUTORS as of December 2, 2014

CHAIRMAN'S CIRCLE \$10,000 +

Julie and Dale Allen
Mr. and Mrs. Jack O. Bovender Jr.
Anita and Larry Cash
Eva-Lena and John Cody
Martha R. Ingram
Crispin and John Menefee
Yaara and Uzi Yemin

PRODUCER'S CIRCLE \$5,000 - \$9,999

Mr. and Mrs. David J. Baulch
Mr. and Mrs. Robert E. Baulch Jr.
Mr. and Mrs. Robert E. Baulch III
Jana and Ansel Davis
Dr. and Mrs. Jeffrey Eskind
Beth Fortune and Debbie Turner
Mr. and Mrs. Joel C. Gordon
Tracy Guarino and Joseph Calabrace
Chuck Hall

John Reginald Hill
Mrs. Victor S. Johnson Jr.
Mr. and Mrs. Victor S. Johnson III
Mr. and Mrs. Bill Lynch
Kathleen and Tim O'Brien
Mr. and Mrs. Ben R. Rechter
Judy and Steve Turner
Neil and Chris Tyler

APPLAUSE SOCIETY \$1,250 - \$4,999

Mr. and Mrs. Craig J. Andreen
Evadne and Mark Awh
Melinda and Jeff Balser
Dr. Steven Bengelsdorf
Dr. and Mrs. Frank H. Boehm
William H. Braddy III
Suzanne Bradford and Judy Lojek
Melvin and Shirley Butler
Gary Bynum
Andrea Carlton
Drs. Toni and Timothy Carlton
Anthony and Diane Carroccia
Vikki E. Carter
Mr. and Mrs. Christopher John Casa Santa
Elizabeth and Jerone Cecelic
Mr. and Mrs. William S. Cochran
J. Chase Cole
Marjorie and Allen Collins
Colleen Conway-Welch
Ronald L. and Brenda J. Corbin
Mr. and Mrs. Richard Courtney
Kelly Crockett
Mary Britton Cummings and Joseph Cummings
Dr. Titus Daniels and Mr. Will Hester
Mildred and Richard Darragh
Marty and Betty Dickens
William Michael Douglas
Dr. Peggy S. Duke
Barbara and Emanuel Eads
Wendy and Mark Eddy
Billy and Jamie Eskind
Jane and Richard Eskind
Laurie and Steven Eskind
Shary and Rod Essig
Robert Evans
Linda and Miles Ezell

Robert Finn and Gary Lingofelter
Stacie Flood-Popp and Robert Popp
Mrs. Charles C. Fowler Jr.
Leslie Fram
Dr. and Mrs. Thomas F. Frist Jr.
John Mack Green
Carolyn and Terry Hamby
Becky and Kent Harrell
Kevin Hartley
Lisa Hartman
Dr. and Mrs. Stephen L. Houff
Rick Isaacson
Teresa and Andre Jaeckle
Timothy and Stefanie Jakobs
Craig and Mercy Jaramillo
Susan and Bill Joy
Ray and Rosemarie Kalil
Jacqueline Kelly
Lee and Glenda Kraft
Michael D. and Kimberly M. Law
Sandi and Tom Lawless
The Honorable Thomas and Terri Lewis
George and Cathy Lynch
Dr. Spencer Madell
Mr. and Mrs. William Maksymowicz
Sheila and Richard McCarty
Mr. Raymond McCay
Marcus McKamey
Mr. and Mrs. Michael Ray McWherter
Robert and Yin Mericle
Alisa Miles
Lisa and Timothy Moore
Robert F. Moser
Teresa and Mike Nacarato
Holly Noble
Nancy and Mark Peacock
Randall Phillips
Cathy and Craig Polkow
Mr. and Mrs. Dale W. Polley
Carla Robertson
Mark and Carla Rosenthal
Dr. Norman Scarborough and Ms. Kimberly Hewell
Dr. and Mrs. Timothy P. Schoettler
Charles Selke
Cameron C. Simmons
Catherine and Tom Sinkewicz
Sloan Family
Debbie and Scott Snoyer
Mr. and Mrs. James R. Stadler
Ronnie Steine and Beverly Keel
Deborah and James P. Stonehocker
Lauren and Andrew Tavi
Mona and David M. Tehle
Mr. and Mrs. Jim Tothacer
Byron and Aleta Trauger
Dianne and Tom True
Claire Whitfield Tucker
Linda and Dirk Wales
Lyn N. Walker
Dr. and Mrs. Philip A. Wenk
Mrs. John Warner White
Donald R. Williams and Richard W. Zelek
Tracy and Aaron Wimsatt
Jim and Maureen Wynalek
Monte Yocom
Denise and Victor Zirilli

DIRECTOR'S CIRCLE \$700 - \$1,249

Dr. and Mrs. Jeffrey T. Adams
Christine Barggren
Mary Bass
Jason Bradshaw and Bob Deal
Mr. and Mrs. Frank M. Burnstead
Beth and F.J. Campbell
Jane and Bill Coble
Ms. Andrea Conte and Gov. Phil Bredezen
Alice and Walton Denton
Debbie and Stephen Dismukes

Robert Eisenstein
Mr. and Mrs. Jere M. Ervin
Judy and Tom Foster
Jeanne Gavigan
Julie Gillen
Mr. and Mrs. Gary Glover
William and Kathy Gracey
Jane Greenway
Cheryl and Michael Hays
Ronda and Hank Helton
Cameron Hyder
Arthur Kirkby
Diane Kruse
Mr. and Mrs. Randolph M. Lagasse
Melvin Malone
Theresa and Albert Menefee
Darrell Merryman and
Jennifer Wright
Kent and Alice Ann Nagel
Julie Owens
Adam Perkinson
Mr. and Mrs. Philip M. Pfeffer
Lloyd Poteete
Mr. and Mrs. Hugh Queener
Mary Ellen and Tom Rodgers
Janet and William Schock
Brandi and Mark Smith
Mr. and Mrs. William Spehr
Joe N. and Brenda Steakley
Juris and Pam Vasilevskis
Eleanor Whitworth
David and Gail Williams

PERFORMER'S CIRCLE \$300 - \$699

Anonymous (2)
Linda Adams
Linda Albertalli
Lainie and Roger Allbee
Gay and Laurence Alvarez
Mr. and Mrs. Carter Andrews
Dreana Arguello
Pamela Ark
Angela Bagsby
C. Nelson Bailey
Carolyn and Kirby Baker
Dolores A. Barnett
Sara and Milton Bartley
Gary Barton and Steve Manchester
Dana and Martin Bauguess
Linda and Blaine Baum
Betty Beasley and Melissa Ott
Piper and James Bell
April and Michael Berman
Mrs. Annie L. Berry
Joanne Bertone
Diane R. Berty
Cherry and Richard Bird
Rose and Allan Bleich
Patricia J. Bloomfield and
Wayne Irvin
Allison and Joe Boever
Mr. and Mrs. Paul Boklage
Mary Bolte
Jerry Boswell
Keith Bowman and James Lassiter
Patricia Bradford and
Dr. Michael Batty
Elizabeth Brandau
Dr. and Mrs. Barry W. Brasfield
Andy Brashier
Jo Ann Brassfield
Matthew J. Brooksher and
John W. Davis
Lorrie K. Brouse
Patsy and G. William Brown
Tiffany and Terry Brown
Cari Buckingham
David F. Burns
Dr. and Mrs. E. James Burton
James and Annette Butler
Mrs. Lillian Caldwell and
Mr. Joe Caldwell
Russ and Penny Campbell
Nancy and Charles Cardwell
Michael and Pamela Carter
Jeff and Kathy Cartwright
Gigi Chase
Mr. and Mrs. Roy E. Claverie Sr.
Mike Clutts
Jennifer M. Cochran
Kathleen Cockshaw

Jerry and Yvonne Collier
Sam and Debbie Collins
Holly and Gabe Coltea
Joel and Rebecca Cooper
Sharon Cooper
Virginia Hixon Corbitt
Erika L. Crawford and
Tiana Crawford
Mr. and Mrs. James A. Croy
Kevin and Mitzi Curlee
Kimberly L. Darlington
Nancy and Bob Darnall
Robert and Ruth Darula
Anna Catherine Davenport
Joy Day
R. Allen Decuyper and Steve Sirls
Teri S. Devries
George deZevallos
Tim and Tiffany Dodge
Mr. and Mrs. Robert Doochin
Christi Dortch
Myrtianne and Nevin H. Downs
Bill and Linda Duncan
Ernest and Mitzi Dunkley
Pamela and David Duquette
Lisa and Robert D. East
Amy Eskind
Jeff Eubanks
Olivia and Bruce Evans
Jill Fainter
Julie Fay
Jenni and Henry Feldhaus
Mr. and Mrs. John D. Ferguson
Holly and Andrew Feris
Virginia Fontanella
Kimberley and Ryan Foster
Martha Fouce
Joan and Dick Fox
Debi and Lance Fusacchia
Dr. and Mrs. Robert Garza MD
Dr. Barry W. Goley and
Grant W. Goodman
Tracy and Robert Good
Kim and Dan Gordon
Adam and Ruth Graveno
David B. Gray
Don Gray
Cathy Guenther
Toni Guffey
Cathy Gunn
G. T. Guthrie
Donna and John Hagan
Carl and Connie Haley
Mr. and Mrs. Michael J. Harbers
Kelli Haywood
Dr. and Mrs. Hugh L. Head III
Jim Hearn
The Helm Family
Arthur and Loyda Henderson
Mr. and Mrs. Kevin R. Hennessy
Richard Hensley
Dena Hershkwitz
Nancy Hershkwitz
Winston C. Hickman Jr.
Hank and Mary Hildebrand
Shirley A. Hiltz
Chris J. Hohl
Mr. Jim Holland
Greg and Becca Hollis
Jeff and Ashley Hollis
Deborah and Donald Holmes
Joan Z. Hornberger
Joan Howard
Andrew S. Howell
Dr. and Mrs. Richard A. Howerton
David and Leslie Hudson
Sara and David Hunt
Melissa and Douglas Hunter
Mr. and Mrs. Shandy Husmann
Dr. and Mrs. Gary Jacobson
David and Michelle James
Karissa Jargo
Emily and Chris Jenkins
Fred and Kathy Johnson
Julia and Walt Johnson
Ann Jones
Jennifer D. Jones
Ed Kaiser
Christine Karbowiak and
Martin Vanek
Teresa Kersey

AVAILABLE NOW AT YOUR COUNTY CLERK'S OFFICE

\$35

BACK THE ARTS WITH THE NEW ARTS PLATE



SUPPORT ARTS IN YOUR SCHOOLS AND COMMUNITY

No need to wait until your tags expire,
you can change your license plate anytime.
Fees will be prorated.

the arts 

changing lives!

TENNESSEE ARTS COMMISSION

tn.gov/arts

arts

TENNESSEANS
FOR THE
ARTS

tn4arts.org



For more information about
specialty license plates, visit
tn.gov/revenue/vehicle.

George and Sue Kettle
Michael Kice
Nicholas Kilen
Lloyd King
Herb Knopp
Janet and James Knox
Debra and James Kovanda
Kenneth Kraft and Lucilyn Crow
Jan and Rand Krikorian
Jeff and Pam Kuhn
Dr. Robert and Lori Landsberg
Robert Lane and Emily Vandiver
Lori and Jerry Lankford
Timothy Larson
Sharon H. Lassiter
Reverend and Mrs.
Gary D. Lawson Sr.
Joe Ledoux
Christopher and Vera Lee
Sharon and Keith Lesain-Edwards
Valerie Levay and Kurt Dittrich
Jon H. Levine
Patti and Don Liedtke
Regina N. Lind
Johnny and Alice Lindahl
Rhonda and Danny Long
Nancy Lorenzi
Rhonda and Randy Lowry
Amy and George Lynch
Don and Kathy MacLachlan
Nancy MacLean
Dr. and Mrs. Samuel MacMaster
Jane and John Malatak
Kaye Martin
Robert W. McDonald
Jennifer and Robert F. McRae III
Roy D. Meadows
Louise Merritt
Mitzi and Rick Michaelson Jr.
Stephanie Milhoan
Mr. and Mrs. David Minnigan
Diana and Jeffrey Mobley
Tom and Vicki Moon
Dana Moore and Jack Isenhour
Janice B. Moore
Joann Morris
Craig and Jenn Morrison
Kim Morrow
Mr. and Mrs. John Muchukot
Jeff and Stephane Murphy
Marie Murphy
Mickey M. Murphy
Kay and Robert Musgrove
Richard Myers
Mr. and Mrs. Jack Nadeau
Wendy and Jack Neinken
Dr. and Mrs. Matthew Ninan
Kristin E. Nishanian
Agatha Nolen
Laura and Vincent Nord
Corinne J. Oreilly and
Richard Bissonette
Jeff and Meghan Owen
Wendy and Brad Owens
Timothy Pace
David and Pamela Palmer
Evetta K. Palmer
Jerry Parker
J. Russell and Phyllis Parkes
Nan Parrish
Pat Payne
Nancy and Stephen Peluso
John and Kandace Peppers
Elizabeth and Phil Perkins
Mrs. Cindy Perling
Heidi and Andrew Pflaum
Wendy and Jason Pharris
Dr. Kenneth Phelps
Susan and Lawrence Phillips
Heather and Thomas Pierce
Rose and Kip Pierce
Rodney and Holly Poling
Nathan Poss
Linda and Tim Priddy
Joyce and George Pust
Patricia and Douglas Ralls
Elizabeth and Nancy Rankin
Sibyl Reagan
David Reiland and Diane Honda
Brad and Evelyn Rhoades
Mary Richardson
Wells Richardson and Jane Bowlin

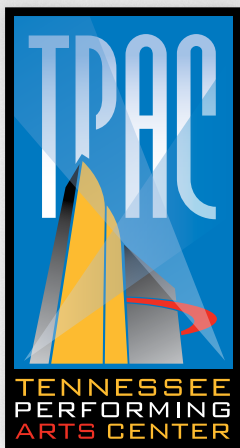
Joshua Riddell and
Elizabeth Rowland-Riddell
Paul and Marjorie Ridge
Charlotte Roberts
Evelyn and William Rodgers
Daniel and Suzanne Roke
Patricia and Craig Rothschild
Katrina C. Rucker
Lavona and Clyde Russell
Jeff Rymer
Marianne and Chris Sabis
Laurie L. Sackett and
Mary Ellen Stevens
Teresa Sadler
Madeleine and Paul Sapoch
John and Debbie Scannapieco
Jim Scherer
Jean and Stuart Schmidt
Michelle and Jim Schmitz
Susan Schuchard
Carl Schweinfurth
Pat and Marty Schweinhart
Sharon and William Schweinhart
Carol and Alvin Scott
Mr. and Mrs. John L. Seigenthaler**
Kelly and Kevin Sekuterski
Jeanne Sellars
Robert Sentz
Darenda Shannon
Carol Sharp
Debra and Harry Shaw
Sharon and Bill Sheriff
Jeffrey T. Simmons
Linda Simmons and
Ronald Runyeon
Helen Sirett and Ken Hendrix
Rhonda Small
Mr. and Mrs. Thomas S. Smith
Dr. and Mrs. Duane T. Smoot
Suzanne and Grant Smothers
Robert Sneed
Ashley Sonn
Chris and Patrick Sowada
Robert and Jane Stammer
Judy Steele
Dr. and Mrs. Walter E. Stephens
Sara and Larry Stessel
Kelly and Charles Stewart
Heidi and Greg Stogner
Joy Strange
Tracy and John Szente
Doris R. Taft
Burton Tally
Dr. F. William Taylor
Janet Taylor
Diane Thorne
Carlos Tirres
Mr. and Mrs. James F. Turner Jr.
Ms. Candy Varble
David and Deborah Vulcano
Ann and Jack Waddey
Mary Wade
Dr. and Mrs. Bill Wall III
Greta and Jim Walsh
Tim Walsh
Susan Walsworth
Richard Walters
Cynthia and Quinton Wasden
David Watson
Dr. J.J. Wendel
Chris and Beth West
Jeff P. White
Dr. and Mrs. Timothy D. White
Bradley and Susan Widmann
Dr. Brian Widmar and Brad Bennett
Dr. and Mrs. Joseph Wieck
Ouida Wilkes
Danielle Williams
Jerry B. Williams
Mr. Michael K. Williamson
Dr. William R. Wilson
Vickie and Don Wirth
Jennifer and Keith Woodruff
Scott Woods
Susan Woods
Susan S. Woods
Cliff and Amy Wright
Margaret and Ron Wright
R. Jeremy Wyatt
Sharon Yates
Kelly and Steven Yokley
Andrew L. Young

Bill and Jane Young
Mr. Jeffrey Young
William D. Young
Mr. and Mrs. Julian A. Zander Jr.
Shirley Zeitlin
Kurt Zettell II
Kerndt and Theresa Zuckowsky

PATRONS
\$100 - \$299
Anonymous (2)
Kathleen and Douglas Airhart
Edgar and Kathi Allen
Dr. and Mrs. Douglas C.
Altenbern Jr.
Dr. and Mrs. Arthur N. Anderson
Grace and Carl Awh
Carolyn and Julian B. Baker
Debra Barnes
Diane Becker
Mr. and Mrs. W. E. Bingham
Mr. and Mrs. Peter F. Bird Jr.
Anita and Michael Blackmer
Debbie Booton
Eric and Sue Broder
Emily Buatte and Sean Martin
Janice Buchanan
Joan K. Burrell
Kim and Rich Cannon
Thomas Carey
Faye Carlisle
Dr. John Jeffrey Carr
and Ms. Pamela Crowe Carr
Renée Chevalier
Nancy and Terry Clements
Kira and Jeff Cleveland
Shanna Cobble
Pim Collier
Mr. and Mrs. Charles W. Cook Jr.
Anne and Matt Corrao
Susan Cox
Dr. Jeanette Crosswhite
Dorcas Crosthwait
Mr. and Mrs. Brownlee O. Currey Jr.
Ben and Linda Davis
James V. Davis
Ken Dease and Julie Stensrud
Dr. and Mrs. Roy L. DeHart
Drs. Richard and Carol Detmer
Denise and Sam DeVane
Diana Diaz
Lee Lee and Wally Dietz
Pam Dishman
Jessica Ditto
Kathy Doman
Linda and John F. Downey
Bob and Nancy Dunkerley
Anne and Darryl L. Edmonds
Mr. and Mrs. Thomas S.
Edmondson Sr.
Dr. Doran Edwards
Teresa Ellithorpe
Nancy and Hugh Entreklin
Janice N. Evers
Cherrie Farnette
Judge Mike Faulk
Karen and Gene Fleming
Karen and David Ford
Denise and Todd Forgie
Jessie and Carolyn Foster
Sandra Freeze
Mr. and Mrs. Albert Ganier III
Amanda and Jon Gaston
Brenda Geise
Ruthann and Malcolm Getz
Althea Gill
Kathleen Glaser
Dottie Haber
Barbara and Rick Halcomb
Carl and Connie Haley
Jennifer A. Hartley
Mark Hartzog
Mr. and Mrs. Aubrey B. Harwell Jr.
Barbara Hayes
Dixie Heagy
Mr. and Mrs. Eugene Heller
The Honorable and Mrs.
Douglas Henry Jr.
Jacqueline and Craig Herrod
Sam Hirschberg
Jay and Meredith Hollomon
Mr. and Mrs. Henry W. Hooker
Collins and Tom Hooper
Martha Hooper

Donna and Michael Horton
Helen R. Houston
Sara and Bill Hunter
Sue and James R. Hurt
Danette and Matthew Idlett
Melissa Irvin
Debbie and Gary Janke
Don and Leigh Jones
Gina and Chris Keaton
Sandra Koczwar
William H. Lassiter Jr.
Mr. and Mrs. Irving Levy
Richard and Tad Lisella
Cecilia Little
Jennifer and Hank Adam Locklin
Heather and Alan Looney
Kelly and Michael Lynd
Shirley Malchow and Molly McGill
Walter D. Marianelli
Tony Marks
Henry Martin
Marilyn Martin
Stephanie and Kemp Maxwell
Al McCree / Altissimo! Entertainment
Patricia and Tony McLarty
Melissa and Darren Metz
Deborah and David Meyer
Mary and Thomas Miller
Aaron T. Moore
Tara Morrison
Melissa Mosteller and Patrick Clark
Richard Neubauer
Penny Nichting
Iris A. Nolan
Courtney Owen
David J. Owen
Chrisy Ozier
Mr. and Mrs. Todd E. Panther
Susie and Tom Perry
Laura Pitcock
Richard Pitt
Charley and Alexia Poe
Mr. and Mrs. Marshall T. Polk III
Charles and Jamie Powell
Franklin Privette
Edria and David Ragosin
Jeanie Page Randall
Ann V. Roberts
Margaret Ann Robinson
Judith R. Roney
Donna and Steven Rosenfarb
Victoria O. Ross
Joyce and Mace Rothenberg
Mr. and Mrs. J. R. Rudd
Cheryl Rudnicke
Stephani and Edward Ryan
David Sampsell
Susan Sanders and Steve Woodard
Elaina and Ronnie Scott
Viola Seebode
Charles and Bettye Seivers
Caroline and Robert Sexton
Carol Sletto
Emily Smith
Alyse and Charles Sprintz
Lelan and Dr. Yolanda Statom
Mr. and Mrs. Thomas R. Steele
Dr. and Mrs. Robert Stein
Dr. Frank W. Stevens
Bill Tate
Lisa G. Thomas
Rick and Janet Thomas
Kimberly D. Thompson
Martha and Bill Thompson
Edward Tietgens
Robert J. Turner
Frances Anne Varallo
Betty J. Vernon
Kimberly Vincent
Jane M. Wakefield
Sally Levay Walston
Darrell Waltrip
Lori Ward
Angie and Tony Weeks
Kenneth and Julia Weiss
Roberta and Steve West
Pam Whitson
Sadhna and Jim Williams
Jean and Larry Williams
Kenny and Cindy Williamson
Irene and Ridley Wills
Sarah Zhang
Roger Zinn

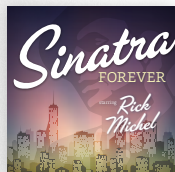
**TPAC honors the memory of John L. Seigenthaler



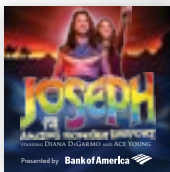
UPCOMING SHOWS INCLUDE



February 3-8, 2015



February 13, 2014



February 17-22, 2015



March 6, 2015



March 10-15, 2015



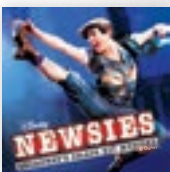
March 18, 2015



March 26, 2015



March 27-28, 2015



May 26-31, 2015

TPAC.ORG
615-782-4040

TPAC Box Office at
505 Deaderick Street



Best
pick up
line ever!



YOUR DONATION TO THE
HABITAT RESTORE MEANS
ANOTHER FAMILY WILL
LIVE THE DREAM.

DONATE

Furniture
Appliances
Cabinets
Lighting
Building Supplies
and more

www.habitatnashville/restore

615.942.1290



“I want to say
it’s ‘Live Salt’
because it’s
fresh, alive!
Buy some.”

~ Sisha Ortúzar
Tom Colicchio’s Riverpark
Restaurant, Manhattan



HAND-CRAFTED SEA SALTS
FROM 42.5000° N, 70.8583° W

ORDERS? PLEASE VISIT:
WWW.MARBLEHEADSALT.COM

WE STAY SALTY BY GIVING
ALL PROFITS TO CHARITY.

MK 9:50

EDUCATING SCHOLARS WITH INTEGRITY AND BALANCE

franklinroadacademy.com • 615.832.8845

FRANKLIN ROAD ACADEMY

Where Children
Are At Home
With The Arts

PREKINDERGARTEN THROUGH GRADE 12



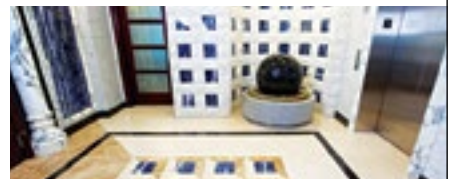
20

CELEBRATING 20 YEARS
OF PREMIERE SERVICE
1994-2014



WE'VE COME A LONG WAY.

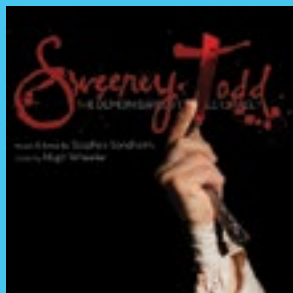
FROM WRITING OUR FIRST CONTRACT IN 1994 TO BOOKING OUR 26,000TH EVENT IN 2014,
OUR PRIORITY HAS ALWAYS BEEN TO PROVIDE IMPECCABLE DETAIL-ORIENTED SERVICE.
THANKS TO EVENT PLANNERS ALL OVER THE WORLD WHO HAVE MADE THE "PREMIERE CHOICE!"



WWW.PREMIERESPEAKERS.COM

109 INTERNATIONAL DR. STE 300 FRANKLIN, TN 37067 | (615) 261-4000

NASHVILLE REP



HOLIDAY SPECIAL

NASHVILLERE.P.ORG

the 1 YEAR RULE

if you have not...

WORN IT USED IT OR
PLAYED WITH IT IN
ONE-YEAR DONATE IT
AND HELP PEOPLE LIKE



Cindy

In 2007, Cindy lost her husband. A year later, she lost her job. Cindy had been out of work for a year and a half when she stopped by the Goodwill Career Solutions center in Jackson for help. Just a few months after enrolling in the program, Goodwill offered Cindy a job as a donation attendant. Cindy said having a steady job at Goodwill for the last five years has allowed her to become independent. But there are some things you can't put a price tag on. "Working for Goodwill has raised my self-esteem," she said. "I am now a confident person. I can walk around with my head held high."

giveit2goodwill.org/oneyearrule

Your donations are changing lives



Celebrating the best **Nashville**
has to offer in **Arts & Entertainment**

NASHVILLE

ARTS & ENTERTAINMENT

ANNUAL GUIDE

Carrie Underwood

Chip Esten

Billy Joel

Kip Moore

Kacey Musgraves

WHAT'S NEXT?

**ON SALE
NOW**

BUY NOW at
NAEmag.com
and at area Newsstands



A Glover Group Entertainment Production

Encore Dining



1808 Grille

Sophisticated, yet casual, 1808 Grille's seasonal menus blend traditional Southern dishes with global flavors. Award-winning wine list, as well as full bar and bar menu. Forbes Four-Star. Complimentary valet. 1808 West End Avenue, Nashville, TN 37203
Ph: (615) 340-0012 www.1808grille.com



Bob's Steak & Chop House *The prime place for prime steak*

Located inside the Omni Nashville Hotel, Bob's Steak & Chop House is a nationally renowned steak house specializing in the finest corn-fed, Midwestern prime beef. Our menu formula is simple: incredible meat, gigantic shrimp, fabulous salads and decadent desserts. Classic steak house food prepared and presented in a manner that Bon Appétit calls "the kind of fare you'll want to go back for again and again." 250 5th Avenue South, Nashville, TN 37203 **Ph: (615) 761-3707**



Fleming's Prime Steakhouse & Wine Bar

Fleming's Nashville is an ongoing celebration of exceptional food & wine, featuring the finest prime steak and an award-winning wine list. We are located across from Centennial Park at 2525 West End Ave.

Ph: (615) 342-0131 www.flemingssteakhouse.com/locations/tn/nashville



Goozy Dessert Bar and Café

Nashville's first dessert bar, featuring molten chocolate cakes, housemade gelato, inventive desserts, artisan grilled cheeses, gourmet coffee, wine, craft beer and cocktails. Located in Green Hills across from Orvis and Noshville.

Visit **www.gotogoozy.com** for hours and directions. **Ph: (615) 297.0274**



Kitchen Notes *Authentic Southern Flavor*

Enjoy traditional Southern dishes handed down from generation to generation at Kitchen Notes, offering sustainable dishes made from treasured family recipes. This innovative farm-to-table concept incorporates using the freshest ingredients to create great food and a casual dining experience. While you're here, don't miss out on our famous Biscuit Bar, serving biscuits throughout the day! 250 5th Avenue South, Nashville, TN 37203 **Ph: (615) 761-3700**



Jimmy Buffett's Margaritaville Nashville

On the corner of Fourth & Broadway, Margaritaville has everything... authentic southern food, the best bars & the caliber of music that's expected in Nashville.

Ph: 615-208-9080 / www.MargaritavilleNashville.com / Sales@MargaritavilleNashville.com



The Melting Pot - a Fondue Restaurant

Where fun is cooked up fondue style. Join us for Cheese and Chocolate fondue or the full 4-course experience. Casually elegant – Always Fun. Open 7 Days for dinner. Sundays after the Matinee. Valet Parking. **Ph: (615) 742-4970. 166 Second Ave. N.**

Reservations Recommended. www.meltingpot.com/nashville



Prime 108

Prime 108 was named a Forbes Travel Guide Four-Star restaurant, offering contemporary American cuisine with new menus each season and an extensive wine list. Located inside the historic Union Station Hotel. 1001 Broadway, Nashville, TN 37203
Ph: (615) 620-5665 for reservations www.prime108.com



Rodizio Grill - The Brazilian Steakhouse

Enjoy the authentic flavors, style and warm alegria of a Brazilian Churrascaria (Steakhouse). Rodizio Grill features unlimited appetizers, gourmet salads, side dishes and a continuous rotation of over a dozen different meats carved tableside by our Gauchos. Banquet seating and private dining available. Valet Parking.

Ph: (615) 730-8358. 166 Second Ave. N. Reservations Accepted. www.rodiziogrill.com/nashville



Stock-Yard Restaurant

One of the top 10 Prime Steakhouses in the U.S.! Private dining is available from 10-130. Complimentary shuttle service from every hotel in the city! Make your reservations today! 901 Second Ave. N. Nashville, TN 37201

Ph: 615.255.6464 www.stock-yardrestaurant.com



P R E S E N T S

IT'S A WONDERFUL LIFE

BASED ON THE 1946 HOLIDAY FILM BY FRANK CAPRA
LIVE ON STAGE

DECEMBER
4-21, 2014

THE CASH LEGACY

A MUSICAL TRIBUTE TO THE MAN IN BLACK

FEB. 19 - MAR. 1, 2015

BOTH SHOWS
LIVE ON STAGE
at
JAMISON HALL
THE FACTORY AT FRANKLIN

TICKETS
888.664.6362 OR
STUDIOTENN.COM

THE WEBB SCHOOL

BELL BUCKLE

Passionate
LEARNERS

Creative
EXPRESSION



The Webb School is a college preparatory day/boarding school for grades 6-12.
Special in-state tuition rate and scholarships available.
www.thewebbschool.com 888-733-9322



HOPE CLINIC

for women

a Safe Place for Tough Choices

Established in 1983, we equip women, men and families to make healthy choices with unplanned pregnancies, prevention, pregnancy loss and postpartum depression. We are a faith-based safe and confidential place for anyone seeking medical care, professional counseling, education, mentorship and practical support regardless of age, race or religion.

615.321.0005 | 1810 Hayes Street, Nashville, TN 37203 | www.hopeclinicforwomen.org



McQuiddy

A NATIONWIDE **ARGOSY** SOLUTIONS COMPANY

McQuiddy was founded in 1903, which equates to over a century of printing knowledge and experience. We're in the market of finding solutions and are up for any challenge. We are a full service provider for our clients, up for any printing or marketing challenge. As a part of Nationwide Argosy, we work with our six sister companies to deliver solutions for every size client. Our strategic positioning in Nashville, Tennessee allows us to utilize distribution hubs, an array of equipment, specialty services and our proprietary web based e-fulfillment solution: Argosy. We can handle any project brought to us. Give us a call today.



WWW.MCQUIDDY.COM

office 615.366.6565
toll free 800.882.4444

Visit NowPlayingNashville.com to find comprehensive event listings for
MUSIC, THEATRE, ARTS, SPORTS, FESTIVALS, FREE EVENTS,
KIDS & FAMILY ACTIVITIES, and more. DISCOUNT TICKET OFFERS
and EXCLUSIVE GIVEAWAYS are also a click away!

Now Playing Nashville.com®

WHERE TO GO ... WHAT TO DO

Join the family!    



Nashville & Middle Tennessee's Ultimate Guide
to Arts & Entertainment Events is an initiative of
The Community Foundation of Middle Tennessee



AT YOUR FINGERTIPS...
SCAN QR CODE
BOOKMARK US & SAVE
TO YOUR HOME SCREEN!

CLC

Christian Leadership Concepts

25 Years Strong

CLC provides a foundation to
equip men to be strong
Christian leaders in their
respective homes, churches,
communities and the
marketplace.



For Additional Information
visit our website at:
www.christianleadershipconcepts.org

The Art Event AT LIPSCOMB ACADEMY

FEATURED ARTIST:
T.J. Cunningham



February 6-8, 2015
WWW.LIPSCOMBARTEVENT.COM

 **New
Traditions
Painting**

Contemporary Style for
Nashville's Finest Homes

**Nashville's Expert
Home Painters**



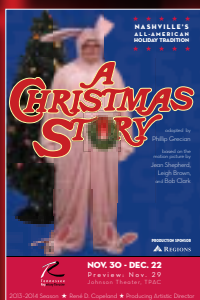
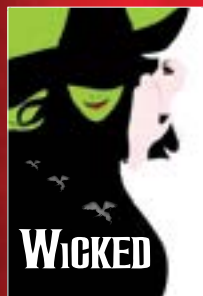
Save 25%
on your next project!

newtraditionspainting.com
(615) 651-8084

© 2014 New Traditions Painting

Advertise in the "Performing Arts Magazines"...

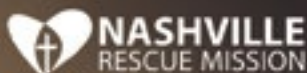
We have a captive advertising audience at every live performance.



For advertising information
please call: 373-5557

www.GloverGroupEntertainment.com
www.NashvilleArtsandEntertainment.com

HOPE
LIVES
HERE



For more information visit
nashvillerescuemission.org

Music With Friends

NASHVILLE

Music With Friends is an **exclusive music club** in **Charlotte, Charleston, Nashville and Houston** that offers its members **three unforgettable performances** per year from world renowned artists, such as **Heart, Chicago, Earth, Wind and Fire, Sheryl Crow, Diana Ross, Tony Bennett, Crosby, Stills & Nash, and Bonnie Raitt**, as well as a pre-show cocktail party and after party.



We hope you will join Music With Friends Nashville for our 2015 season at the CMA Theater in the Country Music Hall of Fame® and Museum!



Watch for future artist announcements by visiting our website at www.musicwithfriends.com.

MUSIC
with friends

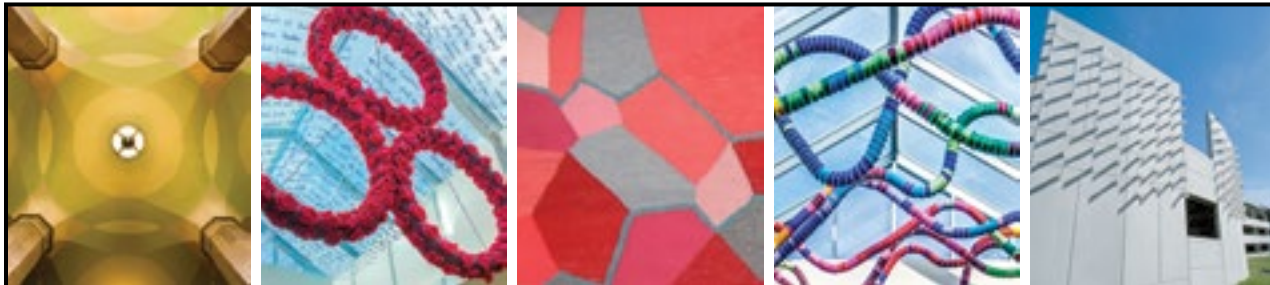


WANT TO BECOME A MEMBER? PLEASE CONTACT:

BEC PORTER

Director of Membership/Nashville

bporter@musicwithfriends.com | 615.584.4255



NASHVILLE'S **UNEXPECTED** GALLERY

Public Art
Revolving Art Exhibits
Permanent Art Collection
Community Art Exhibits
Live Music in the Terminal

Nashville International Airport is a gateway to Music City. The terminal and surrounding facilities at Nashville International Airport were designed to incorporate rotating art exhibits and public art acquisitions. The award-winning Arts at the Airport's goal is to provide a great first impression and positive impact for the arts. The next time you visit the airport, **look up, look around and discover Nashville's unexpected gallery.**



f Like us! www.facebook.com/ArtsattheAirport

Arts at the Airport receives funding for the visual arts from the Metropolitan Nashville Airport Authority and the Tennessee Arts Commission (TAC). The Flying Solo Exhibition Series is funded under an agreement with TAC and the State of Tennessee. For more information about Arts at the Airport, call (615) 275-1614, send email to arts@nashville.com, or visit www.flynashville.com.

• WE MAKE •

BIG DATA

work for

★ ★ ★ ★ ★ ★ ★ SMALL BUDGETS. ★ ★ ★ ★ ★ ★ ★

We reach the masses and the niches. We know and nurture the almighty fan.

YOU GET ROI WORTHY OF A
STANDING OVATION.



SCHEDULE YOUR FREE MARKETING CONSULTATION TODAY.



vestadvertising.com



502.267.5335

V E S T

**ILLUMINATING THE PAST
INSPIRING THE FUTURE**

Hermitage.....
THE HOME OF PRESIDENT ANDREW JACKSON

**ANDREW
JACKSON'S
HERMITAGE**

IN A NATIONAL POLL,
VOTED ONE OF THREE
BEST PRESIDENTIAL
ATTRactions
IN THE U.S. -
FIND OUT WHY!

f b p

4580 Rachel's Lane
Nashville, Tennessee
615-889-2941
www.thehermitage.com

Old Natchez
1882

Old Natchez Country Club is a beautiful venue for many social occasions such as:

- * Wedding Receptions
- * Rehearsal Dinners
- * Bridesmaid Luncheons
- * Holiday Parties
- * Fundraising Gala's
- * Corporate and Charitable Golf Outings

Our central location in Williamson County along with the beauty of the setting and first class service make Old Natchez Country Club the ideal venue for your special event.

115 Gardengate Drive, Franklin, TN 37069
615-373-3200 • www.oldnatchezcc.com

**GRADUATE
IN 4 AND
GET MORE**

MTSU.edu/apply

**MIDDLE
TENNESSEE
STATE UNIVERSITY**

Hope Scholarship Increase

Guaranteed Scholarships for Transfers

Finish Line Scholarship

**At Middle Tennessee State University,
graduate IN 4 and YOU'LL GET MORE.**

- We'll **add \$500** to your Hope Lottery Scholarship after each of your first two years.
- We'll **guarantee** scholarships to transfer students with a 3.0 GPA or better.
- And our Finish Line Scholarship will **give you back** any tuition increases.

I AM trueBLUE.

**It's the MTSU Student
Success Advantage.**

**We'll help you graduate
in four years.**

**We're investing in
your success.**

Learn more at MTSU.edu/apply

**Explore our more than 140 majors
at mtsu.edu/programs**



CHARITY : MUSIC

MUSIC HEALS.

RYAN'S GUITARS PROJECT
PROVIDES QUALITY GUITARS AND
GUITAR INSTRUCTORS TO POOR AND
REFUGEE CHILDREN THROUGHOUT
THE MIDDLE EAST. BECAUSE ALL
CHILDREN SHOULD GROW UP WITH
POSITIVE WAYS OF EXPRESSING
THEMSELVES REGARDLESS
OF CIRCUMSTANCE.



RYAN'S GUITARS PROJECT IS A CHARITABLE EXPRESSION OF ST. PAUL'S FOUNDATION.
WE'VE BEEN WORKING IN THE MIDDLE EAST HELPING ALL OF ALL FAITHS
FOR OVER 1,600 YEARS.



TO FIND OUT MORE AND DONATE, GO TO:
WWW.GUITARSPROJECT.ORG
JUST \$20 GIVES A CHILD USE OF A GUITAR
AND MUSIC LESSONS FOR A MONTH.





From the performing arts to sports, **Nashville Arts & Entertainment Magazine** celebrates the thriving, creative spirit of one of the most exciting cities in the nation.

A work of art unto itself, the magazine is your ultimate source for exclusive interviews, news, and information, including a calendar of events. The perfect-bound annual glossy is a beauty, exclusively distributed in the 800 rooms at the Omni Convention Center Hotel, in addition to other select locations. Of course, you'll want one for your coffee table, too.

The brand new edition includes a fun piece that takes you backstage at TPAC, the Nashville Symphony, the Grand Ole Opry, and Ryman Auditorium. New this year, *Nashville Arts & Entertainment* will honor five remarkable Nashvillians whose lives have impacted our city in countless ways. *Nashville Arts & Entertainment Honors* is pleased to make a donation of \$1,000 to each of five different charities these honorees support in recognition of their tremendous spirit of giving and encouragement. Read all about it!

Get your copy at Barnes & Noble, Costco, Hudson News Gift Shops at the airport, Kroger, Publix, and finer newsstands throughout middle Tennessee or purchase online at NAEmag.com. The magazine is also distributed by the Nashville Chamber of Commerce, the Nashville Convention and Visitors Bureau, and the Tennessee Department of Tourist Development.



Nashville Arts & Entertainment Magazine is published by Glover Group Entertainment. For information about advertising in the magazine – or the **Performing Arts Magazine** you received at today's performance – visit GloverGroupEntertainment.com or call 615-373-5557.

TPAC FACILITY INFORMATION

Accessibility Services at TPAC include parking, elevators, wheelchair seating, use of a TPAC wheelchair, designated restrooms, and services for hearing and visually impaired patrons. Infrared assisted listening devices are available at no charge at the entrance to each theater. TPAC offers signing for hearing impaired patrons, and audio description and Braille programs for blind and visually impaired patrons on the Sunday matinee in the HCA/TriStar Health Broadway at TPAC Series. Large print programs are available for Broadway and TPAC Presents shows. Special accessibility requests and concerns, excluding assisted listening headsets, should be discussed in advance with the TPAC House Manager at 615-782-4087. Reservations for a wheelchair should be made on the day of performance.

Restrooms for Jackson Hall are located one level down from the 6th Avenue entrance, in the halls behind the seats in the tier and balcony, and downstairs in the back of the orchestra level. Restrooms for Polk Theater are located down the stairs to the left of the entrance to the orchestra level and on the balcony level.

All electronic devices including cell phones, pagers, watch alarms, cameras, and recorders should be turned off prior to the performance or checked-in with the floor manager or an usher, who will note the seating location of physicians and others who expect emergency calls.

Call Lost and Found at 615-782-4098 to report an item you might have left at TPAC.

In case of an emergency, the number to leave with others is 615-782-4000 (along with performance, theater, and seat location).

Smoking is permitted outside the building.

Concerns or compliments?
e-mail patronservices@tpac.org



**Innovation
that excites**

THE NISSAN ROGUE.[®] NEVER A DULL ERRAND.

With intuitive All-Wheel Drive,* exceptional fuel economy and all-out fun handling, you can get excited about even the most ordinary trips. Yes, even to the dry cleaner.

Best-in-Class 33 Hwy MPG | AWD Confidence |
Innovative Cargo Versatility†**



NissanUSA.com/Rogue

*Available feature. **AutoPacific segmentation. MY15 Rogue v. 2015 & 2014 XSUV Mainstream Midsize Class. Automatic transmission compared. 2015 EPA estimate for 2015 Rogue, 33 MPG highway. Actual mileage may vary — use for comparison only. †Cargo and load capacity limited by weight and distribution. Always secure all cargo. Heavy loading of the vehicle with cargo, especially on the roof, will affect the handling and stability of the vehicle. Always wear your seat belt, and please don't drink and drive. ©2014 Nissan North America, Inc.

TACORI



Genesis Diamonds
The Official Jeweler of the Tennessee Titans

