



2009-2010

TENNESSEE PERFORMING ARTS CENTER

Magic Happens Here!

ON STAGE

TPAC PRESENTS

BENNY ANDERSSON & BJÖRN ULVAEUS'

MAMMA MIA!

THE SMASH HIT MUSICAL BASED ON THE SONGS OF ABBA®

©LITTLESTAR

• NOW PLAYING • HCA/TRISTAR BROADWAY AT TPAC • NOW PLAYING • TPAC FAMILY FIELD TRIP • NOW PLAYING •

WWW.TPAC.ORG 615-782-4040



POWERING YOUR *next stage in life*

At First Tennessee, we love the arts as much as you do. That's why we support them. And why we make it easier for you to be there for every great performance by providing convenient hours and online banking. Not to mention multiple ATMs and locations that make it easy to find us on the way to the show. For all the other financial ways we help power your dreams, stop by or visit ftb.com.



B

est brands – that's the magic of Macy's



COACH
NEW AT MACY'S!
A unique blend of soft
florals combined with
mandarin, guava and
lush violet petals. Eau de
Toilette Spray, 1.7 oz. \$65.

To order, call 1-800-45-MACYS. Advertised item may not be at your local Macy's. For store locations and hours, log on to macys.com

the magic of
★ macys
macys.com

PASSION for EXCELLENCE



From our vantage point, the key to greatness is having a ***PASSION for EXCELLENCE***. Whether it's making great tires or beautiful symphonic music...at Bridgestone Americas we believe it's all about the art of performance. We're building world-class tires in Tennessee and investing in our communities. Working in close harmony with our hometowns is a performance that makes us all proud.

**Bridgestone
Americas**

www.bridgestoneamericas.com

Comfortable. Dignified.



REPRESENTATIONAL PHOTO.

When we learned how sick Mom was, we didn't know what to do. We're so thankful that her doctor told us about Alive Hospice. They came into our home like family, helping Mom stay with us where she wanted to be.



1718 Patterson Street | Nashville, TN 37203

615-327-1085 or 800-327-1085 | www.alivehospice.org

WE PROVIDE LOVING CARE TO PEOPLE WITH LIFE-THREATENING ILLNESSES, SUPPORT TO THEIR FAMILIES, AND SERVICE TO THE COMMUNITY IN A SPIRIT OF ENRICHING LIVES.



PUBLISHERS' NOTES

A simple thank you for the past 15 years is an understatement. In one of the most challenging times in our economic history, the Performing Arts Magazines continue to grow and thrive. Is it the loyalty of the arts patron, or better still the creative program offerings by the arts? We believe our success to be a wonderful combination of the two.

First consider the diversity of the upcoming shows, which includes; ***Mamma Mia!, Nrityagram Dance Ensemble, The Color Purple, Brahms & 'Big Sur', Big River Adventures of Huck Finn, Rigoletto, A Midsummer Night's Dream, Christopher Cross*** and ***Disney's Beauty and the Beast***, just to name a few. Add to the mix the enviable demographic of the arts patron and donor, and you have the most fertile print advertising buy in Nashville.

In a good economy our publications are a great place to advertise. However when the economy slows, we are a pressing necessity. As you read tonight's publication, you will notice that a record number of advertisers have agreed. These companies not only understand the importance the arts play within the diversity of our community, but they also value you as a customer in the new economy we are all adjusting to. So whenever possible, please show your appreciation by patronizing our advertisers.

We thank you again as we celebrate our 15th year as publishers of the Performing Arts Magazines, and as always we value your input.

Enjoy the show!

Gary & Robin

Gary & Robin

gary@glovergroupinc.com
robin@glovergroupinc.com

www.glovergroupinc.com



*The arts nourish our
hearts and imaginations.
For that reason and many more,
we're proud to support the
arts in Nashville.*



Publix.

WHERE SHOPPING IS A PLEASURE.®

BMW 2010
The all-new 5 Series
Gran Turismo

bmwofnashville.com
1-800-334-4BMW



**The Ultimate
Driving Machine®**



IT'S A LOT LIKE NOTHING ELSE.

Life is filled with firsts. Each is unique and unmistakably transformative — just like the groundbreaking BMW 5 Series Gran Turismo. The very first of its kind, it blends the diverse functionality and roomy cabin of a luxury SUV with the sleek lines and powerful performance expected from a BMW sports coupe. It is unlike anything you've ever experienced, making every time you get behind the wheel feel like your very first time on the road.

THE ALL-NEW 5 SERIES GRAN TURISMO. THE FIRST OF ITS KIND.

BMW EfficientDynamics
Less emissions. More driving pleasure.



Intelligent dual-access tailgate delivers flexible solutions for loading.



Comfortable first-class seating offers more room for thought.

BMW of Nashville 4040 Armory Oaks Dr. Nashville TN. 37204 615-850-4040 **BMWofNashville.com**

We Light Up Your Life!



Let us design your dream kitchen for you!

Since **1954**, we have designed and installed hundreds of beautiful and high performance kitchens and bathrooms. The Kitchen Design Gallery offers professional design services, custom cabinetry and countertops. Contact one of our Certified Kitchen Designers (CKD) to tour our showroom and see how our design expertise can give you a kitchen that not only functions smoothly but also makes the kitchen a master showplace for entertaining. For a tour of our portfolio, visit hermitagelighting.com and select, Kitchen Design.



Cabinetry



Appliances



Chandeliers



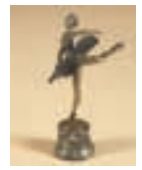
Lighting



Jacuzzi®



Furniture



Accessories

Hermitage
Kitchen
Design Gallery



Hermitage
Lighting
Gallery

531 Lafayette Street • 615-843-3300 • Mon. - Fri. 8 - 5 • Sat. 9 - 5

www.hermitagelighting.com

Welcome

KATHLEEN W. O'BRIEN

TPAC PRESIDENT AND
CHIEF EXECUTIVE OFFICER



Welcome to the Tennessee Performing Arts Center.

I hope that you enjoy this performance – that this popular tour makes you laugh, inspires you, opens your mind to new ideas, brings back a pleasant memory, and more.

Like me, you know all about the power of the live performance and you can see how the arts give meaningful, relevant experiences to children. Bringing history, literature and other subjects to life, the arts advance academic achievement, develop leadership, and encourage critical thinking, among so many other positive benefits. Imagine all the different possibilities! Multiply that by these numbers which illustrate the expansive reach of TPAC Education in classrooms from pre-school to high school across the state.

Since 1980, TPAC Education has served more than 1.5 million children and educators, including these numbers from the 2008-2009 school year:

\$900,000 in programming was delivered to
40,433 teachers, students and artists;

34,659 children were served;

28,842 students and teachers attended
53 performances at TPAC in
477 groups from **220** schools statewide;

\$45,084.50 in free and half-price tickets were provided for
7,499 students to further subsidize the standard
\$7 admission whenever needed;

4,681 students participated in
253 classroom residencies at their schools, with another
1,007 children served in
55 Metro Nashville Head Start Centers;

12 productions were presented by the Annual Season
for Young People – **4** works of theatre and another
8 in such mediums as dance, opera, poetry,
and comedy, performed by artists from
5 different nations, incorporating or reflecting
14 different cultural traditions.

Imagine that! ❀

Kathleen W. O'Brien



The numbers speak volumes. This picture also says a thousand words, illustrating the depth added to the breadth of TPAC Education programs. When students from the Tennessee School for the Blind attend a performance, they arrive early for a touch tour of the stage and costumes (*Romeo and Juliet*, pictured left). During the performance, they use headsets to listen to live narration of the action on the stage from a specially trained describer. For more information on all TPAC Education programs, visit www.tpac.org/education. ❀

TPAC Education also offers free programs for adults and families, taking participants behind the scenes and even to lunch for a lively series co-presented with Vanderbilt University. On the Wednesday evenings prior to Broadway shows, the Arts Appetizer fills to standing room only for light refreshments and dialogue with touring artists and experts. Last season, 2,959 adults and 114 artists took part in TPAC InsideOut events, which engaged 17 different community partners. For more information, visit www.tpac.org/insideout or call 615-687-4291. ❀



NISSAN


Nissan USA's support of TPAC Education programs as a Sustaining Partner is just one way the corporation invests in our community.

"Enriching People's Lives." That is the global vision of Nissan and all of its operating companies across the world. Nissan strives to support this vision by not only offering our customers unparalleled products and services, but by improving the quality of life in the communities in which Nissan operates.

Nissan Neighbors is an affiliate-wide, community-focused initiative dedicated to touching lives and improving communities through charitable contributions and in-kind donations to organizations that reflect the diverse interests of our employees and also support Nissan's focus areas: Education, the Environment and Humanitarian Aid. Through its philanthropic efforts, Nissan seeks to reinforce its commitment to corporate citizenship by making a positive and visible contribution to American neighborhoods. Nissan works closely with select



groups to determine the best way to advance their efforts and carefully tailor our assistance to meet each organization's needs.

In North America, Nissan's operations include automotive styling, engineering, consumer and corporate financing, sales and marketing, distribution and manufacturing. Nissan is dedicated to improving the environment under the Nissan Green Program 2010, whose key priorities are reducing CO2 emissions, cutting other emissions and increasing recycling. More information on Nissan in North America and the complete line of Nissan and Infiniti vehicles can be found online at www.NissanUSA.com and www.nissandriven.com / www.infinitiusa.com. 

Bank of America

Bank of America's commitment to the community includes a role as a Presenting Show Sponsor at TPAC.

At Bank of America, we believe that healthy communities are places where all of us want to live, work, raise families and pursue our dreams. The bank's approach to charitable investments deploys philanthropic resources to help neighborhoods grow and prosper. Our signature philanthropy program, the Neighborhood Excellence Initiative, recognizes, nurtures and rewards nonprofit organizations, local heroes and student leaders working to improve our community.


Since 2004, more than \$2.55 million has been awarded to outstanding organizations that are changing


neighborhoods in Middle Tennessee.

The Neighborhood Excellence Initiative is in addition to the annual charitable investments that are made through Bank of America Charitable Foundation's local grants.



Rachel Hester, John Stein, and Jaynee Day

As 2009 Neighborhood Builders, Room In the Inn's Campus for Human Development and Second Harvest Food Bank of Middle Tennessee each received a \$200,000 grant and leadership development training. Bank of America is proud to partner with these exceptional organizations to help them fulfill their missions by providing food and shelter to our neighbors. 

The Art*O*Mat (on Center Landing between Polk and Jackson) is a fun, new addition to TPAC. Check it out! A work of art unto itself, this clever creation was once a cigarette machine, artfully repurposed – with health and environmentally-conscious messages in mind – to dispense original works of art for \$5 each. You'll love it. Read more at www.artomat.org. 



Saint Thomas Heart wants Nashville to Go Red

While these amazing women each have their own individual story about how heart disease has touched their lives – they do have one thing in common. By joining Amy Marsalis and Go Red for Women, these women of heart have banded together to help bring heart disease to the forefront of women's health. Although heart disease kills more than 1,000 Middle Tennessee women each year, most women don't realize they're at risk. By making more women aware of the threat, Saint Thomas Heart and Go Red for Women are working together to help women live longer, healthier lives.

Visit NashvilleGoesRed.org to learn how to take greater control of your heart health and find heart healthy solutions for you and your family.



American Heart
Association
Learn and Live

DONNA, SUSAN, AMY MARSALIS, OFFICIAL SPOKESPERSON
FOR NASHVILLEGOESRED.ORG, AND NYKIA



**Saint Thomas
Heart**

We're here for life.

Baptist Hospital | Middle Tennessee Medical Center | Saint Thomas Hospital

615-284-LIFE | HeartAsOne.com

MAKE YOUR DREAMS COME TRUE. DON'T JUST BUILD A HOME.

BUILD A CASTLE.

For more than 15 years, Castle Contractors has set the stage for quality craftsmanship and timeless design. Our commitment to building and remodeling only the finest custom homes is second only to our dedication to create a home that reflects your own unique lifestyle. Trust the established reputation of a distinctive builder who makes certain the star of the show is the home of your dreams.

Every Home Should Be A Castle.



2009 Toast of Music City Winner – Custom Builder



Castle
CONTRACTORS
CUSTOM HOMES

**CALL ABOUT OUR
GUARANTEED PRICE**

www.CastleContractors.com
(615) 309-8200

THE STANDARD OF EXCELLENCE



STEINWAY
PIANO GALLERY
OF NASHVILLE

615.373.5901

WWW.STEINWAYNASHVILLE.COM



WE HAVE THE POWER!

We're bringing green energy to the Valley, and you have the power to help. For as little as \$4 a month, you can join TVA and your local power company to create clean, green sources of renewable energy right here in the Valley by harnessing the power of the earth, sun and wind. To learn how you can sign up for **Green Power Switch**®, call your local power company or visit www.greenpowerswitch.com.



A TVA renewable energy initiative.

Make the Switch!



Green Power Switch®

Nashville's Encore Dining



Giovanni

Famous Northern Italian cuisine features the freshest ingredients. Join owner Giovanni & Chef Marco for brunch, lunch, dinner or a drink at the bar.

909 20th Ave. South. Reservations: 615-760-5932 or giovanninashville.com



The Melting Pot

Where fun is cooked up fondue style. A four course experience in a casual elegant atmosphere. 166 Second Avenue North. 615-742-4970. Reservations at meltingpot.com. Open 7 days, dinner.



Merchants

In the heart of downtown Nashville, within easy walking distance to all entertainment venues. The perfect spot to enjoy our contemporary American fare.

401 Broadway, Reservations 615-254-1892 • Valet Parking. www.merchantsrestaurant.com



MidTown Cafe

A local favorite for 20 plus years, Midtown Cafe offers affordable, casual fine dining with free shuttle service (with dinner reservations) to TPAC, Symphony, Ryman Concerts, & Downtown Hotels. 615-320-7176.



Monell's

Pass the Peas...Please! Great Southern food served family style in a historic settings.

615-248-4747 Nashville, 615-790-6998 Franklin & 615-230-8335 Gallatin.

Serving Lunch, Dinner & Weekend Country Breakfast. www.MonellsTN.com



Nero's Grill

Green Hills only 2nd generation independently owned restaurant. We serve something for everyone! Fresh salads, great sandwiches and aged wood-grilled steaks. Come let us treat you like family! 2122 Hillsboro Dr, 615-297-7777. www.nerosgrill.com



P.F. Chang's

Fresh, contemporary & outstanding are the trademarks of P.F. Chang's China Bistro. Unforgettable Chinese cuisine & attentive service creates a unique dining experience.

2525 West End, 615-329-8901, 439 Cool Springs Blvd 615-503-9640. www.pfchangs.com



Prime 108

A vibrant addition to Nashville's downtown restaurants, offers the finest steaks, fresh seafood & Extensive wine list in a beautiful setting inside the newly renovated Union Station Hotel. 1001 Broadway, 615-726-1001.



Sole Mio

Enjoy authentic Northern Italian cuisine served in a casually elegant atmosphere.

Reservations 615-256-4013. Free Parking.

311 3rd Ave. S. One block South of the Schermerhorn. www.SoleMioNash.com



Swank's

Receive 15% off Dinner & Complimentary Valet Parking. Happy Hour 4:30-6:30 \$2 off Appetizers, \$2 Draft Beer, \$2 off Martini's • LIVE Entertainment • Outdoor Covered Patio • located inside Doubletree Hotel. 315 4th Avenue North, 615-244-8200.



Tully's Bistro

An elegant chef based dining & catering facility, situated in an historic French Victorian home. A visit to Tully's is sure to be a memorable dining experience.

333 Broadway, Hartsville, TN, 615-374-4243. www.tullysbistro.com



Valentino's

A little bit of Italy in the heart of Nashville. Featuring award winning Chef Paolo Tramontano. Lunch, Dinner, Lounge & Private Dining available.

Reservations 615-327-0148, 1907 West End, www.valentinoshnashville.com

Bravo!

Cadillac's CTS debuts to critical acclaim. According to Consumer Reports, CTS's 304 horsepower, 3.6 liter, six-cylinder engine, "delivers lively performance." With automatic transmission, deluxe interior, and available all-wheel drive, the CTS's "excellent driving dynamics," and "well-furnished interior," receives an over all score of "excellent," from Consumer Reports. Appearing now at Andrews Cadillac in Brentwood, home to the area's most extensive Cadillac section and professional cast and crew for the last 30 years. **Andrews Delivers.**



2010 CTS SPORT WAGON



MARYLAND FARMS IN BRENTWOOD

www.AndrewsCadillac.com

373-3800



A STELLAR ACT!

With virtuoso performance and front row prestige, the 2010 LR4 is one of Land Rover's most exciting acts. The superior power, sleek new designs, precision handling and enhanced beauty are receiving standing ovations from audiences around the globe. Discover what may be the most extraordinary all-terrain vehicle on tour today. Come drive our featured act at Land Rover Nashville.



NASHVILLE

BRENTWOOD, TENNESSEE www.LandRoverNashville.com **986-6000**

Why can't I slide into first base?
How long does the concession stand stay open?
Is coach signaling for a bunt or swatting a fly?
Why am I so tired after chemo?

Kids should worry about
kid stuff, not cancer.



That's why it's important to support the Vanderbilt Childhood Cancer Program in its search for a cure. Whether you contribute your time, talents, or charitable donation, every gift makes a difference. To learn how you can help, visit VanderbiltChildrens.org/SupportCancer or call 800-824-6055. Please mention "childhood cancer" when you call with questions or donations.



Getting children well on their way.

JUDY CRAYMER, RICHARD EAST AND BJÖRN ULVAEUS
FOR LITTLESTAR IN ASSOCIATION WITH UNIVERSAL

PRESENT

MAMMA MIA!

MUSIC AND LYRICS BY

BENNY ANDERSSON
BJÖRN ULVAEUS

AND SOME SONGS WITH STIG ANDERSON

BOOK BY CATHERINE JOHNSON

PRODUCTION DESIGNED BY
MARK THOMPSON

LIGHTING DESIGNED BY
HOWARD HARRISON

SOUND DESIGNED BY
ANDREW BRUCE &
BOBBY AITKEN

MUSICAL SUPERVISOR, ADDITIONAL MATERIAL
& ARRANGEMENTS
MARTIN KOCH

CHOREOGRAPHY
ANTHONY VAN LAAST

DIRECTED BY
PHYLLIDA LLOYD



CAST

In order of appearance

| | |
|--------------------------|-----------------------|
| Sophie Sheridan | LIANA HUNT |
| Ali | MELANIE BREZILL |
| Lisa | AYME OLIVO |
| Tanya..... | RACHEL TYLER |
| Rosie | KITTRA WYNN COOMER |
| Donna Sheridan | MICHELLE DAWSON |
| Sky | DAVID RAIMO |
| Pepper..... | ADAM MICHAEL KAOKEPT |
| Eddie..... | MICHAEL ROBERTS McKEE |
| Harry Bright | VINCENT CORAZZA |
| Bill Austin | MATTHEW ASHFORD |
| Sam Carmichael | JOHN SANDERS |
| Father Alexandrios | JOHN-MICHAEL ZUERLEIN |

THE ENSEMBLE

STEPHANIE BARNUM, KATY BLAKE, LYNDSEY COLE, JANE COOKE,
DONELL JAMES FOREMAN, ALBERT GUERZON,
CAROLE DENISE JONES, LEAH JOSEPH, JENNIFER NOTH, DAVID REISER, MATTHEW TYLER,
JASON WATSON, BRADLEY WHITFIELD, JOHN-MICHAEL ZUERLEIN

UNDERSTUDIES

For Sophie Sheridan – Stephanie Barnum, Lyndsey Cole;
for Ali – Stephanie Barnum, Leah Joseph; *for Lisa* – Lyndsey Cole, Carole Denise Jones;
for Tanya – Katy Blake, Jennifer Noth; *for Rosie* – Katy Blake, Jane Cooke;
for Donna Sheridan – Jane Cooke, Jennifer Noth, Rachel Tyler;
for Sky – David Reiser, Bradley Whitfield;
for Pepper – Donell James Foreman, Kevin Thomas Garcia, Bradley Whitfield;
for Eddie – Kevin Thomas Garcia, Bradley Whitfield;
for Harry Bright – Matthew Tyler, Jason Watson, John-Michael Zuerlein;
for Bill Austin – Jason Watson, John-Michael Zuerlein;
for Sam Carmichael – Matthew Tyler, John-Michael Zuerlein;
for Father Alexandrios – Matthew Tyler, Jason Watson

SWINGS

SARA BRASLOW, KEVIN THOMAS GARCIA,
TONY GONZALEZ, ELENA GUTIERREZ

Dance Captain – Sara Braslow
Assistant Dance Captain – Tony Gonzalez

THE BAND

Music Director/Keyboard 1 – BILL CONGDON
Associate Music Director/Keyboard 3 – FAITH SEETOO
Keyboard 2 – WENDELL VAUGHN
Keyboard 4 – LAUREN MCGEE
Guitar 1 – TIM MOREY
Guitar 2 – DARREN POIRIER
Electric Bass – PAUL PASMORE
Drums – JEFF MACPHERSON
Percussion – MARK MULE

Music Coordinator – SAM LUTFIYYA/TALITHA FEHR

Actors and stage managers are members of Actors' Equity Association.
Musicians are represented by Local 802, AFM.

We hope you've enjoyed *Mamma Mia!*

Make plans now to see the other great Broadway tours coming soon to the Tennessee Performing Arts Center:

Previews & Reviews

The Color Purple The Musical about Love

March 23-28, 2010

Tickets are selling fast for Nashville engagement of the musical that adds new meaning to the legacy of Alice Walker's story.

"*The Color Purple* has become one of those rare musical theatre landmarks with universal appeal. Audiences are surprised by the humor and love the music – a blend of gospel, soul, and rhythm and blues, a real American feel," said Kathleen O'Brien, TPAC's president and chief executive officer. "Already a legendary title, the story gives life to 40 years of African-American history and culture, with a big cast and big production numbers. Ultimately, the music expresses the emotional range of an amazing woman's journey and honors the message of the novel."

The 1983 novel earned the Pulitzer Prize, was adapted for film by Steven Spielberg, and debuted on Broadway in 2005, presented by Oprah Winfrey. Drawing a new generation into the theatre, the musical pulls the audience into the gripping epic about Celie, who overcomes adversity with extraordinary courage and endless capacity to forgive, love and laugh. (See synopsis on page 37.)

A CHORUS LINE

May 4-9, 2010

One of the most honored and longest-running shows in history, *A Chorus Line* takes you behind the scenes with 17 dancers in auditions for the opportunity of a lifetime...and, as one critic says, "blows the sequins off of most Broadway musicals." The lively story about the American musical and the American dream, is elegantly staged from the big opening number to the glittering finale. The show won nine Tony Awards (including Best Musical) and the Pulitzer Prize for Drama.

Disney's **BEAUTY AND THE BEAST** THE SMASH HIT BROADWAY MUSICAL © Disney

June 15-20, 2010

In June, experience the great music and stunning costumes, scenic design, and special effects in *Disney's Beauty and the Beast*, adapted from the film. Go with Belle to an enchanted castle where time is running out for a prince who will remain a beast forever unless he learns to love.



For more information, pick up a *Center Stage* magazine in the lobby and visit www.tpac.org/broadway for links to the official web sites, video clips, and more.

www.tpac.org/broadway
615-782-6560

SCENES & MUSICAL NUMBERS

in alphabetical order

CHIQUITITA

DANCING QUEEN

DOES YOUR MOTHER KNOW

GIMME! GIMME! GIMME!

HONEY, HONEY

I DO, I DO, I DO, I DO, I DO

I HAVE A DREAM

KNOWING ME, KNOWING YOU

LAY ALL YOUR LOVE ON ME

MAMMA MIA

MONEY, MONEY, MONEY

ONE OF US

OUR LAST SUMMER

SLIPPING THROUGH MY FINGERS

S.O.S.

SUPER TROUPER

TAKE A CHANCE ON ME

THANK YOU FOR THE MUSIC

THE NAME OF THE GAME

THE WINNER TAKES IT ALL

UNDER ATTACK

VOULEZ-VOUS

On a Greek Island, a wedding is about to take place...

PROLOGUE

Three months before the wedding

ACT ONE

The day before the wedding

ACT TWO

The day of the wedding



The use of any recording device, either audio or video, and the taking of photographs, either with or without flash, is strictly prohibited.



Are you at risk for a heart attack?
One-third of women who had one didn't think so either.

Heart problems have long been considered a men's disease. Perhaps that's why so many women don't consider themselves at risk for a heart attack. In reality, heart attacks claim more women's lives than men's. Of those women, one-third had no prior classic signs of heart trouble, evidence that heart disease is truly a "silent killer." However, heart disease is preventable if diagnosed and treated early. That's why we've created a Women's Heart Program offering screenings, treatments, and advice geared specifically to help women. Don't become a statistic. Find out if you're at risk.

To schedule a heart exam at the clinic nearest you,
visit VanderbiltHeart.com or call us at (615) 322-2318.



Vanderbilt Heart

The only Tennessee hospital ranked among *U.S. News & World Report's*
America's Best Hospitals 2009 for Heart & Heart Surgery.

CAST



MICHELLE
DAWSON



LIANA
HUNT



KITTRA
WYNN COOMER



RACHEL
TYLER



MATTHEW
ASHFORD



VINCENT
CORAZZA



JOHN
SANDERS



DAVID
RAIMO



MELANIE
BREZILL



ADAM MICHAEL
KAOKEPT



MICHAEL
ROBERTS MCKEE



AYME
OLIVO



STEPHANIE
BARNUM



KATY
BLAKE



SARA
BRASLOW



LYNDSEY
COLE



JANE
COOKE



DONELL JAMES
FOREMAN



KEVIN
THOMAS GARCIA



TONY
GONZALEZ



ALBERT
GUERZON



ELENA
GUTIERREZ



CAROLE DENISE
JONES



LEAH
JOSEPH



JENNIFER
NOTH



DAVID
REISER



MATTHEW
TYLER



JASON
WATSON



BRADLEY
WHITFIELD



JOHN-MICHAEL
ZUERLEIN

WHO'S WHO

MICHELLE DAWSON (*Donna Sheridan*). Broadway: *Ragtime* (Evelyn Nesbit); *Show Boat*; and *Cyrano, the musical*. National tours: *Mamma Mia!* (Tanya), *Seven Brides For Seven Brothers* (Milly), *The Secret Garden*, *The Music Of Andrew Lloyd Webber*, *Annie* (Grace). Chicago: *Ragtime* (originated Evelyn Nesbit). Regional: Laura, *Swing* (TUTS); Rizzo, *Grease*; Petra, *A Little Night Music*; Lucy, *Jekyll & Hyde* (Pittsburgh CLO); Eva, *Evita* (Pioneer); Nancy, *Oliver!* Mary Magdalene, *Jesus Christ Superstar*. TV: "Law & Order: CI," "All My Children."

LIANA HUNT (*Sophie Sheridan*). National tour debut. Recent roles: Eponine (*Les Misérables*), Hope (*Urinetown*), Belle (*Beauty and the Beast*). Recent graduate of NYU's CAP21. Liana is so excited to be joining this company. Thanks to Jed and Pete at Talent House, Eric Woodall and Tara Rubin Casting. Love to mom, dad, my two C-Dogs, family, friends.

KITTRA WYNN COOMER (*Rosie*). Ms. Coomer is thrilled to be joining the *Mamma Mia!* cast. You may have seen her somewhere across this great land as Rizzo (*Grease*), Patsy Cline (*Always, Patsy Cline*) or Rhetta (*Pump Boys and Dinettes*), just to name a few! She dedicates her performance, always, to her mom and dad.

RACHEL TYLER (*Tanya*) feels very lucky to be here. Theatre: *Smokey Joe's Café* (West End); Ellen, *Miss Saigon* (West End); Rizzo, *Grease* (U.K.); Serena, *Fame* (tour); Janet, *The Rocky Horror Show* (U.K. and European tour); and Edwin Drood in ...*Drood* (Sacred Fools). TV: Analie in "I Dream" a BBC series with Christopher Lloyd. www.rachelvtyler.com.

MATTHEW ASHFORD (*Bill Austin*). Graduate-UNC School of the Arts, member of SGI-USA's International Committee for Artists for Peace, best known as Jack on *Days of Our Lives*. Matt is happy to be returning to the stage. We can make a difference through the spread of art, culture, and education! Love to Christina, Grace, Emma.

VINCENT CORAZZA (*Harry Bright*). After years of performing in front of the camera and a very successful career in voice-overs Vince is thrilled to be returning to the stage and joining his wife Jane Cooke in the National Tour of *Mamma Mia!* www.vincentcorazza.com

JOHN SANDERS (*Sam Carmichael*) Chicago: *Oh Coward, A Minister's Wife*, *The Uneasy Chair* (Writers' Theatre), *Turn of the Centruy* (Goodman), *Miss Saigon* (Drury Lane Oakbrook), *Cymbeline*, *Troilus & Cressida* (Chicago Shakespeare). Film: *Alleged; No God No Master*. Ensemble Emeritus Stage Left, Associate Artist Chicago Dramatists. Recipient of two Jeff Nominations and an AfterDark Award.

DAVID RAIMO (*Sky*). Graduate of Oklahoma City University. National Tours: *Chicago* (Fred Casely/Billy Flynn u/s), *CATS* (Munkustrap), and *Joseph... Dreamcoat* (Simeon/Guard). Other favorite credits: *Guys and Dolls* at Hollywood Bowl, *Damn Yankees*, and *The Fantasticks*. David is thrilled to be joining the cast and would like to thank his family & friends for their endless support.

MELANIE BREZILL (*Ali*) is honored to join the cast of *Mamma Mia!* A recent graduate of Northwestern University, her professional credits include *Yeast Nation* (American Theater Company); *Caroline, or Change* (Court Theater); and *Willie Wonka* (Chicago Shakespeare Theater).

ADAM MICHAEL KAOKEPT (*Pepper*). Directly from the Las Vegas company of *Mamma Mia!* Off-Broadway: premiere of *Zanna, Don't!*; *Radiant Baby* (Public Theater). Regional: *Pacific Overtures*, *Sweeney Todd* and title role in *Peter Pan*. Ithaca College graduate.

MICHAEL ROBERTS MCKEE (*Eddie*) is thrilled to be joining the cast of *Mamma Mia!* for his first national tour. Film: *Our Very Own* (Glen), *My Bloody Valentine 3D*. Theatre: *Frozen* (Ralph), *Scapin* (Sylvestre). Michael is a recent graduate of CMU with a B.F.A. in Theatre. I'm singin' and dancin' for my Ya-Yas (Mom, Sharon and Pat).

AYME OLIVO (*Lisa*) is ecstatic to be joining the *Mamma Mia!* family. Regional: *West Side Story*, *A Chorus Line*, *Anna in the*

Tropics. A B.F.A in Musical Theatre from CSUF. Thanks to my family. This one's for you Mom!

STEPHANIE BARNUM (*Ensemble*) is thrilled to join the cast of *Mamma Mia!* National tour: *Evita* (Mistress). Regional: *Les Misérables* (Cosette). Other credits: *Urinetown* (Hope Cladwell), *Parade* (Iola Stover). Graduate of NYU Vocal Performance. "Love to Mom, Dad and Jackie."

KATY BLAKE (*Ensemble*). Nar'l tours: *Evita* (Eva), *The Phantom of the Opera* (Christine), *Whistle Down the Wind* (World premiere). Off-Broadway/ regional: Pasadena Playhouse, Hollywood Bowl, Ensemble Studio Theatre. Country music singer/ songwriter. www.katyblake.com. Love to my Bear.

SARA BRASLOW (*Dance Captain, Swing*). National tour: *Big River*. Regional: *Me and My Girl* (Goodspeed), *Beauty and the Beast* (NCT), *Funky Fairytale* (Trump Plaza). Love and thanks to my family and husband, Don Daniels, for showing me how high to dream.

LYNDSEY COLE (*Ensemble*). Theatre: Francine and Others in the original Chicago *Jersey Boys* company, Narrator understudy in *Joseph...* at The Marriott Theatre. Film/TV: 2007 Emmy Awards Tribute to "The Sopranos." Love to family and Mike!

JANE COOKE (*Ensemble*). Select credits: *Mamma Mia!* (Vegas), *West Side Story*, *Dracula* (Stratford Festival), *Beauty and the Beast* (national tour); (TV) "Monk," "The Guardian," "Falcone," "Sins of the Father," "Pentagon Papers," "The Other Me."

DONELL JAMES FOREMAN (*Ensemble*). National tour: *Hairspray* (Seaweed J. Stubbs). Regional: 1776 (NYSTI), *Hairspray* (WPTC), NYC: *Sign o' the Times* (The Duplex). Pursuing a B.F.A. Musical Theatre at Pace University. Thanks to family, professors and BNO! Read Donell's blog at thedjf.com

KEVIN THOMAS GARCIA (*Swing*). Proud AEA member! Thrilled to be back on the Greek Island! Tours: *Mamma Mia!*, *Grease*, *Footloose*. Euro tour: *West Side Story*. Thanks Mom, Dad, JCD & GA, family, friends, teachers, my Poppy! "Follow your bliss!" —Campbell

TONY GONZALEZ (*Swing*). *Mamma Mia!* (Broadway, Vegas, nar'l tour) *Joseph...* (nar'l tour, Arkansas Rep) *We Will Rock You* (Vegas) *Saturday Night Fever* (nar'l tour, Vegas), 63rd Tony Award performance. Thank you Familia Gonzalez and Becca.

ALBERT GUERZON (*Ensemble*). Favorite credits: Broadway co. of *Mamma Mia!* (Eddie), the world premier of *The Times They Are A Changin'* by Twyla Tharp and *The Wiz* with David Alan Grier. *Flower Drum Song*, *Miss Saigon*. Love you Ester!

ELENA GUTIERREZ (*Swing*). Theatre: *Mamma Mia!* (Las Vegas). Regional: *A Chorus Line* (Diana), *Crazy for You* (Polly), *Evita* (Mistress), *Street Scene* (Mae). Film: *Across the Universe*. Equity Member. Boston Conservatory graduate! Love to Milnes. "For AJ!" www.elenagutierrez.com.

CAROLE DENISE JONES (*Ensemble*) is very happy to joining *Mamma Mia!* She was born in Va, and got her B.A. in musical theater at James Madison University. National tours: *Whistle Down the Wind* (Candy). Regional: *Aida* (Aida), *Dreamgirls* (Michelle Morris).

LEAH JOSEPH (*Ensemble*) is ecstatic to be joining *Mamma Mia!* Favorite Credits include *The Wild Party* (Mae), *Arcadia* (Thomasina) and *Junie B. Jones* (Junie). B.F.A. Boston Conservatory. Love and thanks to family, friends and teachers. For grandma, always.

JENNIFER NOTH (*Ensemble*) is thrilled to be touring with *Mamma Mia!* Many thanks to Tara Rubin Casting and the creative team for this opportunity! Love to Kenny, her family, and friends for their love and support!

DAVID REISER (*Ensemble*). Happy to be in *Mamma Mia!*, have a Masters in Music, have worked on and off-Broadway and for family and friends. Dig on David's original creations at DavidReiser.com.

MATTHEW TYLER (*Ensemble*). Credits: *Rocky Horror Show* (Brad/Frank N Furter), *Phantom of the Opera* (West End),

Hedwig... (Hedwig), *Jesus Christ Superstar* (Jesus), ...*Drood* (Jasper). Thanks to Mom and Dad for all they've given for me!
www.themattthewtyler.com.

JASON WATSON (*Ensemble*). Tour: *Jekyll & Hyde*; Regional: *Jekyll & Hyde* (J&H), *Nine* (Guido), *Chess* (Anatoly), *JCS* (Judas), *Evita* (Che). Avid photographer, proud AEA member, and humble husband. "Follow your dream!"
www.jasonwatson.net.

BRADLEY WHITFIELD (*Ensemble*). Credits: *Joseph...* (Joseph), *Forever Plaid* (Frankie), *Into the Woods* (Jack), *Jesus Christ Superstar* (Judas) & *Chess* (Anatoly). Debut solo album to be released next year. Graduate of the University of Michigan. Proud member of Actors' Equity.
www.BradleyWhitfield.com.

JOHN-MICHAEL ZUERLEIN (*Ensemble*). Regional: *Forbidden Broadway*, *A Tuna Christmas* with Jim J. Bullock, *Smokey Joe's*, *Forever Plaid*, *Tick, Tick... BOOM!*, *Falsettos*, *Winesburgh, Ohio*, *A Dog's Life*, *Honk!*. For Mom, who always said I'd make a good priest. www.johnmichaelzuerlein.com.

KIMBERLY FISK (*Production Stage Manager*). National tours include *Dirty Rotten Scoundrels*, *Hairspray*, *The Full Monty*, *Ragtime*, *Titanic*, *Victor/Victoria* and *How To Succeed In Business Without Really Trying*. Broadway credits include *How To Succeed...*, *Chicago*, *Titanic* and Disney's *Aida*. Proud member of Actors' Equity Association.

MICHAEL FULE (*Stage Manager*). Broadway: *Mamma Mia!*, *La Cage aux Folles* (2005), *The Lion King*, ...*Forum*, *Kiss of the Spider Woman*, *Shogun the Musical*, *Three Penny Opera*, *42nd Street*. Tours: *Les Misérables*, *Mamma Mia!* Love to Yvonne.

STEVE HENRY (*Assistant Stage Manager*). Broadway: *The Coast of Utopia* (LCT). Off-Broadway: *From Up Here* (Manhattan Theatre Club), *Vengeance* (stageFARM), *It Goes Without Saying* (Rattlestick), *Tryst* (Promenade Theatre), *Jennifer Muller/The Works* (Joyce Theater). Regional: Kansas City Starlight and The Berkshire Theatre Festival.

JUDY CRAYMER (*Producer*) graduated from the Guildhall School of Music in 1977 and has since worked extensively in the theatre, film, television and music industries. She worked as a stage manager for the Haymarket Theatre in Leicester, the Old Vic Theatre, London and on the original production of *Cats* for Cameron Mackintosh and the Really Useful Theatre Company. In 1984, Judy became the managing director of Three Knights Ltd, formed by Benny Andersson, Tim Rice and Björn Ulvaeus and was the Executive Producer for the West End production of *Chess* at the Prince Edward Theatre. In 1987, Judy decided to pursue a career in film and television where she produced and developed television drama and comedy. The idea of *Mamma Mia!* was originated by Judy who in 1996 formed Littlestar Services Limited with Benny Andersson, Björn Ulvaeus and Richard East, to produce the stage musical. She is the Producer of *Mamma Mia!* and has produced 19 productions around the world. In 2002, Judy was presented with a Woman of the Year Award in recognition for her international success with *Mamma Mia!* The same year the show was nominated for a Tony Award for Best Musical. In the Queen's birthday honours list of 2007, she was honoured with an MBE for her contribution to the music industry. Judy produced *Mamma Mia! The Movie* starring Meryl Streep and Pierce Brosnan, that became the highest grossing musical film worldwide. In 2008 Judy was honoured with the Women in Film ITV Achievement of the Year Award. *Mamma Mia! the Movie* was also nominated for a Golden Globe for Best Motion Picture—Musical or Comedy, a BAFTA for Outstanding British film and Judy was personally nominated by BAFTA for the Carl Foreman Award for Special Achievement.

RICHARD EAST (*Producer*). Born in Australia. A Fine Art graduate from the Victorian College of the Arts, Melbourne, Australia in 1977, Richard has worked in the entertainment industry for 24 years in Australia, London and the U.S. in various capacities including promoter, producer and artist manager. He is a peer of the Australia Council. Richard has been involved in *Mamma Mia!* from its inception.

BJÖRN ULVAEUS (*Music & Lyrics*) was born in 1945 in Gothenberg on the West Coast of Sweden. After a successful local career in Sweden with a folk group in the mid-'60s, he started his collaboration with Benny Andersson. They then went on to form ABBA with Agnetha Faltskog and Anni-Frid Lyngstad. Even during the ABBA years, the idea of writing a musical seemed appealing and, in 1981, Björn and Benny met Tim Rice and co-wrote *Chess* with him, which opened in the West End in 1986. In 1995, Björn and Benny opened a new musical in Sweden called *Kristina from Duvmåla*, which played for three years in Sweden. In February 2002, the Swedish version of *Chess* opened in Stockholm.

BENNY ANDERSSON (*Music & Lyrics*). Born in Stockholm on December 16, 1946. Instructed by his father and grandfather, he started to play the accordion at the age of 6, and he has not stopped yet.

CATHERINE JOHNSON (*Book*). Theatre: *Rag Doll* and *Renegades* (Bristol Old Vic); *Too Much Too Young* (Bristol Old Vic and London Bubble); *Boys Mean Business*, *Dead Sheep*, *Little Baby Nothing* (Bush Theatre, London); *Shang-a-Lang* (Bush Theatre and national tour); *Mamma Mia!* (worldwide). Her plays have been produced in Germany, Denmark and Sweden. *Through The Wire* a musical for NT/Shell Connections. Television: Episodes of "Casualty," "Byker Grove," "Love Hurts," "Gold," "Linda Green;" the screenplays of *Rag Doll* and *Where's Willy?* (HTV) and "Sin Bin" (BBC); the series "Love In the 21st Century" (Channel 4); Awards: Catherine has won the Bristol Old Vic/HTV Playwrighting award; Thames Television's Writer-In-Residence award; Thames Television's Best Play award; nominated in 2002 for a Tony Award for Best Musical Book for *Mamma Mia!*

PHYLLIDA LLOYD (*Director*) has directed opera, theatre and recently her first film for television. Theatre: *Six Degrees of Separation*, *Hysteria*, *Wild East* (Royal Court); *The Threepenny Opera*, *Boston Marriage* (Donmar Warehouse); *Mary Stuart* (Donmar Warehouse and Apollo); *The Way of the World*, *Pericles*, *What the Butler Saw*, *The Prime of Miss Jean Brodie*, *The Duchess of Malfi* (Royal National Theatre); *Artists and Admirers*, *The Virtuoso* (Royal Shakespeare Company); *Mamma Mia!* (London, Broadway and worldwide). Opera: *La Bohème*, *Medea*, *Carmen*, *L'Etoile*, *Gloriana*, *Albert Herring* (Opera North); *Macbeth* (Paris and Royal Opera House, London); *The Handmaid's Tale* (Copenhagen, English National Opera and Toronto); *The Carmelites*, *The Verdi Requiem* and *Wagner's Ring Cycle* (English National Opera). For *Gloriana a Film*, she received an International Emmy, an E.I.P.A. d'Or and the Royal Philharmonic Society Award. For *Mary Stuart*, Phyllida was nominated for the Olivier Award for Best Director and won the South Bank Theatre award 2006.

ANTHONY VAN LAAST (*Choreographer*). Despite coming second in the under-13 diving competition at school, Anthony has gone on to choreograph and direct many shows all over the world and in 1999 was awarded the MBE by Her Majesty the Queen for his services to dance and choreography.

MARK THOMPSON (*Production Designer*) has designed many productions for the Royal National Theatre and Royal Shakespeare Company. On Broadway, he designed *Bombay Dreams*, *Shadowlands*, *Joseph and the Amazing Technicolor Dreamcoat*, *Arcadia*, *Art*, *The Blue Room*, *Blast!*, *Follies* and *The Queen of Spades* for the Metropolitan Opera. In London, Mark has worked many times in the West End and at the Almeida, Donmar and Royal Court. He designed the costumes for the film *The Madness of King George* and is the recipient of four Olivier Awards.

HOWARD HARRISON (*Lighting Designer*) Howard's current and recent work includes: *Mary Poppins*, *Guys and Dolls*, *Heroes* and *Donkeys' Years* in the West End, *Mamma Mia!* in London, Broadway, Las Vegas, Hamburg, Japan, Stockholm, Australia and U.S. tour, *Mammals* at the BUSH and on tour, *Rebecca* on tour, *Skellig* at the Young Vic and *Edward Scissorhands* at Sadlers Wells and on tour. Howard has been nominated six times as Best Lighting Designer in the Laurence Olivier Awards and was the recipient of the 2001 Australian Green Room Award for his work on *Mamma Mia!*

ANDREW BRUCE (*Sound Designer*) began his career at the Royal Opera House, London, in 1971. A year later he co-founded Autograph, the British sound design and rental company. His sound design credits include *Song and Dance*, *Little Me*, *Abacadabra*, *Chess*, *Follies*, *Into the Woods*, *Children of Eden*, *City of Angels*, *Martin Guerre*, *The Fix*, *Hair*, *The Witches of Eastwick*, *The Secret Garden*, *Sweeney Todd*, the U.K. tours of *Cats* and *Oliver!* and all worldwide productions of *Miss Saigon*, *Les Misérables*, *Chitty Chitty Bang Bang* and *Mamma Mia!* His latest design work can be heard on the new London production of *Mary Poppins*.

BOBBY AITKEN (*Sound Designer*) has been involved with theatre sound for over 20 years, designing sound for productions in the U.K. and around the world. London work includes *Cyberjam*, *We Will Rock You*, *Blast!*, *Grease*, *Return to the Forbidden Planet*, *Five Guys Named Moe*, *Which Witch*, *Metropolis*, Pete Townsend's *The Iron Man*, *In the Midnight Hour*, *High Society*, *Time*, *A Saint She Ain't*, *The Best of Times*, *Soultrain*, *From a Jack to a King*, *Sweeney Todd*, *Bitter Sweet*, *Children of Eden*, *The Fix* and *Mamma Mia!*. U.K. regional work includes productions at Coventry Belgrade, Derby Playhouse, Sheffield Crucible, Manchester Royal Exchange, Watford Palace and Leicester Haymarket. RSC: *The Beggar's Opera* and *Bartholomew Fair*. Opera: for the past four years Bobby has been working to create techniques to deliver credible sound reinforcement for large scale, in-the-round opera production. Work has included *Carmen*, *Madame Butterfly*, *Tosca*, *Aida* and *La Bohème* at the Royal Albert Hall.

MARTIN KOCH (*Musical Supervisor, Additional Arrangements and Materials*). Musical supervisor: *Les Misérables* eight productions worldwide; *Miss Saigon* four productions worldwide; *Cats* London; *Oliver!* London; *Martin Guerre* U.K. tour; *Mamma Mia!* 14 productions worldwide. Orchestrations: *Just So*, *Moby Dick*, *Tutankhamun*, *Which Witch*, *Mamma Mia!* (Tony nomination 2002), *Jerry Springer The Opera*. Many arrangements for international artists and orchestras. Koch & Gilpin: Martin started this music production company with long time friend and collaborator Nick Gilpin. They have been responsible for the production and composition of numerous TV programs and produced many albums, including *Mamma Mia!* (Grammy nomination 2002) and *Jerry Springer The Opera*. They are currently working on the stage production of *Billy Elliot* and film score for the forthcoming *A Way Through the Woods*.

BILL CONGDON (*Music Director*) has been with *Mamma Mia!* since 2004. Many regional, stock and symphony orchestra credits, including CPCC Summer Theatre, Charlotte Rep, Greensboro Symphony, Charlotte Symphony, North Carolina Symphony, Opera Carolina and the NC Ballet Theatre. He holds a B.M.E. from East Carolina University (N.C.), and both a Masters of Music and Performer's Certificate from Eastman School of Music (N.Y.). Love to Dana.

NICHOLA TREHERNE (*Associate Choreographer*). Associate director/choreographer *Joseph and the Amazing Technicolor Dreamcoat*, worldwide. Artistic Supervisor *Starlight Express* (London). Director *Ricky Nelson Story* (Sydmonton), *Fame* (Oslo). Assistant director: *By Jeeves* (London). Choreographer: *Yusapov* (Sydmonton), *Star for a Night* (Carlton TV), *The Barber of Seville* (Holland Park) and *One Touch of Venus* (Kings Head, London). Associate Choreographer *Hair* (London), *Carmen Jones* (Germany), *Shall We Dance* (Oslo), *Jesus Christ Superstar* (U.K. tour and video), *Whistle Down the Wind* (London), Heineken concert (Rotterdam), *Bombay Dreams* (Apollo Victoria, London), *Burn the Floor* (world tour and video).

MARTHA BANTA (*Resident Director*) is the Artistic Director of the Adirondack Theatre Festival. She served as Artistic Associate at New York Theatre Workshop. Some credits include directing new work at: Lincoln Center, NYTW, Soho Rep, Ensemble Studio Theatre, New Georges, Cincinnati Playhouse, Portland Stage, *Rent* in Japan and Germany and *Playhouse Disney Live* in Disneyworld.

DAVID HOLCENBERG (*Associate Music Supervisor*) Broadway: *Mamma Mia!*, *Seussical*, *Titanic*, *Show Boat*. David also music directed *Ragtime* (U.S. premiere, L.A. Drama Critics Award; Distinguished Achievement in Musical Direction), *Dessa*

Rose (Lincoln Center) and *The Phantom of the Opera* (Toronto). David's show *Bingo* is currently playing around the country.

JANET ROTHERMEL (*Dance Supervisor*) is currently supervising all the North American companies of *Mamma Mia*. Broadway/national tour credits include *Joseph... Dreamcoat*, *Beauty and the Beast*. Janet was the Associate Choreographer for the Miss U.S.A./Universe Pageants and the "Carol Burnett Show." Member of Actors' Equity.

TARA RUBIN CASTING (*Casting*). Upcoming: *A Little Night Music*. B'way/tours: *Billy Elliot* (adult casting), *Shrek*, *Guys and Dolls*, *The Country Girl*, *Rock 'N' Roll* (U.S. casting), *The Farnsworth Invention*, ... *Young Frankenstein*, *The Little Mermaid*, *Mary Poppins*, *My Fair Lady*, *Pirate Queen*, *Les Misérables*, *The History Boys* (U.S. casting), *Spamalot*, *Jersey Boys*, ... *Spelling Bee*, *The Producers*, *The Phantom of the Opera*, *Good Vibrations*, *Bombay Dreams*, *Oklahoma!*, *Happiness*, *Flower Drum Song*, *Imaginary Friends*, *Metamorphoses*, *Frogs*, *Contact*, *Thou Shalt Not*, *Man of No Importance*. Yale Rep.

DAVID GRINDROD (*Casting*). founded David Grindrod Associates 10 years ago with Stephen Crockett. London Casting includes: *Chicago*, *Fiddler on the Roof*, *Gone with the Wind*, *Joseph...*, *Hairspray*, *Mamma Mia!* (worldwide), *Spamalot*, *The Lord of the Rings*, *The Sound of Music*. Film: *The Phantom of the Opera* directed by Joel Schumacher, Ensemble casting for *Mamma Mia!* directed by Phyllida Lloyd. DVD's include: *Joseph...*, *Jesus Christ Superstar*. Casting consultants for English National Opera. Member of the Casting Directors Guild of Great Britain.

ALLIED LIVE (*Tour Marketing/Publicity*) is a full-service entertainment marketing and advertising agency representing numerous Broadway shows, national tours, performing arts institutions, and experiential entertainment entities throughout the U.S. and Canada. Current clients include: *Avenue Q*, *Mamma Mia!*, *Rent*, *Dirty Dancing*, *Hair*, *Legally Blonde*, *Billy Elliot*, *Stomp*, *Frost/Nixon*, *In The Heights*, *Spring Awakening*, *August: Osage County*, Cirque du Soleil, Feld Entertainment, Million Dollar Quartet (Chicago), Washington National Opera (Washington, D.C.), Reprise Theatre Company (Los Angeles), Los Angeles Philharmonic at Walt Disney Concert Hall and Hollywood Bowl, Broadway By The Bay (San Francisco), Music Center (Los Angeles) and Hollywood & Highland Center. www.alliedlive.com.

ARTHUR SICCARDI THEATRICAL SERVICES, INC. (*Production Manager*) has served as technical supervisor on more than 200 Broadway shows, including *A Chorus Line*; *Gypsy*; *Chicago*; *Hello, Dolly!*; *Cats*; *The Real Thing*; *Ballroom*; *Dreamgirls*; *Broadway Bound*; *Chess*; *Cat on a Hot Tin Roof*; *Jerome Robbins' Broadway*; *City of Angels*; *Biloxi Blues*; *Death and the Maiden*; *My One and Only*; *Victor, Victoria*; *My Fair Lady*; *Sunset Boulevard*; *Fiddler on the Roof*; *Mamma Mia!* national tours; *Annie Get Your Gun*; The Tony Awards.

NINA LANNAN ASSOCIATES (*General Management/Executive Producer*). Current Broadway productions include *Billy Elliot* and *Mamma Mia!*, the North American tours of *Dirty Dancing*, *Legally Blonde*, *The Color Purple* and *Mamma Mia!* Upcoming productions include the new musicals *9 to 5* and *Ray*. Principals in the firm include Devin Keudell, Amy Jacobs and Maggie Brohn. Devin Keudell has worked with Nina Lannan since 1992 and also manages *Billy Elliot* on Broadway, the North American tour and Broadway production of *Mamma Mia!*

ANDREW TREAGUS (*International Executive Producer*) was General Manager for the London production of *Mamma Mia!* and is the International Executive Producer for all international productions of the show. Andrew has managed a large number of musicals in the West End of London including *A Chorus Line*, *Ain't Misbehavin'*, *Annie*, *On Your Toes*, *City of Angels*, *Starlight Express*, *Aspects of Love*, *Grease!*, *The Rocky Horror Show*, *Joseph and the Amazing Technicolor Dreamcoat*, *Saturday Night Fever*, *Pirates of Penzance*, *Dancin'* and *La Cage aux Folles*. www.treagusstoneman.com

STAFF
LITTLESTAR SERVICES LIMITED

| | |
|---|--|
| Directors | Judy Craymer Richard East Benny Andersson Björn Ulvaeus |
| International Executive Producer | Andrew Treagus |
| Business & Finance Director | Ashley Grisdale |
| Administrator | Peter Austin |
| PA To Judy Craymer | Katie Wolfryd |
| Marketing & Communications Manager | Claire Teare |
| Marketing & Communications Co-ordinator | Liz McGinity |
| Head of Accounts | Jo Reedman |
| Accountant | Sheila Egbujie |
| Accounts Assistant | Eleanor Booth |
| Receptionist | Amy Smith |
| Administrative Assistant | Matthew Willis |
| Legal Services | Barry Shaw Howard Jones At Sheridans |
| Production Insurance Services | Walton & Parkinson Ltd. |
| Business Manager For Benny Andersson, Björn Ulvaeus & Scandinavian Press | Görel Hanser |
| Consultant International Associate Producer | Julian Stoneman |

| | |
|---------------------------------|------------------|
| NINA LANNAN ASSOCIATES | |
| GENERAL MANAGER | AMY JACOBS |
| COMPANY MANAGER | SHAUN MOORMAN |
| Associate Company Manager | Roseanna Sharrow |
| Management Associate | Liza Garcia |

| | |
|--|-----------------|
| General Management for MAMMA MIA! ANDREW TREAGUS ASSOCIATES LIMITED | |
| GENERAL MANAGER | PHILIP EFFEMEY |
| International Manager | Mark Whittemore |
| Pa To Andrew Treagus | Jacki Harding |
| Production Coordinator | Felicity White |
| International Travel Manager | Lindsay Jones |

| | |
|--------------------------------------|----------------------------------|
| PRODUCTION TEAM | |
| ASSOCIATE CHOREOGRAPHER | NICHOLA TREHERNE |
| RESIDENT DIRECTOR | MARTHA BANTA |
| ASSOCIATE MUSIC SUPERVISOR | DAVID HOLCENBERG |
| DANCE SUPERVISOR | JANET ROTHERMEL |
| ASSOCIATE SCENIC DESIGNER (US) | NANCY THUN |
| ASSOCIATE COSTUME DESIGNERS | LUCY GAIGER, SCOTT TRAUOGTT |
| ASSOCIATE HAIR DESIGNER | JOSH MARQUETTE |
| ASSOCIATE LIGHTING DESIGNERS | ED MCCARTHY, ANDREW VOLLER |
| ASSOCIATE SOUND DESIGNERS | BRIAN BEASLEY, DAVID PATRIDGE |
| MUSICAL TRANSCRIPTION | ANDERS NEGLIN |
| CASTING CONSULTANT | DAVID GRINDROD |

| | |
|--|--|
| CASTING | |
| TARA RUBIN CASTING (US) | |
| Tara Rubin CSA, Eric Woodall CSA | |
| Laura Schutzel CSA, Merri Sugarman CSA, | |
| Dale Brown, Paige Blansfield, Kaitlin Shaw | |

| | |
|---------------------------------|--|
| TOUR MARKETING DIRECTION | |
| ALLIED LIVE | |
| LAURA MATALON TANYA GRUBICH | |
| MARYA K. PETERS | |
| JOHN GILMOUR | |

| | |
|---|--|
| NATIONAL PRESS REPRESENTATIVE BONEAU/BRYAN-BROWN | |
| ADRIAN BRYAN-BROWN JOE PERROTTA | |

| | |
|--|--|
| MUSIC PUBLISHED BY EMI GROVE PARK MUSIC, INC. AND EMI WATERFORD MUSIC, INC. | |
|--|--|







| | |
|--------------------------------|---------------------------------|
| STAFF FOR MAMMA MIA! | |
| PRODUCTION STAGE MANAGER | KIMBERLY FISK |
| Stage Manager | Michael Pule |
| Assistant Stage Manager | Steve Henry |
| Dance Captain | Sara Braslow |
| Assistant Dance Captain | Tony Gonzalez |
| PRODUCTION MANAGER | ARTHUR SICCARDI |
| Head Carpenter | Frank Martin |
| Assistant Carpenters | Larry Humphreys, Dan Montgomery |
| Flyman | Michael Muniz |
| Advance Carpenter | David Brannigan |
| Production Electrician | Rick Baxter |

| | |
|---------------------------------------|--|
| Head Electrician | Mark Leslie |
| Deck Electrician | Chris Moeller |
| Front Light Operator | Bill Pryde |
| Vari * Lite Programmer | Andrew Voller |
| Production Sound Engineer | David Patridge |
| Advance Sound | Colin Ahearn |
| Head Sound | Jason DeJardin |
| Assistant Sound | Jeff McWay |
| Electronic Drums Programmer | Garth Helm |
| Production Properties | Simon E.R. Evans |
| Head Properties | Byron Reynolds |
| Assistant Properties | Randy Robertson |
| Wardrobe Supervisor | Sandy Hanlon-Cressler |
| Assistant Wardrobe | Wayne Spellman |
| Wardrobe Stitcher | Elmo Struck |
| Hair Supervisor | Denise Reynolds |
| Assistant to the Choreographer | Leah-Sue Morland |
| Assistant Lighting Designer | Jeffrey Lowney |
| Assistant Costume Designers | Angela Kahler Robert Martin, Brian Russman |
| Casting Director | Tara Rubin, Eric Woodall |
| Casting Associate | Laura Schutzel, Merri Sugarman |
| Casting Assistants | Rebecca Carfagna, Jeff Siebert, Paige Blansfield |
| Associate to Casting Consultant | Stephen Crockett |
| London Casting Assistant | James Orange |
| Production Assistants | Catherine Bloch, Beth Camuso |
| Legal Counsel (US) | Lazarus & Harris LLP Scott R. Lazarus, Esq., Robert C. Harris, Esq. |
| Immigration Counsel | Bryan Cave LLP/Mark Koestler, Esq., Jennifer Estrella |
| Accounting | Rosenberg, Neuwirth and Kuchner |
| Original Logo Design | ©Littlestar Services Limited |
| National Advertising | Serino Coyne, Inc. |
| Merchandising | Max Merchandising, LLC/Randi Grossman |
| Merchandise Representative | Jonathan Wotell |
| Insurance | Walton & Parkinson Ltd., Marsh Inc. |
| Banking | City National Bank |
| Travel Agent | Tzell Travel |
| Hauling | Clark Transfer |
| Accommodations | TourWerks, Chris Renzulli |
| Ground Transportation | Executive Car Service |
| Rental Vehicles | Enterprise Entertainment Division |

| | |
|--|--|
| Tour Direction | |
| The Booking Group/Meredith Blair (212) 869-9280 | |

| | |
|---|--|
| CREDITS AND ACKNOWLEDGEMENTS | |
| Scenery constructed and painted by Hudson Scenic Studio, Inc. and Hamilton Scenic Specialty. Computer Motion Control and Automation by Feller Precision, Inc. SHOWTRAK Computer Motion Control for Scenery and Rigging. Sound equipment supplied by Masque Sound. Lighting equipment supplied by Westsun Show Systems and Vari*Lite, Inc. Soft goods by I. Weiss and Sons. Costumes executed by Barbara Matera Ltd., Tricorne New York City, and Carelli Costumes. Millinery by Lynn Mackey. Wet suits by Aquatic Fabricators of South Florida. Custom Men's shirts by Cego. Custom knitting by C.C. Wei. Custom fabric printing and dyeing by Dye-namix and Gene Mignola. Shoes by Native Leather, Rilleau Leather and T.O. Dey. Gloves by Cornelia James. Properties by Paragon Theme and Prop Fabrication. Flash Bronzer provided by Lancome. Cough Drops provided by Ricola U.S.A. Rehearsed at the New 42nd Street Studios. Special thanks to Olive Garden Restaurant, Bob Borbunof from Taylor Guitars, David Holcenberg, Leslie Evers and Curtis Cowley. | |

| | |
|--|--|
| Mamma Mia! was originally produced in London by LITTLESTAR SERVICES LIMITED on April 6, 1999. | |
| Visit Mamma Mia! on the web at www.mamma-mia.com | |

| | |
|---|--|
|  | The actors and stage managers employed in this production are members of Actors' Equity Association, the union of professional actors and stage managers in the United States. |
|  | Backstage and Front of the House Employees are represented by the International Alliance of Theatrical Stage Employees (or I.A.T.S.E.). |
|  | The musicians employed in this production are members of the American Federation of Musicians. |
|  | The Press Agents and Company Managers employed in this production are represented by the Association of Theatrical Press Agents & Managers. |
|  | This production is produced by a member of The Broadway League in collaboration with our professional union-represented employees. |
|  | Theatrical equipment is moved on a carbon neutral basis by Clark Transfer, Inc. in association with NativeEnergy.com. |

LET YOUR PALATE BE OUR GUIDE.



When you go to an Italian restaurant, you can almost predict what will be on the menu. But not here. Because owner Giovanni and Chef Marco aren't happy unless your dining experience is one you – and you alone – can enjoy.
It's not Italian food...it's Giovanni's!

Giovanni
RISTORANTE - BAR

909 20th Ave South

615.760.5932

giovanninashville.com

So many reasons to be PaperFREE!

This is your chance to get the digital office of your dreams!

Enter to win the
My PaperFREE Office
\$50,000 makeover

brought to you by RJ Young.
Go digital and be PaperFREE!

For details and your chance
to win visit

my **PaperFREE** office .com

#4 Take back your
desk from the
stacks of paper

#16 Spend more
time doing what you
get paid to do

#24 Find documents
in seconds by keyword
search

Why will you be PaperFREE in 2010?

Tell us at

rjyoungco.wordpress.com/29-reasons



CHRIST
PRESBYTERIAN ACADEMY

Equip with Knowledge • Lead with Wisdom • Live in Truth

2323-A Old Hickory Blvd., Nashville, TN 37215 | For more information call (615)373-9550 or visit us at www.cpalions.org

Explore the Possibilities!

Play it. Love it. Live it! We invite you to be our guest and discover what the Del Webb lifestyle is all about!

There are more activities than you can imagine. More new friends than you can count. More of everything you love to do. It's just an incredible place for active adults, 55 and better. Don't wait any longer to start living the lifestyle you've always dreamed of!

DEL WEBB LAKE PROVIDENCE Nashville's Premiere Active Adult Community!

- 24,000 square foot Club at Lake Providence now open
- Outdoor amphitheater overlooking 15 acre lake
- Tennis, pickle ball, bocce and basketball
- Full-time lifestyle director
- Just 17 miles from downtown Nashville

Homes from the \$140s to \$300s

Del Webb®

— LAKE PROVIDENCE —

204 Antebellum Lane, Mt. Juliet, TN 37122
From Nashville, Take I-40 East to Exit 226A



Call 888-486-9322 or visit delwebb.com/lakeprovidence



Pulte Home Corporation (acting through its Del Webb brand), 204 Antebellum Lane, Mt. Juliet, TN 37122. At least one resident must be 55 years of age or better, some residents may be younger and no one under 19 in permanent residence. Community Association fees required. Details available on request except in restricted states. Pulte reserves the right to change prices at any time without notice, and select homesites are subject to availability. Not an offering to CT, NJ or NY residents. Warning: the CA Department of Real Estate has not inspected, examined or qualified communities outside of CA. *Offer not available on all homes. Copyright Pulte Homes, Inc. ©2009.



anatra jewel

6027 highway 100
belle meade
615-352-9696

www.anatrajewel.com



www.tpac.org
615-782-4040

The Color Purple

The Musical about Love

March
23-28

PRESENTED BY
DOUBLETREE
HOTEL
NASHVILLE • DOWNTOWN

A CHORUS LINE

May 4-9

Photo by William Kohn



BROADWAY SPECIAL ADD-ON
June 15-20

Sign up to receive news
about the **2010-2011**
season of HCA/TriStar
Broadway at TPAC!

www.tpac.org/stagelinks

2009-2010 HCA/TRISTAR BROADWAY AT TPAC
IS SPONSORED IN PART BY:



THE TENNESSEAN
TENNESSEAN.COM

Please note that some of these shows contain adult
language and content. As always, we encourage you
to contact TPAC directly for more specifics.
Artists, schedules and show titles are subject to change.

Sole Mio

REAL ITALIAN CUISINE

You Simply Must Try Our New
SPECTACULAR SYMPHONY SPECIALS

*Appetizers & Dinner Before the Symphony,
Then, Dessert & Coffee Afterwards*

For a Quick Bite, Try Our Light Fare Served Anytime at the Bar

Catering is now available - here or there!

256.4013

311 3rd Avenue South

Just one block from the fabulous new
Schermerhorn Symphony Center and two
blocks from Broadway with plenty of free parking!

DAVIDSON

ACADEMY

Preschool - 12th Grade



Preparing students
for college, life,
and eternity.

1414 Old Hickory Blvd.
Nashville, TN 37207

615-860-5300
www.davidsonacademy.com



We will Rock You!

One Banking Relationship at a time



FirstBank

Visit our Website to find a location near you.

www.FirstBankOnline.com

46 locations throughout
Tennessee to serve you.

200 Fourth Ave North
at the historic Noel Place
Downtown Nashville
(615) 313-0080



Little Bit of Italy in the Heart of Nashville

Come, visit Italy without ever leaving Nashville. Voted #1 Italian restaurant two years in a row by the Tennessean, a recipient of the AAA Four Diamond Award & The Wine Spectators Award of excellence for outstanding wine lists are among Valentino's deserved credits. Chef Paolo Tramontano offers Italian cuisine, impeccably prepared and presented in refined, comfortable surroundings with flawless service.



VALENTINO'S
RISTORANTE

1907 West End Ave. (615) 327-0148
www.valentinosnashville.com



A Season of Uncommon Delights

The Blair Concert Series

Spring 2010



For information about our free faculty concerts, guest artists, lectures, and special events, call 322-7651.

Blair School Of Music • Vanderbilt University
2400 Blakemore Avenue
Nashville
www.vanderbilt.edu/blair



Complimentary valet parking and FREE self-parking for most events





Feeling Like You Never Fit In?

If you suffer from morbid obesity, help is closer than you think. Centennial's Center for the Treatment of Obesity is the most experienced laparoscopic bariatric program in the region and offers a wide range of laparoscopic weight loss surgery procedures including gastric banding, sleeve gastrectomy, gastric bypass, duodenal switch and revisional procedures. Our physicians, dietitians and counselors at the Center for the Treatment of Obesity have over 20 years' experience. Free yourself from obesity and get the most out of life, join us for a free seminar.

The Center for the Treatment of Obesity at
 **Centennial Medical Center**

A Department of Centennial Medical Center

TRI STAR HEALTH SYSTEM.

To register for a free seminar call TriStar MedLineSM at (615) 342-1919 or visit TriStarHealth.com

REGIONS
School of
**Nashville
Ballet**

SPONSORED BY TOA

**SUMMER
INTENSIVE
TRAINING**

June 28 –
July 30, 2010

**A Tradition
of Excellence**

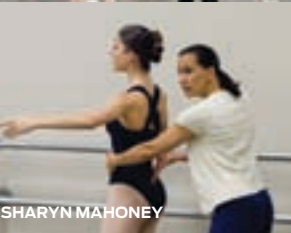
Call 615-297-2966. ext. 20
Visit www.nashvilleballet.com
E-mail kspinazzola@nashvilleballet.com



PAUL VASTERLING



DONNA DELSENI



SHARYN MAHONEY



GONZALO ESPINOZA



NICOLE KOENIG

"THE LIFE WELL-LIVED IS A WORK OF ART."



Experience a community where the finer things in life are enjoyed every day. Nestled among ten quiet acres in the heart of Green Hills, you'll find the comfort, security and convenience offered only at Nashville's premier retirement community.

Blakeford
AT GREEN HILLS

(615) 665-9505 / www.blakeford.com

*Bringing out the best performance in
every child on the stage & in the classroom*



Financial aid available • After school care for all grade levels
Activities include 8 sports, band, drama club & more

**OVERBROOK
SCHOOL**
OF THE DOMINICAN CAMPUS

Growing in Grace and Knowledge since 1936
Academic excellence in the Catholic tradition • Co-ed Pre-K through 8th

4210 Harding Rd • Nashville, TN 37205 • 615.292.5134 • www.overbrook.edu



I didn't know I needed a mammogram.

I didn't know I was old enough.

I didn't know it could happen to me.

I didn't know.

TERI

BREAST CANCER SURVIVOR

VIEW TERI'S STORY AT STHS.COM/CANCER

Cancer can affect anyone at any age. Even you or someone you love. But with regular mammograms you can detect breast cancer in the early stages and treat it quickly. So, don't put it off. Make an appointment today for a mammogram at one of the hospitals of Saint Thomas Health Services. We have the largest and most experienced network of breast cancer specialists in Middle Tennessee. That's why more women trust the Saint Thomas Health Services' Centers for Breast Health.



**Saint Thomas
Health Services**

We're here for life.

Baptist Hospital | Middle Tennessee Medical Center | Saint Thomas Hospital

284-PINK | sths.com/cancer

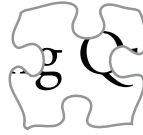
PUZZLE ON THIS:

Can you piece together the titles of some of the ABBA hits in *Mamma Mia*?

1.



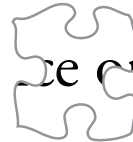
2.



3.



4.



5.



6.



7.



Answers: S.O.S.; Dancing Queen; I Have a Dream; Take a Chance on Me; Money, Money, Money; The Winner Takes It All.



Magic Happens Here!

ON SALE NOW - Buy Your Tickets Today!

Pick up a **Center Stage** magazine in the lobby for more information.

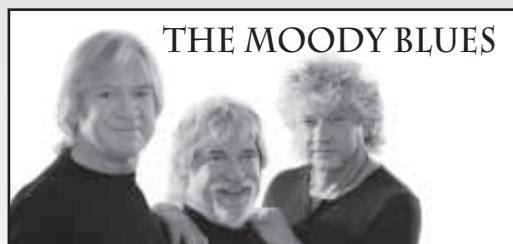
WWW.TPAC.ORG / SHOWS

615-782-4040

TPAC Box Office (Downtown or at Davis-Kidd Booksellers in The Mall at Green Hills)



THE MESSINA GROUP / AEG LIVE
MARCH 13 • 8:00 P.M.
TPAC's Polk Theater



THE MOODY BLUES
OUTBACK CONCERTS
MARCH 18 • 7:30 P.M.
TPAC's Jackson Hall



TENNESSEE REPERTORY THEATRE
MARCH 20 - APRIL 10
TPAC's Johnson Theater



HCA/TRISTAR BROADWAY AT TPAC
MARCH 23-28
TPAC's Jackson Hall



SQUARE PEG AND SHERPA CONCERTS
APRIL 3 • 7:30 P.M.
TPAC's Polk Theater



NASHVILLE OPERA
APRIL 10 & 13
TPAC's Jackson Hall



TPAC FAMILY FIELD TRIP
APRIL 18 & 25
TPAC's Johnson Theater



SQUARE PEG AND SHERPA CONCERTS
APRIL 26 • 8:00 P.M.
TPAC's Polk Theater

The Color Purple

The Musical about Love.

SYNOPSIS

In 1911, sisters Celie and Nettie play a hand-clapping game before they join the residents of their rural Georgia community, heading to church. Celie, age fourteen, is pregnant with her second child. The women of the church, who act as a commenting chorus throughout the musical, observe that Celie's own father is the father.

Celie gives birth to a boy, whom she names Adam, taken away by Pa, just as he did her first child, Olivia. Mister, a local farmer and landowner, wants to marry Nettie. Pa refuses, offering Celie instead. At Mister's house, Celie is weighed down with work. Nettie arrives at Mister's house, saying she can no longer live with Pa. Mister allows Nettie to stay, but throws her out when she protests his advances.

Years pass and no letters from Nettie arrive; Celie believes she must be dead. Mister's son Harpo brings his intended bride Sofia home to meet his father. Celie is entranced with Sofia's strength and willpower. Sofia and Harpo marry, but constantly battle. Mister advises Harpo to beat his wife if he wants her to obey him. Celie agrees. Sofia confronts Celie, saying that she's had to fight her entire life, but never thought she'd have to fight in her own house. She advises Celie to fight back against Mister, but Celie doesn't have the strength. Sofia leaves.

In 1922, Harpo turns his house into a juke joint. Squeak, who wants to be a singer, applies for work as a waitress and tells Harpo to book the blues singer Shug Avery (Mister's old girlfriend) to attract a big audience. The town is abuzz with the news that Shug Avery is coming. She arrives ill and exhausted. Celie nurses her back to health. As their friendship grows, Shug realizes that Celie can't see her own beauty and strength and encourages her to find her inner power.

Shug brings down the house with a blues number. Sofia arrives with her new boyfriend. Harpo and Sofia

dance, causing a jealous Squeak to pick a fight, which escalates into a brawl. Celie and Shug leave. Walking back to the house, they realize what a strong bond they have. Shug reveals that she found a hidden letter for Celie from Africa. Nettie is alive, working with the missionary couple who adopted Celie's children.. Shug counsels an enraged Celie not to confront Mister.

The mayor's wife tells Sofia she wants her to be her maid. Sofia refuses and is attacked by the mayor's men. Celie goes to Sofia's jail cell to care for her.

Time passes. Shug returns, bringing her new man Grady with her. Celie is unhappy and bitter. Shug encourages Celie to see the simple joys around her – like the color purple flowering in a field.

Celie, Mister, Shug, Grady, Sofia, Squeak, Harpo and Ol Mister sit down to Easter dinner. Shug announces that she and Grady are leaving for Memphis, and Celie is coming with them. Mister scoffs, but Celie stands firm and leaves with Shug, Grady, and Squeak. Harpo and Sofia reunite. Celie continues to write to Nettie. After a confrontation with Harpo, Mister has an awakening and vows to repair his mistakes.

In 1943, Celie learns that the man she knew as Pa was actually her stepfather. He has died and left her his house and store. She opens a sewing business and comes to believe in herself. Mister receives a letter from Nettie and makes a plan with Harpo and Sofia, who have rebuilt their relationship.

In 1945, people gather at Celie's house for the 4th of July celebration. Mister comes to make amends. He asks Celie to marry him again, but she says that they are better off as friends. She sees a group of strangers approaching the house and is about to enjoy a happy reunion.

March 23-28 TPAC'S JACKSON HALL

www.tpac.org/colorpurple • 615-782-4040

TPAC Box Office (Downtown or at Davis-Kidd Booksellers in The Mall at Green Hills)

Groups of 20 or more call 615-782-4060

PRESENTED BY



DOUBLETREE[®]
HOTEL
NASHVILLE • DOWNTOWN

Please note that this show contains adult language and content. As always, we encourage you to contact TPAC directly for more specifics. Artists, schedules and show titles are subject to change.



THE TENNESSEAN
TENNESSEAN.COM

♪ See that girl, watch that scene... diggin' the ♫ ***RECYCLING QUEEN!***

Here's how you can recycle today:

PLASTIC BOTTLES

Look for these bins:



PLAYBILLS

TPAC invites you to *take home one* playbill for the family and *recycle the other*.

TPAC playbills are online at www.tpac.org/onstage.

Look for these bins:



LIVE GREEN: *Playing our Part*

TPAC is about arts and culture – an environmentally responsible culture, that is active in the concerted effort of millions of Americans to “live green.”



The Tennessee Performing Arts Center is an accessible facility with a variety of services.

For more information, see page 60 of this playbill or visit www.tpac.org.

Mamma Mia! Sunday matinee performance, March 7 –

SIGN INTERPRETERS: Harriet Harms and Karla Kelso • AUDIO DESCRIBER: Jill Massie

Get more out of Life.

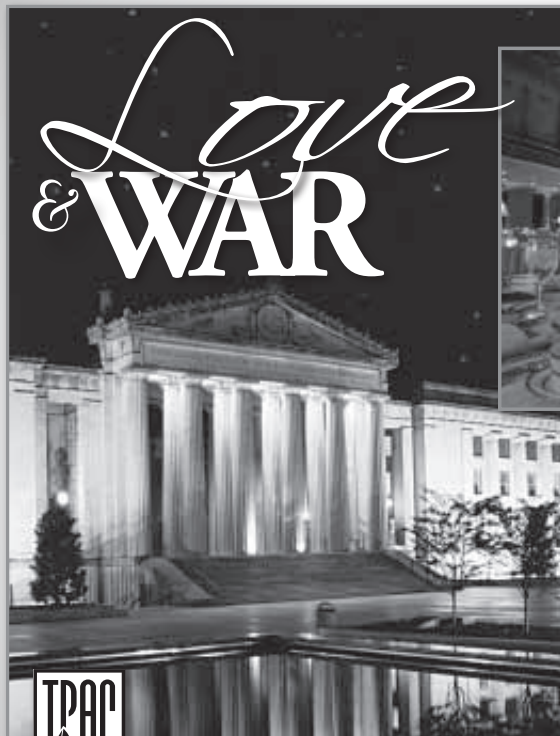


Look for the arts and entertainment news you want inside Sunday Life showcasing Nashville's best visual and performance arts, books, behind-the-scenes profiles and more. Look for it Sundays inside The Tennessean's Life section.

THE TENNESSEAN
TENNESSEAN.COM

To subscribe, visit Tennessean.com or call 1-800-342-8237 today.

The Tennessee Performing Arts Center (TPAC) has four versatile spaces for your event, including historic and elegant War Memorial Auditorium.



Love
& **WAR**



Historic. Elegant. Timeless.
your event ∞ our expertise



Visit www.tpac.org/weddings or call
TPAC Event Sales and Services at 615-782-4000.

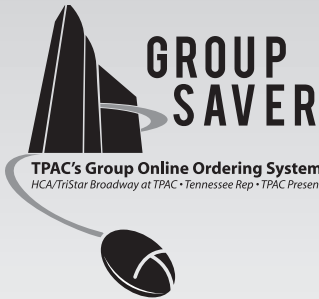
**WAR MEMORIAL
AUDITORIUM**

— 1925 —

Get a group and go!

TPAC HAS THREE FANTASTIC PROGRAMS FOR YOUR EMPLOYEES AND GROUPS

615-782-4060 • www.tpac.org/groups



TPAC's Group Online Ordering System
HCA/Tristar Broadway at TPAC • Tennessee Rep • TPAC Presents



TPAC's Corporate Online Ordering System
HCA/Tristar Broadway at TPAC • Tennessee Rep • TPAC Presents

BizTix

TPAC's Business Ticketing Program
TENNESSEE REP • HCA/TRISTAR BROADWAY AT TPAC

THANK YOU

to **MAMMA MIA!** audience members
who participated in TPAC's Group Sales
program and purchased tickets by
February 16, 2010.

A CHORUS LINE



Winner of nine Tony Awards and the Pulitzer Prize for drama, *A Chorus Line* is the musical for everyone who's ever had a dream and put it all on the line. Reserve early - it's coming to TPAC's Jackson Hall May 4-9.

**Groups of only 10 or more
get fantastic deals!**

Abenity
Affinion
AFTRA
American Airlines
American General
Andrew Daniels
Asurion
AT&T
Austin Peay State University
Averitt
Baker, Donelson, Bearman,
Caldwell & Berkowitz, PC
Bank of America
Baptist Plaza Surgicare
Bass, Berry & Sims
Belmont University
Beth Nash
Blue Cross Blue Shield
BMI
Board Member
CABLE
Capitol Arts Alliance Theatre
Caterpillar Financial
Services Corporation
Centennial Healthcare
Centennial High School
Christie Kirkpatrick
CMA
CMT
Cool Springs Galleria
Corrections Corporation
of America
Covance
Cracker Barrel

Cumberland University
Debra Vance
Delek
Deloitte
Diana Rae & Co Voice School
Dollar General
Education Networks of America, Inc
EMI Christian Music Group
Events & Adventures
Every Nation Ministries
Fioravanti Fun Day
First Class Charter
Franklin Girls
Gaylord Entertainment
Ghertner & Company
Gibson Musical Instruments
Girl Scout Troops 68 & 69
Gospel Music Association
Harper Families
HCA
Healthways
Hendersonville Medical Center
Homewood Suites
Nashville Downtown
HSN
Jewish Community Center
Johnson Controls Incorporated
Judith Sullivan
Judy Driver
Julia Johnson and Friends
Junior League of Murfreesboro
Katie and Friends
Kraft CPAs PLLC
Kristin Long

Laurie Provost and the
New Neighbors Club
Lifestyle Tours
Lifeway
Lipscomb University
LP Building Products
Macon County High School
McKendree Village
Metro Nashville Airport
Authority
Metro Nashville Chorus
of Sweet Adelines
Miller & Martin PLLC
Mitsui & Co. (USA)
Motlow State Community College
MTSU
Nashville Association of
Musicians, AFM Local 257
Nashville Convention
& Visitors Bureau
Nashville Library
Nashville Shared Services
Nashville State Community College
NEES
NIH and Friends
Nissan
Ogletree, Deakins, Nash,
Smoak & Stewart
Paris Henry County Arts Council
Pearl Drums
Peggy O'Ryan
People's Bank
Phi Mu Nashville
Pinnacle Financial

Regions Bank
RH Factor and Silver Spirit
Rutherford Moms and Kids
Sally Fowler
Shawn Perry, Client Appreciation
Sheraton Downtown
Skyline Medical Center
Southern Hills Medical Center
Southern Joint Replacement Institute
Sparkfly
STA Travel
Staffmark
Stanton Tours
State Farm Insurance
Stites & Harbison PLLC
Stone Crest Medical Center
SunTrust Bank
Take Care Health Systems
Tennessee Baptist Adult Homes
Tennessee Education
Lottery Corporation
The Bunco Group
Tim Vaden
Tom James Company
United Way, Rutherford County
University of Phoenix
UT Martin Honors Program
Vanderbilt University
Waller, Lansden, Dortch & Davis
White House First UMC Women
WWL Vehicle Services Americas, Inc.
Xebec Management, Inc. (XM)
YMCA of Middle Tennessee

TPAC's TEMPTING

Taster of Tennessee

Visit TPAC Concessions
to enjoy a growing assortment of
specialty items just for TPAC patrons
from Nashville and Tennessee's finest:

BONGO JAVA ROASTING CO.
(two custom blends for TPAC)

GRAB THE GOLD

JACK DANIEL'S TENNESSEE WHISKEY

MOOSE HEAD KETTLE CORN

NASHVILLE TOFFEE COMPANY

PROVENCE BREADS AND CAFÉ

PURITY DAIRIES

RAE'S GOURMET SANDWICHES

SAVOR THE FLAVOR

SAVORY SECRET

SWEET 16TH A BAKERY

TENNESSEE CHEESECAKE

TENNESSEE T-CAKES

YAZOO BREWING COMPANY



Visit TPAC bars to
enjoy the specialty beverage for
Mamma Mia!

"SOMETHING BLUE,"

a vibrant blend of
Van Gogh Acai Blueberry Vodka,
Blue Curacao, and Sprite.



The Tennessee Performing Arts Center
gratefully acknowledges its sponsors
and the sponsors of the 2009-2010
HCA/TriStar Broadway at TPAC season.

BROADWAY SERIES TITLE SPONSOR:



Part of the HCA Family of Hospitals

SUSTAINING PARTNER:

NISSAN

OFFICIAL SPONSORS:



OFFICIAL BOTTLED WATER
OF TPAC

PRESENTING SHOW SPONSORS:



Special Thanks to:





CHARITABLE DONATIONS: The Tennessee Performing Arts Center gratefully acknowledges the following organizations and individuals for gifts and pledges to the center from February 2009 to February 2010. These gifts support TPAC Education, performing arts programs, and special projects. For more information about donor benefits and sponsorship opportunities, or to notify us of any errors or omissions, please contact the TPAC Development Department at 615-687-4315.

TPAC BOARD OF DIRECTORS

C. Dale Allen
Kenneth E. Blackburn, II
Barbara T. Bovender
William H. Braddy, III
John E. Cody
J. Chase Cole
Ronald L. Corbin
Jeanette Crosswhite, Ph.D.
Ansel L. Davis
Emanuel J. Eads
Donna G. Eskind
Farzin Ferdowsi
John D. Ferguson
Kathleen C. Guion
Aubrey B. Harwell, Jr.
Martha R. Ingram
Beverly Keel
Patricia Matthews-Juarez, Ph.D.
Larry R. Stessel
Claire W. Tucker
J. Stephen Turner
Tera Vazquez
Alan R. Yuspeh
Sandra F. Fulton (*Director Emerita*)

GOVERNMENT, CORPORATE, AND FOUNDATION CONTRIBUTORS AS OF FEBRUARY 2010

\$50,000 +

Bank of America
The Community Foundation of Middle Tennessee
The HCA Foundation on behalf of HCA and the TriStar Family of Hospitals
Metro Nashville Arts Commission
Nissan North America, Inc.
Regions Bank
The Tennessean
Tennessee Arts Commission

\$25,000 - \$49,999

Allstate Insurance Company
American Airlines
BMI
Central Parking Corporation
Davis-Kidd Booksellers Inc.
Dollar General Corporation
Doubletree Hotel
Downtown Nashville
Fidelity Offset, Inc.
Gaylord Entertainment Foundation
Homewood Suites
Nashville Downtown
Ingram Charitable Fund*
Lynch²
Miller & Martin, PLLC
NovaCopy

\$10,000 - \$24,999

Anonymous
BMI
Earl Swensson Associates, Inc.
Lipman Brothers, Inc.
The Memorial Foundation
Mary C. Ragland Foundation
Universal Music Group Nashville
Vanderbilt University

\$5,000 - \$9,999

AT&T
Bridgestone Americas Trust Fund
Brown-Forman
Cal IV Entertainment
Caterpillar Financial Services Corporation
Christy-Houston Foundation, Inc.
Coca-Cola Bottling Company
Corrections Corporation of America
The Dell Foundation
First Tennessee Bank
Patricia C. & Thomas F. Frist Designated Fund*
Gannett Foundation
The Gibson Foundation
HCA-Caring for the Community
Ingram Arts Support Fund*
Mapco Express/Delek US
Meharry Medical College
MRCO, LLC
Nashville Gas a Piedmont Company
Nashville Predators Foundation
Piedmont Natural Gas Foundation
Pinnacle Financial Partners
The Premiere Event
Publix Super Markets Charities
Rechter Family Fund*
SunTrust Bank, Nashville
Target
Waller Lansden Dortch & Davis
XMi Commercial Real Estate

\$2,500 - \$4,999

Alvin and Sally Beaman Foundation
The Atticus Trust
Samuel M. Fleming Foundation
GroupXcel
Metropolitan Nashville Airport Authority
Premier Parking
Purity Dairies, Inc.
Purity Foundation
Irvin and Beverly Small Foundation
Southern Arts Federation
Southern Joint Replacement Institute
Total HVAC

\$1,500 - \$2,499

Aladdin Industries Foundation, Inc.
The Danner Foundation
Ezell Foundation
Enterprise Rent-A-Car Foundation
Dan J. and Fran F. Marcum Advised Fund
Neal & Harwell, PLC
The Pfeffer Foundation
PrintSmart

\$500 - \$1,499

Amerigo
BlueCross BlueShield of Tennessee
Bradford Family Foundation
Bread & Company
CapStar Bank
City Drug Company
Community Health Systems
Creative Artists Agency
Fident Consulting
Frosted Nashville

The Joel C. Gordon & Bernice W. Gordon Family Foundation
Hirtle, Callaghan & Company
Mid-Tennessee Neonatology Associates, P.C.
The Parke Company
Rhonda and Richard Small Family Philanthropic Fund
Sysco Nashville

*A fund of the Community Foundation of Middle Tennessee

INDIVIDUAL CONTRIBUTORS AS OF FEBRUARY 2010

Chairman's Circle (\$10,000 +)

Mr. and Mrs. Jack O. Bovender, Jr.
Farzin and Ziba Ferdowsi
Mr. and Mrs. John D. Ferguson
Mrs. Landis Gullett
Martha R. Ingram
Robert S. Lipman
Judy and Steve Turner

Producer's Circle (\$5,000 - \$9,999)

Anonymous
Julie and Dale Allen
Dr. and Mrs. Jeffrey B. Eskind
Martha and Mark Ezell
Dr. and Mrs. Thomas F. Frist, Jr.
Judy and Bob Gaudio
Becky and Kent Harrell
Elliot and Cynthia Himmelfarb
Keith and Deborah Pitts
Mr. and Mrs. Ben R. Rechter
Yaara and Uzi Yemin

Director's Circle (\$2,500 - \$4,999)

James W. Ayers
Kelley and Lee Beaman
Ms. Andrea Conte and Gov. Phil Bredesen
Michael Cartwright
Anita and Larry Cash
Elizabeth and Jerone Cecelic
Ashley and David Dill
Laurie and Steve Eskind
Linda and Miles Ezell
Assi Ginzburg
Mr. and Mrs. Gary Glover
Mrs. Victor S. Johnson, Jr.
Mr. and Mrs. Victor S. Johnson, III
Kathleen and Tim O'Brien
Jennifer and Eric Paisley
Dr. Norman Scarborough
Mr. and Mrs. Irvin Small
Neil and Chris Tyler
Douglas White
Elisha and Jeff Zander

Applause Society (\$1,250 - \$2,499)

Anonymous (2)
Susan Adams
Dr. and Mrs. Frank H. Boehm
Jan and Jim Carell
Anthony Carroccia

Christopher John and Tricia Casa Santa
Mr. and Mrs. William S. Cochran
Eva-Lena and John Cody
J. Chase Cole
Dr. and Mrs. Lindsey W. Cooper, Sr.
Kelly and Dan Crockett
Mayor Karl Dean and Mrs. Anne Davis
Marty and Betty Dickens
Barbara and Emanuel Eads
Joan and Ray Eanes
Wendy and Mark Eddy
Robert D. Eisenstein
Jane and Richard Eskind
Robert Finn and Gary Lingofelter
Dr. and Mrs. Stephen Fortunato
Mr. and Mrs. Tom Foster
Mr. and Mrs. Charles C. Fowler, Jr.
Dr. and Mrs. Daniel C. Geddie
David and Rechelle Glidewell
Diane and Gary Gober
Matt Gorham
Kathleen and Harvey Guion
Pat and Wayne Halper
Carlana and Aubrey Harwell
Shari and John Howerton
Judith and Jim Humphreys
Rick Isaacson
Rosemarie C. Kalil
Jacqueline Kelly
Lee and Glenda Kraft
Mr. and Mrs. George Lale
Michael D. and Kimberly M. Law
The Honorable Thomas and Terri Lewis
Dr. Spencer Madell
Mr. and Mrs. Dan J. Marcum
William D. Marks
Ronald and Renate McAbee
Lynda McGuire and Bill Nosbisch
Robert and Yin Mericle
Lisa and Timothy Moore
Kate and Carl Mulder
Joe and Shirley Osbourn
Mr. and Mrs. Philip M. Pfeffer
Mr. and Mrs. Dale W. Polley
Mr. and Mrs. Mark Rosenthal
Dr. and Mrs. Timothy P. Schoettle
Mr. and Mrs. Billy Sherrill
Lisa and Mike Shmerling
Mrs. Elizabeth B. Stadler
Carol and Jed Suzuki
Dianne and Tom True
Lyn N. Walker
Mr. and Mrs. Danell Welch
Mr. and Mrs. Ted H. Welch
Mr. and Mrs. John Warner White
Denise and Victor Zirilli

Super Stars (\$1,000 - \$1,249)

Mr. and Mrs. Thomas J. Aaron
Mr. and Mrs. Craig J. Andreen
Mr. and Mrs. Joseph Barker
Joanne Bertone
William H. Braddy, III
Mr. and Mrs. James C. Bradford, Jr.
Christa Curtis
Jana and Ansel Davis
Mr. and Mrs. John W. Eakin, Jr.

Beth A. Fortune
Mr. and Mrs. Joel C. Gordon
Mark Hensley
Mr. and Mrs. Samuel H. Howard
Sarah and Walter Knestrick
Mr. and Mrs. Howard H. Lamar, III
Dr. and Mrs. Jeffrey A. Landman
Ellen and Jon Lehman
Richard and Sheila McCarty
Robert E. McNeilly, Jr.
Representative Gary Odom
Mr. and Mrs. William C. O'Neil, Jr.
Karen and Eric Saul
Mr. and Mrs. John L. Seigenthaler
Mr. and Mrs. Stuart W. Speyer
Claire W. Tucker
Mr. and Mrs. William M. Wilson

**Stars
(\$500 - \$999)**

Linda Albertalli
Lori and Chris Allen
Fouad Atalla
Joy and Bob Belton
Steven Bengelsdorf
James B. Boles
Mary Bolte
Steve Botts
Dr. and Mrs. Barry W. Brasfield
Lonnie Burnett
Joan K. Burrell
Thomas and Melissa Carter
John Cauthon
Marjorie and Allen Collins
Sheri Cotham
Martha and Bob Davidson
Luanne and Steve Davidson
Michael Dodson

Cassidy Dowdy
Ernest and Mitzi Dunkley
Mr. and Mrs. Joe Earnest
Annette S. Eskind
Mr. Jack Fleischer
Mrs. Joelle Frasca
Mr. and Mrs. Albert F. Ganier, III
Deb and Dennis George
Don and Janie Goff
William E. Golab
Phyllis Grubbs
Lesli Hammontree
Cordia and Tom Harrington
Jim Hearn
Stephen and Emily Heffington
Richard Hensley
Deborah and Donald Holmes
Mr. and Mrs. Dennis Huffer
Mr. and Mrs. Shandy Husmann
Cameron Hyder
Jan and Rand Krikorian
Mr. and Mrs. J. Richard Lodge, Jr.
Heather and Alan Looney
Sam and Sharon Martin
Mrs. Jack C. Massey
Ralph Miles
Jeffrey Mobley
Jennifer and Jim Morrison
Teresa and Mike Nacarato
Laura and Vincent Nord
David and Pamela Palmer
Joyce and George Pust
Mr. and Mrs. Kenneth L. Roberts
Evelyn and William Rodgers
Mace and Joyce Rothenberg
James Schröder
Nita and Mike Shea
Sharon and Bill Sheriff

Rhonda and Richard Small
Robert and Jane Stammer
Joe N. and Brenda Steakley
Joyce A. Vise
Darrell Waltrip
Lori Ward
Mr. and Mrs. Robert A. Yeager
Mr. and Mrs. Julian A. Zander, Jr.

**Performer's Circle
(\$300 - \$499)**

Anonymous (3)
John and Marlene Adams
Michael and Sheila Aldrich
William F. Alexander
Doug and Connie Allen
Denise Alper
Bobby Anastario
Colleen and Beth Atwood
Phil and Wanda Barnes
Dolores A. Barnett
Mr. Gary Barton
Dana and Martin Bauguess
Linda and Blaine Baum
Betty Beasley and Melissa Ott
Shirley Beck
Mr. and Mrs. Irvin Berry
Cherry and Richard Bird
John and Penny Blane
Allison and Joe Boever
Mr. and Mrs. Paul Boklage
Jerry Boswell
Steve Botts
Patti Bracy
Eugene Bressler
Melinda and Daniel Brodbeck
Lorrie K. Brouse
Margaret Brown and Robert Szklany

Marion Brown
Patsy Brown
Mr. and Mrs. Frank M. Bumstead
Dr. and Mrs. Terry Burkhalter
Dr. and Mrs. E. James Burton
A. J. Buse
James and Annette Butler
Melvin Butler
Sarah and George Byars
Rich and Judy Callahan
Russ and Penny Campbell
Mr. and Mrs. Victor L. Campbell
Brandon and Meegan Cardwell
Michael and Pamela Carter
Jeff and Kathy Cartwright
Gordon and Ruth Caruthers
Paige, Steve, and Kathryn Cates
Linus Catignani
Lori and Dennis Causey
Phila D. Chandler
Desmond Child and Curtis Shaw
Mr. and Mrs. Roy E. Claverie, Sr.
Mike Clutts
Yvonne Collier
Joel and Rebecca Cooper
Virginia Hixon Corbitt
Mr. and Mrs. James A. Croy
Denise Cummins
Thomas Davis
Mr. and Mrs. R. Barry Dean
Jill DeBona
Wayne Detring
Joseph Dew
George deZevallos
Mark and Stephanie Dickinson
Joseph L. Dickson and
Nancy DiNunzio
Don Dobernic

Arts Partners

**MILLER
& MARTIN**
PLLC
ATTORNEYS AT LAW

**The Tennessee Performing Arts Center appreciates
an ongoing partnership with Miller & Martin.**

Local Focus. Global Vision. Miller & Martin has got our “Hands On Nashville.” As a firm, we enjoy volunteering time and resources to serve our communities, from our PENCIL partnership with Bordeaux Elementary and participating in Habitat for Humanity builds to volunteering for the Special Olympics summer games. Our attorneys and staff spend time volunteering for a wide range of organizations that serve everything from children’s issues to pro bono representation to fostering education and the arts. We know that the community makes what we do possible – we strive to give back to that community for our mutual success.

Suite 1200, One Nashville Plaza
150 Fourth Avenue North | Nashville, TN 37219
www.millermartin.com | (615) 244-9270



| | | | |
|----------------------------------|--------------------------------|---------------------------|------------------------------------|
| Catarina Dockery | Nancy Maclean | Bradley and Susan Widmann | Sandra Goad |
| Stevan Ecken | Dawn Maharaj | Dr. Joseph Wieck | Rose and Doug Grindstaff |
| Nancy Eisenbrandt | William Maksymowicz | Michael K. Williamson | Dottie Haber |
| Brian and Tracy Eppolito | Donna and Donald Mann | LaWanda Ann Wilson | Sara Habibian |
| Amy Eskind | David and Shirley McGee | Robert Wormsley | Shelia Hall |
| Robert Evans | Ann McHugh | Rebecca Worth | Mr. and Mrs. James Hastings, Jr. |
| Kristin and Matthew Faier | Kitty Boyte McKee | Sharon Yates | Barbara Hayes |
| Karin and Mark Farr | Dewayne McKinney | | Dale and Glenda Hill |
| Larry and Joellen Farris | Jennifer McMillan | | Sam and Phyllis Hirshberg |
| Karen and Gene Fleming | Jennifer Medway | | Mr. and Mrs. Henry Hooker |
| Martha Fouce | Louise Merritt | | Donna Horton |
| Ramona Fox | Mitzi and Rick Michaelson | | Helen R. Houston |
| Trista and Michael French | Susanne Miller | | Linda and Burt Hummell |
| Don and Joyce Gandy | Tom Miller | | Jean Hutchinson |
| Christine Garcia | Dr. Donald E. Milner | | Charles E. Jackson, Sr. |
| Jeanne Gavigan | Ann Mitchell | | Dr. and Mrs. J. Kenneth Jacobs |
| Carol Gibson | Mr. and Mrs. Thomas W. Moon | | Dr. and Mrs. C. H. Jameson, III |
| Margaret Gillilan | Joann Morris | | Robert and Lisa Jarman |
| Jamie Gilman | Kristi Morrow | | Susan Jasper and Sunshine Randolph |
| Randall and Debbie Graham | Jack and Marion Nadeau | | Kimberly Johansen |
| Ruth Ann Graveno | Dawn M. Nepp | | Mr. and Mrs. James A. Knestrick |
| Joy Graves | Agatha Nolen | | Sandra Koczwara |
| David B. Gray | Ken and Elizabeth Palombo | | William H. Lassiter, Jr. |
| Steve Griffin | J. Russell Parkes | | Mr. and Mrs. Irving Levy |
| Robin Grubb and Gina Lofredo | Selena Pevahouse | | Pamela Lewis |
| Joseph Longmire | Kip and Rose Pierce | | Cecilia Little |
| Mr. and Mrs. Michael Gryll | Jonathan Pinkerton | | Sandra Loewen |
| Cathy Guenther | Lee Ann and Chris Plott | | Frank Lohrasbi |
| Donna and John Hagan | Tim Priddy | | Kim and Bob Looney |
| Elizabeth Hall | Patricia and Douglas Ralls | | Ken Martinson |
| Mike and Peggy Harbers | Mary Jo Rapetti | | Cory Mason |
| Donald and Trish Harris | B. Gail Reese | | Rita McDonald |
| James and Shari Hart | Diane Honda and David Reiland | | Carolyn Miller |
| Mr. and Mrs. Kenneth D. Hawkins | Robert and Alison Ring | | Kevin Monroe |
| Dr. and Mrs. Hugh L. Head, III | Mark and Hye Robbins | | Paula Moseley |
| Tiffany Lynn Heep | Regina Roberts | | Linda Moulton |
| Nicole Helm | Anne and Joe Russell | | Wanda and Perry Ogletree |
| Mr. and Mrs. Kevin R. Hennessy | Susan W. Schuchard | | P. J. Olsen |
| Elizabeth Hernandez | Moneta and Herb Schumaker | | Carter and Larry Owens |
| Nancy Hershkowitz | Sherra M. Schwartzau | | Mr. and Mrs. Todd E. Panther |
| Pamela Heyer | David and Wendy Schwartz | | Diane Pearson |
| Robert Holderfield | Pat and Marty Schweinhart | | Mr. and Mrs. M. Lee Peterseim |
| Greg and Becca Hollis | Sharon and William Schweinhart | | Candy and Bill Phillips |
| Jeff and Ashley Hollis | Carol and Alvin Scott | | Cora Proctor |
| Joan Howard | Felicia Searcy | | Albert and Jeanie Randall |
| Dr. and Mrs. Richard A. Howerton | Kelly Sekuterski | | Donna J. Richards |
| Richard Hummer | Jeanne Sellars | | Paul and Marjorie Ridge |
| Jeff Hussong | Dr. and Mrs. R. Bruce Shack MD | | Ann V. Roberts |
| Karla Hutton | Tonya Shisler | | Rebecca Robbins |
| Mr. and Mrs. Clyde F. Ingalls | Charles Sidberry | | Earline B. Rogers |
| Susan and Mark Isaacs | Judy and Martin Simmons | | Judith R. Roney |
| Dana Moore and Jack Isenhour | Helen Sirett and Ken Hendrix | | Anne and Charles Roos |
| Christine Jenkins | Debbie and Scott Snoyer | | J. R. Rudd |
| Joni and Lee Jestings | Dr. Peter Sonkin | | Cheryl Rudnicke |
| Dr. James A. Johnson | Laura Sonn | | The Runyeons |
| Barbara and James W. Johnson | Chris and Patrick Sowada | | Representative Charles Sargent |
| Al and Nancy Kaser | David Spigel | | Jean and Stuart Schmidt |
| Teri and A. G. Kasselberg | Judy Steele | | Dr. Alix Weiss Sharp |
| Diane Kelvas | Dee Ann Stone | | Joan Blum Shayne |
| Lisa Kenney | Nancy Sullivan | | Katherine and Kenn Sinclair |
| George and Sue Kettle | Dr. J. Blair Summitt | | Mr. and Mrs. Stephen C. Small |
| Nicholas Kilen | Brenda Swift | | Susan Spiceland |
| Harlon J. Kimbro | Doris R. Taft | | Michael Spitzer |
| Larry Kloess | Alice and Dennis Taunton | | Julie and George Stadler |
| Judy and Herb Knopp | Dr. and Mrs. F. William Taylor | | Andrew Swan |
| Janet and James Knox | Janet Taylor | | Joseph Terlikosky |
| Debra and James Kovanda | Tish | | Gloria F. Thurman |
| Jeff and Pam Kuhn | Byron and Aleta Trauger | | Claire W. Tucker |
| Edd T. Lancaster | Victoria J. Vail | | Frances Anne Varallo |
| Robert Lane | Michael Verble | | Dr. and Mrs. John J. Warner |
| Timothy Larson | Fred Walker, Jr. | | Judith Welhoelter |
| Ben Lauro | Dr. and Mrs. Bill Wall, III | | Allan S. Williams |
| Jean Lawson | Richard Walters | | Irene and Ridley Wills |
| Laura and Robert Ledlow | Cheryl and John Waltko | | Dallas and Fleming Wilt |
| Doyle Lewis, Jr. | Geeta Wasudev | | Dr. Artmas L. Worthy, D.D.S. |
| Carolyn Lowen | Starla and Ralph Weatherell | | T. Allen Wright |
| Brian and Jamie Lucy | Christopher S. West | | Shirley Zeitlin |
| George Lynch | Roberta and Steve West | | |

**Performers
(\$100 - \$299)**

Anonymous (2)
 Kathleen and Douglas Airhart
 The Honorable and
 Mrs. Lamar Alexander
 Mr. and Mrs. Edgar Allen
 Gay and Laurence Alvarez
 Peggy Andrews
 Julia Baker
 Edith McBride Bass
 Bettye Beasley
 Mr. and Mrs. Thomas W. Beasley
 Diane Becker
 Mr. and Mrs. Peter F. Bird
 Mr. and Mrs. Kenneth Blackburn
 Mr. and Mrs. Cecil D. Branstetter
 Jo Ann Brassfield
 Charles and Pam Bridges
 Anna Bright
 Eric and Sue Broder
 Mr. and Mrs. David H. Brown
 Mr. and Mrs. Martin S. Brown, Jr.
 Janice Buchanan
 Craig Campbell
 Mrs. Monroe J. Carell, Jr.
 Nate Carlson
 Richard Cashion
 Barbara and Eric Chazen
 Renée Chevalier
 Mr. and Mrs. William G. Christie
 Mr. and Mrs. Sam E. Christopher
 Charles Cinelli and Coco Vallis
 Mrs. T. H. Clark
 Chuck Clarkson
 Mr. and Mrs. Tom Cone
 Mr. and Mrs. Charles W. Cook, Jr.
 Ronald L. and Brenda J. Corbin
 Beth Crabb
 Dr. Jeanette Crosswhite
 The Honorable and
 Mrs. J. Dewey Daane
 Patricia D'Alessandro
 Carrie Davis
 Caye Davis
 Maclin P. Davis, Jr.
 Kathryn Dettwiller
 Mr. and Mrs. Thomas E. Dodge
 Kathy Doman
 Michael Drish
 Catherine M. Duffy
 Joey Dunagan
 Carol and Mike Dye
 Mr. and Mrs. Thomas S.
 Edmondson, Sr.
 Sharon Edwards
 Kay Ellsworth
 Shary and Rod Essig
 Olivia Evans
 Janice N. Evers
 Cherrie Farnette
 Laura and Sam Faust
 Eleanor and Rick Finney
 Karen and David Ford
 Joan Fox
 Tracey George
 Harris A. Gilbert
 Althea Gill
 Talmadge Gilley
 Alice and Ralph Glassford

preparing for the performance of *life*



Home of the Music Academy at
David Lipscomb Campus School
dlcs.lipscomb.edu



**MIDSOUTH
EXTERIORS**

SINCE 1958 PUT YOUR HOME IN OUR HANDS

**CUSTOM
Sunrooms**
NEVER
PREFABRICATED!



**Replacement
WINDOWS**
30% TAX CREDIT
QUALIFIED!

**SIDING
& TRIM**
DON'T PUT IT OFF.
PUT IT ON!



**FREE
ESTIMATES**
Brenda Fielder
PRESIDENT

833-8003
434 McNally Drive • Nashville, TN
midsouthexteriors.com



WIN THIS HOUSE!

Reserve your \$100 ticket today!



*St. Jude Dream Home®
Giveaway*

**Giveaway
June 27, 2010**



**You Could Win a House.
You WILL Help Fight
Childhood Cancer.**

**For more information, visit
www.dreamhome.org
1-800-746-6713**

Toll-free telephone services and Internet services are provided as a convenience to St. Jude supporters and friends. Reservations do not constitute the sale of a ticket by telephone or by mail. Reservations will be verified and processed by your local St. Jude representatives. Giveaway conducted by ALSAC/St. Jude Children's Research Hospital. Proceeds benefit St. Jude Children's Research Hospital in Memphis, Tenn. ©2010 ALSAC/St. Jude Children's Research Hospital (02076)

**St. Jude Children's
Research Hospital**
ALSAC • Danny Thomas, Founder
Finding cures. Saving children.



**SOUTHERN LAND
COMPANY**




Watkins Community Education Program empowers people of all ages to explore and experience their creativity through classes in drawing, painting, digital art, photography, clay and more. Visit our web site for a schedule of classes.

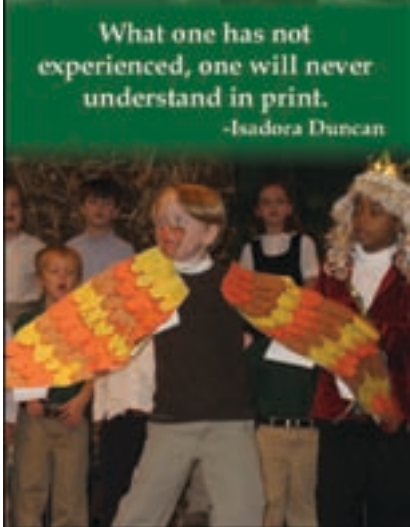
communityeducation
watkins college of art&design | film

watkins.edu/community
615.383.4848 | community@watkins.edu

Pre K-8th Grade NAIS School
www.sumneracademy.org



What one has not experienced, one will never understand in print.
-Isadora Duncan



With eight different Arts and Entertainment publications, we reach a fantastic audience! Whether it's at TPAC, the Schermerhorn Symphony Center, or on the news stand, we celebrate the BEST that Nashville has to offer in Arts & Entertainment.

To advertise or for more information, call 373.5557



The Glover Group Inc.

Where **CREATIVITY** meets **COMMUNITY**



School of Fine & Performing Arts

INSPIRE your creativity
EXPLORE your dreams
CREATE your future

Look at **Lipscomb** now

 **LIPSCOMB** UNIVERSITY
www.lipscomb.edu



**OVER THE TOP EXPERIENCE.
UNDER THE RADAR LOCATION.**

Picture a luxurious getaway, surrounded by whispering pines, sparkling water, 30,000 square feet of meeting space and fine cuisine. It's rated in the top of all Marriotts in North America for service and boasts the prestigious AAA Four Diamond ranking. You will be the hero to your boss and your CFO. Marriott Shoals Hotel & Spa is within a two hour drive of Birmingham, Nashville and Memphis. The 6,000 square-foot spa ranks number seven among Marriott spas worldwide and two challenging Robert Trent Jones Golf Trail courses are moments away. Call today to plan your most affordable and enjoyable meeting yet.

MARRIOTT SHOALS HOTEL & SPA
800 Cox Creek Parkway South, Florence, AL 35630
Phone 256.246.3630, MarriottShoals.com
A part of the Resort Collection on Alabama's Robert Trent Jones Golf Trail





Sarratt gallery at Vanderbilt

JOHAN HAGAMAN

mixed media

September 2-28

Reception: September 10

FARRAR HOOD

paintings

October 1-November 1

Reception: October 1

GÖRGY KÁDÁR

drawings

November 5-30

Reception: November 5

HOLIDAY ARTS FESTIVAL

December 3-13

CHRIS DEAN

lenticular prints

January 18-February 14

Reception: January 21

RICHARD PAINTER

mixed media

February 18-March 26

Reception: February 18

JULIE BLACKMON

photographs

April 1-May 15

Reception: April 1

RECEPTIONS & GALLERY TALKS

5-6:30 p.m. in Sarratt Gallery

www.vanderbilt.edu/sarrattgallery

VANDERBILT UNIVERSITY

Belmont University School of Music SPRING EVENTS

"Grease"

March 19-21, 26-28

Troutt Theater

To purchase tickets, call (615) 460-8500.

Belmont Jazz Festival

Massey Concert Hall, 7:30 p.m.

FREE

Jazz Band April 6

Jazz Band II and Jazz Small Group April 7

String and Bass Ensembles April 8

Jazzmin April 10

21st Annual President's Concert

April 17, 8 p.m.

Honoring Applause Award recipient

The Grand Ole Opry and featuring the

School of Music's student ensembles

and groups. To purchase tickets,

call (615) 460-8500.

Oratorio

April 28, 7:30 p.m.

Performance of "The Creation"

by Joseph Haydn

Massey Concert Hall

FREE

Classical Performers

May 3, 7:30 p.m.

Showcasing the finest classical singers

and instrumentalists accompanied

by the University Orchestra.

Massey Concert Hall

FREE



COLLEGE of VISUAL & PERFORMING ARTS

BELMONT
UNIVERSITY

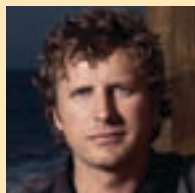
Visit www.BELMONT.edu for information on upcoming concerts,
musicals, operas, theatre performances and more.

*Dinner before the show
& cocktails afterward*


Sheraton
Nashville Downtown
HOTEL

623 Union Street • 615/259.2000
www.sheraton.com/nashvilledowntown

CHECK OUT OUR LINE UP



Dierks Bentley



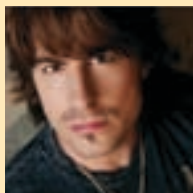
Elvis Costello



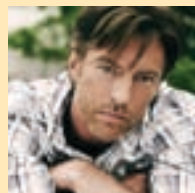
Joey + Rory



Dolly Parton



Jimmy Wayne



Darryl Worley

...and that was just one week.

Discover the Country Music Hall of Fame® and Museum.
Become a member and visit all year for free.



Downtown Nashville • 615.416.2001 • www.CountryMusicHallofFame.org

HONOR THY MUSIC®

The Country Music Hall of Fame® and Museum is operated by the Country Music Foundation, Inc.,
a Section 501(c)(3) non-profit educational organization chartered by the state of Tennessee in 1964.

SERVING OVER 10,000 WOMEN & MEN EACH YEAR

Hope Clinic for Women

provides women and men with
a safe environment for medical
care, counsel, and practical
support. With most services
free of charge, we rely on your
generosity to help us grow!

Ask us about:

- Volunteer opportunities
- In kind donations
- Financial support opportunities
- Open Houses

www.hopeclinicforwomen.org

 **hopeclinic**
for women
a Safe Place for Tough Choices

*Equipping people, since 1983,
to make healthy choices with
unplanned pregnancies,
abstinence, and past abortions.*



WE PLANT
THE SEED



ST. EDWARD
CATHOLIC SCHOOL

PRE-K-8TH
190 THOMPSON LN. • NASHVILLE • 37211
WWW.STEDWARD.ORG • 615.833.5770



Collision Repair Centers

*Performance That
Exceeds Expectations*



BBB Torch Awards

for Market Place Ethics

Trust • Performance • Integrity

Recipient • BBB Middle Tennessee

4 Locations:

COOL SPRING

DOWNTOWN NASHVILLE

MADISON & GALLATIN

Visit us on the web at:

www.bradshawcollision.com

"Proud Sponsors"



*Oak Hill School
students shine
on stage and
throughout life.*



**Oak Hill
school**

PreK - 6th Grade
4815 Franklin Road, Nashville
www.oakhillschool.org
615-297-6544

Fostering lifelong learning and service in a Christian environment

christ church cathedral
sacred space for the city

Arts Series

We open our home,
A Sacred Space for the entire city.

Celebrating and nurturing
God's gift of creativity.

Exploring our own
creative gifts.

Our gift to the community.
Our gift to YOU!

March 26, 2010
4th ANNUAL BACHANALIA

April 17, 2010
YOUR INNER ARTIST
Container Gardening Workshop

April 30, 2010
JEAN-BAPTISTE ROBIN
Organ Concert

May 2, 2010
CHORAL EVENSONG with
Emily Butcher, organist

June 14-18, 2010
ICON WRITING WORKSHOP
A spiritual journey open to all

October 7-16, 2010
TARTUFFE

for details, please visit
christcathedral.org/sacredspace

Restaurant
(615) 248-4747



Catering
(615) 726-4938

Pass the Peas...Please!

**Great Southern Food Served Family Style
in Historic Settings**

Nashville • Franklin • Gallatin



Serving Lunch, Dinner and Weekend Country Breakfast

Now Open Cafe Monell's Near 100 Oaks

www.MonellsTN.com

TACA...Connecting crafts and people since 1965

Artist: Donna Rizzo



May 7, 8 & 9

Fri. & Sat. 10 am – 6 pm • Sun. 10 am – 5 pm
NASHVILLE'S CENTENNIAL PARK

Free admission and parking
Hands-on kids activities & demonstrations

TACA

39th Annual
Tennessee Craft Fair
www.tennesseecrafts.org

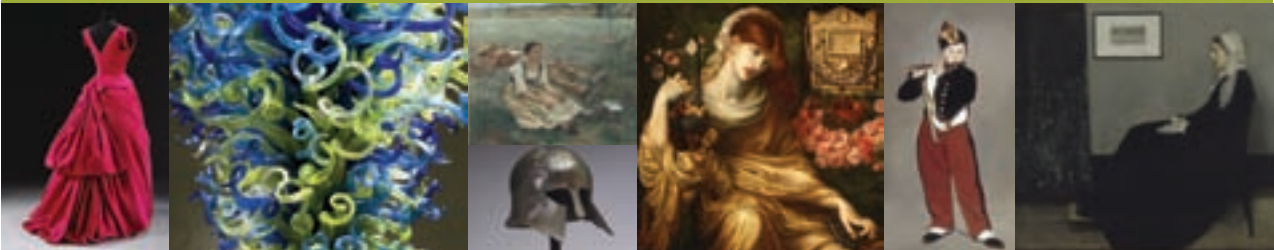
PAINTING DANCE
THEATRE BAND
SCULPTURE CHORUS
PALETTE

GOODPASTURE
Christian School

Come see the new
Goodpasture, and
THE JOY OF
Creativity!

619 Due West Ave. • Madison, TN
Ph: 868-2600, Ext. 212 • www.goodpasture.org
Building Confidence, Intellectual Growth, and Spiritual Strength.

2010 THE BEST YEAR YET TO JOIN THE FRIST



2010 AT THE FRIST

Heroes: Mortals and Myths in Ancient Greece
Masterpieces of European Painting from Museo de Arte de Ponce
Chihuly at the Frist
The Golden Age of Couture: Paris and London, 1947-1957
The Birth of Impressionism: Masterpieces from the Musée d'Orsay

JOIN TODAY Receive unlimited free visits and member discounts for a year.

**JOIN ONLINE
AT
fristcenter.org**

V&A
The Golden Age of
Couture is organized by
the Victoria and Albert
Museum, London

**Musée
d'Orsay**

Evening dress by Cristóbal Balenciaga. Silk tulle, 1953-4. Given by Miss C. Coombe, Collection of the Victoria and Albert Museum, London T.427-1967. © V&A Images/Victoria and Albert Museum. Dale Chihuly. Sea Blue and Green Tower (detail), 2008. 15 x 8 x 7. Legion of Honor, San Francisco. Photo by Terry Rishel. © 2009, Dale Chihuly. Jules Bastien-Lepage. Les Foires, 1877. Oil on canvas, 160 x 195 cm. Musée d'Orsay, Paris, France. © Réunion des Musées Nationaux. Corinthian Helmet, ca. 700-500 BCE. Bronze, H. 99/16 x W. 83/16 x D. 10 1/8 in. The Walters Art Museum, Baltimore. Dante Gabriel Rossetti. Roman Widow, (Dis Manibus), 1874. Oil on canvas, 41 3/8 x 36 9/16 in. Collection Museo de Arte de Ponce. The Luis A. Ferré Foundation, Inc., Ponce, Puerto Rico. 60.0149. Photograph by John Betancourt. Edouard Manet. Le Filin, 1866. Oil on canvas, 161 x 97 cm. Musée d'Orsay, Paris, France. © Réunion des Musées Nationaux/James Abbott McNeill Whistler. Arrangement in Gray and Black No. 1, or The Artist's Mother, 1871. Oil on canvas, 144.3 x 162.5 cm. Musée d'Orsay, Paris, France. Photo: J.G. Berizzi. © Réunion des Musées Nationaux/Art Resource, NY. Heroes: Mortals and Myths in Ancient Greece is supported by an indemnity from the Federal Council on the Arts and the Humanities.

FRIST

CENTER FOR THE VISUAL ARTS®
Downtown Nashville
615-244-3340



The most painful part of joint replacement surgery is putting it off.

Pain is more than just physical discomfort. It's a barrier that gets between you and your favorite things in life. But with our advancements in joint replacement, Vanderbilt Orthopaedics can help make your pain a thing of the past. New forms of anesthesia allow surgery to be much less painful and allow you to begin physical therapy sooner. You could be back to your former self – without your former pain. For more information, visit vanderbiltorthopaedics.com.

Nashville: 615.343.9430
Franklin: 615.790.3290

Vanderbilt **Orthopaedics**



What if she could...

Lead her own conferences?

Receive her "tutoring" *during the school day*?

Learn how to *organize* her work and *advocate* for her learning style - from day one?

Feel known, supported and *challenged* every day?

Get into the *college* of her choice and earn a merit-based scholarship?

Stop asking. Call or visit Currey Ingram Academy today.

PHONE (615) 507-3173



CURREYINGRAM.ORG

Developing Minds, Building Character, Achieving Success ... Since 1968

Currey Ingram Academy is a K-12, independent school offering a personalized educational experience and a full complement of arts, athletics and social activities.

NEW HIGH SCHOOL BUILDING OPENED IN APRIL 2009

MIDTOWN CAFE

**We Offer
Free Shuttle Service
with dinner reservations to:**

TPAC, Symphony,

Ballet, Opera

Ryman Concerts,

Sommet Center,

& Downtown Hotels.

Affordable Casual Fine Dining

**Between
West End & Broadway
at 19th Avenue
615-320-7176
midtowncafe.com**

no online shuttle reservations

Nurturing the Spirit

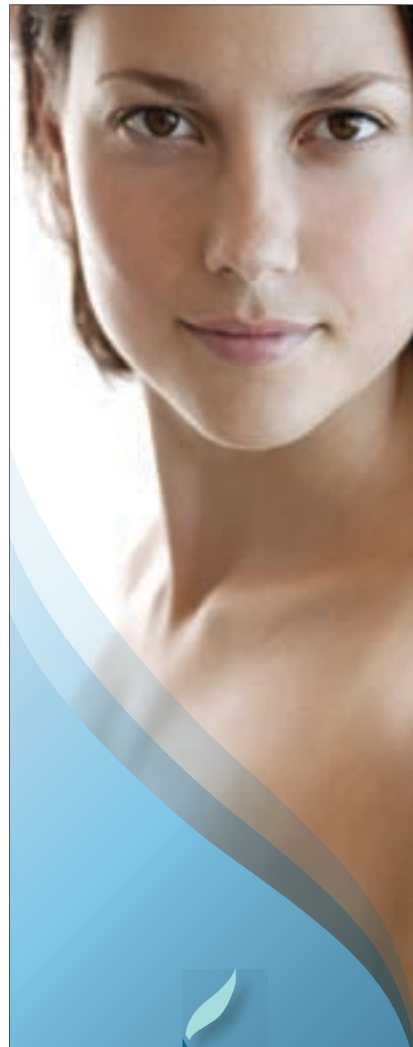
HARDING ACADEMY



Harding Academy exists to educate, nurture, and inspire. As a co-educational K-8 independent school, we are dedicated to academic excellence and the pursuit of educating thoughtful, creative, life-long learners who are self-disciplined, responsible, caring citizens.

*Ian L. Craig, Head of School
170 Windsor Drive
Nashville, TN 37205
(615) 356-5510
www.hardingacademy.org*

Inspiring the Mind



**PENA MD
STUDIO**

Where beauty begins.

PenaMDStudio.com

call us at 615.771.5355

**401 Cool Springs Boulevard
one mile from I-65**

**Julie M. Pena, MD
FREE Consults Available**

A SUBSIDIARY OF SKIN SOLUTIONS DERMATOLOGY
& SKIN CANCER SURGERY, PC
WWW.SSDERMANDLASER.COM



P.F. CHANG'S®

**WHY WAIT TO
ENJOY THE FOOD
YOU LOVE?**

Make your reservation today!

NASHVILLE
2525 West End – 615.329.8901

COOL SPRINGS
439 Cool Springs Blvd – 615.503.9640

pfchangs.com

Odyssey Hospice | CareConnect™ Palliative Care



Compassion | Comfort | Dignity | Quality Care



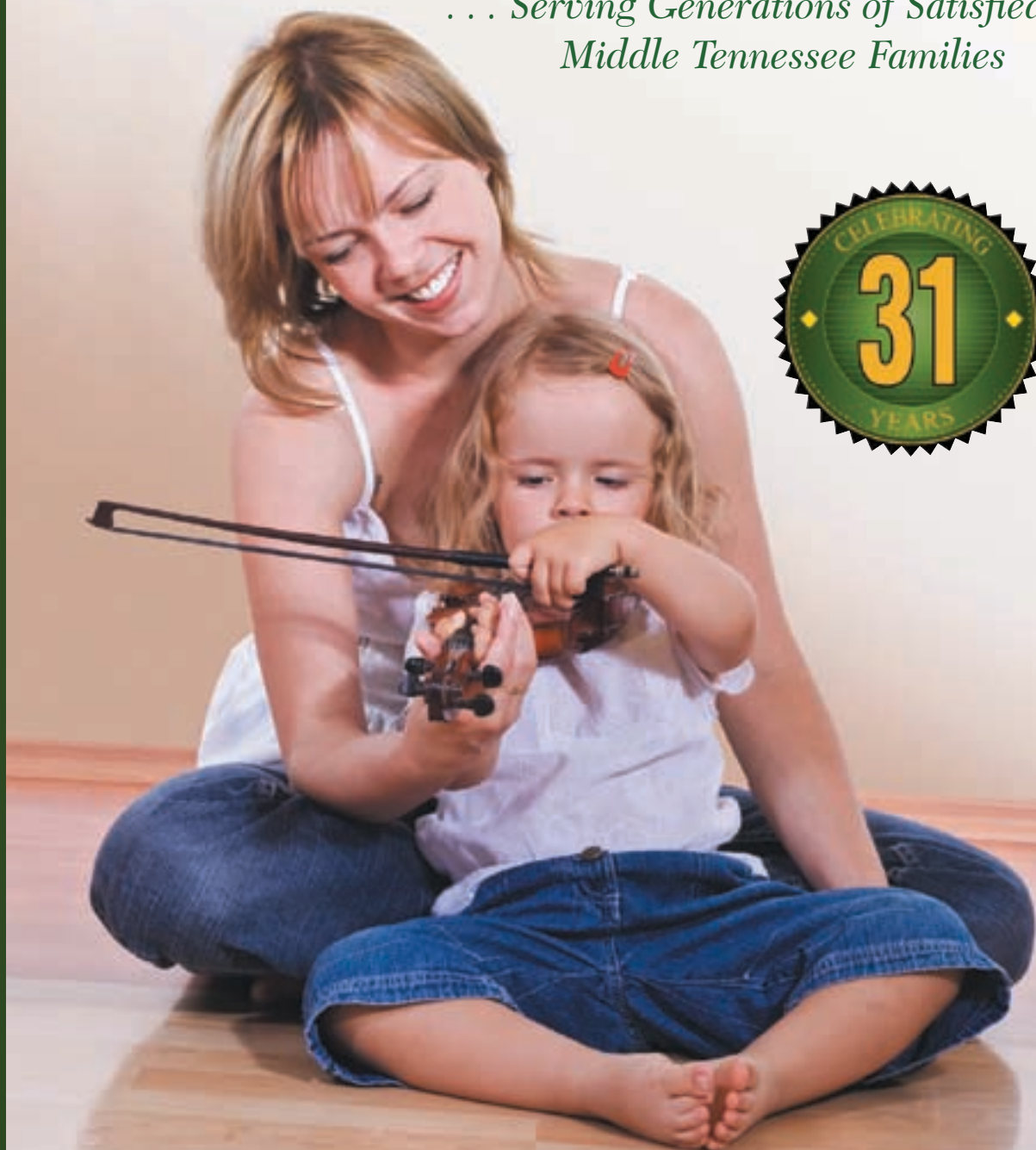
Hospice & Palliative Care...Redefined

*For Information | Contact Us
ph 615-365-1009 | fax 615-366-3419*

www.odsylhealth.com

Carpet Den Interiors

*... Serving Generations of Satisfied
Middle Tennessee Families*



HARDWOOD • RUGS • TILE • NATURAL STONE



CARPET DEN INTERIORS

... the first step to a beautiful home!

264 MALLORY STATION ROAD, COOL SPRINGS • 615-771-0128

www.carpetden.com

Celebrating the **best** Nashville has to offer in **Arts & Entertainment**.

For more information visit us online at www.NashvilleArtsandEntertainment.com

The Glover Group, Inc.
5123 Virginia Way :: Brentwood, TN 37027
615.373.5557 (ph) :: 615.373.5370 (fax)



a simpler way to build a custom home on your lot.



With Design Gallery Homes, you'll discover award-winning designs, legendary craftsmanship, and an endless palette of choices to create a home that's uniquely yours. You'll move into your home in less time and pay less than what other builders may require. Best of all, your home is backed by a family-owned company with an 80 year legacy of building quality homes. If you own a lot or need help finding one, we're ready to serve you.

For your free lot evaluation or to learn more, call 376-9498



dreeshomes.com

©2008 Dress Premier Homes, Inc. All Rights Reserved.



2009-2010 Season

The logo features a large, stylized 'R' in white with a black outline, set against a red background. To the right of the 'R' is the number '25' in a grey, serif font. Below the '25' is a small white star followed by the word 'Years' in a white, cursive script.

Tennessee Repertory Theatre

Steel Magnolias

by Robert Harling

October 3–24, 2009



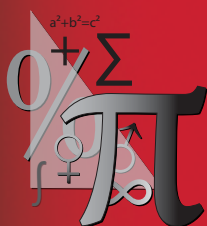
A Christmas Story

adapted by Phillip Grecian

Nov. 21–Dec. 19, 2009



based on the motion picture
by Jean Shepherd, Leigh Brown,
and Bob Clark



Proof

by David Auburn

February 6–20, 2010

Big River:

The Adventures of Huckleberry Finn

music and lyrics by Roger Miller

book by William Hauptman

March 20–April 10, 2010

based on the classic
novel by Mark Twain

EDUCATING SCHOLARS WITH INTEGRITY AND BALANCE

franklinroadacademy.com • 615.832.8845



FRANKLIN
ROAD
ACADEMY



Where
Children
Are At Home
With The Arts

PREKINDERGARTEN THROUGH GRADE 12

**SO MUCH TO DO.
SO LITTLE TIME.**

EXCLUSIVE TICKET DISCOUNTS. **MUSIC.** THEATRE. FESTIVALS. ARTS. DANCE. **FESTIVALS.** SPORTS. FREE EVENTS. FAMILY ACTIVITIES. EXCLUSIVE TICKET DISCOUNTS. MUSIC. **THEATRE.** FESTIVALS. ARTS. DANCE. SPORTS. FREE EVENTS. FAMILY ACTIVITIES. EXCLUSIVE TICKET DISCOUNTS. MUSIC. THEATRE. **ARTS.** FESTIVALS. DANCE. FAMILY ACTIVITIES. **SPORTS.** FREE EVENTS. FAMILY ACTIVITIES. EXCLUSIVE TICKET DISCOUNTS. MUSIC. THEATRE. FESTIVALS. SPORTS. **DANCE.** FREE EVENTS. FAMILY ACTIVITIES. EXCLUSIVE TICKET DISCOUNTS. MUSIC. THEATRE. FESTIVALS. ARTS. SPORTS. **FAMILY ACTIVITIES.** FREE EVENTS. EXCLUSIVE TICKET DISCOUNTS. MUSIC. THEATRE. FESTIVALS. ARTS. DANCE. SPORTS. FREE EVENTS. **FREE EVENTS.** EXCLUSIVE TICKET DISCOUNTS. MUSIC. THEATRE. FESTIVALS. ARTS. DANCE. SPORTS. FREE EVENTS. FAMILY ACTIVITIES. MUSIC. FESTIVALS. **EXCLUSIVE TICKET DISCOUNTS.** A

NowPlayingNashville ★.com

YOUR SOURCE FOR WHERE TO GO ... WHAT TO DO IN MIDDLE TENNESSEE

AN INITIATIVE OF THE COMMUNITY FOUNDATION OF MIDDLE TENNESSEE
THEATRE. FESTIVALS. ARTS. DANCE. SPORTS. FREE EVENTS. FAMILY

Think globally. Print locally.



A WORLD OF PRINT SOLUTIONS

As one of middle Tennessee's oldest printers, our roots run deep. Not just in the local community, but across the globe. After all, we're part of a nationwide network of commercial printers. But more than that, we're also participants in the worldwide movement to sustain the planet. In fact, we recently became the first full-service commercial printer in Nashville to be certified by the Forest Stewardship Council.

**Now one of the areas most trusted companies is one of the most
ecologically responsible, too.**

McQuiddy Classic Printing.

SW-COC-002807

711 Spence Lane, Nashville, TN 37217 (615) 366-6565 or (800) 882-4444 www.mcquiddyclassic.com



CapStar board member and TPAC supporter Jay Turner with his wife Christi



CapStar president and CEO and TPAC board member Claire Tucker



PROUDLY INVESTING IN THE ARTS.

AT CAPSTAR BANK, WE BELIEVE IN CONTRIBUTING TO CAUSES THAT HELP ENRICH LIVES IN MIDDLE TENNESSEE. THAT'S WHY WE'RE PROUD TO SUPPORT THE ARTS IN NASHVILLE. IT'S AN INVESTMENT THAT WILL PAY DIVIDENDS FOR GENERATIONS TO COME.



CAPSTAR
BANK

201 4TH AVENUE N, SUITE 950 • NASHVILLE, TN 37219
5500 MARYLAND WAY • BRENTWOOD, TN 37027
2321 CRESTMOOR ROAD • NASHVILLE, TN 37215
PHONE: 615.732.6400 • FAX: 615.732.6401
WWW.CAPSTARBANK.COM

Community • Knowledge • Service



*"Experience a Lifetime of Community
at Christ the King School."*

**Kindergarten - Eighth Grade
SACS & State Accredited
3105 Belmont Boulevard
Nashville, Tennessee 37212
(615) 292-9465
www.ctk.org**

From Hunger to Hope

This marks our 55th year of serving the poor and hurting of our community. Your faithful support and compassion has helped thousands of men, women and children get back on their feet, reconcile broken families and restore lives. The Nashville Rescue Mission is honored to call you friend and grateful for your tireless efforts on behalf of the homeless of our city.



**NASHVILLE
RESCUE MISSION**

639 Lafayette Street

www.nashvillerescuemission.org

(615) 255-2475

Affordable Excellence.... Ezell-Harding Christian School

PreK-12 Independent Private School

2009-2010 Tuition: \$6250

\$800 Second Child Discount

Fully accredited by Southern
Association of Colleges and Schools

TSSAA Sports Participation Division II

www.ezellharding.com

...where students can learn
for their future on earth and
for eternity.

TPAC FACILITY INFORMATION

CONCERNS OR COMPLIMENTS?
E-MAIL PATRONSERVICES@TPAC.ORG

Accessibility Services at TPAC include parking; elevators; wheelchair seating; use of a TPAC wheelchair; designated restrooms; and services for hearing and visually impaired patrons. Infrared assisted listening devices are available at no charge at the entrance to each theater. TPAC offers signing for hearing impaired patrons, and audio description and Braille programs for blind and visually impaired patrons on the Sunday matinee in the HCA/TriStar Broadway at TPAC Series. The third Saturday matinees of Tennessee Repertory Theatre plays also are signed. Large print programs are available for shows in the Broadway, TPAC Presents and Family Field Trip series. Special accessibility requests and concerns, excluding assisted listening headsets, should be discussed in advance with the TPAC House Manager at 615-782-4087. Reservations for a TPAC wheelchair should be made on the day of performance.

Restrooms for Andrew Jackson Hall are located one level down from the 6th Avenue entrance; in the halls behind the seats in the tier and balcony; and downstairs in the back of the orchestra level. Restrooms for Polk Theater are located down the stairs to the left of the entrance to the orchestra level and on the balcony level.

All cellular phones, pagers, watch alarms, cameras, recorders and other electronic devices should be turned off prior to the performance or checked-in with the floor manager or an usher, who will note the seating location of physicians and others who expect emergency calls.

Call "Lost and Found" at 615-782-4098 to report an item which may have been left at TPAC.

In case of an emergency, the number to leave with others is 615-782-4000 (along with performance attending, theater, and seat location).

Smoking is permitted outside of the building.



333 Broadway • Hartsville, TN 37074

(615) 374-4243

www.tullysbistro.com

**Let us design a custom menu
for your special occasions!**

Weddings - Family Reunions
Anniversaries - Birthdays
Business Meetings

Check our website for live music
and entertainment events schedule!

Dine-In Hours:

MON - THU 10 am - 2 pm, 5 - 8 pm

FRI & SAT 10 am - 2 pm, 5 - 9 pm

Closed on Sunday

Private room reservations available for large parties



25 Years Strong

CLC provides a foundation to
equip men to be strong
Christian leaders in their
respective homes, churches,
communities and the
marketplace.



**For Additional Information
visit our website at:**

www.christianleadershipconcepts.org



FACILITY INFORMATION

Location The Ingram Center for Performing Arts is located at the corner of 24th Avenue and Capers Avenue.

Late Arrivals Late arrivals will be seated only at times designated by the artists and/or company. Please consult ushers stationed at the entrances of the orchestra level.

Discounted Parking
Discounted parking for Ingram events is available in the Capers Avenue Garage at the corner of 24th Avenue and Capers Avenue. Please show ticket stubs when exiting.

No Smoking There is no smoking allowed in any building on University campus.

Restrooms In the Ingram Center, restrooms are located in the rear of the lobby area.

Accessibility Wheelchair accessible seating, restroom and radio frequency assistive hearing devices are available in Ingram Hall. Please call 322-2471 at least three days in advance of the performance date to make arrangements for all special needs.

Lost and Found Please call University Security at 322-2745.



TWO MOONROOFS ARE
ALWAYS BETTER THAN ONE.



Nissan Murano

The only crossover to bring it all to you: We loaded it with innovative ideas, like a dual panel moonroof for a flood of natural light. And a rear seat that appears with a touch of a button.** Even details like double-stitched seats became big ideas. The Nissan Murano brings it all together in one beautiful place. Look Closer. Nissan Delivers. **NissanUSA.com**



SHIFT_ the way you move

*Non-luxury crossovers as defined by Ward's 2010 segmentation. **Available feature. When operating the rear power-seatback return, make sure that the vehicle is stopped and the transmission is in the P (Park) position. Tread Lightly!® Please. Always wear your seat belt, and please don't drink and drive. ©2010 Nissan North America, Inc.



Christopher Designs

Crisscut®

• NEW YORK •



If dreams came in shapes...

Crisscut® Diamond

Genesis Diamonds



The Official Jeweler of The Tennessee Titans



3742 Hillsboro Pike • Nashville, TN 37215

1731-A Mallory Lane • Brentwood, TN 37027

Tel: 615-269-6996

Tel 615-371-6765

Hours: Monday-Friday 10:00-7:00, Saturday 10:00-5:00 • Offering 100% satisfaction guarantee & 90-day price protection.

www.genesisdiamonds.net