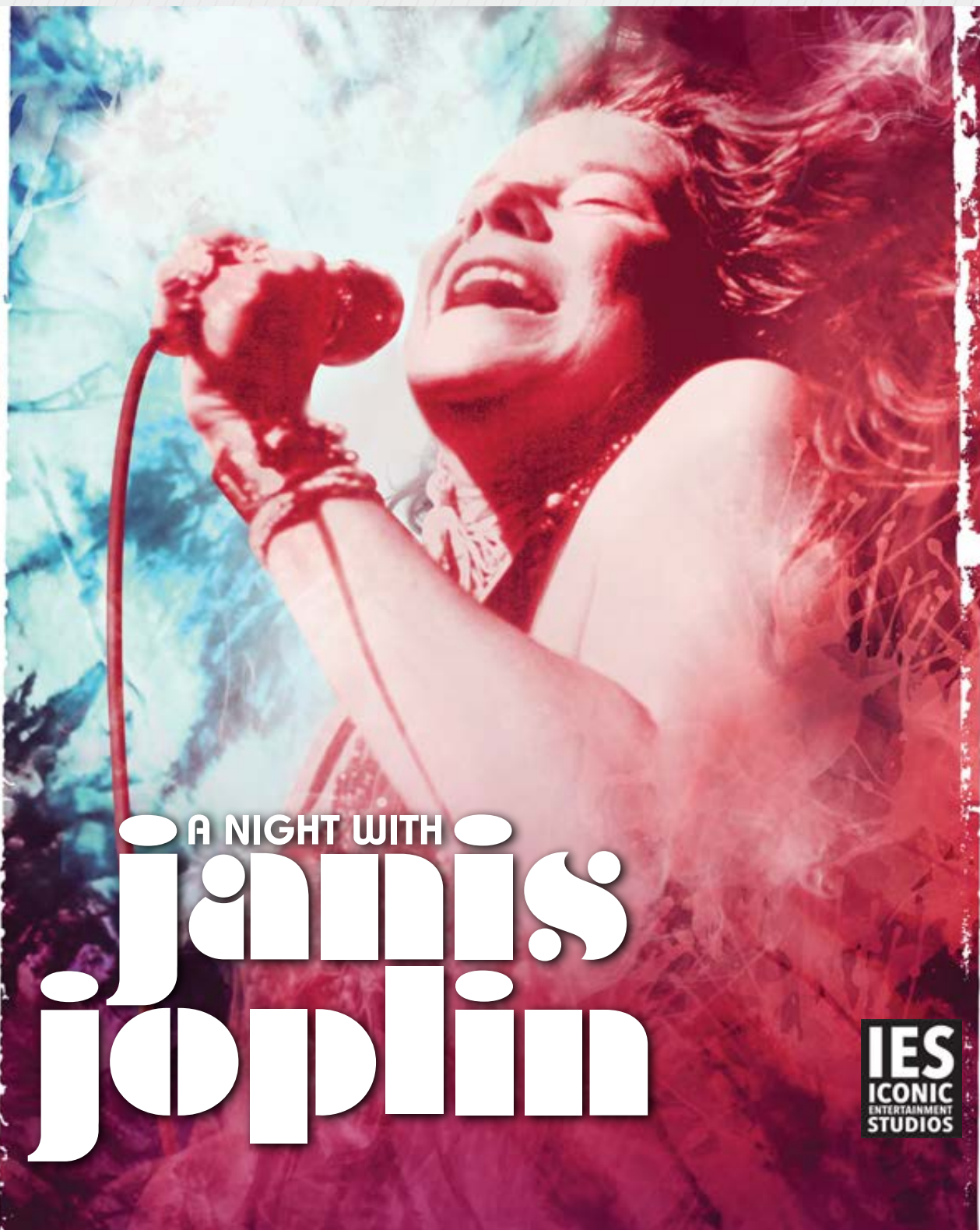




CENTER STAGE

A NIGHT WITH JANIS JOPLIN, April 15-16, 2016 • The official playbill of the Tennessee Performing Arts Center



A NIGHT WITH janis joplin



Mamma Mia!
April 26 – May 1

**An Evening with
Alice Cooper**
May 2

**The Bridges of
Madison County**
May 10-15

**Disney's Beauty
and the Beast**
May 31 – June 5

**Gregory
Porter**
June 4

**FOR TICKETS:
615-782-4040
TPAC.ORG**

ALL-NEW JAGUAR XF

THIS IS NOT BUSINESS AS USUAL



With a lightweight aluminum body and a supercharged 380 hp V6 engine, the 2016 XF is uncommonly quick. Coupled with leading edge technology, it delivers a unique and intuitive driving experience. And with Best-In-Class coverage including complimentary scheduled maintenance, you'll find the XF is anything but expected.*

Call or visit to find out more:

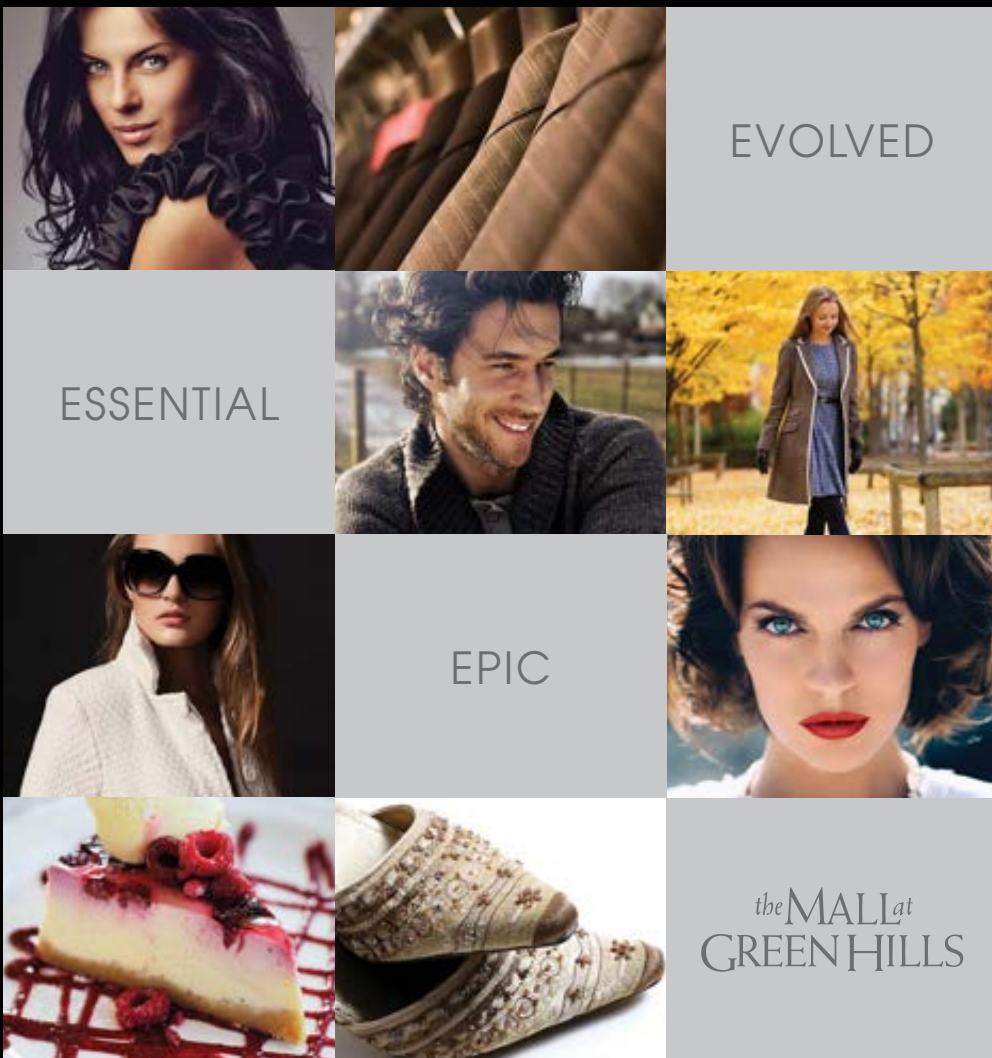
Jaguar Nashville
3 Cadillac Drive
Brentwood, TN 37027
615-986-6000
JaguarNashville.com

THE ART OF PERFORMANCE

2016 Jaguar XF S vehicle shown. *Class is cars sold by luxury automobile brands and claim is based on total package of warranty, maintenance and other coverage programs. For complete details regarding Jaguar EliteCare coverage, please visit JAGUARUSA.COM, call 1.800.4.JAGUAR or visit your local Jaguar Retailer. © 2015 JAGUAR LAND ROVER NORTH AMERICA, LLC

JAGUAR ELITECARE BEST IN CLASS COVERAGE 5 YEARS 60,000 MILES

- 🛡️ New Vehicle Limited Warranty
- 🔧 Complimentary Scheduled Maintenance
- 🚑 24-Hour Roadside Assistance
- 📶 Jaguar InControl® Remote & Protect™



APPLE • BCBGMAXAZRIA • BURBERRY • THE CHEESECAKE FACTORY
 THE CONTAINER STORE • DAVID YURMAN • FREE PEOPLE • GUS MAYER
 HANNA ANDERSSON • J.CREW • JIMMY CHOO • KATE SPADE NEW YORK
 LOUIS VUITTON • LILLY PULITZER • MAC COSMETICS • MADEWELL
 OMEGA • RESTORATION HARDWARE • SEPHORA • STUART WEITZMAN
 THE NORTH FACE • TIFFANY & CO. • TORY BURCH • TUMI

the MALL *at* GREEN HILLS

NORDSTROM • DILLARD'S • MACY'S

OVER 100 SPECIALTY SHOPS & RESTAURANTS
 HILLSBORO PIKE, I-440 EXIT 3 • NASHVILLE, TN • SHOPGREENHILLS.COM

Letter from the Publishers

Dear Readers,

We would like to take a moment to acknowledge and honor some of the people who have made a significant impact on arts & entertainment in our city...both from a creative and philanthropic standpoint.

Last year through the pages of our annual newsstand magazine, Nashville Arts & Entertainment Magazine, we began the first annual Nashville Arts & Entertainment Honors.

The 2014-2015 recipients of these honors were: Jeffrey Steele, Steve Buchanan, Martha Ingram, Dr. Thomas Frist Jr. and Vince Gill. Nashville Arts & Entertainment Magazine donated \$1,000 to each of these honoree's local charities.

Our 2015-2016 honorees have just been announced in the new edition of Nashville Arts & Entertainment Magazine, and include: Kathleen O'Brien, John Huie, Nicole Kidman and Alan D. Valentine. To read more about their contributions to arts & entertainment, pick up a copy of Nashville Arts & Entertainment Magazine at area newsstands or order a copy online at: NAEMag.com

We want to also acknowledge and thank our advertisers. As you read your program, please make special note of the companies that advertise. We could not do what we do without their belief in the value of advertising in the arts' publications. You love the arts and so do our advertisers...do business with them when you can!

To learn more about how your company can benefit from an annual ad campaign, go to GloverGroupEntertainment.com or give us a call at 615-429-9689. We provide Nashville and Franklin with a one-stop option for arts and entertainment information and advertising

For additional information and special online promotions, please follow us on Facebook and Twitter. Thank you!

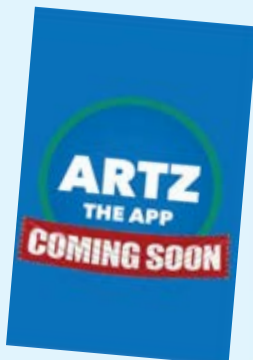
Robin & Gary

Robin@GloverGroupInc.com
Gary@GloverGroupInc.com

For additional information and special online promotions, please "like" us on Facebook and follow on Twitter

www.NashvilleArtsandEntertainment.com
www.GloverGroupEntertainment.com

NASHVILLE'S PERFORMING ARTS PUBLICATIONS For Advertising Information, please call 615.429.9689





At Bridgestone
Americas,
performance is
in our blood.
That's why
we're proud to
call Nashville home.

You'll find more than 2,300 Bridgestone teammates
hard at work and play in the communities we call home.
Interested in joining us? Be great. Be Bridgestone.



Join our team of performers at [BeBridgestone.com](https://www.bridgestone.com/bebridgestone)

BRIDGESTONE
Your Journey, Our Passion



Earache.
Fever.
Saturday night.

When you need a pediatrician and your pediatrician's office is closed, bring your child to Vanderbilt Children's After-Hours Clinics. A board-certified Vanderbilt pediatrician is on site nights and weekends, treating everything from flu and fevers to rashes and beans in ears. No appointment necessary — just walk right in. We'll even send your child's pediatrician a same-day report about your visit. For more information, visit [VanderbiltChildrensAfterHours.com](https://www.vanderbiltchildrensafterhours.com).

Vanderbilt Children's After-Hours Clinics

**Open nights and weekends in
Brentwood, Hendersonville, Mt. Juliet and Spring Hill**

No referral necessary, but please call your pediatrician first.



The BMW X5

bmwofnashville.com



The Ultimate
Driving Machine®



YOU DON'T NEED A CROWD TO STAND OUT.

THE BMW X5.

With optional third-row seating, up to seven people can go somewhere they've never been before. And with Panoramic Moonroof, BMW Online™ features like Real Time Traffic Information and Internet, and optional Premium Interior, the journey might just outclass the destination.

Special lease and finance offers will be available through BMW Financial Services.

BMW of Nashville | 4040 Armory Oaks Drive | Nashville, TN 37204 | 800-531-0215 | bmwofnashville.com

©2016 BMW of North America, LLC. The BMW name, model names and logo are registered trademarks.



CRYSTORAMA



Lighting



Appliances



Custom Cabinetry



Hardware & Plumbing



Hermitage
Lighting
Gallery

531 Lafayette Street
Nashville, TN | 615•843•3300
Monday - Friday 8 to 5 | Saturday 9 - 5
www.hermitagelighting.com



Get comfortable with using less energy at home.

Turn your house into the sanctuary it should be. Visit 2eScore.com to find out how energy efficient your home is and what you can do to improve it. With a high eScore and lower energy costs, you'll be able to live comfortably.





STEINWAY PIANO GALLERY NASHVILLE

For over 160 years Steinway has been making instruments so passionately conceived and meticulously crafted, it can take dozens of artisans with decades of experience twelve months to create ... one.



www.SteinwayFamilyPianos.com

Since 1929, we have offered the very best pianos in every price range, as a result we consistently sell more pianos than anyone else in Nashville!

“WHEN WE GOT TO WILLIAMSON, THERE WERE PEOPLE WAITING ON ME. THEY KNEW EXACTLY WHAT TO DO.”

—ELIZABETH TYER

AT WILLIAMSON MEDICAL CENTER, OUR STORY IS BEST TOLD BY OUR PATIENTS.

They have been here. They know us well.

To Elizabeth Tyer, Williamson Medical Center is where she got her life back. She never expected to have a “widow maker” heart attack in her early 40s, but when she called EMS after sickness that worsened by the hour, our paramedics were able to communicate the status of Elizabeth’s condition so that when they arrived, doctors and nurses were standing by and ready to go.

She had a stent inserted into her aortic artery within the hour and credits the fast response time and knowledgeable cardiologists at WMC with the reason she is here to tell her story today.

We want to hear your story.

MYSTORY@WMED.ORG



4321 CAROTHERS PARKWAY • FRANKLIN
williamsonmedicalcenter.org



You bank with people.

CapStar's Private Banking team knows what makes Nashville tick. It's a city where a handshake still matters. Where looking people in the eye and delivering on a promise isn't old-school, it's the expectation. After all, it's not just your money on the line, it's our reputation. That matters. You matter. And that's our matter of fact way of saying we'll deliver a smarter, more personalized banking experience than the other guys.



capstarbank.com

Member FDIC



Build a Customized Drees Home Anywhere

Whether you already own a lot, need help finding a site, or have a particular property in mind, Design Gallery Homes makes it easy to build a customized home anywhere you want to live.

- Firm contract pricing
- Save thousands with no construction loan
- One-stop selections process
- Formal follow-up program

Homes from the \$270s to the \$800s+, plus home site

For a free lot evaluation or to learn more, call (615) 371-9750 or visit dreeshomes.com



**DESIGN
GALLERY
HOMES**
by Drees



©2014 Drees Premier Homes, Inc. All Rights Reserved.



From Darkness to Sight

FOREWORD BY SENATOR WILLIAM FRIST, MD

FROM DARKNESS TO SIGHT

A JOURNEY FROM HARDSHIP TO HEALING

MING WANG Harvard/MIT (MD)
PhD (laser physics)

From Darkness to Sight chronicles the remarkable life journey of Dr. Ming Wang, a world-renowned laser eye surgeon and philanthropist.

As a teenager, Ming fought valiantly to escape one of history's darkest eras – China's Cultural Revolution – during which millions of innocent youth were deported to remote areas to face a life sentence of poverty and hard labor. Through his own tenacity and his parents' tireless efforts to provide a chance of freedom for their son, Ming eventually made his way to America with \$50 in his pocket and an American dream in his heart, where against all odds he would earn a PhD in laser physics and graduate magna cum laude with the highest honors from Harvard Medical School and MIT. He embraced his Christian faith and tackled one of the most important questions of our time – Are faith and science friends or foes? – which led to his invention of a breakthrough biotechnology to restore sight.

To date, Dr. Wang has performed over 55,000 eye procedures and has treated patients from nearly every state in the U.S. and from over 55 countries worldwide. He is considered the "doctor's doctor," as he has operated on over 4,000 physicians. Dr. Wang has published 8 textbooks and a paper in the world-renowned journal *Nature*, holds several U.S. patents and performed the world's first laser artificial cornea implantation. He is the recipient of the Honor

Award from American Academy of Ophthalmology and the Lifetime Achievement Award from American Chinese Physician Association. Dr. Wang is currently the only surgeon in the state who performs 3D LASIK (18+), 3D Forever Young Lens Surgery (45+), 3D Laser Kamra (45+) and 3D Laser Cataract Surgery (60+). Dr. Wang established a non-profit foundation which provides sight restoration surgeries for indigent patients who otherwise would never have the opportunity to receive them free-of-charge.

This is a story of one man's inspirational journey, of turning fear, poverty, persecution and prejudice into healing and love for others. It demonstrates how focus, determination, humility and profound faith can inspire a life that, in turn, impacts that of countless others.



Tripping down the theatre stairs was not something you had planned for...



neither was your trip to the **ER**

Since everything in life can't be planned, isn't it good to know you can count on short ER wait times at 12 TriStar Health emergency rooms in the greater Nashville area? Emergencies are our first priority and our wait times reflect that sense of urgency whether you have breaks or strains, stomach pains, pounding headaches or chest pain. Emergency trained physicians provide fast and friendly medical care close by so you can get back to the activities you enjoy most.



TRISTARHEALTH.COM



MAKE YOUR HOME A SHOW HOUSE.



The Nashville Symphony Show House 2015 (*shown here*), masterfully crafted by Castle Homes. DON'T JUST BUILD A NEW HOME, LET US CREATE YOU A SHOW HOUSE!

CUSTOM HOMES | REMODELING | INTERIOR DESIGN

615.309.8200

CASTLEHOMES.COM

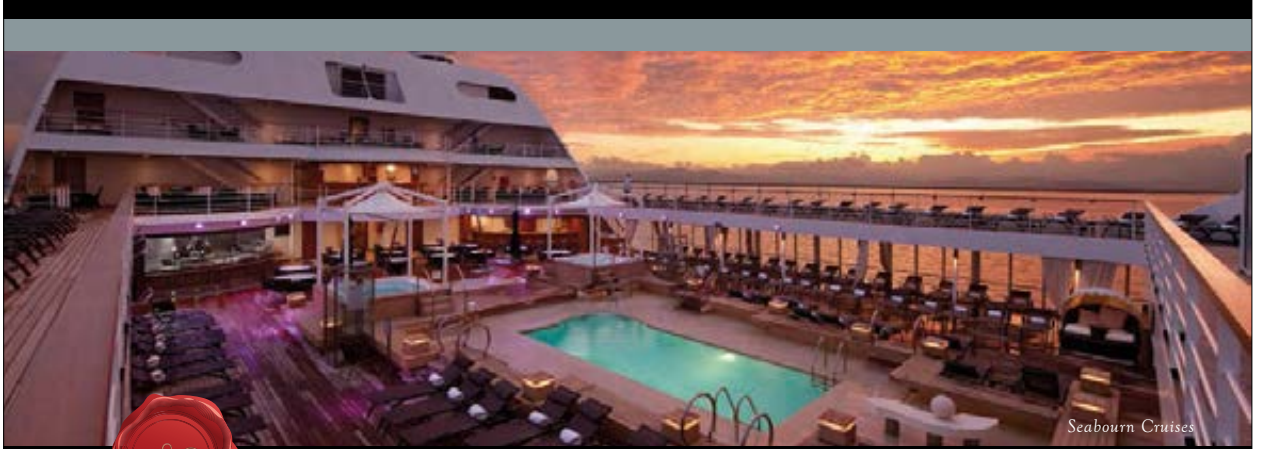
GUARANTEED PRICING

PRE-K-12 • COLLEGE PREPARATORY • INTENTIONALLY CHRISTIAN



Preparing for the Performance of Life.

PRIVATE TOURS OFFERED DAILY • WWW.LIPSCOMBACADEMY.ORG • 615.966.1600



*Personally crafted vacations
for discerning travelers*

Nashville is home to Privileged Journeys, your inside connection to the world of luxury travel. Our inspired, well-traveled advisors will orchestrate a personally crafted vacation in harmony with your desires ensuring your valuable down time is carefree and well spent.

Contact us today and let our connections help you make yours.

TRAVELINK
Luxury Division



TRAVEL

404 BNA Drive • Suite 650 • Nashville, Tennessee 37217
888-920-4977 • privilegedjourneys.com



- Ranked in Travel Weekly's Power List 2012, 2013, 2014, 2015
- Ranked in Nashville Business Journal's Fastest Growing Companies

ICONIC ENTERTAINMENT STUDIOS

present

the DANIEL CHILEWICH, TODD GERSHWIN and MICHAEL COHL

production of

A NIGHT WITH janis joplin

Presented in association with The Estate of Janis Joplin and Jeffrey Jampol for JAM, Inc.

Starring

MARY BRIDGET DAVIES

CICILY DANIELS TAWNY DOLLEY KELLY McINTYRE Q. SMITH JENNIFER LEIGH WARREN

Costume Designer

AMY CLARK

Sound Designer

BEN SELKE

Projection Designer

DARREL MALONEY

Musical Director

MARK BERMAN

Wig/Hair Designer

LEAH LOUKAS

Production Stage Manager

HETHYR (RED) VERHOEF

Associate Director

TYLER RHODES

Musical Coordinator

HOWARD JOINES

Production Manager

PETER WILL

General Manager

JUMPSTART
ENTERTAINMENT

Casting

LAURA STANCZYK
CASTING, CSA

Choreographed by

PATRICIA WILCOX

Written and Directed by

RANDY JOHNSON

CAST

Janis Joplin	MARY BRIDGET DAVIES
Janis Joplin (<i>at certain performances</i>)	KELLY MCINTYRE
The Joplinaires	
featured as Chantel, Odetta, Bessie Smith.....	CICILY DANIELS
featured as Etta James, Chantel.....	TAWNY DOLLEY
featured as Blues Woman, Aretha Franklin, Nina Simone	Q. SMITH
featured as Chantel, Blues Singer	JENNIFER LEIGH WARREN

UNDERSTUDIES

Understudies never substitute for players unless a specific announcement for the appearance is made at the time of the performance.

There will be one 20-minute intermission.



The use of any recording device, either audio or video, and the taking of photographs, either with or without flash, is strictly prohibited. Please turn off all electronic devices such as cellular phones, beepers and watches.

MUSICAL NUMBERS

ACT ONE

<i>Combination of the Two</i>	Joplinaires and the Band
<i>Tell Mama</i>	Janis Joplin, Etta James and the Joplinaires
<i>My Baby</i>	Janis Joplin and the Band
<i>Maybe</i>	The Chantels
<i>Summertime</i>	Blues Woman
<i>Summertime</i>	Janis Joplin
<i>Turtle Blues</i>	Janis Joplin
<i>Down On Me</i>	Odetta
<i>Down On Me</i>	Janis Joplin
<i>Piece of My Heart</i>	Janis Joplin and the Joplinaires
<i>Today I Sing the Blues</i>	Blues Singer
<i>Nobody Knows You When You're Down and Out</i>	Bessie Smith
<i>Spirit in the Dark</i>	Aretha Franklin, Janis Joplin and the Joplinaires

ACT TWO

<i>Entre Act/Raise Your Hand</i>	Band
<i>Try (Just a Little Bit Harder)</i>	Janis Joplin and the Band
<i>Maybe</i>	Janis Joplin and the Band
<i>Little Girl Blue</i>	Nina Simone and Janis Joplin
<i>Cry Baby</i>	Janis Joplin
<i>Kozmic Blues/I Shall Be Released</i>	Blues Singer, Nina Simone, Bessie Smith and Etta James
<i>Me and Bobby McGee</i>	Janis Joplin
<i>I'm Gonna Rock My Way to Heaven</i>	Janis Joplin and the Band
<i>Ball and Chain</i>	Janis Joplin
<i>Kozmic Blues</i>	Janis Joplin
<i>Stay With Me</i>	Janis Joplin and the Joplinaires
<i>I'm Gonna Rock My Way to Heaven</i>	Janis Joplin, Joplinaires and the Band
<i>Mercedes Benz</i>	Janis Joplin

ORCHESTRA

Musical Director – MARK BERMAN
Guitar 1 – ADAM KORNREICH
Guitar 2 – JAKOB REINHARDT
Bass – AIDEN MOORE
Drums – DANNY YOUNG
Saxophone – NEIL JOHNSON
Trumpet – MATT OWENS
Trombone – KARL LYDEN

Music Supervisor – MICHAEL J. MORITZ Jr.
Music Contractor – HOWARD JOINES

Q&A WITH NFL LEGEND EDDIE GEORGE, TPAC'S ARTS EDUCATION ADVOCATE

*"So, I would say to kids, 'Don't think outside the box. Eliminate the box.'
And then you will learn to be comfortable in the uncomfortable and
you will find your authentic voice."*

- Eddie George



Eddie George with students and teachers visiting TPAC from Dudley Head Start, photo by Mimosa Arts

The nonprofit Tennessee Performing Arts Center (TPAC) announced in December that NFL legend, former Tennessee Titan, actor, and entrepreneur Eddie George will serve as an advocate for TPAC Education.

Millions know George as a record-setting superstar who distinguished himself at The Ohio State University, where he won the Heisman Trophy, for the Tennessee Titans, and within the National Football League. Nashville audiences also know his work as an actor including Amun Ra Theatre's *God's Trombones*, the title roles in *Julius Caesar* and *Othello* for Nashville Shakespeare Theatre, and Nashville Repertory Theatre's *The Whipping Man*. He recently completed a seven-week run as "Billy Flynn" in the Broadway musical *Chicago*.

George received TPAC's highest honor, The Applause Award, in 2014 for his distinguished contributions to the arts and the community. The following summer, he joined the TPAC Board of Directors. In this Q&A, George talks about his commitment to increasing awareness of the need for arts education and its positive impact on educational achievement and well-being.

Q: Why are you tackling this new role for TPAC Education?

Eddie George: I saw this as a great opportunity to share my story. The arts have been a huge part of my life. I grew up going to plays with my mother. She put me in ballet lessons. I was very reluctant in doing so, but I took ballet again in college to help with my athleticism on the field. And now after playing the game, I've found a new career and peace in doing theatre. I really want to inspire children to delve into the arts because there is so much to explore about yourself, what you can become, what you can do, and how you can express your artistic talents.

Q: What messages do you want to relay to parents and children, along with educators and arts supporters?

EG: The arts are about aligning yourself with what you want to do and your passions. They are about not being afraid and fighting through the fear or doubt over what people may say. For me, going into theatre was a no brainer. It was a great challenge, and I've enjoyed really getting to know who I am. It was a spiritual journey for me, and it still is. To be able to tell the truth in imaginary settings through various writings and different characters resonated with me. I think kids should be able to explore that, and to not be afraid of it. We often see that kids shy away from theatre or public speaking.

I want young people to see all things are possible. I was inspired by the story of Paul Robeson and how he was able to transform his life from an athlete, learning how to read and write at a late age, to become a great orator, an opera singer, and a civil rights activist. It wasn't one thing that he was. I'm not that either. I'm not going to pin myself down as an actor or as a football player or as an entrepreneur. I can do all things. I bring that same amount of integrity, passion, and focus into everything that I do, whether it's reading a book to children, or reading a play, or giving a presentation to potential clients for my business. So, I would say to kids, 'Don't think outside the box. Eliminate the box.' Then, they will learn to be comfortable in the uncomfortable and they will find their authentic voice.

Q: How do you hope to inspire children through the arts?

EG: Hopefully, I can inspire them to pursue their dreams. Every time I get on the stage I come alive. It's a funny thing. Hopefully, I can inspire kids to become whatever they want to be. The great thing about being an actor is that you have a chance to experience almost every occupation, whether it's a lawyer, a general, a servant, or a president. Whatever that may be, you have a chance to experience that on stage, and that may inspire you to become our next president, or an athlete. That's the beauty of being an actor. You can be anything you want to be.



Eddie George with students visiting TPAC from Forks River Elementary in Smith County, photo by Mimosa Arts



Students visiting TPAC from Dudley Head Start in Nashville, photo by Mimosa Arts

“Eddie is an extraordinary role model, a unique individual who’s at the top of his game in whatever he does as an athlete, an actor, an entrepreneur, or humanitarian. We couldn’t be more thrilled about his deep interest in how TPAC Education engages and inspires young people. Talented in his own right and a born mentor, Eddie is an excellent messenger for how someone can expand and enrich their life through participation with the arts.”

- Kathleen O'Brien, President and Chief Executive Officer, Tennessee Performing Arts Center

ABOUT JANIS JOPLIN

That voice – high, husky, earthy, explosive – remains among the most distinctive and galvanizing in pop history. But Janis Joplin didn't merely possess a great instrument; she threw herself into every syllable, testifying from the very core of her being. She claimed the blues, soul, gospel and rock with unquestionable authority and verve, fearlessly inhabiting psychedelic guitar jams, back-porch roots and everything in between. Her volcanic performances left audiences stunned and speechless, while her sexual magnetism, world-wise demeanour and flamboyant style shattered every stereotype about female artists – and essentially invented the “rock mama” paradigm.

Born in Port Arthur, Texas, on January 19, 1943, Joplin fell under the sway of Lead Belly, Bessie Smith and Big Mama Thornton in her teens, and the authenticity of these voices strongly influenced Janis' decision to become a singer. A self-described “misfit” in high school, she suffered virtual ostracism, but dabbled in folk music with her friends and painted. She briefly attended college in Beaumont and Austin but was more drawn to blues legends and beat poetry than her studies; soon she dropped out and, in 1963, headed for San Francisco, eventually finding herself in the notoriously drug-fuelled Haight Ashbury neighbourhood.

She returned to Texas to escape the excesses of the Haight, enrolling as a sociology student at Lamar University, adopting a beehive hairdo and living a generally “straight” life despite occasional forays to perform in Austin. But California drew her back into its glittering embrace in 1966, when Janis joined the Haight-based



PHOTO: JOAN MARCUS

Mary Bridget Davies in *A Night With Janis Joplin*

psychedelic-rock band Big Brother and the Holding Company. Her adoption of a wild sartorial style – with frizzed-out hair, bangles, and extravagant attire that winked, hippie-style, at the burlesque era – further spiked her burgeoning reputation.

The band's increasingly high-profile shows earned them a devoted fan base and serious industry attention; they signed with Columbia Records and released their major-label debut in 1967. Of course, it was Joplin's seismic presence that caused all the commotion, as evidenced by her shattering performance in June of that year at the Monterey Pop Festival, which was captured for posterity by filmmaker D.A. Pennebaker; in the film, fellow pop star Mama Cass Elliot can be seen mouthing the word, "Wow," as Joplin tears her way through "Ball And Chain".

Big Brother's "Piece of My Heart", on 1968's *Cheap Thrills* LP, shot to the #1 spot. The album sold a million copies in a month and Joplin became a sensation – earning rapturous praise from *Time* and *Vogue*, appearing on *The Dick Cavett Show* and capturing the imagination of audiences that had never experienced such fiery intensity in a female rock singer. Her departure from Big Brother and emergence as a solo star were inevitable; she put together her own outfit, the Kozmic Blues Band, and in 1969 released *I Got Dem Ol' Kozmic Blues Again Mama!*, which immediately went gold. That year also saw her give a historic performance at Woodstock.

Joplin assembled a new backup group, the Full Tilt Boogie Band, in 1970; she also joined the Grateful Dead, the Band and other artists for the Festival Express railroad tour through Canada. Her musical evolution followed the earthier, rootsier direction of the new decade, as reflected in her final studio album, the landmark *Pearl*. Embracing material such as Kris Kristofferson's gorgeous ballad "Me and Bobby McGee" and her own a cappella plaint "Mercedes Benz", the disc showcased Joplin's mastery of virtually all pop genres. The latter song was, along with a phone message birthday greeting for John Lennon, the last thing she recorded; she died in October of 1970, and *Pearl* was released posthumously the following year. The quadruple platinum set became the top-selling release of Joplin's career and, in 2003, was ranked #122 on *Rolling Stone's* "500 Greatest Albums of All Time."

In the years since, Janis Joplin's recordings and filmed performances have cemented her status as an icon, inspiring countless imitators and musical devotees. Myriad hit collections, live anthologies and other releases have kept her legend alive, as have shows such as the hit *Love, Janis* – which Joplin's sister, Laura, helped create – and 2009's Edinburgh Festival Fringe "Best Solo Performance" nominee *Janis*. A documentary film, produced by Alex Gibney and Jeff Jampol and directed by Oscar nominee Amy Berg, is currently in production. In 1988, the Janis Joplin Memorial, featuring a bronze sculpture by artist Douglas Clark, was unveiled in Port Arthur.

Joplin was inducted into the Rock and Roll Hall of Fame in 1995 and posthumously given a Grammy Lifetime Achievement Award in 2005. But such honours only made official what rock fans already knew: that she was among the greatest, most powerful singers the form had ever known – and that she'd opened the door for countless artists across the musical spectrum.

Learn more at www.janisjoplin.com.

WHO'S WHO IN THE CAST



MARY BRIDGET DAVIES

(Janis Joplin) 2014 Tony Award nominee Mary Bridget Davies' journey began in her hometown of Cleveland, Ohio, when she started singing in local bands and she hasn't slowed down since.

She starred in *Anything Goes* and *It Ain't Nothin' But the Blues*. Upon gaining acclaim as Janis Joplin in *Love, Janis* she was asked to front Big Brother and the Holding Company. Mary Bridget is a 2014 Drama Desk Circle winner, Cleveland Critics' Circle Award winner, B. Iden Payne Award winner, 2014 Theatre World Award winner. A two-year regional run sent *A Night with Janis Joplin* to Broadway where Mary received her Tony nomination for Best Performance by an Actress in a Lead Role in a Musical.



KELLY MCINTYRE

(Janis Joplin *Swing*) Kelly is excited to be joining *A Night With Janis Joplin*! Recent performance credits: NYMF, Goodspeed Opera House, Hersheypark. Recent composing credits: NYMF, NYTB, 54 Below,

Joe's Pub. Proud graduate of The Hartt School of Music! Love to my amazing friends, family, MD&S. www.kellymcintyre.com.



JENNIFER LEIGH WARREN

(Joplinaire, Chantel, Blues Singer) Off/On Broadway (original casts): *Little Shop of Horrors*, *Big River* (song written for her by Roger Miller), *Marie Christine*. Regional: Sir Peter Hall's *Shakespeare Rep*,

Songs of Shirley Bassey, *Lonesome Traveler*, *Education of Randy Newman*. TV: *Pretty Little Liars*, *Lipstick Jungle*, *ER*, *Scrubs*, *All My Children*. Performed with Trombone Shorty, Broken Bells, The Kills, OK GO, Moon Taxi, Lisa Loeb on *The Tonight Show*, Jimmy Kimmel and CONAN. Denmark: Al Jarreau. Film: *Valentine's Day*. Awards: NAACP, Ovation, Dartmouth College. www.JenniferLeighWarren.com.



Q. SMITH

(Joplinaire, Blues Woman, Aretha Franklin, Nina Simone) Q. Smith- Broadway Credits - Mrs. Andrew in *Mary Poppins* (also the tour as Bird Woman/Mrs. Andrew) and *Les Miserables*. Off Bway/

Tours: *Fame: The Musical* (Mabel Washington-Cast Album), *Smokey Joe's Cafe* starring Gladys Knight, *Showboat* in concert at Carnegie Hall, *Abyssinia: A Gospel Celebration* with Wynton Marsalis (Lincoln Center), Guest Soloist with Omaha Symphony's Requiem, President Obama's Inauguration Ceremonies, and at Hillary Clinton's Vital Voices Awards (Kennedy Center). BFA: Ithaca College. Thanks to my Lord, my awesome parents, Dunkin', the Janis team.



TAWNY DOLLEY

(Joplinaire, Etta James, Chantel) Tawny has entertained audiences around the globe, sharing the stagewith artists John Legend, Estelle, Solange, Rachel Platten & legendary band, Vintage Trouble. She's performed

BGV's on *The Ellen Show*, *The Late Late Show*, *Wendy Williams*, *The Talk*, *The Late Show & The Tonight Show*. She also tours with the band Vaud & The Villians. Theatrical Credits: *Dreamgirls*, *Once On This Island*, *Smokey Joes Cafe*, *Parade*, *Both*, *Fame*, *Big River*, *For The Record: Tarantino*. Tawny's incredibly grateful for this Janis experience.



CICILY DANIELS

(Joplinaire, Chantel, Odetta, Bessie Smith) Cicily Daniels hails from Potomac, Maryland. Her credits include Broadway: *Disney's The Little Mermaid* (Ursula u/s, Alana), *All Shook Up* (Sylvia u/s, Ensemble),

Rent (Seasons of Love Soloist), National Tour: *The Gershwin's Porgy & Bess* (Mariah u/s, Ensemble), *Caroline or Change* (Washing Machine); TV & Film: *Mozart in the Jungle*, *Boardwalk Empire*, *Ugly Betty*; Education: Yale University, B.A. Theater Studies. Cicily voice can be heard on national commercials, including spots for Cinnamon Toast Crunch. She thanks her husband, family, and agents for their continual support.

RANDY JOHNSON

(Writer and Director). Randy Johnson is the writer and director of the 2014 Tony Award nominated production of *A Night With Janis Joplin*. He is a graduate of the USC School of Dramatic Arts in Los Angeles. "He certainly doesn't lack for ambition or vision, or social conscience. In the strictest sense of the word, he isn't a theatre director - that might be too much of a constricted space for him, although he's certainly succeeded in almost every medium including Broadway, Off-Broadway, regional theatre and the concert world. If there is a trademark for Randy Johnson's productions, it's that they're going to be nothing that you might expect." (*Washington Post*). His next production is *Shout, Sister Shout*, a new musical chronicling the untold story of gospel, swing and rock and Roll legend Sister Rosetta Tharpe. Randy is a member of the Stage Directors and Choreographers Society and the Dramatist Guild. For more information please visit: www.randy-johnson1.com

PATRICIA WILCOX

(Choreographer) Broadway: *A Night With Janis Joplin* and *Motown The Musical* (Astaire Award for Best Choreography). London West End: *Motown The Musical*. Off-Broadway/National Tours: *Little Shop Of Horrors* (Encores, starring Jake Gyllenhaal), *Children's Letters To God*, *Bowfire* (and PBS Television Special), *Blues In The Night* (NAACP Image Award nomination), and *Seussical*. Selected Regional: The Kennedy Center, Seattle Repertory Theatre, The Old Globe, Pioneer Theatre, Arizona Theatre Company,

Continued on page 39

It's a new day. Time to be bold.

The 2016 C300.



When it comes to design and performance, the new Mercedes-Benz C300 is exceptionally bold. And like you, it thrives on the challenges and changes of an ever-changing world. So go ahead—be bold. Reach past your own boundaries and discover new possibilities in the new 2016 C300.

2016 C300 Shown with optional equipment. See dealer for details. ©2015 Authorized Mercedes-Benz Dealers. For more information, call 1-800-FOR-MERCEDES, or visit MBUSA.com.

Mercedes-Benz
of Nashville



630 Bakers Bridge Avenue Franklin, TN 37067 | 800 - 784 - 0289



Community Banking
SINCE 1906

FB
FirstBank
www.FirstBankOnline.com

FDIC

Perhaps you've just finished your undergraduate degree or are already established in your job, and you are just not happy with where you are in your career. Give us a chance to help you find your next. With the second-largest graduate enrollment of any private university in Nashville, Lipscomb students experience graduate studies that come with more than just a piece of paper.

At Lipscomb, we'll first work with you one-on-one to help you select the right degree to make a difference in your life and in your future. You might even be surprised to learn that your undergraduate degree can open many new opportunities for a master's in areas you never thought possible...but dream of.

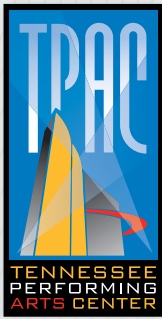


Courses are relevant to the job market and taught by a faculty who not only care about you getting your name on a diploma, but making a name for yourself with it. And as many students tell us, our unique mixture of academics, faith and ethical perspectives, and community partnerships do more for their leadership skills than they ever thought possible.

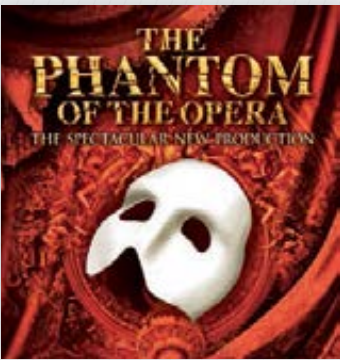
Find what you need to make a difference in your next step. Contact us at 615.966.6287 or graduatestudies@lipscomb.edu. Let's talk about your plans, ideas and dreams. It's what we do best, to ensure you get to your best. **gradstudies.lipscomb.edu**

SOMETIMES WHERE YOU WANT TO GO IS WHERE YOU DIDN'T THINK YOU COULD.

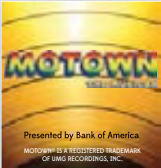




UPCOMING SHOWS INCLUDE:



March 9-20



February 16-21



April 13



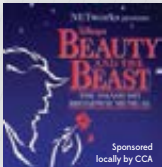
April 15-16



April 26 – May 1



May 10-15



May 31 – June 5



June 7-12



June 15

TPAC.ORG
615-782-4040
TPAC Box Office at 505 Deaderick Street



Pictured: Ensworth presents the high school debut of "Ring of Fire"

In Search of Truth

Ensworth is a kindergarten through twelfth grade, coeducational independent school. The School promotes academic excellence and inspires students to be intellectually curious, to **use their talents to the fullest**, to be people of integrity, and to be contributors to society.

EXPLORE **ensworth.com**



BLAKEFORD
AT GREEN HILLS
—B—

BLAKEFORD
AT HOME
—B—

LiveWell
BY BLAKEFORD
—B—

THE PREMIER PROVIDER OF SENIOR LIVING
OPTIONS IN THE GREATER NASHVILLE REGION

Call 615-665-9505 to schedule your private tour,
or visit **Blakeford.com** for more information



11 Burton Hills Boulevard, Nashville, TN 37215





WE HIT EVERY NOTE

At Metova we build mobile and web solutions for any sized company. From Fortune 500 companies to start-ups, we deliver top of the line technology and go beyond expectations so you can accomplish your goals.

WE HOPE YOU ENJOY THE SHOW

WWW.METOVA.COM

The city's
hottest spots,
all under
one roof.



Discover a variety of culinary delights and escape to one of the only full-service spas downtown. Connected to the Country Music Hall of Fame and Museum and adjacent to the Music City Center. We're ready for you Nashville — like nothing you've ever experienced before.



Inspiring
creative
discoveries
in art
and life



2015-16 Production of Shakespeare's A Midsummer Night's Dream

MAKE IT MEMORABLE. MAKE IT GRAND.

Upgrade to elegance with Grand Avenue. Whether you are headed to opening night or date night, our professionals will meet your travel needs and exceed your expectations.

Have confidence in Grand Avenue's trained chauffeurs as you arrive in style in a one-of-a-kind vintage roadster, an understated sedan or a limousine.



GRAND AVENUE™

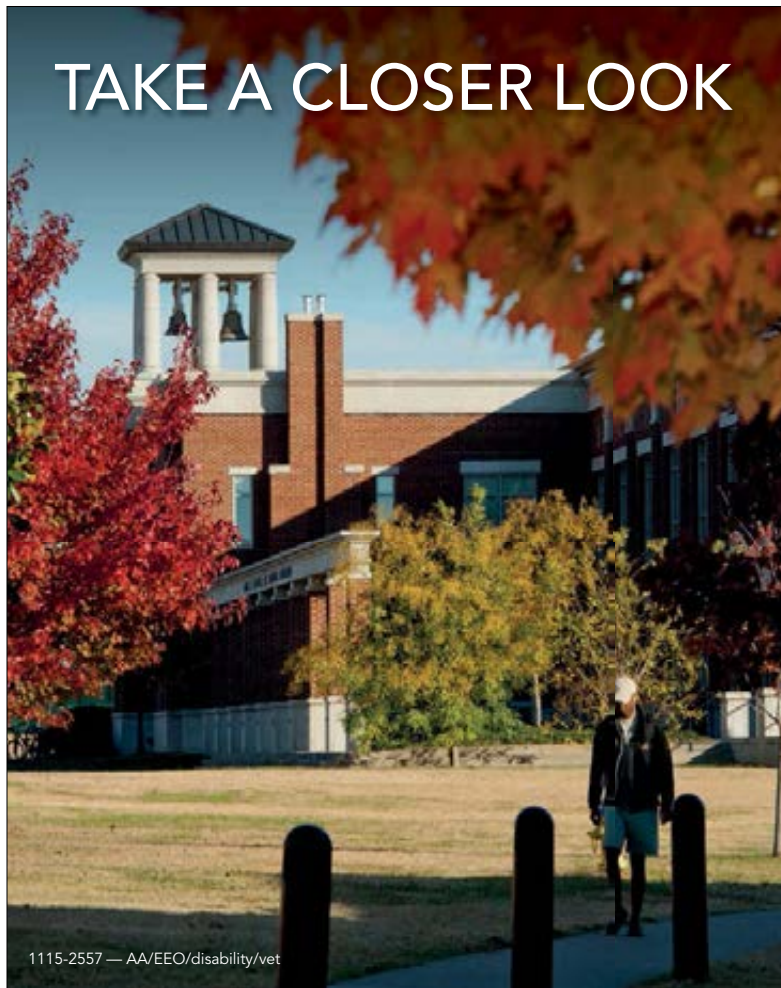
BE DRIVEN

Call us today at 615.714.5466 or toll-free at 866.455.2823
or visit GrandAvenueWorldwide.com



GRAND 26683 | PAM | 7/15

TAKE A CLOSER LOOK



1115-2557 — AA/EEO/disability/vet

MTSU HONORS COLLEGE

An Ivy League Experience

Tennessee's first public Honors College fosters the academic excellence and nurturing environment of a small, select, liberal arts college within the setting of a major university. Our students have won Goldwater Scholarships, traveled abroad on Fulbright Scholarships, and earned spots on the *USA Today* All-American Academic Team. Take a closer look.

**MIDDLE
TENNESSEE**
STATE UNIVERSITY

www.mtsu.edu/apply

TEXAS de BRAZIL[®]

CHURRASCARIA

Brazilian Steakhouse

Carving a New Experience



16 flame-grilled meats
served tableside

50-item gourmet salad area

Ultimate caipirinhas,
award-winning wines,
and much more

\$10 OFF

Nashville

210 25th Ave. N. Suite 110

615.320.0013

Serving Dinner Nightly

*Must mention ad to server. Valid up to 8 people per table/reservation. Not valid on restaurant holidays, with other offers or Fridays or Saturdays. Expires 6/30/16.

Receive deals at TexasdeBrazil.com

AWARD
WINNING
VIDEO
PRODUCTION



g+ ★★★★★
REVIEWS

GET YOUR **SHOOT** TOGETHER.

At KellyGirl Video, we only
shoot corporate video.

Our unique approach results
in a strategic, effective product
that gives you the very best
value for your budget.

kellygirl
VIDEO
CORPORATE VIDEO PRODUCTION

"Kelly absolutely captured the essence of the business proposition and effectively conveyed the value add of doing business with CapStar."

- Claire Tucker, President & CEO, CapStar Bank

STUDIO NOW OPEN
IN THE MARATHON BUILDING

615.414.9690
www.kellygirlvideo.com



EMPOWERING YOUR SUCCESS

Solutions to Power Your Business

We help modern professionals become more successful with managing paper & digital information, maintaining vital information systems & empowering businesses with leading printing technologies.



Workflow Solutions

Boost productivity with digitized data, automated workflows & instant access to information while maintaining security & compliance.



Document Management

Organize, store & manage documents & data with document management solutions.



Office Equipment

Produce superior documents & facilitate secure & efficient digital workflows with industry-leading multifunctional printing devices.



Managed Print Services

Gain visibility & control costs of desktop printers. MPS includes everything but the paper, for one flat fee.

**Additional Solutions: Wide Format Printing
Production Printing • 3D Printing**

For technology that powers your business, call your local RJ Young representative at 800.347.1955 or visit us online at RJYoung.com.



It ain't
over 'til the
HOT lady
sings!

STRAUSS
die fledermaus
APRIL 2016 • TPAC
A madcap romcom with a
gorgeous waltz of a soundtrack!

Tickets from \$19!
nashvilleopera.org
615.832.5242

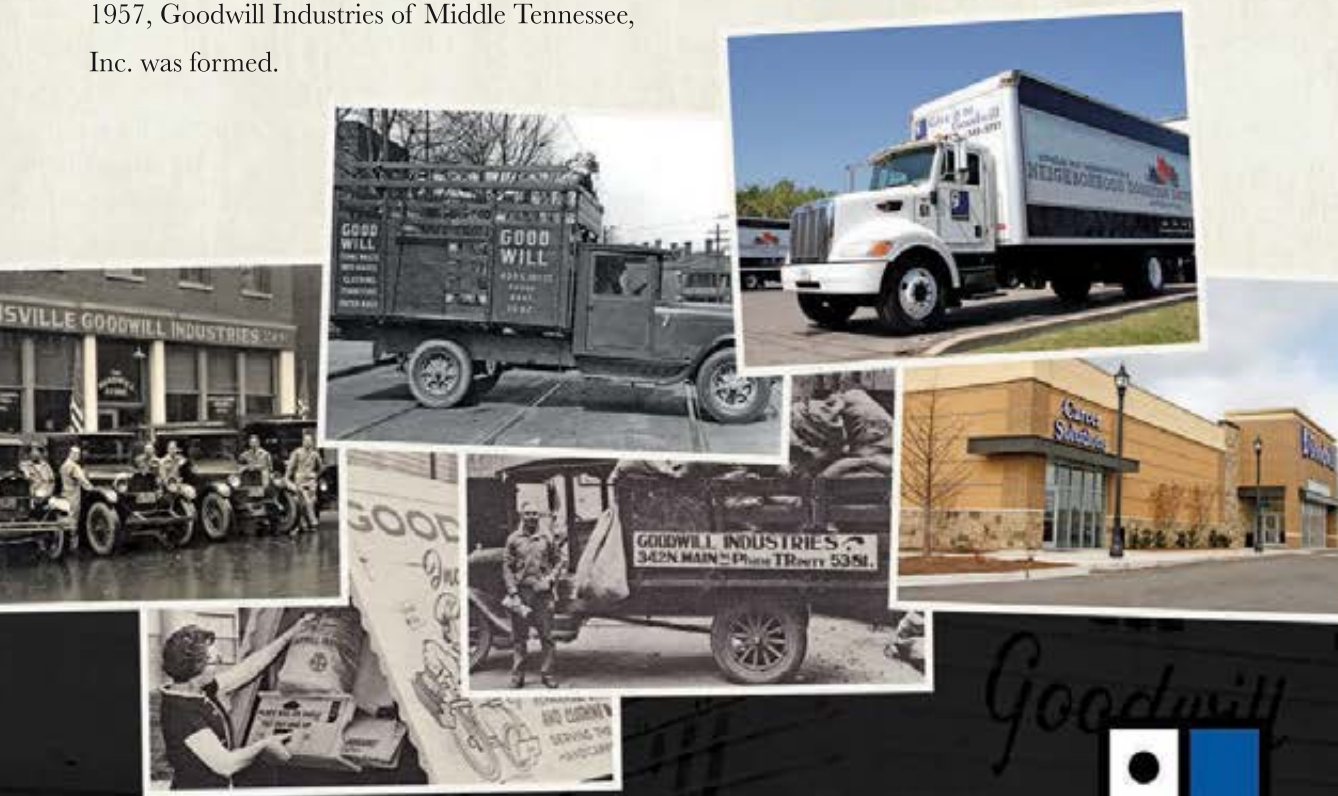
**NASHVILLE
OPERA**

As one of the very first social enterprises, Goodwill has been helping people, communities and the environment since 1902.

Goodwill took root in 1902 when a minister recognized a need and helped people in his community find meaningful work opportunities. The Rev. Edgar J. Helms worked as a missionary in the slums of Boston. He would gather burlap sacks and visit the wealthier residents in his community, asking for items they no longer needed or wanted. After collecting the donations, the Rev. Helms took the items to his church where people, in need of work, repaired what was broken and then sold the used goods. The workers found success through their own efforts, and with work they gained the dignity that comes with earning a paycheck. The Goodwill movement swept the country and, in 1957, Goodwill Industries of Middle Tennessee, Inc. was formed.

The Social Enterprise Model at Goodwill

Our operation model is unique because it doesn't start with an "ask." It starts with a local service that addresses a need — where to donate used goods and where to find affordable used goods — and then transforms the value of these transactions into verifiable social impact for local communities, individuals and the environment. The revenue generated from the sale of used goods enables Goodwill Industries of Middle Tennessee to assist tens of thousands of people each year with training and job placement services at its 29 Goodwill Career Solutions Centers.



See the impact your donations are making
View our annual report while you wait for the show to begin:
giveit2goodwill.org/annualreport





No one cares for your business quite like family.

-  Audit, Tax and Advisory
-  Staffing Solutions
-  Technology Solutions
-  Employment Partners
-  Investment Advisors
-  Information Security
-  Physician Business Solutions
-  Business Process Solutions

LBMC elevates businesses to new heights. We provide a full spectrum of professional services using real-world expertise. We leverage our vast resources to save you time, energy and expense.

The LBMC Family of Companies are comprised of more than 450 experts dedicated in their fields.

Learn the many ways we can enhance your business at lbmc.com.



Nashville 615.377.4600 | Knoxville 865.691.9000 | Chattanooga 423.756.6585

Applications Accepted Year-Round
PREKINDERGARTEN THROUGH GRADE 8



Christ the King
SCHOOL

615.292.9465

www.cksraders.org

A ministry of



*"There's something
special about this place."*

UNDERSTANDING YOU

There's something to be said for developing a relationship with a bank whose people live and work in your community. We get to know you. We understand your individual needs. Whether it's a checking account, a home improvement loan, a mortgage, or a small business loan, we provide solutions that are right for you.



Understanding You.

West End | Green Hills | Goodlettsville
Hendersonville | Hermitage | Cool Springs
615.340.3000 | renasantbank.com



All loans subject to credit approval.



SEE HOW THE MUSIC MOVES YOU.

Belmont's School of Music provides training and mentorship to aspiring musicians from across the country so that they can use their gifts to engage and transform the world. See the next class of rising stars at one of many performances this spring. Visit belmont.edu/music or call 615.460.6408 for tickets or more information.



1.27.16	<i>Jazz Piano Concert Series with Sullivan Fortner</i>
2.1.16	<i>Commercial Music Showcase</i>
2.23.16	<i>World Music Concert Series with The Fretless</i>
3.21.16	<i>Classical Performers</i>
3.28 – 4.2.16	<i>Belmont Jazz Festival</i>
4.1 – 4.10.16	<i>The Addams Family</i>
4.16.16	<i>The President's Concert</i>





We zipline.
We volunteer.
We hang glide.
We mentor.
We hot air balloon.
We cultivate.
We innovate.
We celebrate life.

We care for others.

"You are never too old to set another goal or to dream a new dream." – C.S. Lewis

That's FiftyForward!

Whether you are seeking adventure, purpose or peace of mind, FiftyForward is there for you. We treasure your gifts, talents and expertise. We recognize your challenges. Let us support you with our nearly 60 years of experience.

We are the only nonprofit that offers such a wide range of resources and activities for adults 50 and older. From our seven lifelong learning community centers in Davidson and Williamson counties for active adults to our comprehensive services to support independence for those needing assistance ...
Learn what the buzz is all about!



Contact us!
(615) 743-3400 or www.fiftyforward.org

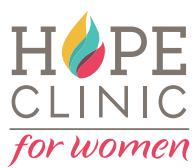


#FiftyForwardFirst #CareTeam #CardCrusaders
#ChampionOthers #TheLarryKeetonTheatre



Our goal at Hope Clinic is to provide quality care while shining hope into seemingly hopeless situations. Join us at one of our 2016 events! 100% of the proceeds benefits the mission of Hope Clinic.

- Hope for the Future Gala Mar 8
- Smoke on the Water May 1
- Yoga Brew at Jackalope Aug 27
- Golf Tournament Sept 12
- Women of Hope Sept 22
- Cider Carols Dec 1



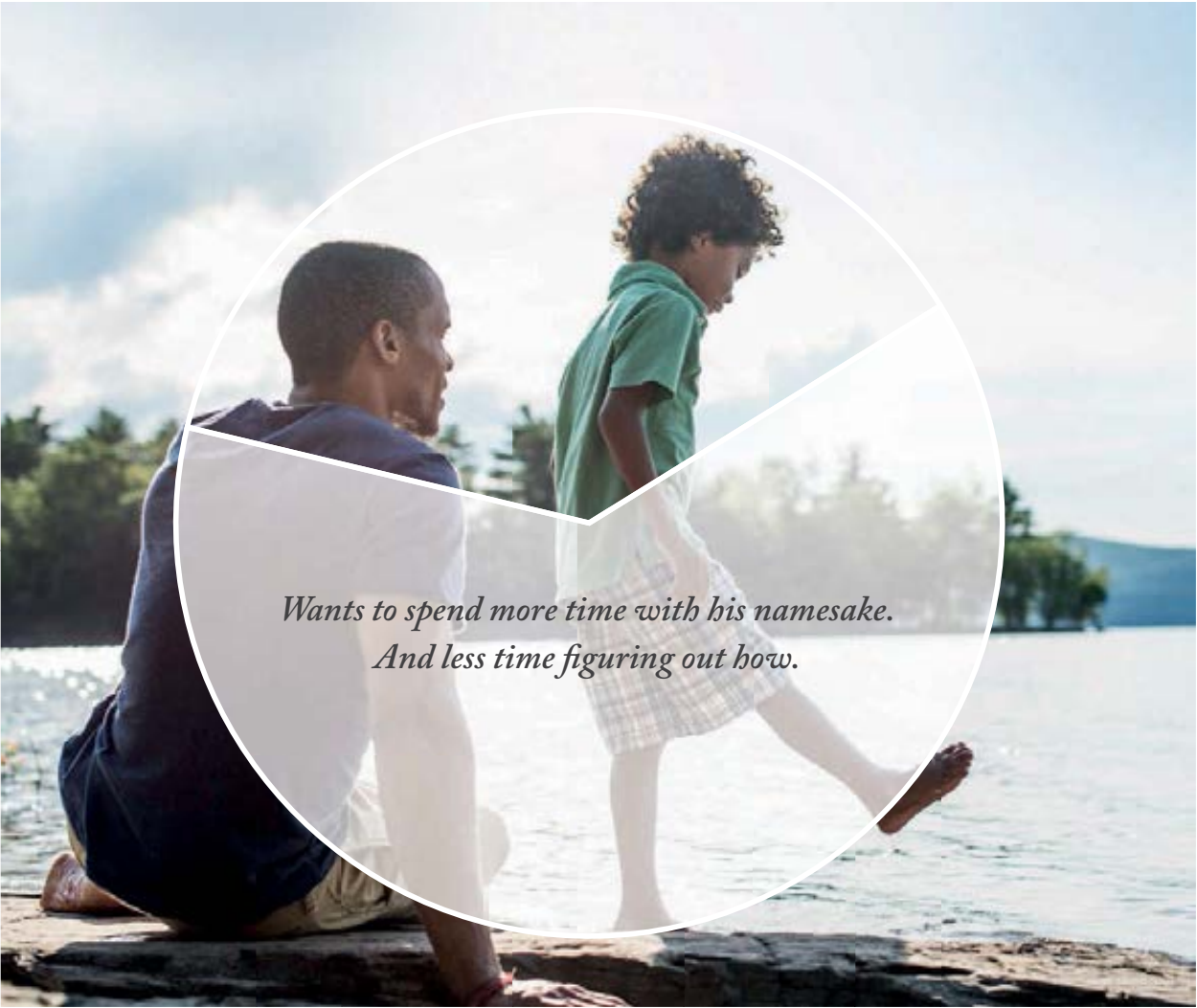
1810 Hayes Street, Nashville TN 37203
HopeClinicForWomen.org | 615.321.0005



Take hold of your child's future.

Exemplary Academics • Family and Faith Based
Diverse Student Body • 1:1 Technology in the classroom with Google Chromebooks
www.ezellharding.com

Jason Tucker Photography



*Wants to spend more time with his namesake.
And less time figuring out how.*

GET THE SERVICES OF A PROVEN TEAM FOR YOUR INDIVIDUAL FINANCIAL GOALS.

FTB Advisors offers a more personal approach to wealth management than you'll find on a computer or smartphone. We offer individualized strategies in investments, financial planning, trust and insurance services with your particular goals in mind. Discover what a team of dedicated financial advisors can do for you now. And into the future.

START A CONVERSATION AT FTBAdvisors.com

511 UNION STREET
SUITE 400
NASHVILLE, TN 37219

2214 ELLISTON PL
SUITE 304
NASHVILLE, TN 37203

501 CORPORATE CENTRE
SUITE 150
FRANKLIN, TN 37067



Insurance Products, Investments & Annuities: Not A Deposit | Not Guaranteed By The Bank Or Its Affiliates | Not FDIC Insured | Not Insured By Any Federal Government Agency | May Go Down In Value Insurance Products and Annuities: May be purchased from any agent or company, and the customer's choice will not affect current or future credit decisions.

FTB Advisors is the trade name for wealth management products and services provided by First Tennessee Bank National Association ("FTB") and its affiliates. Financial planning and trust services provided by FTB. Investment management services, investments and annuities available through FTB Advisors Insurance Services, Inc. ("FTBIS"), a subsidiary of FTB. Arkansas License # 416584. Insurance products available through FTB Advisors Insurance Services, Inc. ("FTBIS"), a subsidiary of FTB. Arkansas License # 247414. In some states, insurance products and annuities are provided by First Horizon Insurance Services, Inc. ("FHIS"), a Tennessee corporation, and a subsidiary of FTB. The principal place of business of FHIS is 165 Madison Ave., Memphis, TN 38103. California License # OD12174. FTBIS, FTB Advisors, Inc., and FHIS may transact insurance business or offer annuities only in states where they are licensed or where they are exempted or excluded from state insurance licensing requirements. FTB Advisors does not offer tax or legal advice. You should consult your personal tax and/or legal advisor concerning your individual situation.

©2016 First Tennessee Bank National Association. www.firsttennessee.com

EXECUTIVE PROTECTION DOGS



UN-FAIR ADVANTAGE

Protecting Your Greatest Assets.

P. 888.580.9893
www.NashvilleK9.com

Nashville
K9[®]
When Seconds Count...

MOVIES AT THE SCHERMERHORN



JUNE 12



JUNE 17



JUNE 24

NOW PLAYING
★ Nashville.com[®]

Visit NowPlayingNashville.com for Middle Tennessee's most comprehensive event guide.

THEATER ★ MUSIC ★ DANCE
FAMILY FUN ★ MORE

DISCOUNT TICKETS and EXCLUSIVE GIVEAWAYS
are a click and tap away!



An initiative of The Community Foundation of Middle Tennessee



Nashville
Symphony

615.687.6400
NashvilleSymphony.org

Always something* new to see.

*something includes, but not limited to, art, film, music and exotic autos.



2016 exhibitions include works by Goya, Rubens and Renoir; Italian automobiles; Soviet photography and film; iconic pottery, textiles and jewelry; Samurai arms and armor; and much more.

Visit fristcenter.org/art to see a complete schedule of exhibitions. Consider becoming a Frist Center member and enjoy unlimited visits for a year.

THE FRIST
CENTER FOR THE VISUAL ARTS

919 BROADWAY | DOWNTOWN NASHVILLE

1970 Lancia Stratos HF Zero. Collection of XJ Wang. Image © 2015 Peter Harholdt



GAYLORD
SPRINGS®
GOLF LINKS

TEE UP YOUR NEXT EVENT.

Social Events • Weddings • Golf Outings • Complimentary Parking
Corporate Events Retreats & Team Building • GaylordSprings.com



Faith *and* Science

Can a cancer diagnosis make you take a leap of faith?

At age 38, Caroline—wife, mother and nurse—was diagnosed with Stage IV ovarian cancer. But instead of letting it take control of her life, she saw it as a second chance to truly live.

She entrusted us with her life 17 years ago and has been jumping (sometimes from 13,000 feet) at every opportunity since.

Nothing *shall be* **impossible.**

To schedule a screening, call 615-284-CARE or visit STHealth.com/cancer.



Saint Thomas
Cancer Care

WHO'S WHO IN THE CAST

Missouri Repertory Theatre, Paper Mill Playhouse. Patricia has staged original works for the Houston Symphony, Minnesota Pops, Phoenix Symphony, Lyrics and Lyricists and has also choreographed for ice skating gold medallists Viktor Petrenko, Ilia Kulik, Katya Gordeeva, Miki Ando and ice dancing teams for the 2006, 2010 and 2014 Olympic Winter Games.

TYLER RHODES (*Associate Director*) Broadway: *A Night With Janis Joplin* (Associate Director). 1st National Tours: *Guys & Dolls* (AD), *Little House on the Prairie – The Musical* (Melissa Gilbert) and Garry Marshall's *Happy Days – The Musical*. NYC: 92 Street Y – Mike Stoller's *80th Birthday Celebration* (AD & Co-Writer) hosted by Paul Shaffer, *Empire, Idaho!* and *Giant* readings. Paper Mill Playhouse: 12 productions including *Hairspray*, *Seven Brides...*, *Pirates!* and *Godspell*. Goodspeed: *The Fabulous Lipitones* and *Happy Days*. Zach Theater: *Caroline, or Change*, *Urinetown* and *Hair*. Pasadena Playhouse, San Jose Repertory, Signature Theater, NC Theater. Other: Austin Critic's Table & B. Iden Payne Awards. Education: Texas State University.

JONATHAN WARREN (*Dance Supervisor*) Broadway/ National Tours: *Wicked* (Dance Captain) and *The Sound of Music* (Associate Choreographer). Other New York: Tori Scott: *Thirsty!* (Joe's Pub at The Public Theater) and *Dance Out Loud* (Pace University). International: *Wicked* (Mexico City). Regional: La Caze Aux Folles (Goodspeed Opera House), *A Night with Janis Joplin* (The 5th Avenue Theatre) and *The Daughter of the Regiment* (Opera New England). Performing: *Wicked*, *Peter Pan* starring Cathy Rigby, *We Will Rock You* (Paris, Las Vegas), *West Side Story*, *Cats*, *Radio City Christmas Spectacular*, *Hot Mikado*, *Ragtime* and *Will Rogers Follies*. Film: *Outside Providence*.

BEN SELKE (*Sound Designer*) Ben Selke has been involved in theatre productions in the U.K. and around the world. After growing up in the north east of England, he now calls New York his home. Sound design credits include: *A Night with Janis Joplin* (Pasadena Playhouse); *Lets Kill Grandma this Christmas* (Off-Broadway); *All Her Faces* (Off-Broadway); *Rock of Ages* (Norwegian Cruise Line); *Daniel Tiger's Neighborhood Live!* (U.S. Tour). Ben would like to thank his amazing wife for all her support and his two children, Charlotte and Joshua, for making every day an adventure.

AMY CLARK (*Costume Designer*) Bway: *A Night With Janis Joplin*, *Chaplin* (Drama Desk and Outer Critic's Circle Nominations). Off-Bway: *Heathers the Musical*, *Cagney*, *Unlock'd*, *Animals out of Paper*, *All That Intimacy*, *Jayson With A Y*, *Dreams of The Washer King*, *Apple Cove*, *Dramatis Personae*. Other selected designs: *Vocalosity*, Ringling Bros. Barnum and Bailey Circus presents *Circus Extreme '15* and *Legend's '14*, *On Your Toes* City Center Encores. Regionally: The Goodman Theater, The Alley Theater, The Alliance Theater, Hartford Stage Co., The Asolo Repertory Theater, The Paper Mill

Playhouse, The Pittsburgh Public Theatre, Bay Street Theater, Goodspeed Musicals, The MUNY, The Actors Theater of Louisville, Hartford Theaterworks, Barrington Stage Co., Portland Stage Co. Awarded the 2012 Theatre Hall of Fame Emerging Artists fellowship. MFA from NYU. Amyclarkdesign.com

DARREL MALONEY (*Video & Projection Design*) Darrel has designed for broadcast, concerts, film and theatre. Broadway: *American Idiot*, *On Your Feet*, *Allegiance*, *A Night with Janis Joplin*, *Everyday Rapture*, *The Illusionists*. Off-Broadway: *Found*, (Drama Desk nomination), *Checkers* (Drama Desk nomination), *Kung Fu*, *Golden Child*, *The Village Bike*, *The Submission*, *Bikeman*, Karen O's *Stop the Virgins*. Regional: Arena Stage, A.R.T., La Jolla Playhouse, The Old Globe, Berkeley Rep, CTG, Minnesota Opera. Other designs include Ringling Bros. Barnum and Bailey Circus 144th Edition, *Surf the Musical* (Las Vegas). www.darrelmaloney.com

LEAH LOUKAS (*Wig/Hair Designer*) Broadway: *The Heidi Chronicles*, *On The Town*, *A Night with Janis Joplin*, *Vanya and Sonia and Masha and Spike*, *American Idiot*, *Irena's Vow*. Off-Broadway: *Barbecue*, *Fortress of Solitude* (The Public Theater), *Love's Labour's Lost*, *Into the Woods* (Shakespeare in the Park series), *Heathers: The Musical*, *Bare: The Musical*, *Carrie: The Musical*, *Tribes*, *Our Lady of Kibeho* (Signature Theatre). Various productions at Papermill Playhouse including *Ever After* and *The Little Mermaid*; Ken Ludwig's *Baskerville* (Arena Stage and McCarter Theater); *The Second Mrs. Wilson* (Longwharf Theater and George St. Playhouse). Leah has also worked at theatres including: MTC, Dallas Theater Center, Delaware Theater Company and McCarter Theatre. She has a BFA in Theatre Design and Production with a focus in makeup and wig design from the University of Cincinnati.

MARK BERMAN (*Musical Director*) Mark Berman officially entered the pop culture pantheon for his piano playing on the world famous theme to HBO's *Sex And The City*. He has played and recorded with the proverbial who's who of jazz, pop and rock – Aretha Franklin, Carole King, Leslie Gore, Phoebe Snow, Hugh Jackman, Gladys Knight, Elvis Costello, Buddy Miles, Phil Ramone and the list goes on. NPR's *Studio 360* show, created and hosted by Kurt Andersen, spotlighted his piano improvisations. Berman has been a powerful presence on Broadway, where he has conducted orchestras for *Rent*, *Smokey Joe's Cafe* and *Blood Brothers*, and played lead piano/keyboards on *The Life*; *The Boy from Oz*; *Hairspray*; *42nd Street*; *Dreamgirls*; *Bullets Over Broadway*; *Jesus Christ Superstar*; *Hair* and *Spider-Man*. Look for Mark's *The Genesis Project*. www.markbermanmusic.com

HOWARD JOINES (*Music Coordinator*) Broadway: *Allegiance*; *Aladdin*; *Matilda*; *Side Show*; *Bullets over Broadway*, *A Night With Janis Joplin*; *Cinderella*; *Scandalous*; *Chaplin*; *Ghost*; *How to Succeed in*

Business Without Really Trying; Promises, Promises; Bye-Bye Birdie; Grease; The Times They Are A-Changin'; Dirty Rotten Scoundrels; Radio City Music Hall Spring and Christmas Spectaculars. In addition to hiring the finest musicians in the world, Howard continues to perform as Conductor, Percussionist and Drummer in the recording studio, live and on Broadway, including productions of *Matilda, Ghost, Billy Elliot, Dirty Rotten Scoundrels, Never Gonna Dance, Flower Drum Song, Full Monty, Jesus Christ Superstar, Miss Saigon, Les Misérables, Singing in the Rain, The King and I* and *Cleavage*. For Robin and Taylor.

HETHYR (RED) VERHOEF (*Production Stage Manager*) Having toured with *One Night With Janis Joplin* regionally, Hethyr is thrilled to be back on the road with it. Hethyr has worked as stage manager and flyman over the years and continues to be deeply invested in theatre, art and all the elements it takes to create it. Besos for my babu Isara Naya. Proud Member of the Actors' Equity Association.

CASKEY HUNSADER (*Assistant Stage Manager*) Caskey Hunsader is excited to be hitting the road again with this amazing show. NYC: *Radio City Christmas Spectacular, New York Spring Spectacular (Radio City), Broadway Bares XXI, Growing Up 70s, Whatever Man, Rescue Rue*, among others. Tours: *A Chorus Line, Tap Dogs, Wizard Of Oz, Love Janis, TheatreworksUSA, Legally Blonde, Grease, Come Fly Away, Alton Brown Live*. Regional: *Peepshow (Vegas), Love Janis (San Francisco), Charlie & the Chocolate Factory (First Stage)* and more. Proud member of Actors Equity. www.caskeyhunsader.com

LAURA STANCZYK CASTING (*CSA Casting*) Broadway, Off-Broadway & Tours: *Side Show, After Midnight, A Night With Janis Joplin, Follies, Don't Dress for Dinner, Lombardi, Ragtime, Impressionism, The Seafarer, Coram Boy, Translations, Radio Golf, Master Class, The Cripple of Inishmaan, Dirty Dancing, Broadway Three Generations, Tryst, Damn Yankees, Gate/Beckett, The Glorious Ones, Long Day's Journey Into Night*. Laura works with a host of regional and international theatres. Nominated for six Artios Awards for Excellence in Casting, won for *Follies*.

JUMPSTART ENTERTAINMENT (*General Manager*) Jumpstart Entertainment provides general management and executive producer services to clients in all aspects of live and filmed entertainment. Built by industry veterans Roy Gabay and Daniel Kuney, past credits include *Rock Of Ages, Honeymoon In Vegas, The 39 Steps, Heathers* and many more. Jumpstart productions have won 13 Tony Awards, 14 Drama Desk Awards and three Pulitzer Prizes. Upcoming: *Brooklynite* and *Monsoon Wedding*. letsjumpstart.com

WILLIAM MORRIS ENDEAVOR ENTERTAINMENT Booking agency WME is a leading global entertainment agency. Named one of *Fast Company's* Most Innovative Companies, WME represents artists and experts across books, digital media, film, food, music, television and theatre. In 2014, WME acquired IMG, a global leader in sports, events, media and fashion. Together, WME | IMG specializes in talent representation and management;

brand strategy, activation and licensing; media production, sales and distribution; and event management.

T & D PRODUCTIONS, LLC (*Producer*) T&D Productions is an integrated entertainment production and marketing company founded by industry veterans Todd Gershwin and Daniel Chlewick, who have collaborated on numerous musical, theatrical, and sports initiatives. Chlewick and Gershwin's extensive experience as Lead Producers includes the Broadway musical *A Night With Janis Joplin*, the upcoming Barry Manilow musical *Harmony*, the national tour of *'S Wonderful - The New Gershwin Musical; Over the Rainbow - The Music of Harold Arlen*; the critically acclaimed Gershwin multimedia symphonic concert, *Here To Stay*; the North American tours of *Rudolph the Red Nose Reindeer the Musical*; the national tour of the Tony Award-winning show *Blast*; the upcoming musical production *Through My Eyes*, based on gospel singing legends BeBe and CeCe Winans and more. They have also produced a number of recorded media projects including the Broadway cast album of *A Night With Janis Joplin* with famed music producer Russ Titelman and an all-star recording project with the late legendary music producer Phil Ramone featuring top recording artists performing Gershwin compositions. They have managed numerous projects for iconic brands such as George Gershwin, the Big East Conference, and others.

MICHAEL COHL (*Producer*) Michael Cohl's career spans more than 45 years in the entertainment business, producing worldwide music tours including The Rolling Stones, Pink Floyd, U2, Barbra Streisand and many more, as well as films such as *Pete Seeger: Power of Song* (Emmy Award), *LENNONYC* (Peabody and Emmy Awards), *Big Easy Express* (Grammy Award), a film about Harry Belafonte, *Sing Your Song* (NAACP Image Award), and The Rolling Stones classics *Live at the Max* and *Shine a Light*. Mr. Cohl has also produced live shows including the children's show *Yo Gabba Gabba! Live!* (2010 Billboard Touring Award for Creative Content) and has spent decades on and off-Broadway with shows including *SpiderMan: Turn Off The Dark* (for which Mr. Cohl was voted Producer of the Year 2011), *Rock of Ages, The Lion King* and *Spamalot* (Tony Award). Mr. Cohl, previously the chairman of Live Nation, was inducted into the Canadian Rock n Roll/Music Hall of Fame, and has received a star on Canada's Walk of Fame. Among his many other awards, Michael has also been honoured with the Billboard Legend of Live Award, the TJ Martell Foundation Man of the Year Award and a JUNO Award for Special Achievement. Michael is the founder and chairman of Iconic Entertainment Studios and is currently developing, producing and promoting more than a dozen properties including *An Evening with Oprah, David Gilmour, Transformers Live!, An Evening with Al Pacino, A Night with Janis Joplin, Alvin and the Chipmunks Live on Stage!*, and many more.

ICONIC ENTERTAINMENT STUDIOS (*Tour Producer*) Iconic Entertainment Studios is a diversified live entertainment company that specializes in the production and promotion of live arena spectacles, global concert tours, theatrical performances and touring exhibitions.

Created by legendary live events producer Michael Cohl, the company's current productions include: *An Evening with Oprah*, *Barbra Streisand*, *David Gilmour*, *Spider-Man: Turn Off the Dark*, *The Marvel Experience*, *Rock of Ages*, *An Evening with Al Pacino*, *The Pink Floyd Experience*, *Jurassic World: The Exhibition*, *A Night with Janis Joplin*, *Rudolph The Red Nosed Reindeer*, *Alvin and The Chipmunks* and many more. Credited with developing the concept of package touring in 1989, Cohl has more than 40 years of high-level expertise in the entertainment industry with clients such as The Rolling Stones, U2 and Pink Floyd. He was inducted into the Canadian Music Hall of Fame, when he received a Walt Grealis Special Achievement Award at the 2002 Juno Awards. Cohl is also a recipient of the 2004 Billboard Legend of Live award and was inducted into Canada's Walk of Fame in 2005. He and his shows have won more than 35 entertainment industry awards including a Tony, five Olivier Awards and multiple Emmys. For additional information, visit: www.s2bnentertainment.com

STAFF FOR A NIGHT WITH JANIS JOPLIN

GENERAL MANAGEMENT

JUMPSTART ENTERTAINMENT

Roy Gabay, Daniel Kuney, Jeffrey Feola, Brandon Powell

COMPANY MANAGER

Kevin Beebe

PRODUCTION MANAGER

Peter Will

CASTING

LAURA STANCZYK CASTING

Production Stage Manager	HETHYR (RED) VERHOEF
Stage Manager	CASKEY HUNSADER
Assistant General Manager	JEFFREY FEOLA
Associate Casting	CALEB CAUDILL
Head Electrician	MATT REID
Assistant Electrician	CORY GRAY
Associate Costume Designer	JUSTIN HALL
Assistant Carpenter	CHRIS RICALLIS
Assistant Audio	JOE UCHISON
Dance Supervisor	JONATHAN WARREN
Rigger/Backline	JIM MACHOWSKI
Projection Programmer	MICHAEL HESMOND
Head Wardrobe	BRENDA ANDERSON
Assistant Wardrobe	AMANDA NOMURA
Head of Hair	MANZENA PUKSTO

CREDITS

Audio Services by SPECIALIZED AUDIO-VISUAL Inc.

Additional clothing donated by MALYN JOPLIN

Visit www.MadeForPearl.com for more information

Scenery supplied by Atomic Scenery Studio and Tail Towers

Special thanks to Bra*Tenders for hosiery and undergarments

SPECIAL THANKS

The Estate of Janis Joplin and Jeffrey Jampol for JAM, Inc.

FOR ICONIC ENTERTAINMENT STUDIOS

Chairman	MICHAEL COHL
President	STEPHEN SHAW
COO	JOHN HARPER
Head of Production	GLENN ORSHER
Marketing Manager	JOSH BLACKBURN
Vice President Finance	STEVE RATH
Senior Accountant	ANDREI POLETAEV
Director, Legal Affairs	CARRIE GERSTEIN
Tour Promoter Representative	JONATHAN UDA
Office of the Chairman	CAT PEOPLES
Office of the President	LAURA BARRY

MUSIC CREDITS

Ball and Chain written by Willie Mae Thornton. Published by Bro 'n Sis Music, Inc. (ASCAP) c/o Carlin America, Inc. Used with permission. *Today I Sing the Blues* written by Curtis Reginald Lewis. Published by Bess Music (ASCAP). Used with permission. *Combination of the Two* written by Sam Andrew. Published by Cheap Thrills Music (ASCAP). Used with permission. *I Shall Be Released* written by Bob Dylan. Published by Dwarf Music (ASCAP). Used with permission. *Tell Mama* by Clarence George Carter, Marcus Lewis Daniel and Wilbur Terrell. Published by EMI-Screen Gems Music (BMI). Used with permission. *Maybe* by Richard Barrett. Published by EMI Longitude Music (BMI). Used with permission. *Me and Bobby McGee* written by Fred L Foster and Kris Kristofferson. Published by Combine Music Corp (BMI) administered by EMI Music Publishers. Used with permission. *Little Girl Blue* music by Richard Rogers, lyrics by Lorenz Hart. This section is used by special arrangement with Rodgers & Hammerstein: an Imagen Company www.rnh.com. All rights reserved. *Kozmic Blues* written by Janis Joplin and Gabriel Mekler. Published by Strong Arm Music (ASCAP) and Universal Music Publishers (ASCAP). Used with permission. All rights reserved. *Turtle Blues* written by Janis Joplin. Published by Strong Arm Music (ASCAP). Used with permission. All rights reserved. *Down on Me* written by Janis Joplin. Published by Strong Arm Music (ASCAP) Used with permission. All Rights Reserved. *Mercedes Benz* written by Janis Joplin, Michael McClure, and Robert Neuwirth. Published by Strong Arm Music (ASCAP). Used with permission. All rights reserved. *Summertime* from *Porgy and Bess*, words and music by George Gershwin, DuBose, Dorothy Heyward, and Ira Gershwin. Copyright 1935 (renewed), Nokawi Music (ASCAP)/George Gershwin Music (ASCAP)/Ira Gershwin Music (ASCAP)/DuBose and Dorothy Heyward Memorial Fund (ASCAP). Nokawi Music Administered in the US by Imagen Music, LLC. George Gershwin Music, Ra Gershwin Music and DuBose and Dorothy Heyward Memorial Fund. Used with permission. *I'm Going to Rock My Way to Heaven* written by Jerry Ragovoy and Jenny Dean. Published by the Tune Room (ASCAP). Used with permission. *Nobody Knows You When You're Down and Out* by James Cox. Published by Universal Music Publishers (ASCAP). Used with permission. *Raise Your Hand* written by Stephen Lee Cropper, Eddie Floyd, and Alvertis Isbell. Published by Cotillion Music Inc. (BMI) and Irving Music (BMI). Used with permission. *Just Try a Little Bit Harder* written by Jerry Ragovoy and Chip Taylor. Published by Unichappell Inc. (BMI) Used with permission. *Stay With Me* written by Jerry Ragovoy, and George David Weiss. Published by Chappell & Co (ASCAP). Used with permission. *A Woman Left Lonely* written by Spooner Oldham and Dan Penn Music (BMI). *Cry Baby* written by Jerry Ragovoy (aka Norman Meade) and Bert Berns. Published by Sloop II Inc. (ASCAP). EMI Music Publishers (ASCAP) and Sony/ATV Music Publishers (ASCAP). Used with permission. *Piece of My Heart* written by Bert Berns and Jeey Ragovoy, published by Sloop II Inc. (ASCAP), Sony/ATV Music Publishers (ASCAP) and Warner/Chappell Music Publishers (ASCAP). *Spirit in the Dark* by Aretha Franklin. Published by Springtime Music (ASCAP) Used with permission. Original Music Direction and Arrangements by Len Rhodes.

KEEP ROCKIN' AT TPAC AND

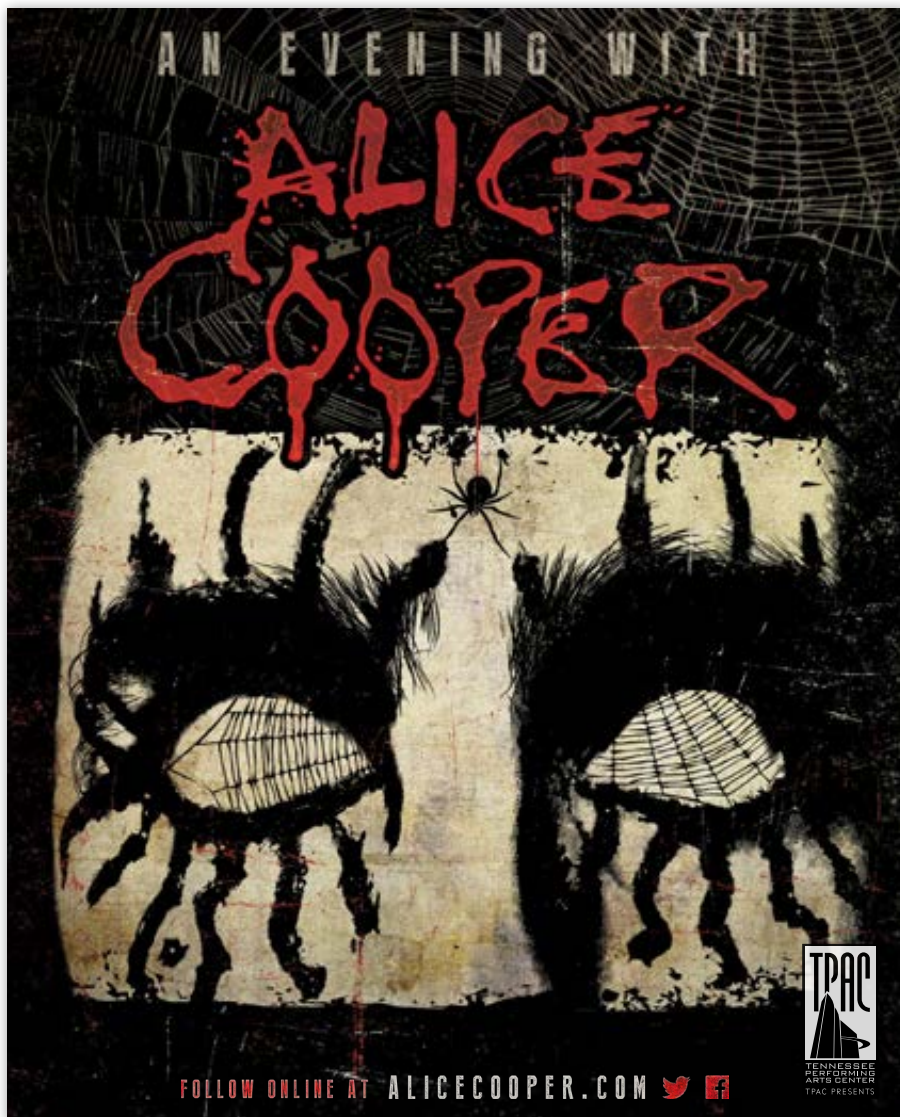
Alice Cooper, the legendary performer who pioneered a grandly theatrical brand of hard rock designed to shock, brings his signature sound and style to Nashville with a performance at TPAC's Andrew Jackson Hall on May 2, 2016.

There is little Cooper hasn't achieved in his remarkable career filled with platinum albums, sold-out tours, and several awards. As the architect of shock rock, he drew equally from horror movies, vaudeville, and garage rock to create stage shows featuring electric chairs, guillotines, fake blood, and boa constrictors.

Cooper, who rattled the cages and undermined the authority of generations of guardians of the status quo, continues to surprise fans both old and new with his own brand of rock psycho-drama, enjoying it as much as the audience.

AN EVENING WITH ALICE COOPER ROCKS TPAC

MAY 2, 2016 • 8:00 P.M.



ON SALE NOW

TPAC.ORG/SHOWS | 615-782-4040

TPAC Box Office

TPAC.ORG is the official online source for buying tickets to TPAC events.

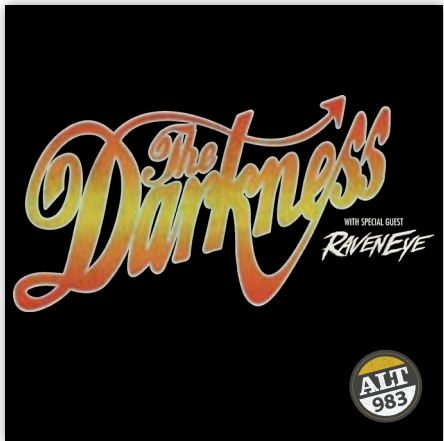
WAR MEMORIAL AUDITORIUM

Across the street from TPAC, the stage is set for great concerts at War Memorial Auditorium, the beautiful historic venue known for its amazing acoustics. Tickets for these shows and more are on sale now!

WMAROCKS.COM | 615-782-4030

FREE PARKING from 6:00 p.m. to 1:00 a.m.
in the State lots behind the Supreme Court Building

WMARocks.com is the official online source for buying tickets to War Memorial Auditorium events.



THE DARKNESS

WITH SPECIAL GUEST RAVENEYE
APRIL 23 • 8:00 P.M.

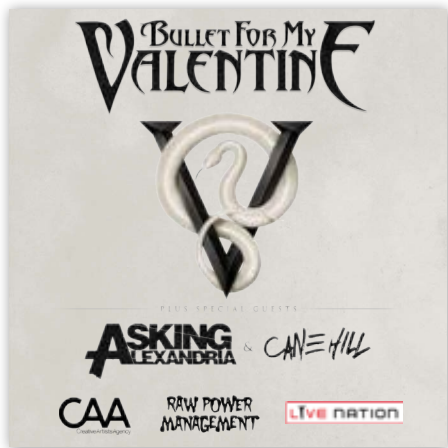
The Darkness is proud to return once again to America. We are here to confirm our reputation as the mightiest live band treading the boards in this saccharine age of music made by computers, millionaires and halfwits. Sometimes by all three! If music and good times are in your soul, come see us perform live.



BRING ME THE HORIZON

WITH SPECIAL GUESTS '68 AND SILVER SNAKES
MAY 4 • 7:00 P.M.

One of the fastest growing rock bands on the planet, Bring Me The Horizon is a gateway drug for a new rock generation. *That's The Spirit* finds Bring Me The Horizon shaping up to be the sort of band that won't just conquer the world (again), but will change it, too. Where do you go next, when you're on top of the world? For Bring Me The Horizon, the answer is simple: wherever they please...



BULLET FOR MY VALENTINE

WITH SPECIAL GUESTS ASKING ALEXANDRIA
AND CANE HILL
MAY 25 • 8:00 P.M.

Bullet For My Valentine bare their teeth like never before on the aptly-titled *Venom* (RCA Records). The UK metal powerhouse didn't hold anything back or pull any punches. When it came time to strike on their fifth full-length record, they rallied around one unified goal. The group has firmly etched their place within the modern metal pantheon.

EXPERIENCE THE RETURN OF THE SMASH HIT MAMMA MIA!

APRIL 26 - MAY 1

Mamma Mia! is the ultimate feel-good show that has audiences coming back again and again. Now it's your turn to have the time of your life at this smash hit musical that combines ABBA's greatest hits – including “Dancing Queen,” “S.O.S.,” “Super Trouper,” “Take A Chance on Me,” and “The Winner Takes It All” – with an enchanting tale of love, laughter and friendship.

“This musical comedy is quite clever in its script and the way ABBA's biggest hits are woven into the story,” said Kathleen O'Brien, TPAC's president and chief executive officer. “It's so much fun to revisit the unforgettable music of ABBA that crosses generations. They have everyone on their feet by the end of the show.”

A celebration of mothers and daughters, old friends and new family found, *Mamma Mia!* is one of the most successful musicals of all time, the eighth longest-running show in Broadway history. Whether it's your first visit or your fourteenth, experience the show that has the whole world coming to relive the thrill, because every time feels like the first time at *Mamma Mia!*

Tickets on sale now at TPAC.org, by phone at 615-782-4040, and at the TPAC Box Office, 505 Deaderick Street, in downtown Nashville.
For tickets for groups of 10 or more, please call 615-782-4060.

Presented by
GRANDCENTRAL
BARBER



Mamma Mia! North American Tour 2015 by Joan Marcus

Thirsty?

Be sure to visit our bars throughout the lobbies!



Bars are located in TPAC's Polk Theater lobby on the Orchestra level and Jackson Hall lobbies on the Orchestra and Tier levels. Be sure to visit the beautiful Bar Seven located on the Orchestra level the next time you are inside Jackson Hall.

Uniquely Nashville.

Find our city's best arts and entertainment bets, can't-miss events, artist interviews, society news and all things unique to Middle Tennessee **every Sunday inside Portfolio** and online at Tennessean.com.



THE TENNESSEAN
PART OF THE USA TODAY NETWORK

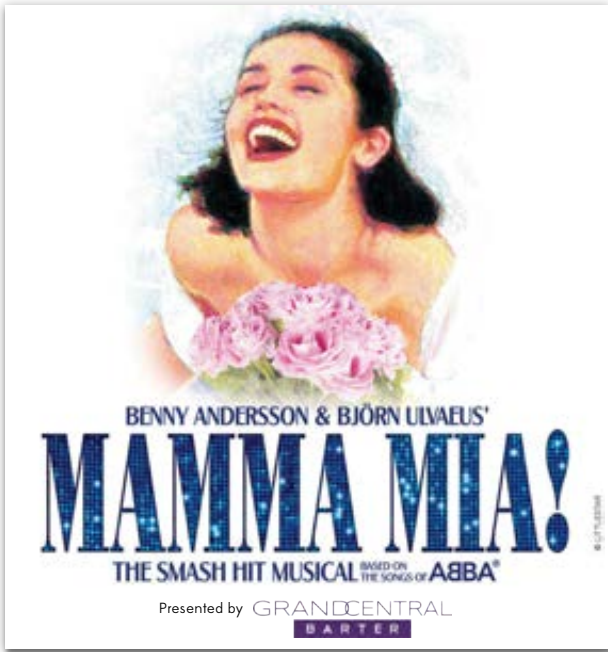
Subscribers: Tennessean.com/Register

Non-Subscribers: Tennessean.com/Subscribe

You can get great deals on Broadway, concerts, and more!

Does your employer, civic group,
or school offer TPAC discounts?
Contact us to find out.

**TPAC has four great programs
that help you save money:**



MAMMA MIA! returns to TPAC April 26 – May 1!

Bring a group of 10 or more to this ultimate feel-good show that has audiences coming back again and again. This smash hit musical combines ABBA's greatest hits with an enchanting tale of love, laughter, and friendship. See the show that has the whole world coming back for more!

**Group tickets start at just \$20.
Visit TPAC.ORG/GroupReservations or call
615-782-4060 to reserve your tickets today!**

Price varies by date and seat location.

THANK YOU

to A NIGHT WITH JANIS JOPLIN audience members
who participated in TPAC's Group Sales programs and purchased tickets by April 1, 2016.

Blue Cross Blue Shield of TN
BMI Music
Centennial Healthcare
Cracker Barrel
The Farmers Bank
HCA, Inc.

Nissan North America
Tennessee State Employees
Vanderbilt Medical Center
Vanderbilt University
Young Professionals
Chamber of Nashville

©2015 Porsche Cars North America, Inc. Porsche recommends seat belt usage and observance of all traffic laws at all times. Optional equipment shown is extra.



Porsche recommends **Mobil 1** and **MICHELIN**

Legendary Porsche performance with four passengers. We're definitely defying the laws of something.

The Panamera. Experience pure Porsche performance for four.

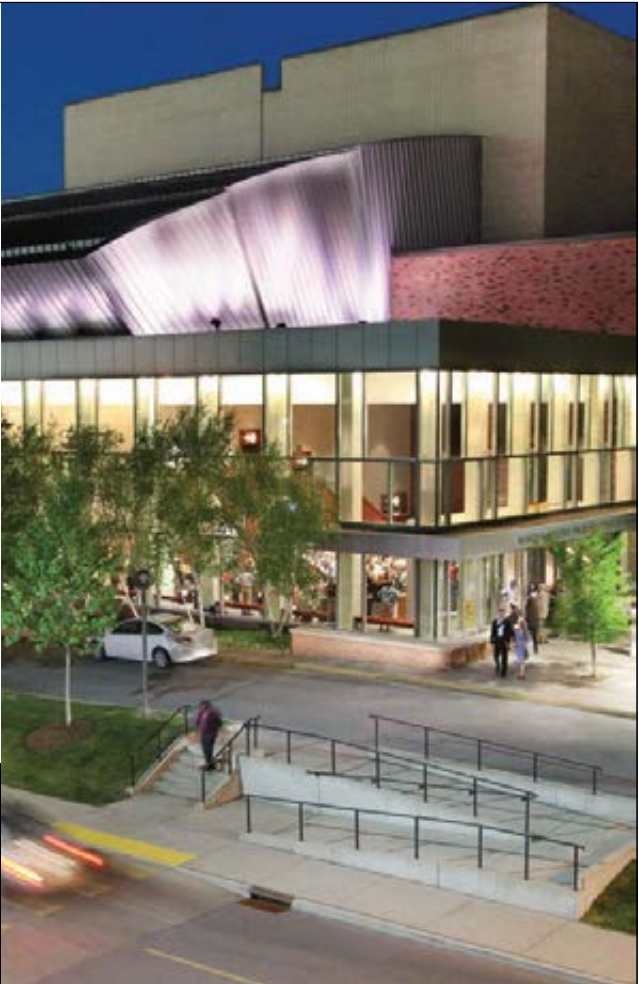
Porsche of Nashville
1580 Mallory Lane
Brentwood, TN 37027
(855) 409-2487
www.porscheofnashville.com



Blair Concert Series 2015-2016

The Blair School of Music
bringing artistry
to education

For information about our free faculty
and student performances,
guest artists, lectures, master
classes, and more,
visit the Blair website at
blair.vanderbilt.edu



VANDERBILT  Blair School of Music

2400 Blakemore Avenue • Nashville, TN 37212

Complimentary valet parking and
FREE self-parking for most events



We believe in second chances



DOING
THE MOST
GOOD™

Learn more about how
we fight poverty in
Middle Tennessee
by visiting
MoreThanAKettle.org



FRIENDSHIP, CONFIDENCE
AND ALL THAT JAZZ
— BECAUSE OF —
BALLET

NEW

**STUDIO
DIVISION**

AGES 8-18

ballet • jazz • hip hop
musical theater

*no previous dance
experience required*

**NASHVILLE
BALLET**

PAUL VASTERLING, Artistic Director

TO LEARN MORE VISIT

nashvilleballet.com/school

IN THE FUTURE YOU'LL HAVE AN
AMAZING WEBSITE



CALL US TODAY

BECAUSE TOMORROW
IS THE FUTURE
AND
WE PROBABLY NEED TO GET STARTED

615.370.1530

ICGLINK

www.ICGLINK.com

SOUND SOLUTIONS
For Better Hearing



**BRENTWOOD
HEARING CENTER**

5544 Franklin Pike, Suite 100
Nashville, Tennessee 37220
*(Just north of Brentwood at the
Old Hickory I-65 interchange)*

*Providing hearing
solutions that enable you
to hear EVERY sound....
from the downbeat
to the final encore!*

Audiologists:
Anne T. Boling, M.Ed. CCC-A
Tania Williams, Au.D.
Kimberly R. Mozingo, Au.D.

(615) 377-0420
brentwoodhearingcenter.com

**LANCASTER
CHRISTIAN
ACADEMY**



WE CELEBRATE THE ARTS

CALL NOW TO DISCUSS YOUR CHILD'S FUTURE 615-223-8151

DANCE PERFORMANCES
CHORUS
COFFEE HOUSE PERFORMANCES
FUN DRAMA COURSES
CAPTIVATING MUSICALS
DYNAMIC PLAYS
HUMAN LIFE VIDEOS
THRIVING ARTS PROGRAM
ELEMENTARY DRAMA CLASSES

AN OUTRAGEOUSLY FUN SCHOOL WHERE KIDS GROW IN THE LORD

CONTACT INFORMATION

Lancaster Christian Academy
1340 Jackson Hwy
Nashville, TN 37217
P 615 223 8151
F 615 223 8151

Early Learning Center
1911 Ramsey Circle
Germantown, TN 37732
P 615 223 8151
F 615 223 8151

**LANCASTER
CHRISTIAN
ACADEMY**





FlexMBA

- Finish in 12 months
- Newly revised and integrated curriculum
- Accelerated cohort opportunity
- Online or on-campus
- Career and professional development seminars
- Network with other business leaders
- Global opportunities—study abroad options

I AM *true* **BLUE**

JONES COLLEGE OF BUSINESS
www.mtsu.edu/mba • (615) 898-2964

AA/EEO/disability/vet

**MIDDLE
 TENNESSEE**
 STATE UNIVERSITY



1882




Old Natchez Country Club is a beautiful venue for many social occasions such as:

- * Wedding Receptions * Rehearsal Dinners
- * Bridesmaid Luncheons * Holiday Parties
- * Fundraising Gala's
- * Corporate and Charitable Golf Outings

Our central location in Williamson County along with the beauty of the setting and first class service make Old Natchez Country Club the ideal venue for your special event.

115 Gardengate Drive, Franklin, TN 37069
 615-373-3200 • www.oldnatchezcc.com

Andrew Jackson's
HERMITAGE
 HOME OF THE PEOPLE'S PRESIDENT

**ILLUMINATING THE PAST
 INSPIRING THE FUTURE**

VISIT ANDREW JACKSON: BORN FOR A STORM
*Bold, interactive exhibit explores Jackson's rise to power
 and his impact on the U.S.*

**Was He One of Our Greatest Presidents?
 You Decide!**



AGE OF JACKSON

4580 Rachel's Lane
 Nashville, Tennessee
 615-889-2941
www.thehermitage.com







HOPE
LIVES
HERE



NASHVILLE
RESCUE MISSION

For more information visit
nashvillerescuemission.org

Choose the **Experience & Stability** of Your Neighbor with **20 Years** Mortgage Experience

ALoanwithAlene.com
Your Lender for **LIFE**

Specializing in Residential
Doctor and Dentist
Mortgage Loans for Over 20 Years



Alene Gnyp
Mortgage Loan Specialist

615.582.2334 NMLS #659293

The
B·A·N·K
OF
NASHVILLE

We're here to get you there.

a division of **SYNOVUS BANK**
MEMBER FDIC



The Bank of Nashville is a division of Synovus Bank. Synovus Bank, Member FDIC, is chartered in the state of Georgia and operates under multiple trade names across the Southeast. Divisions of Synovus Bank are not separately FDIC-insured banks. The FDIC coverage extended to deposit customers is that of one insured bank.

MASTERING THE ART OF PRINT



OFFSET PRINTING • DIGITAL PRINTING • WIDE FORMAT PRINTING • BINDERY & FINISHING

1835 Air Lane Drive, Nashville, TN • www.lithographicsinc.com • 615-889-1200

 lithographics-inc

 @Lithographics

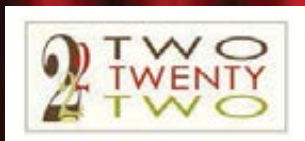
 lithographics-inc

 info@lithographicsinc.com

Encore Dining



1808 Grille Located in the Hutton Hotel, 1808 Grille's season menus blends traditional Southern dishes, with global flavors. Award-winning wine list, as well as full bar and bar menu. Whether you are looking for a fine dining experience or a place to be part of the scene, 1808 Grille is the perfect place to meet, dine, and linger. Forbes Four Star. Complimentary Self parking. 1808 W. End Avenue, Nashville, TN
Ph: (615) 340-0012 | 1808grille.com



Two Twenty-Two Grill

Our hot, made-from-scratch lunch is sure to satisfy your appetite. Ready-made options prepared daily, including wraps, sandwiches, salads, baked goods, and more. Located inside the Country Music Hall of Fame.
Ph: (615)291-6759 | 216 5th Ave. S. | Open daily 9 a.m.-5 p.m.



Bajo Sexto Taco

Under the direction of Oaxacan-born chef Kaelin Ulrich Trilling, the taqueria offers a limited menu of Mexican cuisine, including tacos and flautas; hand-made tortillas; wine on tap, beer, and margaritas. Located in the Country Music Hall of Fame.
Ph: (615)577-7717 | 216 5th Ave. S. | BajoSextoTaco.com | Open Daily ~ hours vary



Fleming's Prime Steakhouse & Wine Bar

Fleming's Nashville is an ongoing celebration of exceptional food & wine, featuring the finest prime steak and an award-winning wine list. We are located across from Centennial Park at 2525 West End Ave.
Ph: (615)342-0131 | www.flemingssteakhouse.com/locations/tn/nashville



Goozy Dessert Bar and Café

Nashville's first dessert bar, featuring molten chocolate cakes, housemade gelato, inventive desserts, artisan grilled cheeses, gourmet coffee, wine, craft beer and cocktails. Located in Green Hills across from Orvis and Noshville.
Ph: (615)297.0274 | Visit www.gotogoozy.com for hours and directions.



Rodizio Grill - The Brazilian Steakhouse

Enjoy the authentic flavors, style and warm alegria of a Brazilian Churascaria (Steakhouse). Rodizio Grill features unlimited appetizers, gourmet salads, side dishes and a continuous rotation of over a dozen different meats carved tableside by our Gauchos. Banquet seating and private dining available. Valet Parking.
Ph: (615)730-8358. 166 Second Ave. N. | Reservations Accepted | rodiziogrill.com/nashville



The Melting Pot - a Fondue Restaurant

Where fun is cooked up fondue style. Join us for Cheese and Chocolate fondue or the full 4-course experience. Casually elegant - Always Fun. Open 7 Days for dinner. Sundays after the Matinee. Valet Parking. Reservations Recommended.
Ph: (615)742-4970 | 166 Second Ave. N. | www.meltingpot.com/nashville



Ravello

Enjoy a dinner inspired by the Italian coastal town of Ravello. Begin with selections from our antipasti bar, sample housemade pasta—all in a lush garden setting. Located in Gaylord Opryland Resort. Complimentary parking available.
Ph: (615)458-6848 | GaylordOpryland.com/Dining



Jimmy Buffett's Margaritaville Nashville

On the corner of Fourth & Broadway, Margaritaville has everything... authentic southern food, the best bars & the caliber of music that's expected in Nashville.
Ph: (615)208-9080 | www.MargaritavilleNashville.com
Sales@MargaritavilleNashville.com



Texas de Brazil

Texas de Brazil steakhouse features a gourmet salad area containing more than 50 items, as well as continuous servings of deliciously seasoned beef, lamb, pork, chicken and sausage, all carved tableside. Group dining rates available. Valet parking.
Ph: (615)320-0013 | 210 25th Ave. N. Suite 110 | www.texasdebrazil.com



Trattoria Il Mulino

Trattoria Il Mulino, the acclaimed casual chic restaurant from iconic Il Mulino New York, debuts in Nashville. Enjoy traditional Italian cuisine featuring signature dishes, seafood, pasta, and a selection of 190 wines. BUON APPETITO!
Ph: (615)620-3700 | trattoriailmulinoonashville.com

Advertise in the “Performing Arts Magazines”

We have a captive
advertising audience
at every live
performance.



For Advertising Info.

Please call: 615-373-5557

www.GloverGroupEntertainment.com



15/16 SEASON
LIVE ON STAGE



SEPT. 17 - OCT. 4, 2015



DEC. 3 - 20, 2015



FEB. 18 - MAR. 6, 2016



APR. 14 - MAY 1, 2016



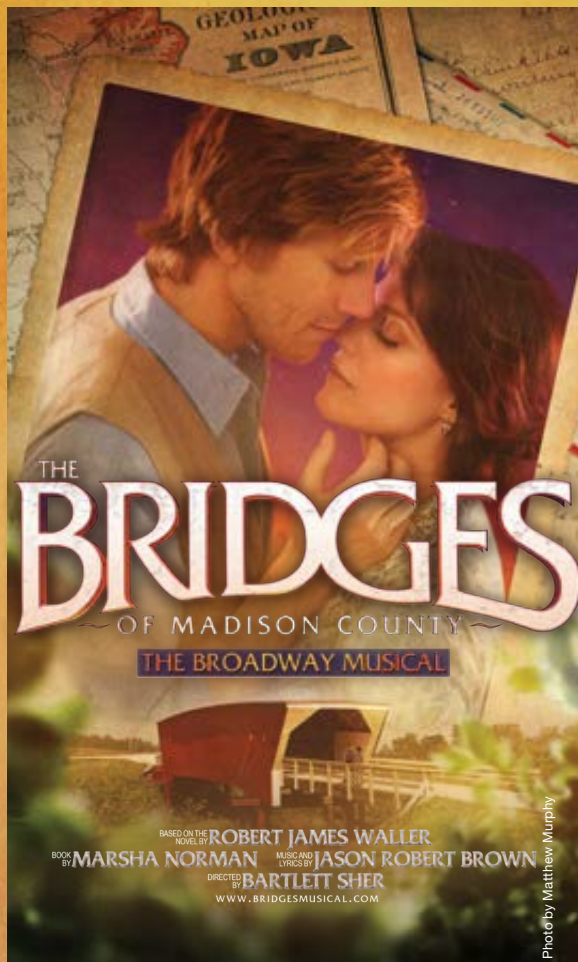
JUNE 3 & 4, 2016

BUY TICKETS NOW!

CALL (615) 541-8200
STUDIOTENN.COM

15
16
SEASON

2014 TONY AWARD WINNER!
BEST SCORE



MAY 10-15
ON SALE NOW!

TPAC.ORG/Bridges • 615-782-4040

TPAC Box Office

GROUPS OF 10 OR MORE CALL 615-782-4060

TPAC.ORG is the official online source for buying tickets to TPAC events.

Original Broadway Cast Recording Now
 Available on Amazon from Ghostlight Records

Broadway Series sponsored by



The Tennessee Performing Arts Center gratefully acknowledges **2015-16 SPONSORS**

Broadway Series Title Sponsor:



Premier Partners (\$100,000+)



RAYMOND JAMES®



THE TENNESSEAN

Signature Partners (\$50,000+)



Sustaining Partners (\$25,000+)

BUTLER | SNOW



Contributing Partners



BROWN-FORMAN



GRAND AVENUE™
 BE DRIVEN

GRANDCENTRAL
 BARTER



The Tennessee Performing Arts Center is an accessible facility with a variety of services. For more information, see page 60 of this playbill or visit TPAC.org.

**A Night with Janis Joplin matinee,
 SATURDAY, APRIL 16, 2016**

AUDIO DESCRIPTION: Julia Cawthon



TPAC gratefully acknowledges the following organizations and individuals for gifts and pledges received from April 2015 – April 2016.

These gifts support TPAC Education, performing arts programs, and special projects. For more information about donor benefits and sponsorship opportunities, or to notify us of any errors or omissions, please contact TPAC Development at 615-687-4315.

BOARD OF DIRECTORS

C. Dale Allen
Barbara T. Bovender
John Cody
Ronald L. Corbin
Elizabeth S. Courtney
Ansel L. Davis
Emanuel J. Eads
Rod Essig
Eddie George
J. Reginald Hill
Martha R. Ingram
Martha Ivester
Dr. Nola Jones
Tracy Kane
Christine Karbowiak
Bill Lynch
Melvin J. Malone
Marcus McKamey
Sherri Neal
Nathan Poss
Jim Schmitz
Larry Stessel
Andrew Tavi
Rhonda Taylor
Claire Tucker
Dr. Philip Wenk
Gail Carr Williams
Uzi Yemin

GOVERNMENT, CORPORATE, AND FOUNDATION CONTRIBUTORS

as of April 1, 2016

\$50,000+

Bank of America
CMA Foundation
The Community Foundation of Middle Tennessee
Delta Dental of Tennessee
Google, Inc.
HCA Foundation on behalf of HCA and the TriStar Family of Hospitals
Metro Nashville Arts Commission
The NewsChannel 5 Network
Nissan North America, Inc.
Raymond James
The Tennessean
Tennessee Arts Commission

\$25,000 – \$49,999

Butler Snow
Corrections Corporation of America
Dollar General Literacy Foundation
Monell's Dining and Catering
Regions Bank
Service Management Systems
Vanderbilt University
XMi Commercial Real Estate

\$10,000 – \$24,999

Anonymous
511 Group, Inc.
BlueCross BlueShield of Tennessee
Bridgestone Americas Tire Operations, LLC
Bridgestone Americas Trust Fund
Brown-Forman
Caterpillar Financial Services Corporation
Coca-Cola Bottling Company Consolidated
Dollar General Corporation
Gannett Foundation
Grand Avenue
Grand Central Barter
HCA-Caring for the Community
Ingram Industries
Liberty Party Rental
MEDHOST
The Mall at Green Hills
The Memorial Foundation
National Endowment for the Arts

NovaCopy
Premiere Properties Group, LLC
Mary C. Ragland Foundation
Robert K. and Anne H. Zelle Fund for Fine and Performing Arts*
Ryman Hospitality Properties Foundation
Travelink, American Express Travel

\$5,000 – \$9,999

Adams & Reese LLP
Baulch Family Foundation
Bonnaroo Works Fund
Community Health Systems Foundation
Delek Fund for Hope*
Earl Swensson Associates, Inc.
Ernst & Young LLP
Joel C. Gordon & Bernice W. Gordon Family Foundation*
JohnsonPoss
Lindis B. Gullett Charitable Lead Annuity Trust
Middle Tennessee Performing Arts H.O.T. Support Fund
Nashville Convention and Visitors Corporation
Nashville Predators Foundation
Premiere Speakers Bureau, Inc.
Publix Super Markets Charities
The Rechter Family Fund*
Sargent's Fine Catering
SunTrust Bank, Nashville
Waller
Washington Foundation
Woodmont Investment Counsel, LLC

\$2,500 – \$4,999

Aladdin Industries Foundation, Inc.
Athens Distributing Company
Best Brands, Inc.
Creative Artists Agency
Crumb de la Crumb
EBS Foundation
Enterprise Holdings Foundation
Samuel M. Fleming Foundation
Patricia C. & Thomas F. Frist Designated Fund*
Minuteman Press
Kendra Scott
Irvin and Beverly Small Foundation
South Arts

\$1,500 – \$2,499

The Atticus Trust
Ezell Foundation
Hard Rock Cafe
Puckett's Grocery & Restaurant

\$500 – \$1,499

American Paper & Twine Charitable Fund
Amerigo
Cabot Creamery Cooperative of Vermont
Fleet One, LLC
The Franklin Center for Skin & Laser Surgery
The Dorothy Cate and Thomas F. Frist Foundation
Glover Group Entertainment
Kraft CPAs
Kroger Company
Loews Hotels
Morton's The Steakhouse, Nashville
Nashville Arts & Entertainment Magazine
Nfocus
Omni Nashville Hotel
Purity Foundation
Sprinkles
Wright Travel Agency

\$250 – \$499

C-Tech Controls

Law Office of Michael K. Williamson
Louisiana-Pacific Foundation
Microsoft
Millennium Security Services
Miss Kitty's Bed and Bath

INDIVIDUAL CONTRIBUTORS as of April 1, 2016

CHAIRMAN'S CIRCLE \$10,000 +

Julie and Dale Allen
Mr. and Mrs. Jack O. Bovender Jr.
Anita and Larry Cash
Eva-Lena and John Cody
Martha R. Ingram

PRODUCER'S CIRCLE \$5,000 – \$9,999

Mr. and Mrs. David J. Baulch
Mr. and Mrs. Robert E. Baulch Jr.
Mr. and Mrs. Robert E. Baulch III
Kelly and Richard Crook
Dr. and Mrs. Jeffrey Eskind
Beth Fortune and Debbie Turner
Chuck Hall
John Reginald Hill
Mrs. Victor S. Johnson Jr.
Mr. and Mrs. Victor S. Johnson III
Kathleen and Tim O'Brien
Mr. and Mrs. Ben R. Rechter
Judy and Steve Turner
Neil and Chris Tyler

APPLAUSE SOCIETY \$1,250 – \$4,999

Mr. and Mrs. Craig J. Andreen
Colleen and Beth Atwood
Melinda and Jeff Balser
Jeffrey and Barbara Basalyga
Kevin Bay
Dr. Steven Bengelsdorf
Marla Blessey
Dr. and Mrs. Frank H. Boehm
Mary and Ron Buck
Michelle and Paulus Buijsman
Melvin and Shirley Butler
Gary Bynum
Andrea Carlton
Drs. Toni and Timothy Carlton
Anthony and Diane Carroccia
Mr. and Mrs. Christopher John Casa Santa
Elizabeth and Jerone Cecelic
Mrs. William S. Cochran Sr.
J. Chase Cole
Marjorie and Allen Collins
Ronald L. and Brenda J. Corbin
Mr. and Mrs. Richard Courtney
Pam and Louis Cuccia
Mary Britton Cummings and Joseph Cummings
Mildred and Richard Darragh
Jana and Ansel Davis
Marty and Betty Dickens
Barbara and Emanuel Eads
Wendy and Mark Eddy
Billy and Jamie Eskind
Jane and Richard Eskind and Family
Seth and Judy Eskind Household
Laurie and Steven Eskind
Shary and Rod Essig
Robert Evans
Linda and Miles Ezell
Robert Finn and Gary Lingofelter
Mrs. Charles C. Fowler Jr.
Dr. and Mrs. Thomas F. Frist Jr.
John Mack Green
Tracy Guarino and Joseph Calabrace
Gail Guindazola
Carolyn and Terry Hamby
Becky Harrell
Lisa Hartman
Dr. and Mrs. Stephen L. Houff

Rick Isaacson
Teresa and Andre Jaeckle
Timothy and Stefanie Jakobs
Dr. Angela Jefferson
Susan and Bill Joy
Joseph Judkins and Renée Conde
Ray and Rosemarie Kalil
Jacqueline Kelly
Lee and Glenda Kraft
Michael D. and Kimberly M. Law
The Honorable Thomas and Terri Lewis
Mr. and Mrs. Bill Lynch
Spence and Leigh Madell
Teresa and Reagan Major
Mr. and Mrs. William Maksymowicz
Melvin Malone
Diane and Frank May
Sheila and Richard McCarty
Marcus McKamey
Susan and Michael McKay
Mr. and Mrs. Michael Ray McWherter
Robert and Yin Mericle
Alisa Miles
Lisa and Timothy Moore
Teresa and Mike Nacarato
Dr. and Mrs. Mathew Ninan
Dr. Casey and Mrs. Holly Noble
Randall Phillips
Cathy and Craig Polkow
Mr. and Mrs. Dale W. Polley
Nathan Poss
Wells Richardson and Jane Bowlin
Carla Robertson
Mark and Carla Rosenthal
Anne and Joseph Russell
Dr. Norman Scarborough and Ms. Kimberly Hewell
Michelle and Jim Schmitz
Janet and William Schock
Dr. and Mrs. Timothy P. Schoettle
Catherine and Tom Sinkewicz
Sloan Family
Mr. and Mrs. Irvin Small
Rebecca and William Smith
Debbie and Scott Snoyer
Ronnie Steine and Beverly Keel
Sara and Larry Stessel
Deborah and James P. Stonehocker
Lauren and Andrew Tavi
Mona and David M. Tehle
Mr. and Mrs. Jim Tothacer
Sarah Trahern and Wayne Flatt
Byron and Aleta Trauger
Dianne and Tom True
Claire Whitfield Tucker
Mr. and Mrs. Cal Turner III
Lyn N. Walker
Greta and Jim Walsh
Dr. and Mrs. Philip A. Wenk
Mrs. John Warner White
David and Gail Williams
Donald R. Williams and Richard W. Zelek
Dallas and Fleming Wilt
Jim and Maureen Wynalek
Kurt Zettel and Anna Burgner
Denise and Victor Zirilli
Kathleen M. Zuccaro

DIRECTOR'S CIRCLE \$700 – \$1,249
Dr. and Mrs. Jeffrey T. Adams
Mary Bass
Bob and Margaret Beck
Suzanne Bradford and Judy Lojek
Mr. and Mrs. Frank M. Bumstead
Michael and Pamela Carter
Kerri Cavanaugh and Michael Schlosser
Drs. Walter and Deborah Clair

Bess Clemons
 Jane and Bill Coble
 Janice J. Compton
 Ms. Andrea Conte and
 Honorable Phil Bredesen
 Beth Crabb
 Anna Catherine Davenport
 Alice and Walton Denton
 Fred Dettwiller
 Pam Dishman
 Dr. James E. and
 COL Beverly E. Edwards
 Robert Eisenstein
 Holly and Craig Evans
 Judy and Tom Foster
 Andrew and Allison Fowler
 Jeanne Gavigan
 Julie Gillen
 Mr. and Mrs. Fred C. Goad
 Mr. and Mrs. Aubrey B.
 Harwell Jr.
 Debbie Herod
 Diane Kruse
 Mr. and Mrs. Randolph
 M. Lagasse
 Kimberly and James Lewis
 Heather and Alan Looney
 Gwyneth McEuen
 Paul Cook and Michael McKee
 Cindy and Danielle Mezera
 Kent and Alice Ann Nagel
 Dana and Peter Nappi
 Nan Parrish
 C. Wright Pinson
 Karen and Tyler Russell
 Madeleine and Paul Sapoch
 Elaina Scott
 Mr. and Mrs. William Spehr
 Joe N. and Brenda Steakley
 Rhonda Taylor and Kevin Forbes
 James Weaver
 Jerry and Eric Williams

PERFORMER'S CIRCLE \$300 - \$699

Anonymous (2)
 Linda Albertalli
 Laura Alford and
 Maddie Hickman
 Lainie and Roger Allbee
 Gay and Laurence Alvarez
 Karen and James Ankrom
 Dreama Arguello
 Kris Atkins
 C. Nelson Bailey
 Carolyn and Kirby Baker
 Clark and Carolyn Baker
 Dolores A. Barnett
 Richard Barnett
 Christie Barrett
 Sharon and John Barrett
 Gary Barton and
 Steve Manchester
 Dana and Martin Bauguess
 Betty Beasley and Melissa Ott
 Piper and James Bell
 Mrs. Annie Laurie Berry
 Joanne Bertone
 Diane R. Berly
 Justin R. Billings
 Cherry and Richard Bird
 Brian K. Blackburn
 Anita and Michael Blackmer
 Rose and Allan Bleich
 Patricia J. Bloomfield and
 Wayne Irvin
 Sally Ann Blue
 Allison and Joe Boever
 Mr. and Mrs. Paul Boklage
 April and Robert Bosse
 Jerry Boswell
 Mr. and Mrs. C. E. Bowden
 Keith Bowman and
 James Lassiter
 Patricia Bradford and
 Dr. Michael Batty
 Pam and Jim Brady
 Elizabeth Brandau
 Dr. and Mrs. Barry W. Brasfield
 Andy Brashier
 Jo Ann Brassfield
 Robyn and Livingston Brien
 David and Jenny Briggs



James Bristol
 Louise and Eric Brock
 Lorrie K. Brouse and
 Richard Piazza
 Erica Brown
 Patsy and G. William Brown
 Cari Buckingham
 Dr. and Mrs. E. James Burton
 Fay Burton
 James and Annette Butler
 Mrs. Lillian Caldwell and
 Mr. Joe Caldwell
 Lauren Campbell
 Russ and Penny Campbell
 Jeff and Kathy Cartwright
 Agenia Clark
 Mr. and Mrs. Roy E. Claverie Sr.
 Kira and Jeff Cleveland
 Mike Clutts
 Jennifer M. Cochran
 Kathleen Cockshaw
 Deborah Coleman
 Sam and Debbie Collins
 Jennifer Colquitt
 Mr. and Mrs. Tom Cone
 Joel and Rebecca Cooper
 Virginia Hixon Corbitt
 Mr. and Mrs. James A. Croy
 Kevin and Mitzi Curlee
 Kimberly L. Darlington
 Nancy and Bob Darnall
 Robert and Ruth Darula
 Gina and John Davis
 Ann and Kirby Davis
 Joy Day
 Jennie Dean
 Teresa Deathridge
 R. Allen Decuyper and Steve Sirls
 Teri S. Devries
 Brad Dilling
 Kathleen V. Dixon
 Tim and Tiffany Dodge
 Mr. and Mrs. Robert Doochin
 Myrtianne Downs
 Bill and Linda Duncan
 Ernest and Mitzi Dunkley
 Pamela and David Duquette
 Kitty and Pat Emery
 Annette S. Eskind
 Jeff Eubanks
 Jill Fainter
 Louis Falzetti
 Sylvia and Kenneth Faries
 Joel and Julie Fay
 Jenni and Henry Feldhaus

Mr. and Mrs. John D. Ferguson
 Holly and Andrew Feris
 Charlie and Susan Finch
 Kellie Fitzpatrick
 Jon and Lauren Folk
 Virginia Fontanella
 Linda and David Forrester
 Kimberley and Ryan Foster
 Joan and Dick Fox
 Leslie Fram and Lanny West
 Michelle and Stephen Frohsin
 Debi and Lance Fusacchia
 Dr. Gary Gallant
 Suzanne Glover
 Dr. Barry W. Goley and
 Grant W. Goodman
 Tracy and Robert Good
 Kim and Dan Gordon
 David B. Gray
 Don Gray
 David and Nicole Green
 Kat and Jeff Greene
 Jane Greenway
 Cathy Guenther
 Cathy Gunn
 G. T. Guthrie
 Donna and John Hagan
 Carl and Connie Haley
 Mr. and Mrs. Michael J. Harbers
 Adrienne Harms
 Barbara Hayes
 Dr. and Mrs. Hugh L. Head III
 Jim Hearn
 The Helm Family
 Larry and Tammy Helms
 Arthur and Loyda Henderson
 Mr. and Mrs. Kevin R. Hennessy
 Winston C. Hickman Jr.
 Hank and Mary Hildebrand
 Patricia Hillhouse
 Chris J. Hohl
 Mr. Jim Holland
 Greg and Becca Hollis
 Jeff and Ashley Hollis
 Deborah and Donald Holmes
 Joan Z. Hornberger
 Helen R. Houston
 Joan Howard
 Dr. and Mrs. Richard A.
 Howerton
 Sara and David Hunt
 Melissa and Douglas Hunter
 Mr. and Mrs. Shandy Husmann
 Cameron Hyder
 Dana Moore and Jack Isenhour
 Honorable and Mrs. Ed Jackson

David and Michelle James
 Debbie and Gary Janke
 Karissa Jargo
 Fred and Kathy Johnson
 Julia and Walt Johnson
 Lisa L. Johnson
 Alysha Jones
 Brian and Jenni Jones
 Dr. Nola Jones
 Candace and Arvinhd
 Kanagasundram
 Christine Karbowiak and
 Martin Vanek
 James and Libby Kelly
 Jeanette and
 Christopher Kenyon
 Teresa Kersey
 George and Sue Kettle
 Michael Kice
 Nicholas Kilen
 Lloyd King
 Arthur Kirkby
 Herb Knopp
 Janet and James Knox
 Debra and James Kovanda
 Kenneth Kraft and Lucilyn Crow
 Jan and Rand Krikorian
 Paul H. Kuhn Jr.
 Dr. Robert and Lori Landsberg
 Robert Lane and Emily Vandiver
 Timothy Larson
 Ms. Marketta Laurila
 Christopher and Vera Lee
 Patti and Don Liedtke
 Andrea Lindsey
 Cecilia Little
 Mary and Arthur Lodge
 Ruthie and Katie Logan
 Rhonda and Danny Long
 Nancy Lorenzi
 Angela and Gene Lovell
 Sandra Lowe
 Rhonda and Randy Lowry
 Amy and George Lynch
 Don and Kathy MacLachlan
 Nancy MacLean
 Dr. and Mrs. Samuel MacMaster
 Gretchen and Brian Macy
 Jane and John Malatak
 Marilyn Martin
 Robert Mathews
 Pamela McAteer
 Juli and David McCay
 John and Robin McClellan
 Robert W. McDonald
 Tim and Karen McLaughlin

Adrienne and Richard McRae III
 Roy D. Meadows
 Darrell Merryman and
 Jennifer Wright
 Barbara and Don Meyer
 Mitzi and Rick Michaelson Jr.
 David and Lisa Minnigan
 Michelle M. Mittiga
 Diana and Jeffrey Mobley
 Tom and Vicki Moon
 Janice B. Moore
 Joann Morris
 Kristi and Gregory Morrow
 Mr. and Mrs. John Muchukot
 Jeff and Stephane Murphy
 Marie Murphy
 Mickeye M. Murphy
 Pat and Kitty Murphy
 Kay Awalt Musgrove
 Mr. and Mrs. Jack Nadeau
 Mr. and Mrs. William Newton
 Kristin E. Nishanian
 Agatha Nolen
 Laura and Vincent Nord
 Andre and Jeani Olivier
 Corinne J. Oreilly and
 Richard Bissonette
 Jeff and Leslie Overby
 Jeff and Meghan Owen
 Julie Owens
 David and Pamela Palmer
 Evetta K. Palmer
 Jerry Parker
 J. Russell and Phyllis Parkes
 Pat Payne
 Nancy and Stephen Peluso
 Mr. and Mrs. Delmer H. Peppers
 John and Kandace Peppers
 Elizabeth and Phil Perkins
 Susan and Lawrence Phillips
 Rose and Kip Pierce
 Lyn Plantinga
 Rodney and Holly Poling
 Lisa Pressnell
 Larry and Michelle Price
 Linda and Tim Priddy
 Joyce and George Pust
 Edria and David Ragosin
 Ruth T. Raines
 Patricia and Douglas Ralls
 Elizabeth and Nancy Rankin
 Sibyl Reagan
 David Reiland and Diane Honda
 Daniel Renfroe
 Brad and Evelyn Rhoades
 Mary Richardson
 Joshua Riddell and
 Elizabeth Rowland-Riddell
 Paul and Marjorie Ridge
 Charlotte Roberts
 Scott and Kristy Robinson
 Susan and Phillip Robinson
 Evelyn and William Rodgers
 Joyce and Mace Rothenberg
 Patricia and Craig Rothschild
 Cheryl Rudnicke
 Mr. and Mrs. Rundle
 Linda Simmons and
 Ronald Runyeon
 Marianne and Chris Sabis
 Laurie L. Sackett and
 Mary Ellen Stevens
 Teresa Sadler
 Amy G. Sale
 Susan Sanders and
 Steve Woodard
 Deborah Saunders
 John and Debbie Scannapieco
 Jean and Stuart Schmidt
 Susan Schuchard
 Carol and Alvin Scott
 Sally and Paul Scott
 Jeff and Jennifer Seebach
 Dolores W. Seigenthaler
 Kelly and Kevin Sekuterski
 Charles Selke
 Jeanne Sellars
 Robert Sentz
 Darendra Shannon
 Jimmy and Simone Sheats
 Paul D. Sheriff
 Sharon and Bill Sheriff
 Cindy Shields
 Melanie M. Simon

Helen Sirett and Ken Hendrix
 Holly Smith and Johnna Wilson
 Dr. Neil and Ruth Smith
 Mr. and Mrs. Thomas S. Smith
 Dr. and Mrs. Duane T. Smoot
 Robert Sneed
 Ashley Sonn and Jordan Miller
 Chris and Patrick Sowada
 Jennifer L. Spain
 Robert and Jane Stammer
 Judy Steele
 Frank W. Stevens MD
 Charles Stewart
 Heidi and Greg Stogner
 Joy Strange
 Tracy and John Szente
 Doris R. Taft
 Dr. F. William Taylor
 Martha and Bill Thompson
 Julie and Brian Thure
 Edward Tietgens
 Carlos Tirres
 Jeremy and Callie Tucker
 Dustin Turner and Damian Gatta
 Margaret and George Uribe
 Eric Vai
 Ms. Candy Varble
 Mr. and Mrs. Bart E. Verhulst
 Ann Waddey
 Mary Wade
 Janice Walker
 Dr. and Mrs. Bill Wall III
 Richard Walters
 Cynthia and Quinton Wasden
 David Watson
 Kenneth and Julia Weiss
 Chris and Beth West
 Roberta and Steve West
 Jeff P. White
 Bradley and Susan Widmann
 Dr. Brian Widmar and
 Brad Bennett
 Dr. and Mrs. Joseph Wiecek
 Dr. and Mrs. J. Kenneth Williams
 Michael K. Williamson
 Dr. William R. Wilson
 Vickie and Don Wirth
 Scott Woods
 Susan R. Woods
 Cliff and Amy Wright
 Margaret and Ron Wright
 Sharon Yates
 Kelly and Steven Yokley
 Jamie and Andrew L. Young
 Bill and Jane Young
 Mr. Jeffrey Young
 William D. Young
 Mr. and Mrs. Julian A. Zander Jr.
 Shirley Zeitlin
 Sarah Zhang
 Kerndt and Theresa Zuckowsky

PATRONS

\$100 – \$299

Anonymous (3)
 Kathleen Airhart
 Edgar and Kathi Allen
 Dr. and Mrs. Douglas
 C. Altenbern Jr.
 Dr. and Mrs. Edwin
 B. Anderson Jr.
 Leigh and Hunter Atkins
 Stacy Awalt
 Grace and Carl Awh
 Debra Barnes
 Diane Becker
 Rob and Melissa Beckham
 Fred and Anne Beesley
 Betty Bellamy
 Mr. and Mrs. W. E. Bingham
 Karen and Peter F. Bird Jr.
 Gene and Natalie Boerger
 Mary Bolte
 Debbie Booton
 Eric and Catherine Bottoms
 Richard and Sara Bovender
 Bella M. Briggs
 Eric and Sue Broder
 Thomas Carey
 Dr. Ana M. Carmona
 Dr. John Jeffrey Carr and
 Ms. Pamela Crowe Carr
 James E. Cason
 Barbara and Eric Chazen

Nancy and John Cheadle
 Renée Chevalier
 Mr. and Mrs. Robert L. Chickey
 Bette and Mark Christofersen
 Nancy and Terry Clements
 Sally and Neely Coble
 Charles W. Cook Jr.
 Courtney Corbin-Simon
 Renette Corensweat
 Phyllis Covert
 Susan Cox
 Dorcas Crosthwait
 Doug and Sondra Cruickshanks
 Mr. and Mrs. Brownlee
 O. Currey Jr.
 Christina Daigle
 Patricia D'Alessandro
 Brittany Dalton
 Mark and Nancy Davison
 Ken Dease and Julie Stensrud
 Dr. and Mrs. Roy L. DeHart
 Betty and Vern Denney
 Drs. Richard and Carol Detmer
 Diana and Michael Diaz
 Lee Lee and Wally Dietz
 Jessica Ditto
 Kathy Doman
 Christi Dortch
 Gary and Paulette Dowdy
 Donna Dudek
 Catherine M. Duffy
 Bob and Nancy Dunkerley
 Anne and Darryl L. Edmonds
 Mr. and Mrs. Thomas S.
 Edmondson Sr.
 Georgette and Shervin Eftekhari
 Teresa Ellithorpe
 Zita and Dan Elrod
 Nancy and Hugh Entreklin
 Mr. and Mrs. Jere M. Ervin
 Olivia and Bruce Evans
 Marcia Everett
 Harry W. Exell and
 Dr. Mary R. McBean
 Cherrie Farnette
 Mr. and Mrs. Jack Fleischer
 Jessie and Carolyn Foster
 Charlotte Fransen
 Sandra Freeze
 Ms. Mary Galbraith
 Mr. and Mrs. Albert Ganier III
 Elizabeth Pierce and James Gay
 Brenda Geise
 Dodie and Carl George
 Diane and Gary Gober
 Megan L. Goosetree
 Barbara and Milton Grossman
 Mr. and Mrs. Dannie Harrison
 Mark Hartzog
 Dixie Heagy
 Buzz Heidtke
 Mr. and Mrs. Eugene Heller
 Dr. and Mrs. Reggie Henderson
 The Honorable and
 Mrs. Douglas Henry Jr.
 Karen and Mark Hodges
 Jay and Meredith Hollomon
 Chris and Susan Holmes
 Mr. and Mrs. Henry W. Hooker
 Martha Hooper
 Donna and Michael Horton
 Nancy and Jon Houge
 Sue and James R. Hurt
 Melissa and Bentz Huschke
 Danette and Matthew Idlett
 Melissa R. Irvin
 Frances C. Jackson
 Mr. and Mrs. Steve Jackson
 Dr. and Mrs. C. H. Jameson III
 Mike Jaramillo
 Edie and David Johnson
 Lisa K. Johnson
 Will and Irish Johnston
 Don and Leigh Jones
 Ed Kaiser
 William B. King
 Sandra Koczwarra
 Ellen and Buddy Koonce
 Linda and Richard Kotler
 Howard and Elizabeth Lamar
 Sharon H. Lassiter
 William H. Lassiter Jr.
 Christy Lawson

Sharon and Keith Lesain-
 Edwards
 Mr. and Mrs. Irving Levy
 Richard and Tad Lisella
 Christine Lombardi Household
 Steve and Marilyn Lorenz
 Charisse Luckey
 Shirley Malchow and
 Molly McGill
 Jennifer Mallory
 Richard and Ruth Manson
 Mr. and Mrs. Tony Marks
 Mr. and Mrs. Henry Martin
 Drs. Paul and
 Pat Matthews-Juarez
 Richard May
 Mr. and Mrs. James L.
 McGregor
 Anne Elizabeth McIntosh
 Mr. and Mrs. Robert E.
 McNeilly Jr.
 Anne Moore
 Mary Sue and Chris Moore
 Elizabeth and Michael Morard
 Dale and Deborah Mosley
 Jimmy Naifeh
 Scotty Neal
 Sherri and Marvin Neal
 Richard Neubauer
 Dr. Clint Newman
 Penny Nichting
 Iris A. Nolan
 Corinne O' Connor
 Mr. and Mrs. William C.
 O'Neil Jr.
 Courtney Owen
 Chrsy Ozier
 Dr. and Mrs. Philip M. Pfeffer
 Charley and Alexia Poe
 Mr. and Mrs. Marshall T. Polk III
 Jennifer and Gus Puryear
 Mr. and Mrs. Hugh Queener
 Michael Radyko
 Jeanie Page Randall
 Christie L. Reeves
 Ann V. Roberts
 Mr. and Mrs. Kenneth L. Roberts
 Mary Ellen and Tom Rodgers
 Mary and David Rollins
 Judith R. Roney
 Donna and Steven Rosenfarb
 Victoria O. Ross
 Mr. and Mrs. J. R. Rudd
 Jim and Lee Ann Ruderer
 Patty and Tom Sabella
 David Sampsell
 Ashley Sanders
 Ralph and Leeanne Schulz
 Mr. and Mrs. James
 C. Seabury III
 Charles and Bettye Seivers
 Scott Sideman
 Alice Sisk
 J. Smith
 Suzanne and Grant Smothers
 Lelan and Dr. Yolanda Statom
 Nancy Sugg
 Lisa G. Thomas
 Kimberly D. Thompson
 Mr. and Mrs. James F. Turner Jr.
 Robert J. Turner
 Frances Anne Varallo
 Betty J. Vernon
 Joyce A. Vise
 Jane M. Wakefield
 Jane Walker
 Lori Ward
 Johnna Watson
 Angie and Tony Weeks
 Colleen Conway-Welch
 Dr. J.J. Wendel
 Charles and Fran White
 Irene and Ridley Wills
 Yvonne C. Wood
 Dahna Wright
 Dr. and Mrs. Carl W. Zimmerman

Celebrating the best Nashville has to offer in Arts & Entertainment



BUY NOW at
NAEmag.com
and at area Newsstands



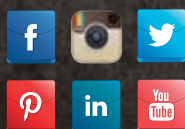
A Glover Group Entertainment Production

**T.J. MARTELL
FOUNDATION
CELEBRATING
OUR
40TH
ANNIVERSARY**

*...continuing our
mission of funding
life-saving research
at the Frances
Williams Preston
Laboratories at the
Vanderbilt-Ingram
Cancer Center.*



**15 Music Square W
Suite C
Nashville, TN 37203
615-256-2002
tjmartell.org**



GOOD MONSTERS

by Nate Eppler

FEBRUARY 11-27, 2016



NASHVILLE
REPERTORY
THEATRE

nashvillerep.org

CHICAGO

music by John Kander, lyrics by Fred Ebb,
book by Fred Ebb & Bob Fosse

MARCH 17 - APRIL 16, 2016



Concerns or compliments?
PatronServices@TPAC.org

Accessibility Services at TPAC

include parking, elevators, wheelchair seating, use of a TPAC wheelchair, designated restrooms, and services for hearing and visually impaired patrons. Infrared assisted listening devices are available at no charge at the entrance to each theater. TPAC offers signing for hearing impaired patrons, and audio description and Braille programs for blind and visually impaired patrons on the Sunday matinee in the season ticket series of HCA/TriStar Health Broadway at TPAC. Large print programs are available for Broadway and TPAC Presents shows. Special accessibility requests and concerns, excluding assisted listening headsets, should be discussed in advance with the TPAC House Manager at 615-782-4087. Reservations for a wheelchair should be made on the day of performance.

Restrooms for Jackson Hall are located one level down from the 6th Avenue entrance, in the halls behind the seats in the tier and balcony, and downstairs in the back of the orchestra level. Restrooms for Polk Theater are located down the stairs to the left of the entrance to the orchestra level and on the balcony level.

Bars are located in the lobbies and in the back of the orchestra level of Jackson Hall.

An ATM is on the G-Level, near the main security desk at the Deaderick Street entrance to the building.

All electronic devices including cell phones, pagers, watch alarms, cameras, and recorders should be turned off prior to the performance or checked-in with the floor manager or an usher, who will note the seating location of physicians and others who expect emergency calls.

Call Lost and Found at 615-782-4098 to report an item you might have left at TPAC.

In case of an emergency, the number to leave with others is 615-782-4000 (plus performance, theater, and seat location).

Smoking, including use of all tobacco products and electronic cigarettes, is permitted outside the building.



Innovation
that excites

THE NEW NISSAN TITAN[®] XD.

HAULS MORE CLASS THAN IT SHOULD.

We dropped a Cummins[®] 5.0L V8 Turbo Diesel¹ into the 2016 TITAN XD. Boosted by a Holset[™] M2 two-stage turbocharger, this beast makes over 310 hp and 555 lb-ft of torque, giving you smooth, efficient towing for more than six tons.² That's heavy-duty attitude in a full-size pickup—the first in a lineup of all-new trucks from Nissan.³



AMERICAN TITAN

DESIGNED IN CALIFORNIA ENGINEERED IN MICHIGAN
TESTED IN ARIZONA ASSEMBLED IN MISSISSIPPI
POWERED BY INDIANA AND TENNESSEE



¹Available engine. ²Estimated towing capacity on select trims based on Nissan internal testing. ³The 2016 Nissan TITAN is not yet available for purchase. Expected availability in December 2015. Pre-production model shown; see actual production vehicle when available for final details on features. See *Nissan Towing Guide* and Owner's Manual for proper use. Cargo and load capacity limited by weight and distribution. Always secure all cargo. Heavy loading of the vehicle with cargo, especially on the roof, will affect the handling and stability of the vehicle. Always wear your seat belt, and please don't drink and drive. ©2015 Nissan North America, Inc.

TACORI



Genesis Diamonds



The Official Jeweler of the Tennessee Titans



Green Hills, TN
(615) 269-6996

Cool Springs, TN
(615) 371-6765

St. Matthews, KY
(502) 891-0424

Cincinnati, OH
(513) 657-3000

www.GenesisDiamonds.net