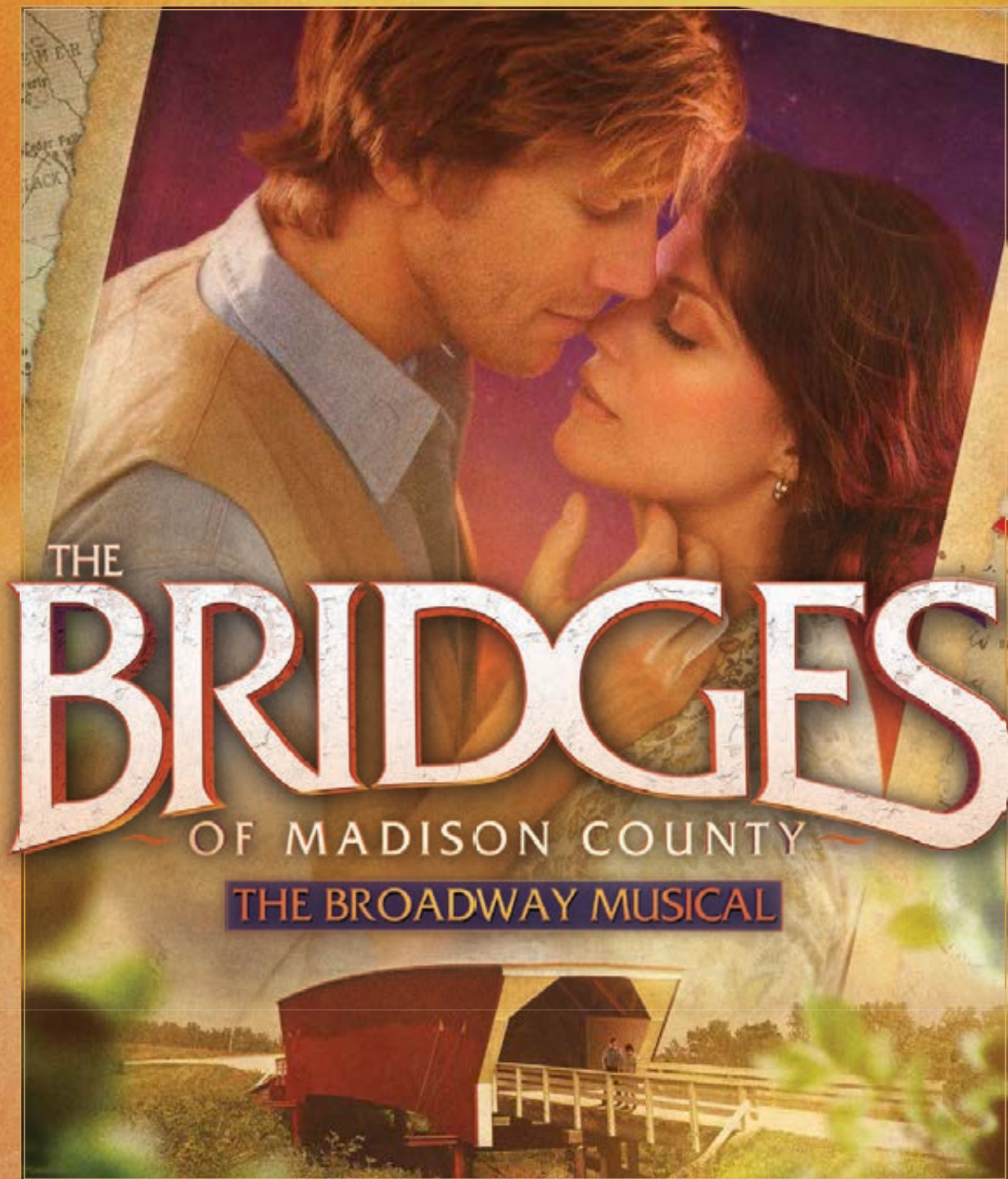




CENTER STAGE

THE BRIDGES OF MADISON COUNTY, May 10-15, 2016 • The official playbill of the Tennessee Performing Arts Center



**Disney's Beauty
and the Beast**
May 31 – June 5

**Gregory
Porter**
June 4

If/Then
June 7-12

See Jane Sing
June 15

**2016-17
Season Tickets
are On Sale Now!**

**FOR TICKETS:
615-782-4040
TPAC.ORG**

ALL-NEW JAGUAR XF

THIS IS NOT BUSINESS AS USUAL



With a lightweight aluminum body and a supercharged 380 hp V6 engine, the 2016 XF is uncommonly quick. Coupled with leading edge technology, it delivers a unique and intuitive driving experience. And with Best-In-Class coverage including complimentary scheduled maintenance, you'll find the XF is anything but expected.*

Call or visit to find out more:

Jaguar Nashville
3 Cadillac Drive
Brentwood, TN 37027
615-986-6000
JaguarNashville.com

THE ART OF PERFORMANCE

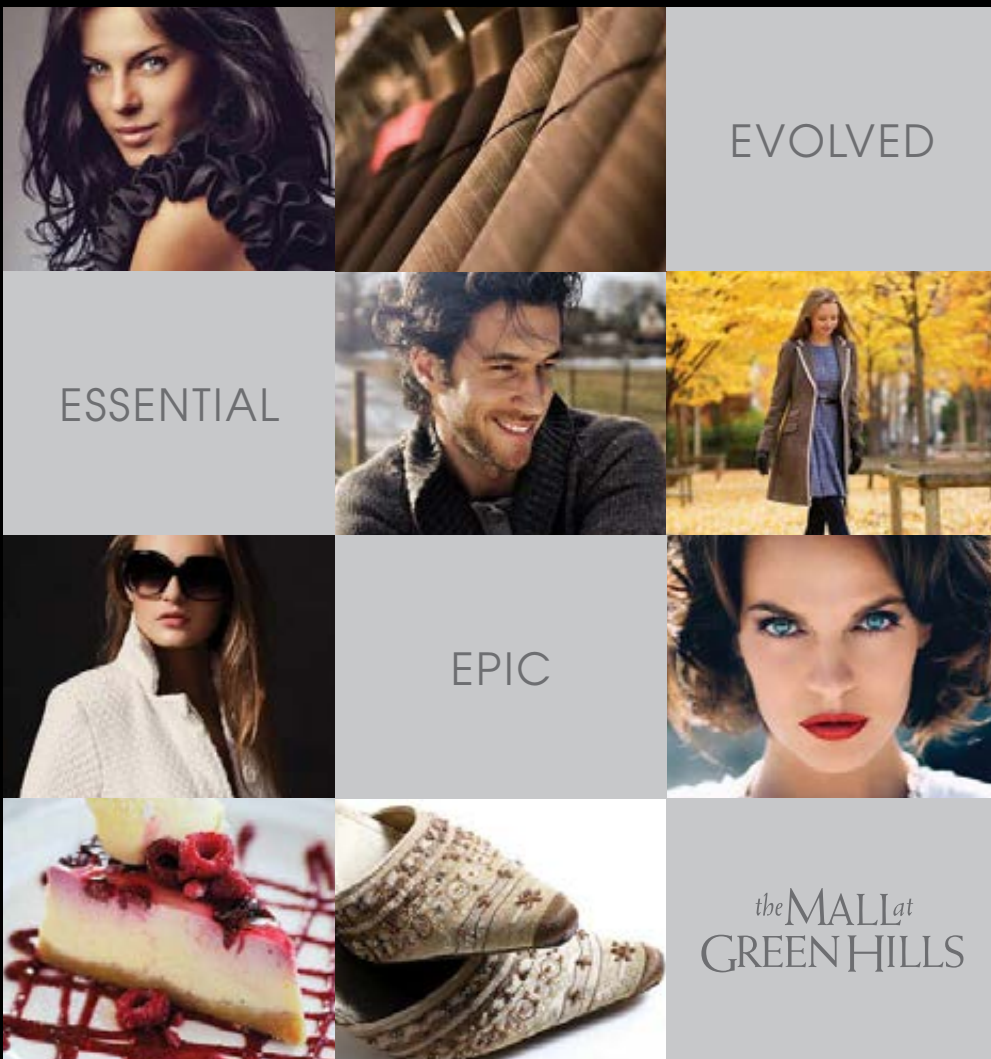
2016 Jaguar XF S vehicle shown. *Class is cars sold by luxury automobile brands and claim is based on total package of warranty, maintenance and other coverage programs. For complete details regarding Jaguar EliteCare coverage, please visit JAGUARUSA.COM, call 1.800.4.JAGUAR or visit your local Jaguar Retailer. © 2015 JAGUAR LAND ROVER NORTH AMERICA, LLC

JAGUAR ELITECARE

BEST IN CLASS COVERAGE

5 YEARS 60,000 MILES

- Ⓐ New Vehicle Limited Warranty
- Ⓥ Complimentary Scheduled Maintenance
- 📞 24-Hour Roadside Assistance
- 📶 Jaguar InControl® Remote & Protect™



APPLE • BCBGMAXAZRIA • BURBERRY • THE CHEESECAKE FACTORY
 THE CONTAINER STORE • DAVID YURMAN • FREE PEOPLE • GUS MAYER
 HANNA ANDERSSON • J.CREW • JIMMY CHOO • KATE SPADE NEW YORK
 LOUIS VUITTON • LILLY PULITZER • MAC COSMETICS • MADEWELL
 OMEGA • RESTORATION HARDWARE • SEPHORA • STUART WEITZMAN
 THE NORTH FACE • TIFFANY & CO. • TORY BURCH • TUMI

the MALL at GREEN HILLS

NORDSTROM • DILLARD'S • MACY'S

OVER 100 SPECIALTY SHOPS & RESTAURANTS

HILLSBORO PIKE, I-440 EXIT 3 • NASHVILLE, TN • SHOPGREENHILLS.COM

Letter from the Publishers

Dear Readers,

We would like to take a moment to acknowledge and honor some of the people who have made a significant impact on arts & entertainment in our city...both from a creative and philanthropic standpoint.

Last year through the pages of our annual newsstand magazine, Nashville Arts & Entertainment Magazine, we began the first annual Nashville Arts & Entertainment Honors.

The 2014-2015 recipients of these honors were: Jeffrey Steele, Steve Buchanan, Martha Ingram, Dr. Thomas Frist Jr. and Vince Gill. Nashville Arts & Entertainment Magazine donated \$1,000 to each of these honoree's local charities.

Our 2015-2016 honorees have just been announced in the new edition of Nashville Arts & Entertainment Magazine, and include: Kathleen O'Brien, John Huie, Nicole Kidman and Alan D. Valentine. To read more about their contributions to arts & entertainment, pick up a copy of Nashville Arts & Entertainment Magazine at area newsstands or order a copy online at: NAEMag.com

We want to also acknowledge and thank our advertisers. As you read your program, please make special note of the companies that advertise. We could not do what we do without their belief in the value of advertising in the arts' publications. You love the arts and so do our advertisers...do business with them when you can!

To learn more about how your company can benefit from an annual ad campaign, go to GloverGroupEntertainment.com or give us a call at 615-429-9689. We provide Nashville and Franklin with a one-stop option for arts and entertainment information and advertising

For additional information and special online promotions, please follow us on Facebook and Twitter. Thank you!

Robin & Gary

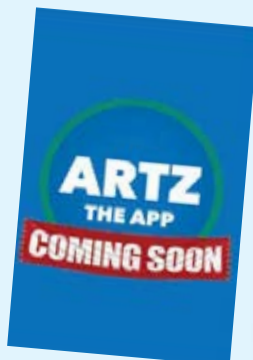
Robin@GloverGroupInc.com
Gary@GloverGroupInc.com

For additional information and special online promotions, please "like" us on Facebook and follow on Twitter

www.NashvilleArtsandEntertainment.com
www.GloverGroupEntertainment.com

NASHVILLE'S PERFORMING ARTS PUBLICATIONS

For Advertising Information, please call 615.429.9689





At Bridgestone
Americas,
performance is
in our blood.
That's why
we're proud to
call Nashville home.

You'll find more than 2,300 Bridgestone teammates
hard at work and play in the communities we call home.
Interested in joining us? Be great. Be Bridgestone.



Join our team of performers at [BeBridgestone.com](https://www.Bridgestone.com)

BRIDGESTONE
Your Journey, Our Passion



Earache.
Fever.
Saturday night.

When you need a pediatrician and your pediatrician's office is closed, bring your child to Vanderbilt Children's After-Hours Clinics. A board-certified Vanderbilt pediatrician is on site nights and weekends, treating everything from flu and fevers to rashes and beans in ears. No appointment necessary — just walk right in. We'll even send your child's pediatrician a same-day report about your visit. For more information, visit [VanderbiltChildrensAfterHours.com](https://www.vanderbiltchildrens.org/after-hours).

Vanderbilt Children's After-Hours Clinics

Open nights and weekends in
Brentwood, Hendersonville, Mt. Juliet and Spring Hill

No referral necessary, but please call your pediatrician first.



The BMW X5

bmwofnashville.com



The Ultimate
Driving Machine®



YOU DON'T NEED A CROWD TO STAND OUT.

THE BMW X5.

With optional third-row seating, up to seven people can go somewhere they've never been before. And with Panoramic Moonroof, BMW Online™ features like Real Time Traffic Information and Internet, and optional Premium Interior, the journey might just outclass the destination.

Special lease and finance offers will be available through BMW Financial Services.

BMW of Nashville | 4040 Armory Oaks Drive | Nashville, TN 37204 | 800-531-0215 | bmwofnashville.com

©2016 BMW of North America, LLC. The BMW name, model names and logo are registered trademarks.



CRYST◉RAMA



Lighting



Appliances



Custom Cabinetry



Hardware & Plumbing



Hermitage
Lighting
Gallery

531 Lafayette Street
Nashville, TN | 615•843•3300
Monday - Friday 8 to 5 | Saturday 9 - 5
www.hermitagelighting.com



Get comfortable with using less energy at home.

Turn your house into the sanctuary it should be. Visit 2eScore.com to find out how energy efficient your home is and what you can do to improve it. With a high eScore and lower energy costs, you'll be able to live comfortably.






STEINWAY PIANO GALLERY NASHVILLE

For over 160 years Steinway has been making instruments so passionately conceived and meticulously crafted, it can take dozens of artisans with decades of experience twelve months to create ... one.



www.SteinwayFamilyPianos.com

Since 1929, we have offered the very best pianos in every price range, as a result we consistently sell more pianos than anyone else in Nashville!



**“WHEN WE GOT TO
WILLIAMSON, THERE
WERE PEOPLE WAITING
ON ME. THEY KNEW
EXACTLY WHAT
TO DO.”**

—ELIZABETH TYER

**AT WILLIAMSON MEDICAL CENTER, OUR
STORY IS BEST TOLD BY OUR PATIENTS.**

They have been here. They know us well.

To Elizabeth Tyer, Williamson Medical Center is where she got her life back. She never expected to have a “widow maker” heart attack in her early 40s, but when she called EMS after sickness that worsened by the hour, our paramedics were able to communicate the status of Elizabeth’s condition so that when they arrived, doctors and nurses were standing by and ready to go.

She had a stent inserted into her aortic artery within the hour and credits the fast response time and knowledgeable cardiologists at WMC with the reason she is here to tell her story today.

We want to hear your story.

MYSTORY@WMED.ORG



4321 CAROTHERS PARKWAY • FRANKLIN
williamsonmedicalcenter.org



You bank with people.

CapStar's Private Banking team knows what makes Nashville tick. It's a city where a handshake still matters. Where looking people in the eye and delivering on a promise isn't old-school, it's the expectation. After all, it's not just your money on the line, it's our reputation. That matters. You matter. And that's our matter of fact way of saying we'll deliver a smarter, more personalized banking experience than the other guys.



capstarbank.com

Member FDIC



Build a Customized Drees Home Anywhere

Whether you already own a lot, need help finding a site, or have a particular property in mind, Design Gallery Homes makes it easy to build a customized home anywhere you want to live.

- Firm contract pricing
- Save thousands with no construction loan
- One-stop selections process
- Formal follow-up program

Homes from the \$270s to the \$800s+, plus home site

For a free lot evaluation or to learn more, call (615) 371-9750 or visit dreeshomes.com



©2014 Drees Premier Homes, Inc. All Rights Reserved.

From Darkness to Sight

FOREWORD BY SENATOR WILLIAM FRIST, MD

FROM DARKNESS TO SIGHT

A JOURNEY FROM HARDSHIP TO HEALING

MING WANG Harvard/MIT (MD)
PhD (laser physics)

From Darkness to Sight chronicles the remarkable life journey of Dr. Ming Wang, a world-renowned laser eye surgeon and philanthropist.

As a teenager, Ming fought valiantly to escape one of history's darkest eras – China's Cultural Revolution – during which millions of innocent youth were deported to remote areas to face a life sentence of poverty and hard labor. Through his own tenacity and his parents' tireless efforts to provide a chance of freedom for their son, Ming eventually made his way to America with \$50 in his pocket and an American dream in his heart, where against all odds he would earn a PhD in laser physics and graduate magna cum laude with the highest honors from Harvard Medical School and MIT. He embraced his Christian faith and tackled one of the most important questions of our time – Are faith and science friends or foes? – which led to his invention of a breakthrough biotechnology to restore sight.

To date, Dr. Wang has performed over 55,000 eye procedures and has treated patients from nearly every state in the U.S. and from over 55 countries worldwide. He is considered the "doctor's doctor," as he has operated on over 4,000 physicians. Dr. Wang has published 8 textbooks and a paper in the world-renowned journal *Nature*, holds several U.S. patents and performed the world's first laser artificial cornea implantation. He is the recipient of the Honor

Award from American Academy of Ophthalmology and the Lifetime Achievement Award from American Chinese Physician Association. Dr. Wang is currently the only surgeon in the state who performs 3D LASIK (18+), 3D Forever Young Lens Surgery (45+), 3D Laser Kamra (45+) and 3D Laser Cataract Surgery (60+). Dr. Wang established a non-profit foundation which provides sight restoration surgeries for indigent patients who otherwise would never have the opportunity to receive them free-of-charge.

This is a story of one man's inspirational journey, of turning fear, poverty, persecution and prejudice into healing and love for others. It demonstrates how focus, determination, humility and profound faith can inspire a life that, in turn, impacts that of countless others.



Tripping down the theatre stairs was not something you had planned for...



neither was your trip to the **ER**

Since everything in life can't be planned, isn't it good to know you can count on short ER wait times at 12 TriStar Health emergency rooms in the greater Nashville area? Emergencies are our first priority and our wait times reflect that sense of urgency whether you have breaks or strains, stomach pains, pounding headaches or chest pain. Emergency trained physicians provide fast and friendly medical care close by so you can get back to the activities you enjoy most.



TRISTARHEALTH.COM



MAKE YOUR HOME A SHOW HOUSE.



The Nashville Symphony Show House 2015 (*shown here*), masterfully crafted by Castle Homes. DON'T JUST BUILD A NEW HOME, LET US CREATE YOU A SHOW HOUSE!

CUSTOM HOMES | REMODELING | INTERIOR DESIGN

615.309.8200

CASTLEHOMES.COM

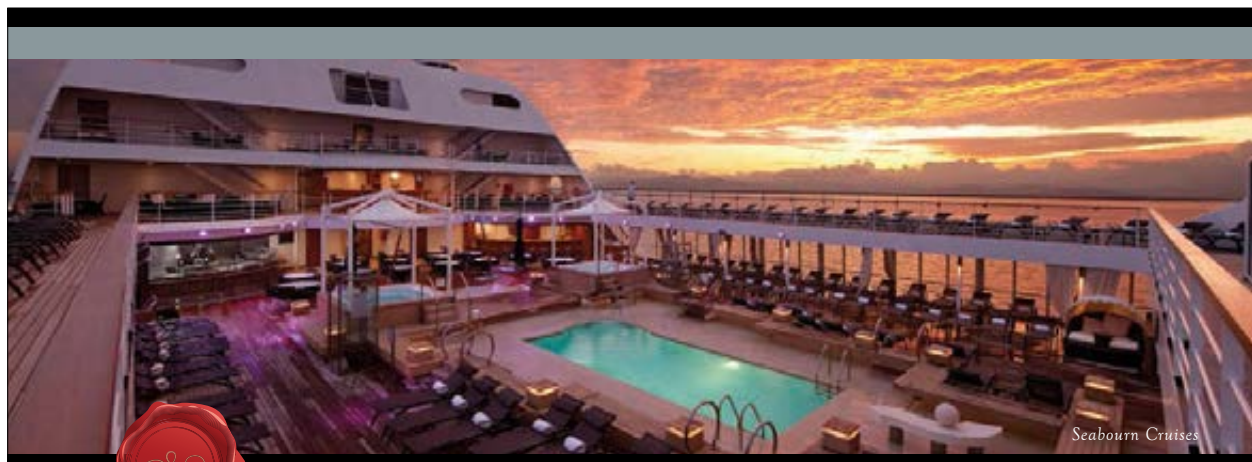
GUARANTEED PRICING

PRE-K-12 • COLLEGE PREPARATORY • INTENTIONALLY CHRISTIAN



Preparing for the Performance of Life.

PRIVATE TOURS OFFERED DAILY • WWW.LIPSCOMBACADEMY.ORG • 615.966.1600



Personally crafted vacations
for discerning travelers

Nashville is home to Privileged Journeys, your inside connection to the world of luxury travel. Our inspired, well-traveled advisors will orchestrate a personally crafted vacation in harmony with your desires ensuring your valuable down time is carefree and well spent.

Contact us today and let our connections help you make yours.

TRAVELINK
Luxury Division

**AMERICAN
FOURTH** TRAVEL

404 BNA Drive • Suite 650 • Nashville, Tennessee 37217
888-920-4977 • privilegedjourneys.com



- Ranked in Travel Weekly's Power List 2012, 2013, 2014, 2015
- Ranked in Nashville Business Journal's Fastest Growing Companies

Jeffrey Richards Jerry Frankel
Hunter Arnold, Ken Davenport, Carl Daikeler,
Independent Presenters Network, Caiola Productions, Will Trice
and
Warner Bros. Theatre Ventures
present

THE
BRIDGES
~ OF MADISON COUNTY ~
THE BROADWAY MUSICAL

BOOK BY
Marsha Norman

MUSIC AND LYRICS BY
Jason Robert Brown

BASED ON THE NOVEL BY **Robert James Waller**

STARRING

Elizabeth Stanley Andrew Samonsky

WITH

Cullen R. Titmas David Hess
Mary Callanan John Campione Caitlin Houlahan Katie Klaus

AND

Cole Burden Caitlyn Caughell Brad Greer Lucy Horton Amy Linden Trista Moldovan
Jessica Sheridan Tom Treadwell Bryan Welnicki J. Michael Zygo

ORIGINAL SCENIC DESIGN
Michael Yeargan

COSTUME DESIGN
Catherine Zuber

LIGHTING DESIGN
Donald Holder

SOUND DESIGN
Jon Weston

ADDITIONAL SET AND ADAPTATION BY
Mikiko Suzuki MacAdams

ASSOCIATE COSTUME DESIGN
Patrick Bevilacqua

ASSOCIATE LIGHTING DESIGN
Michael Jones

ASSOCIATE SOUND DESIGN
Josh Millican

WIGS AND HAIR DESIGN
David Brian Brown

MUSIC ARRANGEMENTS AND
ORCHESTRATIONS
Jason Robert Brown

MUSIC COORDINATOR
Michael Keller
Michael Aarons

MUSIC DIRECTOR
Keith Levenson

TOUR BOOKING
The Booking Company
Meredith Blair

CASTING
Telsey + Company
Abbie Brady-Dalton, CSA
Cesar Rocha, CSA

TOUR PRESS & MARKETING
Type A Marketing

DIALECT COACH
Stephen Gabis

PRODUCTION MANAGER
Hector Guivas

PRODUCTION STAGE MANAGER
Melissa Chacón

COMPANY MANAGER
Ryan Parliment

GENERAL MANAGER
Mary K. Witte

MUSIC SUPERVISOR
Tom Murray

DIRECTION RECREATED BY
Tyne Rafaeli

MOVEMENT
Danny Mefford

ORIGINAL DIRECTION BY
Bartlett Sher

The Bridges of Madison County was originally produced on Broadway by

Jeffrey Richards Stacey Mindich Jerry Frankel

Guttermann Chernoff, Hunter Arnold, Ken Davenport, Carl Daikeler, Michael DeSantis, Aaron Priest, Libby Adler Mages/
Mari Glick Stuart, Scott M. Delman, Independent Presenters Network, Red Mountain Theatre Company, Caiola Productions,
Rommel T. Dickinson, Ken Greiner, David Lancaster, Bellanca Smigel Rutter, Mark S. Golub & David S. Golub, Will Trice
with Warner Bros Theatre Ventures and The Shubert Organization in association with Williamstown Theatre Festival.

CAST

(in order of appearance)

Francesca	ELIZABETH STANLEY
Carolyn	CAITLIN HOULAHAN
Michael	JOHN CAMPIONE
Bud	CULLEN R. TITMAS
Marge	MARY CALLANAN
Charlie	DAVID HESS
Robert	ANDREW SAMONSKY
Marian/Chiara/State Fair Singer	KATIE KLAUS
Paolo	BRAD GREER
Ensemble	COLE BURDEN, CAITLYN CAUGHELL, BRAD GREER, AMY LINDEN, TRISTA MOLDOVAN, JESSICA SHERIDAN, TOM TREADWELL, J. MICHAEL ZYGO

SWINGS

LUCY HORTON, BRYAN WELNICKI

DANCE CAPTAIN

LUCY HORTON

UNDERSTUDIES

Understudies never substitute for players unless a specific announcement
for the appearance is made at the time of the performance.

for Francesca: LUCY HORTON, TRISTA MOLDOVAN;

for Robert: COLE BURDEN, BRAD GREER;

for Bud: TOM TREADWELL, J. MICHAEL ZYGO;

for Carolyn: CAITLYN CAUGHELL, AMY LINDEN;

for Michael: BRAD GREER, BRYAN WELNICKI;

for Marge: TRISTA MOLDOVAN, JESSICA SHERIDAN;

for Charlie: TOM TREADWELL, J. MICHAEL ZYGO;

for Marian/Chiara/State Fair Singer: CAITLYN CAUGHELL, AMY LINDEN.



The use of any recording device, either audio or video, and the taking of
photographs, either with or without flash, is strictly prohibited. Please turn off
all electronic devices such as cellular phones, beepers and watches.

CAST



Elizabeth Stanley



Andrew Samonsky



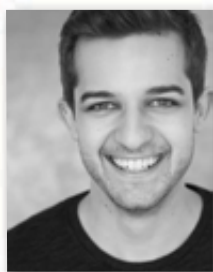
Cullen R. Titmas



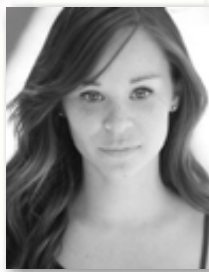
Mary Callanan



David Hess



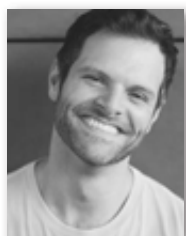
John Campione



Caitlin Houlahan



Katie Klaus



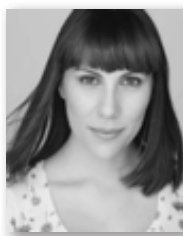
Cole Burden



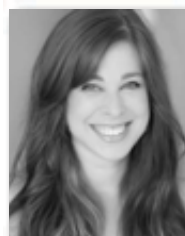
Caitlyn Caughell



Brad Greer



Lucy Horton



Amy Linden



Trista Moldovan



Jessica Sheridan



Tom Treadwell



Bryan Welnicki



J. Michael Zygo

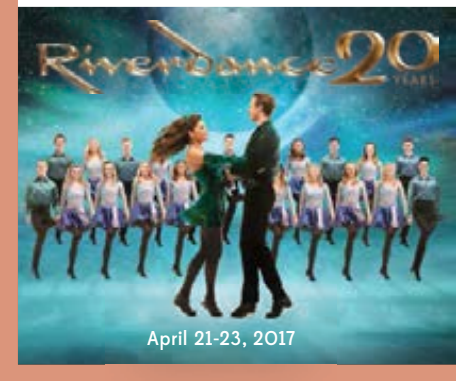
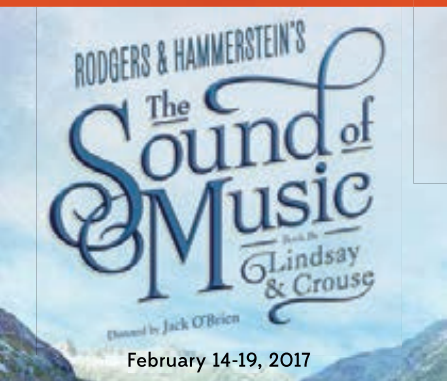
2016-17



SEASON



PLUS 2
BROADWAY
SPECIALS:



UP CLOSE AND *Unforgettable*

Our most treasured memories can emerge from experiences with a live performance. We are moved between moments of heightened drama to joyful delight, deep tension to euphoric wonder. More often, however, it is those with whom we share the performance—our friends, our family, a group outing, or an intimate night out—that make those memories so special. This season, we invite you to **share new experiences** with friends and loved ones as we bring the best of Broadway—even some from right here at home—to you in a way that is **up close and unforgettable**.

RESERVE YOUR SEATS TODAY!
8-SHOW SEASON TICKETS START AT \$180.50

TPAC.ORG/Broadway
615-782-6560

TPAC Box Office • Groups of 10 or more call 615-782-4060

Broadway Series
sponsored by



Event, date, time, guest artist, and repertoire are subject to change. Some shows contain mature content.

TPAC.org is the official online source for buying tickets to TPAC events.

SCENES & MUSICAL NUMBERS

in alphabetical order

ACT ONE

"To Build a Home"	Francesca and Company
"Home Before You Know It"	Bud, Michael, Carolyn and Francesca
"Temporarily Lost"	Robert
"What Do You Call a Man Like That?"	Francesca
"You're Never Alone"	Bud and Company
"Another Life"	Marian
"Wondering"	Robert and Francesca
"Look At Me"	Francesca, Robert, Company
"The World Inside a Frame"	Robert
"Something From a Dream"	Bud
"Get Closer"	Marge and Radio Singers
"Falling Into You"	Robert and Francesca

ACT TWO

"State Road 21/The Real World"	State Fair Singer, Michael, Carolyn and Company
"Who We Are and Who We Want to Be"	Robert, Francesca, Company
"Almost Real"	Francesca
"Before and After You/One Second & A Million Miles"	Robert and Francesca
"When I'm Gone"	Charlie, Bud, Company
"It All Fades Away"	Robert
"Always Better"	Francesca, Robert, Company

SETTING

Time: Four days in 1965 and the following years
Place: Winterset, Iowa

THERE WILL BE A 15-MINUTE INTERMISSION

ORCHESTRA

Music Director: Keith Levenson
Piano/Associate Conductor: Caleb Hoyer
Guitars: Daniel Erben, Justin Rothberg
Concertmaster/Violin: Michelle Maruyama
Violin: Rebekah Butler
Violin/Viola: Eugene Kaler and Jason Mellow
Cello: Audrey Snyder
Bass: David White
Drums/Percussion: Jeremy Lowe
Music Coordinators: Michael Keller and Michael Aarons

WHO'S WHO IN THE CAST

ELIZABETH STANLEY (*Francesca*) was last seen as the man-crazed anthropologist, Claire De Loone in the Broadway revival of *On the Town* (Drama Desk Nomination). Other roles originated on Broadway: Dyanne in *Million Dollar Quartet*, Allison in *Cry-Baby*, and April in the Tony Award-winning revival of *Company*. First National Tour: Kira in *Xanadu*. Off-Broadway: Gussie in the New York City Center, Encores! production of *Merrily We Roll Along* (PS Classics cast album) and The Nurse in *Hello, Again* (Transport Theatre Group, Drama League Award - Best Ensemble). TV: "The Affair," "Black Box," "Made in Jersey," "Fringe," "The Chappelle Show," and "PBS Great Performances - *Company*." Favorite regional roles: Regionally she has performed with Sundance Theatre Festival, Sacramento Music Circus, Pittsburgh CLO, Barrington Stage Co., Philadelphia Theatre Co., Rep. of St. Louis, O'Neill, La Jolla Playhouse, Pioneer Theatre Co., Cincinnati Playhouse. Ms. Stanley has been a soloist with numerous orchestras and also is celebrated for her cabaret acts. Graduate of Indiana University. www.elizabethstanley.net LIGHT!

ANDREW SAMONSKY (*Robert*) recently played Captain Phoebus in the American premiere of *The Hunchback of Notre Dame* at the Paper Mill and La Jolla Playhouse. Broadway: *The Mystery of Edwin Drood* (Neville), *Scandalous* (Kenneth Ormisten, original cast recording) and *South Pacific* (Lt. Cable, including the "Live From Lincoln Center" PBS broadcast). Off-Broadway: *Queen of the Mist* as Frank Russell (Drama Desk Award nomination, original cast recording) and Encores! productions of *Fiorello!* and *Merrily We Roll Along*. Original productions of *Somewhere in Time* (Richard, Portland Center Stage), *Tales of the City* (Beauchamp, ACT), *Little Miss Sunshine* (La Jolla Playhouse, Joshua) and Disney's *On the Record* (Original Cast Recording). He's a soloist with symphonies across the country. TV/Film: "Elementary," "Guiding Light," *The Ceiling Fan*, *Lyric Suite*.

CULLEN R. TITMAS (*Bud*). Broadway/Nat'l Tour: *The Last Ship*, *Billy Elliot* (Tony), *Avenue Q* (Nicky/Trekkie). Off-Broadway: *Avenue Q* (Nicky/Trekkie). Disney: *Finding Nemo the Musical* (original Marlin). NYC/Regional favorites: *Waitress* at the American Repertory Theater, *John and Jen*, *Aida* (Radames), *Footloose* (Ren), *Forever Plaid* (Sparky) and the title role in *Floyd Collins*. TV: "Person of Interest." Film: I've seen SO many good movies. Thanks to all at Telsey and Co., and to my dudes at CGF.

MARY CALLANAN (*Marge*) comes to *Bridges* from playing Rosie in the closing company of *Mamma Mia!* on Broadway, as well as the Vegas/National Tour. Broadway: *Annie*. Tours: *The Sound of Music*, *Big, Damn Yankees*. Regional: *Gypsy*, *Bloody Bloody Andrew Jackson*, *Les Misérables*, *Follies*, *Batboy*, *Sweeney Todd*, *Sunday in the Park*, *Chicago*, *Violet*. www.marycallanan.com

DAVID HESS (*Charlie*). Broadway: *Sweeney Todd* (Sweeney/Judge Turpin standby), *Annie Get Your Gun* (Frank Butler/Buffalo Bill standby). First National Tours: *Sweeney Todd* (Sweeney), *Ragtime* (Admiral Peary, Whitman). Carnegie Hall/Royal Albert Hall: *Kristina* (Daniel). Lincoln Center: *Dessa Rose* (Bertie). Regional theater: *Shenandoah* (Charlie; Jefferson Award), *Jane Eyre* (Rochester; San Francisco Bay Area Critics and Goodman Choice Awards), *Guys and Dolls* (Sky; Marlowe Award), *Grand Hotel* (Baron; Barrymore

nominee), *Sweet Charity* (Vittorio; Iden Payne nominee), *October Sky* (John Hickam; World Premiere), *The 39 Steps* (Directed; Hannay). Film: "New York Crossing," "Tennessee Nights." TV: "The Americans," "Elementary," "The Good Wife," "Royal Pains." Toured South Africa and Europe for Travel Channel's "Fantasy Rails for Millionaires" with his beautiful actress wife Joan Hess. www.DavidHess.info

JOHN CAMPIONE (*Michael*) is pretty dang excited to be a part of this awesome *Bridges* company! Local/Regional: *Moonshine: That Hee Haw Musical* (Gator), *Bonnie and Clyde* (Clyde, Column Award Nomination), *Les Misérables* (Enjolras), *Dog Sees God* (Beethoven), *Kiss of the Spider Woman* (Valentin - D Magazine "Critic's Pick"), *Hello Again* (Soldier), *Songs for a New World* (Man 2), *West Side Story* (Tony), *Titanic: The Musical* (Barrett), *Bloody Bloody Andrew Jackson*. Live/Recording: Kidd Kraddick in the Morning, Josh Groban's "All That Echo's World Tour." Thanks to Telsey+Co., my amazing crew at The Mine, Dale and Hank, and my love to Brooke. Johncampione.com

CAITLIN HOULAHAN (*Carolyn*). Cleveland, OH native happy to be with the *Bridges* family! NYC: *Parade in Concert* (Iola Stover). Regional: *Spelling Bee* (Olive), *Theory of Relativity* (Julie), *Carrie* (Carrie). TV/Film: "Peter Pan Live!" (Jane). Education: Baldwin Wallace Conservatory of Music grad. Special thanks to SMS. All her love to Ry, Bellatrix and the Houla-fam. XOXO Insta: @caithoula

KATIE KLAUS (*Marian/Chiara/State Fair Singer*). Broadway: *The Bridges of Madison County*, *Bonnie and Clyde*, *A Catered Affair*, *Inherit the Wind*, *The Times They Are A-Changin'*, *Follies* (City Center Encores!). Regional: *Queen Mother* (Goodspeed), *Band Geeks!* (Goodspeed/Human Race Theater). Film/TV: "Boardwalk Empire." CCM grad, proud AEA member, love to family, friends and husband Jeff.

COLE BURDEN (*Ensemble; u/s Robert*). The 25th Anniversary *Les Misérables* (National Tour), *Applause* (City Center Encores!), *Murder Ballad* (Studio Theatre), *The Secret Garden* (Capital Rep), *A Christmas Carol* (Arvada Center), *Legally Blonde* (Marriott Lincolnshire), *Grey Gardens* (Philadelphia Theatre Company), *Evita* (Mason Street Warehouse), *Red Eye Of Love* (Eugene O'Neill Center). Film/TV: *Beautiful Creatures*, *The Rainbow Bridge Motel*, "As The World Turns," "30 Rock." Thank You Chris and Cesar!!!

CAITLYN CAUGHELL (*Ensemble; u/s Carolyn, u/s Marian / Chiara / State Fair Singer*) is thrilled to be part of the *Bridges* story! Original cast of *Newsies* on Broadway (understudied and performed the roles of Katherine and Medda Larkin). Favorite performances: Orlando Shakespeare, Sacramento Music Circus, Kennedy Center, Hangar Theater, The York Theater. Studied vocal performance at NYU Steinhardt. www.caitlyнцаughell.com

BRAD GREER (*Ensemble, Paolo; u/s Robert, u/s Michael*). Off-Broadway/NY: *The Orion Experience*, *I Am Harvey Milk* (Lincoln Center). Regional: *Les Misérables* (Marius), *Legally Blonde* (Emmett), *Grease* (Johnny Casino, u/s Danny), *Joseph...Dreamcoat* (Simeon). Brad is also a proud member of The Broadway Boys, Broadway Inspirational Voices, and AEA. BFA Musical Theatre, University of the Arts.

LUCY HORTON (*Swing, Dance Captain; u/s Francesca*) is thrilled to be joining the *Bridges* family! National Tour:

Cats (Jellylorum). Favorite regional credits: *Mary Poppins* (Winifred Banks), *Cats* (Jelllorum, u/s Grizabella), *Annie* (Grace), *Guys and Dolls* (Sarah), *Boys from Syracuse* (Adriana), *Into the Woods* (Florinda). Thanks to Judy Boals, Inc! Love and thanks to Mum, Dad and Jo. Ruti loves Teb! www.LucyHorton.com

AMY LINDEN (*Ensemble; u/s Carolyn, u/s Marian / Chiara / State Fair Singer*). Select NYC theatre/regional: *Cheer Wars* (dir. Hunter Foster), *Show Choir! The Musical* (NYMF), *Rory O'Malley's Pub Crawl* (MD Stephen Oremus), *54 Below*, Lincoln Center, *Ars Nova*, *NAMT*, *Weston Playhouse*, the *Armory Theatre*. Thank you to family, Telsey & Co. and Whole Artist Management, with dedication to Leslie Varnick (the world's greatest vocal coach) and Josh (the world's greatest husband). Indiana University Jacobs School of Music graduate. Cleveland, OH native. Tweets/'Grams @amyazing84 www.amy-linden.com.

TRISTA MOLDOVAN (*Ensemble; u/s Francesca, u/s Marge*). Broadway/National Tour: *The Phantom of the Opera* (Christine), Irving Berlin's *White Christmas* (Betty Haynes). Regional: *Cat on a Hot Tin Roof* (Maggie), *Arkansas Rep; 1776* (Abigail), *Pittsburgh Public; Sense and Sensibility* (Miss Grey), *Denver Center; Headliner, Omaha Symphony*. TV: "Celebrity Ghost Stories," "Guiding Light," "All My Children." Baldwin Wallace Alum.

JESSICA SHERIDAN (*Ensemble; u/s Marge*). Broadway/ NYC: *Showboat* (NY Philharmonic concert series), *Sister Act*, *Follies*, *Mary Poppins*, *Les Misérables*, *Radio City Christmas Spectacular*. National tours: *The Producers*, *Beauty and the Beast*, *How to Succeed...*, *Footloose*. Film: *The Producers*, "Liza Live from Radio City." Award Nominations: *Ovation Award* (Lead Actress in a Musical), *LA Weekly Award* (Musical Performance).

TOM TREADWELL (*Ensemble; u/s Bud, u/s Charlie*). Broadway: *Annie*. National Tours: *Ragtime*, *Cats*, *Company*. Regional: *Paper Mill Playhouse*, *Yale Repertory Theatre*, *Theatre Under The Stars*, *Portland Center Stage*, *Goodspeed-at-Chester*, *Bard SummerScape Festival*, *Sacramento Music Circus*. Film/TV: *Beijing, New York*, "The Knick"(Thomas Edison), "30 Rock," "Law and Order: SVU" "The Bronx Is Burning," "Onion Sports Dome."

BRYAN WELNICKI (*Swing; u/s Michael*) is thrilled to be a part of the *Bridges* family! National Tours: *Peter and the Starcatcher* (Boy) and *The Addams Family* (Lucas Beineke). Regional credits include *Sweeney Todd* (Tobias Ragg) and *The Addams Family* (Lucas Beineke). Proud Graduate of NYU Steinhardt under Michael Ricciardone. www.bryanwelnicki.com

J. MICHAEL ZYGO (*Ensemble, u/s Bud, u/s Charlie*) was an original cast member/musician of Tony Award-winning *Once on Broadway* (*Emcee u/s Guy/Billy, Dance Capt., Assoc. Cond.*) and featured on the Grammy Award-winning Cast Album. Off Broadway: *Once* (NYTW), *Man of Rock* (NYMF). Tours: *Rock of Ages - 1st Nat. (Will Parker)*. Film/TV: "Unforgettable," *Rock of Ages (featured dancer)*, *Tony Awards 2012, 2013 (opening line!)*. He is also a singer/songwriter. For Jill & Maizy. www.thezygos.com

MARSHA NORMAN (*Book*) won a Pulitzer Prize for her play *'night, Mother* and a Tony Award for her book of *The Secret Garden* on Broadway. She also wrote the book for *The Color Purple*. Ms. Norman is co-chair of the Playwriting Department at Julliard and vice president of the Dramatists Guild of America. Her other plays include *Getting Out*, *Traveler in the Dark*, *Sarah and Abraham*, *Trudy Blue*, and

Last Dance. Her published work includes *Four Plays, Vol. I: Collected Plays of Marsha Norman* and a novel, *The Fortune Teller*. She has numerous film and TV credits, Grammy and Emmy nominations and awards from the National Endowment for the Arts, the Rockefeller Foundation, the American Academy and Institute of Arts and Letters and the Fellowship of Southern Writers. She is a native of Kentucky who lives in New York City and Great Barrington with her two children.

JASON ROBERT BROWN (*Music and Lyrics, Orchestrations*) has won three Tony Awards for his groundbreaking work as a composer, lyricist and orchestrator. His emotionally incisive, ferociously energetic and deeply human scores for *Honeymoon In Vegas*, *The Bridges of Madison County*, *Parade*, *The Last Five Years* (now a feature film starring Anna Kendrick), *13* and *Songs for a New World* have brought his unique voice and highly personal songs to stages and cinemas all over the world. Jason also tours as a singer and pianist, and has recorded two solo albums: *Wearing Someone Else's Clothes* and *Jason Robert Brown in Concert*. www.jasonrobertbrown.com

ROBERT JAMES WALLER (*Novelist*) grew up in Rockford, Iowa, where his mother was a housewife and his father operated a small produce business. He was educated at the University of Northern Iowa and Indiana University, where he received his doctorate. He taught management, economics and applied mathematics courses at the University of Northern Iowa from 1968 to 1991. He worked for more than 20 years as a musician (guitar, flute, singer/songwriter) playing nightclubs and concerts, and is a serious photographer. Among his publications is the best-selling novel, *The Bridges of Madison County*, with 12 million copies in print in 40-plus languages, and which was adapted into a major motion picture starring Meryl Streep and Clint Eastwood. He has published a total of seven novels, with sales of more than 17 million copies. Robert lives on a small farm in the Texas Hill Country and pursues his various interests, including economics, mathematics, writing and music.

BARTLETT SHER (*Director*) is Resident Director of Lincoln Center Theater, where he has directed *The King and I*, *Golden Boy* by Clifford Odets (Tony Nomination), *Blood and Gifts* by J.T. Rogers, the new musical *Women on the Verge of a Nervous Breakdown* by Jeffrey Lane and David Yazbek, August Wilson's *Joe Turner's Come and Gone* (Tony Award nomination), Rodgers and Hammerstein's *South Pacific* (2008 Tony Award, *South Pacific* went on to Australia where it was the most successful show in the history of the Sydney Opera House), *Awake and Sing!* by Clifford Odets (Tony Award nomination) and *The Light in the Piazza* by Craig Lucas and Adam Guettel (Tony Award nomination).

TYNE RAFAELI (*Tour Direction*) was born in London and trained at Guildhall and Columbia University. She has directed classics, new plays and musicals in London and the US and her work has been seen at Classic Stage Company, New York Stage and Film, Julliard, Williamstown, American Players Theater, Idaho Shakespeare Festival and PlayPenn, among others. She has served as an associate on *The King and I* (LCT), *Women on the Verge...* (West End), *The Bridges of Madison County*, *Golden Boy* and *Fiddler on the Roof* (all Broadway). Upcoming projects include *Othello* (CSC), *Eurydice* by Sarah Ruhl (APT), and *Loves Labor's Lost* (ISF).

DANNY MEFFORD (*Movement*). Broadway: *Bloody Bloody Andrew Jackson* (Astaire and Lortel nominations, Best Choreography). Off-Broadway: *Fun Home*, *Good Person*

Continued on page 39

It's a new day. Time to be bold.

The 2016 C300.



When it comes to design and performance, the new Mercedes-Benz C300 is exceptionally bold. And like you, it thrives on the challenges and changes of an ever-changing world. So go ahead—be bold. Reach past your own boundaries and discover new possibilities in the new 2016 C300.

2016 C300. Shown with optional equipment. See dealer for details. ©2015 Authorized Mercedes-Benz Dealers.

For more information, call 1-800-FOR-MERCEDES, or visit MBUSA.com.

Mercedes-Benz
of Nashville



630 Bakers Bridge Avenue Franklin, TN 37067 | 800 - 784 - 0289



Community Banking
SINCE 1906

FB
FirstBank
www.FirstBankOnline.com

FDIC

Perhaps you've just finished your undergraduate degree or are already established in your job, and you are just not happy with where you are in your career. Give us a chance to help you find your next. With the second-largest graduate enrollment of any private university in Nashville, Lipscomb students experience graduate studies that come with more than just a piece of paper.

At Lipscomb, we'll first work with you one-on-one to help you select the right degree to make a difference in your life and in your future. You might even be surprised to learn that your undergraduate degree can open many new opportunities for a master's in areas you never thought possible...but dream of.

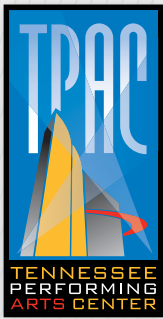


Courses are relevant to the job market and taught by a faculty who not only care about you getting your name on a diploma, but making a name for yourself with it. And as many students tell us, our unique mixture of academics, faith and ethical perspectives, and community partnerships do more for their leadership skills than they ever thought possible.

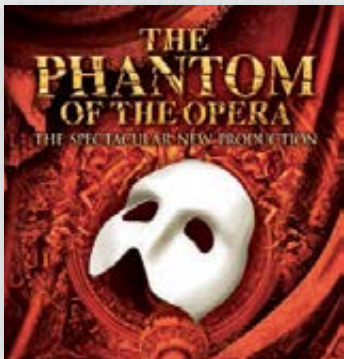
Find what you need to make a difference in your next step. Contact us at 615.966.6287 or graduatestudies@lipscomb.edu. Let's talk about your plans, ideas and dreams. It's what we do best, to ensure you get to your best. **gradstudies.lipscomb.edu**

SOMETIMES WHERE YOU WANT TO GO
IS WHERE YOU DIDN'T THINK YOU COULD.

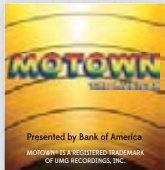




UPCOMING SHOWS INCLUDE:



March 9-20



February 16-21



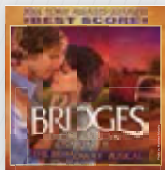
April 13



April 15-16



April 26 – May 1



May 10-15



May 31 – June 5



June 7-12



June 15

TPAC.ORG
615-782-4040

TPAC Box Office at 505 Deaderick Street



Pictured: Ensworth presents the high school debut of "Ring of Fire"

In Search of Truth

Ensworth is a kindergarten through twelfth grade, coeducational independent school. The School promotes academic excellence and inspires students to be intellectually curious, to **use their talents to the fullest**, to be people of integrity, and to be contributors to society.

EXPLORE **ensworth.com**



Belong.

BLAKEFORD
AT GREEN HILLS
B

BLAKEFORD
AT HOME
B

LiveWell
BY BLAKEFORD
B

THE PREMIER PROVIDER OF SENIOR LIVING
OPTIONS IN THE GREATER NASHVILLE REGION

Call 615-665-9505 to schedule your private tour,
or visit **Blakeford.com** for more information



11 Burton Hills Boulevard, Nashville, TN 37215





WE HIT EVERY NOTE

At Metova we build mobile and web solutions for any sized company. From Fortune 500 companies to start-ups, we deliver top of the line technology and go beyond expectations so you can accomplish your goals.

WE HOPE YOU ENJOY THE SHOW

WWW.METOVA.COM

The city's
hottest spots,
all under
one roof.



Discover a variety of culinary delights and escape to one of the only full-service spas downtown. Connected to the Country Music Hall of Fame and Museum and adjacent to the Music City Center. We're ready for you Nashville — like nothing you've ever experienced before.



Inspiring
creative
discoveries
in art
and life



2015-16 Production of Shakespeare's A Midsummer Night's Dream

MAKE IT MEMORABLE. MAKE IT GRAND.

Upgrade to elegance with Grand Avenue. Whether you are headed to opening night or date night, our professionals will meet your travel needs and exceed your expectations.

Have confidence in Grand Avenue's trained chauffeurs as you arrive in style in a one-of-a-kind vintage roadster, an understated sedan or a limousine.



GRAND AVENUE™

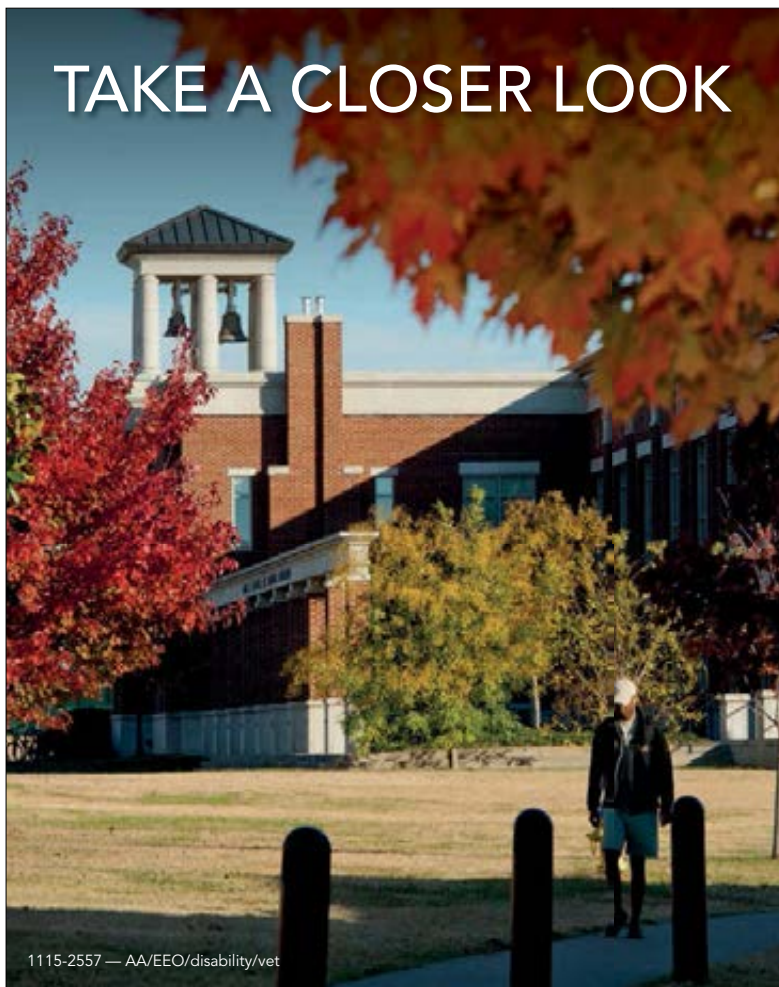
BE DRIVEN

Call us today at 615.714.5466 or toll-free at 866.455.2823
or visit GrandAvenueWorldwide.com



GRAND 26683 | PAM | 7/15

TAKE A CLOSER LOOK



MTSU HONORS COLLEGE

An Ivy League Experience

Tennessee's first public Honors College fosters the academic excellence and nurturing environment of a small, select, liberal arts college within the setting of a major university. Our students have won Goldwater Scholarships, traveled abroad on Fulbright Scholarships, and earned spots on the *USA Today* All-American Academic Team. Take a closer look.

**MIDDLE
TENNESSEE**
STATE UNIVERSITY

www.mtsu.edu/apply

TEXAS de BRAZIL

CHURRASCARIA
Brazilian Steakhouse

Carving a New Experience



16 flame-grilled meats
served tableside

50-item gourmet salad area

Ultimate caipirinhas,
award-winning wines,
and much more

\$10 OFF

Nashville

210 25th Ave. N. Suite 110

615.320.0013

Serving Dinner Nightly

*Must mention ad to server. Valid up to 8 people per table/reservation. Not valid on restaurant holidays, with other offers or Fridays or Saturdays. Expires 6/30/16.

Receive deals at TexasdeBrazil.com

AWARD
WINNING
VIDEO
PRODUCTION



g+ ★★★★★
REVIEWS

GET YOUR **SHOOT** TOGETHER.

At KellyGirl Video, we only
shoot corporate video.

Our unique approach results
in a strategic, effective product
that gives you the very best
value for your budget.

kellygirl

VIDEO

CORPORATE VIDEO PRODUCTION

"Kelly absolutely captured the essence of the business proposition and effectively conveyed the value add of doing business with CapStar."

- Claire Tucker, President & CEO, CapStar Bank

STUDIO NOW OPEN
IN THE MARATHON BUILDING

615.414.9690
www.kellygirlvideo.com



EMPOWERING YOUR SUCCESS

Solutions to Power Your Business

We help modern professionals become more successful with managing paper & digital information, maintaining vital information systems & empowering businesses with leading printing technologies.



Workflow Solutions

Boost productivity with digitized data, automated workflows & instant access to information while maintaining security & compliance.



Document Management

Organize, store & manage documents & data with document management solutions.



Office Equipment

Produce superior documents & facilitate secure & efficient digital workflows with industry-leading multifunctional printing devices.



Managed Print Services

Gain visibility & control costs of desktop printers. MPS includes everything but the paper, for one flat fee.

Additional Solutions: Wide Format Printing Production Printing • 3D Printing

For technology that powers your business, call your local RJ Young representative at 800.347.1955 or visit us online at RJYoung.com.



It ain't
over 'til the
HOT lady
sings!

STRAUSS
die fledermaus
APRIL 2016 • TPAC
A madcap romcom with a
gorgeous waltz of a soundtrack!

Tickets from \$19!
nashvilleopera.org
615.832.5242

**NASHVILLE
OPERA**

As one of the very first social enterprises, Goodwill has been helping people, communities and the environment since 1902.

Goodwill took root in 1902 when a minister recognized a need and helped people in his community find meaningful work opportunities. The Rev. Edgar J. Helms worked as a missionary in the slums of Boston. He would gather burlap sacks and visit the wealthier residents in his community, asking for items they no longer needed or wanted. After collecting the donations, the Rev. Helms took the items to his church where people, in need of work, repaired what was broken and then sold the used goods. The workers found success through their own efforts, and with work they gained the dignity that comes with earning a paycheck. The Goodwill movement swept the country and, in 1957, Goodwill Industries of Middle Tennessee, Inc. was formed.

The Social Enterprise Model at Goodwill

Our operation model is unique because it doesn't start with an "ask." It starts with a local service that addresses a need — where to donate used goods and where to find affordable used goods — and then transforms the value of these transactions into verifiable social impact for local communities, individuals and the environment. The revenue generated from the sale of used goods enables Goodwill Industries of Middle Tennessee to assist tens of thousands of people each year with training and job placement services at its 29 Goodwill Career Solutions Centers.



See the impact your donations are making
View our annual report while you wait for the show to begin:
giveit2goodwill.org/annualreport





No one cares for your business quite like family.

-  Audit, Tax and Advisory
-  Staffing Solutions
-  Technology Solutions
-  Employment Partners
-  Investment Advisors
-  Information Security
-  Physician Business Solutions
-  Business Process Solutions

LBMC elevates businesses to new heights. We provide a full spectrum of professional services using real-world expertise. We leverage our vast resources to save you time, energy and expense.

The LBMC Family of Companies are comprised of more than 450 experts dedicated in their fields.

Learn the many ways we can enhance your business at lbmc.com.



Nashville 615.377.4600 | Knoxville 865.691.9000 | Chattanooga 423.756.6585

Applications Accepted Year-Round
PREKINDERGARTEN THROUGH GRADE 8



Christ the King
School

615.292.9465

www.cksraders.org

A ministry of



*"There's something
special about this place."*

UNDERSTANDING YOU

There's something to be said for developing a relationship with a bank whose people live and work in your community. We get to know you. We understand your individual needs. Whether it's a checking account, a home improvement loan, a mortgage, or a small business loan, we provide solutions that are right for you.



Understanding You.

West End | Green Hills | Goodlettsville
Hendersonville | Hermitage | Cool Springs
615.340.3000 | renasantbank.com



All loans subject to credit approval.



SEE HOW THE MUSIC MOVES YOU.

Belmont's School of Music provides training and mentorship to aspiring musicians from across the country so that they can use their gifts to engage and transform the world. See the next class of rising stars at one of many performances this spring. Visit belmont.edu/music or call 615.460.6408 for tickets or more information.



1.27.16	<i>Jazz Piano Concert Series with Sullivan Fortner</i>
2.1.16	<i>Commercial Music Showcase</i>
2.23.16	<i>World Music Concert Series with The Fretless</i>
3.21.16	<i>Classical Performers</i>
3.28–4.2.16	<i>Belmont Jazz Festival</i>
4.1–4.10.16	<i>The Addams Family</i>
4.16.16	<i>The President's Concert</i>





We zipline.
We volunteer.

We hang glide.

We mentor.

We hot air balloon.

We cultivate. **We innovate.**

We celebrate life.

We care for others.

"You are never too old to set another goal or to dream a new dream." – C.S. Lewis

That's FiftyForward!

Whether you are seeking adventure, purpose or peace of mind, FiftyForward is there for you. We treasure your gifts, talents and expertise. We recognize your challenges. Let us support you with our nearly 60 years of experience.

We are the only nonprofit that offers such a wide range of resources and activities for adults 50 and older. From our seven lifelong learning community centers in Davidson and Williamson counties for active adults to our comprehensive services to support independence for those needing assistance ...
Learn what the buzz is all about!

**Fifty
Forward®**

Contact us!

(615) 743-3400 or www.fiftyforward.org



#FiftyForwardFirst #CareTeam #CardCrusaders
#ChampionOthers #TheLarryKeetonTheatre



Our goal at Hope Clinic is to provide quality care while shining hope into seemingly hopeless situations. Join us at one of our 2016 events! 100% of the proceeds benefits the mission of Hope Clinic.

Hope for the Future Gala Mar 8
Smoke on the Water May 1
Yoga Brew at Jackalope Aug 27
Golf Tournament Sept 12
Women of Hope Sept 22
Cider Carols Dec 1

HOPE
CLINIC
for women

1810 Hayes Street, Nashville TN 37203
HopeClinicForWomen.org | 615.321.0005



Ezell-Harding
CHRISTIAN SCHOOL



Take hold of your child's future.

Exemplary Academics • Family and Faith Based

Diverse Student Body • 1:1 Technology in the classroom with

Google Chromebooks www.ezellharding.com

Jason Tucker Photography



*Wants to spend more time with his namesake.
And less time figuring out how.*

GET THE SERVICES OF A PROVEN TEAM FOR YOUR INDIVIDUAL FINANCIAL GOALS.

FTB Advisors offers a more personal approach to wealth management than you'll find on a computer or smartphone. We offer individualized strategies in investments, financial planning, trust and insurance services with your particular goals in mind. Discover what a team of dedicated financial advisors can do for you now. And into the future.

START A CONVERSATION AT FTBAdvisors.com

511 UNION STREET
SUITE 400
NASHVILLE, TN 37219

2214 ELLISTON PL
SUITE 304
NASHVILLE, TN 37203

501 CORPORATE CENTRE
SUITE 150
FRANKLIN, TN 37067



Insurance Products, Investments & Annuities: Not A Deposit | Not Guaranteed By The Bank Or Its Affiliates | Not FDIC Insured | Not Insured By Any Federal Government Agency | May Go Down In Value Insurance Products and Annuities: May be purchased from any agent or company, and the customer's choice will not affect current or future credit decisions.

FTB Advisors is the trade name for wealth management products and services provided by First Tennessee Bank National Association ("FTB") and its affiliates. Financial planning and trust services provided by FTB. Investment management services, investments and annuities available through FTB Advisors, Inc., member FINRA, SIPC, and a subsidiary of FTB. Arkansas License # 416584. Insurance products available through FTB Advisors Insurance Services, Inc. ("FTBIS"), a subsidiary of FTB. Arkansas License # 247414. In some states, insurance products and annuities are provided by First Horizon Insurance Services, Inc. ("FHIS"), a Tennessee corporation, and a subsidiary of FTB. The principal place of business of FHIS is 165 Madison Ave., Memphis, TN 38103. California License # OD12174. FTBIS, FTB Advisors, Inc., and FHIS may transact insurance business or offer annuities only in states where they are licensed or where they are exempted or excluded from state insurance licensing requirements. FTB Advisors does not offer tax or legal advice. You should consult your personal tax and/or legal advisor concerning your individual situation.

©2016 First Tennessee Bank National Association. www.firsttennessee.com

EXECUTIVE PROTECTION DOGS

UN-FAIR ADVANTAGE

Protecting Your Greatest Assets.

P. 888.580.9893
www.NashvilleK9.com

Nashville
K9[®]
When Seconds Count...

MOVIES AT THE SCHERMERHORN



JUNE 12



JUNE 17



JUNE 24



Nashville
Symphony

615.687.6400

NashvilleSymphony.org

NOW PLAYING ★ Nashville.com[®]

Visit NowPlayingNashville.com for Middle Tennessee's most comprehensive event guide.

THEATER ★ MUSIC ★ DANCE
FAMILY FUN ★ MORE

DISCOUNT TICKETS and EXCLUSIVE GIVEAWAYS
are a click and tap away!



An initiative of The Community Foundation of Middle Tennessee

Always something* new to see.

*something includes, but not limited to, art, film, music and exotic autos.



2016 exhibitions include works by Goya, Rubens and Renoir; Italian automobiles; Soviet photography and film; iconic pottery, textiles and jewelry; Samurai arms and armor; and much more.

Visit fristcenter.org/art to see a complete schedule of exhibitions. Consider becoming a Frist Center member and enjoy unlimited visits for a year.

THE FRIST
CENTER FOR THE VISUAL ARTS

919 BROADWAY | DOWNTOWN NASHVILLE

1970 Lancia Stratos HF Zero. Collection of XJ Wang. Image © 2015 Peter Harholdt



GAYLORD
SPRINGS®
GOLF LINKS

TEE UP YOUR NEXT EVENT.

Social Events • Weddings • Golf Outings • Complimentary Parking
Corporate Events Retreats & Team Building • GaylordSprings.com



Faith *and* Science

Can a cancer diagnosis make you take a leap of faith?

At age 38, Caroline—wife, mother and nurse—was diagnosed with Stage IV ovarian cancer. But instead of letting it take control of her life, she saw it as a second chance to truly live.

She entrusted us with her life 17 years ago and has been jumping (sometimes from 13,000 feet) at every opportunity since.

Nothing *shall be impossible.*

To schedule a screening, call 615-284-CARE or visit STHealth.com/cancer.



Saint Thomas
Cancer Care

of *Szechwan, Love's Labour's Lost, February House, Melancholy Play, Dance Dance Revolution*. Directing: *Becoming Liv Ullmann* (NY Fringe), *Wasted* (Ars Nova) and *The Maids*. Education: MFA in acting, Brown/Trinity; BS, University of Evansville.

MICHAEL YEARGAN (*Scenic Design*). Theatre credits include designs for regional theatres in America, London's West End and numerous Broadway and off-Broadway productions including *The Light in the Piazza*, *South Pacific* (Tony and Drama Desk Awards), *Awake and Sing*, *Cymbeline*, *Joe Turner's Come and Gone*, *Blood and Gifts* and this season's *Golden Boy*. Yeargan's extensive international opera credits include projects for San Francisco Opera, Chicago Lyric, Royal Opera House, La Scala, the Vienna Staatsoper and the opening night production of *L'Elisir d'Amore* at the Met. He is a professor and co-chair of the Stage Design Department at the Yale School of Drama.

CATHERINE ZUBER (*Costume Design*). Broadway: *Fiddler On the Roof*, *The King and I* (Tony Awards); *Golden Boy*; *How to Succeed in Business; Born Yesterday*; Edward Albee's *Seascape*; *Dinner at Eight*; *Twelfth Night* (Tony Nominations); *The Royal Family*; *South Pacific*; *The Coast of Utopia*; *The Light in the Piazza*; *Awake and Sing!* (Tony Awards); *Macbeth*; *Joe Turner's Come and Gone*; *Women on the Verge...*; *Doubt*; among others. Off-Broadway: B&M: *The Bridge Project* 2009/10/11. TV: "The Sound of Music" NBC/Universal. Graduate: Yale School of Drama.

DONALD HOLDER (*Lighting Design*). Broadway: *Big Fish*, *Bullets Over Broadway*, *South Pacific* (2008 Tony Award), *The Lion King* (Tony, Drama Desk, Outer Critics Circle Awards, Paris Moliere Award), *Golden Boy*, *Ragtime*, *Movin' Out*, *Les Liaisons Dangereuses*, *Gem of the Ocean*, *A Streetcar Named Desire*, *Juan Darien* (all Tony nominated), *Spiderman – Turn Off the Dark*, *Sisters* (Gotham Opera and Philadelphia Opera Company), *Moby Dick* (World premiere: Dallas Opera). Television: "Smash" Seasons One and Two. Education: Yale School of Drama.

JON WESTON (*Sound Design*). Broadway: *Big Fish*; *How to Succeed...*; *13*, *The Musical*; *Les Misérables*; *The Color Purple*; *The Glass Menagerie*; *Caroline, or Change* (AUDELCO Award); *Nine*; *Imaginary Friends*; *Thoroughly Modern Millie*; *The Green Bird*; *It Ain't Nothin' But the Blues*; *On the Town*; *Company* in concert at Lincoln Center; *Man of La Mancha* (Starring Raul Julia and Sheena Easton). Off Broadway and Regional: *The Last Five Years*; *Death Takes a Holiday*; *In Transit*; *Dangerous Beauty*; *Bloodsong of Love: The Rock 'N' Roll Spaghetti Western*; *Wonderland* (Alley and Tampa Bay Performing Arts Center); *Parade* (Mark Taper Forum dir. by Rob Ashford); *The First Wives Club* (dir. by Francesca Zambello); *Rooms...a rock romance* (dir. by Scott Schwartz); *A Little Night Music* (L.A. Drama Critics Award); *Himself & Nora*; *The Thing About Men*; *tick, tick...BOOM!*; *Bright Lights*, *Big City*; *Family Guy*, *Live!* (Carnegie Hall).

MIKIKO SUZUKI MACADAMS (*Additional Set and Adaptation*). As a designer, her work has been seen at Epic Theater Ensemble, Working Theater, Intar Theatre, Ensemble Studio Theatre, Syracuse Satge, Oregon Shakespeare Festival, Long Wharf Theatre, Seattle Repertory Theatre, Intiman Theatre, Actors Theatre of Louisville, Honolulu Theatre for Youth, PlayMakers Repertory Company, Yale Repertory Theatre, Cincinnati Playhouse, Opera Theatre of St. Louis, among others. Internationally: Biwako Hall (Otsu), Nissay Theatre, Nikikai (Tokyo), Aichi Triennale (Nagoya). As an associate designer, Broadway credits include: *Fiddler on the Roof*, *The King and I*, *The Bridges of Madison County*,

Golden Boy, *That Championship Season*, *Women on the Verge of a Nervous Breakdown*, *Next Fall*, and *Joe Turner's Come and Gone*.

DAVID BRIAN BROWN (*Hair & Wig Design*). Broadway-Highlights: *Curious Incident...*, *If/Then*, *Macbeth*, *The Nance*, *Death of a Salesman*, *Follies*, *Sister Act*, *Arcadia*, *A Steady Rain*, *Shrek*, *The Little Mermaid*, *Legally Blonde*, *Spamalot*, *Tarzan*, *Dirty Rotten Scoundrels*, *Fiddler on the Roof*, *Nine*, *Gypsy*, *Sweet Smell of Success*, *The Invention Of Love*, *Aida*, *The Iceman Cometh*, *Chicago*, *Sideshow*, *Steel Pier*. Film credits: *Peter Pan*-Live NBC, *Sound of Music*-Live NBC, *It's Complicated*, *Angels In America* (Emmy Nominated), *Too Wong Foo...*

TOM MURRAY (*Music Supervisor*). Broadway: *Honeymoon In Vegas*, *The Bridges of Madison County*, *Nice Work If You Can Get It*, *A Little Night Music*, *Sunday In The Park With George*; London: *A Little Night Music* (Chocolate Factory, West End), *Parade* (Donmar), *Pacific Overtures* (Donmar); Premieres: *The Last Five Years* (New York, London); *The Glorious Ones* (Ahrens/Flaherty), *Loving Repeating* (Flaherty), *Saturday Night* (US premiere); *Parade* (US tour), *My Fair Lady* (McCarter), *Pacific Overtures* (Chicago Shakespeare), *Sweeney Todd*, *Passion*, *Anyone Can Whistle* (Ravinia Festival, Chicago). Recipient of four Joseph Jefferson Awards (Chicago) and one Barrymore Award (Philadelphia) for music-direction. Future: *Anastasia* (Ahrens/Flaherty).

MICHAEL KELLER AND MICHAEL AARONS (*Music Coordinator*). Broadway: *School of Rock*, *The Color Purple* (2015), *Hamilton*, *Amazing Grace*, *Honeymoon in Vegas*. Upcoming Broadway: *Gotta Dance*, *Spongebob*. Current & Future Tours: *Kinky Boots*, *If/Then*, *The Bridges of Madison County*.

KEITH LEVENSON (*Music Director*). Broadway and National Touring productions of *Annie*, *The Best Little Whorehouse in Texas* (with Ann-Margret), *Grease*, *Jesus Christ Superstar*, *The Who's Tommy*, *Annie Warbucks*, *Big River*, *Chess*, and *Dreamgirls*. As a Music Supervisor/Orchestrator/Arranger: National Tours of *Jekyll and Hyde*, *Love Janis*, *Scoundrels*, *Camelot*, *Joseph...and Franco* Dragonese's *Kung Fu Panda & India!* As a composer/lyricist/librettist work includes: *Starcrossed with Jeanine Tesori and Alexa Junge*, *Winchell* with Martin Charnin and Broadway's *The Flowering Peach*. TV appearances include "The Tonight Show with Jay Leno," "The Late Show with David Letterman," "The 1997 Tony Awards," and "The Wizard of Oz: In Concert at Avery Fisher Hall featuring Jewel," "Nathan Lane," "Roger Daltrey," "Jackson Browne," "Joel Grey," "Debra Winger," "Natalie Cole" and "The New York Philharmonic." Keith serves as principal conductor and arranger of the British Rock Symphony and has worked with The Who, Kiss, Yes, Alice Cooper, Peter Frampton, and Meat Loaf. He is Tour Supervisor of *Annie*, Musical Supervisor of *Flashdance* and creator of *Broadway the Big Band Years*. All thanks to JRB, Tom Murray, et al, for the amazing opportunity. It couldn't have come at better time.

THE BOOKING GROUP (*Tour Booking*) is Broadway's premiere booking agency representing more than 18 Tony Award-winning best musicals and plays since its inception in 1996. TBG has booked several long-running tours such as the "Best Musical of the Century" *The Book of Mormon*, the most Tony Award-winning musical in history Mel Brooks' *The Producers*, the worldwide hit *Mamma Mia!* and the groundbreaking musical *Rent*. TBG is committed to bringing the best of Broadway to North America and beyond.

TELSEY + COMPANY (Casting). Broadway/Tours: *Fiddler on the Roof*, *The Color Purple*, *China Doll*, *Misery*, *Allegiance*, *On Your Feet!*, *Sylvia*, *Spring Awakening*, *Hamilton*, *Something Rotten!*, *An American in Paris*, *Finding Neverland*, *The King and I*, *Hand to God*, *Kinky Boots*, *Wicked*, *The Bridges of Madison County*, *If/Then*, *Love Letters*, *Newsies*, *Pippin*, *Motown*, *Rock of Ages*, *Million Dollar Quartet*. Off-Broadway: Atlantic, MCC, Second Stage, Signature. Regional: A.R.T., La Jolla, New York Stage and Film, Old Globe, Paper Mill, Williamstown. Film: *Fun House*, *Tallulah*, *Ithaca*, *The Intern*, *Ricki and the Flash*, *Focus*, *The Last Five Years*, *Song One*, *A Most Violent Year*, *Into the Woods*. TV: "Flesh and Bone," "Masters of Sex," commercials. www.telseyandco.com

TYPE A MARKETING (Marketing & Press) is an independent, full-service marketing company specializing in Broadway and national tours. Broadway: *American Psycho*, *The Color Purple*, *Kinky Boots*, *Les Misérables*, *The Phantom of the Opera*, *Sylvia* and *Tuck Everlasting*. Tours: *The Bridges of Madison County*, *Bullets Over Broadway*, *Cabaret*, *Dirty Dancing*, *Irving Berlin's Holiday Inn* and *Vocalosity*. typeamktg.com

STEPHEN GABIS (Dialect Coach). Selected Broadway/Off-Broadway: *Tribes*, *Magic/Bird*, *Look Back in Anger*, *Man and Boy*, *Bluebird*, *Through a Glass Darkly*, *Lombardi*, *The 39 Steps*, *A View From the Bridge*, *Lend Me a Tenor*, *Port Authority*, *Memphis*, *Jersey Boys*, *Coram Boy*, *Brief Encounter*, *The Lieutenant of Inishmore*, *Doubt*. Regional: *Educating Rita* (Huntington), *Shirley Valentine*, *The Train Driver* (Long Wharf). Selected Film/TV: "Prime Suspect," "Boardwalk Empire," *Salt*, *Across the Universe*, *Bernard and Doris*.

MELISSA CHACÓN (Production Stage Manager) recently stage managed *The Iceman Cometh* at BAM with Nathan Lane and Brian Dennehy. National Tours: *We Will Rock You*, *Billy Elliot*, *Contact* and *Rent*. Off-Broadway: *Avenue Q*. Other Credits include: *Les Misérables*, *Shida*, *1001*, *Pinkalicious*, *Jimi & Mr. B*, *Circle of Friends*, *The American Girls Revue*, *As You Like It*, *Much Ado About Nothing*, *The Tempest* and *The School for Husbands*. She earned her MFA in Stage Management from Rutgers University's Mason Gross School of the Arts.

JOSHUA PILOTE (Stage Manager). Broadway/Tours: *Other Desert Cities*, *Jersey Boys*, *Rent*, *Mamma Mia!*, *Dirty Dancing*, *Wicked*. Off-Broadway: *Angels in America* (Signature), *Forbidden Broadway*, *Frankenstein*, *I Love You... Now Change!*, *Little Me* (City Centre Encores!). Other: *The Little Mermaid* (TUTS), *Blue Man Group*, Public Theater, Roundabout. Regional: American Players Theatre, Idaho Shakespeare Festival, Dallas Theater Center, Ogunquit Playhouse. B.A.: The College of Idaho. Follow his adventures on Instagram: @co_pilote

NORAH SCHEINMAN (Assistant Stage Manager). Regional credits include *The Comedy of Errors* (Shakespeare & Company), *Mary Poppins* (West Virginia Public Theatre), *On The Town* and *Mary Poppins* (Merry-Go-Round Playhouse). She earned her MFA in stage management from Rutgers University's Mason Gross School of the Arts. www.norahjanescheinman.com.

RYAN PARLIMENT (Company Manager) is excited to join NETworks for another season! National tours include *Riverdance* and NETworks presents Disney's *Beauty and the Beast*. He earned his MBA from the University of North Florida, completed undergraduate studies at the University of Central Florida, is proud to be ATPAM Board Certified, and will always be a Florida Gator at heart. CHOMP CHOMP.

JEFFREY RICHARDS (Producer) has produced more than 40 productions on Broadway including two revivals of *Glengarry Glen Ross*, *November*, *Speed-the-Plow* and *Race* by David Mamet, *Spring Awakening*, *August: Osage County* and *Superior Donuts* by Tracy Letts, *The Homecoming* by Harold Pinter, *Hair*, *The Gershwins' Porgy and Bess*, *The Merchant of Venice* starring Al Pacino, *Edward Albee's Who's Afraid of Virginia Woolf?*, *The Glass Menagerie*, *You're Welcome America... A Final Night with George Bush* starring Will Ferrell, two revivals of Gore Vidal's *The Best Man*, *All the Way*, *The Realistic Joneses*, *The Bridges of Madison County*, *You Can't Take It With You*, *Wolf Hall Parts 1&2*, and *Fiddler on the Roof*.

JERRY FRANKEL (Producer) has produced more than 50 Broadway shows and has won Tony Awards for *All the Way*, *Who's Afraid of Virginia Woolf?*, *Porgy and Bess*, *Hair*, *August: Osage County*, *Spring Awakening*, *Glengarry Glen Ross* and *Death of a Salesman*. Also this season: *Sylvia*, *China Doll*, *Fiddler On The Roof*, *American Psycho*.

HUNTER ARNOLD (Producer) is a producer, entrepreneur and the founder of the New Musical Creative Collective, an organization committed to aiding the development of new musical works from emerging artists. Broadway: *Spring Awakening*, *Allegiance*, *Kinky Boots* (Tony Award), *Macbeth*, *Godspell*, *Chinglish* and more.

KEN DAVENPORT (Producer). Broadway: *Spring Awakening*, *Kinky Boots* (Tony Award), *Allegiance*, *It's Only a Play*, *Macbeth*, *Godspell* and others. Off-Broadway: *Daddy Long Legs*. Ken is the writer of the popular blog TheProducersPerspective.com. Upcoming: *Gettin' the Band Back Together*, *Somewhere in Time*. www.KenDavenport.com

CARL DAIKELER (Producer). In addition to his work as CEO of Beachbody.com, he is proud to work on *Kinky Boots*, *Spring Awakening*, *Daddy Long Legs* and more. Upcoming: *Gettin' the Band Back Together* and the film adaptation of LaChiusa's *Hello Again*.

INDEPENDENT PRESENTERS NETWORK (Producer) is a consortium of 40 of the leading Broadway presenters in cities throughout America. Recent and current Broadway/London/U.S. tours include *The Color Purple*, *On Your Feet!*, *An American in Paris*, *The Bridges of Madison County*, *Pippin*, *Kinky Boots*, *Jekyll & Hyde*.

CAIOLA PRODUCTIONS (Producer). Tony-winning brother & sister producing team, Luigi & Rose Caiola. Recent: *All the Way*, *An American in Paris*, *The Elephant Man*. This season: *On Your Feet!*, *Fiddler on the Roof*, *China Doll*, *Spring Awakening*.

WILL TRICE (Producer). Tony Awards for *Porgy and Bess*, *Who's Afraid of Virginia Woolf?*, and *All the Way* as well as nominations for *The Best Man*, *The Glass Menagerie*, *Wolf Hall*, and *You Can't Take it With You*. National Tours include *Porgy and Bess* and *Blithe Spirit*. Coming soon- *Fiddler on the Roof* and *American Psycho*.

WARNER BROTHERS THEATRE VENTURES (Producer). Continuing Warner Bros.' mission of presenting the finest entertainment across all media and platforms to global audiences, Warner Bros. Theatre Ventures is the company's live stage play division, which develops and produces first-class plays, musicals and other stage productions, utilizing the company's expansive catalogue. In addition to this production, WBTV is currently represented on the West End by the hit musical *Charlie and the Chocolate Factory* and on Broadway by both the 2013 Olivier and 2015 Tony Award Best Play-winner, *The Curious Incident of the Dog*

in the *Night-Time* and *Misery*, adapted by Oscar winner Bill Goldman from his 1990 screenplay. WBTB has previously been represented on Broadway by the Tony Award-winning musical *The Bridges of Madison County*, as well as the holiday hit *Elf*, which broke box office records at the Al Hirschfeld Theatre during its initial run. The division also co-produced the original musical *Secondhand Lions* at Seattle's 5th Avenue Theatre and is readying productions of *Dave* and *Beetlejuice* for the stage. WBTB also licenses third-party stage rights to the various properties held within the Studio's vast media library, including such productions as *The Bodyguard*, *Top Hat*, *Singin' in the Rain*, *Hairspray*, *The Wizard of Oz*, *The Color Purple*, *42nd Street*, *Honeymoon in Vegas*, and the upcoming Broadway musical *Diner*.

GENTRY AND ASSOCIATES (*General Management*) has been managing domestic and international touring productions for nearly 20 years. Gentry & Associates has managed over 60 touring productions throughout North America. Current productions include Cameron Mackintosh's *The Phantom of the Opera*, *The Sound of Music*, Disney's *Beauty and the Beast* (U.S. Tour), *Dirty Dancing*, *Blue Man Group*, *Elf the Musical*, *The Bridges of Madison County*, *Bullets Over Broadway*, *Love Letters*, *Once the Musical* and international tours of Disney's *Beauty and the Beast* and *Shrek the Musical*.

OPENING NIGHT: DECEMBER 1, 2015
DES MOINES CIVIC CENTER, DES MOINES, IOWA

GENERAL MANAGEMENT
Gentry & Associates, Inc.
Ken Gentry
Gregory Vander Ploeg,
Jamey Jennings, Tyler Soltis,
Mary K. Witte, Steve Varon

PRODUCTION MANAGEMENT
NETworks Presentations LLC
Jason Juenker,
Laura Dieli, Hector Guivas, Dave Burch

TOUR MARKETING AND PUBLICITY
TYPE A MARKETING
Elyce Henkin DJ Martin
Ryan Dunn

TOUR BOOKING AGENT
THE BOOKING GROUP
Meredith Blair
Kara Gebhart
Laura Kolarik
www.thebookgroup.com

CASTING BY
Telsey + Company
Abbie Brady-Dalton, CSA
Cesar Rocha, CSA

COMPANY MANAGER
Ryan Parliment

Production Stage Manager.....Melissa Chacón
Stage Manager.....Joshua Pilote
Assistant Stage Manager.....Norah Scheinman
Assistant Director.....Lila Rachel Becker
Associate Costume Designer.....Wilberth Gonzalez
Assistant Costume Designer.....William Mellette
Assistant Scenic Designer.....Libby Stadstad
Assistant Lighting Designer.....Paige Seber
Lighting Programmer.....Marc Polimeni
Assistant Sound Designer.....Sean Luckey
Production Audio.....Kate Munchrath
Head Carpenter.....Will Strickland
Flyman.....Shawn Watson
Asst. Carpenter.....Tim Bergstrom
Head Electrics.....Barrett Roberts

Assistant Electrics.....Judith Lopez
Head Audio.....Timothy Schmidt
Assistant Audio.....Justin Carney
Head Props.....Tommy Rivers
Assistant Props.....Cassandra Cody
Head Wardrobe.....Laci Bradshaw
Head Hair & Makeup.....Brittany Steele
Make-up Designer.....Brian Strumwasser
Dialect Coach.....Stephen Gabis
Production Assistants.....Hannah Gosling-Goldsmith,
Carolyn Reich
Marketing Services.....Catherine Major
Advertising.....CreativeXs/
Don Phillips Jr. and Julian Roca; Preston Burford,
Casey Harris, Clint Jackson, Trent Kendrick,
Tosapit Phadetai, Jason Rasmussen
Social Media/Creative.....Jeffrey Richards Associates
Andy Drachenberg, Lindsay Hoffman, Eliza Ranieri
Production Videographer.....HMS Media
Production Photographer.....Matthew Murphy
Accounting.....NETworks Presentations LLC
Tour Accountant.....Laura Carey, CLA
Legal Services.....F. Richard Pappas, Esq.
HR & Payroll Services.....Human Resources inc.
Housing.....Road Concierge, an ALTOUR Company
Travel.....Janice Kessler, Carlson Wagonlit Travel
Trucking.....Clark Transfer

CREDITS
Scenery constructed by Proof Production, Hudson Scenic. Lighting equipment from Christie Lights. Sound equipment by Masque Sound. Rigging by Christie Lights. Scenic Painting by Joe Forbes and Scenic Arts Studios. Costume Shop Timberlake Studios. Dr. King's "I Have a Dream" speech license granted by Intellectual Properties Management, Atlanta, Georgia, as exclusive Licensor of the King Estate.

Rehearsal at New 42nd Street Studios


Special Thanks to
Carson Helton/Yamaha Entertainment Group
Tim Godwin, Taylor Guitars
INGLOT Cosmetics
Des Moines Performing Arts and
Jeff Chelesvig, President and CEO


Tax & Financial Consulting, Accounting Services,
IT Services
CliftonLarsonAllen LLP
George Wilson, Linda Rubenstein,
Pat Guerieri, Tim Pizza


Insurance Broker Services
Maury Donnelly and Parr, Inc.
Robert B. Middleton, Sr and Meghan Shriver


Financial Services and banking arrangements by
SunTrust Bank


ONLINE
BridgesMusical.com
Like us on Facebook at BridgesMusical
Follow us on Twitter @BridgesOnTour
and on Instagram @BridgesMusical


 The Actors and Stage Managers employed in this production are members of Actors' Equity Association, the union of professional actors and stage managers in the United States.


 Backstage and Front of the House Employees are represented by the International Alliance of Theatrical Stage Employees (or I.A.T.S.E.).

 United Scenic Artists represents the designers and scenic painters for the American Theatre.

 The musicians employed in this production are members of the American Federation of Musicians.

 The Director and Choreographer are members of the Society of Stage Directors and Choreographers, Inc., an independent national labor union.

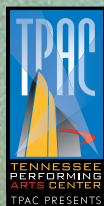
 The Theatre Managers, Press Agents, and Company Managers employed in this production are represented by the Association of Theatrical Press Agents & Managers.

 This production is produced by a member of The Broadway League in collaboration with our professional union-represented employees.

GREGORY PORTER

2016 US TOUR

with special guest **DARA TUCKER**



The charismatic and ever-dapper Gregory Porter breathes life, passion, and honesty into the musical genres he has loved from boyhood, ever since Nat “King” Cole entered his heart. His acclaimed third album, *Liquid Spirit*, offers a replenishing, satisfying brew, and as his fans and audiences will tell you: You can drink deep of Porter’s music, and the best kind of intoxication will follow.

Porter has slowly, measuredly built his craft. His work ethic—dogged, patient, and respectful—is one he learned at his mother’s knee in Bakersfield, California. Though an epicenter of country music, Bakersfield celebrates a mostly-migrated population that brought with it gospel, blues, rhythm and blues, jazz, and soul. This rich mixture of influences may explain the power and range of Porter’s music.

“I’m fully aware that everything I do doesn’t adequately please jazz traditionalists,” Porter says. But he likes it that way. In the end it always comes back to the music. For Porter, the songs, their messages, and their power are all that matters.

Gregory Porter performs at TPAC’s Polk Theater on June 4, 2016, at 8:00 p.m.

TPAC.ORG/Shows • 615-782-4040

TPAC Box Office • Groups of 8 or more, please call 615-782-4060

TPAC.ORG is the official online source for buying tickets to TPAC events.

JANE LYNCH

See Jane Sing

*Broadway
with a Twist!*



No stranger to the stage, actress and comedian Jane Lynch brings her live musical comedy show, *See Jane Sing*, in which she mixes her signature style with beloved Broadway songs, to Nashville for a one-night-only performance.

Lynch, accompanied by a five-piece band, builds the evening around her musical chops and comedic wit and charm. Joining her on stage for a portion of the show are special guests Kate Flannery of *The Office*, who plays Lynch's mischievous vocal partner and Tim Davis, *Glee*'s former vocal arranger. During the live performance, the Emmy Award and Golden Globe winner takes audiences on a musical journey through a world of songs from Broadway to cabaret.

"*See Jane Sing* is one of the most joyous experiences of my career," Lynch says. "I love everything about theatre and performing in front of a live audience is so rewarding." Lynch first cut her theatrical teeth at The Second City, Steppenwolf Theatre. In addition to hosting *Hollywood Game Night*, her recent film and television credits include *A.C.O.D.*, *Three Stooges*, *Wreck-It Ralph*, *Julie & Julia*, *Shrek Forever After*, *The Post Grad Survival Guide*, *Paul and Brownie Masters*, *Glee*, and *Angel from Hell*.

Catch Jane Lynch's *See Jane Sing* at TPAC's Polk Theater on June 15, 2016, at 7:30 p.m.

TPAC.ORG/Shows • 615-782-4040

TPAC Box Office • Groups of 10 or more, please call 615-782-4060

TPAC.ORG is the official online source for buying tickets to TPAC events.

PACKED WITH BROADWAY STARS, *IF/THEN* MAKES NASHVILLE DEBUT JUNE 7-12

“THE BEST MUSICAL OF THE YEAR! In its formal daring, and in the intelligence of its execution, *If/Then* moves into new territory with intense and thrilling results. Every single thing in this show is new – you absolutely never know what is going to happen, right up to the last, powerfully moving beat.”

– *New York Magazine*



Photos by Joan Marcus

Original Broadway cast members Jackie Burns (*If/Then*, *Wicked*) and Anthony Rapp (*Rent*, *Six Degrees of Separation*) join Tamyra Gray (*American Idol Season One Finalist*, *Rent*) and Matthew Hydzik (*Side Show*, *West Side Story*) in the National Tour of *If/Then* as it makes its Nashville debut with a one-week engagement at the Tennessee Performing Arts Center's Andrew Jackson Hall June 7-12.

If/Then is the original Broadway musical written by Tom Kitt (music) and Brian Yorkey (book and lyrics), and directed by Michael Greif, the creative team behind the Pulitzer Prize-winning and Tony Award-winning musical *Next to Normal*. It follows two distinct storylines in the life of Elizabeth, a city planner who moves to New York to restart her life in that city of infinite possibilities. When her carefully designed plans collide with fate, Elizabeth's life splits in two parallel paths. *If/Then* follows both stories simultaneously as she faces the intersection of choice and chance.

"This is a creative story that speaks to how some of the simple choices we make in our lives impact our journeys and experiences. The producers of *If/Then* have done an exceptional job in casting this show, and we're thrilled our audiences have the chance to see these extraordinary Broadway performers up close right here in Nashville," says Kathleen O'Brien, TPAC president and chief executive officer.

Tickets on sale now at TPAC.org, by phone at 615-782-4040, and at the TPAC Box Office, 505 Deaderick Street, in downtown Nashville. For groups of 10 or more, please call 615-782-4060.

Visit TPAC bars to enjoy this romantic beverage for
THE BRIDGES OF MADISON COUNTY:

“THE LASTING PICTURE”

Champagne, Cranberry Juice,
and Grenadine



Bars are located in TPAC's Jackson Hall lobbies on
the Orchestra and Tier levels. Be sure to visit the beautiful
Bar Seven located on the Orchestra level inside Jackson Hall.

Uniquely Nashville.

Find our city's best arts and
entertainment bets, can't-miss events,
artist interviews, society news and
all things unique to Middle Tennessee
every Sunday inside Portfolio and
online at Tennessean.com.



THE TENNESSEAN

PART OF THE USA TODAY NETWORK

Subscribers: Tennessean.com/Register

Non-Subscribers: Tennessean.com/Subscribe

You can get great deals on Broadway, concerts, and more!

Does your employer, civic group,
or school offer TPAC discounts?
Contact us to find out.

**TPAC has *four* great programs
that help you save money:**



Photos: Joan Marcus; Illustration: Zina Saunders

IF/THEN brings New York City to TPAC June 7-12!

Bring a group of 10 or more to this contemporary Broadway musical set where choice and chance collide. This original new musical paints a deeply moving portrait of the lives we lead, as well as the lives we might have led. *New York Magazine* hails it as "Thrilling! The best musical of the year."

**Group tickets start at just \$20.
Visit TPAC.ORG/GroupReservations or call
615-782-4060 to reserve your tickets today!**

THANK YOU

to THE BRIDGES OF MADISON COUNTY audience members
who participated in TPAC's Group Sales programs and purchased tickets by April 26, 2016.

Abenity Perks Program
Baker Donelson
Belmont University
Carol Featherstone
Citizens Tri-County Bank
Diana Rae's Voice &
Performance Company
Freedom Tours
HCA, Inc.
Ingram Scholars
Jeshua Franklin
Kathy Schiavello

Kennedy North
Boulevard Group
Lifestyle Tours
Lipscomb University
Motlow State
Community College
Nissan North America
Reca Barwin
The RH Factor
US Military Members
Vanderbilt Medical Center
Vanderbilt University

©2015 Porsche Cars North America, Inc. Porsche recommends seat belt usage and observance of all traffic laws at all times. Optional equipment shown is extra.



Porsche recommends **Mobil 1** and **MICHELIN**

Legendary Porsche performance with four passengers. We're definitely defying the laws of something.

The Panamera. Experience pure Porsche performance for four.

Porsche of Nashville
1580 Mallory Lane
Brentwood, TN 37027
(855) 409-2487
www.porscheofnashville.com



Blair Concert Series 2015-2016

The Blair School of Music
bringing artistry
to education

For information about our free faculty
and student performances,
guest artists, lectures, master
classes, and more,
visit the Blair website at
blair.vanderbilt.edu



VANDERBILT  **Blair School of Music**

2400 Blakemore Avenue • Nashville, TN 37212

Complimentary valet parking and
FREE self-parking for most events



We believe in second chances



DOING
THE MOST
GOOD™

Learn more about how
we fight poverty in
Middle Tennessee
by visiting
MoreThanAKettle.org



FRIENDSHIP, CONFIDENCE
AND ALL THAT JAZZ
— BECAUSE OF —
BALLET

NEW
**STUDIO
DIVISION**

AGES 8-18

ballet • jazz • hip hop
musical theater

*no previous dance
experience required*

**NASHVILLE
BALLET**

PAUL VASTERLING, Artistic Director

TO LEARN MORE VISIT

nashvilleballet.com/school

IN THE FUTURE YOU'LL HAVE AN
AMAZING WEBSITE



CALL US TODAY

BECAUSE TOMORROW
IS THE FUTURE
AND
WE PROBABLY NEED TO GET STARTED

615.370.1530

ICGLINK

www.ICGLINK.com

SOUND SOLUTIONS

For Better Hearing



**BRENTWOOD
HEARING CENTER**

5544 Franklin Pike, Suite 100
Nashville, Tennessee 37220
*(Just north of Brentwood at the
Old Hickory I-65 interchange)*

*Providing hearing
solutions that enable you
to hear EVERY sound....
from the downbeat
to the final encore!*

Audiologists:

Anne T. Boling, M.Ed. CCC-A

Tania Williams, Au.D.

Kimberly R. Mozingo, Au.D.

(615) 377-0420

brentwoodhearingcenter.com

**LANCASTER
CHRISTIAN
ACADEMY**

WE CELEBRATE THE ARTS

CALL NOW TO RESERVE YOUR CHILD'S FUTURE 615-222-8491

DANCE PERFORMANCES

CHOIR

COFFEE HOUSE PERFORMANCES

FUN DRAMA COURSES

CAPTIVATING MUSICALS

DYNAMIC PLAYS

HUMAN LIFE VIDEOS

ELEMENTARY DRAMA SKITS

THRIVING ARTS PROGRAM

AN OUTRAGEOUSLY FUN SCHOOL WHERE KIDS GROW IN THE LORD

CONTACT INFORMATION

Lancaster Christian Academy • 1340 Oakwood Way • Nashville, TN 37217 • P 615 222 8491 • F 615 222 8492 • WWW.LANCASTERCHRISTIANACADEMY.ORG

**LANCASTER
CHRISTIAN
ACADEMY**

LCA

g+ YouTube Twitter Facebook Instagram



FlexMBA

- Finish in 12 months
- Newly revised and integrated curriculum
- Accelerated cohort opportunity
- Online or on-campus
- Career and professional development seminars
- Network with other business leaders
- Global opportunities—study abroad options

I AM *true* **BLUE**

JONES COLLEGE OF BUSINESS
www.mtsu.edu/mba • (615) 898-2964

AA/EEO/disability/vet

**MIDDLE
 TENNESSEE**
 STATE UNIVERSITY

Old Natchez Country Club is a beautiful venue for many social occasions such as:

- * Wedding Receptions
- * Rehearsal Dinners
- * Bridesmaid Luncheons
- * Holiday Parties
- * Fundraising Gala's
- * Corporate and Charitable Golf Outings

Our central location in Williamson County along with the beauty of the setting and first class service make Old Natchez Country Club the ideal venue for your special event.

115 Gardengate Drive, Franklin, TN 37069
 615-373-3200 • www.oldnatchezcc.com

Andrew Jackson's
HERMITAGE
 HOME OF THE PEOPLE'S PRESIDENT

**ILLUMINATING THE PAST
 INSPIRING THE FUTURE**

VISIT ANDREW JACKSON: BORN FOR A STORM

*Bold, interactive exhibit explores Jackson's rise to power
 and his impact on the U.S.*

**Was He One of Our Greatest Presidents?
 You Decide!**

AGE OF JACKSON

4580 Rachel's Lane
 Nashville, Tennessee
 615-889-2941
www.thehermitage.com



HOPE
LIVES
HERE



NASHVILLE
RESCUE MISSION

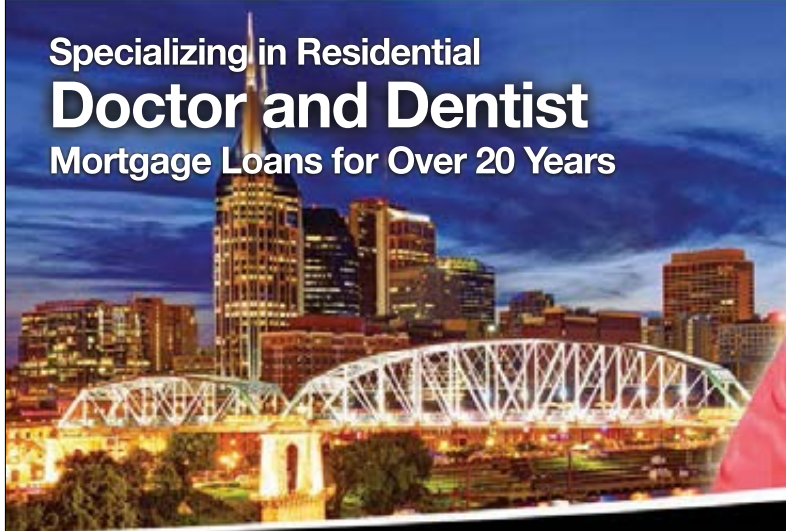
For more information visit
nashvillerescuemission.org

Choose the **Experience & Stability** of Your Neighbor with **20 Years** Mortgage Experience

ALoanwithAlene.com

Your Lender for **LIFE**

Specializing in Residential
Doctor and Dentist
Mortgage Loans for Over 20 Years



Alene Gnyp
Mortgage Loan Specialist

615.582.2334 NMLS #659293

The
B·A·N·K
OF
NASHVILLE

We're here to get you there.

a division of **SYNOVUS BANK**
MEMBER FDIC



The Bank of Nashville is a division of Synovus Bank. Synovus Bank, Member FDIC, is chartered in the state of Georgia and operates under multiple trade names across the Southeast. Divisions of Synovus Bank are not separately FDIC-insured banks. The FDIC coverage extended to deposit customers is that of one insured bank.

MASTERING THE ART OF PRINT



OFFSET PRINTING • DIGITAL PRINTING • WIDE FORMAT PRINTING • BINDERY & FINISHING

1835 Air Lane Drive, Nashville, TN • www.lithographicsinc.com • 615-889-1200

 lithographics-inc  @Lithographics  lithographics-inc  info@lithographicsinc.com

Encore Dining



1808 Grille Located in the Hutton Hotel, 1808 Grille's season menus blends traditional Southern dishes, with global flavors. Award-winning wine list, as well as full bar and bar menu. Whether you are looking for a fine dining experience or a place to be part of the scene, 1808 Grille is the perfect place to meet, dine, and linger. Forbes Four Star. Complimentary Self parking. 1808 W. End Avenue, Nashville, TN
Ph: (615) 340-0012 | 1808grille.com



Two Twenty-Two Grill

Our hot, made-from-scratch lunch is sure to satisfy your appetite. Ready-made options prepared daily, including wraps, sandwiches, salads, baked goods, and more. Located inside the Country Music Hall of Fame.

Ph: (615)291-6759 | 216 5th Ave. S. | Open daily 9 a.m.-5 p.m.



Bajo Sexto Taco

Under the direction of Oaxacan-born chef Kaelin Ulrich Trilling, the taqueria offers a limited menu of Mexican cuisine, including tacos and flautas; hand-made tortillas; wine on tap, beer, and margaritas. Located in the Country Music Hall of Fame.

Ph:(615)577-7717 | 216 5th Ave. S. | BajoSextoTaco.com | Open Daily ~ hours vary



Fleming's Prime Steakhouse & Wine Bar

Fleming's Nashville is an ongoing celebration of exceptional food & wine, featuring the finest prime steak and an award-winning wine list. We are located across from Centennial Park at 2525 West End Ave.

Ph: (615)342-0131 | www.flemingssteakhouse.com/locations/tn/nashville



Goozy Dessert Bar and Café

Nashville's first dessert bar, featuring molten chocolate cakes, housemade gelato, inventive desserts, artisan grilled cheeses, gourmet coffee, wine, craft beer and cocktails. Located in Green Hills across from Orvis and Noshville.

Ph: (615)297.0274 | Visit www.gotogoozy.com for hours and directions.



Rodizio Grill - The Brazilian Steakhouse

Enjoy the authentic flavors, style and warm alegria of a Brazilian Churascaria (Steakhouse). Rodizio Grill features unlimited appetizers, gourmet salads, side dishes and a continuous rotation of over a dozen different meats carved tableside by our Gauchos. Banquet seating and private dining available. Valet Parking.

Ph: (615)730-8358. 166 Second Ave. N. | Reservations Accepted | rodiziogrill.com/nashville



The Melting Pot - a Fondue Restaurant

Where fun is cooked up fondue style. Join us for Cheese and Chocolate fondue or the full 4-course experience. Casually elegant – Always Fun. Open 7 Days for dinner. Sundays after the Matinee. Valet Parking. Reservations Recommended.

Ph: (615)742-4970 | 166 Second Ave. N. | www.meltingpot.com/nashville



Ravello

Enjoy a dinner inspired by the Italian coastal town of Ravello. Begin with selections from our antipasti bar, sample housemade pasta—all in a lush garden setting. Located in Gaylord Opryland Resort. Complimentary parking available.

Ph:(615)458-6848 | GaylordOpryland.com/Dining



Jimmy Buffett's Margaritaville Nashville

On the corner of Fourth & Broadway, Margaritaville has everything... authentic southern food, the best bars & the caliber of music that's expected in Nashville.

Ph: (615)208-9080 | www.MargaritavilleNashville.com

Sales@MargaritavilleNashville.com



Texas de Brazil

Texas de Brazil steakhouse features a gourmet salad area containing more than 50 items, as well as continuous servings of deliciously seasoned beef, lamb, pork, chicken and sausage, all carved tableside. Group dining rates available. Valet parking.

Ph:(615)320-0013 | 210 25th Ave. N. Suite 110 | www.texasdebrazil.com



Trattoria Il Mulino

Trattoria Il Mulino, the acclaimed casual chic restaurant from iconic Il Mulino New York, debuts in Nashville. Enjoy traditional Italian cuisine featuring signature dishes, seafood, pasta, and a selection of 190 wines. BUON APPETITO!

Ph: (615)620-3700 | trattoriailmulinonashville.com

Advertise in the “Performing Arts Magazines”

We have a captive
advertising audience
at every live
performance.



For Advertising Info.

Please call: 615-373-5557

www.GloverGroupEntertainment.com



15/16 SEASON
LIVE ON STAGE



SEPT. 17 - OCT. 4, 2015



DEC. 3 - 20, 2015



FEB. 18 - MAR. 6, 2016



APR. 14 - MAY 1, 2016



JUNE 3 & 4, 2016

BUY TICKETS NOW!

CALL (615) 541-8200
STUDIOTENN.COM

15
16
SEASON

JANE LYNCH

See Jane Sing

Broadway with a Twist!

JUNE 15

On Sale Now!

TPAC.ORG/Shows • 615-782-4040

TPAC Box Office

Groups of 10 or more call 615-782-4060

TPAC PRESENTS

TPAC.ORG is the official online source for buying tickets to TPAC events.



The Tennessee Performing Arts Center is an accessible facility with a variety of services. For more information, see page 60 of this playbill or visit TPAC.org.

**The Bridges of Madison County matinee,
SUNDAY, MAY 15, 2016**

AMERICAN SIGN LANGUAGE: Karin Kalodimos
and Forest Sponseller

AUDIO DESCRIPTION: Julia Cawthon

OPEN CAPTIONING: Tennessee Captioning

The Tennessee Performing Arts Center
gratefully acknowledges
2015-16 SPONSORS

Broadway Series Title Sponsor:



Premier Partners (\$100,000+)



Signature Partners (\$50,000+)



Sustaining Partners (\$25,000+)



Contributing Partners





TPAC gratefully acknowledges the following organizations and individuals for gifts and pledges received from April 2015 – April 2016.

These gifts support TPAC Education, performing arts programs, and special projects. For more information about donor benefits and sponsorship opportunities, or to notify us of any errors or omissions, please contact TPAC Development at 615-687-4315.

BOARD OF DIRECTORS

C. Dale Allen
Barbara T. Bovender
John Cody
Ronald L. Corbin
Elizabeth S. Courtney
Ansel L. Davis
Emanuel J. Eads
Rod Essig
Eddie George
J. Reginald Hill
Martha R. Ingram
Martha Ivester
Dr. Nola Jones
Tracy Kane
Christine Karbowski
Bill Lynch
Melvin J. Malone
Marcus McKamey
Sherri Neal
Nathan Poss
Jim Schmitz
Larry Stessel
Andrew Tavi
Rhonda Taylor
Claire Tucker
Dr. Philip Wenk
Gail Carr Williams
Uzi Yemin

GOVERNMENT, CORPORATE, AND FOUNDATION CONTRIBUTORS

as of April 19, 2016

\$50,000+

Bank of America
CMA Foundation
The Community Foundation of Middle Tennessee
Delta Dental of Tennessee
Google, Inc.
HCA Foundation on behalf of HCA and the TriStar Family of Hospitals
Metro Nashville Arts Commission
The NewsChannel 5 Network
Nissan North America, Inc.
Raymond James
The Tennessean
Tennessee Arts Commission

\$25,000 – \$49,999

Butler Snow
Corrections Corporation of America
Dollar General Literacy Foundation
Monell's Dining and Catering Regions Bank
Service Management Systems
Vanderbilt University
XMi Commercial Real Estate

\$10,000 – \$24,999

Anonymous
511 Group, Inc.
BlueCross BlueShield of Tennessee
Bridgestone Americas Tire Operations, LLC
Bridgestone Americas Trust Fund
Brown-Forman
Caterpillar Financial Services Corporation
Coca-Cola Bottling Company Consolidated
Dollar General Corporation
Gannett Foundation
Grand Avenue
Grand Central Barter
HCA-Caring for the Community
Ingram Industries
Liberty Party Rental
The Mall at Green Hills
MEDHOST
The Memorial Foundation
National Endowment for the Arts

NovaCopy
Premiere Properties Group, LLC
Mary C. Ragland Foundation
Robert K. and Anne H. Zelle Fund for Fine and Performing Arts*
Ryman Hospitality Properties Foundation
Travelink, American Express Travel

\$5,000 – \$9,999

Adams & Reese LLP
Baulch Family Foundation
Bonnaroo Works Fund
Community Health Systems Foundation
Delek Fund for Hope*
Earl Swensson Associates, Inc.
Ernst & Young LLP
Joel C. Gordon & Bernice W. Gordon Family Foundation*
JohnsonPoss
Landis B. Gullett Charitable Lead Annuity Trust
Middle Tennessee Performing Arts H.O.T. Support Fund
Nashville Convention and Visitors Corporation
Nashville Predators Foundation
Piedmont Natural Gas
Premiere Speakers Bureau, Inc.
Publix Super Markets Charities
The Rechter Family Fund*
Sargent's Fine Catering
SunTrust Bank, Nashville
Waller
Washington Foundation
Woodmont Investment Counsel, LLC

\$2,500 – \$4,999

Aladdin Industries Foundation, Inc.
Athens Distributing Company
Best Brands, Inc.
Creative Artists Agency
Crumb de la Crumb
EBS Foundation
Enterprise Holdings Foundation
Samuel M. Fleming Foundation
Patricia C. & Thomas F. Frist Designated Fund*
Minuteman Press
Kendra Scott
Irvin and Beverly Small Foundation
South Arts

\$1,500 – \$2,499

The Atticus Trust
Ezell Foundation
Hard Rock Cafe
Puckett's Grocery & Restaurant

\$500 – \$1,499

American Paper & Twine Charitable Fund
Amerigo
Cabot Creamery Cooperative of Vermont
Fleet One, LLC
The Franklin Center for Skin & Laser Surgery
The Dorothy Cate and Thomas F. Frist Foundation
Glover Group Entertainment
Kraft CPAs
Kroger Company
Loews Hotels
Morton's The Steakhouse, Nashville
Nashville Arts & Entertainment Magazine
Nfocus
Omni Nashville Hotel
Purity Foundation
Rodizio Grill The Brazilian Steakhouse
Sprinkles Cupcakes
Wright Travel Agency

\$250 – \$499

C-Tech Controls
Law Office of Michael K. Williamson
Louisiana-Pacific Foundation
Microsoft
Millennium Security Services
Miss Kitty's Bed and Bath

INDIVIDUAL CONTRIBUTORS

as of April 19, 2016

CHAIRMAN'S CIRCLE

\$10,000 +

Julie and Dale Allen
Mr. and Mrs. Jack O. Bovender Jr.
Anita and Larry Cash
Eva-Lena and John Cody
Martha R. Ingram

PRODUCER'S CIRCLE

\$5,000 – \$9,999

Mr. and Mrs. David J. Baulch
Mr. and Mrs. Robert E. Baulch Jr.
Mr. and Mrs. Robert E. Baulch III
Kelly and Richard Crook
Dr. and Mrs. Jeffrey Eskind
Beth Fortune and Debbie Turner
Chuck Hall
John Reginald Hill
Mrs. Victor S. Johnson Jr.
Mr. and Mrs. Victor S. Johnson III
Kathleen and Tim O'Brien
Mr. and Mrs. Ben R. Rechter
Judy and Steve Turner
Neil and Chris Tyler

APPLAUSE SOCIETY

\$1,250 – \$4,999

Mr. and Mrs. Craig J. Andreen
Colleen and Beth Atwood
Melinda and Jeff Balser
Jeffrey and Barbara Basalyga
Kevin Bay
Dr. Steven Bengelsdorf
Marla Blessey
Dr. and Mrs. Frank H. Boehm
Mary and Ron Buck
Michelle and Paulus Buijsman
Melvin and Shirley Butler
Gary Bynum
Andrea Carlton
Drs. Toni and Timothy Carlton
Anthony and Diane Carroccia
Mr. and Mrs. Christopher John Casa Santa
Elizabeth and Jerone Cecelic
Mrs. William S. Cochran Sr.
J. Chase Cole
Marjorie and Allen Collins
Ronald L. and Brenda J. Corbin
Mr. and Mrs. Richard Courtney
Pam and Louis Cuccia
Mary Britton Cummings and Joseph Cummings
Mildred and Richard Darragh
Jana and Ansel Davis
Marty and Betty Dickens
Barbara and Emanuel Eads
Wendy and Mark Eddy
Billy and Jamie Eskind
Jane and Richard Eskind and Family
Seth and Judy Eskind Household
Laurie and Steven Eskind
Shary and Rod Essig
Robert Evans
Linda and Miles Ezell
Robert Finn and Gary Lingofelter
Mrs. Charles C. Fowler Jr.
Dr. and Mrs. Thomas F. Frist Jr.
John Mack Green
Tracy Guarino and Joseph Calabrace
Gail Guindazola
Carolyn and Terry Hamby
Becky Harrell
Lisa Hartman

Dr. and Mrs. Stephen L. Houff
Rick Isaacson
Teresa and Andre Jaeckle
Timothy and Stefanie Jakobs
Dr. Angela Jefferon
Susan and Bill Joy
Joseph Judkins and Renée Conde
Ray and Rosemarie Kalil
Jacqueline Kelly
Lee and Glenda Kraft
Michael D. and Kimberly M. Law
The Honorable Thomas and Terri Lewis
Mr. and Mrs. Bill Lynch
Spence and Leigh Madell
Teresa and Reagan Major
Mr. and Mrs. William Maksymowicz
Melvin Malone
Diane and Frank May
Sheila and Richard McCarty
Marcus McKamey
Susan and Michael McKay
Mr. and Mrs. Michael Ray McWherter
Robert and Yin Mericle
Alisa Miles
Lisa and Timothy Moore
Teresa and Mike Nacarato
Dr. and Mrs. Mathew Ninan
Dr. Casey and Mrs. Holly Noble
Randall Phillips
Cathy and Craig Polkow
Mr. and Mrs. Dale W. Polley
Nathan Poss
Wells Richardson and Jane Bowlin
Carla Robertson
Mark and Carla Rosenthal
Anne and Joseph Russell
Dr. Norman Scarborough and Ms. Kimberly Hewell
Michelle and Jim Schmitz
Janet and William Schock
Dr. and Mrs. Timothy P. Schoettle
Catherine and Tom Sinkewicz
Sloan Family
Mr. and Mrs. Irvin Small
Rebecca and William Smith
Debbie and Scott Snoyer
Ronnie Steine and Beverly Keel
Sara and Larry Stessel
Deborah and James P. Stonehocker
Lauren and Andrew Tavi
Mona and David M. Tehle
Mr. and Mrs. Jim Tothacer
Sarah Trahern and Wayne Flatt
Byron and Aleta Trauger
Dianne and Tom True
Claire Whitfield Tucker
Mr. and Mrs. Cal Turner III
Lyn N. Walker
Greta and Jim Walsh
Dr. and Mrs. Philip A. Wenk
Mrs. John Warner White
David and Gail Williams
Donald R. Williams and Richard W. Zelek
Dallas and Fleming Wilt
Jim and Maureen Wynalek
Kurt Zettel and Anna Burgner
Denise and Victor Zirilli
Kathleen M. Zuccaro

DIRECTOR'S CIRCLE

\$700 – \$1,249

Dr. and Mrs. Jeffrey T. Adams
Mary Bass
Bob and Margaret Beck
Suzanne Bradford and Judy Lojek
Mr. and Mrs. Frank M. Bumstead
Michael and Pamela Carter
Kerri Cavanaugh and Michael Schlosser

Drs. Walter and Deborah Clair
 Bess Clemons
 Jane and Bill Coble
 Janice J. Compton
 Ms. Andrea Conte and
 Honorable Phil Bredesen
 Paul Cook and Michael McKee
 Beth Crabb
 Anna Catherine Davenport
 Edward J. DeBartolo Jr.
 Alice and Walton Denton
 Fred Dettwiller
 Pam Dishman
 Dr. James E. and
 COL Beverly E. Edwards
 Robert Eisenstein
 Holly and Craig Evans
 Judy and Tom Foster
 Andrew and Allison Fowler
 Jeanne Gavigan
 Julie Gillen
 Mr. and Mrs. Fred C. Goad
 Mr. and Mrs. Aubrey B.
 Harwell Jr.
 Debbie Herod
 Diane Kruse
 Mr. and Mrs. Randolph
 M. Lagasse
 Kimberly and James Lewis
 Heather and Alan Looney
 Gwyneth McEuen
 Cindy and Danielle Mezera
 Kent and Alice Ann Nagel
 Dana and Peter Nappi
 Nan Parrish
 C. Wright Pinson
 Karen and Tyler Russell
 Madeleine and Paul Sapoch
 Elaina Scott
 Mr. and Mrs. William Spehr
 Joe N. and Brenda Steakley
 Rhonda Taylor and Kevin Forbes
 James Weaver
 Jerry and Ernie Williams

PERFORMER'S CIRCLE \$300 – \$699

Anonymous (2)
 Linda Albertalli
 Laura Alford and
 Maddie Hickman
 Lainie and Roger Allbee
 Gay and Laurence Alvarez
 Karen and James Ankrom
 Dreama Arguello
 Kris Atkins
 C. Nelson Bailey
 Carolyn and Kirby Baker
 Clark and Carolyn Baker
 Dolores A. Barnett
 Richard Barnett
 Christie Barrett
 Sharon and John Barrett
 Gary Barton and
 Steve Manchester
 Dana and Martin Bauguess
 Betty Beasley and Melissa Ott
 Piper and James Bell
 Mrs. Annie Laurie Berry
 Joanne Bertone
 Diane R. Berty
 Justin R. Billings
 Cherry and Richard Bird
 Brian K. Blackburn
 Anita and Michael Blackmer
 Rose and Allan Bleich
 Patricia J. Bloomfield and
 Wayne Irvin
 Sally Ann Blue
 Allison and Joe Boever
 Mr. and Mrs. Paul Boklage
 April and Robert Bosse
 Jerry Boswell
 Mr. and Mrs. C. E. Bowden
 Keith Bowman and
 James Lassiter
 Patricia Bradford and
 Dr. Michael Batty
 Pam and Jim Brady
 Elizabeth Brandau
 Dr. and Mrs. Barry W. Brasfield
 Andy Brashier
 Jo Ann Brassfield



Robyn and Livingston Brien
 David and Jenny Briggs
 James Bristol
 Louise and Eric Brock
 Lorrie K. Brouse and
 Richard Piazza
 Erica Brown
 Patsy and G. William Brown
 Cari Buckingham
 Dr. and Mrs. E. James Burton
 Fay Burton
 James and Annette Butler
 Mrs. Lillian Caldwell and
 Mr. Joe Caldwell
 Lauren Campbell
 Russ and Penny Campbell
 Jeff and Kathy Cartwright
 Agenia Clark
 Mr. and Mrs. Roy E. Claverie Sr.
 Kira and Jeff Cleveland
 Mike Clutts
 Jennifer M. Cochran
 Kathleen Cockshaw
 Deborah Coleman
 Jerry and Yvonne Collier
 Sam and Debbie Collins
 Jennifer Colquitt
 Mr. and Mrs. Tom Cone
 C-Tech Controls
 Joel and Rebecca Cooper
 Virginia Hixon Corbitt
 Mr. and Mrs. James A. Croy
 Kevin and Mitzi Curlee
 Kimberly L. Darlington
 Nancy and Bob Darnall
 Robert and Ruth Darula
 Gina and John Davis
 Ann and Kirby Davis
 Joy Day
 Jennie Dean
 Teresa Deathridge
 R. Allen Decuyper and Steve Sirls
 Teri S. Devries
 Brad Dilling
 Kathleen V. Dixon
 Tim and Tiffany Dodge
 Mr. and Mrs. Robert Doochin
 Myrtianne Downs
 Bill and Linda Duncan
 Ernest and Mitzi Dunkley
 Pamela and David Duquette
 Kitty and Pat Emery
 Annette S. Eskind
 Jeff Eubanks
 Jill Fainter
 Louis Falzetti

Sylvia and Kenneth Faries
 Joel and Julie Fay
 Jenni and Henry Feldhaus
 Mr. and Mrs. John D. Ferguson
 Holly and Andrew Feris
 Charlie and Susan Finch
 Kellie Fitzpatrick
 Jon and Lauren Folk
 Virginia Fontanella
 Linda and David Forrester
 Kimberley and Ryan Foster
 Joan and Dick Fox
 Leslie Fram and Lanny West
 Michelle and Stephen Frohsin
 Debi and Lance Fusacchia
 Dr. Gary Gallant
 Denise George
 Suzanne Glover
 Dr. Barry W. Goley and
 Grant W. Goodman
 Tracy and Robert Good
 Kim and Dan Gordon
 David B. Gray
 Don Gray
 David and Nicole Green
 Kat and Jeff Greene
 Jane Greenway
 Cathy Guenther
 Cathy Gunn
 G. T. Guthrie
 Donna and John Hagan
 Carl and Connie Haley
 Mr. and Mrs. Michael J. Harbers
 Adrienne Harms
 Barbara Hayes
 Dr. and Mrs. Hugh L. Head III
 Jim Hearn
 The Helm Family
 Arthur and Loyda Henderson
 Mr. and Mrs. Kevin R. Hennessy
 Winston C. Hickman Jr.
 Hank and Mary Hildebrand
 Patricia Hillhouse
 Chris J. Hohl
 Mr. Jim Holland
 Greg and Becca Hollis
 Jeff and Ashley Hollis
 Deborah and Donald Holmes
 Joan Z. Hornberger
 Helen R. Houston
 Joan Howard
 Dr. and Mrs. Richard A. Howerton
 Sara and David Hunt
 Melissa and Douglas Hunter
 Mr. and Mrs. Shandy Husmann
 Cameron Hyder

Dana Moore and Jack Isenhour
 Honorable and Mrs. Ed Jackson
 David and Michelle James
 Debbie and Gary Janke
 Karissa Jargo
 Brian and Jenni Jones
 Dr. Nola Jones
 Susan and Roland L. Jones
 Candace and Arvindh
 Kanagasundram
 Christine Karbowiak and
 Martin Vanek
 James and Libby Kelly
 Jeanette and
 Christopher Kenyon
 Teresa Kersey
 George and Sue Kettle
 Michael Kice
 Nicholas Kilen
 Lloyd King
 Arthur Kirkby
 Herb Knopp
 Janet and James Knox
 Debra and James Kovanda
 Kenneth Kraft and Lucilyn Crow
 Jan and Rand Krikorian
 Paul H. Kuhn Jr.
 Dr. Robert and Lori Landsberg
 Robert Lane and Emily Vandiver
 Timothy Larson
 Ms. Marketta Laurila
 Christopher and Vera Lee
 Patti and Don Liedtke
 Andrea Lindsey
 Cecilia Little
 Mary and Arthur Lodge
 Ruthie and Katie Logan
 Rhonda and Danny Long
 Nancy Lorenzi
 Angela and Gene Lovell
 Sandra Lowe
 Rhonda and Randy Lowry
 Amy and George Lynch
 Don and Kathy MacLachlan
 Nancy MacLean
 Dr. and Mrs. Samuel MacMaster
 Gretchen and Brian Macy
 Jane and John Malatac
 Marilyn Martin
 Robert Mathews
 Pamela McAteer
 Juli and David McCay

John and Robin McClellan
Robert W. McDonald
Tim and Karen McLaughlin
Adrienne and Richard McRae III
Roy D. Meadows
Darrell Merryman and
Jennifer Wright
Barbara and Don Meyer
Mitzi and Rick Michaelson Jr.
David and Lisa Minnigan
Michelle M. Mittiga
Diana and Jeffrey Mobley
Tom and Vicki Moon
Janice B. Moore
Joann Morris
Kristi and Gregory Morrow
Michael and Pam Mover
Mr. and Mrs. John Muchukot
Jeff and Stephanie Murphy
Marie Murphy
Mickeye M. Murphy
Pat and Kitty Murphy
Kay Awalt Musgrove
Mr. and Mrs. Jack Nadeau
Mr. and Mrs. William Newton
Kristin E. Nishanian
Agatha Nolen
Laura and Vincent Nord
Andre and Jeani Olivier
Corinne J. Oreilly and
Richard Bissonette
Jeff and Leslie Overby
Jeff and Meghan Owen
Julie Owens
David and Pamela Palmer
Evetta K. Palmer
Jerry Parker
J. Russell and Phyllis Parkes
Pat Payne
Nancy and Stephen Peluso
Mr. and Mrs. Delmer H. Peppers
John and Kandace Peppers
Elizabeth and Phil Perkins
Susan and Lawrence Phillips
Rose and Kip Pierce
Lyn Plantinga
Rodney and Holly Poling
Lisa Pressnell
Larry and Michelle Price
Linda and Tim Priddy
Joyce and George Pust
Edria and David Ragosin
Ruth T. Raines
Patricia and Douglas Ralls
Elizabeth and Nancy Rankin
Sibyl Reagan
David Reiland and Diane Honda
Daniel Renfroe
Brad and Evelyn Rhoades
Mary Richardson
Joshua Riddell and
Elizabeth Rowland-Riddell
Paul and Marjorie Ridge
Charlotte Roberts
Scott and Kristy Robinson
Susan and Phillip Robinson
Evelyn and William Rodgers
Joyce and Mace Rothenberg
Patricia and Craig Rothschild
Cheryl Rudnicke
Mr. and Mrs. Rundle
Linda Simmons and
Ronald Runyeon
Marianne and Chris Sabis
Laurie L. Sackett and
Mary Ellen Stevens
Teresa Sadler
Amy G. Sale
Susan Sanders and
Steve Woodard
Joe Sanfilippo
Deborah Saunders
John and Debbie Scannapieco
Jean and Stuart Schmidt
Susan Schuchard
Carol and Alvin Scott
Sally and Paul Scott
Jeff and Jennifer Seebach
Dolores W. Seigenthaler
Kelly and Kevin Sekuterski
Charles Selke
Jeanne Sellars
Robert Sentz
Darendra Shannon

Jimmy and Simone Sheats
Paul D. Sheriff
Sharon and Bill Sheriff
Cindy Shields
Melanie M. Simon
Helen Sirett and Ken Hendrix
Holly Smith and Johnna Wilson
Dr. Neil and Ruth Smith
Mr. and Mrs. Thomas S. Smith
Dr. and Mrs. Duane T. Smoot
Robert Sneed
Ashley Sonn and Jordan Miller
Chris and Patrick Sowada
Jennifer L. Spain
Robert and Jane Stammer
Judy Steele
Frank W. Stevens MD
Charles Stewart
Heidi and Greg Stogner
Joy Strange
Tracy and John Szente
Doris R. Taft
Dr. F. William Taylor
Martha and Bill Thompson
Julie and Brian Thure
Edward Tietgens
Carlos Tirres
Jeremy and Callie Tucker
Dustin Turner and Damian Gatta
Margaret and George Uribe
Eric Vai
Ms. Candy Varble
Mr. and Mrs. Bart E. Verhulst
Ann Waddey
Mary Wade
Janice Walker
Dr. and Mrs. Bill Wall III
Richard Walters
Cynthia and Quinton Wasden
David Watson
Kenneth and Julia Weiss
Bryon Wells
Chris and Beth West
Robert and Steve West
Jeff P. White
Bradley and Susan Widmann
Dr. Brian Widmar and
Brad Bennett
Dr. and Mrs. Joseph Wiecek
Dr. and Mrs. J. Kenneth Williams
Michael K. Williamson
Dr. William R. Wilson
Vickie and Don Wirth
Scott Woods
Susan R. Woods
Cliff and Amy Wright
Margaret and Ron Wright
Sharon Yates
Kelly and Steven Yokley
Andy and Jamie Young
Bill and Jane Young
Mr. Jeffrey Young
William D. Young
Mr. and Mrs. Julian A. Zander Jr.
Shirley Zeitlin
Sarah Zhang
Kerndt and Theresa Zuckowsky

PATRONS

\$100 – \$299

Anonymous (3)
Kathleen Airhart
Edgar and Kathi Allen
Dr. and Mrs. Douglas
C. Altenbern Jr.
Dr. and Mrs. Edwin
B. Anderson Jr.
Pat Arnold
Leigh and Hunter Atkins
Stacy Awalt
Grace and Carl Awh
Debra Barnes
Suzie A. Barry
Diane Becker
Rob and Melissa Beckham
Fred and Anne Beesley
Betty Bellamy
Mr. and Mrs. W. E. Bingham
Karen and Peter F. Bird Jr.
Gene and Natalie Boerger
Mary Bolte
Debbie Booton
Eric and Catherine Bottoms
Richard and Sara Bovender
Bella M. Briggs

Eric and Sue Broder
Thomas Carey
Dr. Ana M. Carmona
Dr. John Jeffrey Carr and
Ms. Pamela Crowe Carr
James E. Cason
Barbara and Eric Chazen
Nancy and John Cheadle
Renée Chevalier
Mr. and Mrs. Robert L. Chickey
Bette and Mark Christofersen
Nancy and Terry Clements
Sally and Neely Coble
Charles W. Cook Jr.
Courtney Corbin-Simon
Renette Corensweet
Phylliss Covert
Susan Cox
Dorcas Crosthwait
Doug and Sondra Cruickshanks
Mr. and Mrs. Brownlee
O. Currey Jr.
Christina Daigle
Patricia D'Alessandro
Brittany Dalton
Mark and Nancy Davison
Ken Dease and Julie Stensrud
Dr. and Mrs. Roy L. DeHart
Betty and Vern Denney
Drs. Richard and Carol Detmer
Diana and Michael Diaz
Lee Lee and Wally Dietz
Jessica Ditto
Kathy Doman
Christi Dortch
Gary and Paulette Dowdy
Donna Dudek
Catherine M. Duffy
Bob and Nancy Dunkerley
Anne and Darryl L. Edmonds
Mr. and Mrs. Thomas S.
Edmondson Sr.
Georgette and Shervin Eftekhari
Teresa Ellithorpe
Zita and Dan Elrod
Nancy and Hugh Entrekin
Mr. and Mrs. Jere M. Ervin
Olivia and Bruce Evans
Marcia Everett
Harry W. Exell and
Dr. Mary R. McBean
Cherrie Farnette
Mr. and Mrs. Jack Fleischer
Jessie and Carolyn Foster
Charlotte Fransen
Sandra Freeze
Ms. Mary Galbraith
Mr. and Mrs. Albert Ganier III
Brenda Geise
Dodie and Carl George
Diane and Gary Gober
Megan L. Goosetree
Barbara and Milton Grossman
Mr. and Mrs. Dannie Harrison
Mark Hartzog
Dixie Heagy
Buzz Heidtke
Mr. and Mrs. Eugene Heller
Dr. and Mrs. Reggie Henderson
The Honorable and
Mrs. Douglas Henry Jr.
Karen and Mark Hodges
Jay and Meredith Hollomon
Chris and Susan Holmes
Mr. and Mrs. Henry W. Hooker
Martha Hooper
Donna and Michael Horton
Nancy and Jon Houge
Sue and James R. Hurt
Melissa and Bentz Huschke
Danette and Matthew Idlett
Melissa R. Irvin
Frances C. Jackson
Mr. and Mrs. Steve Jackson
Dr. and Mrs. C. H. Jameson III
Mike Jaramillo
Edie and David Johnson
Lisa K. Johnson
Will and Irish Johnston
Don and Leigh Jones
Ed Kaiser
William B. King
Sandra Koczwarra
Ellen and Buddy Koonce

Linda and Richard Kotler
Howard and Elizabeth Lamar
Sharon H. Lassiter
William H. Lassiter Jr.
Christy Lawson
Sharon and Keith Lesain-Edwards
Mr. and Mrs. Irving Levy
Adam Lewis
Richard and Tad Lisella
Christine Lombardi Household
Keeli Lonas
Steve and Marilyn Lorenz
Charisse Luckey
Shirley Malchow and
Molly McGill
Jenniffer Mallory
Richard and Ruth Manson
Mr. and Mrs. Tony Marks
Mr. and Mrs. Henry Martin
Drs. Paul and
Pat Matthews-Juarez
Richard May
Mr. and Mrs. James L. McGregor
Anne Elizabeth McIntosh
Mr. and Mrs. Robert E.
McNeilly Jr.
Anne Moore
Mary Sue and Chris Moore
Elizabeth and Michael Morard
Dale and Deborah Mosley
Jimmy Naifeh
Scotty Neal
Sherri and Marvin Neal
Richard Neubauer
Dr. Clint Newman
Penny Nichting
Iris A. Nolan
Corinne O' Connor
Mr. and Mrs. William C.
O'Neil Jr.
Courtney Owen
Chrisy Ozier
Dr. and Mrs. Philip M. Pfeffer
Elizabeth Pierce and James Gay
Charley and Alexia Poe
Mr. and Mrs. Marshall T. Polk III
Jennifer and Gus Puryear
Mr. and Mrs. Hugh Queener
Michael Radyko
Jeanie Page Randall
Christie L. Reeves
Ann V. Roberts
Mr. and Mrs. Kenneth L. Roberts
Mary Ellen and Tom Rodgers
Mary and David Rollins
Judith R. Roney
Donna and Steven Rosenfarb
Victoria O. Ross
Mr. and Mrs. J. R. Rudd
Jim and Lee Ann Ruderer
Patty and Tom Sabella
David Sampsell
Ashley Sanders
Ralph and Leeanne Schulz
Mr. and Mrs. James
C. Seabury III
Charles and Bettye Seivers
Scott Sideman
Alice Sisk
J. Smith
Suzanne and Grant Smothers
Lelan and Dr. Yolanda Statom
Nancy Sugg
Lisa G. Thomas
Kimberly D. Thompson
Mr. and Mrs. James F. Turner Jr.
Robert J. Turner
Frances Anne Varallo
Betty J. Vernon
Joyce A. Vise
Jane M. Wakefield
Jane Walker
Lori Ward
Johnna Watson
Angie and Tony Weeks
Colleen Conway-Welch
Dr. J.J. Wendel
Charles and Fran White
Irene and Ridley Wills
Yvonne C. Wood
Dahna Wright
Dr. and Mrs. Carl W. Zimmerman

Celebrating the best Nashville has to offer in Arts & Entertainment



BUY NOW at
NAEmag.com
and at area Newsstands



A Glover Group Entertainment Production

**T.J. MARTELL
FOUNDATION
CELEBRATING
OUR
40TH
ANNIVERSARY**

*...continuing our
mission of funding
life-saving research
at the Frances
Williams Preston
Laboratories at the
Vanderbilt-Ingram
Cancer Center.*



**15 Music Square W
Suite C
Nashville, TN 37203
615-256-2002
tjmartell.org**



GOOD MONSTERS

by Nate Eppler

FEBRUARY 11-27, 2016



NASHVILLE
REPERTORY
THEATRE

nashvillerep.org

CHICAGO

music by John Kander, lyrics by Fred Ebb,
book by Fred Ebb & Bob Fosse

MARCH 17 - APRIL 16, 2016



Concerns or compliments?
PatronServices@TPAC.org

Accessibility Services at TPAC

include parking, elevators, wheelchair seating, use of a TPAC wheelchair, designated restrooms, and services for hearing and visually impaired patrons. Infrared assisted listening devices are available at no charge at the entrance to each theater. TPAC offers signing for hearing impaired patrons, and audio description and Braille programs for blind and visually impaired patrons on the Sunday matinee in the season ticket series of HCA/TriStar Health Broadway at TPAC. Large print programs are available for Broadway and TPAC Presents shows. Special accessibility requests and concerns, excluding assisted listening headsets, should be discussed in advance with the TPAC House Manager at 615-782-4087. Reservations for a wheelchair should be made on the day of performance.

Restrooms for Jackson Hall are located one level down from the 6th Avenue entrance, in the halls behind the seats in the tier and balcony, and downstairs in the back of the orchestra level. Restrooms for Polk Theater are located down the stairs to the left of the entrance to the orchestra level and on the balcony level.

Bars are located in the lobbies and in the back of the orchestra level of Jackson Hall.

An ATM is on the G-Level, near the main security desk at the Deaderick Street entrance to the building.

All electronic devices including cell phones, pagers, watch alarms, cameras, and recorders should be turned off prior to the performance or checked-in with the floor manager or an usher, who will note the seating location of physicians and others who expect emergency calls.

Call Lost and Found at 615-782-4098 to report an item you might have left at TPAC.

In case of an emergency, the number to leave with others is 615-782-4000 (plus performance, theater, and seat location).

Smoking, including use of all tobacco products and electronic cigarettes, is permitted outside the building.



Innovation
that excites

THE NEW NISSAN TITAN® XD.

HAULS MORE CLASS THAN IT SHOULD.

We dropped a Cummins® 5.0L V8 Turbo Diesel¹ into the 2016 TITAN XD. Boosted by a Holset™ M2 two-stage turbocharger, this beast makes over 310 hp and 555 lb-ft of torque, giving you smooth, efficient towing for more than six tons.² That's heavy-duty attitude in a full-size pickup—the first in a lineup of all-new trucks from Nissan.³



AMERICAN TITAN

DESIGNED IN CALIFORNIA ENGINEERED IN MICHIGAN
TESTED IN ARIZONA ASSEMBLED IN MISSISSIPPI
POWERED BY INDIANA AND TENNESSEE



¹Available engine. ²Estimated towing capacity on select trims based on Nissan internal testing. ³The 2016 Nissan TITAN is not yet available for purchase. Expected availability in December 2015. Pre-production model shown; see actual production vehicle when available for final details on features. See *Nissan Towing Guide* and Owner's Manual for proper use. Cargo and load capacity limited by weight and distribution. Always secure all cargo. Heavy loading of the vehicle with cargo, especially on the roof, will affect the handling and stability of the vehicle. Always wear your seat belt, and please don't drink and drive. ©2015 Nissan North America, Inc.

TACORI



Genesis Diamonds



The Official Jeweler of the Tennessee Titans



Green Hills, TN
(615) 269-6996

Cool Springs, TN
(615) 371-6765

St. Matthews, KY
(502) 891-0424

Cincinnati, OH
(513) 657-3000

www.GenesisDiamonds.net