



# CENTER STAGE

Disney's BEAUTY AND THE BEAST, May 31 - June 5, 2016 • The official playbill of the Tennessee Performing Arts Center

NETworks presents

# Disney's BEAUTY AND THE BEAST

©Disney

THE SMASH HIT  
BROADWAY MUSICAL

**Gregory  
Porter**  
June 4

**If/Then**  
June 7-12

**See Jane Sing**  
June 15

**Dixie's  
Tupperware Party**  
June 21-26

**2016-17  
Season Tickets  
are On Sale Now**

**FOR TICKETS:  
615-782-4040  
TPAC.ORG**

ALL-NEW JAGUAR XF

**THIS IS NOT  
BUSINESS AS USUAL**



With a lightweight aluminum body and a supercharged 380 hp V6 engine, the 2016 XF is uncommonly quick. Coupled with leading edge technology, it delivers a unique and intuitive driving experience. And with Best-In-Class coverage including complimentary scheduled maintenance, you'll find the XF is anything but expected.\*

Call or visit to find out more:

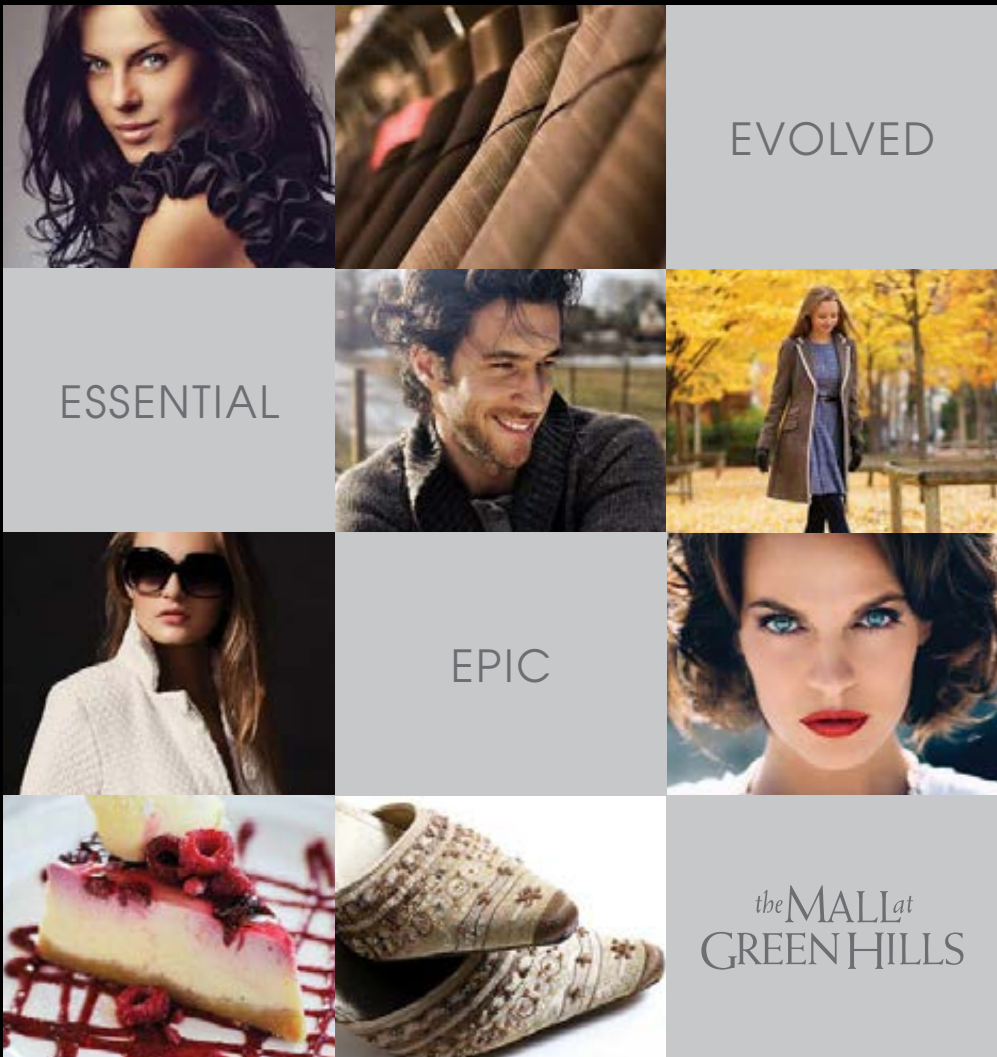
Jaguar Nashville  
3 Cadillac Drive  
Brentwood, TN 37027  
615-986-6000  
JaguarNashville.com

**THE ART OF PERFORMANCE**

— JAGUAR ELITECARE —  
**BEST IN CLASS  
COVERAGE**  
— 5 YEARS 60,000 MILES —

- Ⓐ New Vehicle Limited Warranty
- Ⓥ Complimentary Scheduled Maintenance
- 📞 24-Hour Roadside Assistance
- 📶 Jaguar InControl® Remote & Protect™

2016 Jaguar XF S vehicle shown. \*Class is cars sold by luxury automobile brands and claim is based on total package of warranty, maintenance and other coverage programs. For complete details regarding Jaguar EliteCare coverage, please visit JAGUARUSA.COM, call 1-800-4-JAGUAR or visit your local Jaguar Retailer. © 2015 JAGUAR LAND ROVER NORTH AMERICA, LLC



APPLE • BCBGMAXAZRIA • BURBERRY • THE CHEESECAKE FACTORY  
 THE CONTAINER STORE • DAVID YURMAN • FREE PEOPLE • GUS MAYER  
 HANNA ANDERSSON • J.CREW • JIMMY CHOO • KATE SPADE NEW YORK  
 LOUIS VUITTON • LILLY PULITZER • MAC COSMETICS • MADEWELL  
 OMEGA • RESTORATION HARDWARE • SEPHORA • STUART WEITZMAN  
 THE NORTH FACE • TIFFANY & CO. • TORY BURCH • TUMI

# *the* MALL *at* GREEN HILLS

NORDSTROM • DILLARD'S • MACY'S

OVER 100 SPECIALTY SHOPS & RESTAURANTS  
 HILLSBORO PIKE, I-440 EXIT 3 • NASHVILLE, TN • SHOPGREENHILLS.COM



# Letter from the Publishers

Dear Readers,

We would like to take a moment to acknowledge and honor some of the people who have made a significant impact on arts & entertainment in our city...both from a creative and philanthropic standpoint.

Last year through the pages of our annual newsstand magazine, Nashville Arts & Entertainment Magazine, we began the first annual Nashville Arts & Entertainment Honors.

The 2014-2015 recipients of these honors were: Jeffrey Steele, Steve Buchanan, Martha Ingram, Dr. Thomas Frist Jr. and Vince Gill. Nashville Arts & Entertainment Magazine donated \$1,000 to each of these honoree's local charities.

Our 2015-2016 honorees have just been announced in the new edition of Nashville Arts & Entertainment Magazine, and include: Kathleen O'Brien, John Huie, Nicole Kidman and Alan D. Valentine. To read more about their contributions to arts & entertainment, pick up a copy of Nashville Arts & Entertainment Magazine at area newsstands or order a copy online at: [NAEMag.com](http://NAEMag.com)

We want to also acknowledge and thank our advertisers. As you read your program, please make special note of the companies that advertise. We could not do what we do without their belief in the value of advertising in the arts' publications. You love the arts and so do our advertisers...do business with them when you can!

To learn more about how your company can benefit from an annual ad campaign, go to [GloverGroupEntertainment.com](http://GloverGroupEntertainment.com) or give us a call at 615-429-9689. We provide Nashville and Franklin with a one-stop option for arts and entertainment information and advertising

For additional information and special online promotions, please follow us on Facebook and Twitter. Thank you!

*Robin & Gary*

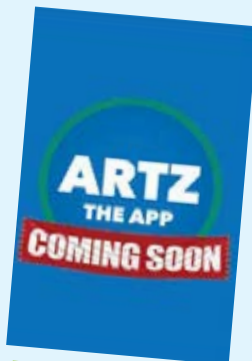
[Robin@GloverGroupInc.com](mailto:Robin@GloverGroupInc.com)  
[Gary@GloverGroupInc.com](mailto:Gary@GloverGroupInc.com)

*For additional information and special online promotions, please "like" us on Facebook and follow on Twitter*

[www.NashvilleArtsandEntertainment.com](http://www.NashvilleArtsandEntertainment.com)  
[www.GloverGroupEntertainment.com](http://www.GloverGroupEntertainment.com)

## NASHVILLE'S PERFORMING ARTS PUBLICATIONS

For Advertising Information, please call 615.429.9689







At Bridgestone  
Americas,  
performance is  
in our blood.  
That's why  
we're proud to  
call Nashville home.

You'll find more than 2,300 Bridgestone teammates  
hard at work and play in the communities we call home.  
Interested in joining us? Be great. Be Bridgestone.



Join our team of performers at [BeBridgestone.com](https://www.bridgestone.com/bebridgestone)

**BRIDGESTONE**  
*Your Journey, Our Passion*



Earache.  
Fever.  
Saturday night.

When you need a pediatrician and your pediatrician's office is closed, bring your child to Vanderbilt Children's After-Hours Clinics. A board-certified Vanderbilt pediatrician is on site nights and weekends, treating everything from flu and fevers to rashes and beans in ears. No appointment necessary — just walk right in. We'll even send your child's pediatrician a same-day report about your visit. For more information, visit [VanderbiltChildrensAfterHours.com](https://www.vanderbiltchildrens.org/after-hours).

## **Vanderbilt Children's After-Hours Clinics**

**Open nights and weekends in  
Brentwood, Hendersonville, Mt. Juliet and Spring Hill**

No referral necessary, but please call your pediatrician first.





The BMW X5

[bmwofnashville.com](http://bmwofnashville.com)



The Ultimate  
Driving Machine®



# YOU DON'T NEED A CROWD TO STAND OUT.

## THE BMW X5.

With optional third-row seating, up to seven people can go somewhere they've never been before. And with Panoramic Moonroof, BMW Online™ features like Real Time Traffic Information and Internet, and optional Premium Interior, the journey might just outclass the destination.

Special lease and finance offers will be available through BMW Financial Services.

BMW of Nashville | 4040 Armory Oaks Drive | Nashville, TN 37204 | 800-531-0215 | [bmwofnashville.com](http://bmwofnashville.com)

©2016 BMW of North America, LLC. The BMW name, model names and logo are registered trademarks.





CRYST◉RAMA



Lighting



Appliances



Custom Cabinetry



Hardware & Plumbing



Hermitage  
Lighting  
Gallery

531 Lafayette Street  
Nashville, TN | 615•843•3300  
Monday - Friday 8 to 5 | Saturday 9 - 5  
[www.hermitagelighting.com](http://www.hermitagelighting.com)



## Get comfortable with using less energy at home.

Turn your house into the sanctuary it should be. Visit [2eScore.com](https://2eScore.com) to find out how energy efficient your home is and what you can do to improve it. With a high eScore and lower energy costs, you'll be able to live comfortably.







STEINWAY PIANO GALLERY  
NASHVILLE

For over 160 years Steinway has been making instruments so passionately conceived and meticulously crafted, it can take dozens of artisans with decades of experience twelve months to create ... one.



[www.SteinwayFamilyPianos.com](http://www.SteinwayFamilyPianos.com)

**Since 1929, we have offered the very best pianos in every price range, as a result we consistently sell more pianos than anyone else in Nashville!**



# “WHEN WE GOT TO WILLIAMSON, THERE WERE PEOPLE WAITING ON ME. THEY KNEW EXACTLY WHAT TO DO.”

—ELIZABETH TYER

**AT WILLIAMSON MEDICAL CENTER, OUR STORY IS BEST TOLD BY OUR PATIENTS.**

They have been here. They know us well.

To Elizabeth Tyer, Williamson Medical Center is where she got her life back. She never expected to have a “widow maker” heart attack in her early 40s, but when she called EMS after sickness that worsened by the hour, our paramedics were able to communicate the status of Elizabeth’s condition so that when they arrived, doctors and nurses were standing by and ready to go.

She had a stent inserted into her aortic artery within the hour and credits the fast response time and knowledgeable cardiologists at WMC with the reason she is here to tell her story today.

We want to hear your story.

**MYSTORY@WMED.ORG**



4321 CAROTHERS PARKWAY • FRANKLIN  
**williamsonmedicalcenter.org**



# You bank with people.

CapStar's Private Banking team knows what makes Nashville tick. It's a city where a handshake still matters. Where looking people in the eye and delivering on a promise isn't old-school, it's the expectation. After all, it's not just your money on the line, it's our reputation. That matters. You matter. And that's our matter of fact way of saying we'll deliver a smarter, more personalized banking experience than the other guys.



[capstarbank.com](http://capstarbank.com)



## Build a Customized Drees Home Anywhere

Whether you already own a lot, need help finding a site, or have a particular property in mind, Design Gallery Homes makes it easy to build a customized home anywhere you want to live.

- Firm contract pricing
- Save thousands with no construction loan
- One-stop selections process
- Formal follow-up program

Homes from the \$270s to the \$800s+, plus home site

For a free lot evaluation or to learn more, call (615) 371-9750 or visit [dreeshomes.com](http://dreeshomes.com)



**DESIGN  
GALLERY  
HOMES**  
by Drees



©2014 Drees Premier Homes, Inc. All Rights Reserved.



# From Darkness to Sight

FOREWORD BY SENATOR WILLIAM FRIST, MD

## FROM DARKNESS TO SIGHT

A JOURNEY FROM HARDSHIP TO HEALING

**MING WANG** Harvard/MIT (MD)  
PhD (laser physics)

*From Darkness to Sight* chronicles the remarkable life journey of Dr. Ming Wang, a world-renowned laser eye surgeon and philanthropist.

As a teenager, Ming fought valiantly to escape one of history's darkest eras – China's Cultural Revolution – during which millions of innocent youth were deported to remote areas to face a life sentence of poverty and hard labor. Through his own tenacity and his parents' tireless efforts to provide a chance of freedom for their son, Ming eventually made his way to America with \$50 in his pocket and an American dream in his heart, where against all odds he would earn a PhD in laser physics and graduate magna cum laude with the highest honors from Harvard Medical School and MIT. He embraced his Christian faith and tackled one of the most important questions of our time – Are faith and science friends or foes? – which led to his invention of a breakthrough biotechnology to restore sight.

To date, Dr. Wang has performed over 55,000 eye procedures and has treated patients from nearly every state in the U.S. and from over 55 countries worldwide. He is considered the "doctor's doctor," as he has operated on over 4,000 physicians. Dr. Wang has published 8 textbooks and a paper in the world-renowned journal *Nature*, holds several U.S. patents and performed the world's first laser artificial cornea implantation. He is the recipient of the Honor

Award from American Academy of Ophthalmology and the Lifetime Achievement Award from American Chinese Physician Association. Dr. Wang is currently the only surgeon in the state who performs 3D LASIK (18+), 3D Forever Young Lens Surgery (45+), 3D Laser Kamra (45+) and 3D Laser Cataract Surgery (60+). Dr. Wang established a non-profit foundation which provides sight restoration surgeries for indigent patients who otherwise would never have the opportunity to receive them free-of-charge.

This is a story of one man's inspirational journey, of turning fear, poverty, persecution and prejudice into healing and love for others. It demonstrates how focus, determination, humility and profound faith can inspire a life that, in turn, impacts that of countless others.





Tripping down the theatre stairs was not something you had planned for...



neither was your trip to the **ER**

Since everything in life can't be planned, isn't it good to know you can count on short ER wait times at 12 TriStar Health emergency rooms in the greater Nashville area? Emergencies are our first priority and our wait times reflect that sense of urgency whether you have breaks or strains, stomach pains, pounding headaches or chest pain. Emergency trained physicians provide fast and friendly medical care close by so you can get back to the activities you enjoy most.



TRISTARHEALTH.COM



MAKE YOUR HOME A SHOW HOUSE.



The Nashville Symphony Show House 2015 (shown here), masterfully crafted by Castle Homes. DON'T JUST BUILD A NEW HOME, LET US CREATE YOU A SHOW HOUSE!

**CUSTOM HOMES | REMODELING | INTERIOR DESIGN**

615.309.8200

**CASTLEHOMES.COM**

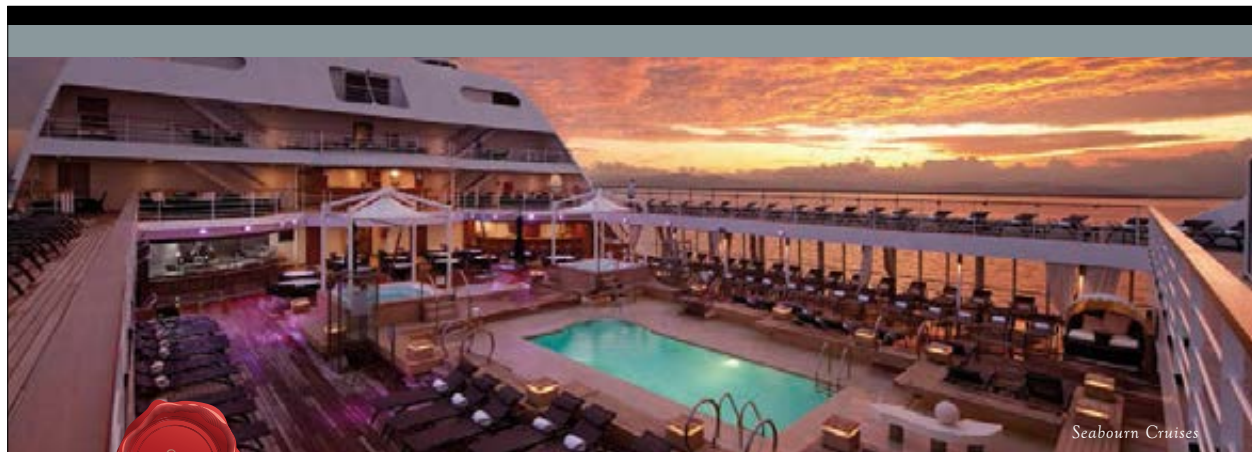
GUARANTEED PRICING

PRE-K-12 • COLLEGE PREPARATORY • INTENTIONALLY CHRISTIAN



## *Preparing for the Performance of Life.*

PRIVATE TOURS OFFERED DAILY • [WWW.LIPSCOMBACADEMY.ORG](http://WWW.LIPSCOMBACADEMY.ORG) • 615.966.1600



*Personally crafted vacations  
for discerning travelers*

Nashville is home to Privileged Journeys, your inside connection to the world of luxury travel. Our inspired, well-traveled advisors will orchestrate a personally crafted vacation in harmony with your desires ensuring your valuable down time is carefree and well spent.

Contact us today and let our connections help you make yours.

**TRAVELINK**  
Luxury Division



**TRAVEL**

404 BNA Drive • Suite 650 • Nashville, Tennessee 37217  
888-920-4977 • [privilegedjourneys.com](http://privilegedjourneys.com)



- Ranked in Travel Weekly's Power List 2012, 2013, 2014, 2015
- Ranked in Nashville Business Journal's Fastest Growing Companies



NETworks Presentations LLC  
*presents*

Disney's  
**BEAUTY AND THE BEAST**

*Music by*  
**Alan Menken**

*Lyrics by*  
**Howard Ashman & Tim Rice**

*Book by*  
**Linda Woolverton**

*Originally Produced by*  
**Disney Theatrical Productions**

*Featuring*

Brooke Quintana Sam Hartley

Matt DaSilva Stephanie Harter Gilmore Stephanie Gray DeAndre Horner Jake Jones Melissa Jones  
Thomas Mothershed Ryan N. Phillips Samuel Shurtleff Christiaan Smith-Kotlarek

*with*

Kari Baker Mike Baskowski Danny Burgos Kevin Paul Clark Ben Cullen Mary Beth Donahoe  
David Grindrod Lance E. Hayes Kyle Huey Hannah Jewel Kohn Lacey Kriston Kevin Kulp  
Jennie McGuinness Hayley Palmer Jeanette Palmer Colleen Roberts Sarah Shelton Micah Wallace

*Scenic Design*  
**Stanley A. Meyer**

*Costume Design*  
**Ann Hould-Ward**

*Lighting Design*  
**Natasha Katz**

*Sound Design*  
**John Petrafesa, Jr.**

*Hair Design*  
**David H. Lawrence**

*Fight Direction*  
**Rick Sordelet**

*Illusion Design*  
**Jim Steinmeyer**

*Puppet Design*  
**Basil Twist**

*Orchestrations*  
**Danny Troob**

*Dance Music Arrangements*  
**Glen Kelly**

*Vocal Arrangements*  
**David Friedman**

*Associate Director*  
**Sam Scalamoni**

*Associate Choreographer*  
**Connor Gallagher**

*Music Coordinator*  
**John Mezzio**

*Music Director/Conductor*  
**Kevin Francis Finn**

*Production Stage Manager*  
**Jess Gouker**

*Company Manager*  
**Colin Byrne**

*Casting*  
**Patricia Pearce Gentry**  
**Bob Cline**

*Tour Marketing*  
**Broadway Booking Office NYC**

*Tour Booking*  
**The Booking Group**

*General Manager*  
**Mary K. Witte**

*Executive Producer*  
**Kary M. Walker**  
**& Seth Wenig**

*Production Manager*  
**Hector Guivas**

*Music Supervision*  
*and Incidental Music Arrangements*  
**Michael Kosarin**

*Choreography by*  
**Matt West**

*Directed by*  
**Rob Roth**

*Disney's Beauty and the Beast* is presented through special arrangement with  
Music Theatre International, New York, NY. [www.mtishows.com](http://www.mtishows.com)

[www.BeautyAndTheBeastOnTour.com](http://www.BeautyAndTheBeastOnTour.com)

# CAST


Belle .....	BROOKE QUINTANA
Beast .....	SAM HARTLEY
Gaston .....	CHRISTIAAN SMITH-KOTLAREK
Lefou .....	MATT DASILVA
Mrs. Potts .....	STEPHANIE GRAY
Lumiere.....	RYAN N. PHILLIPS
Cogsworth.....	SAMUEL SHURTLEFF
Babette .....	MELISSA JONES
Maurice .....	THOMAS MOTHERSHED
Madame de la Grande Bouche.....	STEPHANIE HARTER GILMORE
Chip (at certain performances).....	DEANDRE HORNER
Chip (at certain performances).....	JAKE JONES
Monsieur d' Arque.....	DANNY BURGOS
Young Prince.....	MIKE BASKOWSKI
Carpet.....	MIKE BASKOWSKI
Silly Girls.....	JEANETTE PALMER, COLLEEN ROBERTS, SARAH SHELTON
Townspople/Enchanted Objects .....	KARI BAKER, MIKE BASKOWSKI, DANNY BURGOS, BEN CULLEN, MARY BETH DONAHOE, DAVID GRINDROD, LANCE E. HAYES, KYLE HUEY, HANNAH JEWEL KOHN, LACEY KRISTON, KEVIN KULP, JENNIE MCGUINNESS, JEANETTE PALMER, COLLEEN ROBERTS, SARAH SHELTON, MICAH WALLACE
Voice of Prologue Narrator.....	HASSAN NAZARI-ROBATI


## UNDERSTUDIES

Understudies never substitute for listed performers  
unless a specific announcement is made at the time of the performance.

*for the Beast*-BEN CULLEN, MICAH WALLACE  
*for Belle*-KARI BAKER, MARY BETH DONAHOE  
*for Gaston*-BEN CULLEN, MICAH WALLACE  
*for Lefou*-MIKE BASKOWSKI, KEVIN PAUL CLARK  
*for Lumiere*-DAVID GRINDROD, LANCE E. HAYES  
*for Cogsworth*-DANNY BURGOS, KYLE HUEY  
*for Mrs. Potts*-LACEY KRISTON, JENNIE MCGUINNESS  
*for Madame de la Grande Bouche*-LACEY KRISTON, JENNIE MCGUINNESS  
*for Babette*-COLLEEN ROBERTS, HANNAH JEWEL KOHN  
*for Maurice*-DANNY BURGOS, KYLE HUEY  
*for Monsieur D'Arque*-KYLE HUEY, KEVIN PAUL CLARK  
*for Carpet*-KEVIN PAUL CLARK, KEVIN KULP

Dance Captain .....	HAYLEY PALMER
Assistant Dance Captain .....	KEVIN PAUL CLARK
Fight Captain .....	BEN CULLEN
Swings .....	KEVIN PAUL CLARK, HAYLEY PALMER

The use of any recording device, either audio or video, and the taking of photographs, either with or without flash, is strictly prohibited.

Please turn off your cell phones and pagers prior to the beginning of the performance.



# MUSICAL NUMBERS & SCENES

## ACT ONE

Overture .....	Orchestra
Prologue .....	Orchestra
Belle .....	Belle, Gaston, Silly Girls and Townspeople
Wolf Chase.....	Maurice
Me.....	Gaston
Belle (Reprise) .....	Belle
Home.....	Belle
Home (Reprise).....	Mrs. Potts
Gaston .....	Lefou, Gaston, Silly Girls and Tavern Patrons
Gaston (Reprise) .....	Gaston and Lefou
How Long Must This Go On?.....	Beast
Be Our Guest .....	Lumiere, Mrs. Potts, and Enchanted Objects, Ensemble
If I Can't Love Her.....	Beast

## ACT TWO

Entr'acte/Wolf Attack.....	Orchestra
Something There .....	Belle, Beast, Lumiere, Mrs. Potts and Cogsworth
Human Again .....	Lumiere, Madame de la Grande Bouche, Cogsworth, Mrs. Potts, Babette, Chip and Enchanted Objects, Ensemble
Beauty and the Beast .....	Mrs. Potts
If I Can't Love Her (Reprise).....	Beast
A Change In Me .....	Belle
The Mob Song .....	Gaston, Townspeople, Ensemble
Home (Reprise).....	Belle and Beast
Beauty and the Beast (Reprise) .....	Belle, Prince, Company

*THERE WILL BE A 20-MINUTE INTERMISSION*

## ORCHESTRA

Music Director/Conductor/Keyboards: Kevin Francis Finn  
Associate Conductor/Keyboards: Shane Parus  
Violin: Deborah Moyer  
Reeds: Rebecca Hovan, Nathan Nix, Michael Witsberger  
Trumpet: Nicholas Berry  
French Horn: Rebecca Fathman  
Bass: Catherine O'Malley  
Cello: Eric Sheaffer  
Drums/Percussion: Kevin McNaughton

# GIVING BACK TO MUSIC CITY



Sarah Trahern

Sarah Trahern remembers fondly one of the first times she experienced the true impact of the CMA Foundation. It was during the 2014 CMA Music Festival—Trahern's first as Chief Executive Officer of the Country Music Association—when a hotel employee noticed some colorful papers on a table in her room. The papers were thank you notes from students who have benefitted from CMA Foundation giving.

"I carried those notes with me everywhere I went," she remembers. "The letters from the Disney kids had pictures attached of them dressed up in costumes, and he said 'Excuse me, but how do you know about the Disney Musicals in Schools program?' and I told him how I work for CMA, and all we do through the Foundation."

The CMA Foundation has been the proud title sponsor of TPAC's Disney Musicals in Schools program for three years, providing funding for select Nashville schools to license and produce Disney KIDS or Disney JR. Musicals. As it turned out, the son of the man Trahern met that night had just played Simba in his middle school DMIS production of *The Lion King KIDS*. The experience, he said, changed his son's life.

"He told me his son was starting to hang out with the wrong kids, and how he started to make new friends because of the program. His son was also really shy, so he had gained more confidence by standing up there and singing. Hearing that story was such a great way to kick off my first Music Festival, and to tie what we do with the Foundation together with what we do for Music Fest."

Since 2006, CMA and the CMA Foundation have donated more than \$13.68 million to music education initiatives, including \$10 million directly to Metro

Nashville Public Schools. Foundation funds are generated annually during CMA Music Festival, an event which draws more than 87,000 fans from across the globe to downtown Nashville. Each and every one of the 500-plus artists who perform over the four-day Festival do so for free, allowing CMA to donate ticket proceeds for Foundation giving.

"Our artist community is the reason we are able to give at the level we do," explains Trahern. "The generosity they show each year during Music Festival is unparalleled. This could only happen in Nashville, and only in Country Music."

That generosity does not stop when Music Fest ends, as artists make time throughout the year to visit CMA Foundation beneficiary programs to meet with students and staff. Country stars including Frankie Ballard, Dierks Bentley, Brett





# HOW THE CMA FOUNDATION IS KEEPING ARTS EDUCATION ALIVE IN NASHVILLE

Eldredge, Charles Esten, Hunter Hayes, Charles Kelley, Little Big Town, Kacey Musgraves, Eric Paslay, Thomas Rhett, Darius Rucker, Charlie Worsham, and more have been involved with Foundation programs, and 10-time CMA Award-winner Keith Urban was named the Foundation's first National Ambassador in 2015.

That giving spirit has come to life at TPAC as Country artists have gotten involved with Disney Musicals in School's annual Student Share. Duo Maddie & Tae hosted the event in 2015. Both artists put the true spotlight on the performing students, who gathered to entertain parents, fellow students, and community leaders.

"The Disney Musical in Schools Student Share is one of my favorite things that we get to do every year," said Trahern. "It's something that I block out on my calendar and really try not to miss."

"Recently I was on a panel for InsideOut of the Lunch Box, presented by Vanderbilt and TPAC, with Nola Jones, the coordinator of visual and performing arts for MNPS, and DMIS teaching artist Jon Royal. There was a performance from Hull-Jackson Montessori Magnet School, under the guidance of one of our CMA Music Teachers of Excellence, Kathy Hull. I had seen the students rehearse, so when they performed I just watched the audience. I watched the parents of the students and the other adults who were in the room. I took so much delight in watching them react to the performance, and seeing the smiles on their faces. So for me, Student Share is always one of the most fun events, just to see the kids come of age on the stage and celebrate the end of their curriculum program."

In addition to DMIS and Metro Nashville Public Schools, other local beneficiary programs include Kidsville at Musician's Corner, Nashville Children's Theatre, Nashville Symphony Association, Notes for Notes, Rocketown, The Quest Center, W.O. Smith Music School, and YEAH! (Youth Empowerment through Arts and Humanities).

"During the Festival, if I was meeting with the camera operators who have been doing this for years, or Metro Public Works, the police, or people who have kids in the community, I would share those thank you letters," said Trahern. "It really resonated with them that there's a greater good from all of the hard work, other than just a great event for the city."

CMA Foundation funds have been used to purchase more than 9,000 instruments for MNPS, recognized 50 educators as a CMA Music Teacher of Excellence with \$2,000 grants, and provided access to music education for all 88,000 MNPS students.

"At almost every event we do with the Foundation, at the end of the night I call my dad and just say 'This is what I'm so proud of,'" Trahern said. "We get to do so many wonderful events, that on their own are fulfilling, but because we get to do those we can also put money into programs that make a difference in a child's life long term. It just comes full circle and can't get any better than that."

For more information, visit [CMAfoundation.org](http://CMAfoundation.org).



Maddie & Tae interact with children at the "Student Share" at TPAC.  
Photos by Donn Jones / CMA

# WHO'S WHO IN THE CAST

**SAM HARTLEY** (*Beast!*). Recent credits: *Young Frankenstein* (Frederick), *Les Misérables* (Enjolras) and *Into the Woods* (Wolf/Cinderella's Prince). Training: University of Nebraska-Lincoln. Thanks to the creative team for this incredible opportunity! For my invaluable parents, brothers, family, friends, and teachers who continue to encourage, guide, and inspire. @samfred88

**BROOKE QUINTANA** (*Belle*) is beyond ecstatic to be joining this national tour as Belle. Credits include *Les Misérables* (Eponine), *A Chorus Line* (Diana Morales) and *The Drowsy Chaperone* (Trix). Brooke would like to thank God, her friends, and family for their unwavering love and support on this incredible adventure. To my Mom "I love you TTFA."

**MATT DASILVA** (*LeFou*). National tour debut! Recent credits include *How to Succeed...* (Bud), *Laughter on the 23rd Floor* (Lucas), *New Dawn* and *Les Misérables*. Proud Rhode Island native and Harvard grad. Thanks to Rod, Babs and B&L. Follow me: @mattydasilva

**STEPHANIE HARTER GILMORE** (*Madame de la Grand Bouche*) spent last year chandelier-swinging as Duchess Estonia Dulworth in the national tour of *Nice Work if You Can Get It*. Other favorite credits include *The Tempest* (Ariel), *Cats* (Jelly/Griddle), and *The Marvelous Wonderettes* (Missy). For Stacy. stephaniehartergilmore.com

**STEPHANIE GRAY** (*Mrs. Potts*) is thrilled to be touring the country with one of her favorite musicals. Previously toured with Arts Power, former Young Artist at Seagle Music Colony. BM Boston University. All my love to Mom, Dad, Christina, Becca, and Nate!

**DEANDRE HORNER** (*Chip at certain performances*), 9, hails from McDonough, GA and is very excited to be part of this Broadway national tour. Thanks to all of the supportive people in my life, especially my family.

**JAKE JONES** (*Chip at certain performances*) is thrilled to be here! He has performed in community theater shows including *Jungle Book*, *The Music Man* and *The Wizard of Oz*. Jake would like to thank Artisan Children's Theater and his family, but mostly God who makes all things possible. He misses his three siblings in Texas!!

**MELISSA JONES** (*Babette*). A Southern California native, Melissa currently lives in NYC. Favorite past shows include *42nd Street* (Anytime Annie), *Nunsense* (Mary Leo) and *Sugar Babies* (Sugar Baby). All my love to family and my Mot. Don't know what I would do without you.

**THOMAS MOTHERSHED** (*Maurice*). National Tours: *Little Shop of Horrors* (Seymour), *West Side Story* (Krupke) Regional: *My Fair Lady* (Harry) directed by two time Tony winner, Frank Galati, *Les Misérables* (Thénardier), *All Shook Up* (Jim Haller), *1776* (John Adams), *Hamlet* (Polonius), *Merchant of Venice* (Shylock). BFA Acting Florida State University. www.tmothershed.org

**RYAN N. PHILLIPS** (*Lumiere*) is thrilled to be rejoining the Disney family! Previous credits include the national tour of *In the Mood* (Narrator), *Pirates of*

*Penzance* (Frederic), *Urinetown!* (Bobby Strong), and many shows with Disney Cruise Line. A huge thank you to NETWORKS, Bob, Dave and all my family and friends. www.ryanphillips.com

**SAMUEL SHURTLEFF** (*Cogsworth*) is thrilled to be returning for his second touring season as Cogsworth! Previously, he has been seen in regional productions of *South Pacific* (Emile), *Sordid Lives* (G.W.), *The Foreigner* (Froggy) and *A Midsummer Night's Dream* (Bottom). He would like to thank his beautiful Muse, Terrilynn. www.samuelshurtleff.net. #CogsyAcrossAmerica

**CHRISTIAAN SMITH-KOTLAREK** (*Gaston*). "'Time After Time' was never better, and I heard Sinatra sing it." - Carol Burnett; stunned me! *Assassins* (Booth), *Marriage of Figaro* (Almaviva), *Die Zauberflöte* (Papageno); NYC cabaret: Joe's Pub; NYC solo shows: SubCulture, Rockwood Music Hall. Thrilled to be your Gaston! Insta/twitter: @christiaanuum

**KARI BAKER** (*Townsperson/Enchanted Object*) is making her debut with the touring company of Disney's *Beauty and the Beast!* Regional productions: *Tarzan* (Jane), *A Chorus Line* (Cassie), *A Beef and Boards Christmas* (Swing), *Anything Goes* (Purity), *Mary Poppins*, *The Producers*, and *The Wizard of Oz*. A big thank you goes out to Bob, NETWORKS, her family, and friends. Enjoy the show! Follow her on insta/twitter @KBake222

**MIKE BASKOWSKI** (*Townsperson/Carpet*) is excited to share Disney magic across the country! Recent Credits: Goodspeed Opera House, The Palace Theatre, Theatre by the Sea, The Reagle Music Theatre. Love and thanks to Mom, Dad, J&D +1, The Price Group, and RC."

**DANNY BURGOS** (*Monsieur D'Arque, Townsperson/Enchanted Object*) is humbled to make his national tour debut with Disney's *Beauty and the Beast*. Favorite credits: *West Side Story* (Bernardo) and *The Addams Family* (Gomez Addams). Proud Florida State University graduate! Special thanks to NETWORKS, friends, family, teachers and MT2015. www.dannyburgos.com

**KEVIN PAUL CLARK** (*Assistant Dance Captain, Swing*). National Tour Debut! Regional includes Merry Go Round Playhouse and Portland Center Stage. Company member alum of Nevada Ballet Theatre. Many thanks to this cast, crew, and team. Endless gratitude to his loved ones! For mom.

**BEN CULLEN** (*Townsperson/Enchanted Object, Fight Captain*) is pumped to return to the provincial town for another season! Regional: *Les Misérables* (The Fulton; Foreman, Courfeyrac), *Joseph...Dreamcoat* (The Fulton; Naphtali), *The Wedding Singer* (Glen Guglia). Proud Penn State alumnus; WE ARE! BenCullenWalker.com, Instagram: @Built\_by\_Ben

**MARY BETH DONAHOE** (*Townsperson/Enchanted Object*) is delighted to make her national tour debut! Recent credits: *White Christmas* (Rhoda) at Fulton Theatre; *42nd Street* (Peggy Sawyer); *Spamalot*; *Mary Poppins*, *Les Misérables*, *The Music Man*, *Cinderella*, *Hair* at MSMT. BFA Ohio Northern. Love to the Donahoe Team. www.MaryBethDonahoe.com



**DAVID GRINDROD** (*Townsperson/Enchanted Object*) is from Annapolis, MD and is happy to be back on the road again after playing Mark on the national tour of *A Chorus Line*. A proud graduate of Pace University MT '15. Love to his family, friends, teachers, Bob, Amy, and The Mine. For Elizabeth. Catch the Energy! @david.grin

**LANCE E. HAYES** (*Townsperson/Enchanted Object*) is ecstatic to be making his national tour debut! Select Regional: *The Producers*, *The Little Mermaid*, *Carrie: The Musical*, and *Dames At Sea*. Love and gratitude to Gregg Baker, Mom and Dad, family, friends, Bob Cline, and NETworks.

**KYLE HUEY** (*Townsperson/Enchanted Object*), from Grapevine, TX, is very excited to join the BATB tour after returning from Disney Tokyo! Credits: *Toy Story the Musical* (Buzz Lightyear), *Drowsy Chaperrone* (Aldolpho), *Les Misérables* (Enjolras u/s), *A Midsummer Night's Dream*, *Opera* (Puck), *The Tempest* (Adrian). B.A. Ouachita Baptist University. Thankful for my supportive friends and family! kylewhuey.com

**HANNAH JEWEL KOHN** (*Townsperson/Enchanted Object*) is excited to return to the cast of her dream show! Credits: *Entwined* (Luna), *Joseph...Dreamcoat* (Dance Captain), Disney's Youth Performing Arts promotional film. Love and gratitude to DDPC & family for endless love and support!

**LACEY KRISTON** (*Townsperson/Enchanted Object*) is thrilled to be returning to Disney's *Beauty and the Beast*. Her theatre experience includes *Joseph* (Narrator), *Phantom* (Christine), *My Fair Lady* (Eliza), and ensemble roles with the Indianapolis Opera. She thanks God and family with love to all.

**KEVIN KULP** (*Townsperson/Enchanted Object*). Regional: *Anything Goes* (The Marriott Theatre), *Miss Saigon* (Walnut Street Theatre and Signature Theatre), *A Chorus Line* (Paul), *The King and I* (Walnut Street Theatre and Olney Theatre), Muhlenberg Alumni. Love to Mom and Dad! Follow me on Instagram @Kulpy

**JENNIE MCGUINNESS** (*Townsperson/Enchanted Object*), a graduate of NYU Steinhardt, is originally from Allentown, PA and a professional Irish Dancer. Favorite credits include the national tour of *Elf the Musical* (Ensemble, Deb u/s) and regional performances in *The Full Monty* (Georgie), *The Marvelous Wonderettes* (Suzy), *The Last 5 Years* (Cathy). Love and Hugs!

**HAYLEY PALMER** (*Dance Captain, Swing*) earned her MFA in Acting from UC Irvine. Roles include *Romeo and Juliet* (Nurse), *Twelfth Night* (Maria), *The Fantasticks* (Mortimer), and *Legally Blonde the Musical* (Whitney/Ensemble). Thank you family, friends, and teachers for your love and support! www.hayleydrewpalmer.com

**JEANETTE PALMER** (*Silly Girl/Enchanted Object*). A Michigan native, Jeanette is overjoyed to make her national tour debut in her dream show! Credits: *Singin' In the Rain* (Ensemble/Kathy Seldon u/s), *Funny Girl* (Bubbles), *White Christmas* (Judy Haynes), *Children of Eden* (Eve) and *Thoroughly Modern Millie*. AMDA NY Graduate. Showers of love to family, friends, cast, and crew! Joshua 1:9

**COLLEEN ROBERTS** (*Silly Girl/Enchanted Object*). National tour debut! Select regional: *Irving Berlin's White Christmas* (Westchester Broadway Theatre), *Seven*

*Brides for Seven Brothers*, *Cats*, *I Love a Piano* (OPTC), *Meet Me in St. Louis* (Gretna Theatre). Love to family, friends, Jersey, and Rider MT.

**SARAH SHELTON** (*Silly Girl/Enchanted Object*) comes from Wichita, KS. Graduate of Oklahoma City University with a degree in dance performance. Favorite past roles include *42<sup>nd</sup> Street* (Anytime Annie) and *Legally Blonde* (Serena). Love to Mom, Dad, Rog, and Nicholas!

**MICAH WALLACE** (*Townsperson/Enchanted Object*) is excited to join the cast of Disney's *Beauty and the Beast*! His latest credit was *West Side Story* (Riff) at the Palace Theatre. He'd like to thank his family, friends, Wolfenstein, and God. www.micahwallace.net

**KEVIN FRANCIS FINN** (*Music Director/Conductor/Keyboards*). 1983 B.M (Piano) from The Hartt School, Univ. of Hartford (CT); 1978 graduate of NYC's High School for the Performing Arts. As musical director, Kevin has toured nationally with *Joseph...Dreamcoat* w/Donny Osmond, *Cats IV*, *Dreamgirls*; in NYC, assisted Phil Reno on *Chess* (1992 off-Broadway revival). Musically directed and/or conducted regionally: Northern Stage Co (VT), Red Mountain Theater Co (AL), Springer Opera House (GA), Arizona's Broadway Theatre. From 1999 to 2004, Kevin was an artist in residence and served as the musical director for the Department of Theater and Dance at Millikin University. As a composer, his theater piece *Girl's Night Out* was produced at The Warehouse Theatre in East Croydon, UK and *13 Alabama Ghosts & Jeffrey* in 2010 at Red Mountain Theatre Co. AL. Numerous chamber works for violin, viola, and many, many songs for various voice parts.

**ALAN MENKEN** (*Composer*). Theater: *God Bless You Mr. Rosewater*, *Little Shop Of Horrors*, *Real Life Funnies*, *Atina: Evil Queen Of The Galaxy*, *Kicks*, *The Apprenticeship Of Duddy Kravitz*, *Beauty And The Beast*, *A Christmas Carol*, *Weird Romance*, *King David*, *Der Glöckner Von Notre Dame*, *The Little Mermaid*, *Sister Act*, *Leap Of Faith*, *Aladdin* and *Newsies*. Film: *Little Shop Of Horrors*, *The Little Mermaid*, *Beauty And The Beast*, *Newsies*, *Aladdin*, *Pocahontas*, *The Hunchback Of Notre Dame*, *Hercules*, *Life With Mikey*, *Lincoln*, *Home On The Range*, *Noel*, *Enchanted*, *Shaggy Dog*, *Tangled* and *Mirror Mirror*. Songs: *Rocky V*, *Home Alone 2* and *Captain America*. Awards: 8 Oscars (19 nominations), 11 Grammys (including Song of the Year), 7 Golden Globes, Tony (plus 4 nominations), Drama Desk, Outer Critics Circle, New York Drama Critics, Olivier and London's Evening Standard Award, Drama League. Honors: Songwriter's Hall of Fame, Doctorates from New York University and University of North Carolina School of the Arts.

**HOWARD ASHMAN** (*Lyrics*) conceived, wrote and directed *Little Shop of Horrors*, based on Roger Corman's 1960-era horror flick, with music by Alan Menken. *Little Shop* played for five years off-Broadway at the Orpheum Theater. The show continues to be produced to great acclaim in the U.S. as well as internationally. In 2003, *Little Shop* was revived on Broadway and in 2007 it was revived on the West End. It is currently one of the most produced shows in American High Schools. In 1986, Ashman wrote and directed the Broadway musical, *Smile*, music by Marvin Hamlisch. Little appreciated at the time, *Smile*

is now considered a lost gem of musical theater and is performed by high school students around the U.S. Turning his talents toward film, Ashman was pivotal in the renaissance of Disney animated musicals and in the development of Disney's *The Little Mermaid* (Producer and Lyrics), *Beauty and the Beast* (Executive Producer and Lyrics) and *Aladdin* (Lyrics), all with music by Alan Menken. Ashman's contributions to the revival of classic Disney animated musicals were perhaps best expressed by the dedication to the film *Beauty and the Beast*: "To our friend Howard, who gave a mermaid her voice and a beast his soul. He will be forever missed." Ashman's numerous awards include two Oscars, two Golden Globes, four Grammys, a Drama Desk and a London Evening Standard. He died in 1991 at age 40 from complications arising from AIDS. *Ashman Sings Ashman*, a CD of his work, with never-before-heard demos, including those from *Smile*, is available from PS Classics. Ashman's papers are in the permanent collection of the Library of Congress.

**TIM RICE** (Lyrics), (Sir Tim to you), has been writing lyrics for musical theatre and related enterprises for over forty years, something he only intended to do for a few months while waiting to become a pop star. The waiting has been extended, mainly because of the world's failure to accept him as a rock god, but also because of the distracting success of *Joseph and the Amazing Technicolor Dreamcoat*, *Jesus Christ Superstar* and *Evita* with Andrew Lloyd Webber, *Aladdin*, *King David* and *Beauty and the Beast* with Alan Menken, *Chess* with Bjorn Ulvaeus and Benny Andersson, and *The Lion King* and *Aida* with Elton John. He is well known in England, his home country, for his love of cricket and as a tolerable radio and television personality. He has won numerous awards along the way, including Oscars, Tonys and life-saving badges, but often for the wrong thing and often for simply turning up. He is currently working on a musical play about Machiavelli, and is plugging *Chess in Concert* starring Josh Groban, Idina Menzel and Adam Pascal. More gripping info can be found on [www.timrice.co.uk](http://www.timrice.co.uk) but please don't feel obliged to go there.

**LINDA WOOLVERTON** (Book). While working as a development executive at CBS, Linda Woolverton wrote two young adult novels: *Star Wind* and *Running Before the Wind*. After her books were published by Houghton Mifflin, she began to write full time. She started by writing scripts for animated television shows. When one of her novels caught the attention of a Disney executive, she was hired to write the script for the animated feature, *Beauty and the Beast*. Upon its release in 1991, the film won the Golden Globe for the best comedy/musical and became the first animated film to be nominated for the best picture Academy Award. Woolverton was then hired to write the screenplay for *The Lion King*. She then rewrote the script for *Homeward Bound: The Incredible Journey* as well as writing on the animated feature *Mulan*. She went on to adapt the script of *Beauty and the Beast* for the Broadway stage and received the Tony Award nomination for best book of a musical in 1994. Woolverton was also awarded the Laurence Oliver Award for *Beauty and the Beast* for best new musical in the U.K. *Beauty and the Beast* ran between 1994

and 2007, becoming the ninth-longest running show in Broadway history. She also wrote the book for Elton John and Tim Rice's musical *Aida* which ran for five years at the Palace Theatre. In 2008, Linda received a lifetime achievement award from the Writers Guild of America-Animation Writers Caucus for her longtime work in the field of animation. Linda Woolverton's script for *Alice In Wonderland*, directed by Tim Burton and starring Johnny Depp, was released in March of 2010. The film grossed over one billion dollars worldwide. Woolverton's screenplay for Disney's *Maleficent* starring Angelina Jolie was released in May of 2014 and became a worldwide success. She recently completed *Alice Through the Looking Glass* for Disney, which is in production in the UK, and is currently working on a television pilot based on the Jean Auel's novel, *The Clan of the Cave Bear*.

**ROB ROTH** (Director) received a Tony Award nomination for his Broadway directing debut, Disney's *Beauty and The Beast*, which went on to become the ninth longest running show in Broadway history. *Beauty* has been performed all over the world, winning many awards both for Rob and the production, including the Olivier Award for best musical in London. Rob went on to direct the inaugural production of Elton John and Tim Rice's *Aida* and the Broadway musical *Lestat*, based on the Anne Rice Vampire Chronicles, with score by Elton John and Bernie Taupin. Rob co-wrote the book and directed the musical *The Opposite of Sex*, at the Williamstown Theatre Festival. In addition to his work in theatre, Rob is a frequent director of rock concerts, working with diverse artists KISS, Cyndi Lauper, Alice Cooper, The Dresden Dolls and guitar great Steve Miller. Rob is the executive producer of the film *Taken By Storm*, about the life of legendary British artist Storm Thorgerson. Rob is the co-author of the coffee table book *The Art of Classic Rock*, which features over 1,500 pieces from his collection of rock and roll graphics, the largest private collection of its kind in the world. Rob is married to noted psychologist Dr. Patrick Meade. They have homes in New York City and Long Island that they share with their two labs, Dash Rip Rock and Tag.

**MATT WEST** (Choreographer). After asking his parents non-stop over a year for tap lessons, Matt began dance class at the age of 8 years old. Story goes, his Father said, "Let's find a class, enroll him, and in a few weeks it'll be over and he will stop asking!" That was 48 years ago. A lot has happened since. Matt began working professionally at the age of 13, touring the United States as Peter Pan for the Walt Disney Company. When Matt outgrew his tights, Disney sent him to NYC as a member of Disney's Kids of the Kingdom, performing a summer gig at Radio City Music Hall. From there, Matt went on to perform in many Broadway musicals including playing Bobby in *A Chorus Line*, a character he re-created in the film version directed by Sir Richard Attenborough. For his choreography of Disney's first Broadway musical, *Beauty and the Beast*, Matt received the Los Angeles Drama-Logue Award along with London's Olivier Award, New York's Drama Desk Award, and the Outer Critic's Circle nominations. *Beauty* also received the Olivier Award for best new musical in the U.K. Matt choreographed the Broadway

Continued on page 39



# It's a new day. Time to be bold.

The 2016 C300.



When it comes to design and performance, the new Mercedes-Benz C300 is exceptionally bold. And like you, it thrives on the challenges and changes of an ever-changing world. So go ahead—be bold. Reach past your own boundaries and discover new possibilities in the new 2016 C300.

2016 C300 Shown with optional equipment. See dealer for details. ©2015 Authorized Mercedes-Benz Dealers.

For more information, call 1-800-FOR-MERCEDES, or visit MBUSA.com.

Mercedes-Benz  
of Nashville



630 Bakers Bridge Avenue Franklin, TN 37067 | 800 - 784 - 0289



*Community Banking*  
SINCE 1906

**FB**  
**FirstBank**  
[www.FirstBankOnline.com](http://www.FirstBankOnline.com)

FDIC

Perhaps you've just finished your undergraduate degree or are already established in your job, and you are just not happy with where you are in your career. Give us a chance to help you find your next. With the second-largest graduate enrollment of any private university in Nashville, Lipscomb students experience graduate studies that come with more than just a piece of paper.

At Lipscomb, we'll first work with you one-on-one to help you select the right degree to make a difference in your life and in your future. You might even be surprised to learn that your undergraduate degree can open many new opportunities for a master's in areas you never thought possible...but dream of.



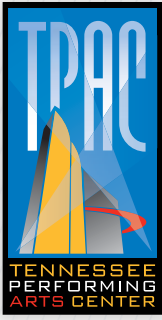
Courses are relevant to the job market and taught by a faculty who not only care about you getting your name on a diploma, but making a name for yourself with it. And as many students tell us, our unique mixture of academics, faith and ethical perspectives, and community partnerships do more for their leadership skills than they ever thought possible.

Find what you need to make a difference in your next step. Contact us at 615.966.6287 or [graduatestudies@lipscomb.edu](mailto:graduatestudies@lipscomb.edu). Let's talk about your plans, ideas and dreams. It's what we do best, to ensure you get to your best.  
**[gradstudies.lipscomb.edu](http://gradstudies.lipscomb.edu)**

# SOMETIMES WHERE YOU WANT TO GO IS WHERE YOU DIDN'T THINK YOU COULD.



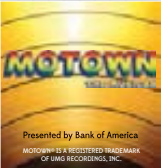




# UPCOMING SHOWS INCLUDE:



March 9-20



February 16-21



April 13



April 15-16



April 26 – May 1



May 10-15



May 31 – June 5



June 7-12



June 15

**TPAC.ORG**  
**615-782-4040**

TPAC Box Office at 505 Deaderick Street



*Pictured: Enswoth presents the high school debut of "Ring of Fire"*

## In Search of Truth

Enswoth is a kindergarten through twelfth grade, coeducational independent school. The School promotes academic excellence and inspires students to be intellectually curious, to **use their talents to the fullest**, to be people of integrity, and to be contributors to society.

EXPLORE **enswoth.com**



Belong.

**BLAKEFORD**  
AT GREEN HILLS  
B

**BLAKEFORD**  
AT HOME  
B

*LiveWell*  
BY BLAKEFORD  
B

THE PREMIER PROVIDER OF SENIOR LIVING  
OPTIONS IN THE GREATER NASHVILLE REGION

Call 615-665-9505 to schedule your private tour,  
or visit **Blakeford.com** for more information



11 Burton Hills Boulevard, Nashville, TN 37215





# WE HIT EVERY NOTE

At Metova we build mobile and web solutions for any sized company. From Fortune 500 companies to start-ups, we deliver top of the line technology and go beyond expectations so you can accomplish your goals.

**WE HOPE YOU ENJOY THE SHOW**

**[WWW.METOVA.COM](http://WWW.METOVA.COM)**



The city's  
hottest spots,  
all under  
one roof.



Discover a variety of culinary delights and escape to one of the only full-service spas downtown. Connected to the Country Music Hall of Fame and Museum and adjacent to the Music City Center. We're ready for you Nashville — like nothing you've ever experienced before.



Inspiring  
creative  
discoveries  
in art  
and life



2015-16 Production of Shakespeare's A Midsummer Night's Dream

# MAKE IT MEMORABLE. MAKE IT GRAND.

Upgrade to elegance with Grand Avenue. Whether you are headed to opening night or date night, our professionals will meet your travel needs and exceed your expectations.

Have confidence in Grand Avenue's trained chauffeurs as you arrive in style in a one-of-a-kind vintage roadster, an understated sedan or a limousine.



GRAND AVENUE™

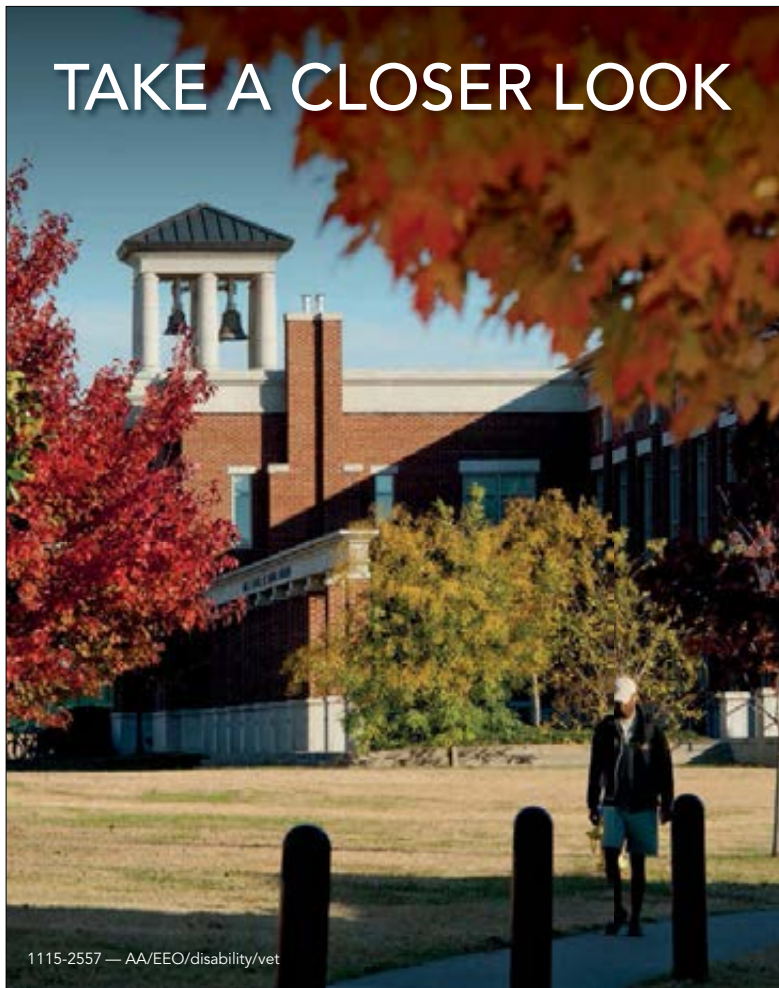
BE DRIVEN

Call us today at 615.714.5466 or toll-free at 866.455.2823  
or visit [GrandAvenueWorldwide.com](http://GrandAvenueWorldwide.com)



GRAND 26683 | PAM | 7/15

## TAKE A CLOSER LOOK



1115-2557 — AA/EEO/disability/vet

## MTSU HONORS COLLEGE

### An Ivy League Experience

Tennessee's first public Honors College fosters the academic excellence and nurturing environment of a small, select, liberal arts college within the setting of a major university. Our students have won Goldwater Scholarships, traveled abroad on Fulbright Scholarships, and earned spots on the *USA Today* All-American Academic Team. Take a closer look.

**MIDDLE  
TENNESSEE**  
STATE UNIVERSITY

[www.mtsu.edu/apply](http://www.mtsu.edu/apply)



# TEXAS de BRAZIL<sup>®</sup>

CHURRASCARIA

*Brazilian Steakhouse*

## Carving a New Experience



16 flame-grilled meats  
served tableside

50-item gourmet salad area

Ultimate caipirinhas,  
award-winning wines,  
and much more

**\$10 OFF**

Nashville

210 25th Ave. N. Suite 110

615.320.0013

Serving Dinner Nightly

\*Must mention ad to server. Valid up to 8 people per table/reservation. Not valid on restaurant holidays, with other offers or Fridays or Saturdays. Expires 6/30/16.

Receive deals at [TexasdeBrazil.com](http://TexasdeBrazil.com)

AWARD  
WINNING  
VIDEO  
PRODUCTION



g+ ★★★★★  
REVIEWS

## GET YOUR **SHOOT** TOGETHER.

At KellyGirl Video, we only  
shoot corporate video.

Our unique approach results  
in a strategic, effective product  
that gives you the very best  
value for your budget.

**kellygirl**  
VIDEO  
CORPORATE VIDEO PRODUCTION

"Kelly absolutely captured the essence of the business proposition and effectively conveyed the value add of doing business with CapStar."

- Claire Tucker, President & CEO, CapStar Bank

**STUDIO NOW OPEN**  
IN THE MARATHON BUILDING

**615.414.9690**  
[www.kellygirlvideo.com](http://www.kellygirlvideo.com)



# EMPOWERING YOUR SUCCESS

## Solutions to Power Your Business

We help modern professionals become more successful with managing paper & digital information, maintaining vital information systems & empowering businesses with leading printing technologies.



### Workflow Solutions

Boost productivity with digitized data, automated workflows & instant access to information while maintaining security & compliance.



### Document Management

Organize, store & manage documents & data with document management solutions.



### Office Equipment

Produce superior documents & facilitate secure & efficient digital workflows with industry-leading multifunctional printing devices.



### Managed Print Services

Gain visibility & control costs of desktop printers. MPS includes everything but the paper, for one flat fee.

**Additional Solutions: Wide Format Printing  
Production Printing • 3D Printing**

For technology that powers your business, call your local RJ Young representative at 800.347.1955 or visit us online at [RJYoung.com](http://RJYoung.com).



It ain't  
over 'til the  
**HOT** lady  
sings!

STRAUSS  
**die fledermaus**

APRIL 2016 • TPAC

A madcap romcom with a  
gorgeous waltz of a soundtrack!

**Tickets from \$19!**

[nashvilleopera.org](http://nashvilleopera.org)

615.832.5242

NASHVILLE  
**OPERA**



# As one of the very first social enterprises, Goodwill has been helping people, communities and the environment since 1902.

Goodwill took root in 1902 when a minister recognized a need and helped people in his community find meaningful work opportunities. The Rev. Edgar J. Helms worked as a missionary in the slums of Boston. He would gather burlap sacks and visit the wealthier residents in his community, asking for items they no longer needed or wanted. After collecting the donations, the Rev. Helms took the items to his church where people, in need of work, repaired what was broken and then sold the used goods. The workers found success through their own efforts, and with work they gained the dignity that comes with earning a paycheck. The Goodwill movement swept the country and, in 1957, Goodwill Industries of Middle Tennessee, Inc. was formed.

## The Social Enterprise Model at Goodwill

Our operation model is unique because it doesn't start with an "ask." It starts with a local service that addresses a need — where to donate used goods and where to find affordable used goods — and then transforms the value of these transactions into verifiable social impact for local communities, individuals and the environment. The revenue generated from the sale of used goods enables Goodwill Industries of Middle Tennessee to assist tens of thousands of people each year with training and job placement services at its 29 Goodwill Career Solutions Centers.



*See the impact your donations are making*  
View our annual report while you wait for the show to begin:  
[giveit2goodwill.org/annualreport](http://giveit2goodwill.org/annualreport)





## No one cares for your business quite like family.

- Audit, Tax and Advisory
- Staffing Solutions
- Technology Solutions
- Employment Partners
- Investment Advisors
- Information Security
- Physician Business Solutions
- Business Process Solutions

LBMC elevates businesses to new heights. We provide a full spectrum of professional services using real-world expertise. We leverage our vast resources to save you time, energy and expense.

The LBMC Family of Companies are comprised of more than 450 experts dedicated in their fields.

Learn the many ways we can enhance your business at [lbmc.com](http://lbmc.com).



Nashville 615.377.4600 | Knoxville 865.691.9000 | Chattanooga 423.756.6585

Applications Accepted Year-Round  
PREKINDERGARTEN THROUGH GRADE 8



Christ the King  
School

615.292.9465

[www.cksraders.org](http://www.cksraders.org)

A ministry of



*"There's something  
special about this place."*

# UNDERSTANDING YOU

There's something to be said for developing a relationship with a bank whose people live and work in your community. We get to know you. We understand your individual needs. Whether it's a checking account, a home improvement loan, a mortgage, or a small business loan, we provide solutions that are right for you.



Understanding You.®

West End | Green Hills | Goodlettsville  
Hendersonville | Hermitage | Cool Springs  
615.340.3000 | [renasantbank.com](http://renasantbank.com)



All loans subject to credit approval.





# SEE HOW THE MUSIC MOVES YOU.

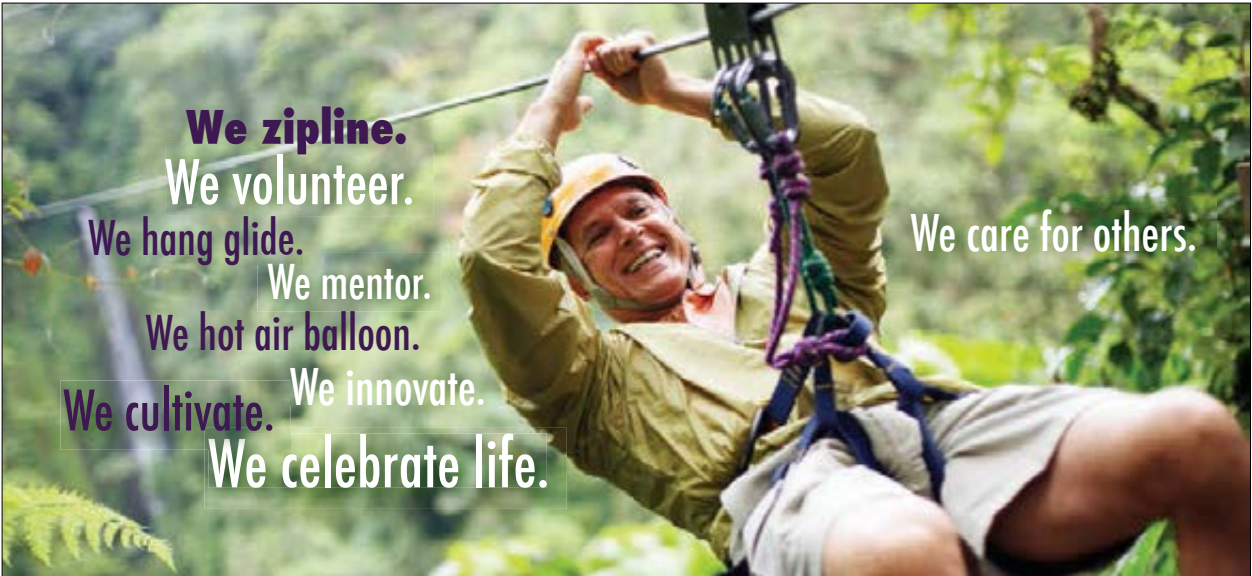
Belmont's School of Music provides training and mentorship to aspiring musicians from across the country so that they can use their gifts to engage and transform the world. See the next class of rising stars at one of many performances this spring. Visit [belmont.edu/music](http://belmont.edu/music) or call 615.460.6408 for tickets or more information.



1.27.16	<i>Jazz Piano Concert Series with Sullivan Fortner</i>
2.1.16	<i>Commercial Music Showcase</i>
2.23.16	<i>World Music Concert Series with The Fretless</i>
3.21.16	<i>Classical Performers</i>
3.28–4.2.16	<i>Belmont Jazz Festival</i>
4.1–4.10.16	<i>The Addams Family</i>
4.16.16	<i>The President's Concert</i>







**We zipline.**  
**We volunteer.**

**We hang glide.**  
**We mentor.**  
**We hot air balloon.**

**We cultivate.**  
**We innovate.**  
**We celebrate life.**

**We care for others.**

*"You are never too old to set another goal or to dream a new dream." – C.S. Lewis*

# That's FiftyForward!

Whether you are seeking adventure, purpose or peace of mind, FiftyForward is there for you. We treasure your gifts, talents and expertise. We recognize your challenges. Let us support you with our nearly 60 years of experience.

We are the only nonprofit that offers such a wide range of resources and activities for adults 50 and older. From our seven lifelong learning community centers in Davidson and Williamson counties for active adults to our comprehensive services to support independence for those needing assistance ...  
*Learn what the buzz is all about!*



Contact us!  
(615) 743-3400 or [www.fiftyforward.org](http://www.fiftyforward.org)

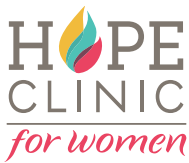


#FiftyForwardFirst #CareTeam #CardCrusaders  
#ChampionOthers #TheLarryKeetonTheatre



Our goal at Hope Clinic is to provide quality care while shining hope into seemingly hopeless situations. Join us at one of our 2016 events! 100% of the proceeds benefits the mission of Hope Clinic.

- Hope for the Future Gala Mar 8
- Smoke on the Water May 1
- Yoga Brew at Jackalope Aug 27
- Golf Tournament Sept 12
- Women of Hope Sept 22
- Cider Carols Dec 1



1810 Hayes Street, Nashville TN 37203  
[HopeClinicForWomen.org](http://HopeClinicForWomen.org) | 615.321.0005



**Ezell-Harding**  
CHRISTIAN SCHOOL



**Take hold** of your child's future.

- Exemplary Academics • Family and Faith Based
- Diverse Student Body • 1:1 Technology in the classroom with Google Chromebooks
- [www.ezellharding.com](http://www.ezellharding.com)

Jason Tucker Photography





*Wants to spend more time with his namesake.  
And less time figuring out how.*

## GET THE SERVICES OF A PROVEN TEAM FOR YOUR INDIVIDUAL FINANCIAL GOALS.

FTB Advisors offers a more personal approach to wealth management than you'll find on a computer or smartphone. We offer individualized strategies in investments, financial planning, trust and insurance services with your particular goals in mind. Discover what a team of dedicated financial advisors can do for you now. And into the future.

**START A CONVERSATION AT [FTBAdvisors.com](http://FTBAdvisors.com)**

511 UNION STREET  
SUITE 400  
NASHVILLE, TN 37219

2214 ELLISTON PL  
SUITE 304  
NASHVILLE, TN 37203

501 CORPORATE CENTRE  
SUITE 150  
FRANKLIN, TN 37067



Insurance Products, Investments & Annuities: Not A Deposit | Not Guaranteed By The Bank Or Its Affiliates | Not FDIC Insured | Not Insured By Any Federal Government Agency | May Go Down In Value Insurance Products and Annuities: May be purchased from any agent or company, and the customer's choice will not affect current or future credit decisions.

FTB Advisors is the trade name for wealth management products and services provided by First Tennessee Bank National Association ("FTB") and its affiliates. Financial planning and trust services provided by FTB. Investment management services, investments and annuities available through FTB Advisors, Inc., member FINRA, SIPC, and a subsidiary of FTB. Arkansas License # 416584. Insurance products available through FTB Advisors Insurance Services, Inc. ("FTBIS"), a subsidiary of FTB. Arkansas License # 247414. In some states, insurance products and annuities are provided by First Horizon Insurance Services, Inc. ("FHIS"), a Tennessee corporation, and a subsidiary of FTB. The principal place of business of FHIS is 165 Madison Ave., Memphis, TN 38103. California License # OD12174. FTBIS, FTB Advisors, Inc., and FHIS may transact insurance business or offer annuities only in states where they are licensed or where they are exempted or excluded from state insurance licensing requirements. FTB Advisors does not offer tax or legal advice. You should consult your personal tax and/or legal advisor concerning your individual situation.

©2016 First Tennessee Bank National Association. [www.firsttennessee.com](http://www.firsttennessee.com)

EXECUTIVE PROTECTION DOGS

# UN-FAIR ADVANTAGE

Protecting Your Greatest Assets.

P. 888.580.9893  
[www.NashvilleK9.com](http://www.NashvilleK9.com)

Nashville  
**K9**<sup>®</sup>  
When Seconds Count...

## MOVIES AT THE SCHERMERHORN



JUNE 12



JUNE 17



JUNE 24



Nashville  
Symphony

615.687.6400

[NashvilleSymphony.org](http://NashvilleSymphony.org)

NOW PLAYING  
★ [Nashville.com](http://Nashville.com)<sup>®</sup>

Visit [NowPlayingNashville.com](http://NowPlayingNashville.com) for Middle Tennessee's most comprehensive event guide.

THEATER ★ MUSIC ★ DANCE  
FAMILY FUN ★ MORE

DISCOUNT TICKETS and EXCLUSIVE GIVEAWAYS  
are a click and tap away!



An initiative of The Community Foundation of Middle Tennessee



Always something\* new to see.

\*something includes, but not limited to, art, film, music and exotic autos.



2016 exhibitions include works by Goya, Rubens and Renoir; Italian automobiles; Soviet photography and film; iconic pottery, textiles and jewelry; Samurai arms and armor; and much more.

Visit [fristcenter.org/art](http://fristcenter.org/art) to see a complete schedule of exhibitions. Consider becoming a Frist Center member and enjoy unlimited visits for a year.

**THE FRIST**  
CENTER FOR THE VISUAL ARTS

919 BROADWAY | DOWNTOWN NASHVILLE

1970 Lancia Stratos HF Zero. Collection of XJ Wang. Image © 2015 Peter Harholdt



GAYLORD  
SPRINGS®  
GOLF LINKS

# TEE UP YOUR NEXT EVENT.

Social Events • Weddings • Golf Outings • Complimentary Parking  
Corporate Events Retreats & Team Building • [GaylordSprings.com](http://GaylordSprings.com)



Faith *and* Science

## Can a cancer diagnosis make you take a leap of faith?

At age 38, Caroline—wife, mother and nurse—was diagnosed with Stage IV ovarian cancer. But instead of letting it take control of her life, she saw it as a second chance to truly live.

She entrusted us with her life 17 years ago and has been jumping (sometimes from 13,000 feet) at every opportunity since.

**Nothing** *shall be impossible.*

To schedule a screening, call 615-284-CARE or visit [STHealth.com/cancer](http://STHealth.com/cancer).



Saint Thomas  
Cancer Care



musicals *Lestat*, with music and lyrics by Elton John and Bernie Taupin and *Mimi le Duck* starring the great Eartha Kitt. Matt also choreographed the world premiere of Elton John and Tim Rice's *Aida*, which debuted at the Alliance Theatre in Atlanta. Other favorites: *Little Shop of Horrors*, Buenos Aires; *The Wanderer*, Tokyo's Parco Theatre; *The Little Mermaid* and *Peter Pan* for Disney Home Video; *The Nutcracker* for the Disney Channel; and *The Spectacular Fantasmic* at Tokyo's Disney Sea. Currently, Matt is directing and choreographing the 2016 opening entertainment of Disneyland in Shanghai, "World of Color" for Disney's California Adventure, and the new Broadway-bound musical, *Click*. Matt dedicates this new *Beauty* to his Mom and Dad with the hope that they agree the tap lessons all those years ago were a good idea indeed.

**MICHAEL KOSARIN** (*Music Supervisor/Incidental Music Arrangements*) was the original music director/incidental music arranger of the Broadway production of Disney's *Beauty and the Beast* over twenty years ago, and has collaborated as composer Alan Menken's music director since then. He has worked steadily on Broadway for over thirty years, on the original Broadway productions of *Nine*, *Grand Hotel*, *Secret Garden*, *King David*, *Mayor*, *A Chorus Line*, *Triumph of Love*, *Little Shop of Horrors*, *Can-Can* (Encores!), *Hunchback of Notre Dame* (abroad and in development), *The Little Mermaid*, *Leap of Faith*, *Sister Act*, *Newsies*, and Disney's newest hit, *Aladdin*. His extensive film work includes the Disney animation films *Pocahontas*, *Hercules* and *Home On The Range*, as well as numerous live action films, including the more recent hits *Enchanted*, *Tangled*, and *Captain America*. He is music director/conductor and song arranger/producer for the new live-action *Beauty and the Beast* starring Emma Watson, Emma Thompson, Kevin Kline, and Dan Stevens; to be released early 2017. He won an Emmy Award for outstanding music direction for his work on "A Christmas Carol" for NBC-TV – for which he also provided the underscore – and did music direction and underscore as well for ABC-TV's "Once Upon a Mattress" and "The Music Man" (another Emmy nomination). He is currently music producer/arranger/conductor for ABC's "Galavant", currently producing its second season. Kosarin is a three-time Grammy-nominated recording artist and producer, and recording and concert work features long-time collaborations with Carly Simon (including the gold album and HBO special "My Romance"), Barbara Cook (including "Tribute", recorded live at Café Carlyle), and Jane Krakowski ("Live at Feinsteins"). An in-demand composer for children's television, his work has been featured on "Sesame Street", "Wonder Pets", and the BBC's "Third and Bird". He lives in New York City with his wife and son.

**STANLEY A. MEYER** (*Scenic Design*) has more than four dozen credits as a scenic designer, production designer and illustrator that have earned him numerous awards and nominations including The League of American Theatres and Producers, National Broadway Award an American Theatre Wing Design Award nomination, a New York Outer Critics Circle Award nomination, Los Angeles Ovation Award Nomination, THEA Award (Best Outdoor Nighttime Spectacular for *Peter*

*Pan's Neverland* at Universal Studios Japan), IAPPA Brass Ring Award (Best Outdoor Daytime Spectacular for SeaWorld's *Blue Horizons* – a stadium show that features a cast of dolphins, whales, birds, trainers, acrobats, and divers in Orlando and San Diego), numerous Los Angeles Drama Logue Awards for his work at the Grove Shakespeare Festival in Southern California, and most recently the 2014 Presidents Trophy for his float design featured in the Pasadena, California *Tournament of Roses Parade*, seen worldwide on New Year's Day. When first starting out in NYC, Stan designed *The Marriage of Bette and Boo*, *Cloud 9*, and The Manhattan Punchline Theatre's Festival of One Act Comedies on Theatre Row, as well as *The Secret Garden* for Theatre Works USA (his first Union job). His critically acclaimed work includes the international sensation Disney's *Beauty and the Beast*; the Southeast Asia tour of *Barbie Live!*; the world premiere of *Treasure Island - A New Musical* (Arkansas Repertory Theatre), the world premiere of Elton John and Tim Rice's *Elaborate Lives* (Alliance Theatre, Atlanta); the new spectacular 2014 version of the Ringling Brothers Barnum and Bailey Circus, *Legends!*; Busch Gardens Williamsburg's Rollercoaster *Verbolten!* and new musical *London Rocks!*; Alice Cooper's 2007, 2009 and 2010 World Tours; The Steve Miller Band 2010, 2012 & 2014 World Tours; Cyndi Lauper's 2008 *True Colors* Tour; SeaWorld's Shamu show *One Ocean* seen in Orlando, San Diego and San Antonio; the Disney on Ice show *Dare to Dream*; Barnum's *Funundrum*, the 200th Anniversary of PT Barnum Edition of the 2012 Ringling Brothers Barnum & Bailey Circus; *The New Nutcracker Ballet* for The Lone Star Ballet, Texas; *Disney Live! Three Classic Fairy Tales* and a plethora of Disney industrials, parades and special events for all of the Disney theme parks including *Mickey's Nutcracker*, filmed for The Disney Channel. He also illustrated the witty and delightful self-help interior design book by James Swan and Carol Beggy called *101 Things I Hate About Your House*. He is represented by the Michael Moore Agency. To view more of Stanley's Design, go to [www.stanleyameyerdesign.com](http://www.stanleyameyerdesign.com).

**ANN HOULD-WARD** (*Costume Design*). Ann has worked on 30 international tours of *Beauty*. Broadway: *The Visit*, *The People in the Picture*, *A Free Man of Color* (Drama Desk nomination), *A Catered Affair* (Drama Desk nomination), *Company*, *Dance of the Vampires*, *Beauty and the Beast* (Tony Award, American Theatre Wing's Design Award, Ovation Award, Oliver nomination), *Into the Woods* (Tony, Drama Desk nominations, Outer Critics Circle nomination, L.A. Drama Critics Circle Award), *Falsettos*, *Sunday in the Park with George* (Tony, Drama Desk nominations), *Harrigan 'N' Heart*, *Dream. St. Joan*, *Three Men on a Horse*, *Timon of Athens*, *In the Summer House*, *Little Me*, *The Moliere Comedies*, *House Arrest*, *Midsummer Night's Dream*, *Hamlet* (Public Theatre). Off-Broadway: *Passion* (CSC revival), *Russian Transport*, *The Blue Flower*, *Wings*, *In the Grand Manner*, *Let Me Down Easy*, *Road Show*, *Surviving Grace*, *Lobster Alice*, *Cymbeline*. Film: *Strike!* (Miramax). Other credits: Metropolitan Opera – *Peter Grimes*, Ringling Bros. and Barnum & Bailey Circus 2001 & 2003, *The Most Happy Fella* (New York City Opera), Los Angeles Opera – *Mahagonny*, Graciela

Daniele (Ballet Hispanico), Lar Lubovitch (White Oak Dance Project – San Francisco Ballet), American Ballet Theatre (*Othello*, *Artemis and Meadow*), Alvin Ailey (*Reminicin'*, *Saddle Up*, *Morning Star*). Over 100 credits in regional theaters. Ann is the U.S. representative for the International Design Quadrennial in Prague and a recipient of the Fashion Institute of Technology's Patricia Zipprodt Award

**NATASHA KATZ** (*Lighting Designer*). Broadway credits include *An American in Paris* (Tony Award), *Gigi*, *Aladdin*, *The Glass Menagerie* (Tony Award), *Motown*, *Once* (Tony Award), *Follies*, *The Coast of Utopia: Salvage* (Tony Award) and *Aida* (Tony Award). Extensive designs Off-Broadway, at American regional theatres, concerts and permanent installations, opera and dance include Royal Opera House, Dutch National Ballet, San Francisco Ballet, American Ballet Theatre, New York City Ballet, Metropolitan Opera and NYC Opera. Awards: Tony, Drama Desk, Outer Critics, Hewes, WhatsOnStage, Joseph Jefferson, Ruth Morely Design and National Broadway Theatre awards.

**JOHN PETRAFESA, JR.** (*Sound Designer*) was the production sound engineer and/or associate sound designer for numerous productions of *Beauty and the Beast* including Broadway, Los Angeles, Toronto, U.S. National Tours II & III and the U.K. National Tour. Other theatrical design and engineering credits include *Elf*, *The Musical* (2012 U.S. Tour), *Under Fire* (2010 NYMTF), *The Music Man* (Broadway), *Guys and Dolls* (National Tour) and *Les Misérables* (Broadway and National Tour). John has also designed and/or consulted on numerous corporate, broadcast and special events. John is a director with Production Glue, LLC, a New York based creative and technical consulting agency.

**DAVID H. LAWRENCE** (*Hair Design*). Having worked on Broadway productions many years, David has had the pleasure of working with all of the best casts, crews and fellow designers on Broadway. This production of Disney's *Beauty and The Beast* for NETworks is no exception. Broadway: *Baby It's You*, *A Catered Affair*, *Rock 'N' Roll*, *Company*, *All Shook Up*, *Guys and Dolls*, *Tommy*, *A Funny Thing Happened on the Way to the Forum*, *The King and I*, *Grease*, *Death of a Salesman*, the new *42nd Street* and *The Full Monty*. David also designed the hair for two seasons of *Saturday Night Live*. David won the 1994 Outstanding Achievement award from Theatrecrafts International for his work on Disney's *Beauty and the Beast*. Thanks Paul Huntley, the late Bob Kelly, plus all who work so hard backstage nightly.

**RICK SORDELET** (*Fight Direction*). 53 Broadway shows including *The Lion King*, *Beauty and the Beast*, *Aida* among others. 52 first class productions all over the world. 100's of shows Off Broadway and Regional Theater. *Cyrano* the opera starring Plácido Domingo at the Met, The Royal Opera House, and La Scala in Milan, *Ben Hur Live* on tour all over Europe and in Rome ([www.benhurlive.com](http://www.benhurlive.com)). Film and television: *The Game Plan*, *Dan in Real Life*, *Hamlet* and 12 years as Chief Stunt Coordinator for *Guiding Light*. Edith Oliver Award for Sustained Excellence by the Lucille Lortel Foundation. Jeff Award for Outstanding Fight Direction for *Romeo and Juliet* for the Chicago Shakespeare Theater. Board member for the Shakespeare Theater of

New Jersey. Instructor at Yale School of Drama. Author of *Excalibur* and *Buried Treasure*.

**JIM STEINMEYER** (*Illusion Design*). According to *The New York Times*, Jim Steinmeyer is the "celebrated invisible man, designer and creative brain behind many of the great stage magicians of the last quarter century." His illusions have been featured by magicians Doug Henning, Siegfried and Roy, David Copperfield, Criss Angel, Ricky Jay and many others. Jim has created special illusions for Broadway, Off-Broadway, West End, and Las Vegas shows, including *Beauty and the Beast*, *Into the Woods*, *The Phantom of the Opera*, *Mary Poppins and Aladdin*, and for Ringling Brothers and Barnum and Bailey Circus. He's also the author of several books on the history of magic, including the bestseller *Hiding the Elephant*, along with *The Glorious Deception* and *The Last Greatest Magician in the World*. Jim lives in Los Angeles with his wife, television producer Frankie Glass.

**BASIL TWIST** (*Puppet Design*), originally from San Francisco, is a third generation puppeteer who lives and works in New York City. Broadway credits include *The Addams Family* and *The Pee Wee Herman Show*. Original creations: *The Araneidae Show*, *Symphonie Fantastique*, *Petrushka*, *Master Peter's Puppet Show*, *Dogugaeshi*, *La Bella Dormiente Nel Bosco*, *Behind the Lid*, and *Arias with a Twist*. Partnerships include The Spoleto Festival, Lincoln Center Festival, Lincoln Center's New Visions Series, The Los Angeles Philharmonic, The Japan Society and Gotham Chamber Opera. He premiered his second opera, *Hansel and Gretel*, with The Houston Grand and Atlanta Opera Companies. Recent collaborations include *A Streetcar Named Desire* with Lee Breuer at The Comedie Francaise. Awards: Obie Award, five UNIMA Awards for Excellence in Puppetry, two Bessie Awards, a Drama Desk Award, New York Innovative Theatre Award, and Henry Hewes Design Award, Guggenheim Fellow, an inaugural United States Artist Ford Fellow and an inaugural Doris Duke Performing Artist Award. He was honored with a festival of his original works in Washington, D.C.. Twist is the director of the Dream Music Puppetry Program at HERE in New York City. His "Rite of Spring," commissioned by Carolina Performing Arts, premiered as a part of Lincoln Center's White Light Festival. [www.basiltwist.com](http://www.basiltwist.com)

**SAM SCALAMONI** (*Associate Director*). Mr. Scalamoni is the director of the critically acclaimed national tours of *Elf the Musical*, which launched its 6th and 7th companies this year that crossed the U.S. He also directed the national tour of Nickelodeon's *Storytime Live!* for Broadway Across America (which broke box office records at Radio City Music Hall) and the national tour of *The Gazillion Bubble Show*. Mr. Scalamoni is the associate director of the current national and international tours of Disney's *Beauty and the Beast*, and he also supervised Broadway and mounted multiple companies worldwide. He was associate director for Elton John's *Lestat* and currently serves as the artistic director of Skyline Theatre Company, a professional non-profit theatre company in New Jersey. Currently in development is a new musical, *1000 Faces*, based on the life of film legend Lon Chaney and a stage adaptation of the MGM



musical *Summer Stock*. Mr. Scalamoni's direction of original works include the two original incarnations of Alan Menken's *Leap of Faith* in workshop, the original development workshop of *Mulan Jr.* (Disney Theatrical Productions), workshop presentations of *Sense and Sensibility* (Playwrights Horizons and Shakespeare & Company), workshops of the musical *At the Back of the North Wind* (Players Theatre, National Arts Club and The Village Theatre), a workshop of *The New Picasso* (New World Stages), *Treaty 321!* (Lucille Lortel), and *Fidelity Futurestage* (New World Stages for Richard Frankel Productions). Regionally, he recently directed *Les Misérables*, (SALT Award for best director of a musical and best musical of the year) and Agatha Christie's *An Unexpected Guest* (Broadway World Award for best director of a play), both at Cortland Repertory Theatre. Mr. Scalamoni is a proud member of The Stage Directors and Choreographers Society. For Tricia, Spencer and Mia

**CONNOR GALLAGHER** (*Associate Choreographer*) began as a performer in the Broadway company of *Beauty and the Beast*. Choreographer: first national tour of *Elf the Musical*, *Tangled* (Disney Cruise Lines), *The Robber Bridegroom* (Roundabout), *Bye Bye Birdie* (Goodspeed), *Into the Woods* (Public Theatre, Assistant Director), HIFA (Zimbabwe), Northern Stage, FringeNYC, NYMF, BCEFA. Dance Educator: Broadway Dancer Center, Take It From the Top. CCM Grad. UTPO. [www.connorgallagher.com](http://www.connorgallagher.com)

**JOHN MEZZIO** (*Music Coordinator*) has conducted several national tours including *State Fair* starring John Davidson, *Victor Victoria* starring Toni Tennille, *Seussical The Musical* starring Cathy Rigby, *Cinderella* starring Eartha Kitt and Deborah Gibson, the Royal National Theatre's revival of Rodgers & Hammerstein's *Oklahoma!* and *The Wedding Singer*. Additionally, Mr. Mezzio was Associate Conductor for Andrew Lloyd Webber's *Starlight Express* at the Las Vegas Hilton. John was Music Coordinator for several national tours including *Sweet Charity* starring Molly Ringwald, *Annie* starring John Schuck and Mackenzie Phillips, *Hairspray*, *The Producers*, and *Shrek the Musical*. He is currently the Music Coordinator for Disney's *Beauty and the Beast* and *Elf The Musical*.

**JESS GOUKER** (*Production Stage Manager*) is so excited to be back in the provincial town for a second season. Jess is a graduate of Ramapo College of New Jersey with a BA in Theatre, concentrating in Stage Management. National tours: *Beauty and the Beast* (ASM). New York: *False Solution* (SM) at La Mama, ETC., *Ocean in a Teacup* (ASM) at The June Havoc Theatre for the Midtown International Theatre Festival, *Wanderlust* (SM) at The Tank for the Association of Performing Arts Presenters Winter Conference and *Wanderlust* (ASM) at the Robert Moss Theatre for Planet Connections Theatre Festivity. She has worked regionally with The Weston Playhouse, Ogunquit Playhouse and North Shore Music Theatre.

**MUSIC THEATRE INTERNATIONAL** (MTIShow.com) is one of the world's leading dramatic licensing agencies, granting schools as well as amateur and professional theatres from around the world the rights to perform the largest selection of great musicals

from Broadway and beyond. MTI works directly with the composers, lyricists and book writers of these shows to provide official scripts, musical materials and dynamic theatrical resources to over 60,000 theatrical organizations in the U.S. and in over 60 countries worldwide. MTI is particularly dedicated to the idea of theatre as education and has created special collections for younger performers. The MTI Broadway Junior Collection® includes "JR." titles (60-minute musicals for performance by middle school children) and "KIDS" titles (30-minute musicals for performance by elementary school children). MTI School Editions™ are musicals that have been annotated for performance by high school students, and the Theatre for Young Audiences (TYA) Collection are 70-minute musicals designed for adults to perform for children. MTI ShowSpace.com is the theatre world's online community where practitioners and fans from around the world share advice, photos, videos, sets, props, costumes and more, to help bring their next productions to life.

**BROADWAY BOOKING OFFICE NYC** (*Tour Marketing*) is a leading theatrical tour booking, marketing and press company representing award-winning musicals and plays. Currently: *Jersey Boys*, Cameron Mackintosh's spectacular new production of Andrew Lloyd Webber's *The Phantom of the Opera*, *Les Misérables*, *Matilda The Musical*, *Beautiful – The Carole King Musical*, *A Gentleman's Guide to Love and Murder*, *The King and I*, *Donny & Marie Christmas*, *The Sound of Music*, *Fun Home*, *The Curious Incident of the Dog in the Night-Time*, NETworks presents Disney's *Beauty and the Beast*, *Love Letters* starring Ali MacGraw & Ryan O'Neal, and *The Rat Pack is Back!*. [www.bbonyc.com](http://www.bbonyc.com)

**THE BOOKING GROUP** (*Tour Booking*) is Broadway's premiere booking agency representing more than 18 Tony Award winning best musicals and plays since its inception in 1996. TBG has booked several long running tours such as the "Best Musical of the Century" *The Book of Mormon*, the most Tony Award winning musical in history Mel Brooks' *The Producers*, the worldwide hit *Mamma Mia!*, and the groundbreaking musical *Rent*. TBG is committed to bringing the best of Broadway to North America and beyond.

**KARY M. WALKER** (*Executive Producer*). NETworks since 2001. Formerly Executive Producer at Marriott Lincolnshire Theatre in Chicago. Founding board member National Alliance for Musical Theatre. Vietnam Veteran. Mr. Walker has been in show business for 40 years and has produced over 150 shows. He is delighted to have just celebrated 2 years of legal marriage to his partner of 34 years, Mr. James Morvay.

**SETH WENIG** (*Executive Producer*) has been with NETworks since its inception in 1995. He spearheaded the international tours of *Fosse* starring Ben Vereen and Ruthie Henshall. Seth has produced The Lincoln Center Theatre's Production of Rodgers and Hammerstein's *South Pacific* and The National Theatre's *War Horse*. Together with Cameron Mackintosh, Seth served as Executive Producer for both the US and UK tours of the National Theatre's *My Fair Lady*, The 25th Anniversary US tour of *Les Misérables* and the new *The Phantom of the Opera* tour. He is most proud of his greatest productions – Marlo and Camden.

**NETWORKS PRESENTATIONS LLC** (*Producer*), from its inception nearly 20 years ago, has been an industry leading producer and manager of touring musical theatre productions and remains committed to delivering quality entertainment to audiences worldwide. Having toured over 60 productions extensively throughout North America, NETworks is now expanding its tours into many international markets including South America, Greece, Italy, Turkey and South East Asia. Current touring productions include Cameron Mackintosh's *The Phantom of the Opera*, Disney's *Beauty and the Beast* (domestic and international productions), *Dirty Dancing*, *Blue Man Group*, and *Elf the Musical*. Upcoming touring productions include *Bullets Over Broadway*, *Once the Musical* and an international tour of *Shrek The Musical*.


<b>STAFF FOR BEAUTY AND THE BEAST</b>	
Executive Producer	
<b>Kary M. Walker &amp; Seth Wenig</b>	
<b>General Management</b>	
Gentry & Associates, Inc.	
Gregory Vander Ploeg	
Jamie Jennings, Tyler Soltis, Mary K. Witte, Steve Varon	
<b>Production Management</b>	
NETworks Presentations LLC	
Jason Juenker	
Laura Dieli, Hector Guivas, Dave Burch	
<b>Tour Marketing</b>	
Broadway Booking Office NYC	
Steven Schnepf, Temah Higgins,	
Kent McIngvale, Jenny Bates, Zach Stevenson, Scott Praefke	
<b>Tour Direction</b>	
THE BOOKING GROUP	
Meredith Blair	
Mollie Mann, Kara Gebhart, Brian Brooks, Rich Rundle	
www.thebookinggroup.com	
<b>Casting</b>	
Patricia Gentry and Bob Cline	
<b>Company Manager</b>	
Colin Byrne	

Production Stage Manager.....	Jess Gouker
Ass't. Stage Manager.....	Emily White
Head Carpenter.....	Eric Steele
Ass't. Director.....	Michael Whitney
Ass't. Choreographer.....	Chandon Jones
Ass't. Company Manager.....	Dan Fisher
Assoc. Scenic Designer.....	Christine Peters
Assoc. Lighting Designers.....	Sean Beach, Jon Goldman,
	Peter Hoerburger, Daniel Walker
Lighting Programmer.....	Sean Beach, John Dunkle
Assoc. Costume Designer.....	Christopher Vergara
Ass't. Costume Designer.....	Abigail Hahn
Assoc. Sound Designer.....	Tylor Foster, Eric Talorico
Carpenter.....	Keefe Kennedy
Flyman.....	Robert DiCandia
Head Electrician.....	Michael Latocha
Production Electricians.....	Barb Bartel,
	Matthew Charles Hrinko, Trevor Maynar, Erik Plath
Ass't. Electrician.....	Justin Petito
Head Audio.....	Ryan Motley
Ass't. Audio.....	Gavin Little
Head Properties.....	Anna Katharine Mantz
Head Wardrobe.....	Dani Lamb
Ass't. Wardrobe.....	Shoshana Latocha
Wigs/Hair Supervisor.....	Crysta Menefee
Dance Captain.....	Hayley Palmer
Fight Captain.....	Ben Cullen
Rehearsal Conductor.....	Nate Patten
Assoc. Synth Programmer.....	Brent Frederick
Dialect Coach.....	Claudia Hills-Sparks
Print Design, Printing.....	Marty Molina,
	Emily Balawejder
Radio and TV Spot Production.....	HMS Media
Video Production.....	HMS Media
Website.....	Pit Bull Interactive
Production Photography.....	Matt Murphy

Merchandising.....	Disney Theatrical Merchandise
Accounting.....	NETworks Presentations LLC
Tour Accountant.....	Laura Carey, CLA
Legal Services.....	F. Richard Pappas, Esq.
HR & Payroll Services.....	Human Resources Inc.
Cast Bus.....	Croswell VIP Coach
Crew Bus.....	Clarion Coach
Hotel Booking.....	Lisa Morris, Road Concierge

<b>For NETworks Presentations</b>	
Chief Executive Officer.....	Kenneth Gentry
Chief Operating Officer.....	Scott W. Jackson
President.....	Orin Wolf
Executive Vice President Production.....	Seth Wenig
Executive Assistant/Assoc. GM.....	Curt Owens
Director of Finance.....	John Kinna
Controller.....	Jennifer Gifford
Executive Producers.....	Angela Rowles, Kary Walker, Trinity Wheeler
Director of Booking.....	Charmaine McVicker
Engagement Manager.....	Esther Schwarzbauer
Director of Marketing/PR.....	Heather Hess
Senior General Manager.....	Gregory Vander Ploeg
General Managers.....	Jamie Jennings, Tyler Soltis,
	Mary K. Witte
Assistant General Manager.....	Steve Varon
Senior Production Manager.....	Jason Juenker
Production Managers.....	Laura Dieli, Hector Guivas
Associate Production Manager.....	Dave Burch
Music Coordinator.....	John Mezzio
Warehouse Manager.....	Brad Korff
Office Manager.....	Buddy Piccolino
Administrative Assistant.....	Kevin Persaud

<b>Credits</b>	
Audio Equipment by PRG Audio; Lighting Equipment by PRG Lighting;	
Scenery Constructed by 3DX Scenic Studios; Automated Scenery by:	
3DX Scenic Studios; Drops Painted by Joe Forbes, Scenic Arts Studios;	
Illusion Construction by Entertainment Design and Fabrication; Props	
Construction by Spoon Group; Puppet Construction by Tandem Otter	
Productions; For Tandem Otter: Barbara Busackino, Producer. Wigs and	
Prosthetic by Atelier Bassi GmbH with Sari Rambut Wig Production and	
Toga; Additional wigs by wigfactoryusa.com; Specialty Props by Tom	
Talmon Studios.	
Rehearsed at Alvin Ailey Dance Theater	

<b>MUSE-UP PROVIDED BY</b>	
	
<b>Special Thanks to</b>	
Classic Center Theater, Athens, GA	
NEURO TOUR - Official provider of	
Physical Therapy services	
Keyboard and Synth technology for this show is	
powered by the Muse Research RECEPTOR	
Insurance Broker Services	
Maury Donnelly and Parr, Inc.	
Robert B. Middleton, Sr and Meghan Shriver	
Tax & Financial Consulting, Accounting Services,	
IT Services	
CliftonLarsonAllen LLP	
George Wilson, Linda Rubenstein	
Pat Guerieri, Tim Pizza	
Financial Services and banking arrangements by	
<b>SunTrust Bank</b>	
Stock and Amateur rights for	
Disney's <i>Beauty and the Beast</i> are represented by	
Music Theater International, New York City.	
212-541-4684 www.mtishows.com	

**ONLINE**

**www.BeautyandtheBeastontour.com**

Like us on Facebook **Beauty and the Beast on Tour**

Follow us on Instagram **@BeautyandtheBeastonTour**

Follow us on Twitter **@BeautyOnTour**

**#beautyandthebeastontour**



All stage work performed by employees represented by IATSE.



UNITED SCENIC ARTISTS represents the designers and scenic painters for the American Theatre.



The Director and Choreographer are members of the Stage Directors and Choreographers Society, an independent national labor union.



# ***OCTONAUTS LIVE!***

## **DIVE INTO ADVENTURE AT TPAC**

### **SUNDAY, NOVEMBER 6**

Explore. Rescue. Protect! "Octonauts" announces a new, action-packed, and interactive theatre show, *Octonauts and the Deep Sea Volcano Adventure*, performing at the Tennessee Performing Arts Center on Sunday, November 6, at 5:00 p.m.

*Octonauts and the Deep Sea Volcano Adventure* is a high-tech production featuring costume characters and animated projections to a massive screen on stage. With new and fan-favorite songs by the entire Octonauts eight-member crew – including Captain Barnacles, Lieutenant Kwazii, and Medic Peso—you're invited aboard an underwater quest through a world full of adventure, interactivity, and tons of sea-life surprises.

The live show, based on the hit television show on Disney Junior and the popular children's book series, consists of two acts of 30 minutes, plus a brief intermission. For more information, visit [www.OctonautsLiveUS.com](http://www.OctonautsLiveUS.com).



Photo by Dan Tsantilis



**Tickets on sale now at [TPAC.org](http://TPAC.org), by phone at 615-782-4040, and at the TPAC Box Office, 505 Deaderick Street, in downtown Nashville.**

TPAC.ORG is the official online source for buying tickets to TPAC events.

# JANE LYNCH

*See Jane Sing*

*Broadway with a Twist!*



No stranger to the stage, actress and comedian **Jane Lynch** brings her live musical comedy show, *See Jane Sing*, in which she mixes her signature style with beloved Broadway songs, to Nashville for a one-night-only performance.

Lynch, accompanied by a five-piece band, builds the evening around her musical chops and comedic wit and charm. Joining her on stage for a portion of the show are special guests **Kate Flannery** of *The Office*, who plays Lynch's mischievous vocal partner and **Tim Davis**, *Glee*'s former vocal arranger. During the live performance, the Emmy Award and Golden Globe winner takes audiences on a musical journey through a world of songs from Broadway to cabaret.

"*See Jane Sing* is one of the most joyous experiences of my career," Lynch says. "I love everything about theatre and performing in front of a live audience is so rewarding." Lynch first cut her theatrical teeth at The Second City, Steppenwolf Theatre. In addition to hosting *Hollywood Game Night*, her recent film and television credits include *A.C.O.D.*, *Three Stooges*, *Wreck-It Ralph*, *Julie & Julia*, *Shrek Forever After*, *The Post Grad Survival Guide*, *Paul and Brownie Masters*, *Glee*, and *Angel from Hell*.

**Catch Jane Lynch's *See Jane Sing* at TPAC's Polk Theater on June 15, 2016, at 7:30 p.m.**

**TPAC.ORG/Shows • 615-782-4040**

**TPAC Box Office • Groups of 10 or more, please call 615-782-4060**

TPAC.ORG is the official online source for buying tickets to TPAC events.



Visit TPAC bars to enjoy this irresistible beverage for Disney's BEAUTY AND THE BEAST:

## "THE ENCHANTRESS"

Vodka, Triple Sec, Sweet and Sour,  
Pineapple Juice, Sprite



Bars are located in TPAC's Polk Theater lobby on the Orchestra level and Jackson Hall lobbies on the Orchestra and Tier levels. Be sure to visit the beautiful Bar Seven located on the Orchestra level the next time you are inside Jackson Hall.

# Uniquely Nashville.

Find our city's best arts and entertainment bets, can't-miss events, artist interviews, society news and all things unique to Middle Tennessee **every Sunday inside Portfolio** and online at [Tennessean.com](http://Tennessean.com).



## THE TENNESSEAN

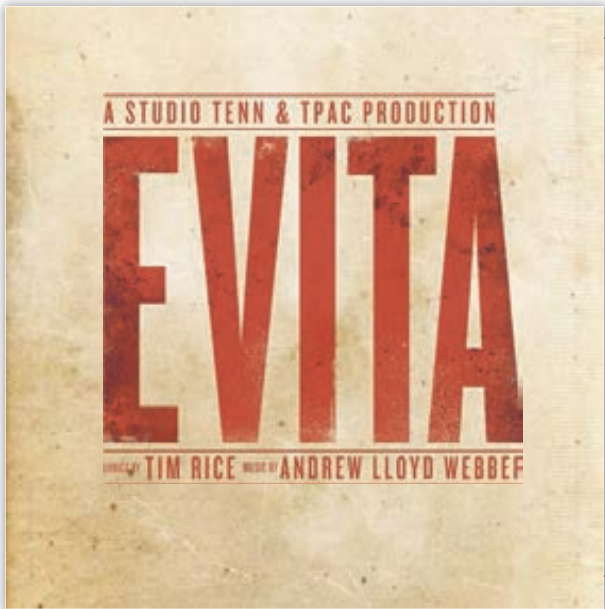
PART OF THE USA TODAY NETWORK

**Subscribers:** [Tennessean.com/Register](http://Tennessean.com/Register)

**Non-Subscribers:** [Tennessean.com/Subscribe](http://Tennessean.com/Subscribe)

# You can get great deals on Broadway, concerts, and more!

Does your employer, civic group,  
or school offer TPAC discounts?  
Contact us to find out.  
**TPAC has four great programs  
that help you save money:**



## **Evita will captivate you at TPAC September 9-18, 2016!**

Activist, suffragist, and venerated celebrity, Eva Perón captivated a nation as Argentina's First Lady. Broadway powerhouse Eden Espinosa stars in Studio Tenn's custom-designed presentation, a collaboration with TPAC built right here in Music City, using the finest talents from Nashville and New York.

**Group tickets start at just \$20.  
Visit [TPAC.ORG/GroupReservations](http://TPAC.ORG/GroupReservations) or call  
615-782-4060 to reserve your tickets today!**

# THANK YOU

to Disney's BEAUTY AND THE BEAST audience members  
who participated in TPAC's Group Sales programs and purchased tickets by May 17, 2016.

Abenity Perks and  
Discount Program  
Affinion Group  
Amazing Grace  
Apostolic Church  
Amy Donnafield  
Amy Johnson  
Angela Smith  
Ann Carroll School  
of Dance  
Ann Staples  
Aquinas College  
Audience Of One  
Productions  
Austin Peay State University  
Averitt Express  
Ayers Group Travel  
B.J. Allgood  
Barry Hardy  
Bass, Berry & Sims  
Belmont University  
Bennie Dillon Social  
Committee  
Blue Cross Blue Shield of TN  
BMI Music  
Bob Rogers Travel  
Brandi Grimsley  
Brooke Jagers  
C & C Tours  
Mr. C. Nelson Bailey  
C Tech  
CalsonicKansei North  
America, Inc.  
Casey Gallas  
Caterpillar Financial  
Services  
Centennial Healthcare

Centennial Shared Services  
Change Healthcare  
City of Franklin Employees  
Courtney Eoff  
Cracker Barrel  
Curtis Watkins  
Dana Maynor  
Debbie Bransford  
Delek US  
Diana Rae's Voice &  
Performance Studio  
Diane Davis  
Dollar General Corporation  
Elite Dance Studio  
Entelliment LLC  
Erica Brotherton  
Events & Adventures  
Foresters  
Frank Town Open Hearts  
Gary Podgorski  
Genesco  
Gilda's Club  
Guaranty Trust  
HCA Inc.  
Healthways  
Heather Wall  
Hillcrest Elementary School  
Jamie Walker  
Jeanie and Kristin Luna  
Jenna Malizia  
Joe and Judy Barker  
Household  
Judith Sullivan  
Kennedy North  
Boulevard Group  
Kimberly Glover  
Kimberly Schwind

Kraft CPAs  
Kristina Hibdon  
ktdid kreations & events  
Laura Amiralian  
Leslie Stewart  
Lifeway Christian Resources  
Lighthouse Christian School  
Lily Lohora  
Liz Lunn  
Loews Hotels  
Lynn Schumacher  
Mandi Ashley  
Mary Lou Ball  
Mary Mefford  
Meagan Tate  
Megan Turner  
Mentor High School  
Metro Nashville  
Michael McReynolds  
Michele Richie  
Middle Tennessee  
State University  
Motlow State  
Community College  
Nashville American  
Federation of Musicians,  
Local 257  
Nashville Area Chamber  
of Commerce  
Nashville Christian School  
Nashville Homeschool  
Calendar  
Nissan North America  
Patty Wilde  
People's Bank  
Rachael Rainwater  
Rebekah Willoughby

Reca Barwin  
Regions Bank  
Sandy Hubbard  
Shara Watkins  
Skyline Medical Center  
St. Luke's Community House  
State Farm Insurance  
SunTrust  
Susan Kulp  
Tennessee State University  
Thomas Tours  
TPAC Education  
TPAC Friends and Family  
Trevecca Nazarene  
University  
United Southern Bank  
US Military Members  
UT Extension Central  
Region, Family &  
Consumer Sciences  
Vanderbilt Medical Center  
Vanderbilt University  
Victoria Gallagher  
Walker Valley High School  
Waller  
West Harpeth  
Christian Tutorial  
Western Kentucky  
Regional Migrant  
Education Program  
Whitney Moody  
Dr. William A Robinson  
Young At Heart  
Temple Church  
Young Professionals  
Chamber of Nashville



©2015 Porsche Cars North America, Inc. Porsche recommends seat belt usage and observance of all traffic laws at all times. Optional equipment shown is extra.



Porsche recommends **Mobil 1** and **MICHELIN**

**Legendary Porsche performance with four passengers. We're definitely defying the laws of something.**

**The Panamera. Experience pure Porsche performance for four.**

Porsche of Nashville  
1580 Mallory Lane  
Brentwood, TN 37027  
(855) 409-2487  
[www.porscheofnashville.com](http://www.porscheofnashville.com)



# Blair Concert Series 2015-2016

**The Blair School of Music**  
bringing artistry  
to education

For information about our free faculty  
and student performances,  
guest artists, lectures, master  
classes, and more,  
visit the Blair website at  
*[blair.vanderbilt.edu](http://blair.vanderbilt.edu)*

VANDERBILT  Blair School of Music

2400 Blakemore Avenue • Nashville, TN 37212

Complimentary valet parking and  
FREE self-parking for most events





We believe in second chances



DOING  
THE MOST  
GOOD™

Learn more about how  
we fight poverty in  
Middle Tennessee  
by visiting  
[MoreThanAKettle.org](http://MoreThanAKettle.org)





FRIENDSHIP, CONFIDENCE  
AND ALL THAT JAZZ  
— BECAUSE OF —  
**BALLET**

NEW  
**STUDIO  
DIVISION**

AGES 8-18

ballet • jazz • hip hop  
musical theater

*no previous dance  
experience required*

**NASHVILLE  
BALLET**

PAUL VASTERLING, Artistic Director

TO LEARN MORE VISIT

[nashvilleballet.com/school](http://nashvilleballet.com/school)

IN THE FUTURE YOU'LL HAVE AN  
**AMAZING WEBSITE**



**CALL US TODAY**

BECAUSE TOMORROW  
IS THE FUTURE  
AND  
WE PROBABLY NEED TO GET STARTED

**615.370.1530**

**ICGLINK**

[www.ICGLINK.com](http://www.ICGLINK.com)

**SOUND SOLUTIONS**

*For Better Hearing*



**BRENTWOOD  
HEARING CENTER**

5544 Franklin Pike, Suite 100  
Nashville, Tennessee 37220  
*(Just north of Brentwood at the  
Old Hickory I-65 interchange)*

*Providing hearing  
solutions that enable you  
to hear EVERY sound....  
from the downbeat  
to the final encore!*

*Audiologists:*

Anne T. Boling, M.Ed. CCC-A

Tania Williams, Au.D.

Kimberly R. Mozingo, Au.D.

**(615) 377-0420**

[brentwoodhearingcenter.com](http://brentwoodhearingcenter.com)

**LANCASTER  
CHRISTIAN  
ACADEMY**

**WE CELEBRATE THE ARTS**

CALL NOW TO BRING YOUR CHILD'S FUTURE 615-223-8191

**DANCE PERFORMANCES**

**CHOIR**

**COFFEE HOUSE PERFORMANCES**

**FUN DRAMA COURSES**

**CAPTIVATING MUSICALS**

**DYNAMIC PLAYS**

**HUMAN LIFE VIDEOS**

**ELEMENTARY DRAMA SKITS**

**THRIVING ARTS PROGRAM**

**AN OUTRAGEOUSLY FUN SCHOOL WHERE KIDS GROW IN THE LORD**

**CONTACT INFORMATION**

Lancaster Christian Academy  
www.lancasterchristianacademy.org  
1340 Sevier Way  
Nashville, TN 37203  
P 615 223 8191  
F 615 223 8192

Early Learning Center  
1911 Lanning Circle  
Gallatin, TN 37066  
P 615 223 8191  
F 615 223 8192

LCA

**LANCASTER  
CHRISTIAN  
ACADEMY**

Instagram YouTube Twitter Facebook



# FlexMBA

- Finish in 12 months
- Newly revised and integrated curriculum
- Accelerated cohort opportunity
- Online or on-campus
- Career and professional development seminars
- Network with other business leaders
- Global opportunities—study abroad options

I AM *true***BLUE**

JONES COLLEGE OF BUSINESS  
[www.mtsu.edu/mba](http://www.mtsu.edu/mba) • (615) 898-2964

AA/EEO/disability/vet

**MIDDLE  
 TENNESSEE**  
 STATE UNIVERSITY





Old Natchez Country Club is a beautiful venue for many social occasions such as:

- \* Wedding Receptions
- \* Rehearsal Dinners
- \* Bridesmaid Luncheons
- \* Holiday Parties
- \* Fundraising Gala's
- \* Corporate and Charitable Golf Outings

Our central location in Williamson County along with the beauty of the setting and first class service make Old Natchez Country Club the ideal venue for your special event.

115 Gardengate Drive, Franklin, TN 37069  
 615-373-3200 • [www.oldnatchezcc.com](http://www.oldnatchezcc.com)



**ILLUMINATING THE PAST  
 INSPIRING THE FUTURE**

**VISIT ANDREW JACKSON: BORN FOR A STORM**

*Bold, interactive exhibit explores Jackson's rise to power and his impact on the U.S.*

**Was He One of Our Greatest Presidents?  
 You Decide!**



**AGE OF JACKSON**

4580 Rachel's Lane  
 Nashville, Tennessee  
 615-889-2941  
[www.thehermitage.com](http://www.thehermitage.com)

Let me hear from me  
 I am very busy  
 military family &c

Facebook, Twitter, Pinterest icons





HOPE  
LIVES  
HERE



NASHVILLE  
RESCUE MISSION

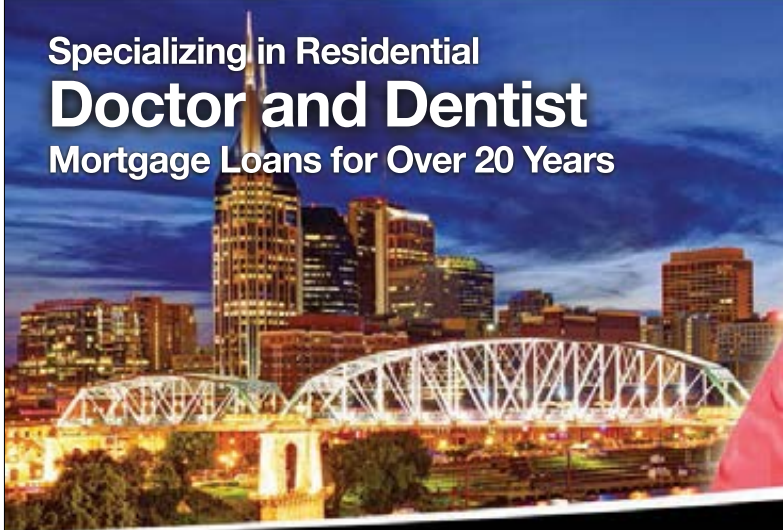
For more information visit  
[nashvillerescuemission.org](http://nashvillerescuemission.org)

Choose the **Experience & Stability** of Your Neighbor with **20 Years** Mortgage Experience

**ALoanwithAlene.com**

Your Lender for **LIFE**

Specializing in Residential  
**Doctor and Dentist**  
Mortgage Loans for Over 20 Years



**Alene Gnyp**  
**Mortgage Loan Specialist**

615.582.2334 NMLS #659293

The  
**B·A·N·K**  
OF  
NASHVILLE

*We're here to get you there.*

a division of **SYNOVUS BANK**  
MEMBER FDIC



The Bank of Nashville is a division of Synovus Bank. Synovus Bank, Member FDIC, is chartered in the state of Georgia and operates under multiple trade names across the Southeast. Divisions of Synovus Bank are not separately FDIC-insured banks. The FDIC coverage extended to deposit customers is that of one insured bank.

# MASTERING THE ART OF PRINT



OFFSET PRINTING • DIGITAL PRINTING • WIDE FORMAT PRINTING • BINDERY & FINISHING

1835 Air Lane Drive, Nashville, TN • [www.lithographicsinc.com](http://www.lithographicsinc.com) • 615-889-1200

 lithographics-inc

 @Lithographics

 lithographics-inc

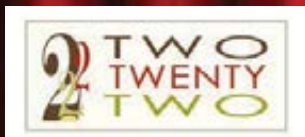
 [info@lithographicsinc.com](mailto:info@lithographicsinc.com)



# Encore Dining



**1808 Grille** Located in the Hutton Hotel, 1808 Grille's season menus blends traditional Southern dishes, with global flavors. Award-winning wine list, as well as full bar and bar menu. Whether you are looking for a fine dining experience or a place to be part of the scene, 1808 Grille is the perfect place to meet, dine, and linger. Forbes Four Star. Complimentary Self parking. 1808 W. End Avenue, Nashville, TN Ph: (615) 340-0012 | [1808grille.com](http://1808grille.com)



## Two Twenty-Two Grill

Our hot, made-from-scratch lunch is sure to satisfy your appetite. Ready-made options prepared daily, including wraps, sandwiches, salads, baked goods, and more. Located inside the Country Music Hall of Fame.

Ph: (615) 291-6759 | 216 5th Ave. S. | Open daily 9 a.m.-5 p.m.



## Bajo Sexto Taco

Under the direction of Oaxacan-born chef Kaelin Ulrich Trilling, the taqueria offers a limited menu of Mexican cuisine, including tacos and flautas; hand-made tortillas; wine on tap, beer, and margaritas. Located in the Country Music Hall of Fame.

Ph: (615) 577-7717 | 216 5th Ave. S. | [BajoSextoTaco.com](http://BajoSextoTaco.com) | Open Daily ~ hours vary



## Fleming's Prime Steakhouse & Wine Bar

Fleming's Nashville is an ongoing celebration of exceptional food & wine, featuring the finest prime steak and an award-winning wine list. We are located across from Centennial Park at 2525 West End Ave.

Ph: (615) 342-0131 | [www.flemingssteakhouse.com/locations/tn/nashville](http://www.flemingssteakhouse.com/locations/tn/nashville)



## Goozy Dessert Bar and Café

Nashville's first dessert bar, featuring molten chocolate cakes, housemade gelato, inventive desserts, artisan grilled cheeses, gourmet coffee, wine, craft beer and cocktails. Located in Green Hills across from Orvis and Noshville.

Ph: (615) 297-0274 | Visit [www.gotogoozy.com](http://www.gotogoozy.com) for hours and directions.



## Rodizio Grill - The Brazilian Steakhouse

Enjoy the authentic flavors, style and warm alegria of a Brazilian Churrascaria (Steakhouse). Rodizio Grill features unlimited appetizers, gourmet salads, side dishes and a continuous rotation of over a dozen different meats carved tableside by our Gauchos. Banquet seating and private dining available. Valet Parking.

Ph: (615) 730-8358. 166 Second Ave. N. | Reservations Accepted | [rodiziogrill.com/nashville](http://rodiziogrill.com/nashville)



## The Melting Pot - a Fondue Restaurant

Where fun is cooked up fondue style. Join us for Cheese and Chocolate fondue or the full 4-course experience. Casually elegant - Always Fun. Open 7 Days for dinner. Sundays after the Matinee. Valet Parking. Reservations Recommended.

Ph: (615) 742-4970 | 166 Second Ave. N. | [www.meltingpot.com/nashville](http://www.meltingpot.com/nashville)



## Ravello

Enjoy a dinner inspired by the Italian coastal town of Ravello. Begin with selections from our antipasti bar, sample housemade pasta—all in a lush garden setting. Located in Gaylord Opryland Resort. Complimentary parking available.

Ph: (615) 458-6848 | [GaylordOpryland.com/Dining](http://GaylordOpryland.com/Dining)



## Jimmy Buffett's Margaritaville Nashville

On the corner of Fourth & Broadway, Margaritaville has everything... authentic southern food, the best bars & the caliber of music that's expected in Nashville.

Ph: (615) 208-9080 | [www.MargaritavilleNashville.com](http://www.MargaritavilleNashville.com)

[Sales@MargaritavilleNashville.com](mailto:Sales@MargaritavilleNashville.com)



## Texas de Brazil

Texas de Brazil steakhouse features a gourmet salad area containing more than 50 items, as well as continuous servings of deliciously seasoned beef, lamb, pork, chicken and sausage, all carved tableside. Group dining rates available. Valet parking.

Ph: (615) 320-0013 | 210 25th Ave. N. Suite 110 | [www.texasdebrazil.com](http://www.texasdebrazil.com)



## Trattoria Il Mulino

Trattoria Il Mulino, the acclaimed casual chic restaurant from iconic Il Mulino New York, debuts in Nashville. Enjoy traditional Italian cuisine featuring signature dishes, seafood, pasta, and a selection of 190 wines. BUON APPETITO!

Ph: (615) 620-3700 | [trattoriailmulinoonashville.com](http://trattoriailmulinoonashville.com)

# Advertise in the “Performing Arts Magazines”

We have a captive  
advertising audience  
at every live  
performance.



For Advertising Info.

Please call: 615-373-5557

[www.GloverGroupEntertainment.com](http://www.GloverGroupEntertainment.com)



15/16 SEASON  
LIVE ON STAGE



SEPT. 17 - OCT. 4, 2015



DEC. 3 - 20, 2015



FEB. 18 - MAR. 6, 2016



APR. 14 - MAY 1, 2016



JUNE 3 & 4, 2016

**BUY TICKETS NOW!**

CALL (615) 541-8200  
[STUDIOTENN.COM](http://STUDIOTENN.COM)

15  
16  
SEASON



"The most **COMPELLING** and **THRILLING**  
new musical in years!" — *New York Magazine*

From the Pulitzer Prize & Tony Award-winning Creators of  
*Next to Normal*, the Director of *Rent* and the Producer of *Wicked*

# IF/THEN

A New Musical

Life in a city  
is full of infinite  
possibilities.

This is the  
musical about  
all of them.

**JUNE 7-12**  
**ON SALE NOW!**

**TPAC.ORG/IfThen • 615-782-4040**

TPAC Box Office • GROUPS OF 10 OR MORE CALL 615-782-4060

TPAC.ORG is the official online source for buying tickets to TPAC events.  
Parental guidance is suggested.

Photos: Joan Marcus; Illustration: Zina Saunders

Broadway Series  
sponsored by



The Tennessee Performing Arts Center is an accessible  
facility with a variety of services. For more information,  
see page 60 of this playbill or visit [TPAC.org](http://TPAC.org).

**Disney's *Beauty and the Beast* matinee,  
SUNDAY, JUNE 5, 2016**

OPEN CAPTIONING: Tennessee Captioning

The Tennessee Performing Arts Center  
gratefully acknowledges

## 2015-16 SPONSORS

Broadway Series Title Sponsor:



Premier Partners (\$100,000+)



RAYMOND JAMES®



THE TENNESSEAN

Signature Partners (\$50,000+)



Sustaining Partners (\$25,000+)

BUTLER | SNOW



Contributing Partners





**TPAC gratefully acknowledges the following organizations and individuals for gifts and pledges received from May 2015 – May 2016.**

These gifts support TPAC Education, performing arts programs, and special projects. For more information about donor benefits and sponsorship opportunities, or to notify us of any errors or omissions, please contact TPAC Development at 615-687-4315.

**BOARD OF DIRECTORS**

C. Dale Allen  
Barbara T. Bovender  
John Cody  
Ronald L. Corbin  
Elizabeth S. Courtney  
Ansel L. Davis  
Emanuel J. Eads  
Rod Essig  
Eddie George  
J. Reginald Hill  
Martha R. Ingram  
Martha Ivester  
Dr. Nola Jones  
Tracy Kane  
Christine Karbowiak  
Bill Lynch  
Melvin J. Malone  
Marcus McKamey  
Sherri Neal  
Nathan Poss  
Jim Schmitz  
Larry Stessel  
Andrew Tavi  
Rhonda Taylor  
Claire Tucker  
Dr. Philip Wenk  
Gail Carr Williams  
Uzi Yemin

**GOVERNMENT, CORPORATE, AND FOUNDATION CONTRIBUTORS**  
as of May 10, 2016

**\$50,000+**  
Bank of America  
CMA Foundation  
The Community Foundation of Middle Tennessee  
Delta Dental of Tennessee  
Google, Inc.  
HCA Foundation on behalf of HCA and the TriStar Family of Hospitals  
Metro Nashville Arts Commission  
The NewsChannel 5 Network  
Nissan North America, Inc.  
Raymond James  
The Tennessean  
Tennessee Arts Commission

**\$25,000 – \$49,999**  
Butler Snow  
Corrections Corporation of America  
Dollar General Literacy Foundation  
Monell's Dining and Catering Regions Bank  
Service Management Systems  
Vanderbilt University  
XMi Commercial Real Estate

**\$10,000 – \$24,999**  
Anonymous  
511 Group, Inc.  
BlueCross BlueShield of Tennessee  
Bridgestone Americas Tire Operations, LLC  
Bridgestone Americas Trust Fund  
Brown-Forman  
Caterpillar Financial Services Corporation  
Coca-Cola Bottling Company Consolidated  
Dollar General Corporation  
Gannett Foundation  
Grand Avenue  
Grand Central Barter  
HCA-Caring for the Community  
Ingram Industries  
Liberty Party Rental  
The Mall at Green Hills  
MEDHOST  
The Memorial Foundation  
National Endowment for the Arts  
NovaCopy  
Premiere Properties Group, LLC  
Mary C. Ragland Foundation

Robert K. and Anne H. Zelle Fund  
for Fine and  
Performing Arts\*  
Ryman Hospitality Properties  
Foundation  
Travelink, American  
Express Travel

**\$5,000 – \$9,999**  
Adams & Reese LLP  
Baulch Family Foundation  
Bonnaroo Works Fund  
Community Health Systems Foundation  
Delek Fund for Hope\*  
Earl Swensson Associates, Inc.  
Ernst & Young LLP  
Joel C. Gordon & Bernice W. Gordon Family Foundation\*  
JohnsonPoss  
Landis B. Gullett Charitable  
Lead Annuity Trust  
Middle Tennessee Performing Arts H.O.T. Support Fund  
Nashville Convention and Visitors Corporation  
Nashville Predators Foundation  
Piedmont Natural Gas  
Premiere Speakers Bureau, Inc.  
Publix Super Markets Charities  
The Rechter Family Fund\*  
Sargent's Fine Catering  
SunTrust Bank, Nashville  
Waller  
Washington Foundation  
Woodmont Investment  
Counsel, LLC

**\$2,500 – \$4,999**  
Aladdin Industries Foundation, Inc.  
Athena Distributing Company  
Best Brands, Inc.  
Creative Artists Agency  
Crumb de la Crumb  
EBS Foundation  
Enterprise Holdings Foundation  
Samuel M. Fleming Foundation  
Patricia C. & Thomas F. Frist  
Designated Fund\*  
Minuteman Press  
Kendra Scott  
Irvin and Beverly Small Foundation  
South Arts

**\$1,500 – \$2,499**  
The Atticus Trust  
Ezell Foundation  
Hard Rock Cafe  
Puckett's Grocery & Restaurant

**\$500 – \$1,499**  
American Paper & Twine Charitable Fund  
Amerigo  
Cabot Creamery Cooperative of Vermont  
Fleet One, LLC  
The Franklin Center for Skin & Laser Surgery  
The Dorothy Cate and Thomas F. Frist Foundation  
Glover Group Entertainment  
Kraft CPAs  
Kroger Company  
Loews Hotels  
Morton's The Steakhouse, Nashville  
Nashville Arts & Entertainment Magazine  
Nfocus  
Omni Nashville Hotel  
Purity Foundation  
Rodizio Grill The Brazilian Steakhouse  
Sprinkles Cupcakes  
Wright Travel Agency

**\$250 – \$499**  
C-Tech Controls  
Law Office of  
Michael K. Williamson  
Louisiana-Pacific Foundation  
Microsoft

Millennium Security Services  
Miss Kitty's Bed and Bath

**INDIVIDUAL CONTRIBUTORS**  
as of May 6, 2016

**CHAIRMAN'S CIRCLE**  
**\$10,000 +**  
Julie and Dale Allen  
Mr. and Mrs. Jack O. Bovender Jr.  
Anita and Larry Cash  
Eva-Lena and John Cody  
Martha R. Ingram

**PRODUCER'S CIRCLE**  
**\$5,000 – \$9,999**  
Mr. and Mrs. David J. Baulch  
Mr. and Mrs. Robert E. Baulch Jr.  
Mr. and Mrs. Robert E. Baulch III  
Kelly and Richard Crook  
Dr. and Mrs. Jeffrey Eskind  
Beth Fortune and Debbie Turner  
Chuck Hall  
John Reginald Hill  
Mrs. Victor S. Johnson Jr.  
Mr. and Mrs. Victor S. Johnson III  
Kathleen and Tim O'Brien  
Mr. and Mrs. Ben R. Rechter  
Judy and Steve Turner  
Neil and Chris Tyler

**APPLAUSE SOCIETY**  
**\$1,250 – \$4,999**  
Mr. and Mrs. Craig J. Andreen  
Colleen and Beth Atwood  
Melinda and Jeff Balser  
Mr. and Mrs. Joseph Barker  
Jeffrey and Barbara Basalyga  
Kevin Bay  
Dr. Steven Bengelsdorf  
Marla Blessey  
Dr. and Mrs. Frank H. Boehm  
Mary and Ron Buck  
Michelle and Paulus Buijsman  
Melvin and Shirley Butler  
Gary Bynum  
Andrea Carlton  
Drs. Toni and Timothy Carlton  
Anthony and Diane Carroccia  
Mr. and Mrs. Christopher John Casa Santa

Elizabeth and Jerone Cecelic  
Mrs. William S. Cochran Sr.  
J. Chase Cole  
Marjorie and Allen Collins  
Ronald L. and Brenda J. Corbin  
Mr. and Mrs. Richard Courtney  
Pam and Louis Cuccia  
Mary Britton Cummings  
and Joseph Cummings  
Mildred and Richard Darragh  
Jana and Ansel Davis  
Marty and Betty Dickens  
Barbara and Emanuel Eads  
Wendy and Mark Eddy  
Billy and Jamie Eskind  
Jane and Richard Eskind  
and Family  
Seth and Judy Eskind Household  
Laurie and Steven Eskind  
Shary and Rod Essig  
Robert Evans  
Linda and Miles Ezell  
Robert Finn and Gary Lingofelter  
Mrs. Charles C. Fowler Jr.  
Dr. and Mrs. Thomas F. Frist Jr.  
Dr. and Mrs. Matt Gorham  
Michael J. Grainger  
John Mack Green  
Tracy Guarino and Joseph Calabrace  
Gail Guindazola  
Carolyn and Terry Hamby  
Becky Harrell  
Lisa Hartman  
Dr. and Mrs. Stephen L. Houff  
Rick Isaacson  
Teresa and Andre Jaeckle  
Timothy and Stefanie Jakobs  
Dr. Angela Jefferson  
Susan and Bill Joy

Joseph Judkins  
and Renée Conde  
Ray and Rosemarie Kalil  
Jacqueline Kelly  
Lee and Glenda Kraft  
Michael D. and Kimberly M. Law  
The Honorable Thomas and Terri Lewis  
Mr. and Mrs. Bill Lynch  
Spence and Leigh Madell  
Teresa and Reagan Major  
Mr. and Mrs. William Maksymowicz  
Melvin Malone  
Diane and Frank May  
Sheila and Richard McCarty  
Charles McDowell  
Marcus McKamey  
Susan and Michael McKay  
Mr. and Mrs. Michael Ray McWherter  
Robert and Yin Mericle  
Alisa Miles  
Lisa and Timothy Moore  
Teresa and Mike Nacarato  
Dr. and Mrs. Mathew Ninan  
Dr. Casey and Mrs. Holly Noble  
Sherry Parsons  
Randall Phillips  
Cathy and Craig Polkow  
Mr. and Mrs. Dale W. Polley  
Nathan Poss  
Wells Richardson and Jane Bowlin  
Carla Robertson  
Mark and Carla Rosenthal  
Anne and Joseph Russell  
Dr. Norman Scarborough and Ms. Kimberly Hewell  
Michelle and Jim Schmitz  
Janet and William Schock  
Dr. and Mrs. Timothy P. Schoettle  
Catherine and Tom Sinkewicz  
Sloan Family  
Mr. and Mrs. Irvin Small  
Rebecca and William Smith  
Debbie and Scott Snoyer  
Ronnie Steine and Beverly Keel  
Sara and Larry Stessel  
Deborah and James P. Stonehocker  
Lauren and Andrew Tavi  
Mona and David M. Tehle  
Andrea and Jim Tothacer  
Sarah Trahern and Wayne Flatt  
Byron and Aleta Trauger  
Dianne and Tom True  
Claire Whitfield Tucker  
Mr. and Mrs. Cal Turner III  
Lyn N. Walker  
Greta and Jim Walsh  
Dr. and Mrs. Philip A. Wenk  
Mrs. John Warner White  
David and Gail Williams  
Donald R. Williams and Richard W. Zelek  
Dallas and Fleming Wilt  
Jim and Maureen Wynalek  
Kurt Zettel and Anna Burgner  
Denise and Victor Zirilli  
Kathleen M. Zuccaro

**DIRECTOR'S CIRCLE**  
**\$700 – \$1,249**  
Dr. and Mrs. Jeffrey T. Adams  
Mary Bass  
Bob and Margaret Beck  
Suzanne Bradford and Judy Lojek  
Mr. and Mrs. Frank M. Bumstead  
Michael and Pamela Carter  
Kerri Cavanaugh and Michael Schlosser  
Drs. Walter and Deborah Clair Bess Clemons  
Jane and Bill Coble  
Janice J. Compton  
Ms. Andrea Conte and The Honorable Phil Bredesen  
Beth Crabb  
Anna Catherine Davenport  
Edward J. DeBartolo Jr.



Alice and Walton Denton  
 Fred Dettwiller  
 Pam Dishman  
 Dr. James E. and  
 COL Beverly E. Edwards  
 Robert Eisenstein  
 Holly and Craig Evans  
 Judy and Tom Foster  
 Andrew and Allison Fowler  
 Jeanne Gavigan  
 Julie Gillen  
 Mr. and Mrs. Fred C. Goad  
 Mr. and Mrs. Aubrey B.  
 Harwell Jr.  
 Debbie Herod  
 Diane Kruse  
 Mr. and Mrs. Randolph  
 M. Lagasse  
 Kimberly and James Lewis  
 Heather and Alan Looney  
 Gwyneth McEuen  
 Paul Cook and Michael McKee  
 Cindy and Danielle Mezera  
 Kent and Alice Ann Nagel  
 Dana and Peter Nappi  
 Nan Parrish  
 C. Wright Pinson  
 Karen and Tyler Russell  
 Madeleine and Paul Sapoch  
 Elaina Scott  
 Mr. and Mrs. William Spehr  
 Joe N. and Brenda Steakley  
 Rhonda Taylor and Kevin Forbes  
 James Weaver  
 Jerry and Ernie Williams

#### PERFORMER'S CIRCLE \$300 - \$699

Anonymous (2)  
 Linda Albertalli  
 Laura Alford and  
 Maddie Hickman  
 Lainie and Roger Allbee  
 Gay and Laurence Alvarez  
 Karen and James Ankrom  
 Dreama Arguello  
 Kris Atkins  
 C. Nelson Bailey  
 Carolyn and Kirby Baker  
 Clark and Carolyn Baker  
 Dolores A. Barnett  
 Richard Barnett  
 Christie Barrett  
 Sharon and John Barrett  
 Gary Barton and  
 Steve Manchester  
 Dana and Martin Bauguess  
 Betty Beasley and Melissa Ott  
 Piper and James Bell  
 Mrs. Annie Laurie Berry  
 Joanne Bertone  
 Diane R. Bertly  
 Justin R. Billings  
 Cherry and Richard Bird  
 Brian K. Blackburn  
 Anita and Michael Blackmer  
 Rose and Allan Bleich  
 Patricia J. Bloomfield and  
 Wayne Irvin  
 Sally Ann Blue  
 Allison and Joe Boever  
 Mr. and Mrs. Paul Boklage  
 Craig Bond  
 April and Robert Bosse  
 Jerry Boswell  
 Mr. and Mrs. C. E. Bowden  
 Keith Bowman and  
 James Lassiter  
 Patricia Bradford and  
 Dr. Michael Batty  
 Pam and Jim Brady  
 Elizabeth Brandau  
 Dr. and Mrs. Barry W. Brasfield  
 Andy Brashier  
 Jo Ann Brassfield  
 Robyn and Livingston Brien  
 David and Jenny Briggs  
 James Bristol  
 Louise and Eric Brock  
 Lorrie K. Brouse and  
 Richard Piazza  
 Erica Brown  
 Patsy and G. William Brown  
 Wesley M. Bryant  
 Cari Buckingham  
 Ann and Bill Burch  
 Dr. and Mrs. E. James Burton  
 Fay Burton



James and Annette Butler  
 Mrs. Lillian Caldwell and  
 Mr. Joe Caldwell  
 Lauren and Adam Campbell  
 Russ and Penny Campbell  
 Jeff and Kathy Cartwright  
 Agenia Clark  
 Mr. and Mrs. Roy E. Claverie Sr.  
 Kira and Jeff Cleveland  
 Mike Clutts  
 Jennifer M. Cochran  
 Kathleen Cockshaw  
 Deborah Coleman  
 Rochelle L. Coll  
 Jerry and Yvonne Collier  
 Sam and Debbie Collins  
 Jennifer Colquitt  
 Mr. and Mrs. Tom Cone  
 Anita and Jeffrey Conn  
 Joel and Rebecca Cooper  
 Virginia Hixon Corbitt  
 Mr. and Mrs. James A. Croy  
 Kevin and Mitzi Curlee  
 Kimberly L. Darlington  
 Nancy and Bob Darnall  
 Robert and Ruth Darula  
 Gina and John Davis  
 Ann and Kirby Davis  
 Joy Day  
 Jennie Dean  
 Teresa Deathridge  
 R. Allen Decuyper and Steve Sirls  
 Teri S. Devries  
 Brad Dilling  
 Kathleen V. Dixon  
 Tim and Tiffany Dodge  
 Mr. and Mrs. Robert Doochin  
 Myrtianne Downs  
 Bill and Linda Duncan  
 Ernest and Mitzi Dunkley  
 Pamela and David Duquette  
 Keith and Tracy Dyer  
 Kitty and Pat Emery  
 Annette S. Eskind  
 Jeff Eubanks  
 Jill Fainter  
 Louis Falzetti  
 Sylvia and Kenneth Faries  
 Stacy and Jeffrey Fawcett  
 Joel and Julie Fay  
 Jenni and Henry Feldhaus  
 Mr. and Mrs. John D. Ferguson  
 Holly and Andrew Feris  
 Judy Fincannon  
 Charlie and Susan Finch  
 Kellie Fitzpatrick  
 Jon and Lauren Folk  
 Virginia Fontanella

Linda and David Forrester  
 Kimberley and Ryan Foster  
 Joan and Dick Fox  
 Leslie Fram and Lanny West  
 Richard Fremont  
 Janet Frenkel  
 Michelle and Stephen Frohsin  
 Debi and Lance Fusacchia  
 Dr. Gary Gallant  
 Denise George  
 Suzanne Glover  
 Dr. Barry W. Goley and  
 Grant W. Goodman  
 Tracy and Robert Good  
 Kim and Dan Gordon  
 David B. Gray  
 Don Gray  
 David and Nicole Green  
 Kat and Jeff Greene  
 Jane Greenway  
 Sandy Gregory  
 Cathy Guenther  
 Cathy Gunn  
 G. T. Guthrie  
 Donna and John Hagan  
 Carl and Connie Haley  
 Kirsten Hamilton  
 Mr. and Mrs. Michael J. Harbers  
 Adrienne Harms  
 Barbara Hayes  
 Dr. and Mrs. Hugh L. Head III  
 Jim Hearn  
 The Helm Family  
 Arthur and Loyda Henderson  
 Mr. and Mrs. Kevin R. Hennessy  
 Bill and Catherine Henris  
 Bruce Hester and  
 Daryle Grenead  
 Winston C. Hickman Jr.  
 Hank and Mary Hildebrand  
 Patricia Hillhouse  
 Chris J. Hohl  
 Mr. Jim Holland  
 Greg and Becca Hollis  
 Jeff and Ashley Hollis  
 Deborah and Donald Holmes  
 Garland and Jeanne Honeycutt  
 Joan Z. Hornberger  
 Helen R. Houston  
 Joan Howard  
 Dr. and Mrs. Richard A. Howerton  
 Sara and David Hunt  
 Melissa and Douglas Hunter  
 Mr. and Mrs. Shandy Husmann  
 Cameron Hyder  
 Dana Moore and Jack Isenhour  
 Honorable and Mrs. Ed Jackson  
 David and Michelle James  
 Debbie and Gary Janke

Karissa Jargo  
 Fred and Kathy Johnson  
 Julia and Walt Johnson  
 Kimberly Beth Johnson  
 and Joel Northwall  
 Lisa L. Johnson  
 Alysha Jones  
 Brian and Jenni Jones  
 Dr. Nola Jones  
 Susan and Roland L. Jones  
 Candace and Arvindh  
 Kanagasundram  
 Christine Karbowski and  
 Martin Vanek  
 James and Libby Kelly  
 Jeanette and  
 Christopher Kenyon  
 Teresa Kersey  
 George and Sue Kettle  
 Cynthia J. Key  
 Michael Kice  
 Nicholas Kilen  
 Lloyd King  
 Arthur Kirkby  
 Herb Knopp  
 Janet and James Knox  
 Debra and James Kovanda  
 Kenneth Kraft and Lucilyn Crow  
 Jan and Rand Krikorian  
 Paul H. Kuhn Jr.  
 Dr. Robert and Lori Landsberg  
 Robert Lane and Emily Vandiver  
 Timothy Larson  
 Ms. Marketta Laurila  
 Christopher and Vera Lee  
 Patti and Don Liedtke  
 Andrea Lindsey  
 Cecilia Little  
 Mary and Arthur Lodge  
 Ruthie and Katie Logan  
 Rhonda and Danny Long  
 Nancy Lorenzi  
 Angela and Gene Lovell  
 Sandra Lowe  
 Rhonda and Randy Lowry  
 Amy and George Lynch  
 Don and Kathy MacLachlan  
 Nancy MacLean  
 Dr. and Mrs. Samuel MacMaster  
 Gretchen and Brian Macy  
 Andrew and Andrea Maguire  
 Jane and John Malatak  
 Marilyn Martin  
 Robert Mathews  
 Pamela McAteer  
 Juli and David McCay  
 John and Robin McClellan  
 Robert W. McDonald  
 Diane E. McIntyre

Tim and Karen McLaughlin  
 Adrienne and Richard McRae III  
 Roy D. Meadows  
 Darrell Merryman and  
     Jennifer Wright  
 Barbara and Don Meyer  
 Mitzi and Rick Michaelson Jr.  
 David and Lisa Minnigan  
 Karen Mitchell  
 Michelle M. Mittiga  
 Diana and Jeffrey Mobley  
 Tom and Vicki Moon  
 Janice B. Moore  
 Joann Morris  
 Kristi and Gregory Morrow  
 Michael and Pam Mover  
 Mr. and Mrs. John Muchukot  
 Jeff and Stephane Murphy  
 Marie Murphy  
 Mickeye M. Murphy  
 Pat and Kitty Murphy  
 Kay Awalt Musgrove  
 Mr. and Mrs. Jack Nadeau  
 Mr. and Mrs. William Newton  
 Kristin E. Nishanian  
 Agatha Nolen  
 Laura and Vincent Nord  
 Andre and Jeani Olivier  
 Corinne J. Oreilly and  
     Richard Bissonette  
 Jeff and Leslie Overby  
 Jeff and Meghan Owen  
 Julie Owens  
 David and Pamela Palmer  
 Evetta K. Palmer  
 Jerry Parker  
 J. Russell and Phyllis Parkes  
 Pat Payne  
 Nancy and Stephen Peluso  
 Mr. and Mrs. Delmer H. Peppers  
 John and Kandace Peppers  
 Elizabeth and Phil Perkins  
 Susan and Lawrence Phillips  
 Rose and Kip Pierce  
 Lyn Plantinga  
 Rodney and Holly Poling  
 Thomas and Elena Preciado  
 Lisa Pressnell  
 Larry and Michelle Price  
 Linda and Tim Priddy  
 Joyce and George Pust  
 Edria and David Ragosin  
 Ruth T. Raines  
 Patricia and Douglas Ralls  
 Elizabeth and Nancy Rankin  
 Sibyl Reagan  
 David Reiland and Diane Honda  
 Daniel Renfroe  
 Brad and Evelyn Rhoades  
 Mary Richardson  
 Joshua Riddell and  
     Elizabeth Rowland-Riddell  
 Paul and Marjorie Ridge  
 Charlotte Roberts  
 Scott and Kristy Robinson  
 Susan and Phillip Robinson  
 Worrick and Leslie Robinson  
 Evelyn and William Rodgers  
 Joyce and Mace Rothenberg  
 Patricia and Craig Rothschild  
 Cheryl Rudnicke  
 Mr. and Mrs. Rundle  
 Marianne and Chris Sabis  
 Laurie L. Sackett and  
     Mary Ellen Stevens  
 Teresa Sadler  
 Amy G. Sale  
 Susan Sanders and  
     Steve Woodard  
 Joe Sanfilippo  
 Deborah Saunders  
 John and Debbie Scannapieco  
 Jean and Stuart Schmidt  
 Barbara Schneider  
 Susan Schuchard  
 Carol and Alvin Scott  
 Sally and Paul Scott  
 Jeff and Jennifer Seebach  
 Dolores W. Seigenthaler  
 Kelly and Kevin Sekuturski  
 Charles Selke  
 Jeanne Sellars  
 Robert Sentz  
 Darendra Shannon  
 Jimmy and Simone Sheats  
 Paul D. Sheriff  
 Sharon and Bill Sheriff  
 Cindy Shields

Linda Simmons and  
     Ronald Runyeon  
 Melanie M. Simon  
 Helen Sirett and Ken Hendrix  
 Holly Smith and Johnna Wilson  
 Dr. Neil and Ruth Smith  
 Mr. and Mrs. Thomas S. Smith  
 Dr. and Mrs. Duane T. Smoot  
 Robert Sneed  
 Ashley Sonn and Jordan Miller  
 Chris and Patrick Sowada  
 Jennifer L. Spain  
 Robert and Jane Stammer  
 Judy Steele  
 Frank W. Stevens MD  
 Charles Stewart  
 Heidi and Greg Stogner  
 Joy Strange  
 Tracy and John Szente  
 Doris R. Taft  
 Dr. F. William Taylor  
 Martha and Bill Thompson  
 Julie and Brian Thure  
 Edward Tietgens  
 Carlos Tirres  
 Jeremy and Callie Tucker  
 Dustin Turner and Damian Gatta  
 Randall and Kathy Urban  
 Margaret and George Uribe  
 Eric Vai  
 Ms. Candy Varble  
 Mr. and Mrs. Bart E. Verhulst  
 Ann Waddey  
 Mary Wade  
 Janice Walker  
 Dr. and Mrs. Bill Wall III  
 Richard Walters  
 Cynthia and Quinton Wasden  
 David Watson  
 Kenneth and Julia Weiss  
 Bryon Wells  
 Chris and Beth West  
 Roberta and Steve West  
 Jeff P. White  
 Bradley and Susan Widmann  
 Dr. Brian Widmar and  
     Brad Bennett  
 Dr. and Mrs. Joseph Wieck  
 Dr. and Mrs. J. Kenneth Williams  
 Michael K. Williamson  
 Reisha Willis  
 Kevin E. Wilson  
 Dr. William R. Wilson  
 Vickie and Don Wirth  
 Emmanuelle Wojnarowski  
 Scott Woods  
 Susan R. Woods  
 Cliff and Amy Wright  
 Margaret and Ron Wright  
 Sharon Yates  
 Kelly and Steven Yokley  
 Andy and Jamie Young  
 Bill and Jane Young  
 Mr. Jeffrey Young  
 William D. Young  
 Mr. and Mrs. Julian A. Zander Jr.  
 Shirley Zeitlin  
 Sarah Zhang  
 Kerndt and Theresa Zuckowsky

#### PATRONS

**\$100 - \$299**

Anonymous (4)  
 Kathleen Airhart  
 Edgar and Kathi Allen  
 Dr. and Mrs. Douglas  
     C. Altenbern Jr.  
 Dr. and Mrs. Edwin  
     B. Anderson Jr.  
 Pat Arnold  
 Leigh and Hunter Atkins  
 Stacy Awalt  
 Grace and Carl Awh  
 Debra Barnes  
 Suzie A. Barry  
 Diane Becker  
 Rob and Melissa Beckham  
 Fred and Anne Beesley  
 Betty Bellamy  
 Mr. and Mrs. W. E. Bingham  
 Karen and Peter F. Bird Jr.  
 Gene and Natalie Boerger  
 Mary Bolte  
 Debbie Booton  
 Eric and Catherine Bottoms  
 Richard and Sara Bovender  
 Bella M. Briggs  
 Eric and Sue Broder  
 Thomas Carey

Dr. Ana M. Carmona  
 Dr. John Jeffrey Carr and  
     Ms. Pamela Crowe Carr  
 James E. Cason  
 Barbara and Eric Chazen  
 Nancy and John Cheadle  
 Renée Chevalier  
 Mr. and Mrs. Robert L. Chickey  
 Bette and Mark Christofersen  
 Nancy and Terry Clements  
 Sally and Neely Coble  
 Charles W. Cook Jr.  
 Courtney Corbin-Simon  
 Renette Corenswet  
 Phyllis Covert  
 Susan Cox  
 Dorcas Crosthwait  
 Doug and Sondra Cruickshanks  
 Mr. and Mrs. Brownlee  
     O. Currey Jr.  
 Christina Daigle  
 Patricia D'Alessandro  
 Brittany Dalton  
 Mark and Nancy Davison  
 Ken Dease and Julie Stensrud  
 Dr. and Mrs. Roy L. DeHart  
 Betty and Vern Denney  
 Drs. Richard and Carol Detmer  
 Diana and Michael Diaz  
 Lee Lee and Wally Dietz  
 Jessica Ditto  
 Kathy Doman  
 Christi Dortch  
 Gary and Paulette Dowdy  
 Donna Dudek  
 Catherine M. Duffy  
 Bob and Nancy Dunkerley  
 Anne and Darryl L. Edmonds  
 Mr. and Mrs. Thomas S.  
     Edmondson Jr.  
 Georgette and Shervin Eftekhari  
 Teresa Ellithorpe  
 Zita and Dan Elrod  
 Nancy and Hugh Entreklin  
 Mr. and Mrs. Jere M. Ervin  
 Olivia and Bruce Evans  
 Marcia Everett  
 Harry W. Exell and  
     Dr. Mary R. McBean  
 Cherrie Farnette  
 Mr. and Mrs. Jack Fleischer  
 Jessie and Carolyn Foster  
 Charlotte Fransen  
 Sandra Freeze  
 Ms. Mary Galbraith  
 Mr. and Mrs. Albert Ganier III  
 Elizabeth Pierce and James Gay  
 Brenda Geise  
 Dottie and Carl George  
 Diane and Gary Gober  
 Megan L. Goosetree  
 Barbara and Milton Grossman  
 Mr. and Mrs. Dannie Harrison  
 Mark Hartzog  
 Barbara Hayes  
 Dixie Heagy  
 Buzz Heidtke  
 Mr. and Mrs. Eugene Heller  
 Dr. and Mrs. Reggie Henderson  
 The Honorable and  
     Mrs. Douglas Henry Jr.  
 Karen and Mark Hodges  
 Jay and Meredith Hollomon  
 Chris and Susan Holmes  
 Mr. and Mrs. Henry W. Hooker  
 Martha Hooper  
 Donna and Michael Horton  
 Nancy and Jon Houge  
 Sue and James R. Hurt  
 Melissa and Bentz Huschke  
 Danette and Matthew Idlett  
 Melissa R. Irvin  
 Frances C. Jackson  
 Richard and Archilene Jackson  
 Mr. and Mrs. Steve Jackson  
 Dr. and Mrs. C. H. Jameson III  
 Mike Jaramillo  
 Edie and David Johnson  
 Lisa K. Johnson  
 Will and Irish Johnston  
 Don and Leigh Jones  
 Ed Kaiser  
 Jackie Karr  
 William B. King  
 Sandra Koczwarra  
 Ellen and Buddy Koonce  
 Linda and Richard Kotler  
 Howard and Elizabeth Lamar

Sharon H. Lassiter  
 William H. Lassiter Jr.  
 Christy Lawson  
 Sharon and Keith Lesain-Edwards  
 Mr. and Mrs. Irving Levy  
 Adam Lewis  
 Rashonda Lewis  
 Richard and Tad Lisella  
 Cecilia Little  
 Christine Lombardi Household  
 Keeli Lonas  
 Steve and Marilyn Lorenz  
 Charisse Luckey  
 Shirley Malchow and  
     Molly McGill  
 Jennifer Mallory  
 Richard and Ruth Manson  
 Mr. and Mrs. Tony Marks  
 Mr. and Mrs. Henry Martin  
 Drs. Paul and  
     Pat Matthews-Juarez  
 Richard May  
 Mr. and Mrs. James L. McGregor  
 Anne Elizabeth McIntosh  
 Mr. and Mrs. Robert E.  
     McNeilly Jr.  
 Anne Moore  
 Mary Sue and Chris Moore  
 Elizabeth and Michael Morard  
 Dale and Deborah Mosley  
 Jimmy Naifeh  
 Scotty Neal  
 Sherri and Marvin Neal  
 Richard Neubauer  
 Dr. Clint Newman  
 Penny Nichting  
 Iris A. Nolan  
 Corinne O' Connor  
 Mr. and Mrs. William C.  
     O'Neill Jr.  
 Courtney Owen  
 Chisry Ozier  
 Dr. and Mrs. Philip M. Pfeffer  
 Charley and Alexia Poe  
 Mr. and Mrs. Marshall T. Polk III  
 Jennifer and Gus Puryear  
 Mr. and Mrs. Hugh Queener  
 Michael Radyko  
 Jeanie Page Randall  
 Christie L. Reeves  
 Ann V. Roberts  
 Mr. and Mrs. Kenneth L. Roberts  
 Mary Ellen and Tom Rodgers  
 Mary and David Rollins  
 Judith R. Roney  
 Donna and Steven Rosenfarb  
 Victoria O. Ross  
 Mr. and Mrs. J. R. Rudd  
 Jim and Lee Ann Ruderer  
 Patty and Tom Sabella  
 David Sampsel  
 Ashley Sanders  
 Ralph and Leeanne Schulz  
 Missy and Ed Scott  
 Mr. and Mrs. James  
     C. Seabury III  
 Charles and Bettye Seivers  
 Scott Sideman  
 Alice Sisk  
 J. Smith  
 Suzanne and Grant Smothers  
 Lisa Sokal  
 Sandra Sotero  
 Lelan and Dr. Yolanda Statom  
 Nancy Sugg  
 Lisa G. Thomas  
 Kimberly D. Thompson  
 Mr. and Mrs. James F. Turner Jr.  
 Robert J. Turner  
 Frances Anne Varallo  
 Betty J. Vernon  
 Joyce A. Vohn  
 Jane M. Wakefield  
 Jane Walker  
 Lori Ward  
 Mike Wathen  
 Johnna Watson  
 Angie and Tony Weeks  
 Colleen Conway-Welch  
 Dr. J.J. Wendel  
 Charles and Fran White  
 Irene and Ridley Wills  
 Yvonne C. Wood  
 Dahna Wright  
 Dr. and Mrs. Carl W. Zimmerman



# Celebrating the best Nashville has to offer in Arts & Entertainment



BUY NOW at  
**NAEmag.com**  
and at area Newsstands



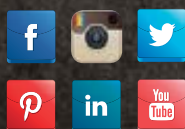
A Glover Group Entertainment Production

# T.J. MARTELL FOUNDATION CELEBRATING OUR 40TH ANNIVERSARY

*...continuing our  
mission of funding  
life-saving research  
at the Frances  
Williams Preston  
Laboratories at the  
Vanderbilt-Ingram  
Cancer Center.*



15 Music Square W  
Suite C  
Nashville, TN 37203  
615-256-2002  
tjmartell.org



## GOOD MONSTERS

by Nate Eppler

**FEBRUARY 11-27, 2016**



NASHVILLE  
REPERTORY  
THEATRE

nashvillerep.org

## CHICAGO

music by John Kander, lyrics by Fred Ebb,  
book by Fred Ebb & Bob Fosse

**MARCH 17 - APRIL 16, 2016**



**Concerns or compliments?**  
[PatronServices@TPAC.org](mailto:PatronServices@TPAC.org)

### Accessibility Services at TPAC

include parking, elevators, wheelchair seating, use of a TPAC wheelchair, designated restrooms, and services for hearing and visually impaired patrons. Infrared assisted listening devices are available at no charge at the entrance to each theater. TPAC offers signing for hearing impaired patrons, and audio description and Braille programs for blind and visually impaired patrons on the Sunday matinee in the season ticket series of HCA/TriStar Health Broadway at TPAC. Large print programs are available for Broadway and TPAC Presents shows. Special accessibility requests and concerns, excluding assisted listening headsets, should be discussed in advance with the TPAC House Manager at 615-782-4087. Reservations for a wheelchair should be made on the day of performance.

**Restrooms** for Jackson Hall are located one level down from the 6th Avenue entrance, in the halls behind the seats in the tier and balcony, and downstairs in the back of the orchestra level. Restrooms for Polk Theater are located down the stairs to the left of the entrance to the orchestra level and on the balcony level.

**Bars** are located in the lobbies and in the back of the orchestra level of Jackson Hall.

**An ATM** is on the G-Level, near the main security desk at the Deaderick Street entrance to the building.

**All electronic devices** including cell phones, pagers, watch alarms, cameras, and recorders should be turned off prior to the performance or checked-in with the floor manager or an usher, who will note the seating location of physicians and others who expect emergency calls.

**Call Lost and Found** at 615-782-4098 to report an item you might have left at TPAC.

**In case of an emergency,** the number to leave with others is 615-782-4000 (plus performance, theater, and seat location).

**Smoking**, including use of all tobacco products and electronic cigarettes, is permitted outside the building.





Innovation  
that excites

# THE NEW NISSAN TITAN<sup>®</sup> XD.

## HAULS MORE CLASS THAN IT SHOULD.

We dropped a Cummins<sup>®</sup> 5.0L V8 Turbo Diesel<sup>1</sup> into the 2016 TITAN XD. Boosted by a Holset<sup>™</sup> M2 two-stage turbocharger, this beast makes over 310 hp and 555 lb-ft of torque, giving you smooth, efficient towing for more than six tons.<sup>2</sup> That's heavy-duty attitude in a full-size pickup – the first in a lineup of all-new trucks from Nissan.<sup>3</sup>



**AMERICAN TITAN**

DESIGNED IN CALIFORNIA ENGINEERED IN MICHIGAN  
TESTED IN ARIZONA ASSEMBLED IN MISSISSIPPI  
POWERED BY INDIANA AND TENNESSEE



<sup>1</sup>Available engine. <sup>2</sup>Estimated towing capacity on select trims based on Nissan internal testing. <sup>3</sup>The 2016 Nissan TITAN is not yet available for purchase. Expected availability in December 2015. Pre-production model shown; see actual production vehicle when available for final details on features. See *Nissan Towing Guide* and Owner's Manual for proper use. Cargo and load capacity limited by weight and distribution. Always secure all cargo. Heavy loading of the vehicle with cargo, especially on the roof, will affect the handling and stability of the vehicle. Always wear your seat belt, and please don't drink and drive. ©2015 Nissan North America, Inc.

# TACORI



## *Genesis Diamonds*



*The Official Jeweler of the Tennessee Titans*



Green Hills, TN  
(615) 269-6996

Cool Springs, TN  
(615) 371-6765

St. Matthews, KY  
(502) 891-0424

Cincinnati, OH  
(513) 657-3000

[www.GenesisDiamonds.net](http://www.GenesisDiamonds.net)