

slptoolkit

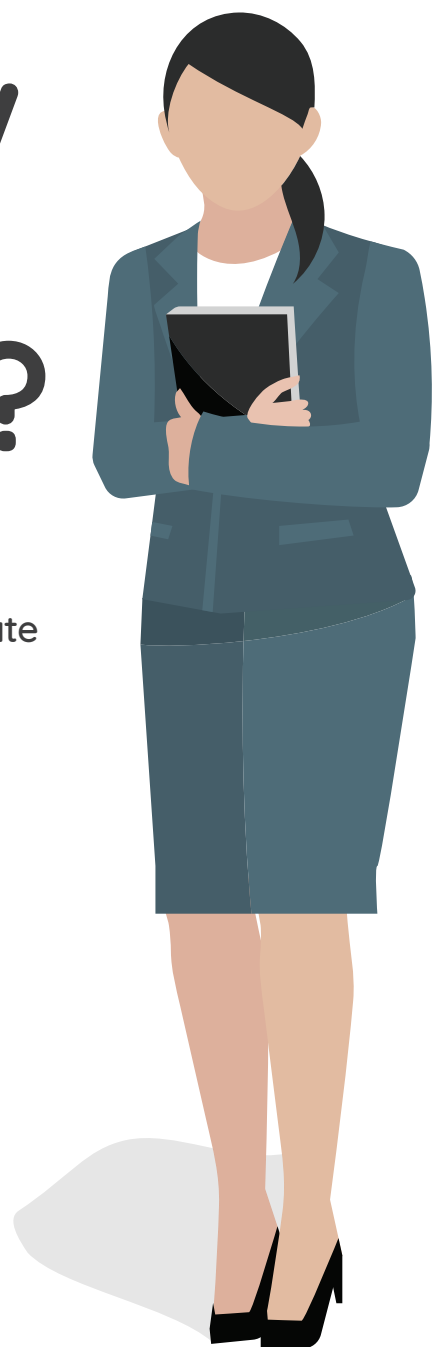


Eliminate the
guesswork.

Will your IEPs meet the new standards from Endrew?

Across the country, school-based speech language pathologists (SLPs) have a systematic way to evaluate students for special education eligibility. However, there is no such process for developing Individualized Education Plans (IEPs).

SLP Toolkit is the only software platform with built-in assessments and progress monitoring tools to support IEP development and monitoring. Your SLPs will have the data they need to be confident in their recommendations throughout the school year.



What is SLP Toolkit?

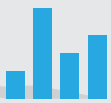
SLP Toolkit is a web-based service designed by school based SLPs for school based SLPs. The built in features and content help an SLP efficiently and effectively manage students throughout the duration of their IEPs. Since SLP Toolkit can be used on any web-enabled device, the data is available any time and minimizes the amount of paper used in the process. SLP Toolkit has tools to support:



- ✓ identification of communication strengths and needs with built in Present Level Assessments
- ✓ daily data collection to drive decisions in therapy
- ✓ SMART goal development to ensure individualized objectives that are measurable, challenging and aligned to the student's identified needs
- ✓ efficient and consistent progress monitoring with built in criterion referenced tests and rubrics
- ✓ individualization of accommodations for a variety of learning needs
- ✓ scheduling large speech therapy caseloads
- ✓ visual review of progress through built in graphs and reports
- ✓ all information can be easily shared with parents/teachers

Why SLP Toolkit?

SLP Toolkit is currently being implemented by over 7,000 SLPs across the country, including large group implementation in districts like Denver Public Schools (Colorado) and Northside Independent School District (Texas). You may have even already been approached by an SLP in your district. Why is that?



Removes Guesswork

Teams can make evidenced based decisions efficiently and confidently.



Endrew Compliance

Your SLP staff will have a systematic and comprehensive way to collect data and write Endrew compliant IEPs that will pass a complaint or due process.



Consistency

Your SLP staff will be collecting data in a consistent way based on best practices in the field.



Paperless

Users simply log in and everything needed for every student is at their fingertips. Our secure servers keep your data protected.



User Friendly

SLP Toolkit was designed to be set up quickly and easy to use.



Leveled Content

Materials are leveled for students from preschool through high school.

SLP Toolkit supports SLPs, both veteran and new, with productivity to increase time spent working with students on their individualized communication needs.

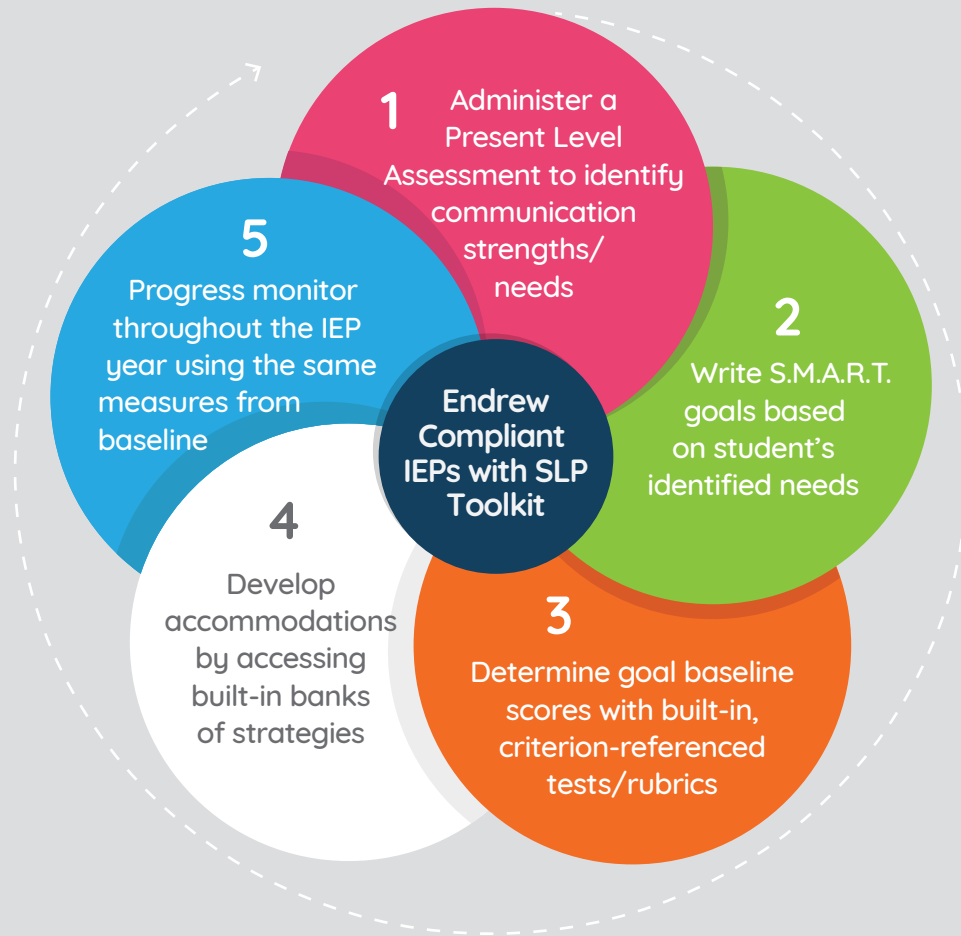
How SLP Toolkit works.



Data is saved to the individual student.



Your SLP will assign tests, goals, and strategies to each student in order to develop and progress monitor IEPs.



In addition, SLPs can track progress from session to session using the daily data feature. Print graphs and reports, making it easy to share with parents and teachers as well as complete Medicaid billing faster than ever!



Subscription pricing.

One year of SLP Toolkit costs less than one hour of an attorney's services!



Depending on your school/district, the following funding sources can be considered when purchasing SLP Toolkit subscriptions:

- Medicaid
- IDEA 6B
- M&O
- Title I
- Title II
- Individual school funds
- Parent booster programs (PTA/PTO)
- ECA tax credit funds (Arizona only)

We accept purchase orders! Contact us at billing@slptoolkit.com for our purchase order guidelines and to get a copy of our W9 to be set up as a vendor in your district.

“SLP Toolkit provides the exact data we need to ensure our IEPs are compliant based on the new standards set by the Endrew decision. The data gathered is always individualized to the student and makes tracking and reporting progress easy! The graphs help show families how our instruction is supporting their child's growth and reaching their potential. I feel confident in the data we present at IEP meetings will stand the test of the Endrew standards.”

- Special education director, Arizona

Need more information?

We would love to hear from you! Email us at: hello@slptoolkit.com. Send us your questions, schedule a phone call, or set up a 15-min demo of the product. Let us show you how we can help you stay compliant with Endrew!

slptoolkit.com