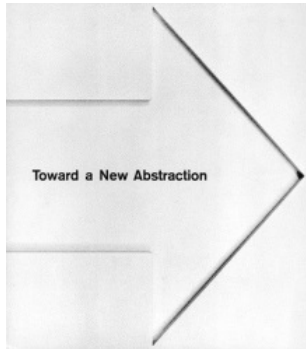


***Masterpieces & Curiosities: Elaine Lustig Cohen***

**The Jewish Museum**

**August 17, 2018 – August 11, 2019**

**Checklist**



Elaine Lustig Cohen  
*Toward a New Abstraction*, 1963  
Catalogue  
9.5 x 8.25 inches (unframed)  
The Jewish Museum, NY

---



Elaine Lustig Cohen  
*Recent American Sculpture*, 1964  
Catalogue  
9.5 x 8.25 inches (unframed)  
The Jewish Museum, NY

---



Elaine Lustig Cohen  
*Kenneth Noland*, 1965  
Catalogue  
9.5 x 8.25 inches (unframed)  
The Jewish Museum, NY

---



Elaine Lustig Cohen  
*Primary Structures*, 1966  
Catalogue  
9.5 x 8.25 inches (unframed)  
The Jewish Museum, NY

---



Elaine Lustig Cohen  
*Ad Reinhardt*, 1966  
Catalogue  
9.5 x 8.25 inches (unframed)  
The Jewish Museum, NY

---



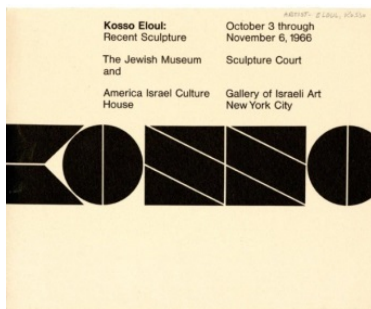
Elaine Lustig Cohen  
*Masada*, 1967  
Catalogue  
9.5 x 8.25 inches (unframed)  
The Jewish Museum, NY

---



Elaine Lustig (back)  
*Giora Novak, 1964*  
Catalogue  
9.5 x 8.25 inches (unframed)  
The Jewish Museum, NY

---



Elaine Lustig Cohen as consultant for Davis-Aviles  
*Kosso Eloul: Recent Sculpture, 1966*  
Fold-out catalogue  
7 x 8.5 inches (unframed)  
The Jewish Museum, NY

---



Elaine Lustig Cohen  
*Recent American Synagogue Architecture, 1963*  
Brochure  
10 (5) x 7 inches (unframed)  
The Jewish Museum, NY

---



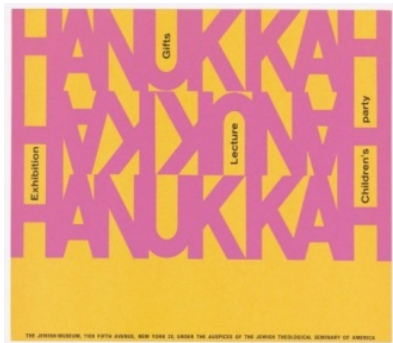
Elaine Lustig Cohen  
*The Hebrew Bible in Christian, Jewish and Muslim Art*,  
1963  
Poster  
48.3 x 29.9 cm (19 in. x 11 3/4 in.)  
Gift of Tamar Cohen and Dave Slatoff  
Cooper Hewitt, Smithsonian Design Museum,  
Smithsonian  
Institution

---



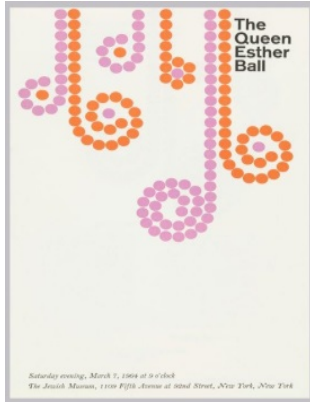
Elaine Lustig Cohen  
Shopping Bag, 1963  
Bag  
H x W: 28.6 x 19.1 cm (11 1/4 x 7 1/2 in.)  
Courtesy of the Herb Lubalin Study Center at the  
Cooper Union

---



Elaine Lustig Cohen  
Hanukkah Party, 1964  
Invitation  
H x W: 17.6 x 25.4 cm (6 15/16 in. x 10 in.)  
Courtesy of the Herb Lubalin Study Center at the  
Cooper Union

---



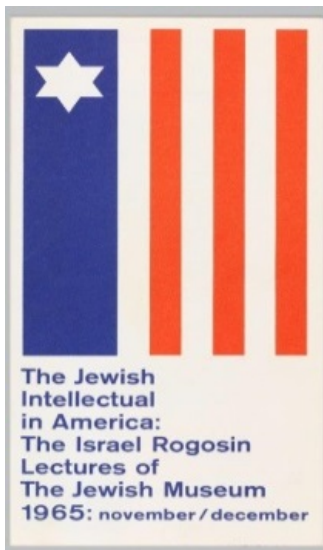
Elaine Lustig Cohen  
The Queen Esther Ball, 1964  
Invitation  
H x W: 24 x 15.6 cm (9 7/16 x 6 1/8 in.)  
Gift of Tamar Cohen and Dave Slatoff  
Cooper Hewitt, Smithsonian Design Museum,  
Smithsonian  
Institution

---



Elaine Lustig Cohen  
An Invitation to Membership, 1965  
Booklet  
H x W: 17.8 x 22.7 cm (7 in. x 8 15/16 in.)  
Courtesy of the Herb Lubalin Study Center at the  
Cooper Union

---

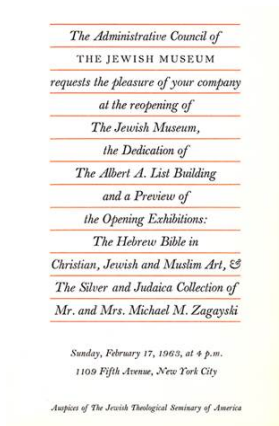


Elaine Lustig Cohen  
The Jewish Intellectual in America: The Israel Rogosin  
Lectures of The Jewish Museum 1965: November /  
December, 1965  
Brochure  
H x W: 20.8 x 9.7 cm (8 3/16 x 3 13/16 in.)  
Gift of Tamar Cohen and Dave Slatoff  
Cooper Hewitt, Smithsonian Design Museum,  
Smithsonian  
Institution

---



Elaine Lustig Cohen  
Circulating Exhibitions, 1966  
Booklet  
H x W: 22.9 x 9.8 cm (9 in. x 3 7/8 in.)  
Courtesy of the Herb Lubalin Study Center at the  
Cooper Union



Elaine Lustig Cohen  
Invitation card to the reopening of the Jewish  
Museum, 1963  
Invitation

Private Collection



Elaine Lustig Cohen  
Membership brochure,  
1964  
Brochure

Private Collection



Elaine Lustig Cohen  
Elaine and Arthur Cohen New Year's Party invitation,  
1968  
Invitation  
Private Collection

---



Elaine Lustig Cohen  
Elaine Lustig Letterhead  
c. 1960  
Letterhead  
Private Collection

---



Elaine Lustig Cohen  
*Untitled*, 1970  
Colored pencil on paper  
8x8 in  
Estate of Elaine Lustig Cohen

---



Elaine Lustig Cohen  
*Untitled, 1962*  
Colored pencil on graph paper  
12x12 in  
Estate of Elaine Lustig Cohen

---



Elaine Lustig Cohen  
*Untitled, 1966*  
Colored pencil on paper  
14 x 12.75 in  
Estate of Elaine Lustig Cohen

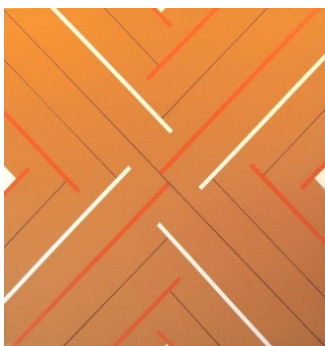
---



Elaine Lustig Cohen  
*Untitled, 1966*  
Acrylic on canvas  
36x36  
Estate of Elaine Lustig Cohen

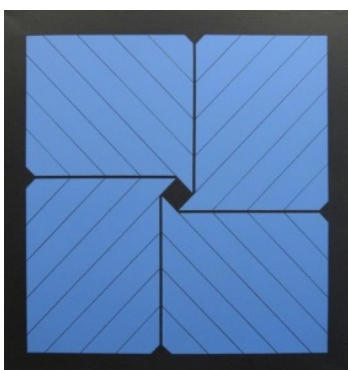
---





Elaine Lustig Cohen  
*Kasbah II*, 1967  
Acrylic on canvas  
40 x 40"  
Estate of Elaine Lustig Cohen

---



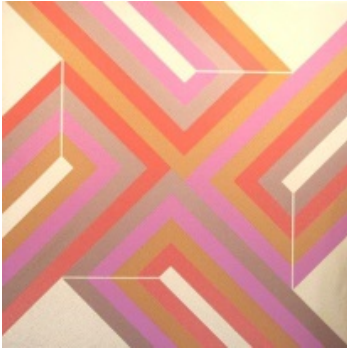
Elaine Lustig Cohen  
*Untitled*, 1967  
Acrylic on canvas  
32x32  
Estate of Elaine Lustig Cohen

---



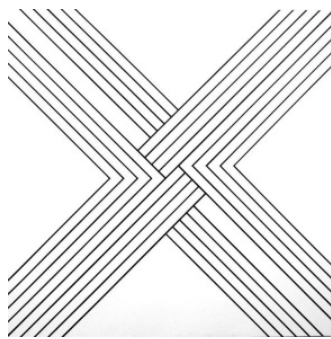
Elaine Lustig Cohen  
*Untitled*, 1967  
Acrylic on canvas  
36x36  
Estate of Elaine Lustig Cohen

---



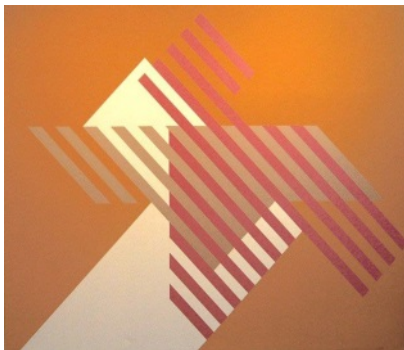
Elaine Lustig Cohen  
*Untitled*, 1968  
Acrylic on canvas  
72x72  
Estate of Elaine Lustig Cohen

---



Elaine Lustig Cohen  
*Untitled*, 1969  
Acrylic on canvas  
60x60  
Estate of Elaine Lustig Cohen

---



Elaine Lustig Cohen  
*Gath*, 1975  
Acrylic on canvas  
65x84  
Estate of Elaine Lustig Cohen

---



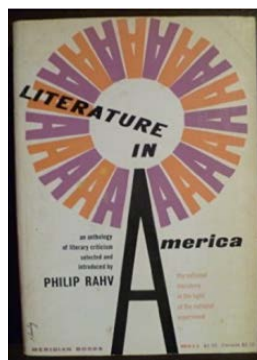
Sergio Pacifici (author); Elaine Lustig Cohen (cover design)  
*Guide to Contemporary Italian Literature*, 1961  
Book  
7 x 4 1/4 x 3/4 in

---



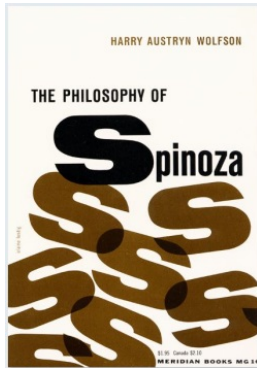
Leonard Feather (author); Elaine Lustig Cohen (cover design)  
*Book of Jazz*, 1958  
Book  
7 x 4 1/4 x 3/4 in

---



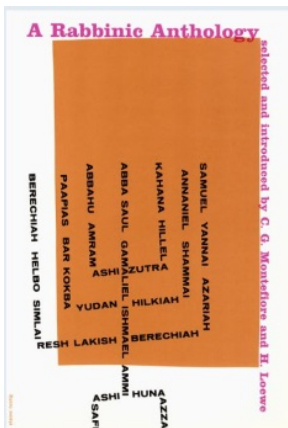
Philip Rahv (author); Elaine Lustig Cohen (cover design)  
*Literature in America*, 1957  
Book  
8 x 5.5 x 1.25 in

---



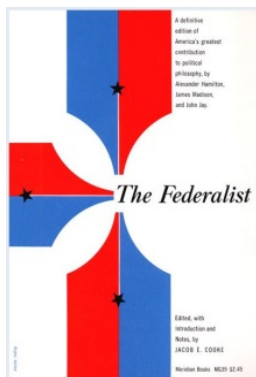
Harry Austryn Wolfson (author); Elaine Lustig Cohen  
(cover design)  
*The Philosophy of Spinoza*, 1958  
Book  
8 x 5 1/4 x 1 1/2 in

---



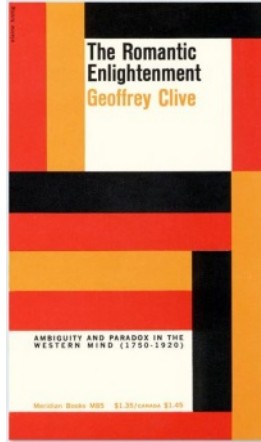
C.G. Montefiore and H. Loewe (authors); Elaine Lustig  
Cohen (cover design)  
*A Rabbinic Anthology*, 1959  
Book  
8 1/2 x 5 3/4 x 2 in

---



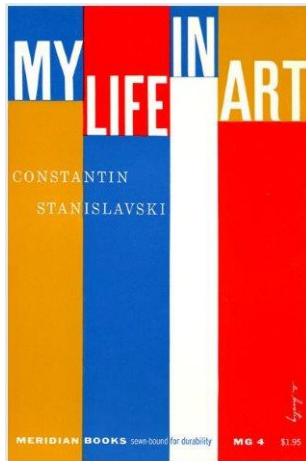
Jacob E. Cook (author); Elaine Lustig Cohen (cover  
design)  
*The Federalist*, 1961  
Book  
8 x 5 1/4 x 1 1/2 in

---



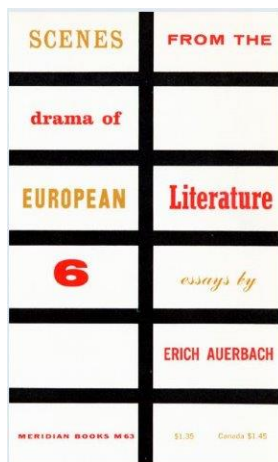
Geoffrey Clive (author); Elaine Lustig Cohen (cover design)  
*The Romantic Enlightenment*, 1959  
Book  
7.12 x 4.5 x 0.5 in

---



Constantin Stanislavski (author); Elaine Lustig Cohen (cover design)  
*My Life in Art*, 1956  
Book  
7 7/8 x 5 5/16 x 1 1/4 in

---



Erich Auerbach (author); Elaine Lustig Cohen (cover design)  
*Scenes from the Drama of European Literature*, 1959  
Book  
7.1 x 4.2 x 0.5 in

---

