

## **RS&A Online Training**

### **Common Sense Digital Imaging for Latent Print Examiners**

*Instructor: Matt Marvin, CLPE, CFWE  
16 Hours | \$300.00 | 30 Day Access*

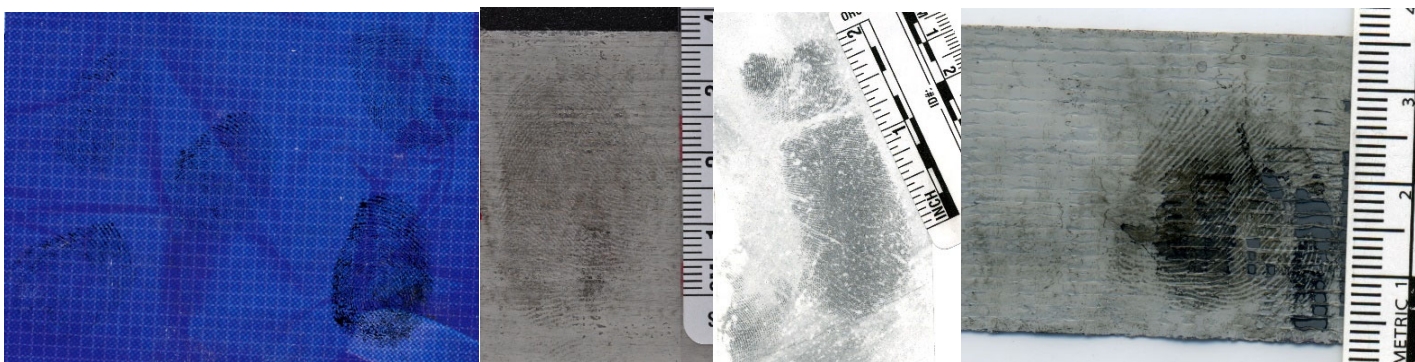


**TO REGISTER VISIT US ONLINE AT: [WWW.RONSMITHANDASSOCIATES.COM](http://WWW.RONSMITHANDASSOCIATES.COM)**

#### **COURSE DESCRIPTION**

### **ATTENTION: LATENT PRINT EXAMINERS!**

Do you know what tools to use in Photoshop to make these images better for comparison purposes?



**Are you using Photoshop to enhance digital evidence in your casework?**

**Are you using Photoshop's many tools and techniques to the best of their ability?**

**Are you confident in your ability to use Photoshop as a Latent Print Examiner?**

In this online course, your instructor Matt Marvin, CLPE, CFWE will share his many years of experience and expertise applying digital imaging to latent print evidence using Photoshop.

This course is designed for latent print examiners of all levels. If you have little to no knowledge of Photoshop...this course is for you. If you have been using Photoshop for years...then this course is for you. Anyone who uses Photoshop to make side-by-side comparisons can and will benefit from completing this online course.

#### **THIS ONLINE COURSE ISN'T JUST FOR LATENT PRINT EXAMINERS!**

This course teaches a tool and then builds on that tool as you progress through the course. You get world class instruction which teaches you professional techniques and shortcuts. Mastering these tools and techniques can save hours of time and frustration when using Photoshop and working with digital impression evidence.

If you work in Photoshop you can benefit from the instruction and exercises contained in this online course.

## THE PURPOSE

The purpose of this online course is to substantially improve the ability of a latent print examiner to conduct digital comparisons using Photoshop. The tools and techniques taught in this course can be immediately applied to daily casework.

## THE NEED

Most latent print examiners never get any formal training in the area of digital imaging. This online course is designed to help examiners be more efficient in their on-screen comparisons by using some of today's most advanced digital imaging techniques. This is done through instruction, practical exercises, and a final exam.

## TARGET AUDIENCE

This course is designed for Latent Print Examiners and other impression evidence examiners, but can benefit many others outside the role of LP Examiner. From the beginner who is new to Photoshop or experienced examiners who are looking to hone their Photoshop skills.

## YOUR INSTRUCTOR

Matt Marvin, CLPE, CFWE

Phone: 1-866-832-6772

Email: [mmarvin@ronsmithandassociates.com](mailto:mmarvin@ronsmithandassociates.com)



Matthew Marvin has been employed in the forensic identification field for over 18 years, and has worked cases from over forty states and six countries. He was employed with the Colorado Bureau of Investigation Forensic Science Laboratory for ten years, where he was the technical leader for latent prints, footwear and tire tracks. He is presently employed as the latent print technical manager with Ron Smith and Associates, Inc.'s headquarters laboratory. Mr. Marvin holds a Bachelor of Science degree in biology with graduate work in biochemistry. He has been published four times in peer-reviewed journals. Mr. Marvin has lectured on numerous occasions regarding both latent print and footwear examinations. He is the director and a standing instructor at The International Latent Print Examiner Academy. As a board-certified latent print examiner by the International Association for Identification (I.A.I.), he currently serves on the Science and Practice Subcommittee on Latent Print Development and on the Latent Print Certification Board. Mr. Marvin is also a board-certified footwear examiner by the I.A.I. and serves on the OSAC Footwear and Tire Subcommittee as well as the ASB Footwear and Tire Consensus Body. He has been qualified numerous times as an expert witness in court.

## APPROVED BY THE INTERNATIONAL ASSOCIATION FOR IDENTIFICATION

This RS&A online course has been approved by The International Association for Identification for 16 Hours of continuing education credits for Latent Print Examiner Certification and Re-Certification.

**International Association  
for Identification**

## COURSE OUTLINE

- **Module 1 – Preferences and Workspace**
  - Preferences
  - Workspace Arrangement
  - History Tracker and increase history states
    - *History Tracker Exercise 1*
- **Module 2 - Image Orientation**
  - Image Duplication
    - *Image Duplication Exercise 1*
  - Image Rotation / Resolution
    - *Rotation Exercise 1-3*
  - Canvas Flip
    - *Rotation Exercise 1*
- **Module 3 - Drawing Lines and Arrows, Dropping Dots, and Text**
  - *Drawing Lines and Arrows, Dropping Dots, and Text Exercise 1*
- **Module 4 – Inversion and Selections**
  - Inversion
    - *Inversion Exercise 1*
  - Selections
- **Module 5 – Basic Enhancements**
  - Levels
    - Levels Exercise 1-4
  - Shadows and Highlights
    - Shadows and Highlights Exercise 1-3
- **Module 6 – Area Specific Enhancements**
  - Dodge
    - Dodge Exercise 1-3
  - Burn
    - Burn Exercise 1-3
    - Dodge & Burn Exercise
- **Module 7 – Color Based Enhancements**
  - Color Modes
    - Color Modes Exercise
  - Color Channels
    - Color Channels Exercises 1-3
  - Black and White Adjustments
    - Black & White Exercises 1-3
  - Selective Color
    - Selective Color Exercises 1-3
  - Color Subtraction
    - Color Range Exercise 1-3
- **Module 8 – Fine Details**
  - Sharpening Techniques
    - Sharpening Exercises 1-3
  - Noise Removal
    - Noise Removal Exercises 1-3
- **Module 9 – Calculations**
  - Calculations Exercise 1-3
- **Module 10 – Image Calibration and Rulers**
  - Calibration Exercises 1-3
- **Module 11 – Perspective Correction**
  - Perspective Correction Exercises 1-3
- **Module 12 – Scanners**
- **Final Combined Practical Exercises**
- **Written Exam**
- **Certificate of Completion**

## REGISTER ONLINE

Visit <http://www.RonSmithandAssociates.com> to register for this online course. This online course is on-demand. No waiting...simply register, pay your tuition, and start learning!