



## Setting up your stone setting workshop

The following list of tools are recommended to help you advance through the Platinum Level Stone Setting course.

You probably have some or most of the tools, but we jewelers all have a tool wish list. Hopefully this will help you plan & prioritize.

The list does not include an air assist engraving machine (gravermach) or a microscope. It's up to you if you want to commit and invest to that extent.

It's hard for me to know when to stop adding recommendations, and no doubt you will see me use a different tool in my tutorials that has not been included. However you will also find that I demonstrate alternative ways to achieve the same result sometimes using very basic methods and tools. My aim is to make stone setting convenient inexpensive and inclusive as possible, and hopefully help you to turn your hobby into a career.

There is of course one more important addition to the list. A strategically positioned media player to view the JTS tutorials. Happy training.

Yours Sincerely Peter Keep

### PRACTICE SETTING BLANKS



Jewellery Training Solutions can supply you with setting blanks of all shapes and sizes. The alloy is ideal for all types of stone setting.

Go to the store on the Platinum Level page.

Alternatively you can make your own.

### STONE GAUGE



My personal preference is the Leverage gauge or gemstone gauge. You have a choice of digital or dial. It can quickly measure gems, inside settings, set stones, inside ring shanks, the list of uses goes on.

### OPTIVISOR OR SIMILAR



You will be needing a magnifier as you advance through the stages if like me you do not use a microscope. I suggest that you start with a 3x lens and work up towards a 7 or 10x lens when you get to micro pave or as you need to.

### MEASURING TOOLS



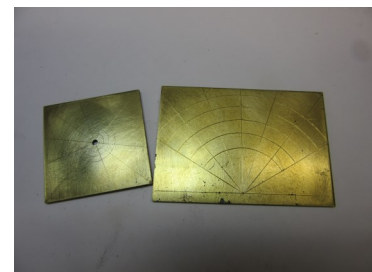
A six inch steel rule, mini set square and protractor will often feature during the course.

### LOUPE & TWEEZERS



A 10 x jewellers loupe should be on hand and a good pair of stone tweezers.

### TEMPLATES



I will be showing you how to make your own templates for marking out stone placement as well as other uses, so hold off purchasing any for now.

## RECOMMENDED SETTING TOOLS FOR JTS PLATINUM LEVEL TRAINING

### PRECISION DIVIDERS



If your current dividers are large and clumpy, consider upgrading to a precision pair, it's well worth the money

### MICRO MOTOR OR PENDANT DRILL



Ever since I bought a micro motor I've not used my pendant drill. It was a game changer for me especially for setting. They're not that expensive now. Just be aware that the motor is in the hand piece so allow it to cool down if you are over working it.

### BURS & DRILLS



The following list of burs are what I most commonly use. The sizes relate to Busch product range. You can vary the size, add the between sizes or skip some to reduce the cost. I have listed them in order of importance.

- Twist Drills 0.7mm 1mm 1.2mm 1.4mm 1.8mm
- Round burs 0.5mm 0.7mm 0.9mm 1.2mm 1.5mm 2mm 2.5mm 3mm
- Hart burs (90 degree) 0.8mm 1mm 1.2mm 1.4mm 1.7mm 2mm 2.3mm 2.7mm 3.1mm 4mm
- Tapered burs 0.7mm 1mm 1.4mm
- Bud burs 2.1mm
- Cone burs 3.1mm
- Cup burs 1.8mm 2.1mm

### BENCH MATE



The bench mate products are a setter's most important third hand. It will make your setting tasks so much easier. You can start with the basic kit and add to it as you can afford to.

[www.grstools.com](http://www.grstools.com)

### HAMMER TOOL



I highly recommend the Dremel electric engraver. I found that Ebay is the best place to find one. You can modify the tip and I show how to make specialized tips for channel setting or bezel setting. The hammer attachment for a pendant drill can also be used.

### MARKING SCRIBE



You will no doubt have a scribe, but I find a scalpel essential for straight marking and spacing stones.

### SHARPENING STONE



Eze-lap diamond hone & stone sharpeners are my weapon of choice, they are great for quick sharpen ups of drills and gravers. But if you are used to natural sharpening stones it's fine to stay with it.

### SPECIALIZED PLIERS



Along with your usual bench pliers make sure you have a pair of soft jaw pliers and a spare pair of round nose pliers to modify into burnishing pliers. There are instructions included in the course.

You can purchase setting pliers but don't make this top priority.

## RECOMMENDED SETTING TOOLS FOR JTS PLATINUM LEVEL TRAINING

### GRAVERS



For gravers I would recommend the following shapes to get you started.  
Flat edge 1.2mm  
Round edge 1mm  
Onglette edge 1.8mm  
Square 2.5mm  
Lozenge 2.5mm  
A size variance won't matter too much if stock is limited. Don't forget handles. If you look on line you can purchase a complete set of gravers and they seem to be good value. They covers most shapes but not all, however some gravers can be modified to cover missing ones. Its also good steel (HSS)

### RING CLAMP & PIN VISE



The ring clamp that can grip the inside of a ring is useful as well as a pin vise to hold small tools

### FINISHING BURS



For polishing preparation I recommend;  
Emery mandrel (Parallel sides)  
Snap on mandrel and Moores disks (medium grade if you are not buying all grades)  
Silicone carbide rubber polishers;  
Brownie (mounted square edge mounted knife edge and mounted bullet)  
Greenie (mounted knife edge)

### PUSHERS



There are demonstrations on how to make your own pushers, just make sure you have spare handles and 3mm round brass wire. You will also need square or round steel rod.

### BURNISHERS



I use my straight oval burnisher for hardening and applying a shape to the shared claws. You can make your own burnisher for gypsy setting using a beader with a polished tip.

### POLISHING BURS



For polishing around settings I recommend a Mounted pencil brush (Black bristle)  
Mounted goats hair brush  
Mounted cotton mop. I use Hyfin polishing compound and rouge

### BEADING SET



Beading sets come in full or half sets. I recommend getting a full set. You can also purchase a beader sharpening block, but I don't personally use one.

### MILL GRAIN WHEELS



I recommend a #10 #14 & #18 or as close to those sizes. You can use the pin vise to grip the tool shaft

### GRAVER CARE



The Edenta products are hard to find so you may have to settle for a similar product. The diamond disc makes graver sharpening really efficient. The CeraGloss disc creates the best bright cut polish to your gravers