

Rigid Coupling Fig. 6400



The Figure 6400 Rigid Coupling is specially designed to provide a rigid pipe connection to meet the specific demands of copper tubing installation size 2"–8". Fast and easy swing-over installation of the rugged lightweight housing produces a secure rigid pipe joint. Available with Grade "EP" Copper EPDM flush gap style gasket. Gasket has service temperature range of –40°F to +250°F.

Material Specifications

Housing

Ductile iron conforming to ASTM A536, Grade 65–45–12

Coatings

Rust inhibiting enamel paint
Color: Copper

For other coating requirements contact your ASC Engineered Solutions™ Representative.

Bolts

SAE J429, Grade 5, Zinc Electroplated

Heavy Hex Nuts

ASTM A563, Grade A, Zinc Electroplated

Gaskets

Grade "EP" EPDM Flush Gap Gasket
(Copper Color Code)

Service Temperature Range: –40°F to +250°F
(–40°C to +121°C)

Recommended for water service, diluted acids, alkaline solutions, oil-free air and many chemical services.

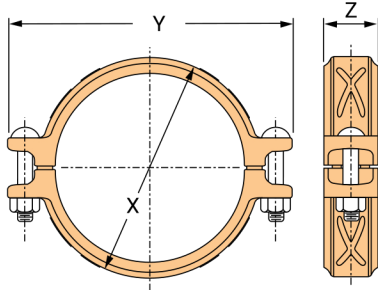
NOT FOR USE IN PETROLEUM APPLICATIONS.
NSF 61 Certified

Lubrication

- Standard
- Gruvlok Xtreme

PROJECT INFORMATION	APPROVAL STAMP
Project:	<input type="checkbox"/> Approved
Address:	<input type="checkbox"/> Approved as noted
Contractor:	<input type="checkbox"/> Not approved
Engineer:	Remarks:
Submittal Date:	
Notes 1:	
Notes 2:	

Rigid Coupling Fig. 6400



Nominal Size	Copper Tube Diameter	Max Wk. Pressure	Max End Load	Range of Pipe End Separation	Coupling Dimensions			Coupling Bolts		Approx. Wt. Ea.
					X	Y	Z	Qty.	Size	
In.	In./mm	PSI/bar	Lbs./kN	In./mm	In./mm	In./mm	In./mm	In./mm	Lbs./kg	
2	2.125 54.0	300 20.7	1063 4.73	0-0.08 0-2.0	3.00 76	5.00 127	1.68 43	2	3/8 x 2 1/4	1.53 0.69
2 1/2	2.625 66.7	300 20.7	1623 7.22	0-0.08 0-2.0	3.50 89	5.50 140	1.68 43	2	3/8 x 2 1/4	1.78 0.81
3	3.125 79.4	300 20.7	2300 10.23	0-0.08 0-2.0	4.18 106	6.28 159	1.68 43	2	1/2 x 3	2.76 1.25
4	4.125 104.8	300 20.7	4007 17.82	0-0.13 0-2.4	5.20 132	7.50 191	1.70 43	2	1/2 x 3	3.27 1.48
5	5.125 130.2	300 20.7	6186 27.51	0-0.13 0-2.4	6.20 157	9.10 231	1.80 46	2	5/8 x 3 1/4	4.71 2.14
6	6.125 155.6	300 20.7	8835 39.30	0-0.13 0-2.4	7.20 183	10.20 259	1.80 46	2	5/8 x 3 1/4	5.24 2.38
8	8.125 206.4	300 20.7	15547 69.15	0-0.13 0-2.4	9.32 237	12.40 315	2.00 51	2	5/8 x 3 1/4	7.67 3.48

Note:
Pressure ratings and end loads are based on use with ASTM B88 Type K or L tubing. For pressure ratings on Type M and DWV, contact your ASC Engineered Solutions™ Representative.
See Installation & Assembly directions on next page.

