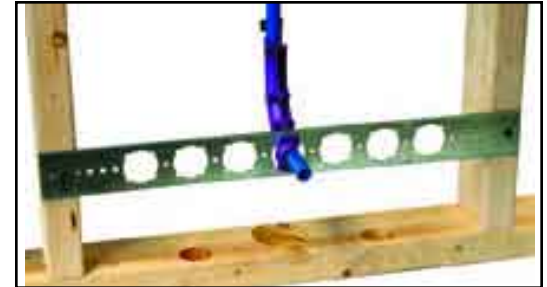


“For PEX Tubing Support”

#103-18, 103-26 PEXRITE® Galvanized steel bracket with 1-3/8” keyed holes on 2” centers. Positions 1/2”, 3/4” or 1” Copper or CPVC tubing and 3/8” or 1/2” PEX. This versatile bracket should be used with HOLDRITE® inserts.

MODEL #	BRACKET SIZE	FOR PIPE SIZE(S)	BOX QTY.	UPC CODE
103-18	20”	1/2”, 3/4”, 1” CTS	50	6 71119 10318 2
103-26	26”	1/2”, 3/4”, 1” CTS	50	6 71119 10326 7



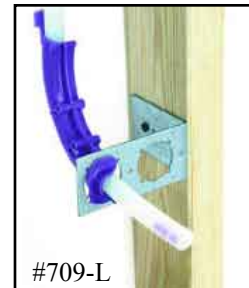
#704 PEXRITE® PEXRITE® turn-out. This bend support works with our HOLDRITE® #103 and #709 series brackets or can be attached directly to framing. Supports either 3/8” or 1/2” PEX tubing.

MODEL #	BRACKET SIZE	FOR PIPE SIZE(S)	BOX QTY.	UPC CODE
704	3-1/4” X 5-1/2”	3/8”-1/2” CTS	100	6 71119 10704 3



#709, 709-L PEXRITE® Galvanized steel brackets with 1-3/8” keyed holes providing a 2” and 4” center line off of the stud or plate. Designed to work with our PEXRITE® #704 insert. Ideal for lavatories, toilets and hose bibbs. Compatible with the HOLDRITE® #100 and #400 series inserts.

MODEL #	BRACKET SIZE	FOR PIPE SIZE(S)	BOX QTY.	UPC CODE
709	7-1/4” X 2”	3/8”-1” CTS	50	6 71119 10709 8
709-L	4-1/4” X 3-1/4” X 2”	3/8”-1” CTS	50	6 71119 11709 7



#721 PEXRITE® This bracket integrates directly with the PEXRITE® #704 and STOUT BRACKET™. It provides a PEX pipe support solution for lavatory and toilet applications. The #721 also attaches directly to wood, metal or concrete and various HOLDRITE® #100 and #400 series inserts can be used.

MODEL #	BRACKET SIZE	FOR PIPE SIZE(S)	BOX QTY.	UPC CODE
721	2-3/4” X 3-3/8”	3/8”-1” CTS	50	6 71119 10721 0



#101-18-R, 109-N-6 HOLDRITE®
#SB1S STOUT BRACKET™, 201 PRO CLAMP™
Various copper bullet mounting methods for PEX transition. For sinks, toilets, etc.



MODEL #	BRACKET SIZE	FOR PIPE SIZE(S)	BOX QTY.	UPC CODE
101-18-R	20”	1/2” CTS	25	6 71119 10119 5
109-N-6	6-1/2”	1/2”, 3/4” CTS	50	6 71119 10169 0
SB1S	10”-18”	Various	50	6 71119 10013 6
201	2-1/8” X 1-7/8”	1/2” CTS	50	6 71119 10201 7

