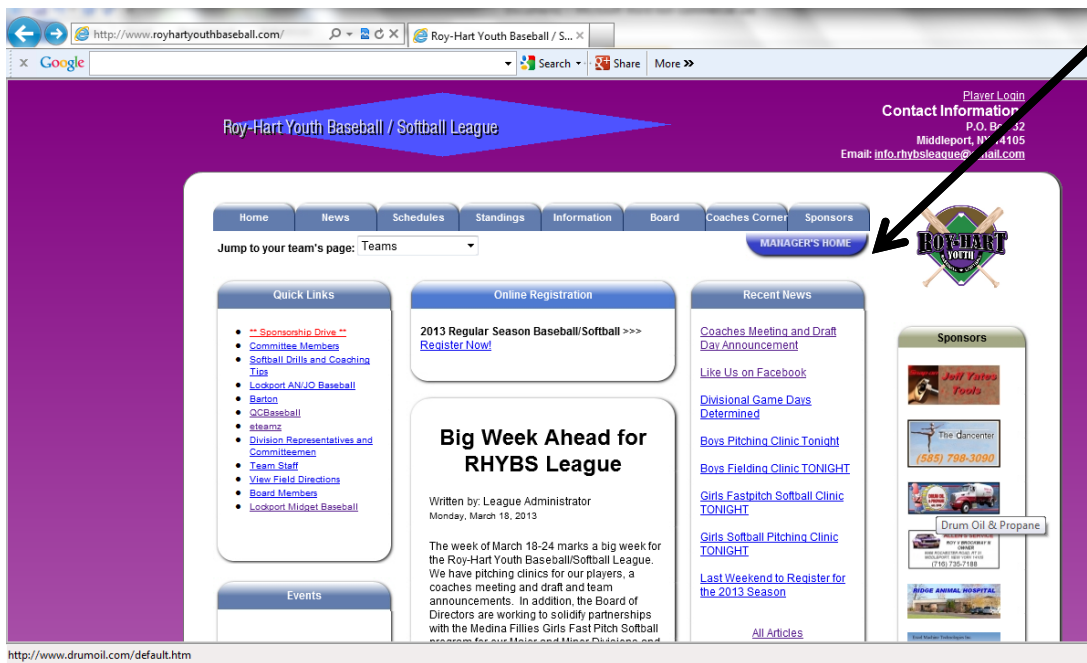


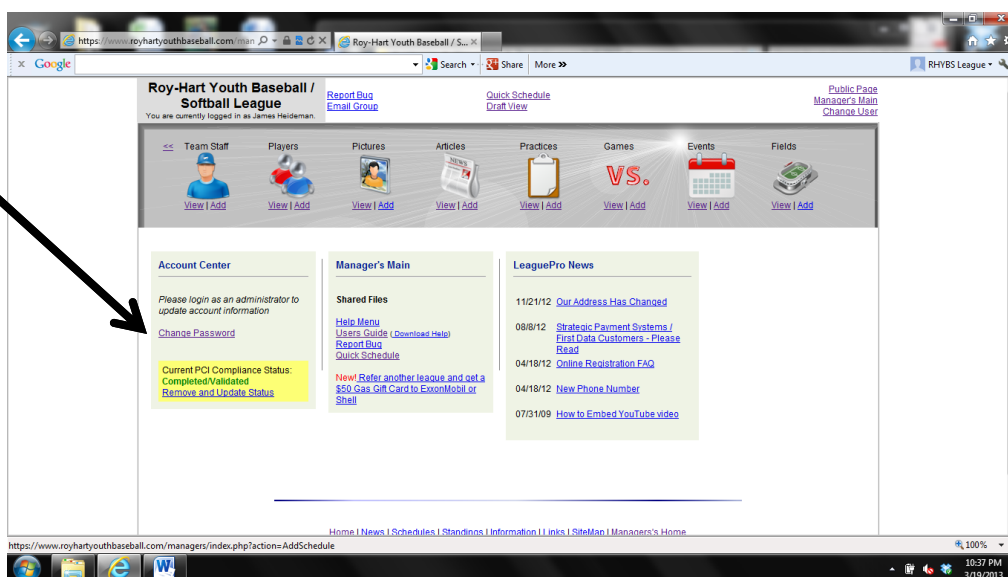


Coaches Website Access Instructions

1. Go to www.royhartyouthbaseball.com
2. Click on Manager's Home



3. Log in with your user name and temporary password supplied by the RHYBS League.
4. Once you are logged in to the Manager's Main page, you will need to change your password. Under Account Center, click Change Password.



5. Change your password and click Submit. To have your password reset after changing it, please email info.rhybsleague@gmail.com

Roy-Hart Youth Baseball / Softball League
You are currently logged in as James Heideman.

[Report Bug](#) [Email Group](#) [Quick Schedule](#) [Draft View](#) [Public Page](#) [Manager's Main](#) [Change User](#)

[Team Staff](#) [Players](#) [Pictures](#) [Articles](#) [Practices](#) [Games](#) [Events](#) [Fields](#)

Change Password

Username: James Heideman

Please Note: Good passwords are at least 8 characters, a mix of letters and numbers, a mix of upper and lower cases, and "do not" contain dictionary words. Remember, a password such as 'playball' or '12345' can "easily" be cracked.

New Password:

Confirm New Password:

☐ The password I have created is not one I use for high security websites such as Online Banking and Investment Accounts.

☐ If in the past, I used my high security passwords on this site, I have since updated the passwords on the other sites to something new.

6. Scheduling a Practice: Click on the Practice Add button, then select the date of the practice, team, field, start and end time. Click ADD to add your practice to the main schedule and to your team page schedule.

Roy-Hart Youth Baseball / Softball League
You are currently logged in as James Heideman.

[Report Bug](#) [Email Group](#) [Quick Schedule](#) [Draft View](#) [Public Page](#) [Manager's Main](#) [Change User](#)

[Team Staff](#) [Players](#) [Pictures](#) [Articles](#) [Practices](#) [Games](#) [Events](#) [Fields](#)

Add Practices

[Add Recurring Practices](#)

Practice Date: Mar 25 2013

Schedule practices for: Athletics

Field: Gasport Elem Gym

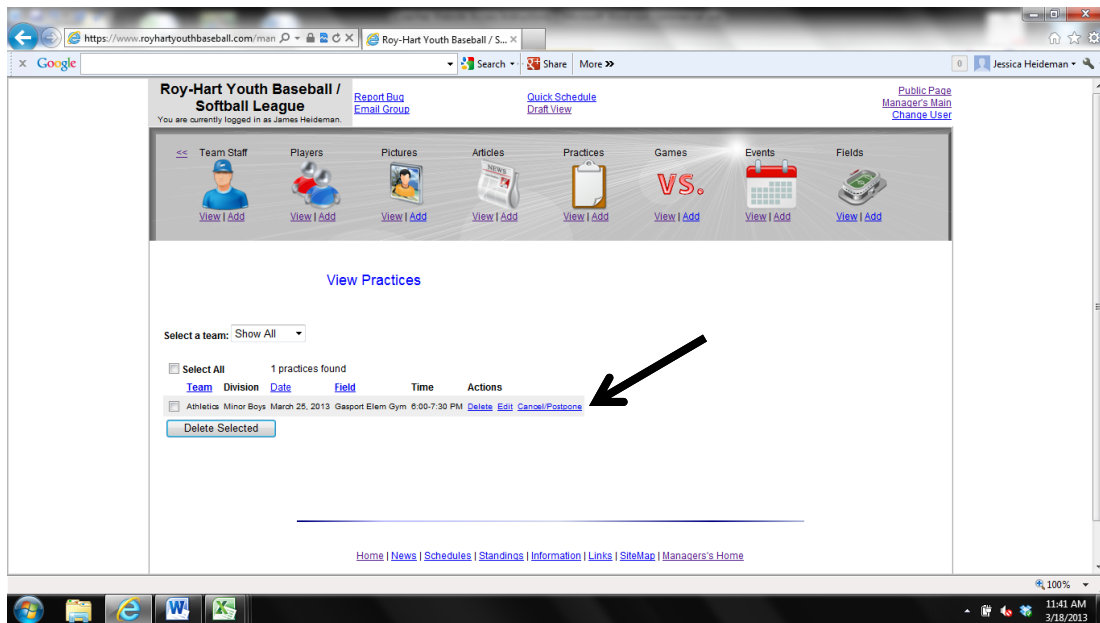
Start time: 6:00 PM

End Time: 7:30 PM

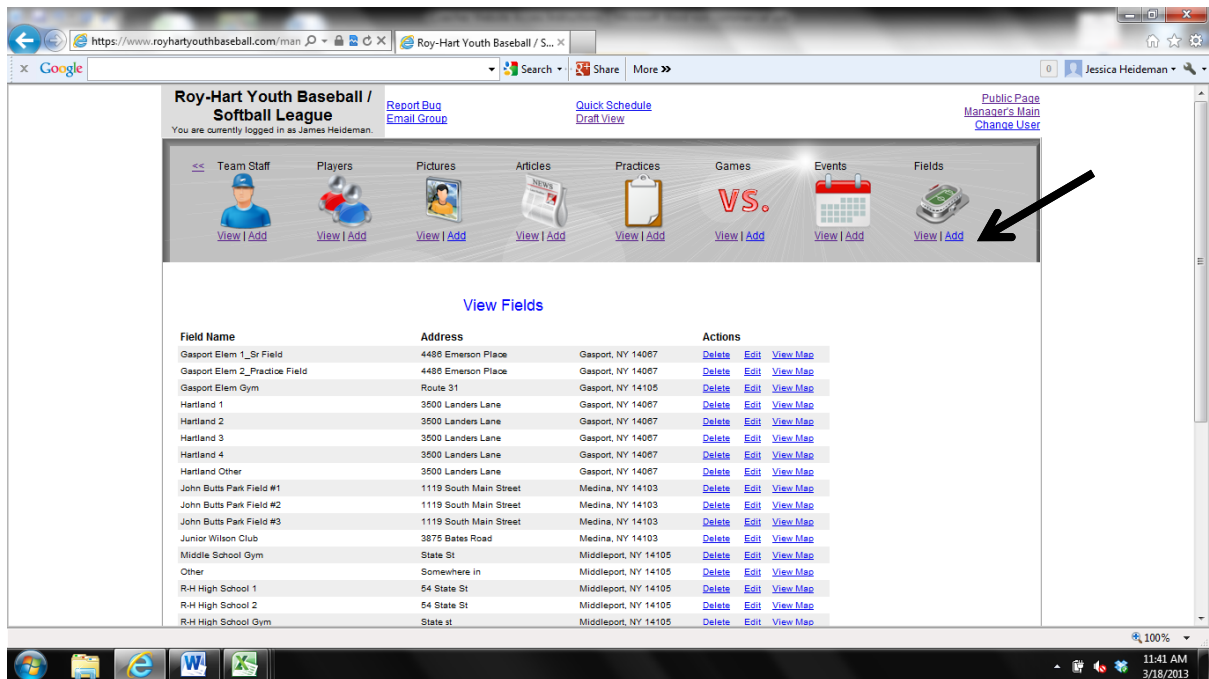
Tips:
• Practices appear on a team's page, accessed by selecting team from the list in dropdown labeled 'Jump to your team's page'.

[Home](#) [News](#) [Schedules](#) [Standings](#) [Information](#) [Links](#) [SiteMap](#) [Manager's Home](#)

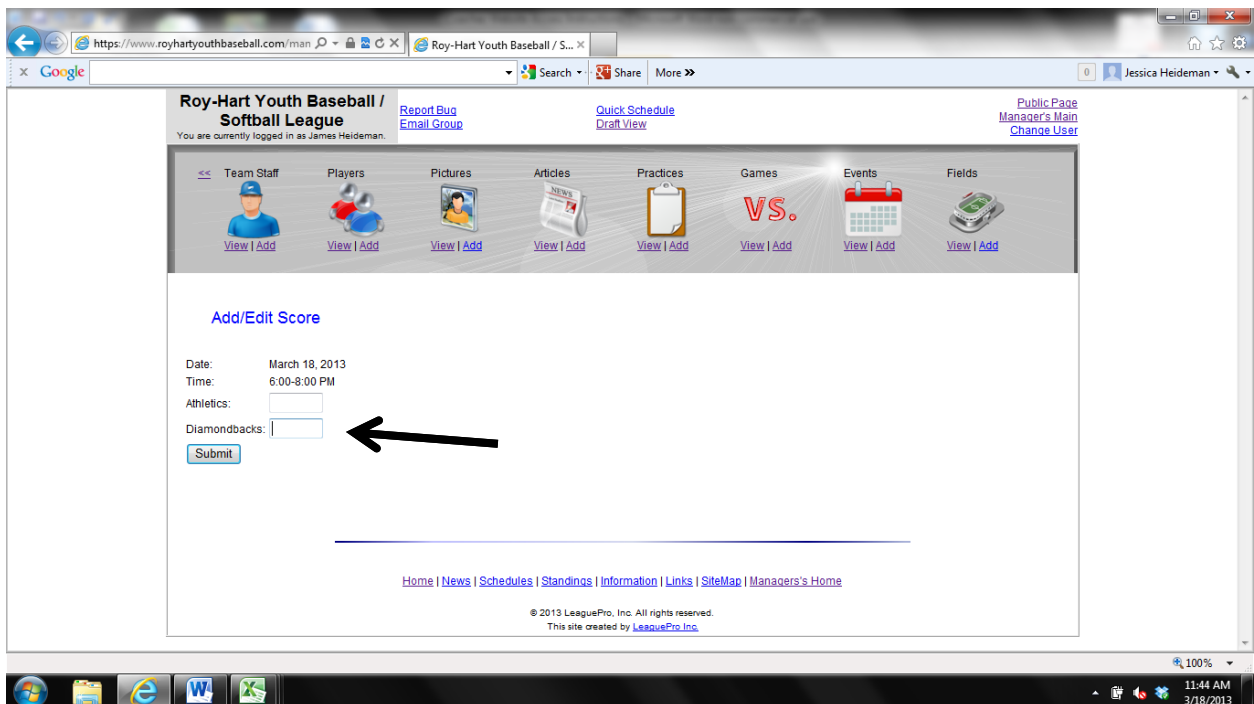
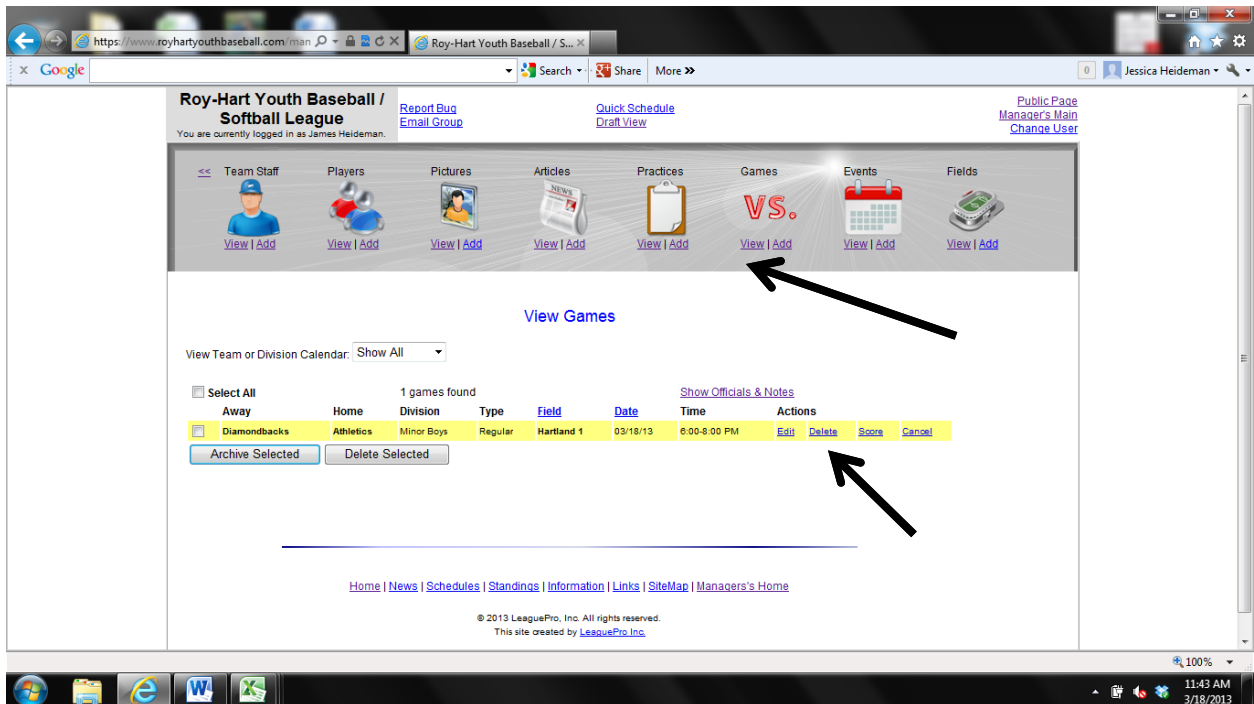
7. You may view, delete, edit or cancel/postpone your practice by clicking View under the practice icon. Changes will be reflected on the main schedule and on your team webpage schedule.



8. To view the available fields for practice, click View under the Fields icon.



9. Winning teams will need to update the score on the webpage following each game. To enter the score of any particular game, click View under the Games icon. Find the correct game and click Score under the bold Actions button. Enter the score and click Submit.



10. Coaches may also view/add team staff, view team players, add pictures to their team page.
11. We encourage all coaches to take a few moments to familiarize yourself with the Manager's Main portion of our website.