



# What is a capital fund campaign?

- Major financial campaign of 10 to 13 weeks (depending on the size of the church)
- Funds are raised over and above regular giving for 156 weeks

**Not Equal Giving, But Equal Sacrifice**

## Why have a capital fund campaign?

- Reduce the amount of borrowing needed
- Provide funds for debt service
- Increase borrowing capacity

## Why use a consultant-led program when we can do our own?

- Raise more – 25 to 40% more
- Keep pastor from becoming fund raiser
- Outside professional consultant has background, training and skills to give proper leadership

**You can do your own plumbing, root canals, appendectomy, etc., but would you?**

# Why use United We Build?

- **Cost** ... much less because we are part of the Texas Baptists family
- Strong **spiritual emphasis**...“Spiritual Preparation Weekend”
- Based on **Biblical models**...theologically consistent
- Seeks a **spiritual commitment**
- **Discover and develop** new sources of giving and leadership

# How much can we raise?

It depends upon...

- The **excitement** of the people for the project
- The **thoroughness** of the campaign
- The **giving capability** of the people
- The **type** of project
- The **follow-up** effort

# So, how much can we raise?

## Guidelines...

- New Sanctuary – **2 to 3X annual income**
- Education/Family Life Facility – **1.5 to 2X annual income**
- Remodel – **1 to 1.5X annual income**
- Debt Retirement – **1X annual income**

You can raise as **much money** with **United We Build** as with **any** other capital fund-raising program



# How does United We Build work?

## Preparation Period

## Intensive Period

## Harvest Period

# How does United We Build work?

## Preparation Period

Church Approval  
Pastor Training  
Leadership Team  
Training

**Spiritual  
Preparation  
Weekend**

## Intensive Period

## Harvest Period

# How does United We Build work?

## Preparation Period

Church Approval  
Pastor Training  
Leadership Team  
Training

**Spiritual  
Preparation  
Weekend**

## Intensive Period

Pastor's Sermons  
Prayer Visits  
Prayer Vigil  
Training Sessions  
Brochure  
Campaign  
Newsletters  
Banquet Invitation  
Phone Calls  
Testimonies  
Bible Study Lesson  
Advance Harvest

## Harvest Period

**Banquet**

## Preparation Period

Church Approval  
Pastor Training  
Leadership Team  
Training

**Spiritual  
Preparation  
Weekend**

## Intensive Period

Pastor's Sermons  
Prayer Visits  
Prayer Vigil  
Training Sessions  
Brochure  
Campaign  
Newsletters  
Banquet Invitation  
Phone Calls  
Testimonies  
Bible Study Lesson  
Advance Harvest

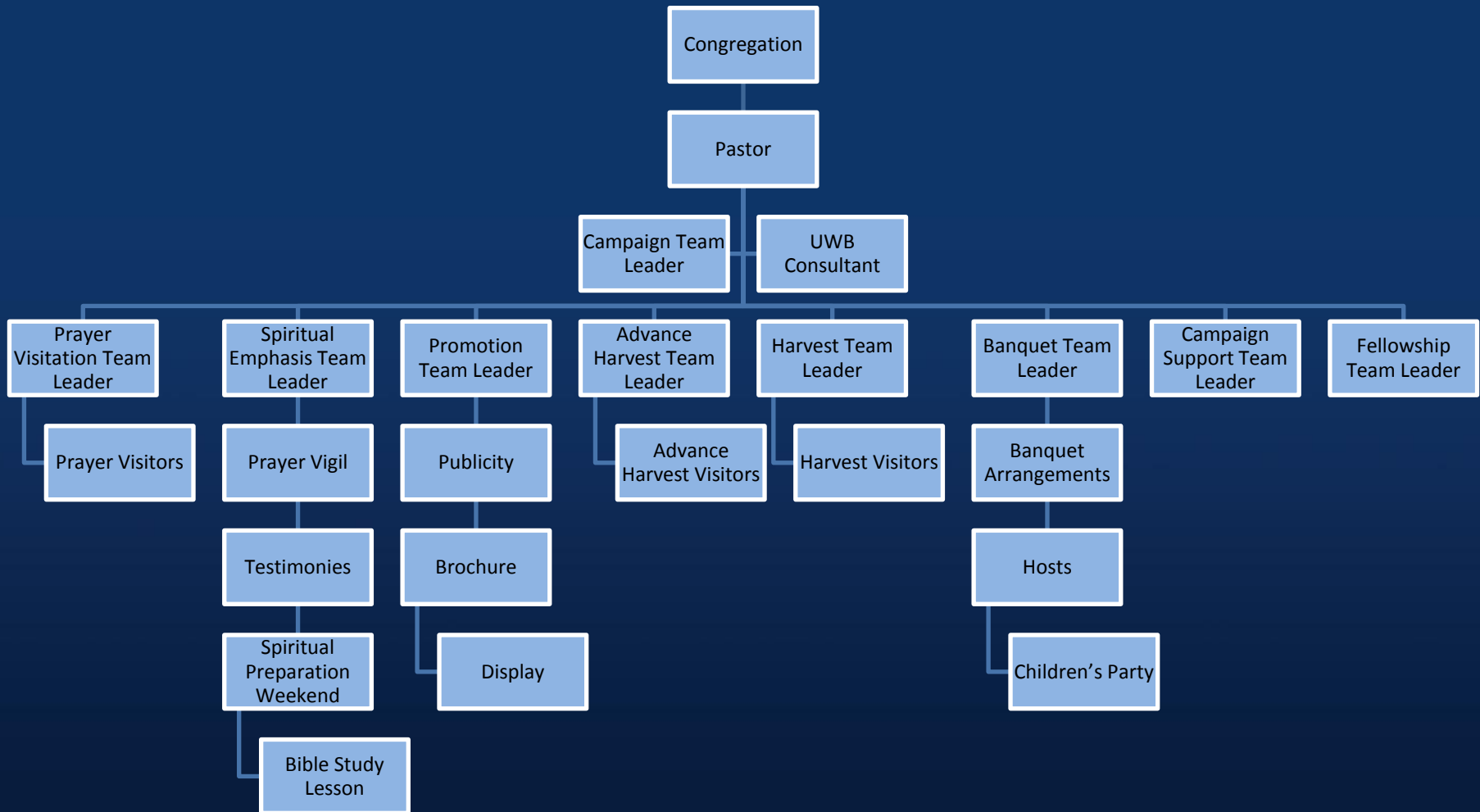
## Harvest Period

Faith Promise  
Victory Sunday  
Big Offering Sunday  
Follow-up Training  
156-Week Follow-Up

**Banquet**

	SUNDAY	MONDAY	TUESDAY	WEDNESDAY	THURSDAY	FRIDAY	SATURDAY
<b>WEEK I</b>	sermon #1 leadership meeting #1	send campaign brochure to printer					* Spiritual Preparation Weekend
<b>WEEK II</b>	* Spiritual Preparation Weekend leadership meeting #2 train prayer visitors	PRAYER VISITS IN HOMES					
<b>WEEK III</b>	testimony by PASTOR	PRAYER VISITS IN HOMES					
<b>WEEK IV</b>	leadership meeting #3	mail campaign newsletter #1		mail campaign brochure	*train advance harvest visitors, banquet hosts & harvest visitor captains		prayer vigil
<b>WEEK V</b>	sermon #2 testimony by CAMPAIGN TEAM LEADER leadership meeting #4	mail campaign newsletter #2	mail building banquet invitation				
<b>WEEK VI</b>	testimonies leadership meeting #5	mail campaign newsletter #3	ADVANCE HARVEST CULTIVATION				
<b>WEEK VII</b>	sermon #3 testimonies leadership meeting #6	mail campaign newsletter #4		Bible Study lesson preparation	*train harvest visitors		
<b>WEEK VIII</b>	Bible Study lesson testimonies <b>BUILDING BANQUET</b> children's party	assignment meeting for harvest visitors	HARVEST VISITATION IN HOMES				
<b>WEEK IX</b>	testimonies	COMPLETE HARVEST VISITS					
<b>WEEK X</b>	<b>VICTORY SUNDAY &amp; BIG OFFERING DAY</b>						
<b>WEEK XI</b>			* Follow-up Team meeting				
		FOLLOW-UP BEGINS					

# Leadership Team Organization Chart



## Estimated Cost of Program

Church resident families

Average Bible study attendance

Total receipts \$

### Cost of United We Build

Brochure \$

Banquet \$

Promotion, meals, etc. \$

BGCT Program cost \$

**Total cost: \$**

## Advantages for a United We Build Campaign

- Regular budget **giving is elevated**
- **New leadership** is discovered
- Campaign **tailored** to your church
- Thorough **training** and detailed materials
- A program **by Baptists for Baptist** churches
- **Low cost** (because we are a part of the Texas Baptists family)
- Strong **spiritual emphasis**



