

MOBILE LIDAR MAPPING

Tectonic

PRACTICAL SOLUTIONS. EXCEPTIONAL SERVICE.

Tectonic's Survey Department is proud to announce the incorporation of **Mobile LiDAR** into their growing list of services and capabilities. This Mobile LiDAR (Light Detection and Ranging) scanner uses **GPS** and **GNSS** in conjunction with a high-grade **IMU** to provide **high accuracy digital mapping** of large infrastructure projects. The **Leica Pegasus II Ultimate** uses up to two GPS/GNSS antennas to track position and direction, a tactical grade IMU, and a Z+F profiler to measure up to **1 million points per second**. In addition to the point data gathered by the system, it also features 5 fixed cameras and a 360° Spherical Camera that takes a **full 360 panoramic array** of digital photos that can be superimposed on the **point cloud**.

APPLICABLE AREAS:

Highways/Streets

Utility Route Surveys

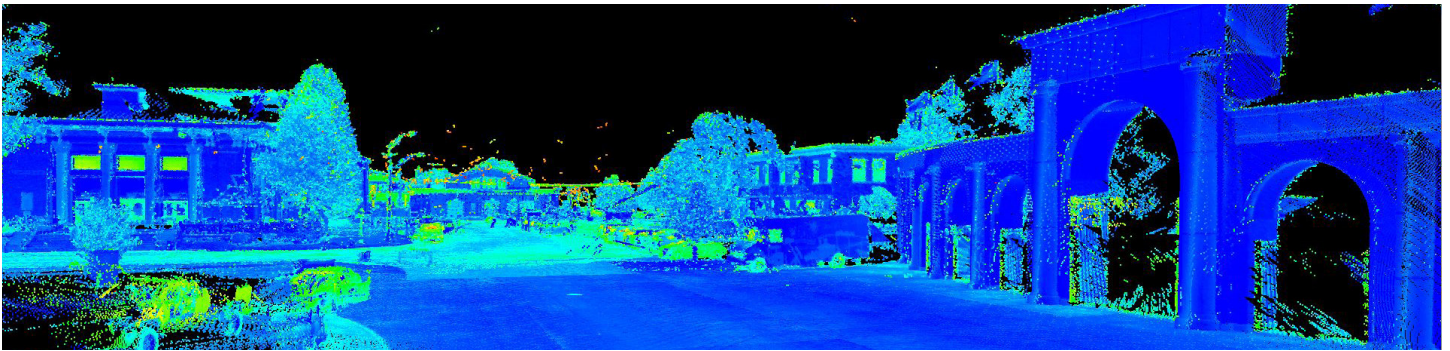
Railways

Transmission Lines

Airports

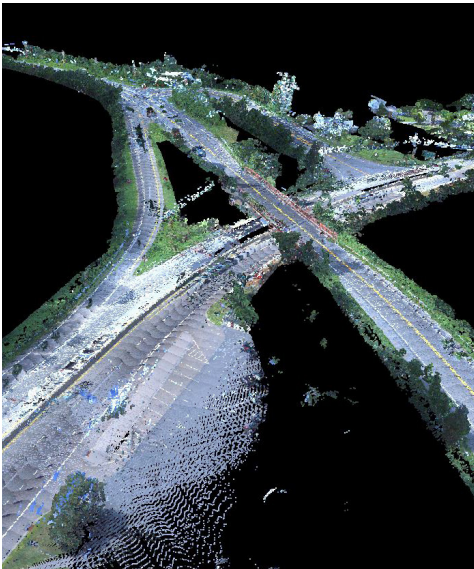
GIS Applications

Infrastructure Inventories



Above: Survey of Utility/Light Pole Locations Utilizing Mobile Mapping at the New York State Fairgrounds; Syracuse, NY

Below: Mobile Mapping of Route 17 for Orange & Rockland Utilities Gas Line Replacement; Sloatsburg, NY



BENEFITS:

- More Accurate Than Other Remote Sensing Methods
- Produces Survey/Engineering Quality Data
- Rapid Data Collection/Reduce Acquisition Time
- Increased Safety by Limiting Field Staff Exposure
- Digital "Street View" Photo Mosaic
- High Level of Detail
- Minimizes Traffic Disruption
- Significant Cost Savings over Conventional Surveying

For more information or to schedule a survey, please contact:

Theodore Haines, PLS

Vice President / Manager of Survey

(800) 829-6531

tjhaines@tectonicengineering.com

www.tectonicengineering.com