



**FilmMaker | 10**

## INDUSTRY-LEADING INKJET SCREEN PRINT FILM SEPARATION SOFTWARE

The world's most widely used inkjet film separation RIP software. Filmmaker provides precisely screened, density-rich films printed on most inkjet printers using a wide variety of ink and film combinations.



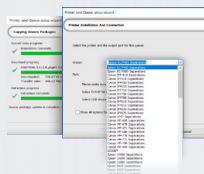
**CADlink**  
TECHNOLOGY CORPORATION  
Making your machines run better.

# PRECISION SCREENING, OPTIMUM DENSITY, SUPERIOR FILM OUTPUT



DOWNLOAD A FREE  
FULLY FUNCTIONAL  
TRIAL VERSION AT  
[CADLINK.COM](http://CADLINK.COM)

## UNMATCHED USABILITY AND FLEXIBILITY



### GET UP & RUNNING INSTANTLY WITH THE SETUP WIZARD

Designed for first time users, the printer/queue setup wizard enables quick and easy printer, ink and media setup using a simple step by step procedure.

### VIRTUALLY LIMITLESS WORKFLOW SUPPORT

Print directly  
from your favorite  
design application



Seamless .pdf import  
(along with most other  
widely used file formats)



Drag and drop  
files directly into  
selected queues



Automated  
hot folder  
support

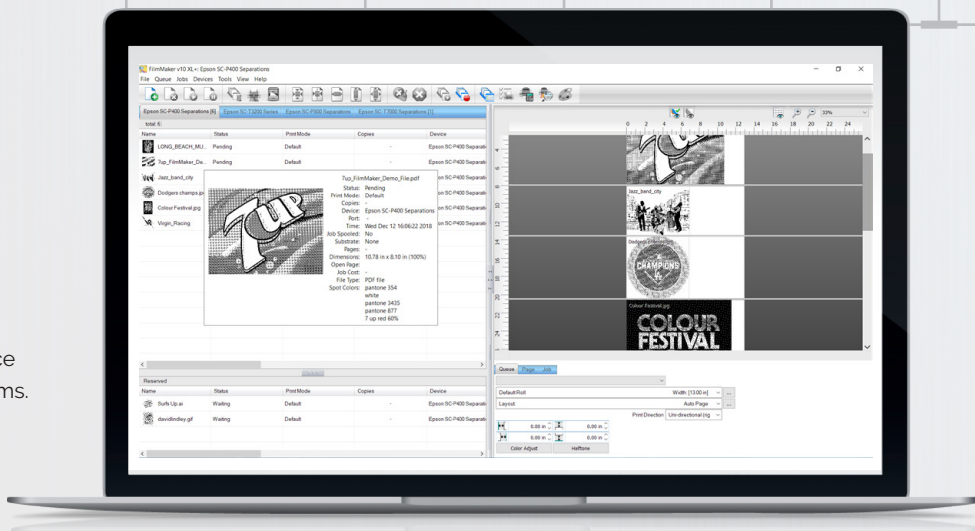


Network  
printing  
functionality



### VISUAL PRODUCTION MANAGER™.

Simultaneous, multiple printer,  
multiple queue job management  
support. Manage all production  
aspects in a single, intuitive  
production management console.  
VPM includes all required job  
preparation, scheduling and print  
setting options required to produce  
professional ink jet screen print films.



### MULTIPLE CHANNEL BLACK INK SUPPORT

FilmMaker supports  
a variety of black ink  
configurations. Use the  
factory default printer  
manufacturer ink and  
black ink channel(s) or  
utilize any ink channel in  
your printer with third-party  
black inks.

### THE LARGEST SELECTION OF SUPPORTED PRINTERS

Specially designed custom printer drivers supporting more  
printer manufacturers and models than any other ink jet  
screen print film RIP software. From desktop to wide format  
printers by Epson™, Canon™, Ricoh™, Mutoh™, Roland™  
and many more. FilmMaker also includes a "direct to driver"  
printing option which enables separations to be sent directly  
to any Windows-based printer driver already installed on the  
workstation thereby extending support to all printers used  
on Windows™ operating systems.





## OPTIMIZED PRINT PERFORMANCE



### PERFECT DENSITY EVERY TIME USING THE INK DENSITY TEST PAGE WIZARD

Achieve optimum density levels with a single test print regardless of which ink/film combination is being used.



### HIGHEST QUALITY PRECISION SCREENING

FilmMaker includes CADlink's unique screening algorithms that provide exceptional quality within finely detailed, mid-tone, gradient, shadow as well as highlight areas. Utilizing true variable dot printing support (multiple sized dots within the same cell), FilmMaker provides unmatched screened output.

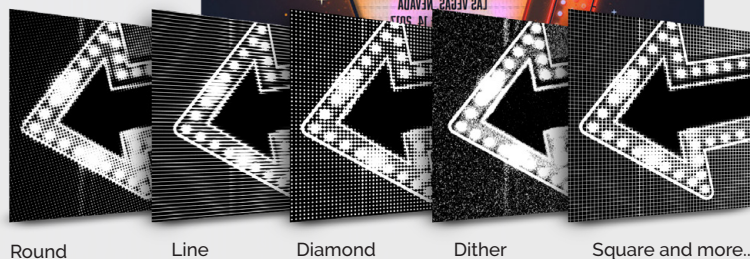
### ELIMINATE MOIRE PATTERNS AND ACHIEVE THE HIGHEST POSSIBLE LPI LEVELS WITH JITTER™

When applied alongside FilmMaker's default screening methods, Jitter™ provides a simple and flexible way in which to modify halftone screens in order to print screens in excess of 150 LPI using only inkjet printer technology.



### COMPLETE HALFTONE CONTROLS

Apply halftones directly to jobs using frequency, angle and shape settings or enable the "application halftoning" option to utilize halftones already applied to files within third-party applications.



### IN-RIP SEPARATIONS

FilmMaker will automatically detect incoming jobs that have been processed as separations in 3rd party software applications. Alternatively, for files that have not been previously separated, InRIP separations will identify all process as well as spot color planes within the file and automatically create separations.



# FILMMAKER VERSION 10 FEATURES\*

## LEADING EDGE TECHNOLOGY SUPPORT AND CONNECTIVITY

- Windows® 10, 8, 7 support
- Largest number of printer manufacturers and models supported by custom direct printer drivers (Epson®, Canon™, Roland®, Mimaki® and more)
- Direct to driver printing option (using GDI interface) enables printing halftones to any windows-based printer
- Quick and easy initial set-up using printer/queue set-up wizard
- Ink density wizard provides optimal ink volumes for variety of film options as well as third party inks
- Lightning fast file throughput using 64 and 32 bit processing
- Seamless.pdf file workflow
- Virtually unlimited additional file support; png/svg/bmp/gif/jpg/tif/psd/eps/ai
- "Send to" plug-ins for Corel and Adobe products
- Drag and drop file support
- International language support (Unicode)
- Network printing with automated TCP/IP port search for simplified network printer setup

## OPTIMIZED PRODUCTION WORKFLOW

- Print to multiple printers using multiple queues simultaneously
- Hot folder support for automated sorting and printing of jobs
- Multiple black ink channel support
- Create multiple queues based on output type and requirements
- Visual, interactive job display and layout
- Print Preview in RIP to avoid potential production errors
- Page overlay view mode
- Job scheduling and prioritization (automatic pre-sets or manual)
- Advanced registration mark set-up with "Production Markup" tools
- Automated or manual nesting of jobs
- Barcode support for automated production
- Instant access to job information using "mouse over image"
- RIP threading- faster multiple job processing
- Job costing
- Template support. Set up queues with repeatable, exact positioning of graphics

- In-RIP separations automatically detect spot or process colors
- Automatic detection of pre-separated files
- Print customer proofs with color print option
- Multi-copy with spacing controls
- Job rotation
- Scale image
- Mirror/invert image
- Cropping tools

## AUTOMATED/MANUAL ADVANCED USER PRINT PRODUCTION CONTROLS PROVIDE UNMATCHED OUTPUT QUALITY

- Advanced ink density controls
- Precision halftone controls eliminate moire patterns
- Complete control of dot shape, screen angle, frequency
- True variable dot support (multiple size dots per cell) leverages advanced variable dot technology available in certain printers
- Unique, industry-leading AM/FM screening algorithm, Jitter™
- View raw data
- Soft proofing
- Film negative support

\*Two packages available. FilmMaker DTP+ and XL+ include the same great features. The only difference is that XL+ includes wider format printer support.

## CADLINK FAMILY OF SOFTWARE PRODUCTS

Discover the benefits of using a single source software provider for all your design and production requirements.



[www.cadlink.com](http://www.cadlink.com)

FilmMaker is a registered trademark of CADlink Technology Corporation.

All other trademarks are a property of their respective owners.

### SUPPORTED PRINTERS:

FilmMaker supports all widely used desktop, tabloid and wide format inkjet printers used to create screen print film. New custom printer drivers that optimize printer performance are created regularly.



For a list of all supported printers Visit the [FilmMaker product page](#)

### COMPATIBLE WITH:

Windows 10

Windows 8

Windows 7

### SYSTEM REQUIREMENTS:

CPU	Intel i5-i7 2.6-3.0GHz
DISK	500 GB SSD (recommended) or HDD
RAM	8-12GB RAM