

100% Granular Clay Absorbent

Oil Absorbent™



Automotive



Industrial



Janitorial



Farm/Ranch



Oil and Gas

- ◆ **Made from Montmorillonite Clay, a naturally occurring mineral, with superior absorptive ability**
- ◆ **Liquids adhere to the surface pores allowing quick cleanup of water, oil, grease, water coolant, and much more**
- ◆ **Versatile for all non-aggressive fluid cleanup**
- ◆ **Suitable for home and work environment**
- ◆ **Smaller particles allow product to be more concentrated permitting quicker absorption**
- ◆ **100% Natural Mineral**
- ◆ **NSF Registered**

Ep Minerals®
A U.S. SILICA COMPANY

(800) 366-7607 • www.epminerals.com



**Gray Medium
Coarse Granulation**

OIL ABSORBENT™ is perfect for a variety of applications...

- 🔥 **Automotive Retailers, Dealers, Repair Garages, Body Shops**
- 🔥 **Hydraulic and chemical spills**
- 🔥 **Manufacturing facilities**

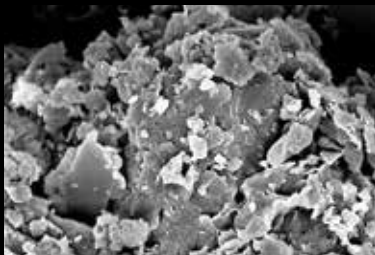
Part #	Weight	Bag Type	Pallet Configuration	Plant
8150	50 lb	Paper	Bags per Pallet: 40 Pallet Size: 40 x 48" Pallet Height: 48"	Middleton

For more information on Oil Absorbent or to request a free sample kit, please call your sales representative or contact us directly at (800) 366-7607 or visit www.epminerals.com.

What is Montmorillonite Clay?

There are many types of clay minerals from all over the world. EP's clay minerals, known as Montmorillonite clay, are part of the Smectite group of clays mined in the central region of the US identified as the mid-continent vein. Once mined, the clay is processed at high kiln temperatures allowing pore expansion and increased hardness. Due to high pore space and high surface area, clay absorbs liquid on the outer layer through external pores.

Microscopic View of Clay



Clay Prior to Mining & Processing



Ep Minerals®
A U.S. SILICA COMPANY

(800) 366-7607 • www.epminerals.com